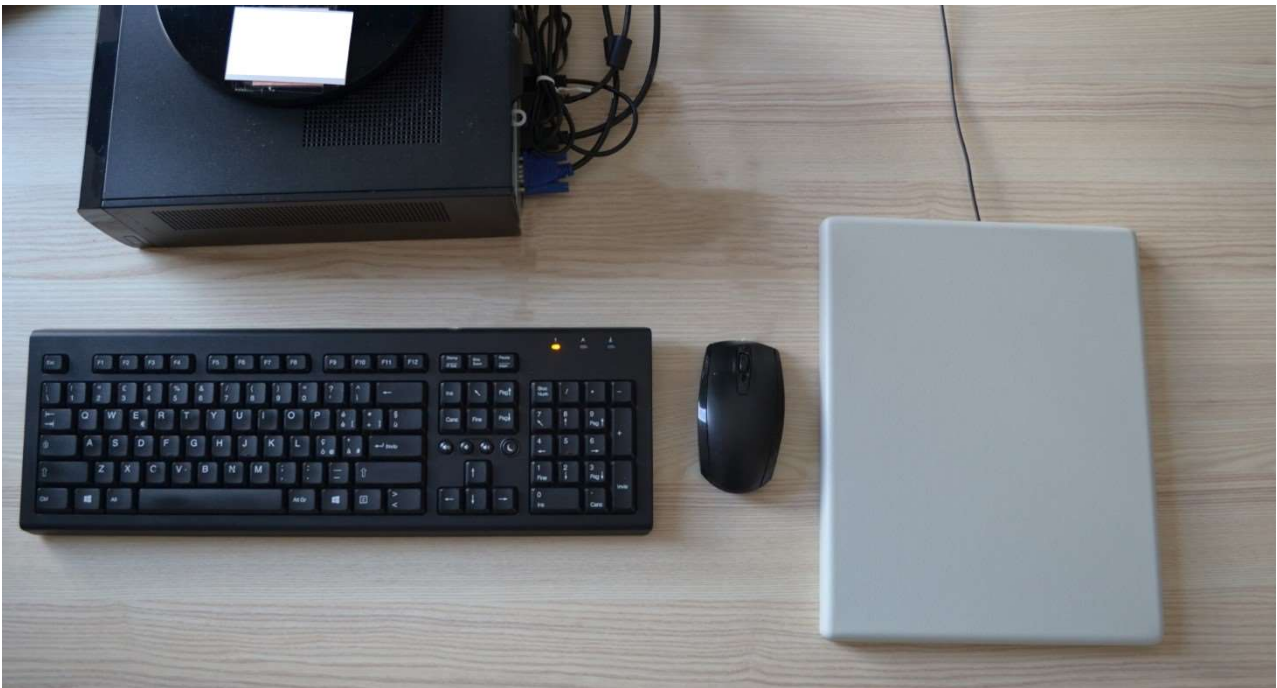


STAFF STATION



The shielded workstation provides staff with a quick and efficient solution to program and verify RFID tags. The library staff can also activate / deactivate the anti-theft of documents without the direct use of the management system in use.

The system can be used with multiple documents, of various types, positioned simultaneously on the antenna.

The shielding ensures the absence of false readings due to volumes positioned nearby and not directly above the antenna.

In addition, using our proprietary software, the workstation allows staff to perform operations such as returns and renewals directly at the loan counter, thanks to the direct connection with the management system.



Benefits of Workstation shielded

Screen reading area

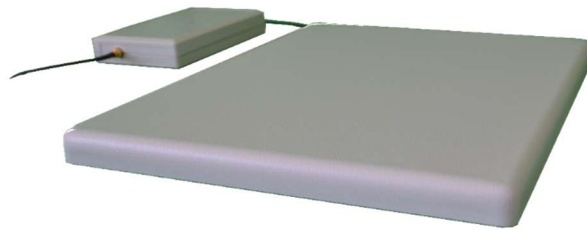
Thanks to the fully shielded antenna, which provides a focused detection field, only objects positioned above the station will be detected.

Compact design

With its small size, the shielded workstation allows you to work on desks with limited space.

Multiple readings

The workstation antenna can read multiple stacked documents of various sizes, weights and thicknesses.



Technical specifications:

Dimensions (w x d x h):	315 mm x 250 mm x 20 mm
Shielding:	Full shielded
Weight:	1,5 kg
Power supply:	RFID reader connected to the PC via USB; it is supplied with a localized plug-in power supply (110V ac / 60Hz or 240V ac / 50Hz). RF power 1.2 W; power cord included 110V ac / 60Hz
User cards supported:	Barcode and RFID cards
Customizations:	Ability to add a receipt printer and barcode reader to the workstation.