

FEATHERSTONE ROCK PRODUCTS – EDMONTON, ALBERTA

## So Real, So Light and So Easy

Lightweight, Non-combustible, Durable, Decorative Stone Finishes.



Flexible Designs,  
Custom Colors, Corporate Logos,  
LEED Friendly, Easy to Install, Interior & Exterior

RESIDENTIAL & COMMERCIAL

Local Manufacture, Professional Installations.

FeatherStone Rock Products,  
9245 – 35. Ave, Edmonton, AB T6E 5Y1  
(780) 231-4793

[www.FeatherStoneRockProducts.com](http://www.FeatherStoneRockProducts.com)

INDEX:

- I. Product Definition
- II. Residential Examples
- III. Commercial Samples
- IV. Stone Styles
- V. Addendum



Clean 15 in collaboration with Canadian Business Journal Magazine and its strategic partners Fogler, Rubinoff LLP, Yet2.com & OCETA, announce that ATI-Composites has captured the top prize in the 2010 Clean "15" Canadian clean technology competition.

## FeatherStone Decorative Cladding products

### Description:

FeatherStone Decorative Cladding is a lightweight, non-combustible, inorganic cellular “cement” product that features a finely textured, abrasion resistant surface, which can be made in a variety of colours, sizes, thickness, shapes and textures.

### Key Features & Benefits:

**Very light weight:** The final product will offer a final density of 0.65 to 1.25 g. /cc which make them easy to install using a variety of cementitious adhesives.

**Variable thickness:** The product is cast as a fast- setting; self-leveling, water-based slurry using vacuum-formed plastic molds which, once set and dried can range from 0.75 to 1.5 inches thick depending on desired final compressive strength.

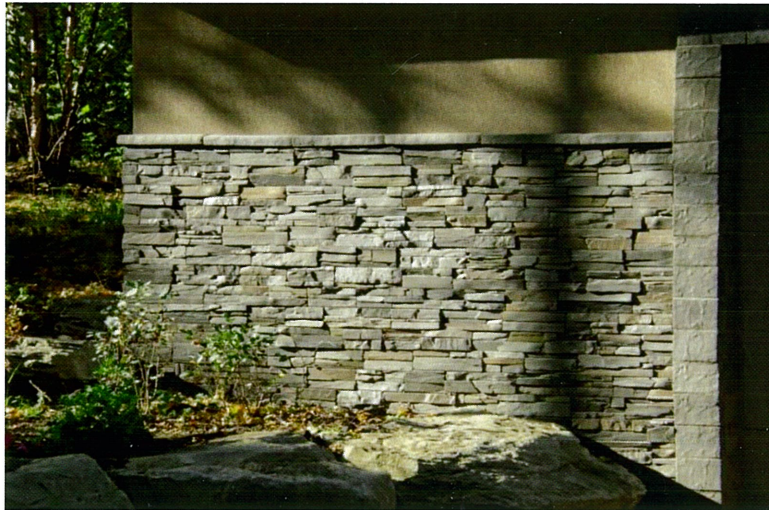
**Integral colour:** The colours (powdered stucco cement pigments) are incorporated into the wet slurry and are dispersed throughout the entire matrix – which means that the colours will not scuff off the surface and will not leave lighter scuff marks if the surface is scratched during its service life.

**Glass reinforced:** The individual ‘tiles’ stones, or slabs are fiber-reinforced with mesh and/or glass fiber to assist in adding flexural strength to the individual pieces.

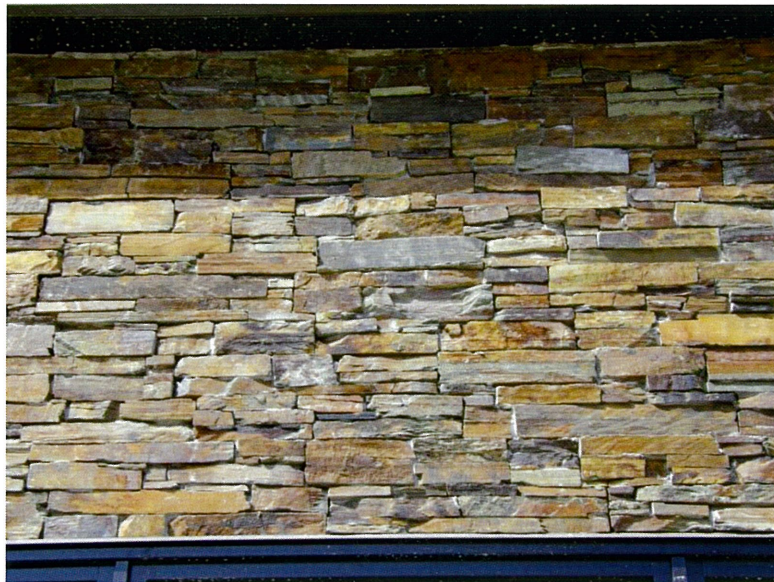
**Inorganic – non-combustible:** The lightweight cellular cement is completely devoid of any compounds that will burn or support combustion. It is ideally suited to replace other decorative, organic foamed plastic or EPS products in assembly occupancies, non-combustible commercial and similar Fire Code Regulated structures.

## A Side by Side Comparison: FeatherStone Versus Real Stone:

**FeatherStone:** Lightweight, easy to install, non-combustible, durable and very attractive, with clean crisp lines and accents. These are perfectly rectangular clusters of stone, made to look like individual stones, so they go up easily with a minimum of fuss and bother. Light weight, inorganic, yet durable. No grouting needed – very clean finish!



**Real Stone:**



**Some really tough slugging here!** Extremely irregular shapes; heavy to handle and difficult to install and hold in place until the mortar sets; sharp and jagged edges can lead to injury if one slipped and fell against the wall. **A very untidy finish!** Excess mortar will not wash off once the stone has set in place!

## FEATHERSTONE ROCK PRODUCTS:

### Residential Examples:

These attractive stone veneers can be made in wide variety of (custom) colors and styles to match your siding, stucco and other decorative features of your residence.



Since 2007, ATI-Composites has had an operating division that produces FeatherStone, a Light Weight, Decorative Stone Veneer that is made in Edmonton, using a unique combination of materials, including very high levels (volumes) of post-consumer glass spheres that contribute to their lighter weight, non-combustibility and ease of installation.

We provide both the products and the installation services, by experienced tradesmen.



**Seven Years Later:** The original update was done in the summer of 2008.



You can see that after 7 years, with a south west exposure, the FeatherStone still looks fresh and attractive.



## FEATHERSTONE ROCK PRODUCTS:

### Commercial Examples: Hampton Inn at Saskatoon, Saskatchewan

**FeatherStone and Pre-Cast Facing Stucco Panels:** This new hotel was open in the spring of 2015.



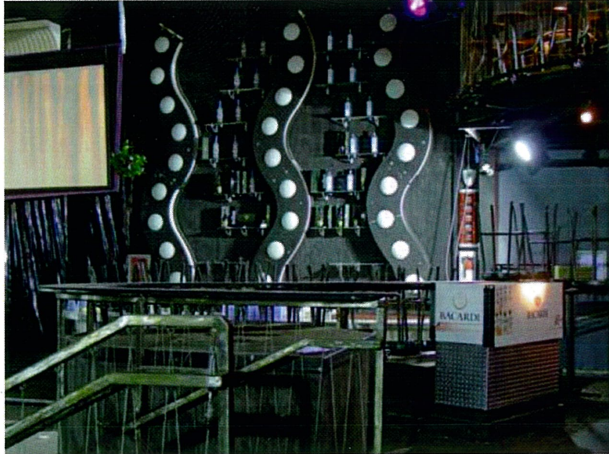




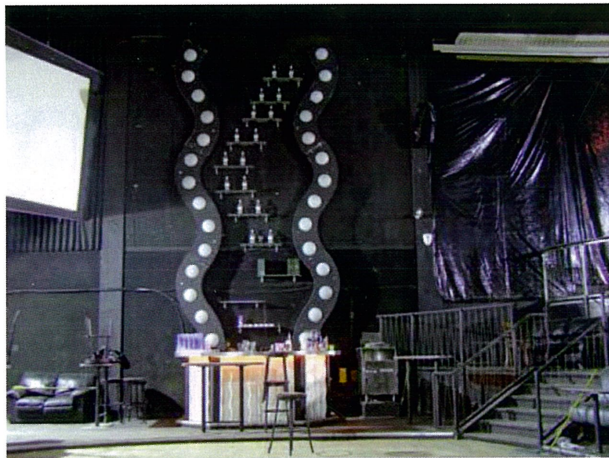
## WEST EDMONTON MALL Century Ball Room

During the summer of 2007, the principals of Feather Stone Rock Products were invited to participate in the interior renovation of the West Edmonton Mall nightclub known as Rum Jungle.

**BEFORE:** These early photos show the interior décor before the renovation project started.



The club consisted of a number of walk-up bars stationed around a central dance floor. Seating was arranged in tiers with all attention focused on the dance floor.



On special occasions incremental decorations were strewn about – as seen here with these polystyrene snowflakes.

## Renovation with FeatherStone Large Format Panels

The décor (and visual entertainment) consisted of all surfaces, furniture, walls and ceiling being painted flat black, with colored lasers dancing to the music in a dense vapor fog generated by a fog machine.

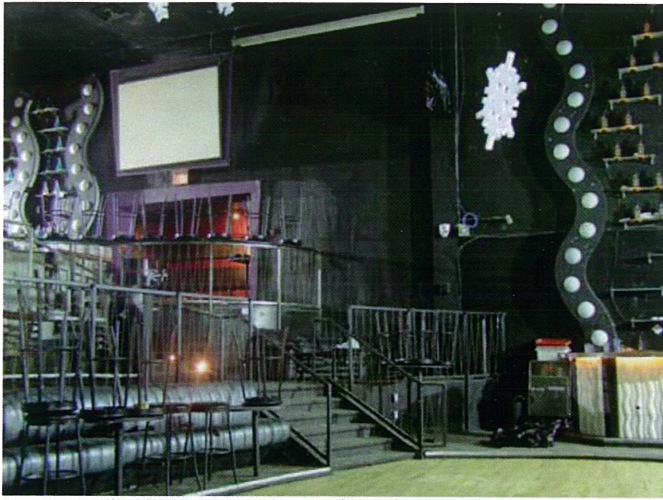
**AFTER:** the renovations, we see a bright new décor with an entirely new motif.



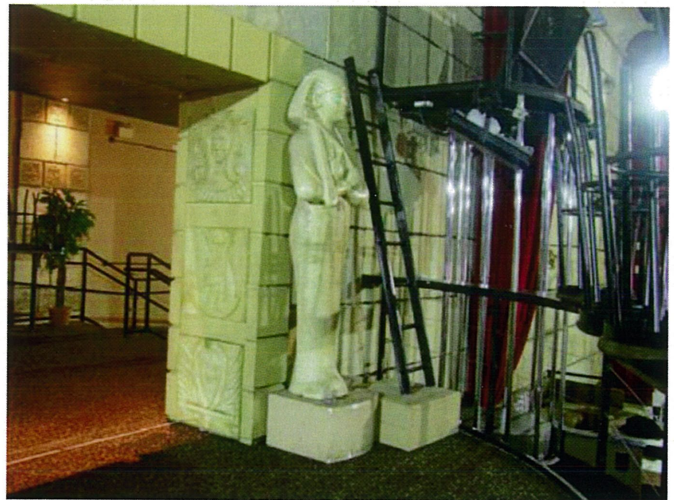
These large stone panels (2' X 4') were installed up to 20 feet above the floor and added a air of grandeur with a new Egyptian motif.



While this short photo sequence can't do the renovation justice, but the clean lines & touch of class does show through.



Interior daytime pictures at clean up time



Empire 7



Before: Interior night time at opening  
**END OF THE BEFORE PICTURES**



Empire 6

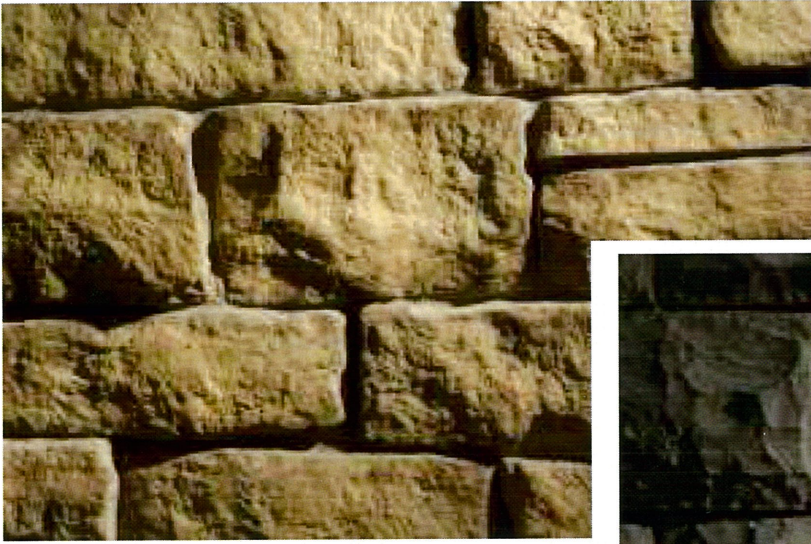


Empire 8

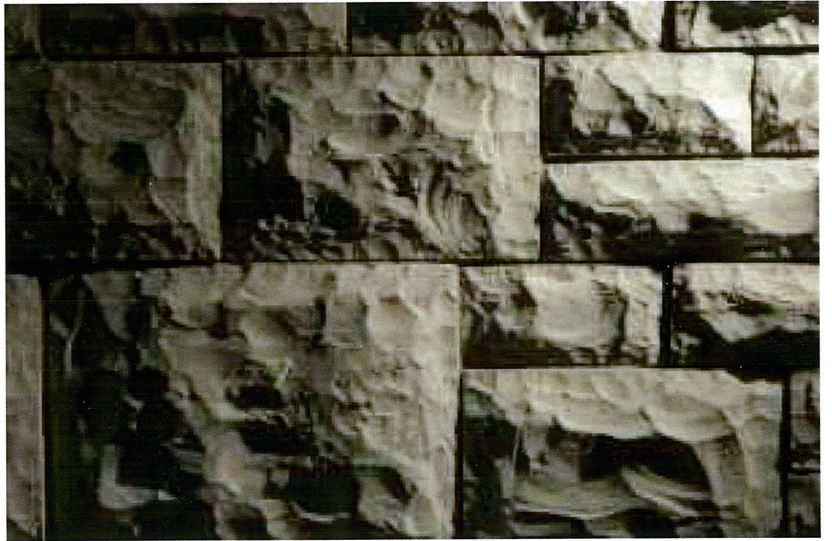


Empire 5 Panels and hieroglyphs all cast from molds.

**STONE STYLES**



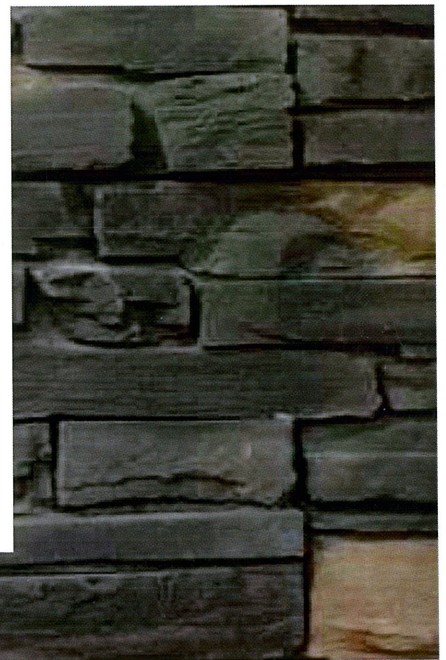
**Lime Stone**



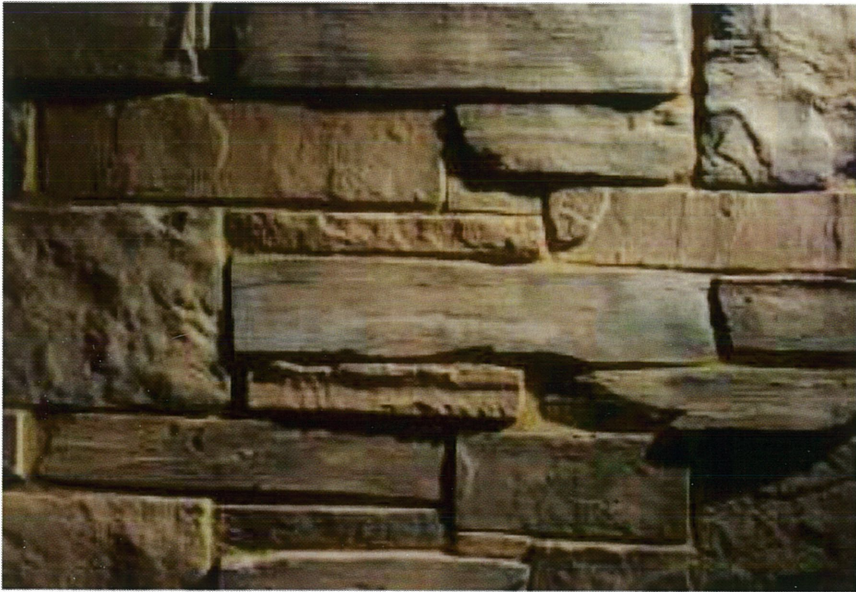
**Castle Stone**



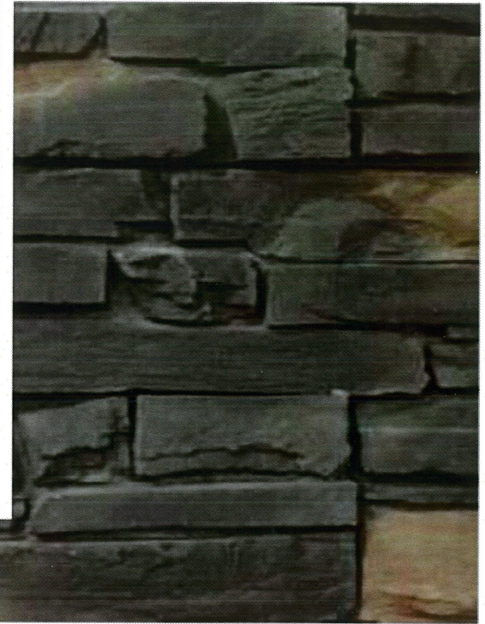
**Desert Stone**



**Country Ledge Quick Fit**



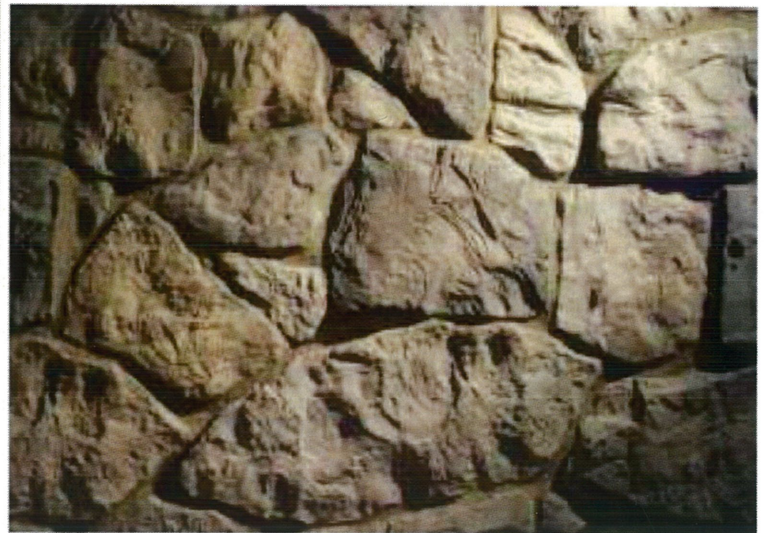
**Desert Stone**



**Country Ledge Quick Fit**



**European Castle Stone**



**Field Stone**

## Cost Effective:

### Advantages:

75% lighter than “Cultured Stone”

Large “tile-like” format – up to 2’ X 4’ fiber-reinforced panels  
Thin Profile – ¼ to ¾ inch thick (or greater where desired)

Easy to install – Lightweight = ease of handling

Less expensive than real stone or man-made Cultured Stone

Process can result in a ‘wood-look’ in board stock in lengths up to 4 feet

Comparative					
Style	Material	Weight/ SF	Installation time	Fire Resistant	Price
<b>Replstone</b>	Polyurethane	5 lb/sf	About 180	<b>N</b>	\$9.31-67.6/SF
<b>Veneerstone</b>	Stone Poly	12 lb/sf	3 layers under needs to prepare	<b>N</b>	\$11.74-30/SF
<b>concrete stone</b>	Concrete stone	12-15 lb /SF	Depends of weather	<b>Y</b>	\$11.74-30/SF
<b>Paneled Stone</b>	Cement-base fiber-reinforced composite	4 lb/sf	200sf/day	<b>N</b>	\$16 /SF
<b>Featherstone</b>	Cellular Nanocomposite	4 lb/sf		<b>Y</b>	

## Addendum

### ECOS ENGINEERING

6027 Dalford Hill NW

Calgary, Alberta T3A 1L5

Phone/Fax: (403) 288-2733

ATI - Composites Canada Inc.  
12112 - 67 St.  
Edmonton, Alberta T5B 1M7

June 13, 2011

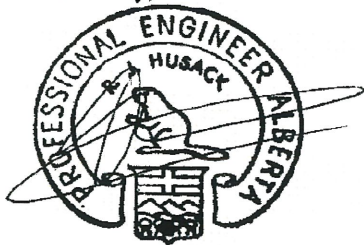
Attention: Mr. Michael Mabey  
President

This letter will serve to confirm that I have reviewed the information provided regarding the composition of your FeatherStone Rock products and confirm that all the ingredients used in the manufacture of the FeatherStone decorative rock products are inorganic and completely non-combustible.

This would then allow these products to be installed in applications and situations where non-combustible materials are required to meet building and fire codes.

I would strongly suggest that the tradesperson follow good trade practices when installing this stone product such that all installation procedures, structural elements adhesives and mortar should also be non-combustible in order to meet national and provincial fire codes.

Yours truly,



R.J. Husack, P. Eng.

ENGINEERS, CONSULTANTS, PLANNERS, ANALYSTS, AND INVESTORS

We are Passionate People developing New  
Technologies reducing the industry Cost and  
Protecting the Environment

Mission Statement

