

### APPLICATION

Production Log / Leak Detection Survey to determine Liner Top Leaks and Casing Integrity

### TECHNOLOGY

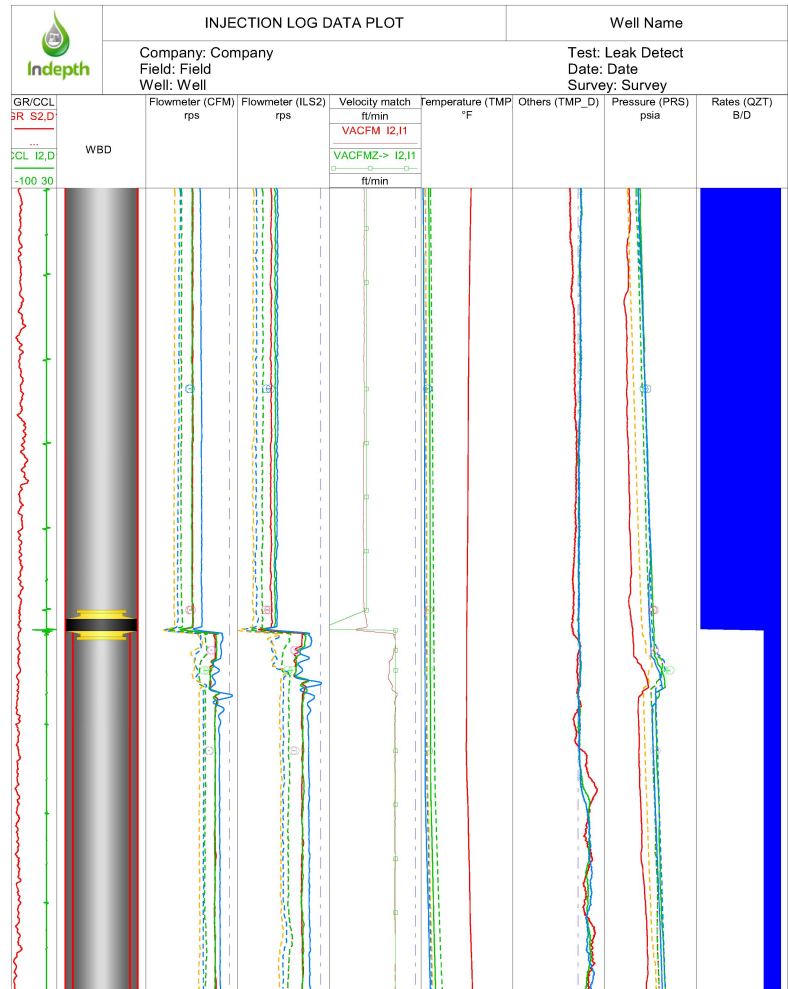
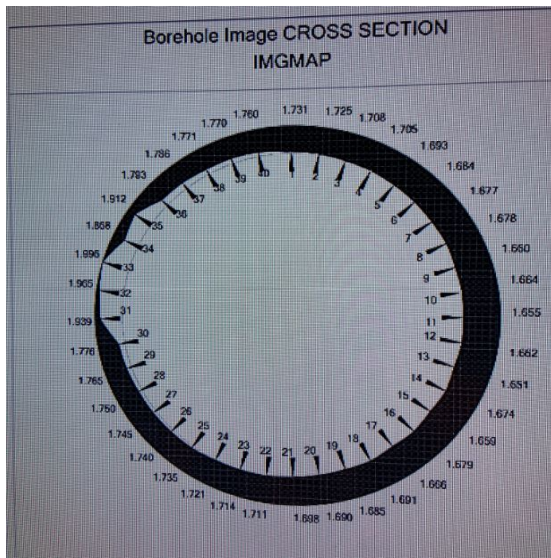
Production Log Survey  
Temperature Decay Analysis  
Indepth Performance Monitoring

### LOCATION

Texas, USA

### CHALLENGE:

To determine the loss of wellbore integrity during pump down operations. Perforating guns could not be pumped down past a certain depth. The operator suspected that a casing or liner top had developed an issue. The operator reached out to Indepth to help evaluate the extent of the casing integrity, a leak detection survey & MFC were run to determine the wellbore issues.



### INDEPTH SOLUTION:

Indepth ran a series of water injection and shut in passes to first evaluate the inflow and second to evaluate the water channeling below. An Indepth Well Performance Monitor was ran in conjunction with the survey to confirm well injection stability.

### CLIENT VALUE:

It was determined from the Indepth HDD Leak Detection Survey, the liner top had failure & the injection water could easily by pass the Liner Top & flow down the annulus. The MFC results confirmed what the Indepth Leak Detection Surveyed had measured. In one simple run the Indepth Production Solutions Leak Detection System can easily locate wellbore integrity issues & deliver the results on location to make accurate & efficient decisions.

