

Screen Surgeon

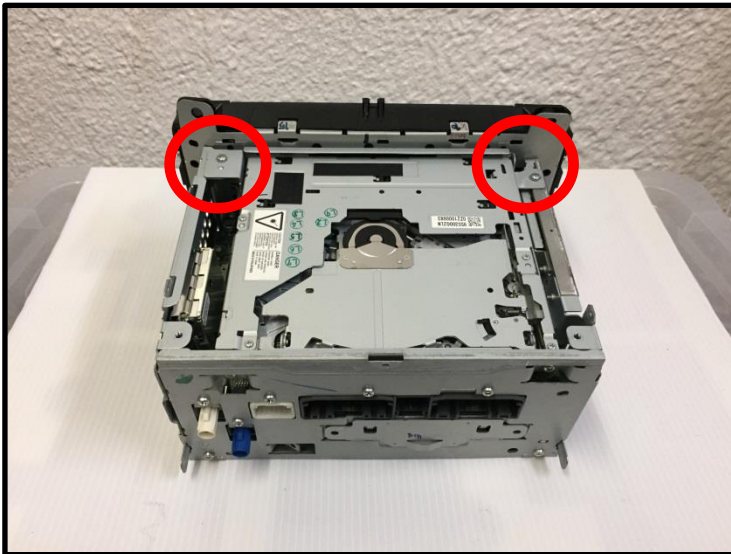
RBZ & RHB
Door Removal & Installation
Instructions

Screen Surgeon



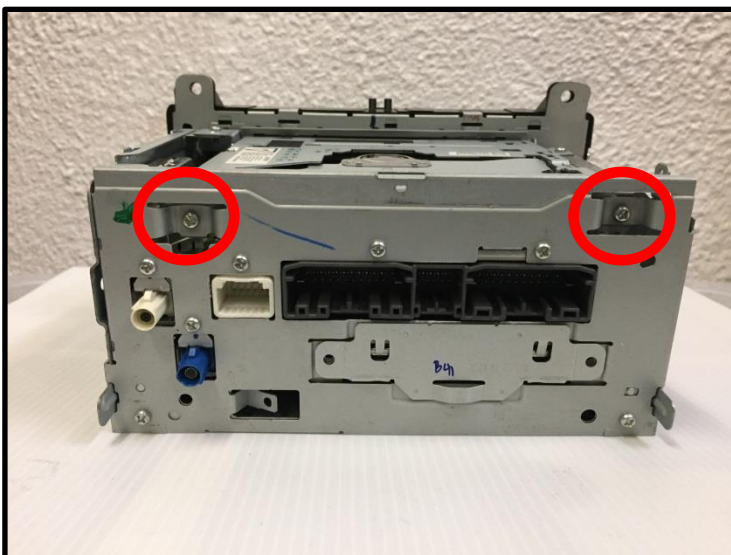
Step 1 –

Remove 2
Philips head
screws from
top cover of
radio



Step 2 –

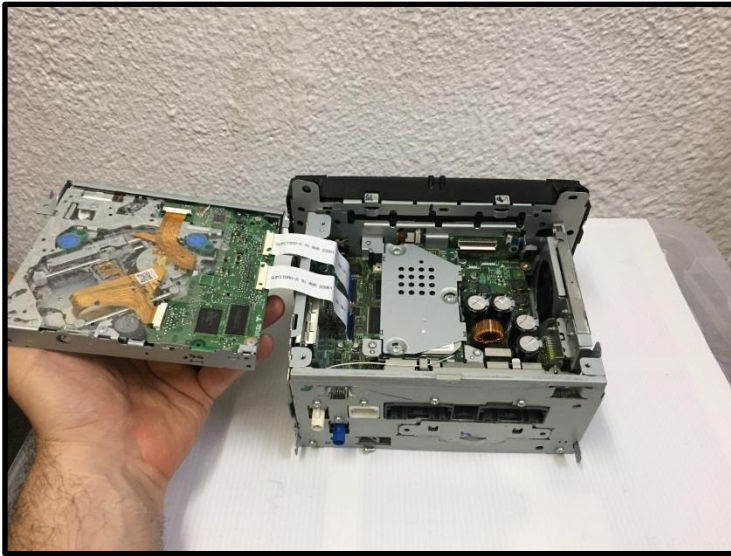
Remove 2
Philips head
screws from
each side of
DVD drive



Step 3 –

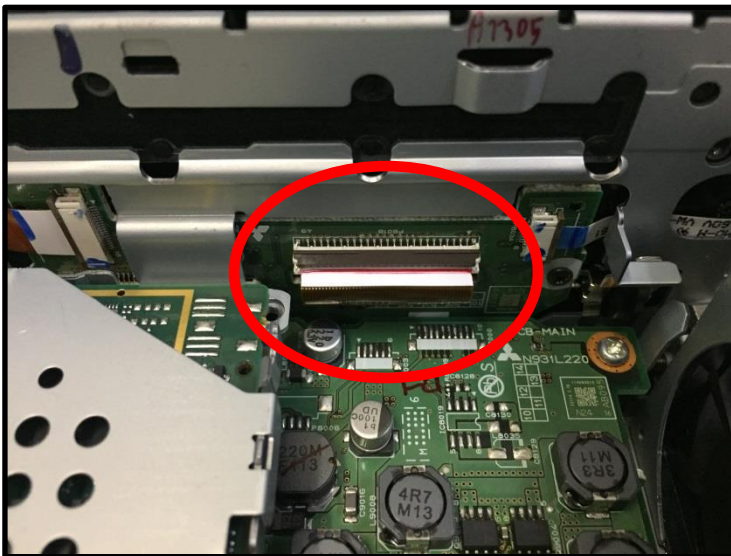
Remove 2
Philips head
screws from
back side of
radio holding
in DVD drive.

Screen Surgeon



Step 4 –

Remove DVD drive from radio and hold in hand



Step 5 –

Unclip and pull out ribbon connector. Place DVD drive back in radio



Step 6 –

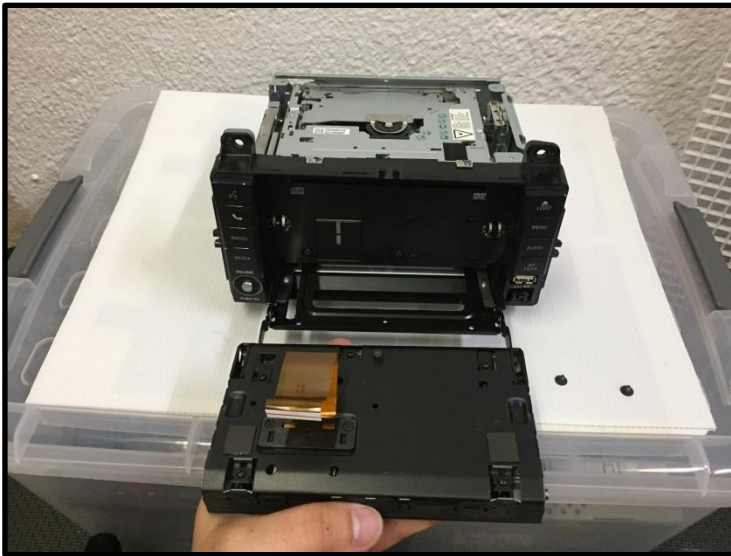
Extend door and remove allen key screw from each side.

Screen Surgeon



Step 7 –

Once both screws are removed twist door to unseat from tracks.



Step 8 –

Pull door out of radio.



Step 9 –

Take new door from package and insert at an angle to seat into tracks

Screen Surgeon



Step 10 –

Seat door into tracks and flip up to top or track. Fish ribbon through slot.



Step 11 –

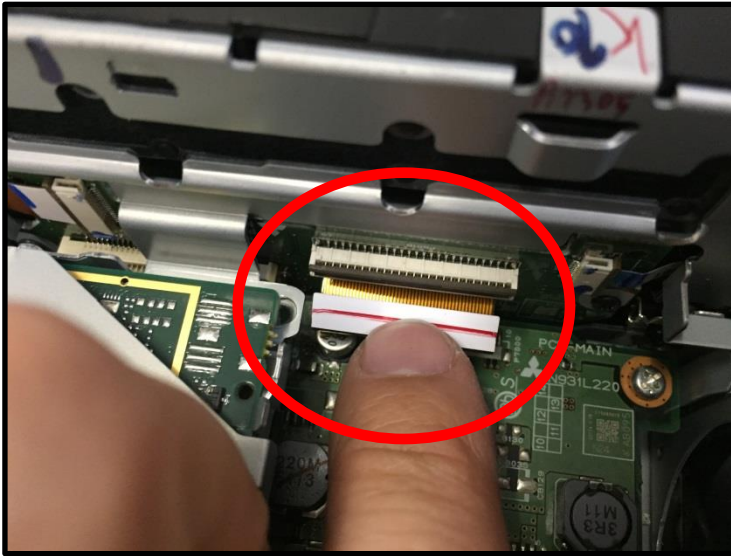
Align door onto ejector tracks. Be sure to center hole, screws need to thread in fully



Step 12 –

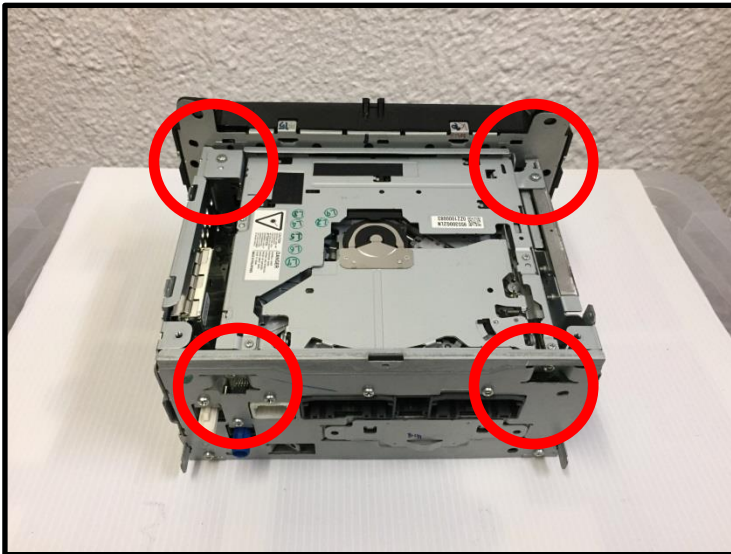
Once both sides are screwed back in, push door back into radio.

Screen Surgeon



Step 13 –

Remove and hold DVD player again. Re-Insert ribbon connector. Be sure to push into marker line then close clip



Step 14 –

Replace the 4 Philips head screws holding in the DVD drive



Step 15 –

Replace cover by first inserting 3 tabs in back of bezel

Screen Surgeon



Step 16 –

Replace 2
Philips head
screws.



Step 17 –

Please Leave
Positive
Feedback and
spread the
word about us.

Thank You !