



Contact:  
Kory 320-469-7408  
Kory@bellmonthomes.com



**Voyageur – Country – 1841 sq ft**

**Base Priced @**

**Slab \$379,704\***

**Full Basement \$443,179\***

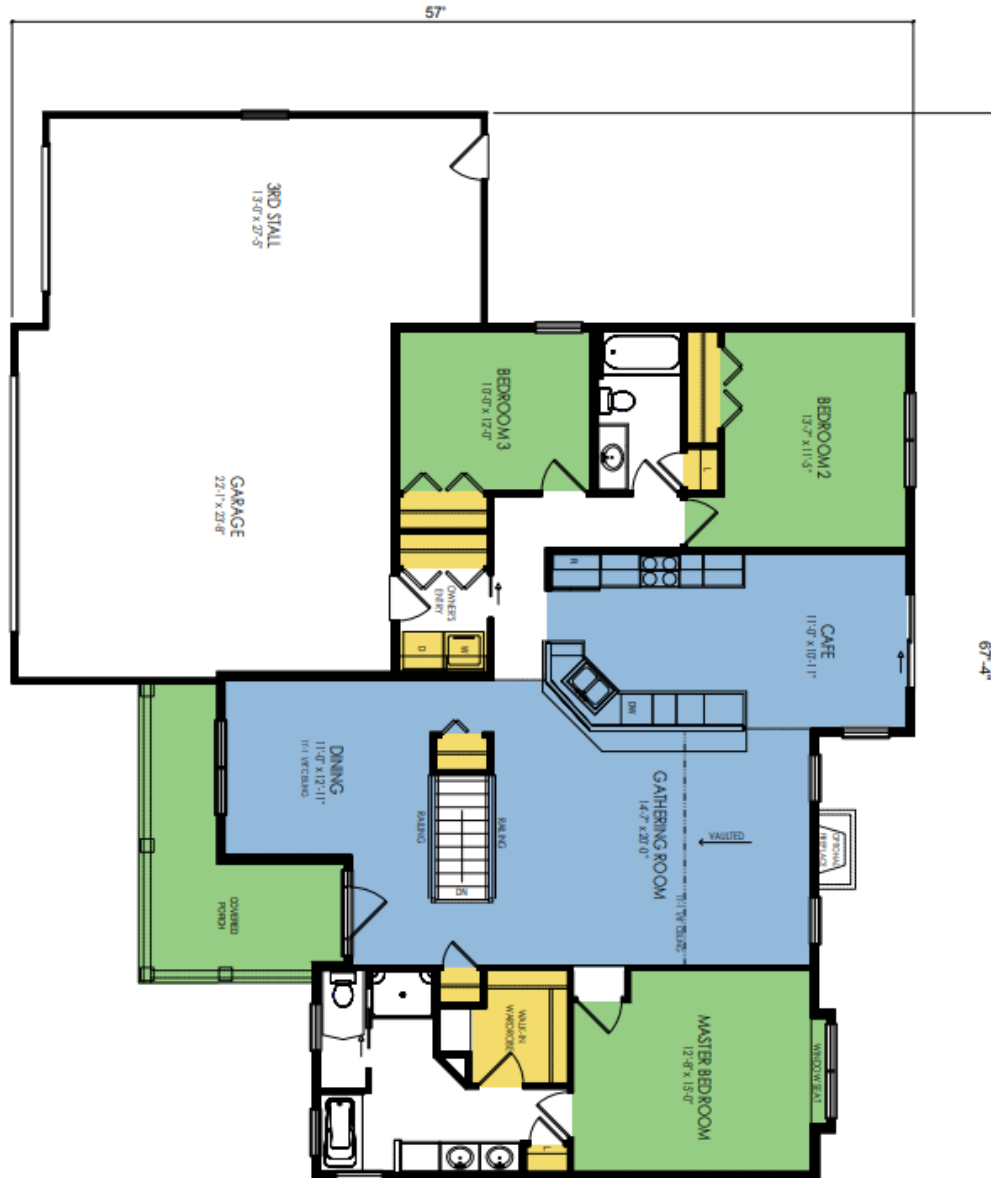
***For permits, septic, well, and excavation on an acreage lot add  
+\$40,000 to above price.***

***For permits, sewer, water, and excavation on a city lot add  
+\$30,000 to above price.***



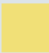

*(\*these are rough ballpark prices & lots/land not included in price)*

[www.bellmonthomes.com](http://www.bellmonthomes.com)

## Voyageur – Country Floor Plan



By viewing, saving, printing or otherwise copying this plan/drawing, you acknowledge and recognize Wausau Homes, Inc.'s exclusive copyright herein and agree not to distribute, reproduce, modify, or otherwise use this plan/drawing for any commercial purpose (such as to construct a home or develop a similar plan yourself or through a builder not partnered with Wausau Home), or allow another person to do so, without the express written permission of Wausau Homes, Inc.

<b>Main:</b> 1841 Sq. Ft.				
<b>Total:</b> 1841 Sq. Ft.	gather	rest	organize	flex

# Bellmont Homes: House Pricing

\*All of our homes are customizable; Prices can vary based on your selections.

## Unfinished Full Basement Includes:

- 8' Block wall basement with footings and concrete per MN code
- 1 Egress window in basement
- 1 Roughed in bathroom in basement
- 2 x 10 floor joists between floors

## Slab on Grade (Patio Home) Includes:

- Footings and slab per MN code
- 2 Story homes come with 18" open web floor truss system

## Both Foundations Include:

- HVAC – high efficiency forced air gas furnace with A/C
- Un-insulated garage (if current plan has garage)
- Insulated steel backed garage door(s) (if current plan has garage)
- Vinyl Siding
- Plumbing per code with our standard fixtures included
- 200 Amp electrical service per code with our standard fixtures included
- Vinyl single hung windows
- 2 Coats of paint
- Flooring (vinyl and carpet)
- Hollow core 3 panel doors
- All base, trim, and casing in the standard 2"-3" sizes
- Oak cabinets with soft close and dovetail drawers
- Formica laminate countertops

\*Prices do not include lot, landscaping, driveway, excavating, septic/well, SAC/WAC, appliances or permits.

\*Pricing is only valid for Stearns and Kandiyohi counties (in Minnesota), are based on current material costs, and are subject to change per location, season, and scope of work.