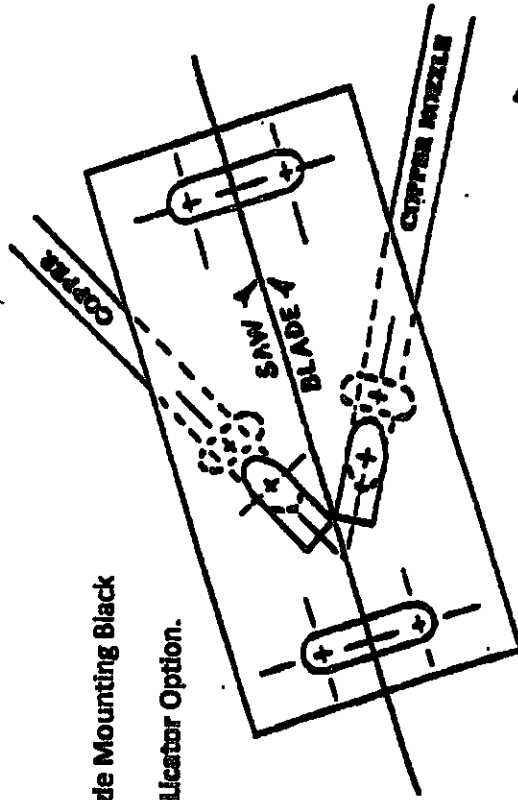


## Mounting Instructions:

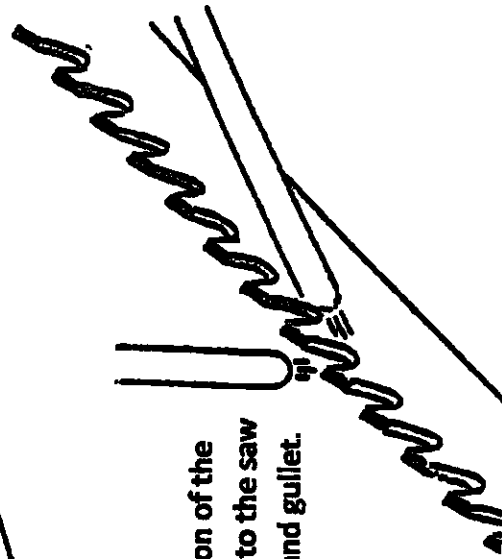
1. Position block along the blades path, opposite the area where the blade cuts the workpiece; trace the edge of the blade onto the side to the housing facing the blades teeth.
2. Mounting Holes: Find the approximate midpoint of the blade and using this line, drill and tap two  $\frac{1}{8}$ -20 holes 3-1/4" apart. Use these 2 holes and two machine screws to attach the nozzle mounting block to the housing.
3. Fluid Ports: Use the attached nozzle mounting block as a drill jig.. Use a 9/32" drill to drill two angle holes.
4. Nozzles: Insert copper nozzles into the slip fittings of the mounting block. Slide then through the block until they are protruding out the bottom.
5. Spray adjustment: Make sure the MerLube/ air mixture is centered on the teeth of the band saw. Adjust as needed for proper alignment.

Nozzle Mounting Block

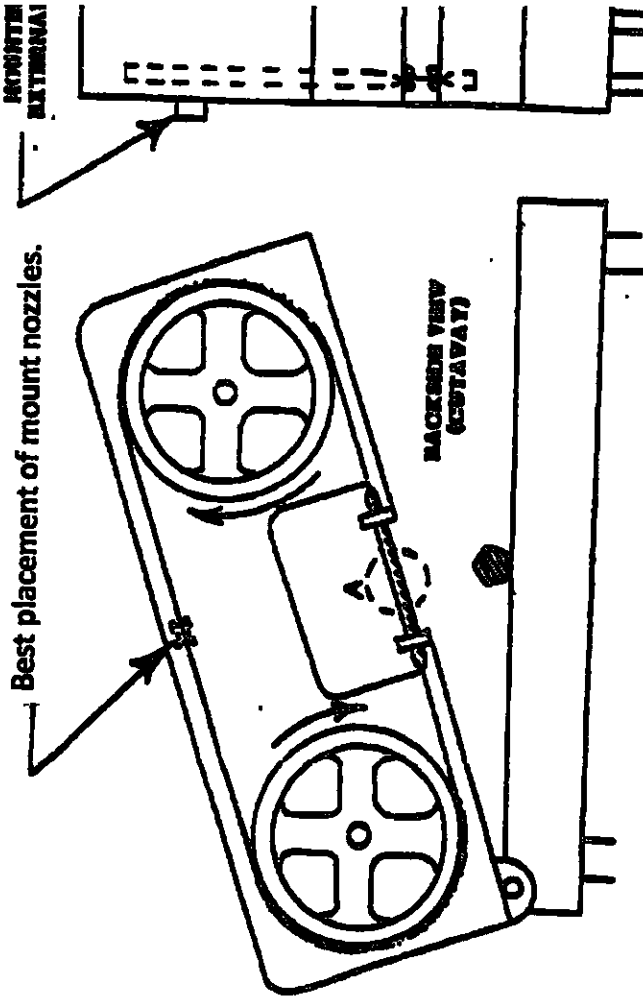
MerLicator Option.



Relative position of the copper nozzle to the saw blade, tooth, and gullet.



## Horizontal Band Saw



Best placement of mount nozzles.

DETAIL A



Install all nozzles so the MerLube hits the face of the tooth (gullet).