

Rail Fence Pinwheel block

Your block should be 12.5" UNFINISHED. Finished Size (once sewn into the quilt) is 12".

For each block, you will need:

<u>Fabric/Color</u>	<u>Cut Size</u>	<u>Quantity</u>
Blue-1*	2.5" x 6.5"	4
Blue-2	2.5" x 6.5"	4
Blue-3	2.5" x 6.5"	4
White or Off-white (solid or small print)	2.5" x 2.5"	8

*Use at least 3 different blue fabrics, preferably lighter & darker values for a little contrast. Or, you can be totally scrappy and use 12 different blues. Just separate them into 3 piles of 4 strips each.



Step 1

SEW ALL SEAMS AT 1/4"

Step 1:

Draw a line corner to corner on the back of all 8 of the White 2.5" squares.

Step 2:

Set aside the 4 Blue-2 strips. These will be the middle piece of each sub-block.

Step 3a:

On the remaining 8 strips (4 of Blue-1 and 4 of Blue-3): Place a white square, right sides together, at the top of a blue strip, with the **drawn diagonal line starting in the TOP LEFT corner**. *This is important! If you turn it so the drawn line is on the opposite diagonal, you won't get a pinwheel in the center of your finished block.* Sew on the drawn line.

Step 3b:

Cut 1/4" to the right of the stitched line.

Step 3c:

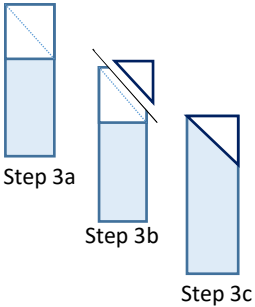
Fold back the white triangle and iron flat.

Step 4:

Assemble 4 identical sub-blocks. Each will use one Blue-1, one Blue-2, and one Blue-3 strip. Lay a Blue-1 on your sewing machine right-side up, and with **the white triangle at the top**. Set a Blue-2 on top of it, right-sides together, and sew along the right edge. Open and iron towards Blue-2. Then set a Blue-3 right sides together with Blue-2, making sure **the white triangle is at the bottom**, and sew along the right edge. Open and iron towards Blue-2. The sub-block should be 6.5" square. Repeat with the remaining strips to make 4 identical sub-blocks.

Step 5:

Sew the 4 sub-blocks together as shown. Rotate each sub-block so that the Blue-3 strips touch in the center to create a pinwheel. The completed block should be 12.5" square.



Step 3a

Step 3b

Step 3c



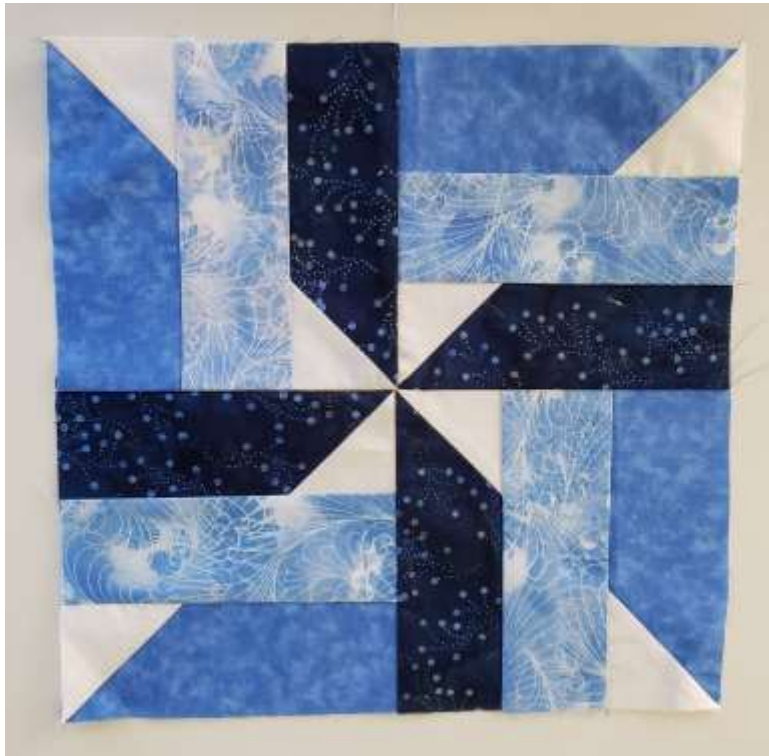
Step 4



Step 5

Thank you for helping! These blocks will be used to make bed (60" x 80") or lap (40" x 48") quilts for CAL Vets.

1 completed block:



If you sew the blocks together with no sashing, you get pinwheels at each joining of blocks. Here's a mockup of how it would look when lots of blocks are sewn together, assuming all blocks have a set of light, medium, and dark blue strips, and they're sewn in the same order.

