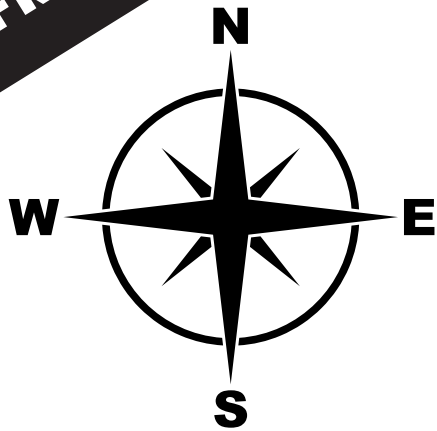


**TAKE ONE!  
IT'S FREE!**



# The Nicholas Center

## NAVIGATOR NEWS

Fun news and friendly facts about your community.

Written and designed by The Nicholas Center Navigators.

[tncnewyork.org](http://tncnewyork.org)

Port Washington, NY

June 2023

Issue 255

**T.N.C. Chocolate Lab**  
Port Washington, NY  
Est. 2023

TNC is proud to announce the launch of our new vocational skills program - TNC Chocolate Lab!

Participants will explore the world of chocolate decorating in the Lab! Watch for special creations as we get started!

**SMUSHT**

Fresh made ice cream and cookies.  
Proud to be Neuro-Inclusive

516-234-0580 | [info@smusht.com](mailto:info@smusht.com)  
[smusht.com](http://smusht.com)

**Douglas & James THE ICE CREAM**

Sweet Treats on the Wharf  
Douglas & James Ice Cream  
405 Main Street  
Port Washington NY 11050

**Our Community Partners**

**The Nicholas Center**  
Innovate, Inspire & Include  
516-767-7177 |

Email [news@nicholascenterusa.org](mailto:news@nicholascenterusa.org) if you would like your event posted, or you would like to put an ad into the newsletter!

For more information check out [tncnewyork.org](http://tncnewyork.org)

Come to Prism Med Spa and Reveal Your Inner Light

**PRISM MED SPA**

Mention this ad and receive \$50 off your 1st treatment and 25% Off your first package.

41 Main St, Roslyn NY  
Tel: 516-277-2293 [www.prismmedspa.com](http://www.prismmedspa.com)

### Events In Port Washington

**June 2nd** :Tommy Rush and Loudon Wainwright, 8-10pm, Jeannae Rimsky Theatre

**June 4th**: Harborfest Dock Day and Craft Fair, 10am- 5pm, Town Dock Manhasset Bay and Lower Main Street

**June 9th**: Fabulous Folk : Iris Dement, 8-10pm, Jeanne Rimsky Theatre

**June 10th**: The Weight Band Featuring Members Of The Band and Levon Helm Band, 8-10pm, Jeanne Rimsky Theatre

**June 11th**: Growing Love Community Garden Sunday Garden Class, 2-3pm, Manorhaven Boulevard directly behind our lady of Fatima's parking lot

**June 20th**: Garden Club Meeting, and Floral Designer, 10:30am-12:30pm, Port Washington Library in the Lapham Room

### How's it Possible:The Production of M&M's

I Love M&M's because the milk chocolate melts in your mouth. Also it's my favorite candy because it's tasty and I like chocolate! Many people don't know the process of making these delicious candies. 50% of all M&M's sold in the US are made at Mars Chocolate North America Campus in Hackettstown, New Jersey. These amazing candies have an interesting manufacturing process. Step 1: They pour the chocolate into tiny molds, which then establishes the chocolate center of the candy. Sometimes the chocolate is coated onto peanut or almond, or has a peanut butter or chocolate center. Step 2: Once the candies are formed they are tumbled which makes the center smooth and rounded. Step 3: When the chocolates are hard they are moved to the conveyor belt, where they go through the panning process. Step 4: During the panning process the chocolates are rotated and are sprayed with sugar and corn syrup at timed intervals, which allows each coat to dry evenly. The chocolate center also gets many coatings. Step 5: The color is blended to a finishing syrup and each batch has a different color. The liquid candy then dries into a hardened shell. Step 6: The colors are separated into categories of red, yellow, blue, green, orange, brown, and purple. Then the candies go into the machine that stamps the letter m on the shells. About 2.6 million M&M's go to this machine per hour. Step 7: A packaging machine weighs the candies, puts them in bags and seals the packages. Step 8: The finished packages are then put into shipping cartons, and get ready to be shipped out.

### That's Inspirational: Illuminations: Reflections of YOU

Illuminations: Reflections of Earth was a show that played at Walt Disney World's Epcot theme park from 1999 to 2019. The show was created as part of the park's Millennium Celebration and it had its first performance on October 1, 1999. It really upset a lot of people when it played for the final time on September 30, 2019. I saw the last performance of Illuminations: Reflections of Earth with my family, as well as the first performance of its interim replacement, Epcot Forever. One day, I eventually came across a YouTube video named Illuminations: Reflections of YOU by Mickey Views. The host asks people questions about Illuminations: Reflections of Earth. Such questions include the first time they saw the show, the number of times they have seen the show, memories they had involving the show, their favorite part of the show, whether or not they are excited for the future and whether they would pick Illuminations: Reflections of Earth over Happily Ever After, the nighttime fireworks show played at Walt Disney World's Magic Kingdom theme park. I enjoyed watching Illuminations: Reflections of Earth as a child and I even programmed my Christmas lights to play the music from the show in 2018. You can watch Illuminations: Reflections of YOU by scanning the link below.

By Will S.



**PAINTING WITH FLOWERS**  
AN ENCHANTING BOUTIQUE FOR WOMAN AND HOME

298 Main Street  
Port Washington, NY 11050  
(516) 883-4164  
[paintingwithflowers@msn.com](mailto:paintingwithflowers@msn.com)

**GREENS**  
**IRISH PUB**  
Manhasset, New York

- 436 Plandome Road -



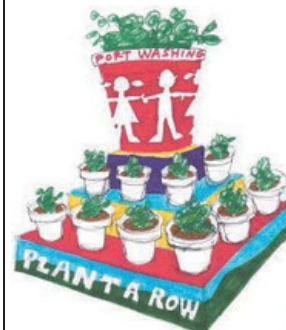
**Greater Port Washington Business Improvement District**  
[www.portwashingtonbid.org](http://www.portwashingtonbid.org) 516-883-8890

**Spectrum Suds**  
THE LAUNDRY SERVICE THAT OFFERS LOADS OF OPPORTUNITIES  
48 HOUR TURNAROUND  
10% off your 1st order!

**Boutique Laundry Service**  
416 Main Street, Port Washington  
Contact us - 516 - 767 - 7187 (ext:2)



14 Vanderverter Ave #255  
Port Washington, NY 11050  
516-767-0800  
[arnie@arnieherz.com](mailto:arnie@arnieherz.com)



**Plant A Row for the Hungry**  
Port Washington

A local charitable organization which provides home grown fresh fruits and vegetables to those in need.

Join us on Facebook  
516-510-8408



menonthemove.com



As New York State's largest health care provider and private employer, Northwell Health's mission is to improve the health of our communities. Our focus is on prevention, wellness, and providing the full continuum of diagnosis, treatment and after-care services to all those we serve.

### COMMUNITY CHEST OF PORT WASHINGTON

Established in 1949



The Community Chest is a nonprofit organization whose mission is to provide funds and below market rate rents to charities dedicated to improving the Port Washington community for ALL residents.

Alper's Karmacue - May 20, 2018  
Citizen of the Year - Apr 16, 2018  
Golf & Tennis Outing - May 14, 2018  
Thanksgiving Day Run - Nov 22, 2018  
PW-Manh Bay Kayak Run - July 21, 2018

382 Main Street • Port Washington, NY 11050 • 516-767-2121 • DONATE TODAY: info@portchest.org • www.portchest.org



A Business with a Social Mission

Email: Sales@spectrumdesigns.org  
Call: (516) 767-7187

Spectrum Designs Foundation is a registered 501(c)3 Non-profit - All Donations are Tax-Deductible



Photo booth and favors for all events



elitephotofavors.com 718-406-5240



PO Box 121  
Port Washington NY 11050



Providing music lessons for students of all ages and skill levels living in Port Washington, Manhasset, Great Neck, Roslyn, Glen Cove & the surrounding areas.

1015 Port Washington Blvd  
Port Washington NY 11050  
(516)-441-5526

Navigator News is a program of The Nicholas Center, a Port Washington based nonprofit supporting Autistic young adults to learn, live and work in their community. This paper is developed by people on the Autism Spectrum and seeks to foster inclusion and bring awareness of the capabilities of people with disabilities. Enjoy this complimentary monthly publication of fun, feel-good news for a good cause!

For more information: tncnewyork.org



## That's Incredible!

A mother helps her son with down syndrome find friends. Christian Bowers is 24 years old. His mother Donna Herter posted on facebook asking people nearby if they would want to hang out with her son. She was even willing to offer compensation. 7 men from Wentzville, Minnesota started to visit Christian. They became Christian's friend which made him very happy. They even helped the family by suggesting resources like volunteers who would be happy to hangout with Christian for free.

Phil M.

### Monthly Horoscope!

**June 3rd-** Mercury ends its retrograde. You will begin to gain clarity and confidence.

**June 4th-** Saturn goes retrograde and boundaries will be tested. Practice what you preach, gain resilience, be free, innovative and curious.

**June 14th-** Full moon in Sagittarius. This is time for you to reflect. While you may feel uncertain about things your perspective will change in time.

**June 18th-** Venus, the planet of love confronts saturn. Don't lose sight of your vision based on temporary rejection. Healing can take place the following day on June 19.

**June 22nd-** Everyone should be feeling a little more free and casual when it involves their heart, friendship and mental connections.

### That's Funny!

What falls but never needs a bandage? The rain.

How can you tell the weather's warming up? There's a spring in people's step.

Where does the easter bunny go for breakfast? I hop.

What do you call a well-dressed lion? A dandy lion!

Why did the worm cross the ruler? To become an inchworm.

Phil M, Tara W.

### That's Twisted!

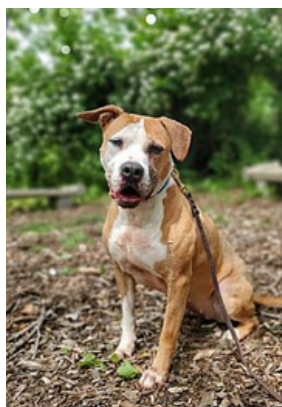
Betty bought butter, but the butter was bitter, so Betty bought better butter to make the bitter butter better

### Facts About: Rabbits

Did you know that rabbits sometimes binky or dance when they are really happy? It is true a binky is when they jump into the air and twist around. The long ears of rabbits and hares help them detect predators and they have powerful back legs.

By Tara W.

### Pet of the Month!



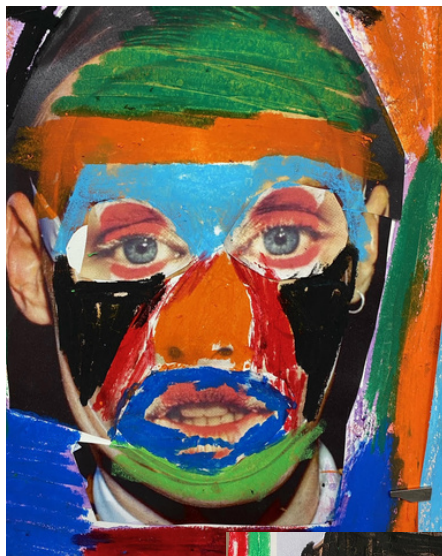
Take me home today!

The Town of North Hempstead Animal Shelter

Emma is a sweet and super smart girl that has so much love to give. Emma has been living at the shelter since 2016, and it's about time this girl find her "forever" family. Emma loves going on long walks on nature trails, crushing an agility course, and of course, a nice petting session. Emma is the perfect balance of playful and couch potato; outside she can keep up with the best of them, but once she's inside, a couch and a soft blanket are all she needs to relax. She loves to cuddle up and get a belly rub! Emma is thrilled to meet all people, but she wants to be the only canine child in the household.

75 Marino Avenue  
Port Washington, NY 11050  
theshelterconnection.com  
(516)8696311

### Artist Of The Month



Billy S.

### Bubba Brown's Treasures

Port Washington Pillows and Towels available for sale. Items are made here in Port by someone with Autism.

Your purchase provides employment, empowerment and raises the awareness of those with Autism.

302 Main St, Port Washington, NY 11050  
(516) 767-6200

### Alex Himel Certified Dog Trainer



Veterinarian recommended  
All training aspects covered  
Will come to your residence  
Excellent references  
516-767-0747 516-633-3384  
www.alexhimel.info



Twin Pines Charitable Thrift Shop & Community Food Pantry  
(516)-883-9777  
382 Main St  
Port Washington NY 11050

### ISLANDPHOTOGRAPHY

Preserving the Moment for over 20 Years

Graduations • School Portraits  
Sports • Panoramic Group Photos  
All Yearbook Needs



Navigator News is all Around Town

Bach to Rock | Prism Med Spa | Diane's Place | PW Train Station | Harbor Deli | Shield's Hardware  
Bubba Brown's Treasures | The Shelter Connection  
Port Washington Diner | North Shore Farms  
Port Washington Library | Port Washington Dunkin Donuts  
Twin Pines | Starbucks | Stop & Shop Port Washington  
Salt Cave | Spectrum Designs Fd. | and more!

Contact us for advertising opportunities. (516)-767-7177