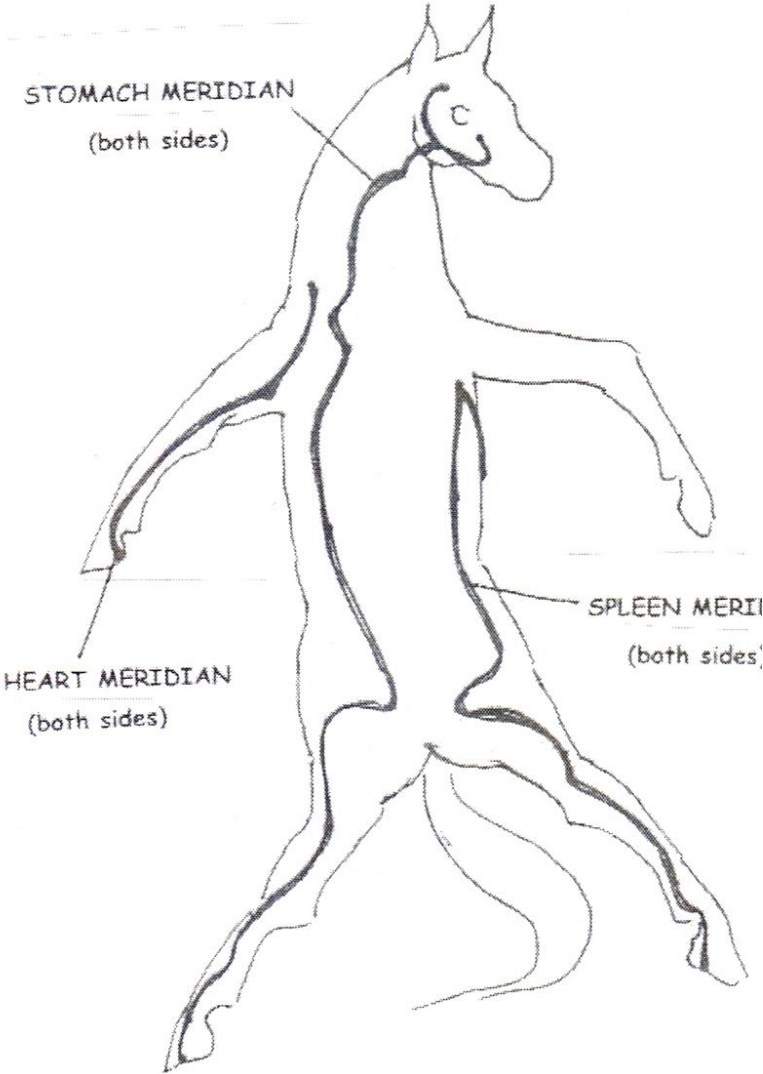
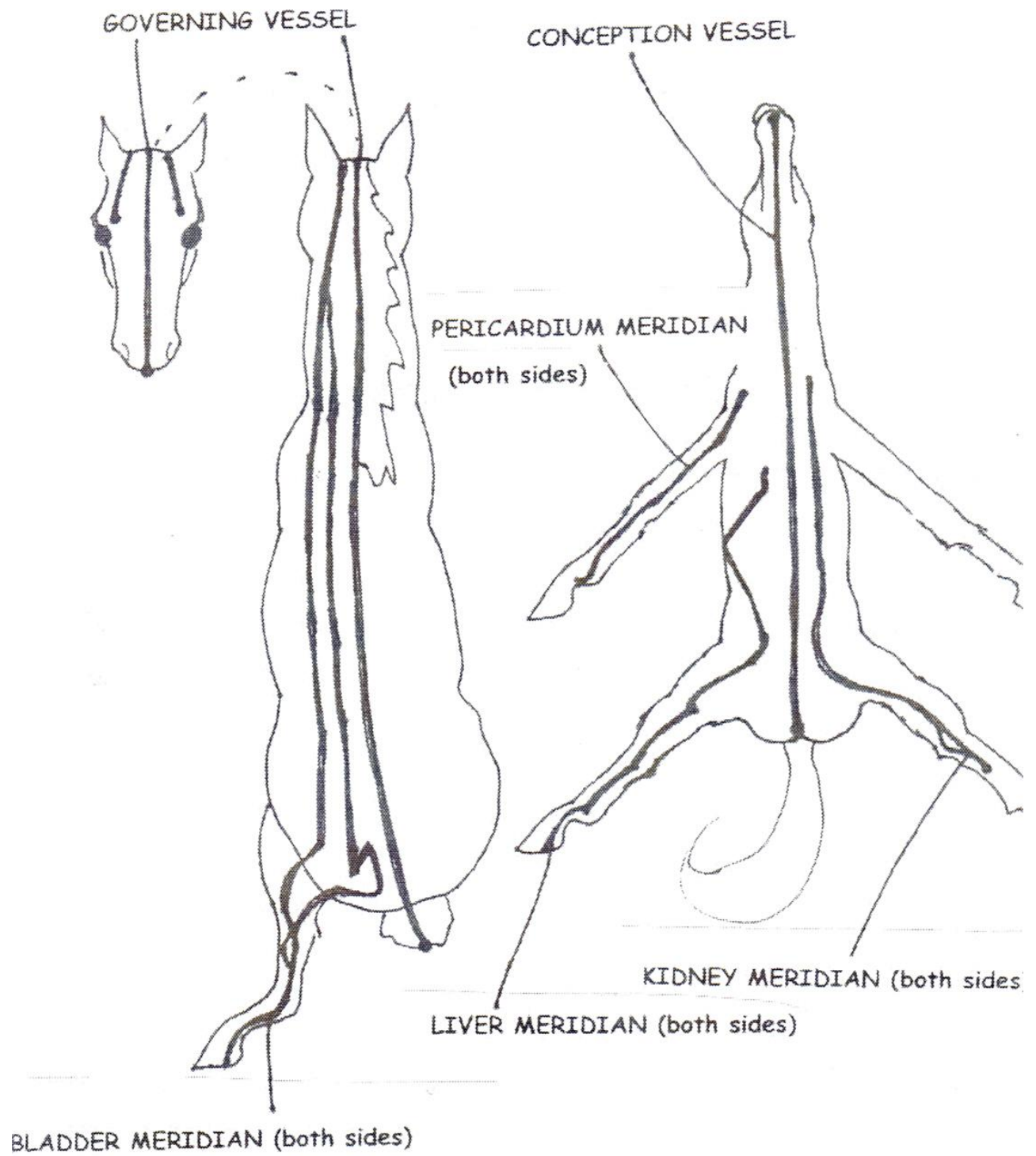


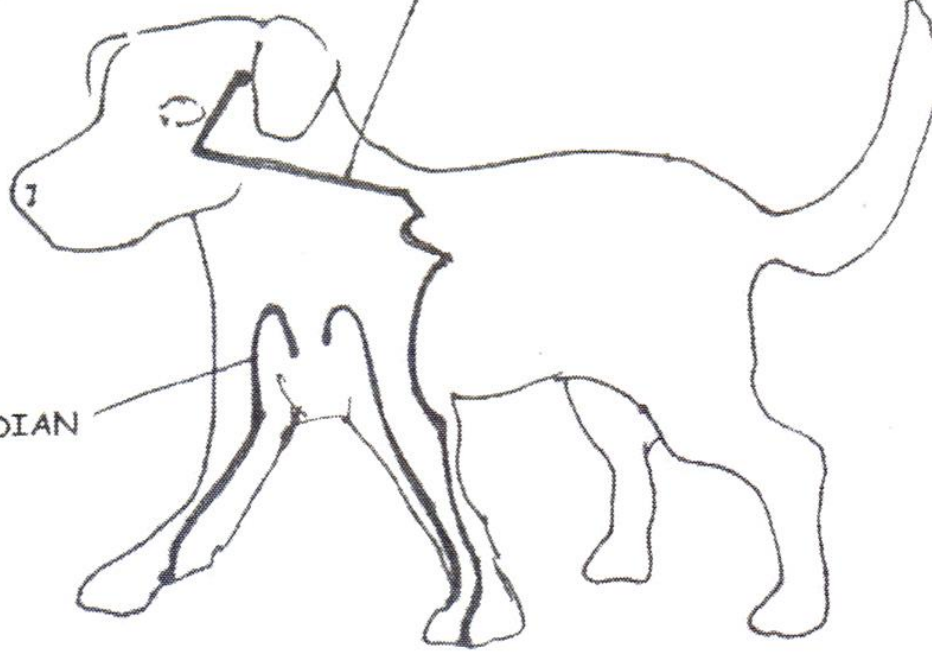
Meridians and Energy Bodies



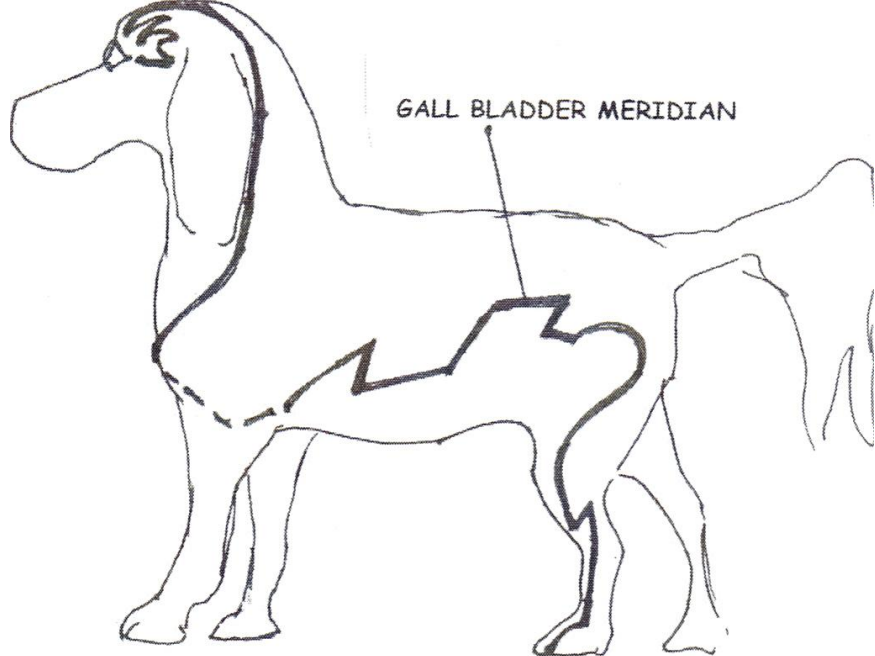


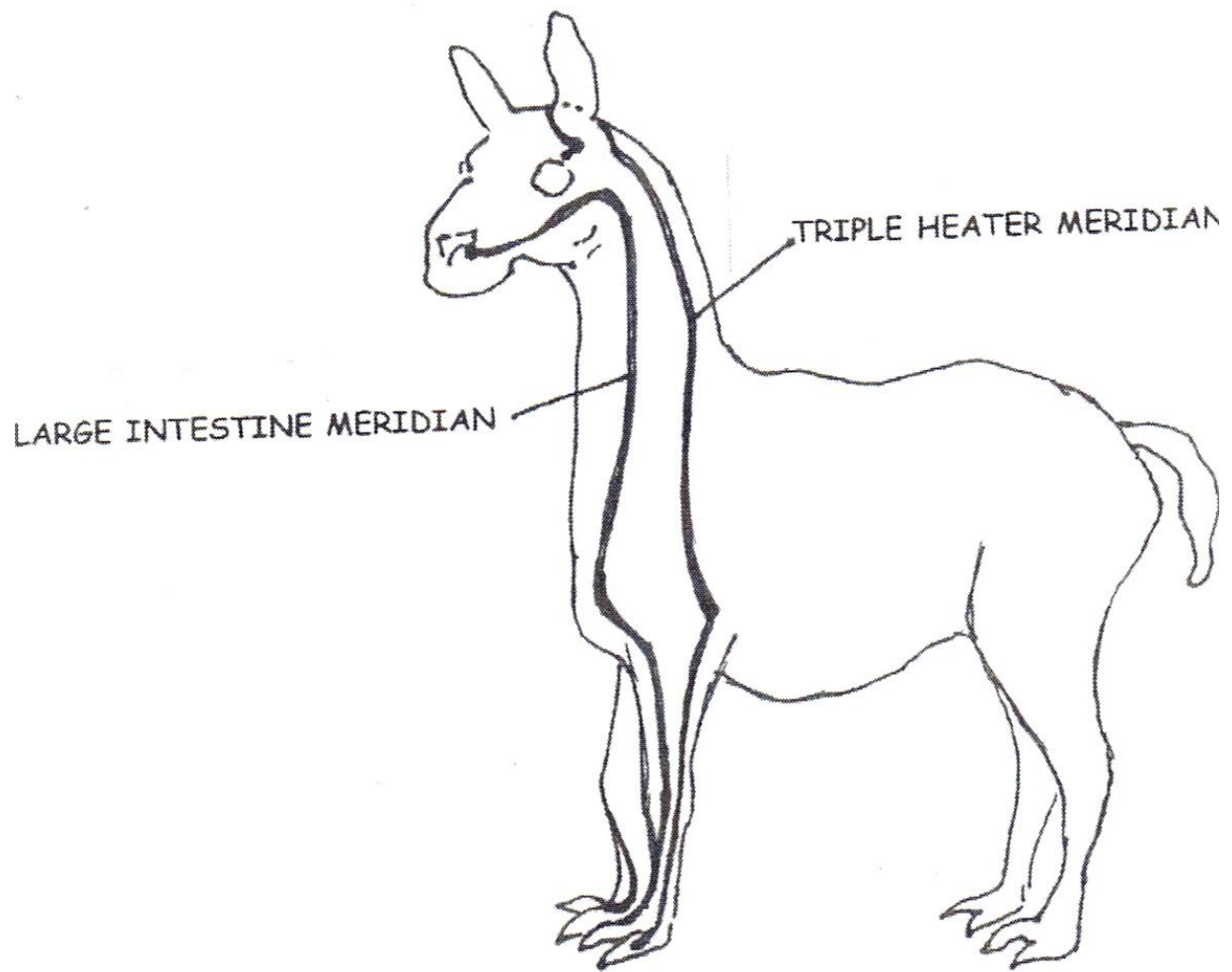
SMALL INTESTINE MERIDIAN

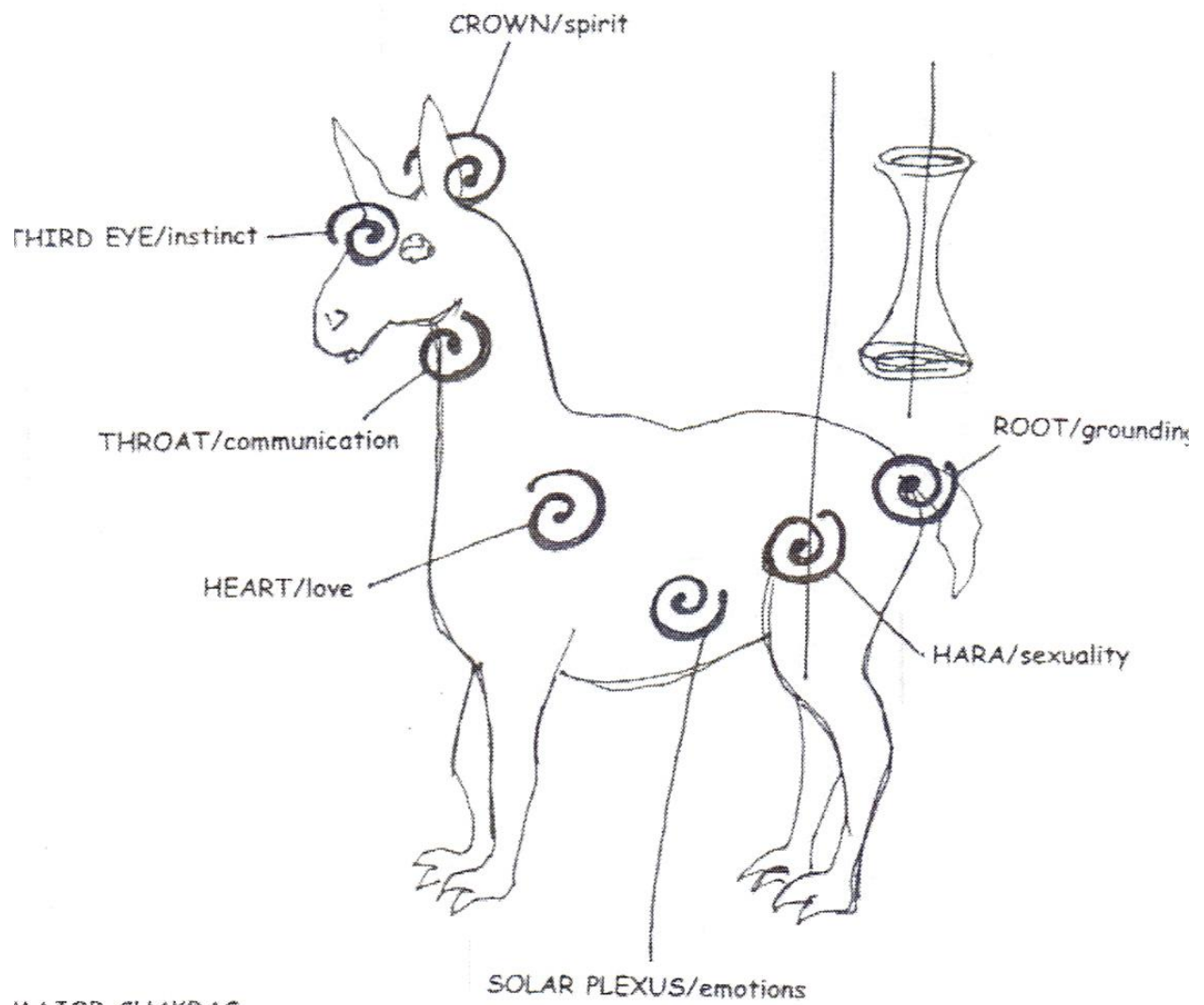
LUNG MERIDIAN

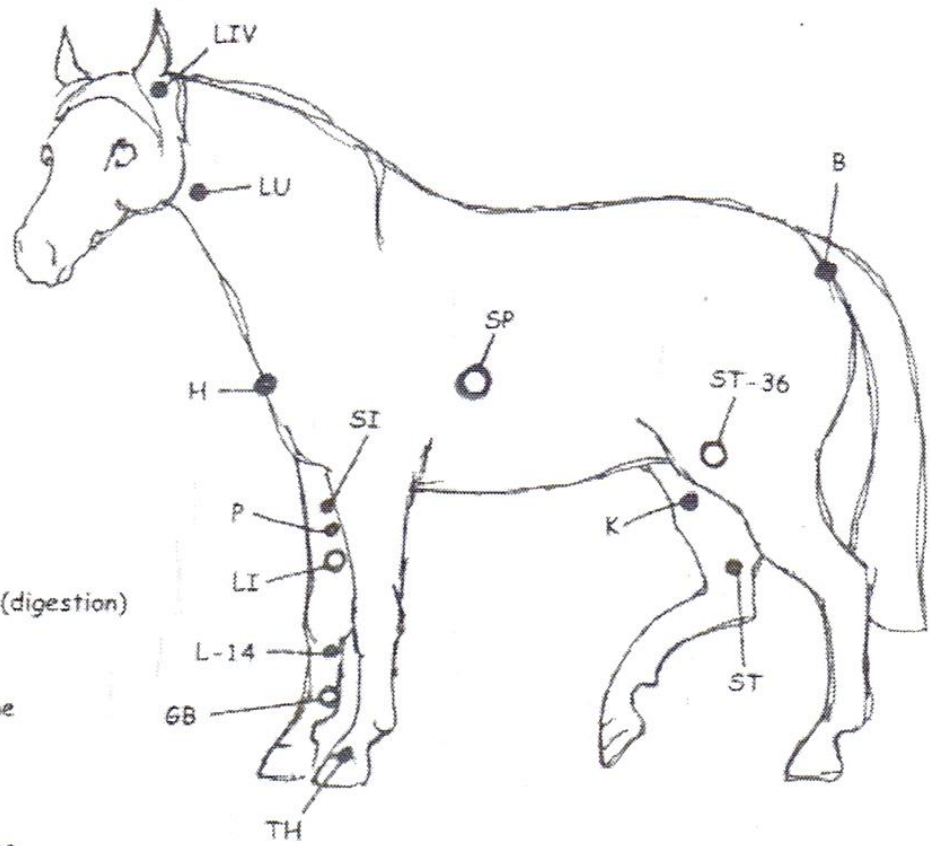


GALL BLADDER MERIDIAN

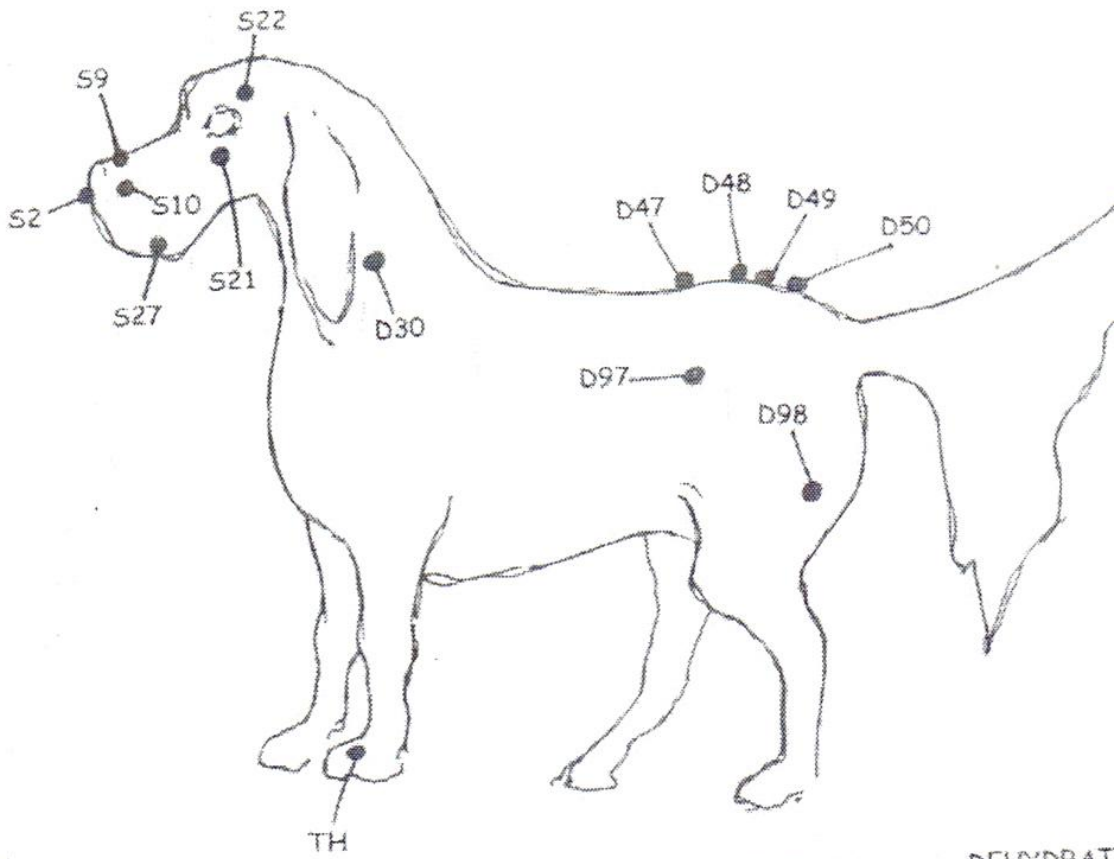








- B - bladder
- GB - gall bladder (digestion)
- H - heart
- K - kidney
- LI - large intestine
- LIV - liver
- LU - lung
- P - pericardium
- SI - small intestine
- SP - spleen
- ST - stomach
- TH - triple heater (triple burner) - influences
Blood flow, lymph flow, Ki movement, digestion,
Secretion & absorption



leap point
uperficial point

CHEN POINTS

TENSION

D47

D48

D49

D50

D98

TH

FATIGUE

S2

S9

S10

D47

TH

DEHYDRAT

S2

S21

S27

D30

D97

TH

