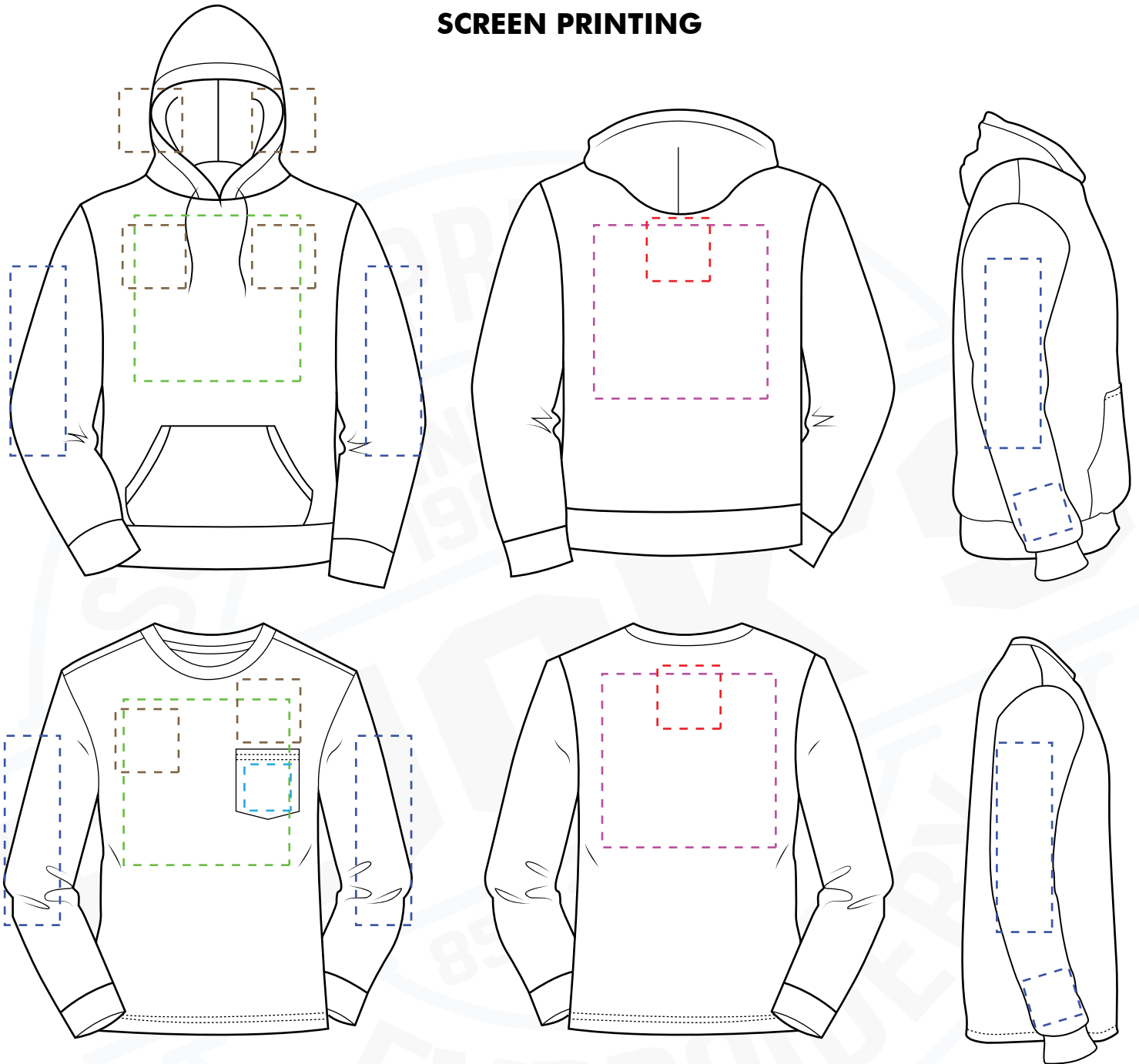


# Standard Artwork Size & Placement

Unless we receive specific sizing instructions, we will use these standard sizes for the following locations.

## SCREEN PRINTING



## LONG SLEEVE / HOODIES / SWEATSHIRTS

### Locations:

- Front
- Back
- Nape
- Left / Right Chest
- Left / Right Hood
- Left / Right Sleeves
- Cuff
- On Pocket

Standard
10.5" W x 14" H
11" W x 14" H
5" W x 4" H
4" W x 4" H
3.5" W x 3.5" H
3.5" W x 12" H
3" W x 3" H
2.75" W x 2.75" H

Max Print
14" W x 16" H
14" W x 16" H
6" W x 6" H
6" W x 6" H
4" W x 4" H
3.5" W x 14" H
3.5" W x 6" H
Garment Specific

Youth
9" W x 9" H
10" W x 10" H
3" W x 3" H
3" W x 3" H
Garment Specific
Garment Specific
Garment Specific
Garment Specific

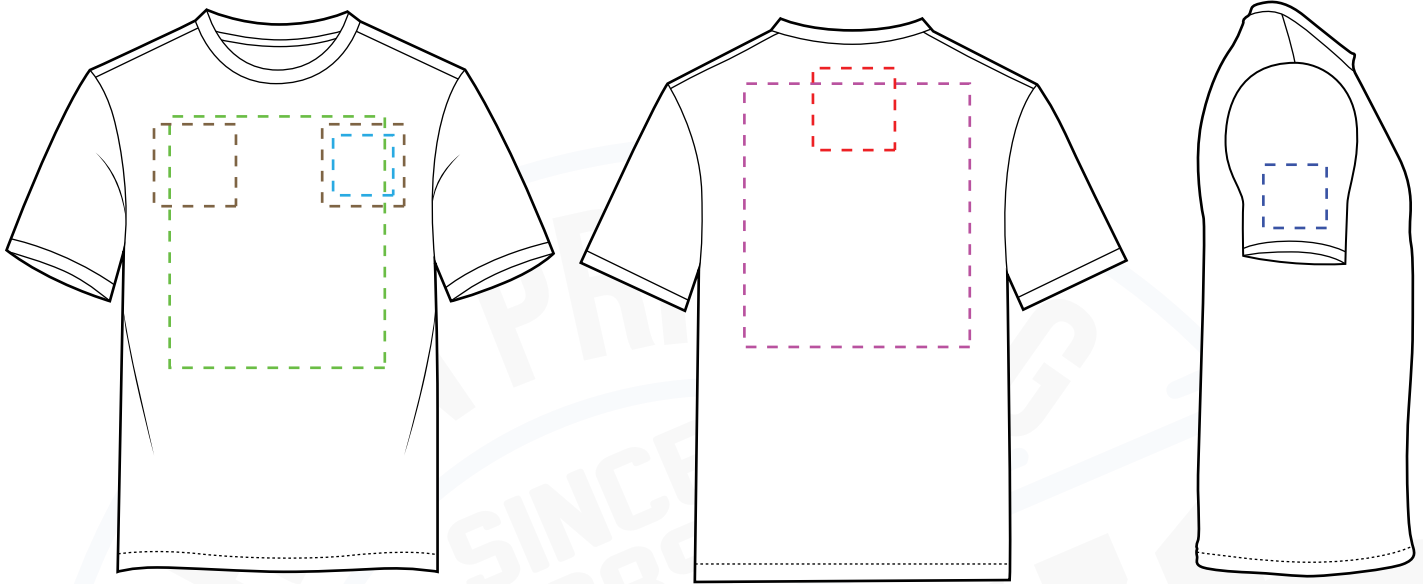
Toddler
5" W x 5" H
6" W x 6" H
2.5" W x 2.5" H
2.5" W x 2.5" H
Garment Specific
Garment Specific
Garment Specific
Garment Specific

Other locations are available upon request. Print sizes are subject to change depending on garment's specific size/placement restrictions. For art sized over 12", and for certain locations, there are additional fees. The visual aid above is based on adult medium sized garments.

# Standard Artwork Size & Placement

Unless we receive specific sizing instructions, we will use these standard sizes for the following locations.

## SCREEN PRINTING

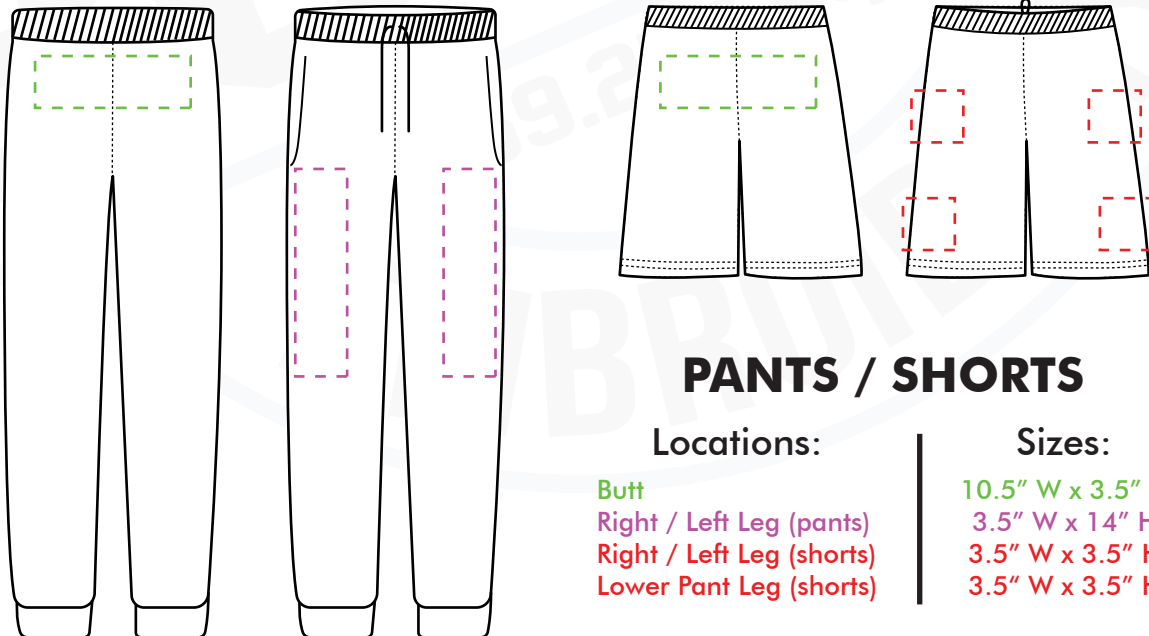


## T-SHIRTS

### Locations:

- Front
- Back
- Nape
- Left / Right Chest
- Left / Right Sleeves
- On Pocket

Standard	Max Print	Youth	Toddler
10.5" W x 14" H	14" W x 16" H	9" W x 9" H	5" W x 5" H
11" W x 14" H	14" W x 16" H	10" W x 10" H	6" W x 6" H
5" W x 4" H	6" W x 6" H	3" W x 3" H	2.5" W x 2.5" H
4" W x 4" H	6" W x 6" H	3" W x 3" H	2.5" W x 2.5" H
3.5" W x 3.5" H	3.5" W x 5" H	2.75" W x 2.75" H	2" W x 2" H
2.75" W x 2.75" H	Garment Specific	Garment Specific	Garment Specific



## PANTS / SHORTS

### Locations:

- Butt
- Right / Left Leg (pants)
- Right / Left Leg (shorts)
- Lower Pant Leg (shorts)

### Sizes:

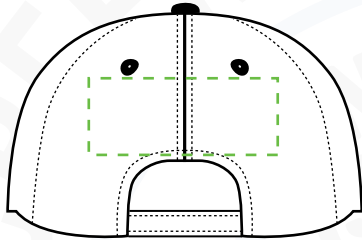
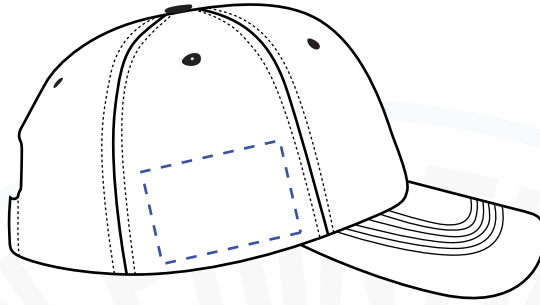
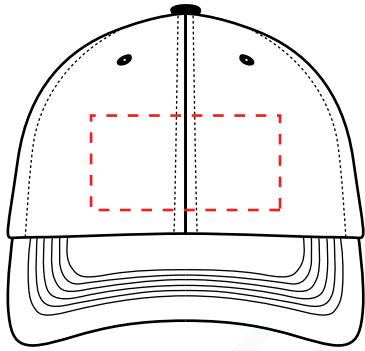
- 10.5" W x 3.5" H
- 3.5" W x 14" H
- 3.5" W x 3.5" H
- 3.5" W x 3.5" H

Other locations are available upon request. Print sizes are subject to change depending on garment's specific size/placement restrictions. For art sized over 12", and for certain locations, there are additional fees. The visual aid above is based on adult medium sized garments.

# Standard Artwork Size & Placement

Unless we receive specific sizing instructions, we will use these standard sizes for the following locations.

## EMBROIDERY



## CAPS

Locations:

Front  
Back  
Side

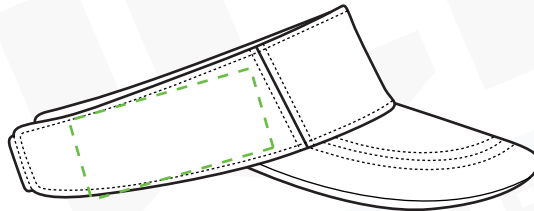
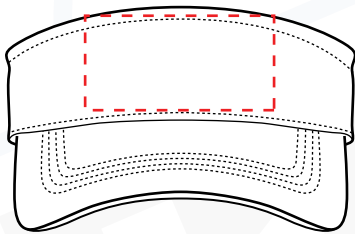
Standard

4.5" W x 2" H

3.6" W x 2" H (arched)

3" W x 2" H

## VISORS



Locations:

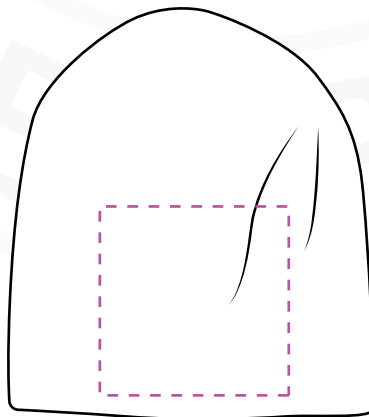
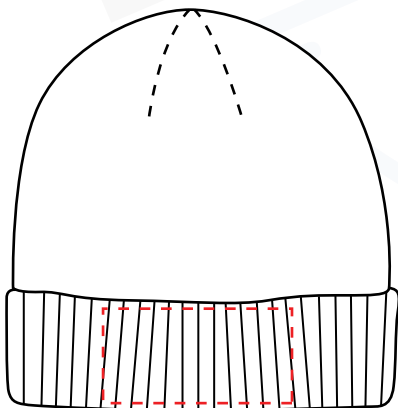
Front  
Side

Standard

4" W x 1.5" H

4" W x 1.5" H

## BEANIES



Locations:

Front (folded up)  
Front (no fold)

Standard

4.5" W x 2.5" H

4.5" W x 4.5" H

Other locations are available upon request. Print sizes are subject to change depending on garment's specific size/placement restrictions. For art sized over 12", and for certain locations, there are additional fees. The visual aid above is based on regular adult OSFA caps, visors and beanies.