

LANDSHARK

BY *TMF TECH*

LS 2200



NEXT GENERATION MULCHING TECHNOLOGY

General Specifications:

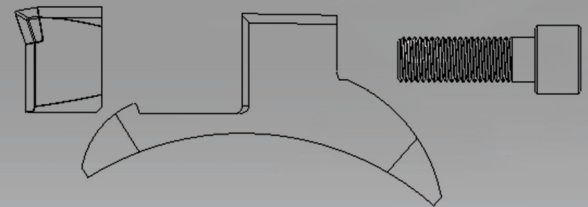
HP Power Range	74 - 149 kW	100 - 200 HP
Volume Flow (min - max)	121 - 197 L/min	32 - 52 gpm
Hydraulic Motor brand	Danfoss	
Hydraulic Motor displacement	110cc	6.71 in³
Max. Pressure	45 MPa	6520 psi
Drive/Belt	Polychain 112 Teeth 68 mm	
Drum Diameter	324 mm	12.75 in
Drum Tip to tip	470 mm	18.5 in
Drum Bearing Size	65 mm	2.57 in
Number of Teeth	46	
Bolt type for drum teeth	Socket head	
Working width	2006 mm	79 in
Total width	2320 mm	91.3 in
Height	1475 mm	58.1 in
Weight	1356 kg	2990 lbm
Metal used	Strenx 100	

Top Features:

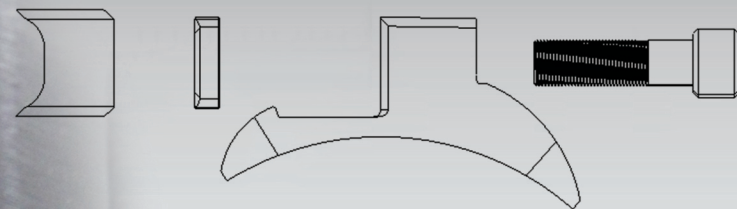
- Case drain pressure protection
- Hydraulic gate
- Continuous velocity drum design
- Replacable liner
- Rubber Curtain with dual chain row protection

Cutting Tools:

- Carbide



- Chipping Reversible



Note: The specifications for a basic vehicle are given on the basis of adequate skills, ability of the operator and under ideal conditions.

North American Authorized Distributor:

TMF TECH
250 Exportation Street, Suite 100
Tracadie-Sheila, NB E1X 1A2 Canada
Tel. 1.506.393-8500 Fax. 506.393.8501
tmftech.ca