



Poway Stamp Club Newsletter

San Diego County's Best Stamp Collecting Club

April 22, 2020

In This Issue

- Next Meeting
- Club Presentation
- Club Notes
- Member Spotlight
- Article: "Editors Corner"
- Articles "Soapbox"
- Member Classifieds
- Stamp News

Poway Stamp Club

The Club goals are "to promote a closer social relationship among stamp collectors of Poway, San Diego and vicinity, and to assist in spreading the knowledge of stamps and the pleasures derived from stamp collecting to those interested in philately."

Contact Us

Poway Stamp Club
12675 Danielson Ct #413,
Poway, CA 92064

Club E-mail

PSCphilately@gmail.com

PSC Website:

Powaystampclub.com
Powaystampclub.org

Next Meeting:

NOTICE:

All Club meetings are postponed until further notice.

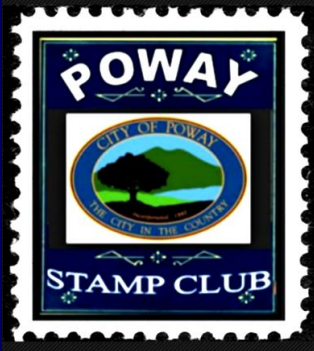
Next Meeting: Our next Poway Stamp Club meeting will be scheduled when our Club President and/or Board have reason to believe that the current uncertain times have passed in regards to the Covid-19 Pandemic.

The **Poway Stamp Club** Newsletter will continue to be produced and sent out to club members. We will utilize this Newsletter and emails to communicate with our membership the status of our clubs activity.

Please contact the club Secretary at PSCPhilately@gmail.com with any information that you would like to have disseminated to the entire club during these uncertain times. Also, please keep us informed of yours or other club members' health situation as appropriate.

Please take advantage of this Newsletter to continue your collecting, all members are allowed a free add in this newsletter, you could use the add to trade or swap stamps with other members via the USPS while we are all isolated. Our website www.powaystampclub.com has a page dedicated to things you can do with your collection while we are in quarantine.

As of this newsletter, we still do not have "confirmed" cases of Covid-19 within our membership. (knock on wood) Everyone please stay safe....



2020 PSC Club Officers:

President: Art Berg
V President: David Klauber
Treasurer: Bill Kolb
Secretary: Trice Klauber
Board (AL): Bill O'Connor
Board (AL): Scott Boyd
Prev. President: Thor Strom
Program Dir.: Bill Wacenske

PSC Club Volunteers:

Registrar: Diane Maisonneuve
Club Auctioneer: Duane Pryhoda
Club Librarian: Scott Boyd
Newsletter Editor: D. Klauber
Newsletter Cont.: Jon Schrag
Phil. Library Rep.: Bob Eygenhuysen
Opp. Drawing: Ray Hacecky
WebMaster: Flash

PSC Representatives:

Fed Rep.: Bill O'Connor
S.D. Philatelic Council: Nick Soroka
Rep (Alt): Art Berg
APS Rep: Trice Klauber

Stamp on Page 1

On the page one header is a The "COVID-19 Solidarity" stamp reflects Swiss Post's commitment to the cohesion of our society. Proceeds will go to Swiss Solidarity and the Swiss Red Cross. It is a way for you to support those in urgent need of help. Swiss Post is issuing a stamp to promote solidarity during the corona virus crisis. The stamp was created at very short notice and designed by Berne-based studio Nulleins Kommunikations design.

Club Meeting Presentations

The following is this year's proposed meeting schedule; all events are proposed and subject to change as necessary to accommodate other events such as Auctions etc.

2020 (Proposed) PSC Meeting Schedule

APR Apr 22, 2020 Cancelled due to Health Crisis

----- All future Meetings are Postponed for Now -----

May	May 13, 2020	Club Donations Voice Sale & Circuit Book Meeting
	May 27, 2020	The 2 nd Annual "Ugly Stamp" Contest. Honors and Prizes!
June	Jun 10, 2019	Club Donations Voice Sale & Circuit Book Meeting
	Jun 24, 2019	Poway Stamp Club Auction
July	Jul 8, 2019	Club Donations Voice Sale & Circuit Book Meeting
	Jul 22, 2019	Bill W --- Holy Stamps
August	Aug 12, 2019	Circuit Book Meeting
	Aug 26, 2019	Bill Kolb --- Penny Black
September	Sep 09, 2019	Circuit Book Meeting
	Sep 23, 2019	David Klauber – TBD
October	Oct 14 2019	Circuit Book Meeting
	Oct 28, 2019	Poway Stamp Club Auction
November	Nov 11, 2019	Circuit Book Meeting
December	--- TBD ---	<i>Holiday Party</i>



**POWAY STAMP
CLUB
APS #1137-112097**

Club meetings are held every
second and fourth
Wednesday of each month
except November &
December at:

Philatelic Library
12675 Danielson Ct #413,
Poway, CA 92064

More info at:
www.powaystampclub.com

Participation

All Stamp Club and Library
members are strongly
encouraged to provide input
for the bi-monthly Club
newsletter. Your knowledge
and expertise should really
be shared. Please submit
items to the Club Secretary
at:

PSCphilately@gmail.com

Club Website

Try our new website at:

PowayStampClub.com

You will find our activities
and affiliations, interesting
links, contact information
including the current and
previous versions of this
Newsletter! Give it a try!
You can use the Web
Presence to introduce
others to our Club.

Club Notes:

1. **Club Membership Dues Are Due!** – Remember that annual dues are payable in January. Keep in good standing with the PSC and help to support your club.
2. **Poway Stamp Club** – Now is a great time to develop a stamp presentation to support our new Program Coordinator who is requesting that all interested club members please advise him of any ideas/projects they may have for meeting programs. You may e-mail Bill Wacenske at: stampdude03@gmail.com or call 805-581-2923.
3. **SWAPEX – The Philatelic Library is closed until further notice and as such SWAPEX is cancelled until further notice.**
4. **SANDIPEX 2020 – Sunday April 5th (Officially Cancelled)**

San Diego Philatelic Expo SANDIPEX Stamp Show
Free Admission! – Free Parking!
Doors Open from 10am – 4pm

5. The show in its 17th year is located just 4 blocks to the north of the Philatelic Library on Poway Road. The show is held at the Benevolent and Protective Order of Elks Lodge #2543, 13219 Poway Road Poway, CA 92064 . The following is a list of the current 2020 SANDIPEX Monthly show dates.

JANUARY 19		JULY 12
FEBRUARY 9	2020	AUGUST 9
MARCH 8	OUR 17TH	SEPTEMBER 20
APRIL 5	YEAR	OCTOBER 11
MAY 3		NOVEMBER 8
JUNE 14		DECEMBER 13

Email: cbcstamp@aol.com &
Sandipex.stampexpo@gmail.com

6. **Future Voice Sales (Tentative)** - The Poway Stamp Club will be holding future full meeting Voice sales on:
June 24th and Oct 28th
7. The Philatelic Library will hold its Auctions on the previous Saturdays: **June 20th and October 17th**
Additionally a “Garage Sale” will be held at the Library on **August 1st**.

8. **Support your Club** – With over **57 members**, the Poway Club is San Diego County's most active Stamp Club. Feel free to forward this Newsletter to anyone you think may find it interesting. You may also support the club by joining the APS. The club will receive a finder's fee for each member who joins the society. Let the stamp community know that we are an alive, vibrant and thriving club!

9. **WANTED** – Members or guests to tell a stamp story. The Poway Stamp Club invites you to share your philatelic passion by giving a presentation at one of our meetings or by writing a short article for our newsletter. If you are interested, or want to find out more, e-mail pscphilately@gmail.com or talk to one of our Club's officers.

10. **Thoughts About Stamp Collecting** - Think about your stamp collection, your manner or approach to collecting, and your collecting goals. Do you have a milestone in your collecting life that you have achieved or pursued? For some it might be having a Penny Black, for others it might be having the Zeppelin airmails. For me it has been acquiring a complete set of the Columbians. Share with us in few short words what your collecting milestone is. You can email your thoughts to me at rmcarthur@cox.net and I will compile them for the newsletter. Stay safe and social distance. **Bob McArthur**

11. **Plate Paper** – A paper used for taking proofs of engraved typo-graphed stamps, usually with a very smooth or glazed surface.

12. **Position Sets** – Sets of blocks from the identifiable positions on the plate such as corners, arrows, center line, plate numbers, etc. In imperforate stamps the crossed centerline and four arrow locks are considered a set,- some collectors add the corner and plate number blocks.

13. **FYI** – **Costco** during the crisis is having special senior hours in Poway.

M-F 10:00am - 8:30pm

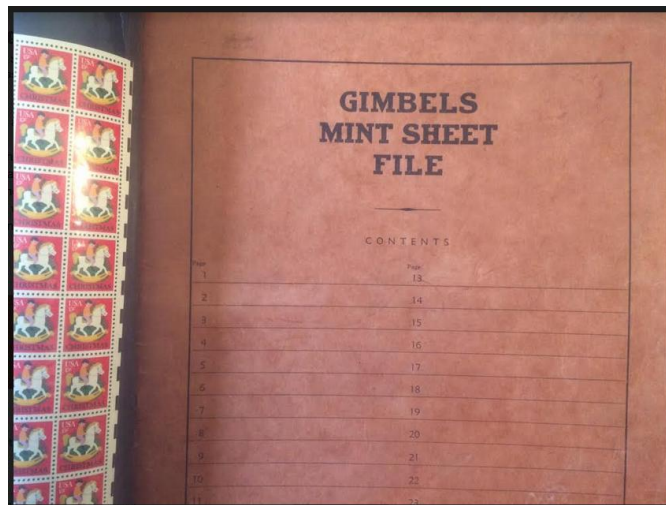
Sat. 9:30am - 6:00pm

Sun. 10:00am - 6:00pm

Senior Hour*: 8 am - 9 am, Tuesdays and Thursdays

14. Rates in 1845 – The 1845 rates (5 and 10). The 5 cent rate for a letter going under 300 miles; the 10 cent for longer distances. It is during this period that PAID 5 and 10 cent Handstamps became in general use. Prepayment became compulsory in April 1855 for the U.S.

15. Show and Tell - came across a show and tell item. At least it was a flashback for me. I remember going to the department store in Pittsburgh and buying stamps among many displays in a department that took maybe 1/3 of an entire floor. That would be about 62 years ago. I remember it being Kaufman's. They were the folks that had Fallingwater built south of Pgh. Though we had a Gimbels, I think this is from the New York Gimbels. Wikipedia says it existed from 1887 to 1987. The numbers on the front refer to the bound glassine sleeves. The sheet on the left refers to how I felt finding it. **Nick Soroka**



Member Spotlight!

By: Jon Schrag



The Poway Stamp Club Newsletter highlights one of its members each issue. Today's spotlight is on **ERIK NILSEN.**

Erik NILSEN is back! He is active in PSC again after a long hiatus. He has requested and maintained his original membership number 209. Welcome back Erik (a former PSC PRESIDENT).

Erik collects USED STAMPS ONLY. This may seem strange for most of our members but is very common for EUROPEAN COLLECTORS. The beauty of used stamps is the lack of concern about gum! YES! There is strong logic in collecting used stamps only. And in many European catalogs USED STAMPS have higher values than mint stamps! Fun!!

Norway, Sweden, Denmark, Iceland, Great Britain, Greenland, and Ireland are all part of Erik's 60 year adventure with stamps. Especially interesting for him are used stamps of NORWAY issued in WWII during German occupation. Ask him about these exceptional stamps.

Erik is comfortable speaking English, Norwegian, Danish and basic German languages...so this makes it easier for him to find the exact stamps that he is pursuing.

Welcome ERIK NILSEN. We are still pleased to have you back!

Definitions

The following definition of EFO and other terms is here in support of the ongoing Editors Corner series on EFO's and Counterfeits.

EFO is the shorthand for "Error, Freak, or Oddity". It's a term applied to philatelic items that were formed unintentionally abnormal.

Errors: Are usually "major" errors having catalog status where something in the process has gone entirely wrong. Examples of "errors" are consistent, unintentional deviations from the normal and typically are stamps that are wrongly perforated, both between or completely imperforated, **FULL** color(s) omitted, inverts, multiple impressions, missing watermarks or tagging and **FULL** stamps on either side of an interpane gutter, etc.

Freaks: Also called "varieties", are generally defined as a lesser degree of production problem. Typically freaks have flaws that are not consistent or do not have catalog status. Examples of freaks include ink smudges, off center perforation shifts, partially missing colors or color shifts, pre-printing paper folds, paper creases, over or under inked stamps, and so forth. Freaks often sell for less than their "error" counterparts. Printing plate cracks, wear and other flaws such as repairs or re-entries are freaks and not typically considered to be errors.

-- Continued on Next Page --

Editors Corner

By D. Klauber

EFOs Part XVIII



Streetcars

Color Omitted Error

In 1983, the United States Postal Service created a series of stamps paying homage to the **Streetcar**, which was first pulled by horses and then propelled by electricity and was America's first major form of mass transportation. The Streetcar stamps are a nostalgic block of four commemoratives that span more than a century, from the early horsecar on tracks to the sole trolley line still operating in America today.

Issue Date: October 8, 1983

City: Kennebunkport, ME

Quantity: 207,725,000

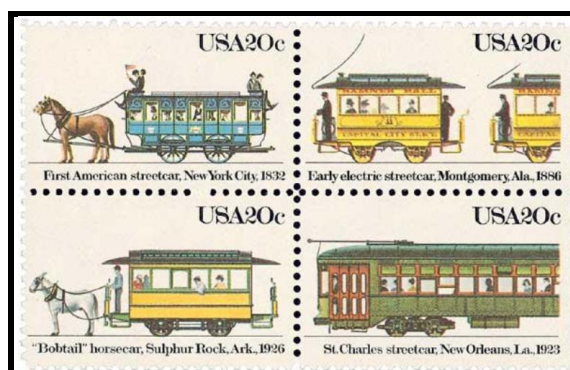
Printed By: Bureau of Engraving and Printing

Printing Method: Photogravure and engraved

Perforations: 11

Color: Multicolored

The four commemoratives trace the evolution of what became a vital form of urban and interurban transportation for the better part of the last century and the early decades of the 20th century. They show the "John Mason," the first American horse-car; the "Bobtail," the last of the nation's horse-cars; trolley cars from Montgomery, Ala., the first place in the nation to have city-wide electric transportation; and a trolley line from New Orleans that is still in operation.¹



New York City Streetcar (Scott 2059); Montgomery Streetcar (Scott 2060); Sulphur Rock Ark. Streetcar "Bobtail" (Scott 2061); St. Charles Streetcar (Scott 2062) From the 20¢ Streetcars issue (Scott 2062a)

Oddities: The catch-all category for anything that is left. Oddities can be subtle problems that do not have catalog status. Examples can be cancel and plate varieties, inverted USPS cancels, very minor perforation shifts, minor color shifts, etc. Most oddities are a curiosity and have lower EFO values.

There continues to be a debate about the definition of freaks vs oddities. This is one area where a classification can be a matter of personal opinion.

Frequently the debate is over pre-printing paper folds and centers on how minor (oddy) or how major (freak) a fold is. As it turns out, one mans freak, is a another mans oddity.

Counterfeit, Forgery, or Fake.

Counterfeit: Fraudulent reproduction of a stamp meant to defraud the issuing authority. (Typically used as postage)

Forgery: Fraudulent reproduction or alteration of a stamp meant to defraud (not the issuing authority), In philately, forged stamps are altered to defraud the buyer.

Fakes An imitation stamp, or reprint. There are many fakes on the market, typically sold as fakes they are rarely sold as genuine. In philately, fakes are an expression of art are not offered as genuine to defraud. (reprints may be considered fakes)

For more information on definitions of and values for many EFOs. See the S.R. Dazt book, "Catalogues of Errors on US Postage Stamps."

The identification of each vehicle runs across the bottom of each stamp in a single line of black type, while the postal data, also in black, fills the upper right corner. The rest of each stamp is filled up with a drawing of the vehicle set against a white background.

The 20-cent stamps were produced in four colors - yellow, magenta, cyan and black - by a combination of both lithographic offset photogravure and intaglio (recessed line engraved) printing methods. The surface-printed lithographic elements (streetcars) colors were applied first, followed by the engraved elements the (USA and text, and 20c denomination) in black. The following photograph shows the four-digit plate number per post office pane of 50 stamps. One additional black number represents the **intaglio color black**, while the other four digits represent the offset colors.



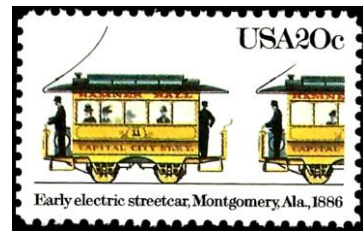
U.S. Scott #2060c 1983, 4 color Plate # and single digit Intaglio #.

The Errors

This true stamp "Error" was a recent acquisition that I found at the last pre-Covid SANDIPEX stamp show. The stamp is both dramatic and rare in U.S. Postal history. The stamp is classified as a true "Error" because it is missing black intaglio ink completely as cataloged in Scott.



U.S. Scott #2060c 1983 .20 Color Omitted Error Single
(Courtesy D. Klauber)

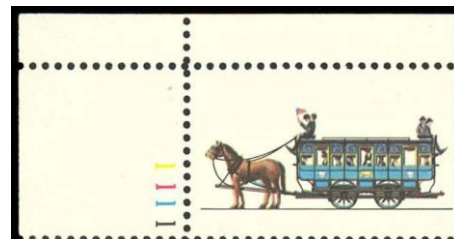


*U.S. Scott #2060c 1983 20c
Color Omitted Error Single comparison
(Courtesy D. Klauber)*

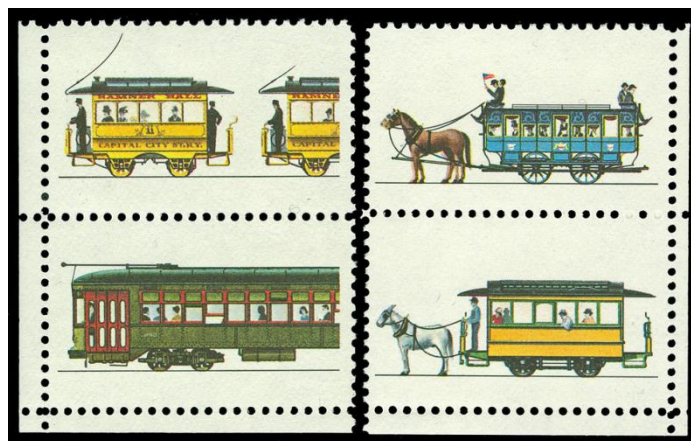
#2062a – Know Color Errors (to date)

In spite of the valiant work of the Bureau of Engraving and Printing (BEP), there were several errors that eventually made their way into the hands of stamp collectors. The known variations consist of 4 color omitted and several shift errors. **Scott Items Listed in RED**

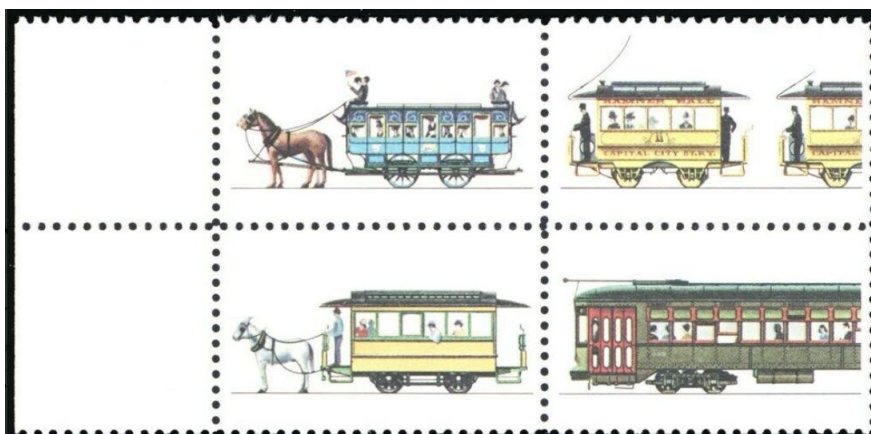
- **2059-62b** 1 Color Omitted Single \$80
- **2060a-61a**, 2 Color Omit Match Pairs \$250.00 as a se-tenant block of four
- **2062b** 1 Color Omitted Black Intaglio Errors Block of four \$250.00
- **2059-62**, 1 Color Black shifted lower, \$100/Block
- **2062b** 1 Color Omitted Black Sheet/50, \$3,250.00



2059b 1 Color Omitted Single \$80.00



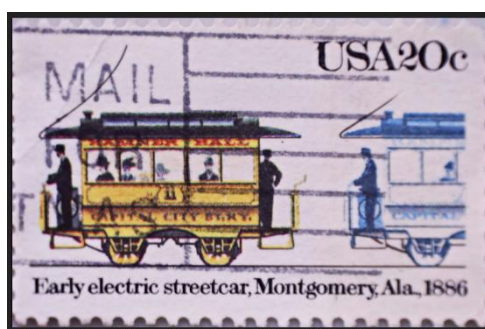
**U.S. #20560a/61a Matching Error Pairs
20¢ Street Cars \$250.00**



**U.S. #2062b Matching Omitted Black Intaglio
20¢ Street Cars \$250.00**



**U.S. #2059-62 Shifted Variety, *black shifted lower*
20¢ Street Cars \$100.00**



**U.S. #2060 Partial Color Shift/Faded?
20c Street Cars (Value Unknown)
(Courtesy D. Klauber)**

It is not known yet if the stamp above is a shift, partial color omit or a faded changeling. This stamp was found by Mr. Duane Pryhoda. The value of this stamp is unknown because it has not yet been identified by Scott. Thanks Duane!

Do you have Items of interest or photos of PSC philatelic interest to share?

If yes, you can submit them to the editor of the PSC Newsletter for inclusion in our newest Newsletter Club Wanderings page.

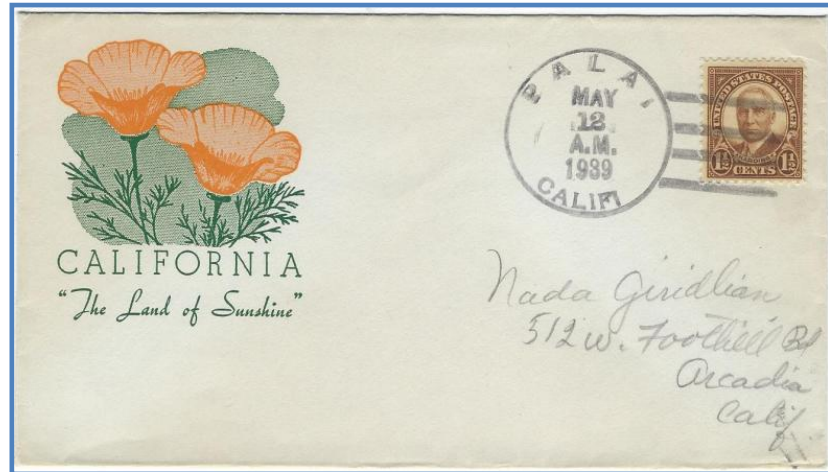
Again, EFO's make an exciting and educational addition to any stamp collection for they speak to us about how stamps are produced and how mistakes can be made during the production of stamps.

1. *New York Times*, September 25, 1983, Section 2, Page 35
2. *\$1 Americana offers errors, interesting postal history: Charles Snee*, Apr 5, 2016, 6 AM <https://www.linns.com/news/us-stamps-postal-history/2016/april/us-americana-stamp-errors-postal-history.html>
3. *[Klauber], Photographs taken using a Celestron MP Handheld Digital Microscope Pro*

Local Interest

By Bill O'Connor

Old Postmarks of San Diego County; Pala



Pala Cover, Image Courtesy Bill O'Connor

We do not see the postmarks of the many communities of San Diego very often today. According to the Postal Locations of San Diego, there are 116 post offices in the county. These post offices range from Alpine to Warner Springs. This new series will show one of the cancelled envelopes from one of these communities in the county. As you know most mail today goes through a central sorting complex, so an individual local cancel is seldom encountered.

Pala is the native name for water. This community was well established prior to the establishment of the San Luis Rey Mission in 1769. In 1903, many native peoples were forced to leave Warner Springs and settle in Pala. The San Antonio de Pala Mission, or more correctly an asistencia, or sub mission of San Luis Rey, was founded in 1816. The mission in Pala is the only one that is still actively serving the native population for which it was originally founded.

Pala today is located on Highway 76, east of Fallbrook/Bonsall. A very large commercial casino is in full operation. A short trip further east to Palomar mountain makes for a day trip to see the area as well as the world renowned Palomar Observatory.

(If anyone seeing this newsletter has some interesting post marks of communities of San Diego, please send me a copy)

Thanks, Bill O'Connor

Soapbox

By **The Anonymous Quiz Maestro (New)**

THE GREAT STAMP CHALLENGE

The last Newsletter Quiz answers are below.

Ladies and Gentlemen of the most distinguished Poway Stamp Club- An announcement!

The Anonymous Quiz Maestro, that magis mirabilis of trivia, provides herein for your entertainment and enlightenment a selection of questions concerning philatelic firsts and superlatives gathered from the four corners of the globe. Some are easy, some are hard, and some are tricky. Lest you plead ignorance or sloth, to give stick to your enthusiasm, **the Anonymous Quiz Maestro promises to deliver not one, not two, but three philatelic prizes from his cabinet of curiosities with a grand prize worth not less than twenty-five United States dollars.** So, turn off your talking lamp for an hour or two and delve into the world of philatelic history. All submissions will be held in confidence, so have no fear of embarrassing your peers with the brilliance of your knowledge. Only the winners will be announced.

1. The first postage stamp to depict a living person.
2. The first postage stamp in which the denomination was the major element of the design.
3. The first postage stamp to depict a woman.
4. The longest postage stamp.
5. The first definitive postage stamp.
6. The first postage stamp to depict a nude or semi-nude person.
7. The first stamp to depict a head of state.
8. The first postage stamp to depict someone other than a head of state.
9. The first pictorial postage stamp.
10. The largest pictorial stamp issue.
11. The first commemorative postage stamp.
12. This country's head of state always appears on its postage stamps.
13. This country's postage stamps have never depicted either the head of government or any other political leader (there may be more than one answer)
14. The first postage stamp to depict a native American.
15. The first postage stamp to depict a mythological figure.

You may answer with the Scott catalog number or a description of the stamp with its year of issue or both.

Distribution of prizes may be delayed because of the Corona virus pandemic.

I et labora.

Answers for April 8 quiz

1. - A, B, C) The year, 1947 was printed instead of 1957. The appropriate answer is Ship Building (B), so, all answers will be counted as correct. (#1095)
2. - A) Because it was more efficient to transport mail by air rather than rail, as it had been since 1832, domestic air service was ended on May 1, 1977 and all first-class mail was sent by air at first class rates.
3. - C) Old Faithful (the star of Metamucil ads) is in Yellowstone. The stamp is #1453 and it shows the famous geyser in full spout. And, you may see it again on another "National Parks" issue of 1934.
4. - B) Scott #569 has a very nice picture of the American buffalo which was saved from extinction thanks to the efforts of William Temple Hornaday, an American zoologist,
5. - A) Zachary Taylor, our twelfth president (known as "Old Rough and Ready") was a hero of the Mexican war. He died with less than a year in office. #817.
6. - A) A sprinter is pictured on UX80, a 10-cent postal card. The only one issued to commemorate the Olympics.
7. - C) C14 sold for \$1.30. it was issued for mail on the Graf Zeppelin during its first Europe-Pan-American round-trip flight. They were sold in post offices for less than two and a half months (April 19, 1930 to June 30, 1930).
8. A) Ralph Waldo Emerson's portrait is on #861 the three-cent bright magenta. He was a writer of prose (Self-Reliance) and poetry (Snow-storm) and he embraced transcendentalism.
9. - A) # 1608 shows the Iron Betty from the Plymouth Colony which was settled by pilgrims from the Mayflower.
10. - A) #E12 shows a messenger delivering a package to the lady of the house while his motorcycle is parked on the street.

San Diego Philatelic Library

The San Diego Philatelic Library is Currently Closed due to the Pandemic.

The San Diego County Philatelic Library is a not-for-profit philatelic library in Poway, San Diego County, California. Operated by friendly volunteers. Your stamp library consists of approximately 16,000 volumes of books, monographs, catalogs, and periodicals.

Library Loose Stamps

The Philatelic library provides a large bucket of assorted stamps for visitor inspection. Please remember to always leave a suitable contribution for any stamp items removed from the bucket.

Library Hours:

The Library hours vary based upon who can take a shift, the hours usually are:

10 to 2:00	Monday
12 to 5:30	Tuesday
12 to 3:00	Wednesday
10 to 2:00	Thursday
12 to 6:00	Friday
1 to 5:00	Saturday

Plus additional hours by appointment only.



Member Classifieds

If you would like to have a **Free** advertisement in the PSC Newsletter, please email: PSCphilately@gmail.com

For Sale: Want lists serviced for stamps of Puerto Rico. Fill holes in your collection with mostly lower catalog value stamps. See Bob at a PSC meeting or call 858-278-7873

Bob Schappelle

For Sale: Worldwide sets, Singles and Souvenir sheets. 60% off Catalog to all Club Members. Offer valid anywhere you see me. Phone: 714-476-3698 Email: CBCSTAMP@AOL.com.

Chuck Bigler.

For Sale: \$525. Cat of worldwide souvenir sheets, some high Cat machins. \$100. Call **Duane** at 858-735-3800

Duane Pryhoda

For Sale: Stamps at Bargain Prices, Come and see my Stock. By appointment so please call to set up a time. Home Phone: 858-271-0262 Mobile Phone: 858-449-3047 **Al Kish**

Wanted: Topicals on the following subjects: spiders, trilobites, Shih Tzu dogs, lunar new year [year of, etc.], paintings by Manet, Delacroix, Gericault, David, Brueghel. U.S. 1893 Columbian issue errors, freaks and oddities. Top dollar paid for Columbian plate varieties especially double transfers. **For Sale:** large selection of used and mint Australia, Great Britain, and Japan including single stamps and souvenir sheets at a fraction of catalog value. Email your want list to Bob McArthur (rmcarthur@cox.net) or bring to a PSC meeting." **Bob McArthur**

Wanted: Puerto Rico Town cancels. Bring to meeting. Will trade or buy. See member **M. Marti** PSC # 410.

Wanted: Imperial China, PRC, Manchukuo, Mongolia, U.S. Double Transfers/Re-entries, U.S. 19th Century Proofs and Essays. U.S. 19th Century. See D & T Klauber at Wednesday PSC meeting or contact us at Indysmama@gmail.com.

Supplies:



Thanks to Chris Diaz at Stamp Paraphernalia for updating their PSC site information on the net.

Check out their online store for all your Philatelic supply needs.

Subscription Services: Bill Wacenske a Member of the PSC recommends Scott A. Shaulis for the purposes of purchasing Quality US stamps. Scott Shaulis provides a US New Issue Subscription Service for your consideration www.shaulisstamps.com or contact Scott a scott@shaulisstamps.com.



Stamp News:



New Stamps 2020 United States Postal Service Stamps

The following Issue dates, stamp subjects and formats are tentative and subject to change. They are based on Linn's listing of projected 2020 releases.



***April 2, Contemporary Boutonniere.** One (55¢) forever special stamp, pane of 20; AP; Crestwood, KY 40014; *Linn's*, March 30, page 1; USPS item No. 572304 (pane); **572316 (FDC at 99¢); 572321 (color postmark FDC at \$1.70).**



***April 2, Garden Corsage.** One (70¢) 2-ounce rate special stamp, pane of 20; AP; Crestwood, KY 40014; *Linn's*, March 30, page 1; USPS item No. 585904 (pane); 585916 (FDC at \$1.14); 585921 (color postmark FDC at \$1.85).



***April 18, Earth Day.** One (55¢) forever definitive stamp, double-sided pane of 20; BCA; Denver, CO 80202; USPS item No. 682604 (pane); 682616 (FDC at 99¢); 682621 (color postmark FDC at \$1.70).



***April 24, Chrysanthemum.** One (\$1.20) global forever definitive stamp, *pane of 10*; *AP*; Burlingame, CA **94010**; *Linn's*, Jan. 20, page 10; *USPS item No. 572604 (pane)*, *572616 (FDC at \$1.64)*; *572621 (color postmark FDC at \$2.35)*.

New Stamp - Stamp images provided by the United States Postal Service.
Copyright © 2019 USPS. All Rights Reserved.