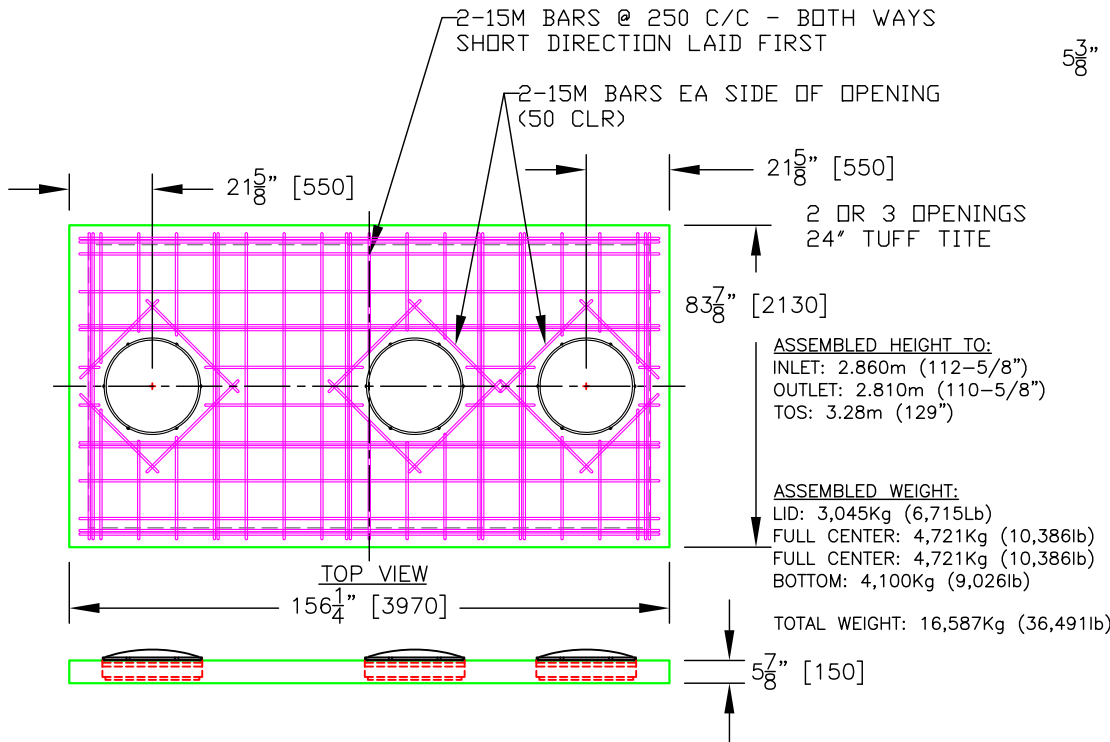
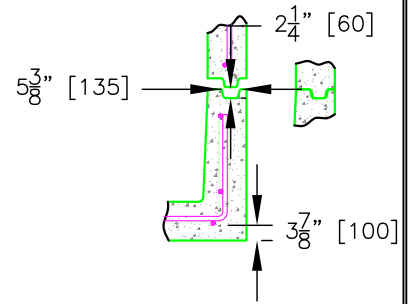


TYPICAL JOINT DETAIL



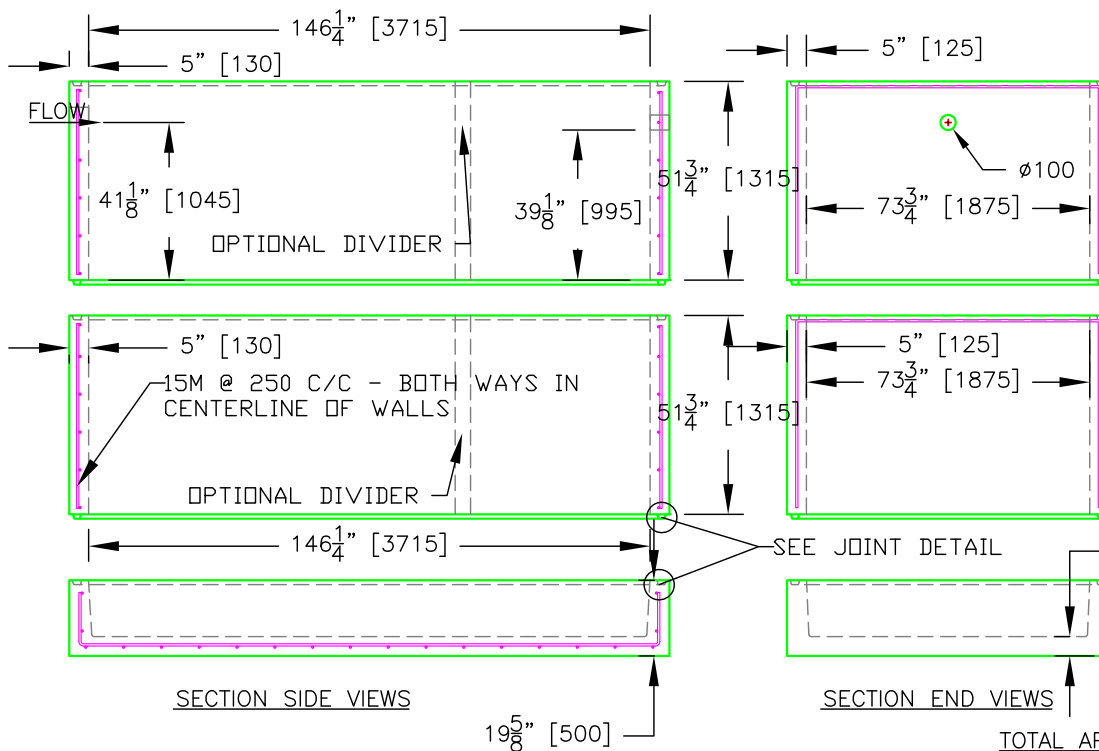
GENERAL NOTES

Precast concrete shall be exposure Class S and meet min compressive strength of 35MPa

Cement: Type GU
Air Category: 4.0% - 7.0%
Aggregate: CSA/CAN A23.4 Maximum Size: 20mm
Admixtures: CSA/CAN A23.4
Reinforcing: Grade 400W CSA G30.18-09
Inserts/Embeds: As noted in drawing details

Manufacture of precast concrete units shall be in accordance with specification CSA A23.4

**** LEKO PRECAST LTD SHALL NOT BE RESPONSIBLE FOR ANY INSTALLATION PRACTICES FOLLOWED ON-SITE UNLESS PERFORMED BY LEKO PRECAST LTD ****



TOTAL VOLUME OF MIDDLE
6910 LITRES -OR-
1830 U.S. GALLONS

TOTAL VOLUME OF MIDDLE
9150 LITRES -OR-
2420 U.S. GALLONS

TOTAL VOLUME OF BOTTOM
2590 LITRES -OR-
685 U.S. GALLONS

TOTAL APROX COMBINED VOLUME:
APPROX. 18,650 LITRES
OR 4935 U.S. GALLONS (4145 iGAL)



5000 US GAL TANK SINGLE COMPARTMENT

DRAWN BY: JA	CHECKED BY:	APPROVED BY:	DATE: August 2016
ASSEMBLY DWG.	PREVIOUS DWG.	DRAWING NO. S0207E	REVISION 3
SCALE: 1:50 ISOMETRIC: N/A			
DO NOT SCALE THIS DRAWING			