



Product use

PHIL-CAST™ is a product used to compress, fix and support a part of your body suffering from fractures and other orthopedic diseases. It serves the purposes of impact prevention, protection on the treated area, pain alleviation, and treatments.

Product overview

PHIL-CAST™ orthopedic fixing tape is made of glass fiber or polyester fabrics and water hardening resins. If exposed to the air, it is combined with the moisture in the air to start hardening.

Thus, the catalyst for PHIL-CAST™ is 'water'. Three to five minutes after soaked in the water, hardening starts. Within 20 minutes, it gets hard enough to support the weight. If the warm water is used, the hardening time can get reduced. If the cold water is used, it gets longer.

The original fabric for PHIL-CAST™ is made by our own technologies. Compared to other products, it provides 30% higher flexibility and elasticity which is easy to use.

PHIL-CAST™ uses the exclusive manufacturing formula of MIKA MEDICAL providing excellent softness. After surgery, great forming can be done.



PHIL-CAST™ can securely fix the exterior and supports good air ventilation that discharges the moisture very fast. It is light weighted and has excellent strength.

PHIL-CAST™ can be used for orthopedic gyps, support gyps, weight supporting gyps and substitutive gyps and so on.

Product features and specs

PHIL-CAST™ (glass fiber) has the following characteristics.

- ⓐ Lighter than polyester products and 20% better strength.
- ⓑ Excellent X-ray penetration.
- ⓒ MIKA fabric with excellent flexibility and elasticity. Good molding and forming ability.
- ⓓ Reliability, water proofing and air ventilation.
- ⓔ A cast top is used to remove it easily.

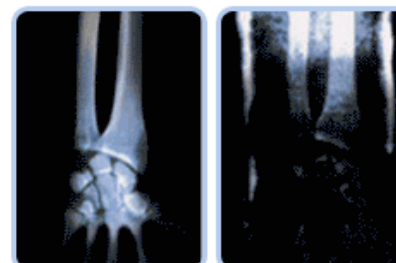
• Strength

The PHIL-CAST™ glass fiber product has 20 times as high strength as the existing plaster bandages and supports 20% higher strength than the polyester products.

The weight is only 1/5 of the plaster bandage and the thickness is only 1/3.

• X-Ray penetration

The PHIL-CAST™ glass fiber product has excellent X-Ray penetration ability which facilitates a diagnosis of the patient and examination of the recovery condition. Especially, the high clarity without any residual images allows you to clearly observe the fine fractures as well.



PHIL-CAST

Plaster bandage

• Forming and molding ability

The PHIL-CAST™ glass fiber product is a tape developed by the exclusive technology of MIKA and it has excellent flexibility and elasticity. (30% higher elasticity than the polyester products)

As a result, it supports excellent forming ability that can facilitate treatments on a curved area of your body such as ankles and elbows.

• Reliability, water proofing and air ventilation

The PHIL-CAST™ glass fiber product has excellent strength and it is highly resistant against external impacts. Its edge can be maintained safely from the external impacts. In addition, small holes on the fabric can support excellent air ventilation and prevents skin diseases such as itchy, internal moisture, and bad odors.

• Removal

The PHIL-CAST™ glass fiber product is used as a cast cutter to cut it more easily than other products. Quick removal can be achieved.

• Variety of colors



• Product specifications

ORDER NO.	SIZE	SPEC	PARKING	C/T PARKING
MK-3702	2'X4DYS	5.0cm X 360cm	10 rolls / an inbox	150 rolls/CT
MK-3703	3'X4DYS	7.5cm X 360cm	10 rolls / an inbox	150 rolls/CT
MK-3704	4'X4DYS	10.0cm X 360cm	10 rolls / an inbox	120 rolls/CT
MK-3705	5'X4DYS	12.5cm X 360cm	10 rolls / an inbox	100 rolls/CT

• Cautions

- 1) If there is a hole in the aluminum packing, then the moisture in the air can cause it to harden slowly. Do not

allow a sharp object to cut the packing or punch a fine hole in the packing pouch.

- 2) The normal storage temperature is 15°C~30°C. If exposed to the direct sunlight too long, the storage reliability can be deteriorated.
- 3) If used after long hours of storage in the low temperature, then please wait for one hour in the room temperature before use.

[Wear Video](#)