

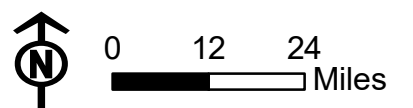
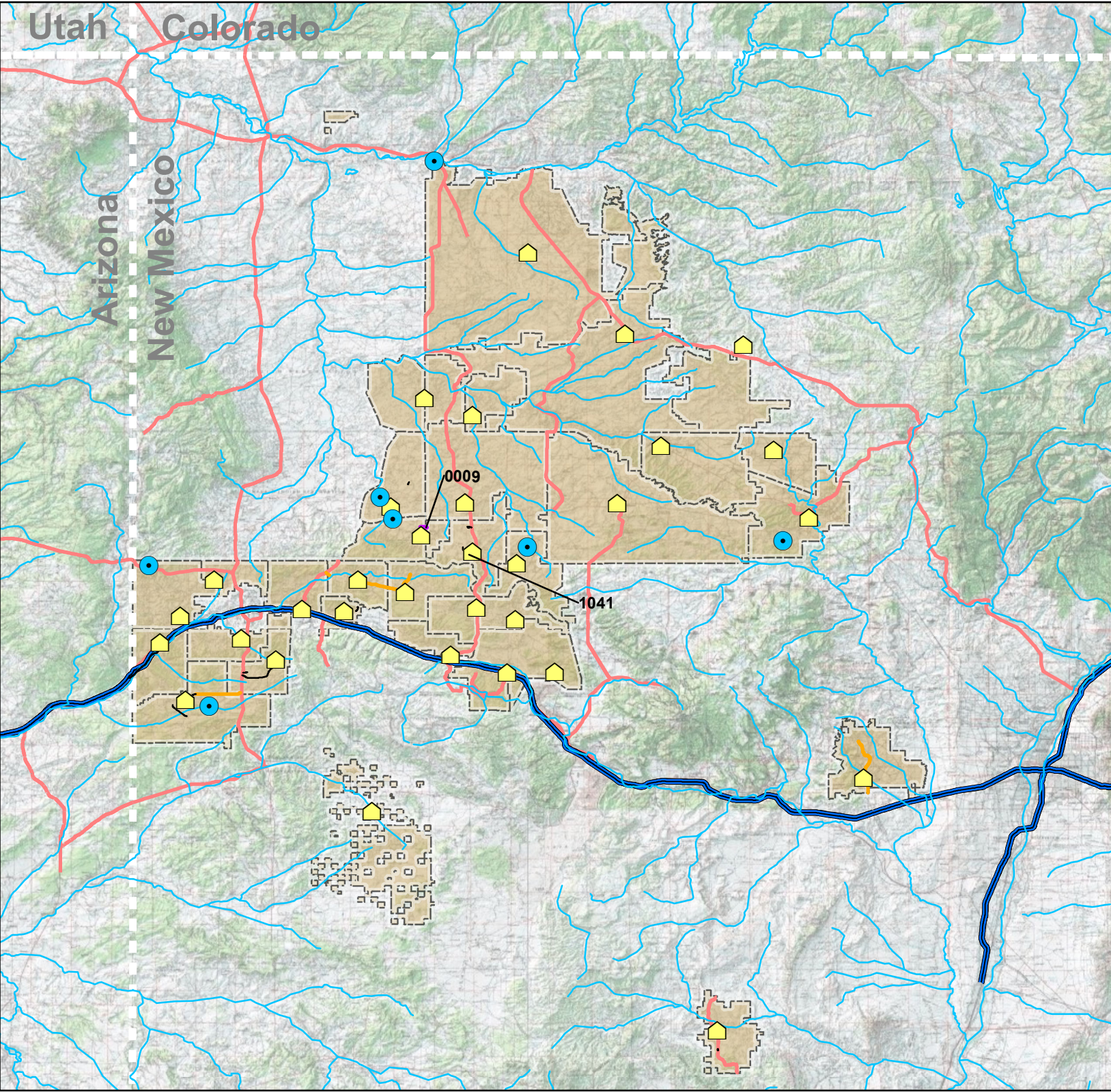
Utah Colorado

Arizona New Mexico

# Crownpoint Agency Paved Route Priority Needs

- Washout
- Chapter House
- River/Stream
- US/State Highway
- Interstate
- Crownpoint Agency
- Chapter Boundary

- ADT (PCI 0-54)**
- <1000 (39.6 miles)
  - 1000-2999 (30.0 miles)
  - 3000-6000 (1.3 miles)
  - >6000 (0 miles)



Source: 2021 Official Inventory and NDOT GIS

