

# FSA & RMA

November 16, 2022

Marcia Bunger

Administrator  
Risk Management Agency  
U.S. Department of Agriculture



June 2022: Dairy Farm in River Falls, WI



- Introduction
- FSA Highlights
- 2022 RMA Program Updates
- The Year Ahead
- Q & A

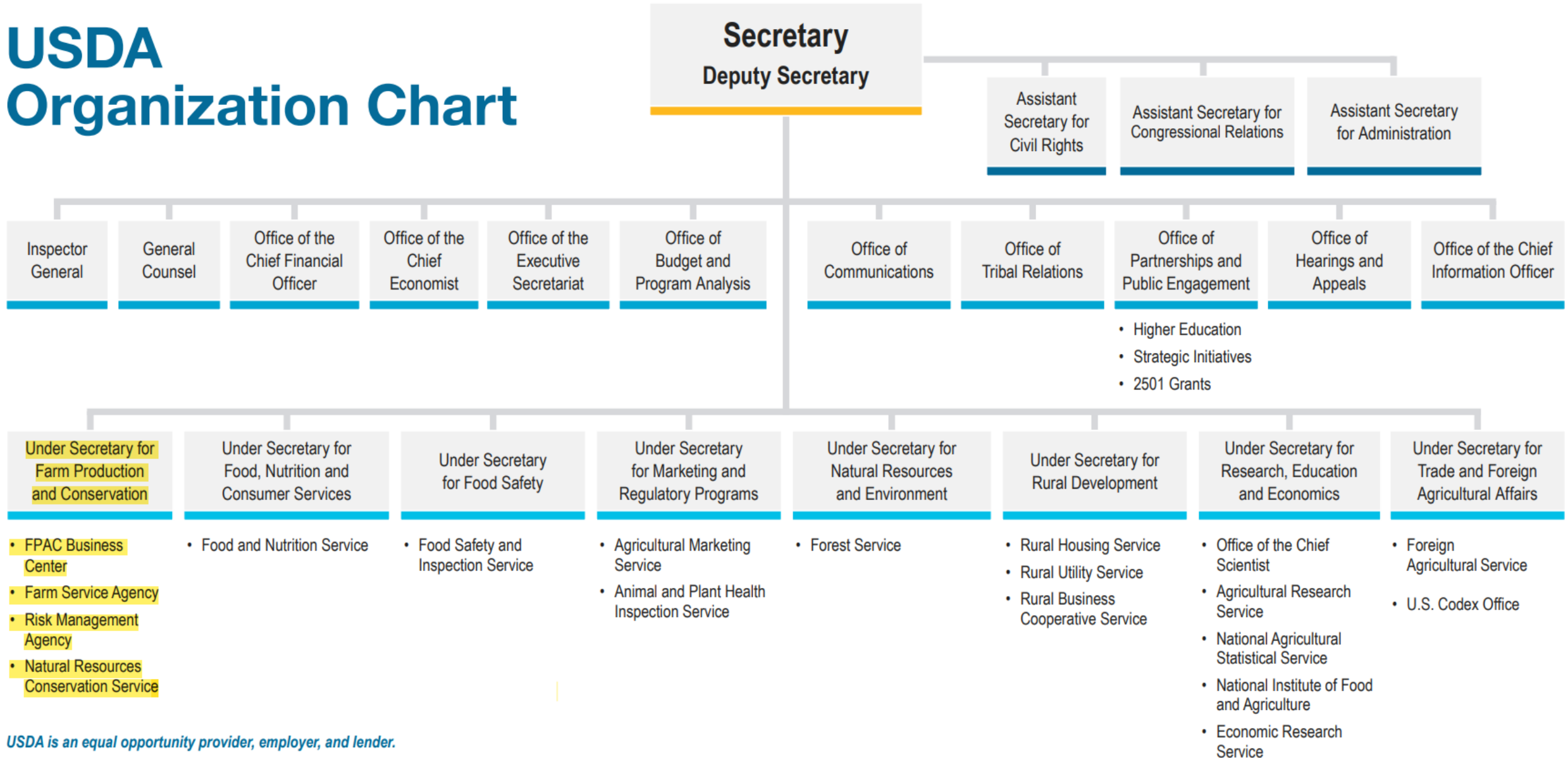
June 2022: Dairy Farm in River Falls, WI



July 2022: Lyman Orchard in South Central Connecticut



## USDA Organization Chart





- Emergency Relief Program
- Partnerships for Climate Smart Commodities
- Heirs' Property
- Organic Cost Share Certification Program
- Increasing Land, Capital and Market Access Program
- Loan Assistance Tool

September 2022: Secretary Vilsack in Western Wisconsin, Partnerships for Climate Smart Commodities Rollout

## Drought

FPAC has launched a farmers.gov page designed specifically for drought.

[Farmers.gov/protection-recovery/drought](https://farmers.gov/protection-recovery/drought)

- USDA uses the U.S. Drought Monitor to determine Secretarial Disaster Designations for drought, which triggers eligibility for some programs, such as the Livestock Forage Disaster Program, Emergency Haying and Grazing on CRP acres and Emergency Loan Program.
- On farmers.gov, the [Disaster Assistance Discovery Tool](#), [Disaster-at-a-Glance fact sheet](#), and [Farm Loan Discovery Tool](#) can help producers and landowners determine program or loan options.

## [FSA Disaster Assistance Programs for Drought](#)

- [Livestock Forage Disaster Program \(LFP\)](#) provides compensation to eligible livestock producers who have suffered grazing losses due to drought on land that is native or improved pastureland with permanent vegetative cover or that is planted specifically for grazing. LFP benefits may be available for loss of grazing acres due to wildfires on federally managed lands on which a producer is prohibited, by a federal agency, from grazing normally permitted livestock. FSA maintains a list of [counties eligible for LFP](#) and makes updates each Thursday.
  - FSA is now accepting applications for the [Livestock Forage Disaster Program \(LFP\)](#) to provide financial assistance to eligible producers for 2022 grazing losses due to a qualifying drought or fire. The deadline to apply for 2022 LFP assistance is Jan. 30, 2023.

- [Conservation Reserve Program \(CRP\) Haying and Grazing](#) provides for emergency haying and grazing on certain CRP practices in a county designated as D2 or higher on the [U.S. Drought Monitor](#), or in a county where there is at least 40 percent loss in forage production. Producers should check with their local USDA Service Center to discuss available assistance before initiating haying or grazing on CRP acres.
- [Noninsured Crop Disaster Assistance Program \(NAP\)](#) provides financial assistance to producers of non-insurable crops to protect against natural disasters that result in lower yields, crop losses, or prevents crop planting. Producers must have obtained NAP coverage for the crop year in which the loss occurs.





## Grassland CRP Accepted Acres, Signup 2022

- This year's Grassland CRP signup – the highest ever – demonstrates the continued success and value of investments in voluntary, producer-led, working lands conservation programs.
- Grassland CRP clearly demonstrates that conservation priorities and agricultural productivity not only have the capacity to coexist, but also complement and enhance one another.
- Through the USDA's working land conservation programs, farmers and ranchers play a critical role in helping secure the future of both our food production and our natural resources.

- Streamlined program to deliver expedited emergency disaster relief payments
  - RMA worked with FSA to identify and provide data that could be used to streamline the process and reduce potential for errors
  
- Phase 1: FSA mailed pre-filled ERP applications in late May and has since paid producers with eligible losses more than \$6.5 billion
  
- 88% less time to process applications and a reduction of more than one million staff hours for implementation of ERP compared with WHIP+
  - 90 minutes to process an ERP application vs 8 hours for WHIP/WHIP+
  
- Additional Updates to Address:
  - 2021 policies with supplemental coverage
  - 2020 spring crop prevented planting issues
  - Adding nursery and other “new” records that did not exist in May

## Phase Two for Crop and Livestock Producers

- The second phase of both crop programs (ERP) and livestock (ELRP) will fill gaps and cover producers who did not participate in or receive payments through the existing programs that are being leveraged for phase 1 implementation.
- Through proactive communication and outreach, USDA will keep producers and stakeholders informed as program details are available.
- USDA is working diligently to develop the programs, policies and provisions required to equitably distribute these much-needed payments to producers hard-hit by catastrophic natural disaster events in 2020 and 2021.
- Once Phase 1 payment processing is complete, the remaining funds will be used to cover gaps identified under Phase 2.



- Emergency Relief Program
- TOGA
- PACE
- PCCP
- Double Cropping
- Whole Farm Expansion
- Micro Farm
- Risk Management Education

August 2022: University of Arkansas, Pine Bluff

## Part of the new USDA Organic Transition Initiative

### Provides producer support through crop insurance premium assistance

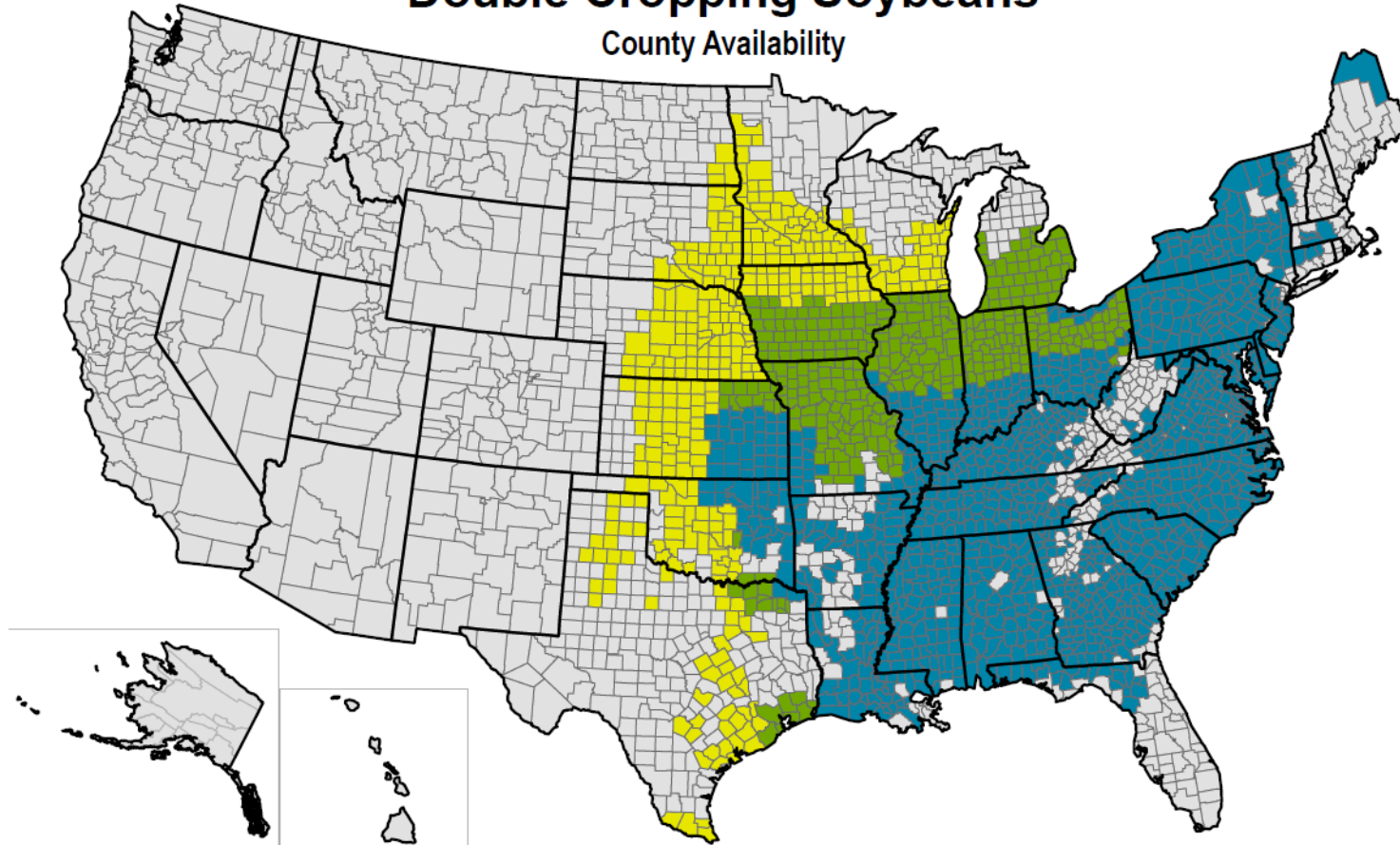
- 2023 Reinsurance Year (includes sales closing dates from 7/1/22 – 6/30/23):
  - 10% points premium subsidy for all crops in transition
  - \$5 per acre premium benefit for certified organic grain and feed crops
  - 10% points premium subsidy for all WFRP policies covering crops in transition to organic or certified organic - producers who have additional individual crop insurance policies will also receive the applicable premium assistance on those policies
- No Action needed by the Producer

# Double Cropping Expansion

- Following Another Crop (FAC) – Commonly referred to as double cropping, allows farmers to plant and insure a second crop on the same land in the same year
- Expansion of insurance availability for double cropping soybeans announced by President Biden on May 11, 2022, during Illinois farm visit
  - Soybeans: double cropping expanded or streamlined in at least 681 counties
  - Grain Sorghum: double cropping expanded or streamlined in at least 870 counties
  - Some counties permanently added, but majority of expansion removed barriers such as requiring production records and made it easier to get written agreements
  - Regional Offices are finalizing changes for the 2023 Crop Year
- Why?
  - To support U.S. farmers in their work to stabilize food prices and feed Americans and the world amidst continuing challenges of the COVID-19 pandemic, supply chain disruptions, and the invasion of Ukraine by Russia.

# Double Cropping Expansion

## Double Cropping Soybeans County Availability



**Option**    No Coverage    Coverage Available    WA option available    WA with no history

Soybeans - Double Cropping Expansion Opportunity Public Map



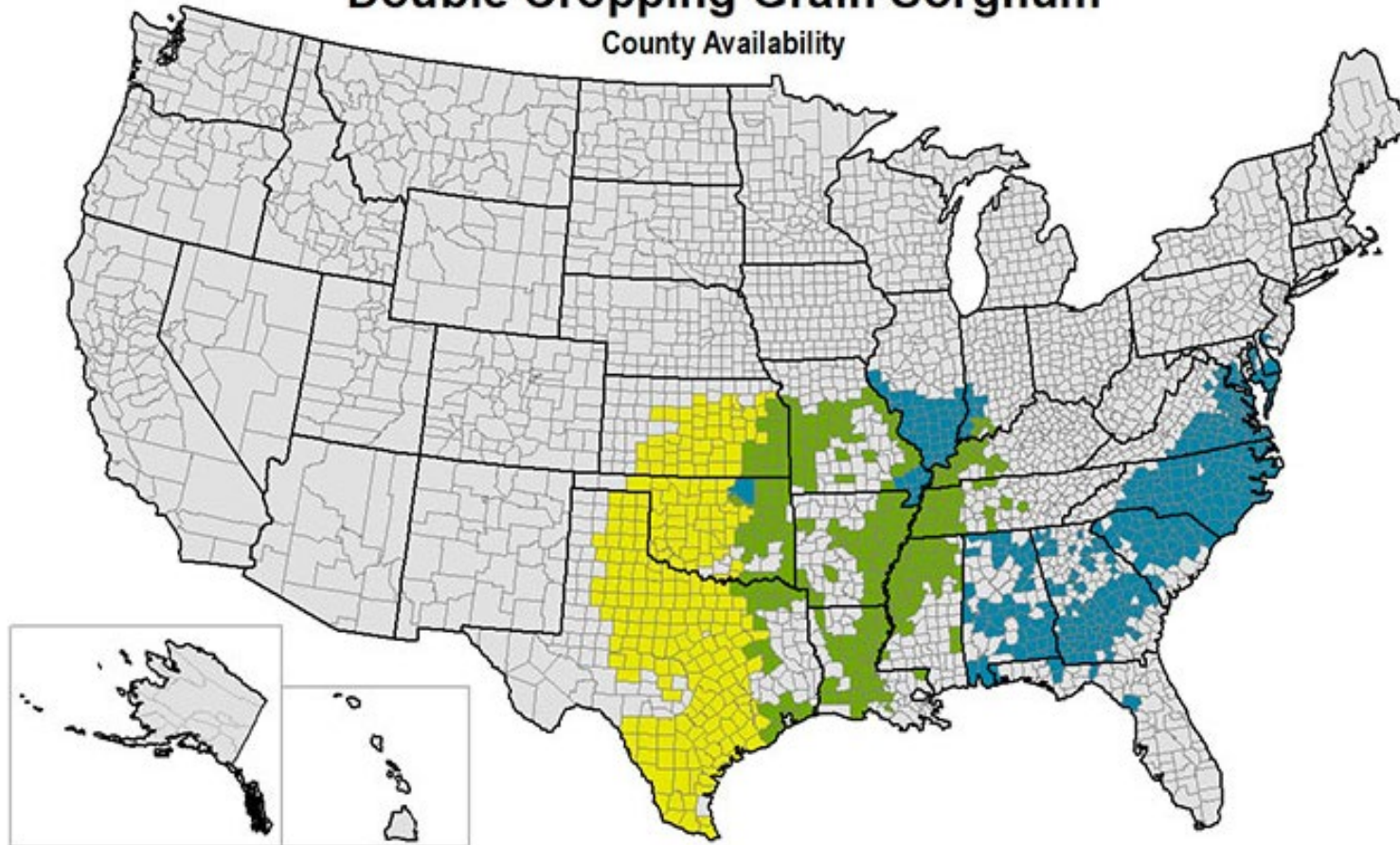
The information displayed in this map is intended to serve as an aid in displaying data provided or stored by the Risk Management Agency. It does not modify, replace or supersede any USDA published policy provisions or procedures. Maps created by USDA Risk Management Agency are for spatial and visual context for depicting the basic information for "where". Maps are not considered a survey. General Reference Only

Map Creation Date: July 08, 2022  
Layer Credits: USDA  
Source: USDA Risk Management Agency - System of Analytics  
Data Current Date: July 8, 2022  
Map Projection: USA Contiguous Albers Equal Area Conic

**RMA Insurance Services**

# Double Cropping Expansion

## Double Cropping Grain Sorghum County Availability



**Option**     No Coverage     Coverage Available     WA Option Available     WA with no history

Grain Sorghum - Double Cropping Expansion Opportunity Public Map

Map Creation Date: July 08, 2022  
 Layer Credits: USDA  
 Source: USDA Risk Management Agency - System of Analytics  
 Data Current Date: July 8, 2022  
 Map Projection: USA Contiguous Albers Equal Area Conic  
**RMA Insurance Services**

The information displayed in this map is intended to serve as an aid in displaying data provided or stored by the Risk Management Agency. It does not modify, replace or supersede any USDA published policy provisions or procedures. Maps created by USDA Risk Management Agency are for spatial and visual context for depicting the basic information for "where". Maps are not considered a survey. General Reference Only





- PACE
  - Expansion in IA, IL, WI, & MN for 2023

State	IA	IL	KS	MI	MN	ND	NE	SD	WI
Policies Sold	10	20	3	2	11	2	2	7	8

- PCCP
  - 12.2M acres paid in 2021
  - Easy to administer, built off State programs
  - 2022 program had enhancements – ~10M net acres expected
    - Fall crops
    - WFRP
    - State match

## November 1st Hay/Graze Date

- Can now follow PP with cover crop options
  - Haying, grazing, cutting for silage, haylage, or baleage
  - Corn is not a cover crop

- RMA awarding \$2.2 million to 16 organizations to educate:
  - Historically underserved producers
  - Small-scale farmers
  - Others on farm risk management and climate-smart farm practices
  - <https://www.rma.usda.gov/News-Room/Press/Press-Releases/2022-News/USDA-Invests-2-2-Million-in-RME-for-Farmers-Including-Historically-Underserved-and-Small-scale>
  
- Builds on a nearly \$1 million investment in 2021
  
- RMA also awarded \$1.3M for a Navigator Program with the University of the Arkansas that will help underserved communities access risk management tools

- LRP

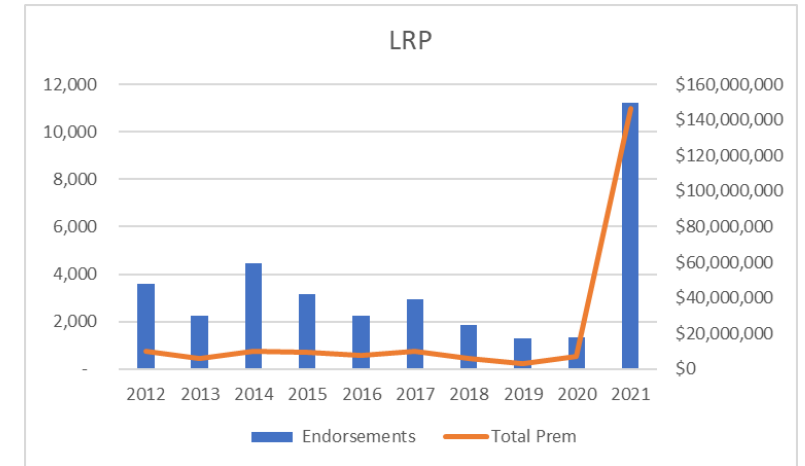
- Increased subsidy and change in payment date had large effect on sales

- LGM

- Increased subsidy and change in payment date had moderate effect on sales

- DRP

- Added flexibility to continue coverage when producers experience a disaster at their dairy operation.





- Increase insurance limits:
  - WFRP - from \$8.5 million to \$17 million
  - Micro Farm - from \$100,000 to \$350,000
- Reduce Paperwork:
  - Replace expense reporting procedures with a 40% reduction in expected revenue for commodities which cannot be planted due to insurable causes (similar to prevented planting)
  - Adjust yield reporting requirements at the sales closing date to streamline record keeping



- Double Cropping Expansion
- Whole Farm / Micro Farm Road Show
- Improved Outreach to Organic and Underserved Producers
- 2023 RME Partnerships
- Building Resiliency Program
- Remote Work
- DEIA Initiatives



## Prospective Customer Survey

- On November 9, 2022, USDA released a nationwide survey to help the Department improve and increase access to its programs and services for America's farmers, ranchers, and forest managers.
- The survey gathers feedback on programs and services available through the Farm Service Agency (FSA), Natural Resources Conservation Service (NRCS) and Risk Management Agency (RMA).
- All agricultural producers are encouraged to take the survey, especially those who have not worked with USDA previously.
- The survey is available online at [farmers.gov/survey](https://farmers.gov/survey), and producers should complete by March 31, 2023.



September 2022: Hmong American Farmers Association Cooperative Farm in St. Paul, MN

**Thank you!**  
**Q & A**



August 2022: Organic Valley Dairy Farm near La Farge, WI