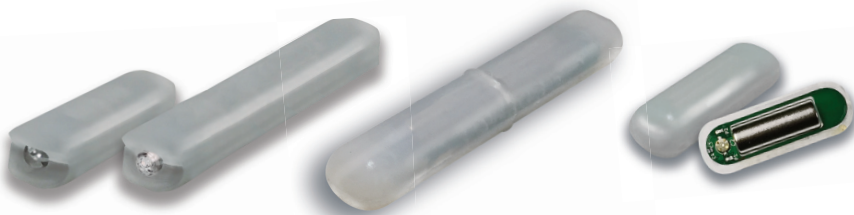


## SmartSENSE® wireless stir bars

- Continuous pH monitoring with pH*live*™
- Verification & documentation of actual spin with TrueSpin™
- Tight thermal control with dual temperature sensing
- Wireless access for remote monitoring & control
- Download of detailed data log for documentation and reporting

## Endless applications

- Preparing buffer solutions
- Performing titration
- Developing formulations
- Inert atmosphere reactions
- Quality Control
- GMP/GLP environments
- Pilot manufacturing
- Regulated environments



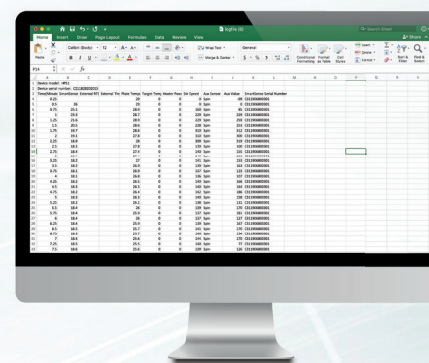
The growing family of smartSENSE® wireless stir bars is eliminating the need for external probes, wires and meters in the lab.

## Simplify your lab setup

### Temperature, Spin and pH Sensing Stir Bars WiFi Digital Programmable Hotplate Stirrer

Save valuable space with a single smartSENSE® system for heating and stirring as well as measurement, control and tracking of temperature, spin and pH.

The smartSENSE® WiFi chemical base station featuring an integrated digital programmable hotplate stirrer and RFID reader is the hub of the smartSENSE technology platform. The unit may be integrated with existing lab management or automation systems.



The smartSENSE® lab setup may be monitored and controlled from any device with a web browser. Connect directly via WiFi or your network.

# smartSENSE<sup>®</sup> Specifications

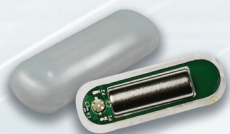
Wireless temperature, spin and pH/live™ sensing stir bars  
WiFi Digital Programmable Hotplate Stirrer

## smartSENSE<sup>®</sup> Stir Bar Temperature



**Temperature range:** 0-100degC/32-212degF  
**Length:** 40mm/1.6in and 75mm/3in  
**Magnet:** Neodymium  
**Power & communication:** Wireless RFID  
**Temperature:** Dual sensors  
**Material:** Solvent resistant EFEP Fluoropolymer  
**Accuracy:** +/- 1degC  
**Read distance:** 1.4in  
*Onboard memory for ID and calibration*

## smartSENSE<sup>®</sup> TrueSpin™ Temperature & Spin



**Temperature range:** 0-100degC/32-212degF  
**Spin accelerometer:** 60-1000RPM  
**Length:** 40mm/1.6in  
**Magnet:** Neodymium  
**Power & communication:** Wireless RFID  
**Temperature:** Dual sensors  
**Material:** Solvent resistant EFEP Fluoropolymer  
**Accuracy:** +/- 1degC  
**Read distance:** 1.4in  
*Onboard memory for ID and calibration*

## smartSENSE<sup>®</sup> pHlive™ Temperature & pH



NEW

**Temperature range:** 0-60degC/32-140degF  
**Sensor pH range:** 0-14  
**Length:** 40mm/1.6in and 75mm/3in  
**Magnet:** Neodymium  
**Power & communication:** Wireless RFID  
**Temperature:** Dual sensors  
**Accuracy:** +/- 1degC and pH +/- 0.005  
**Read distance:** 1.4in  
*Onboard memory for ID and calibration*

## smartSENSE<sup>®</sup> WiFi Digital Programmable Hotplate Stirrer:

**Temperature range:** 20-400degC/752degF  
**Communication:** WiFi, USB, RFID and Ethernet  
**Stirring speed:** 60-1000RPM  
**Plate dimensions:** 7x7in  
**Power supply:** 120V 60Hz  
**Instrument weight:** 2.1kg/4.6lbs  
**Connections:** TC and RTD External temperature probe

## Features

Accessible for lab automation, remote monitoring & control  
Software upgradeable to support future sensing features  
Remote access and download of data logs



Part #	Description
00102	smartSENSE Control Station / Digital Prog Hotplate Stirrer, 115V
00202	smartSENSE <sup>®</sup> Temp Stir Bar, 40mm
00204	smartSENSE <sup>®</sup> TrueSpin™ Temp & Spin Stir Bar, 40mm
00206	smartSENSE <sup>®</sup> Temp Stir Bar, 75mm
00208	smartSENSE <sup>®</sup> pHlive™ Temp & pH Stir Bar, 40mm
00210	smartSENSE <sup>®</sup> pHlive™ Temp & pH Stir Bar, 75mm