

# MAIN STREET (State Route 29) CORRIDOR STREETScape IMPROVEMENT



PROJECT:





## **IMMOKALEE CRA**

**Debrah Forester:** CRA Director  
**Christie Betancourt:** CRA Operations Manager  
**Yvonne Blair:** CRA Project Manager

## **FDOT**

**Darryl Richard, RLA:** Landscape Architect  
FDOT Project Liaison

## **JOHNSON ENGINEERING INC.**

**Jeff Nagle, RLA:** Project Manager  
**Tyler Rubley:** Landscape Designer  
**Connor Eisenbraun:** Landscape Designer  
**Amanda Martin, AICP:** Planner  
**Kevin Nguyen, P.E.:** Civil Engineer  
**Josh Hildebrand, P.E.:** Transportation Engineer  
**David Hyatt, LS:** Surveyor  
**John Curtis:** Environmental Scientist

# DESIGN TEAM:

## WHAT WE NEED

★ **Safety for walking & biking**

★ **Downtown revitalization**

★ **Litter abatement**

★ **Discourage loitering**

★ **Suppress feral chickens**

## WHAT WE REVIEWED

- Continuous and controlled accessible route
  - Repair for damaged existing sidewalks
  - Shared biking and walking networks
  - Reducing obstacles in the sidewalk
  - Accessible and adequate bicycle amenities
- 

- Aesthetic continuity, features and materials
  - Supporting a clean and well-maintained streetscape
  - Installing visual cues
  - Incentives for maintaining streetscape
- 

- Sources of litter pollution
  - Litter receptacle locations
  - Quantity and size of litter receptacles
  - Signed litter or recycling receptacles
  - Alternative litter control (compacting receptacles)
- 

- Problematic areas (businesses, uses, locations)
  - Short-term resting opportunities
  - Long-term resting areas opportunities (bus stops)
  - New design elements to achieve desired results
- 

- Problematic areas (routine gathering locations)
- Favorable feral chicken habitat
- Design elements to discourage favorable habitat

## WHAT WE NEED

★ Safety for walking & biking

★ Downtown revitalization

★ Litter abatement

★ Discourage loitering

★ Suppress feral chickens

## WHAT WE KNOW

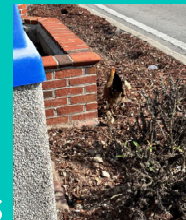
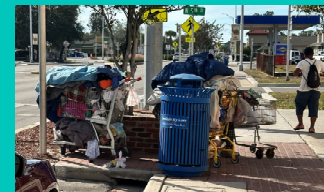
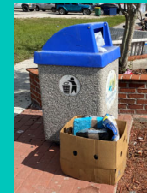
- High bike use exists
- No bike lanes exist
- Need bike parking/storage

- Existing streetscape is outdated and unappealing
- Site furnishings are deteriorating or missing

- Existing loose litter on streetscape
- Existing trash receptacles are not sized or located adequately

- Homeless camps exist on streetscape
- Existing food pantry creates extended stays

- Existing landscape areas create habitat for feral chickens
- No existing predator for the feral chickens
- The feral chickens are damaging existing landscaping and pose a human health concerns





## **WHAT WE KNOW**

- High bike use exists
- No bike lanes exist
- Need bike parking/storage
  
- Existing streetscape is outdated and unappealing
- Site furnishings are deteriorating or missing
  
- Existing loose litter on streetscape
- Existing trash receptacles are not sized or located adequately
  
- Homeless camps exist on streetscape
- Existing food pantry creates extended stays
  
- Existing landscape areas create habitat for feral chickens
- No existing predator for the feral chickens
- The feral chickens damage existing landscaping and pose human health concerns

## **SOLUTION**

- Provide “Share The Sidewalk” signs
- Provide additional bike racks
  
- Provide new furnishings that meet the intended design and aesthetic requirements.
  
- Provide trash receptacles with greater capacity and locate appropriately
  
- Provide furnishings that deter long stays in designated seating areas
- Coordinate incentives with food pantry for container returns
  
- Remove or reduce chicken habitat by eliminating chickens access to at grade landscape areas

## Existing Constraints

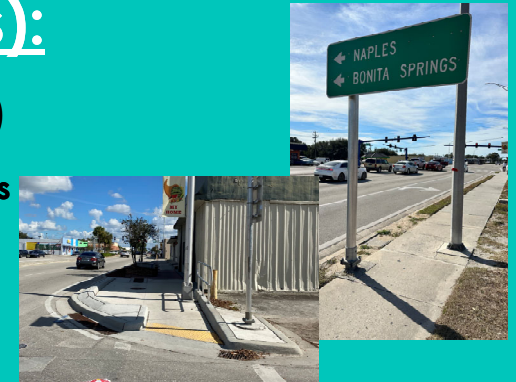
### Existing Site Geometry:

- No Demarcated Parallel parking spaces along SR 29
- Existing driveway access (aprons) behind the parallel parking
- Unconventional curbing layout at bump out intersections
- Existing obstructions within the sidewalk route (signs and light poles)



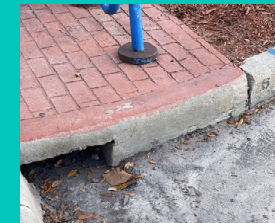
### Regulatory (FDOT Design Restrictions):

- **4' Clear Zones from traveled lanes**  
(no physical obstructions other than regulatory signs and service points)  
(no plantings other than groundcover below 18" height)
- **500' -550' Clear Sight Lines from turning vehicles, side streets & driveways**  
(no obstruction above 18" & below 8.5')  
(tree species, location, spacing and height limitations)
- **100' no planting area from median nosing's**  
(landscaping limited to groundcover 18" height or less)



### Utility Conflicts:

- Underground electric
  - Underground fiber optic
  - Underground telephone
  - Underground potable water
  - Underground non-potable water
  - Underground sanitary sewer
  - Underground storm drainage
- (all utility lines require a 10' clearance from trees)



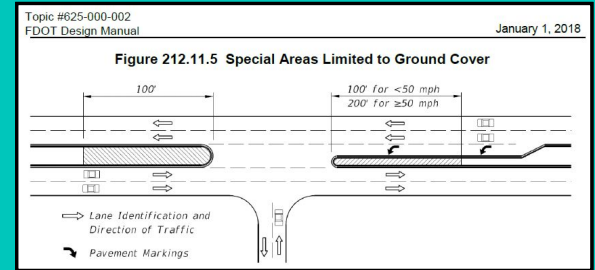


# FDOT REQUIREMENTS

STANDARD DISTRICT ONE "OFF-SET" REQUIREMENTS

	BACK OF GUARDRAIL ASPHALT PAD	SIGNS	R/W FENCE	LIGHT POLES	ITS POLES	ITS UNDERGROUND FACILITIES	DRAINAGE STRUCTURES	UNDERGROUND UTILITIES	OVERHEAD UTILITIES (1)	BOTTOM OF SWALE (2)
TREES	15 FT.	20 FT.	15 FT.	25 FT.	30 FT.	15 FT.	15 FT.	15 FT.	25 FT.	8 FT.
PALMS	15 FT.	20 FT.	15 FT.	15 FT.	30 FT.	15 FT.	15 FT.	15 FT.	25 FT.	8 FT.
SHRUBS	15 FT.	5 FT.	15 FT.	15 FT.	30 FT.	15 FT.	15 FT.	10 FT.	15 FT.	8 FT.

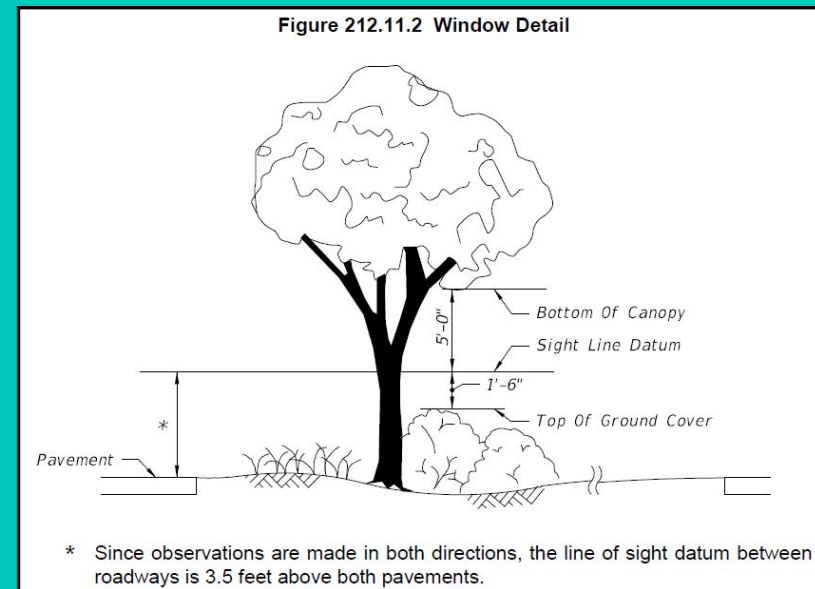
NOTES:



**Table 215.2.2 Minimum Lateral Offset Criteria**

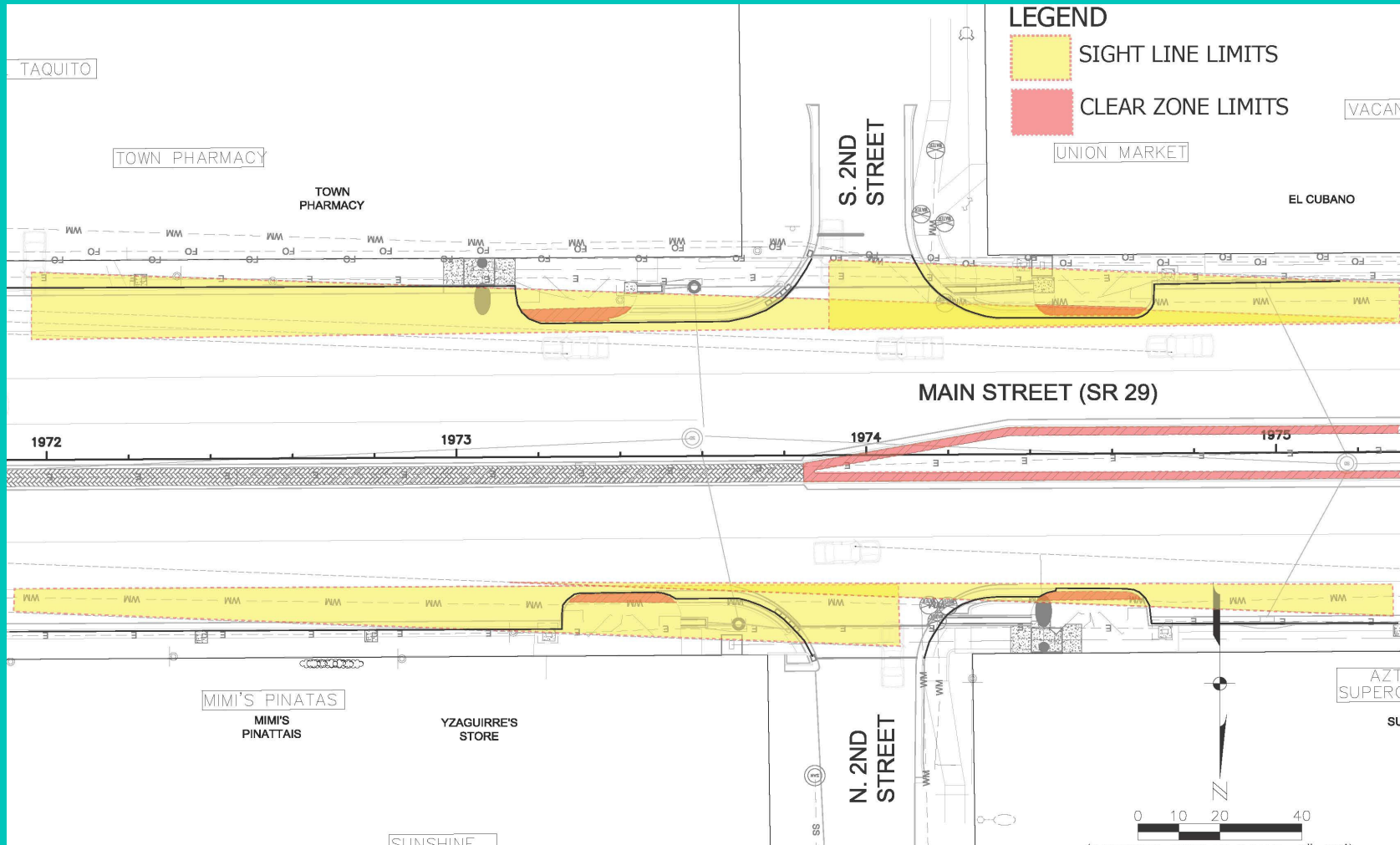
Design Element	Curbed Roadways				High Speed Curbed and Flush Shoulder Roadway
	New Construction	RRR			
	Design Speed				
	25-35 mph	40-45 mph	25-35 mph	40-45 mph	
Light Poles	Conventional	Do not locate in Medians, except in conjunction with barriers that are justified for other reasons. See <i>FDM 215.2.9</i> .			
	High Mast	1.5 feet	4.0 feet	1.5 feet	1.5 feet
Signal Poles and Controller Cabinets	Do not locate in Medians. See <i>FDM 215.2.9</i> .				
Traffic Infraction Detectors	1.5 feet   4.0 feet   1.5 feet   1.5 feet   Outside Clear Zone				
ITS Poles and Related Items	Pole & Other Aboveground Fixed Objects	Do not locate in Medians, except in conjunction with barriers that are justified for other reasons. See <i>FDM 215.2.9</i> .			
	Equipment Shelters and Towers	1.5 feet	4.0 feet	1.5 feet	4.0 feet
Traffic Control Signs	Breakaway Objects	Do not locate within the limited-access right of way, except as allowed by <i>Policy No. 000-625-025, Telecommunications Facilities on Limited Access Rights of Way</i> .			
	Single and Multi-Column Overhead Sign Structures	1.5 feet	4.0 feet	1.5 feet	4.0 feet
Trees	Where the diameter is or is expected to be > 4 inches measured 6 inches above the ground	Locate in accordance with Standard Plans.			
	RRR Projects: (1) Meet New Construction criteria for new plantings.	1.5 feet	4.0 feet	1.5 feet	1.5 feet

(Aboveground hazard is anything greater than 4" in height)



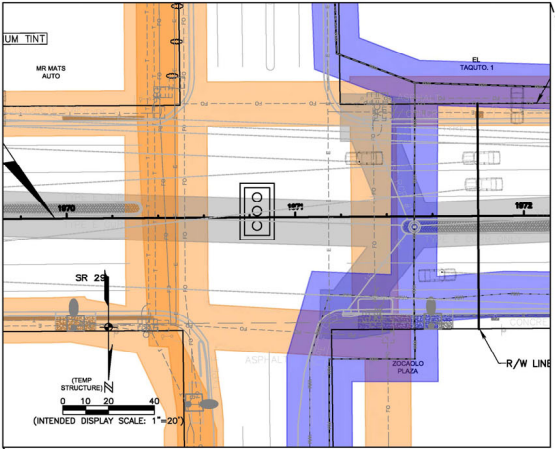
(no obstruction above 18" & below 8.5')

# FDOT REQUIREMENTS





# Existing Utility Conditions

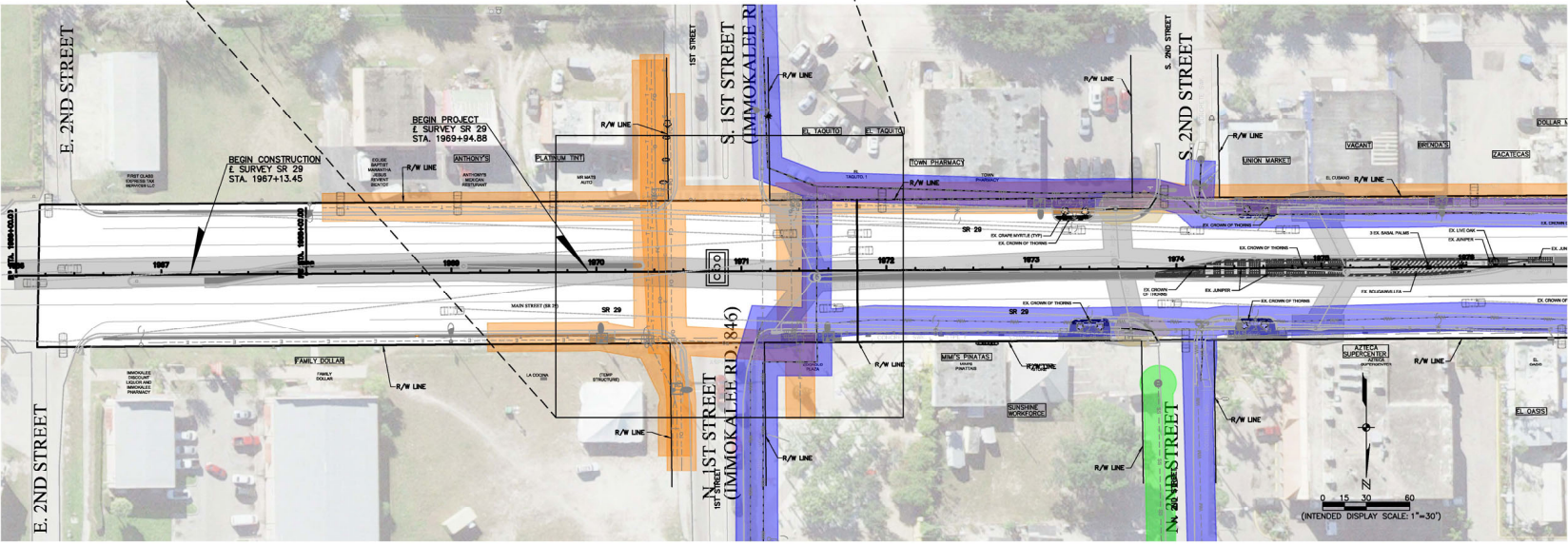


**EXISTING 10' UTILITY OFFSETS LEGEND**

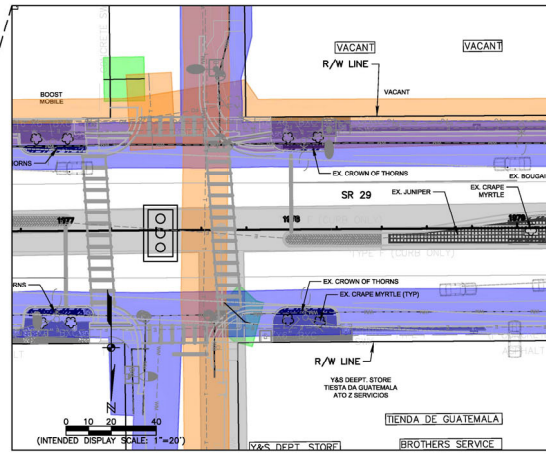
	EX. POTABLE WATER
	EX. FIBER OPTIC CABLE
	EX. DRAINAGE PIPE
	EX. BURIED TELEPHONE LINE
	EX. NON-POTABLE WATER
	EX. SANITARY SEWER
	EX. SANITARY SEWER PIPE/ CULVERT

**EXISTING HARDSCAPE LEGEND**

	EX. MEDIAN PAVERS
	EX. SOD TO BE REMOVED
	EX. PAVERS TO BE REMOVED
	EX. CONCRETE
	EX. STAMPED CONCRETE TO BE REMOVED



# Existing Utility Conditions

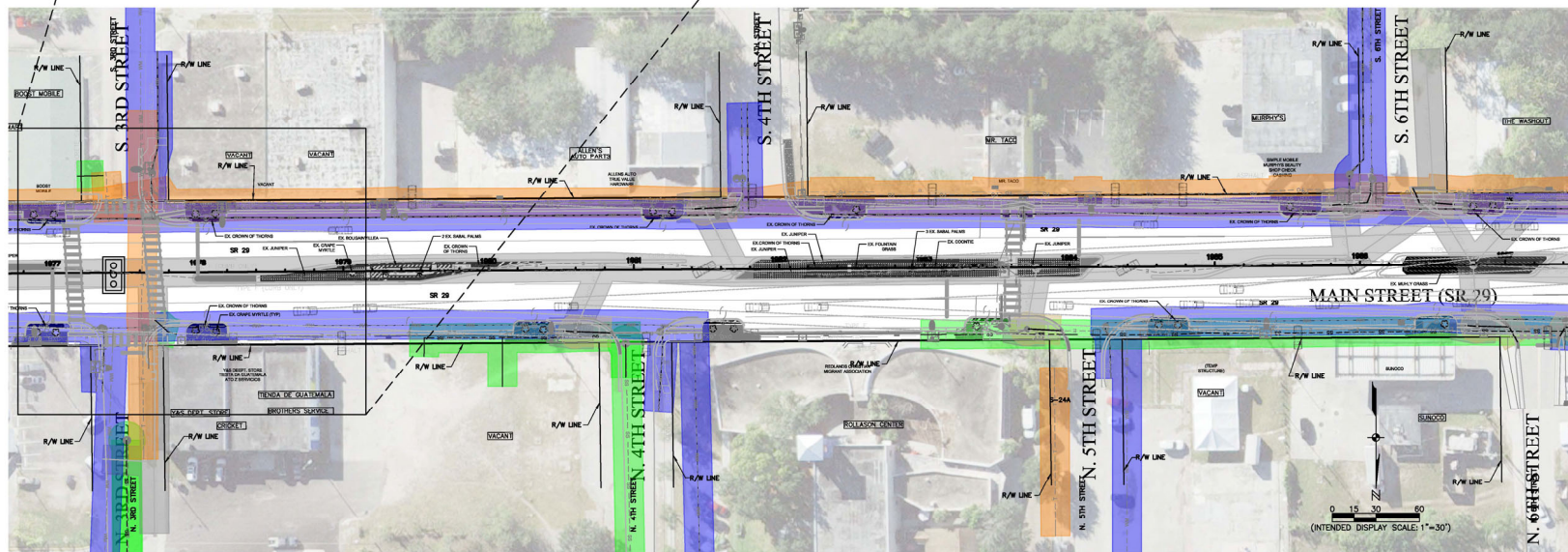


## EXISTING 10' UTILITY OFFSETS LEGEND

- EX. POTABLE WATER
- EX. FIBER OPTIC CABLE
- EX. DRAINAGE PIPE
- EX. BURIED TELEPHONE LINE
- EX. NON-POTABLE WATER
- EX. SANITARY SEWER
- EX. SANITARY SEWER PIPE/CULVERT

## EXISTING HARDSCAPE LEGEND

- EX. MEDIAN PAVERS
- EX. SOD TO BE REMOVED
- EX. PAVERS TO BE REMOVED
- EX. CONCRETE
- EX. STAMPED CONCRETE TO BE REMOVED





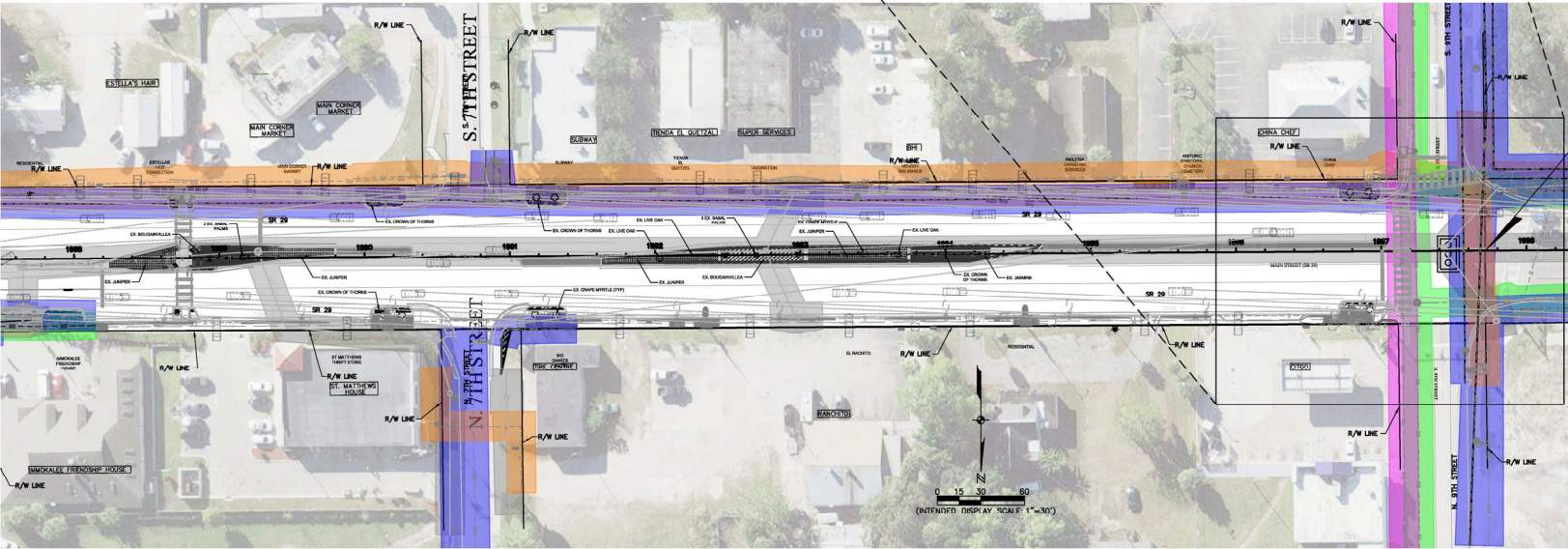
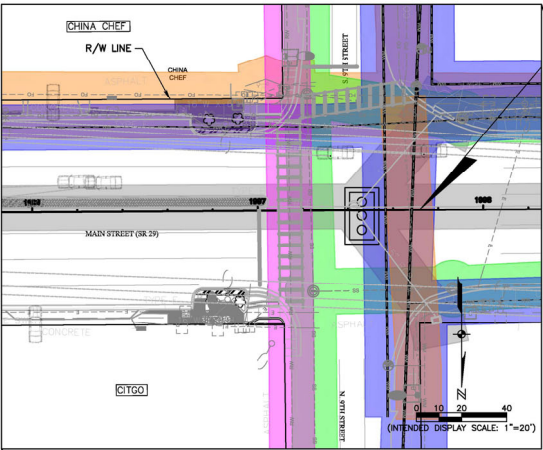
# Existing Utility Conditions

**EXISTING 10' UTILITY OFFSETS LEGEND**

- EX. POTABLE WATER
- EX. FIBER OPTIC CABLE
- EX. DRAINAGE PIPE
- EX. BURIED TELEPHONE LINE
- EX. NON-POTABLE WATER
- EX. SANITARY SEWER
- EX. SANITARY SEWER PIPE/ CULVERT

**EXISTING HARDSCAPE LEGEND**

- EX. MEDIAN PAVERS
- EX. SOD TO BE REMOVED
- EX. PAVERS TO BE REMOVED
- EX. CONCRETE
- EX. STAMPED CONCRETE TO BE REMOVED



# Hardscape Options

## Concrete Sidewalk Accents

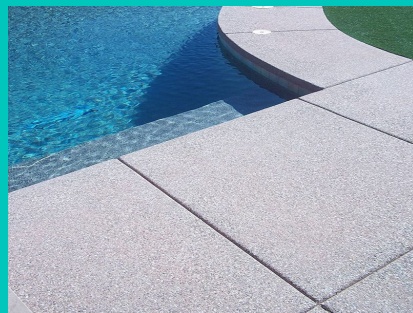
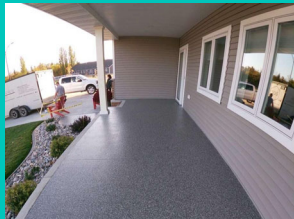
## Roadway Accents



**Surface Paint**



**Stamped/Colored Asphalt**



**Epoxy Finish**

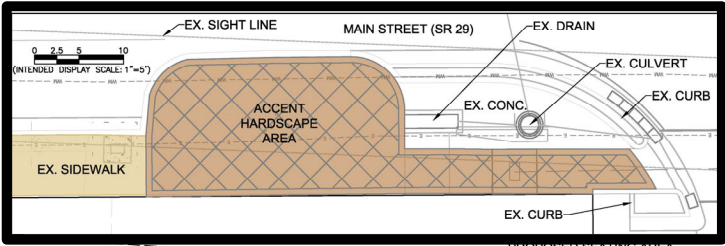


**Concrete Pavers**



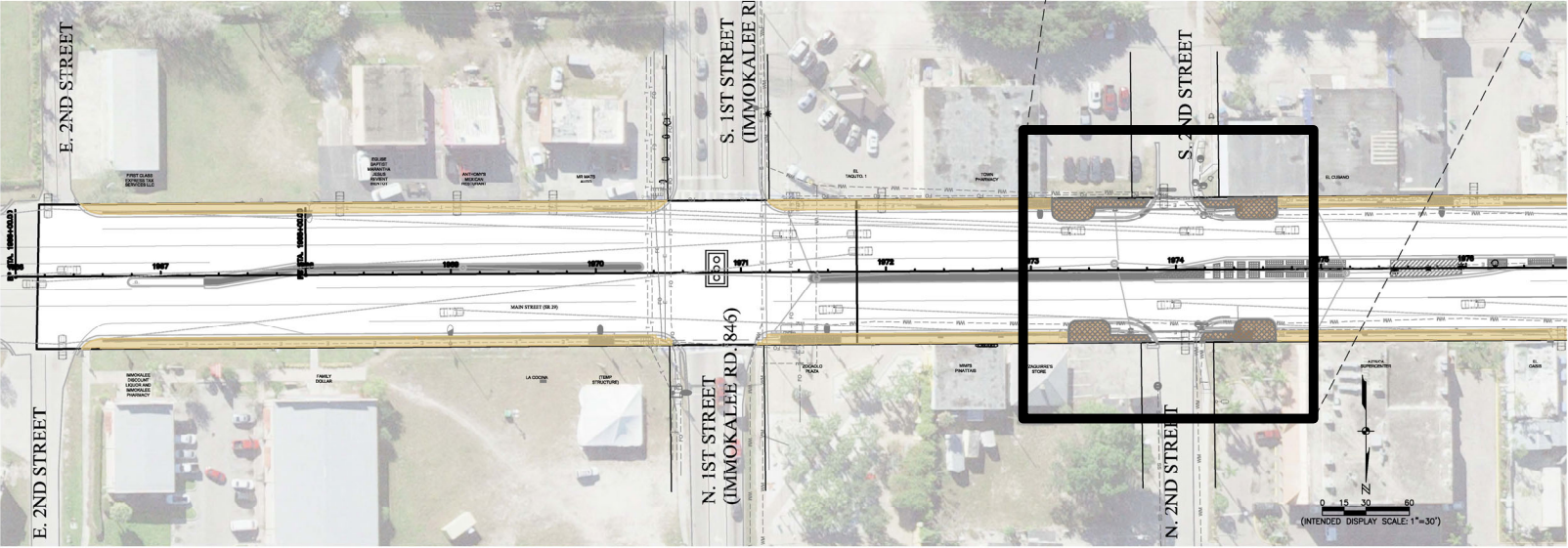
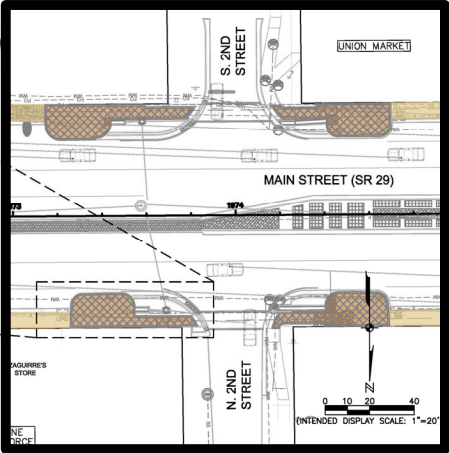


# Proposed Hardscape Improvements

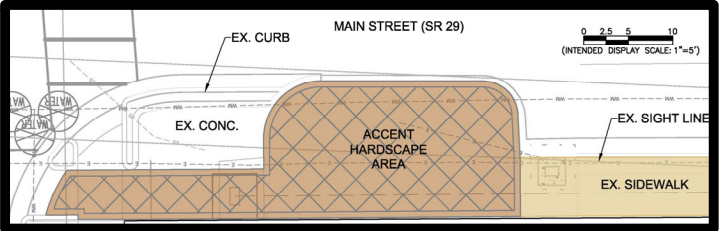
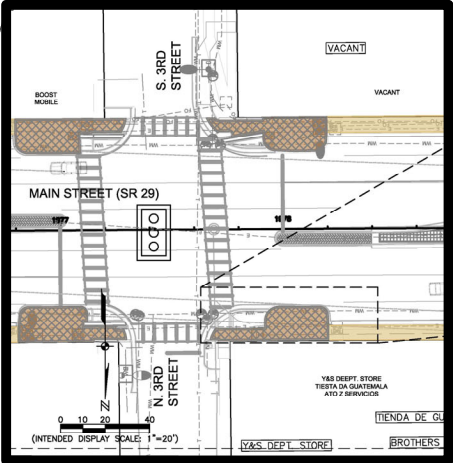


SIDEWALK AREAS
  ACCENT AREAS

MAIN STREET HARDSCAPE IMPROVEMENTS LAYOUT



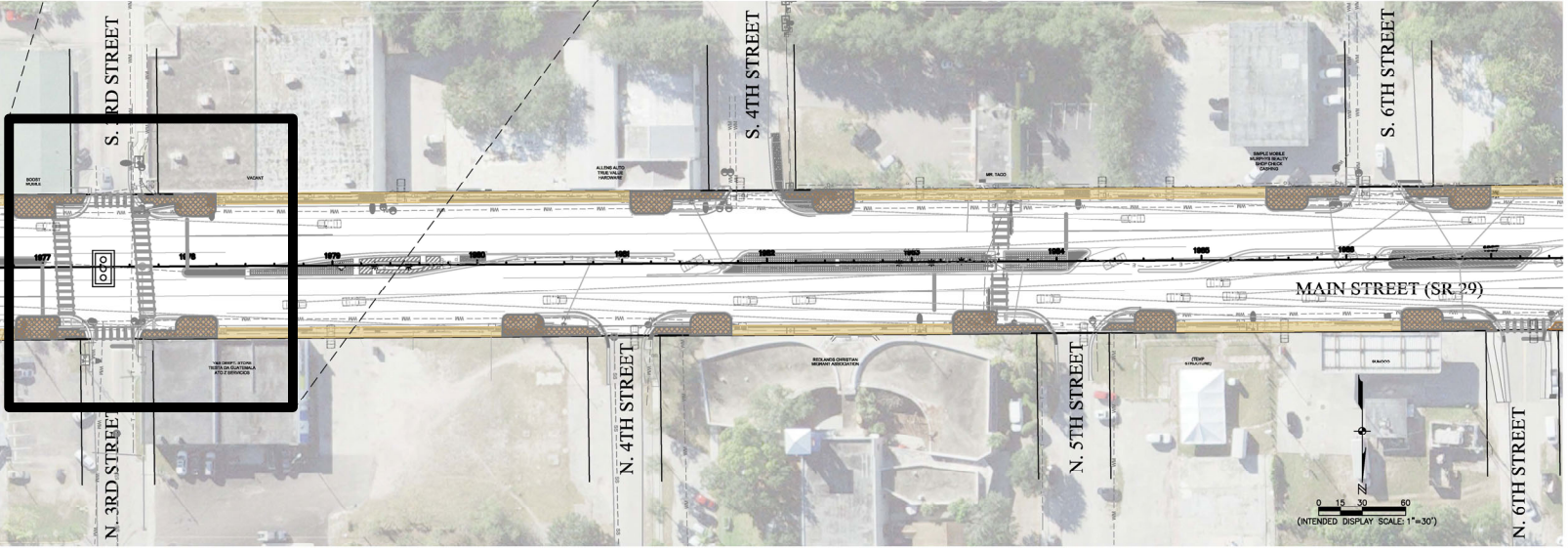
# Proposed Hardscape Improvements



PROPOSED SEATING AREA  
HARDSCAPE LAYOUT

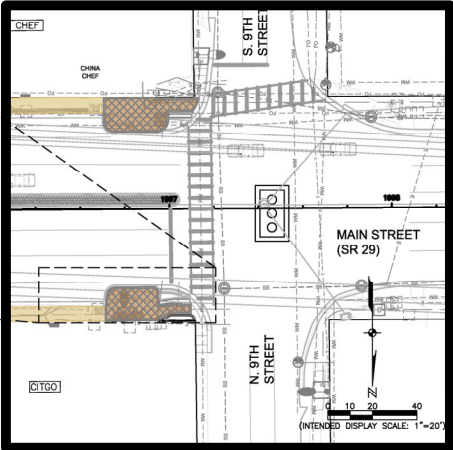
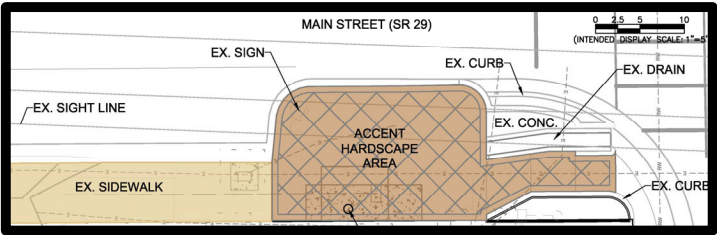
SIDEWALK AREAS
  ACCENT AREAS

MAIN STREET HARDSCAPE IMPROVEMENTS LAYOUT

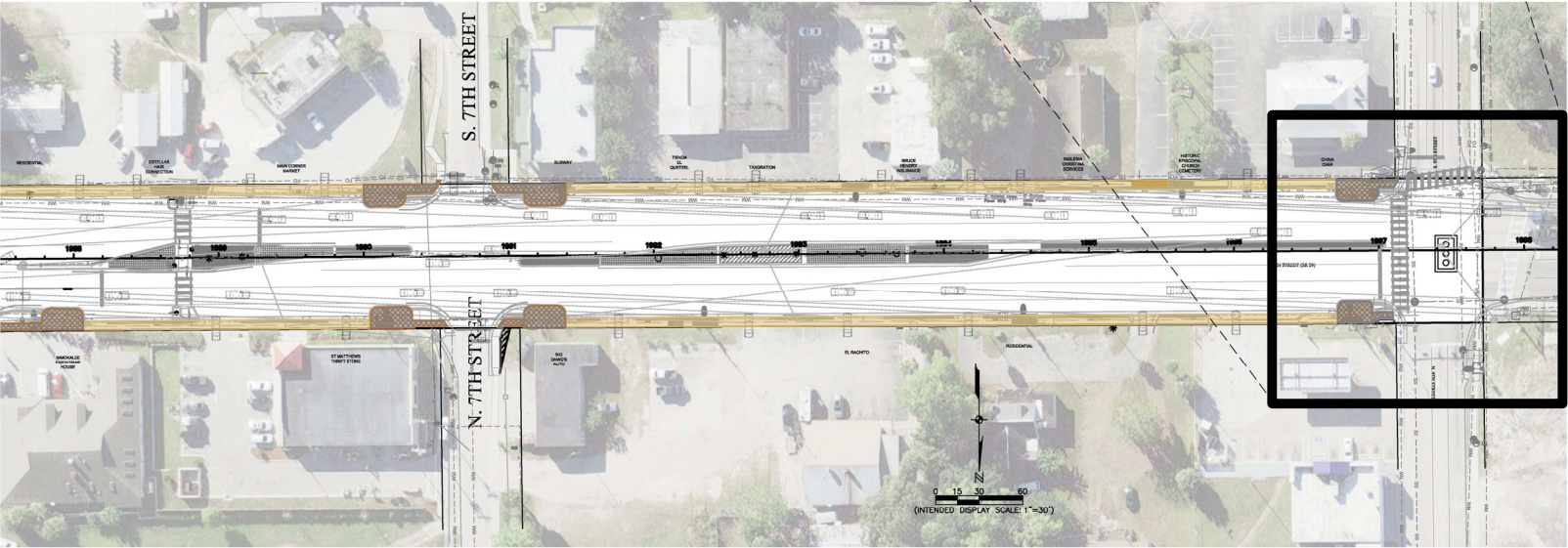




# Proposed Hardscape Improvements

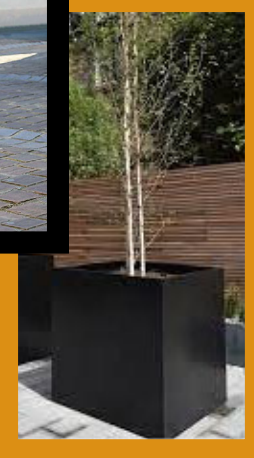


■ SIDEWALK AREAS    ■ ACCENT AREAS  
**MAIN STREET HARDSCAPE IMPROVEMENTS LAYOUT**





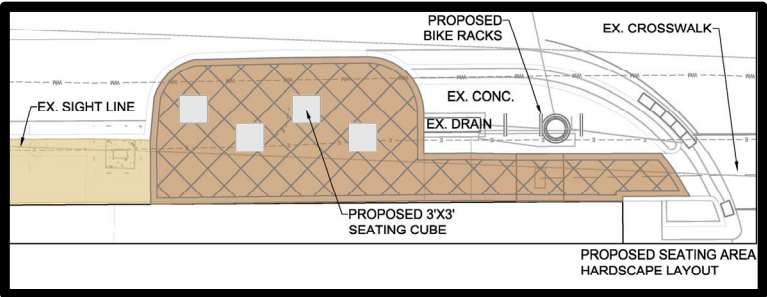
# Furnishing Options



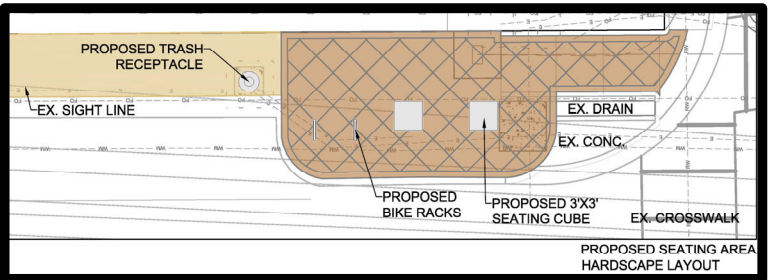
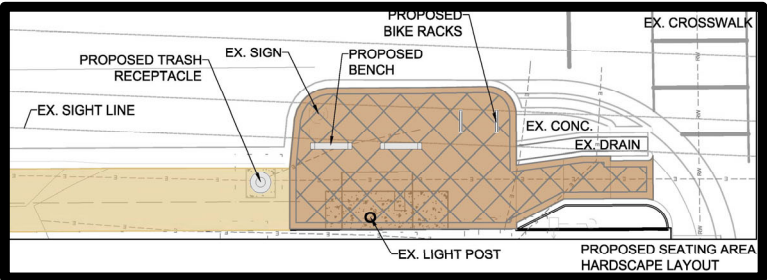
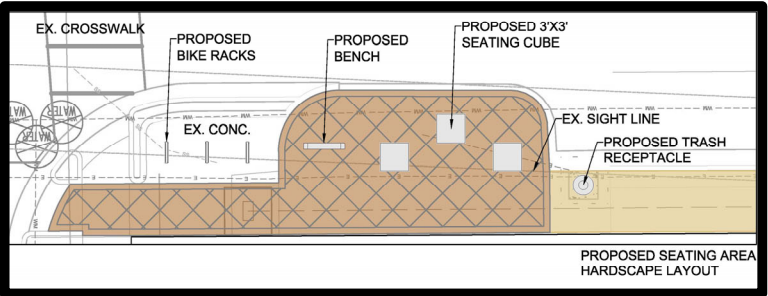
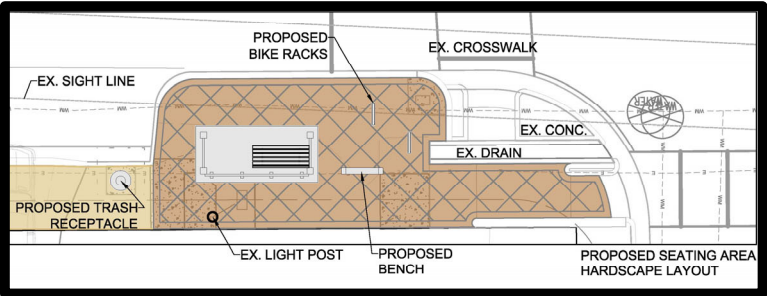
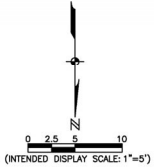
Concrete Options

Metal Options

# Proposed Hardscape Improvements



## TYPICAL SITE FURNISHINGS LAYOUT

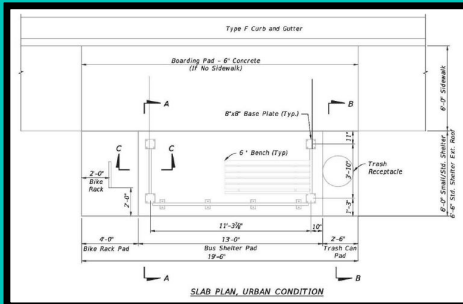


# Additional Amenity Options

Subject to FDOT approval

## Collier County Standard Bus Shelter

Located on northeast corner of 3<sup>rd</sup> Street



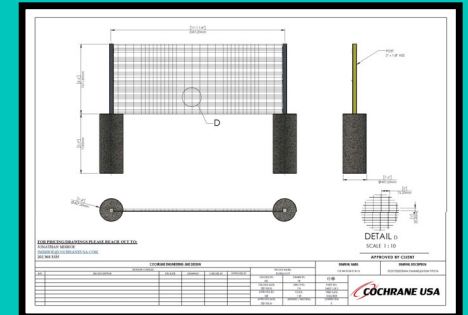
## Structured Shade Systems

Located within bump out sitting areas



## Mid-Block Crossing Control Fencing

Located within median landscaping



**CLEARVU**  
COCHRANE'S INVISIBLE WALL

**COCHRANE USA**  
cochrane.global.com



# Plant Palette Selection

## Trees/Palms



**Natchez Crape Myrtle**



**Muskogee Crape Myrtle**



**Desert Cassia**

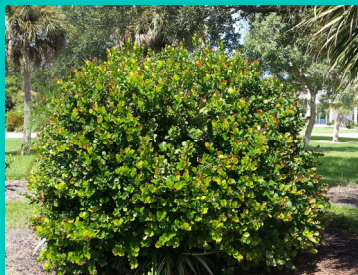


**Pygmy Date Palm**



**European Fan Palm**

## Large Shrubs



**Cocoplum**



**Silver Buttonwood**



**Clusia**



**Jamaican Caper**



**Golden Thryallis**



**Silver Saw Palmetto**

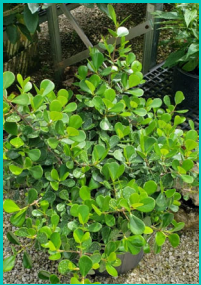


**Simpson Stopper**



# Plant Palette Selection

## Small Shrubs



Small Leaf Clusia



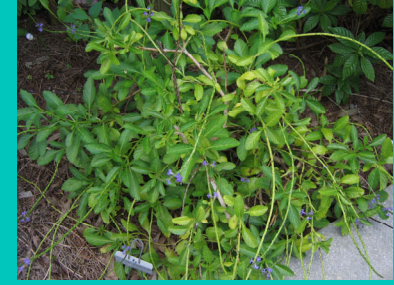
Carissa



White Bougainvillea



Pink Bougainvillea



Blue Porterweed



Golden Creeper

## Ornamental Grasses



Muhly Grass



Sand Cord Grass



Fakahatchee Grass



White Fountain Grass



Purple Lovegrass



Elliott's Lovegrass

## Groundcover



Asiatic Jasmine



Perennial Peanut



Foxtail Fern



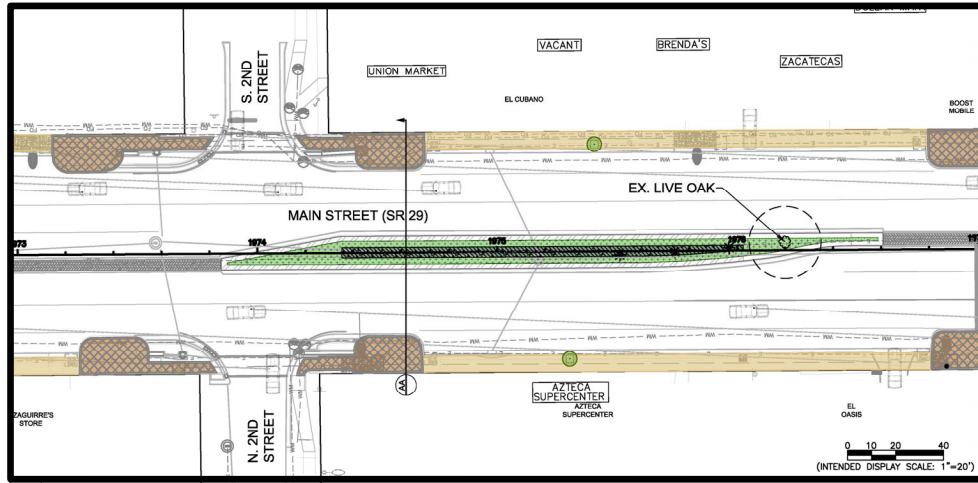
Variegated Flax Lily








Sword Fern

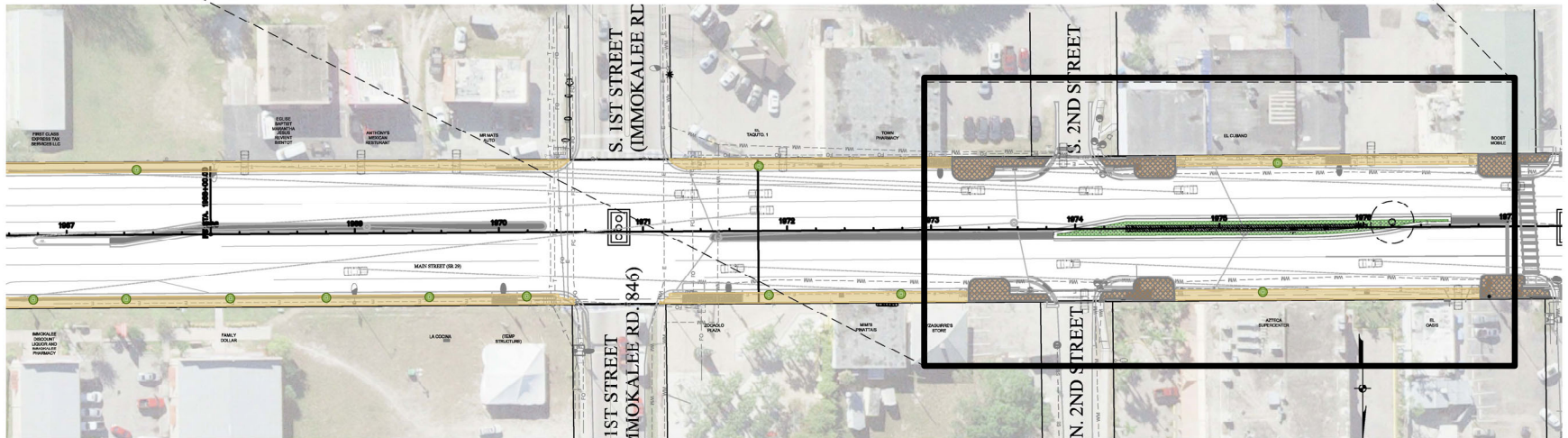


# Landscape Improvements



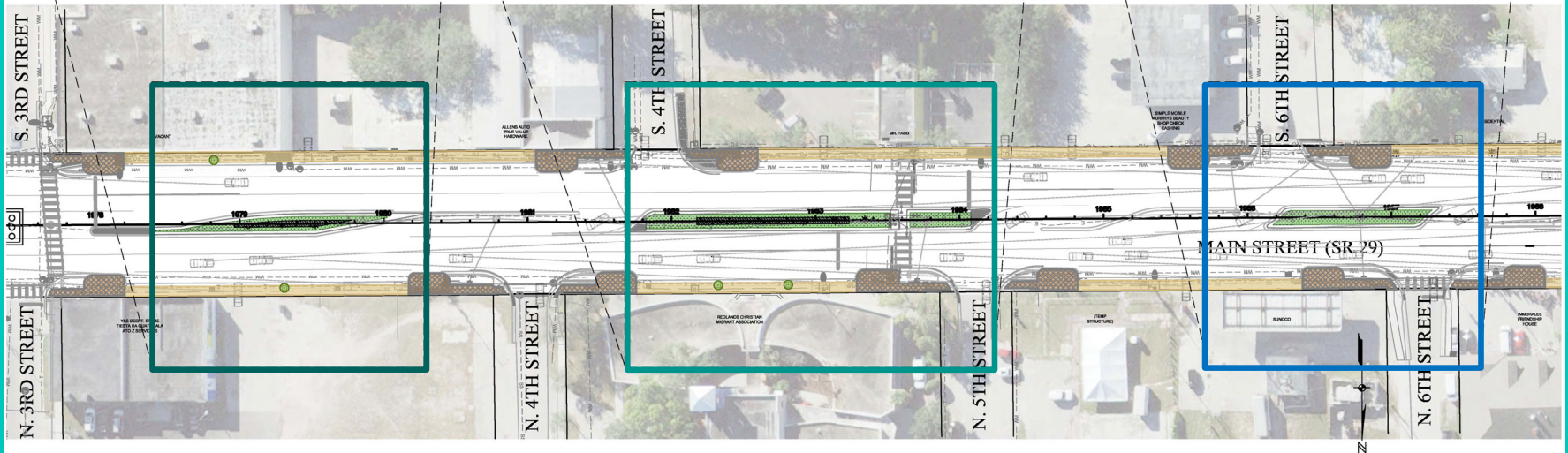
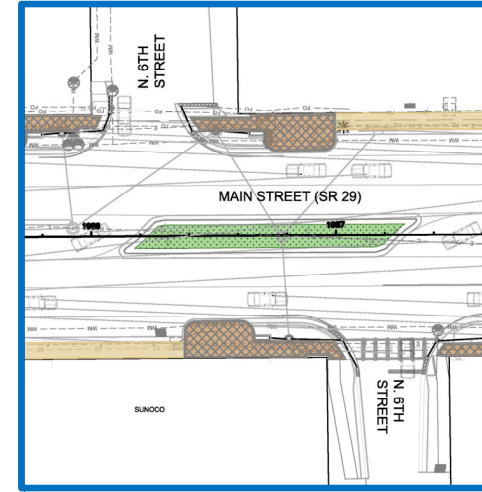
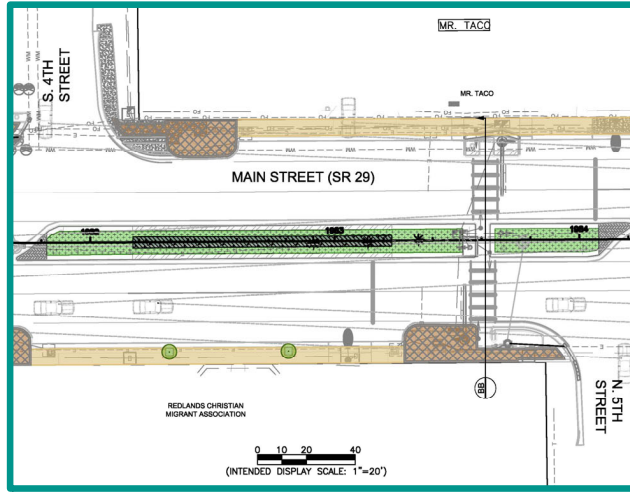
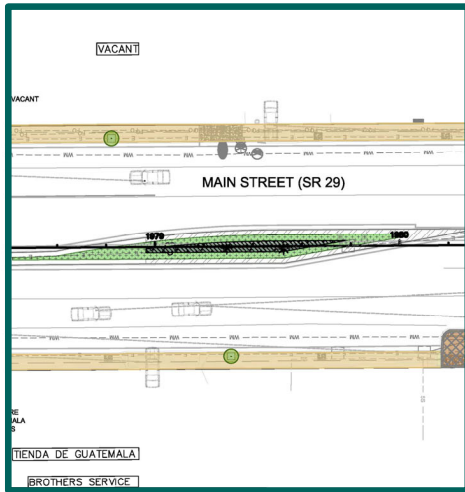
## MAIN STREET LANDSCAPE IMPROVEMENTS

-  CLEAR ZONE AREAS
-  GROUNDCOVER AREAS (<18")
-  MEDIUM SHRUB AREAS (>18")
-  PROPOSED PLANTER WITH 8' PALM
-  EXISTING TREES
-  EXISTING PALMS

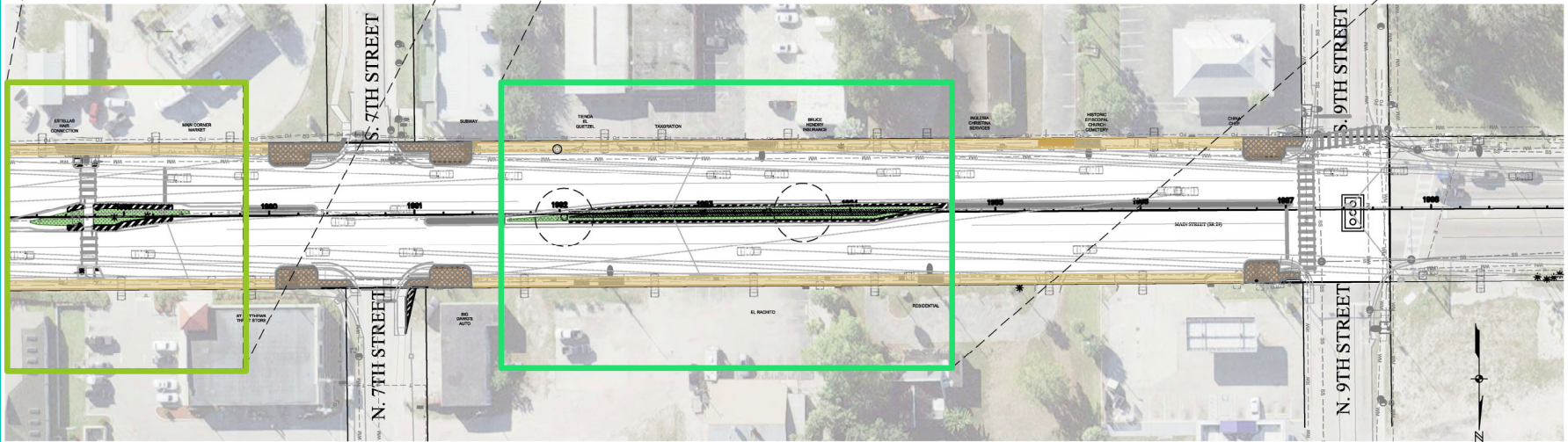
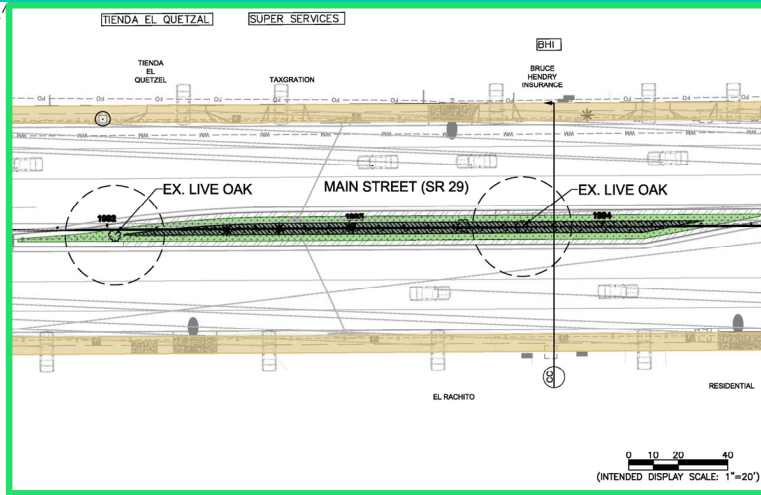
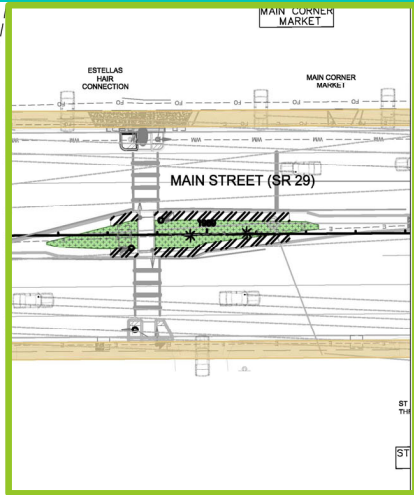




# Landscape Improvements

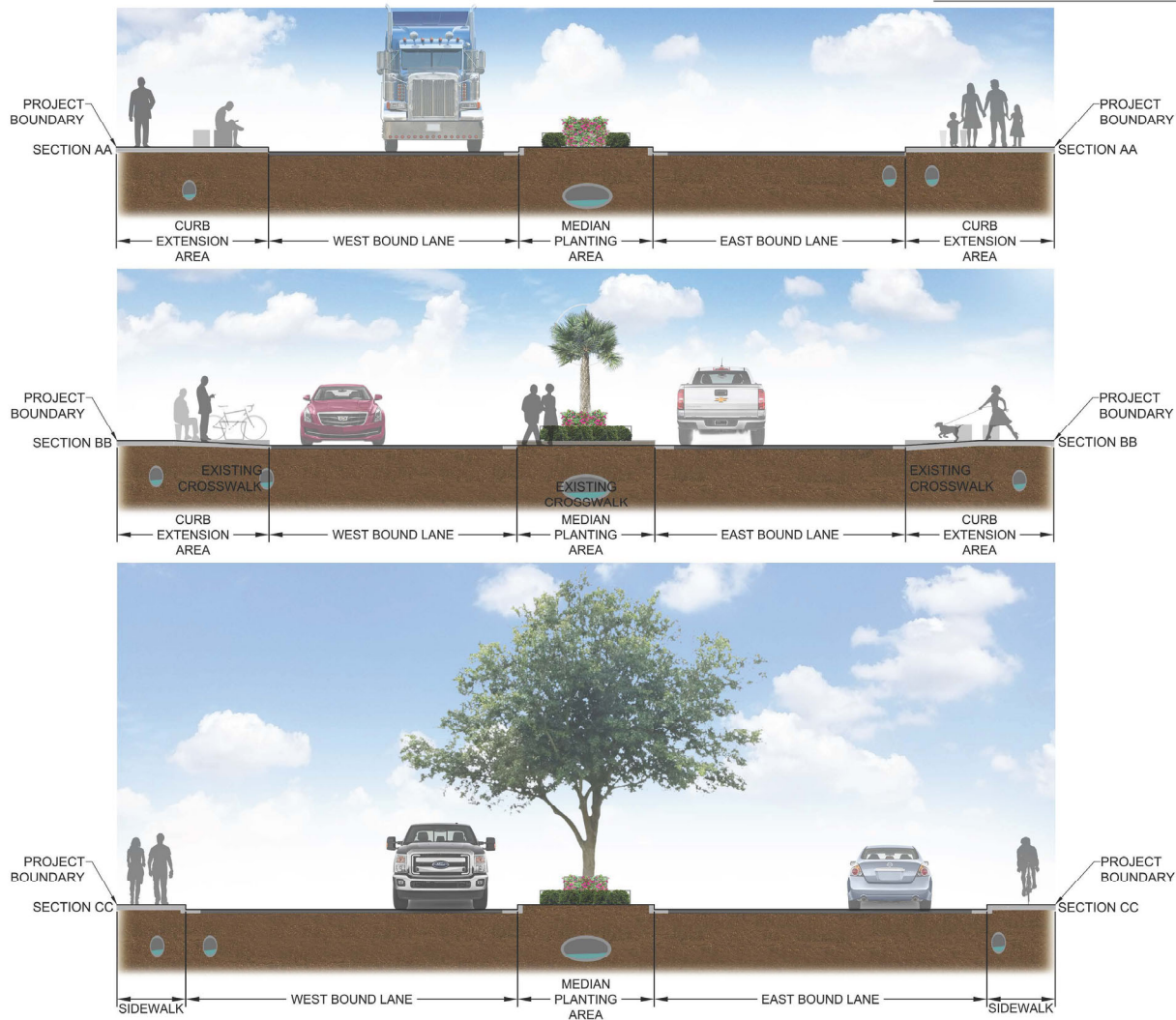


# Landscape Improvements



# Landscape Improvements

TYPICAL PROPOSED LANDSCAPE SECTIONS





# Next scheduled Meeting

Final Concept Review  
March 15, 2023

9:00 am

Next Step:

Thank You for Your Participation!

