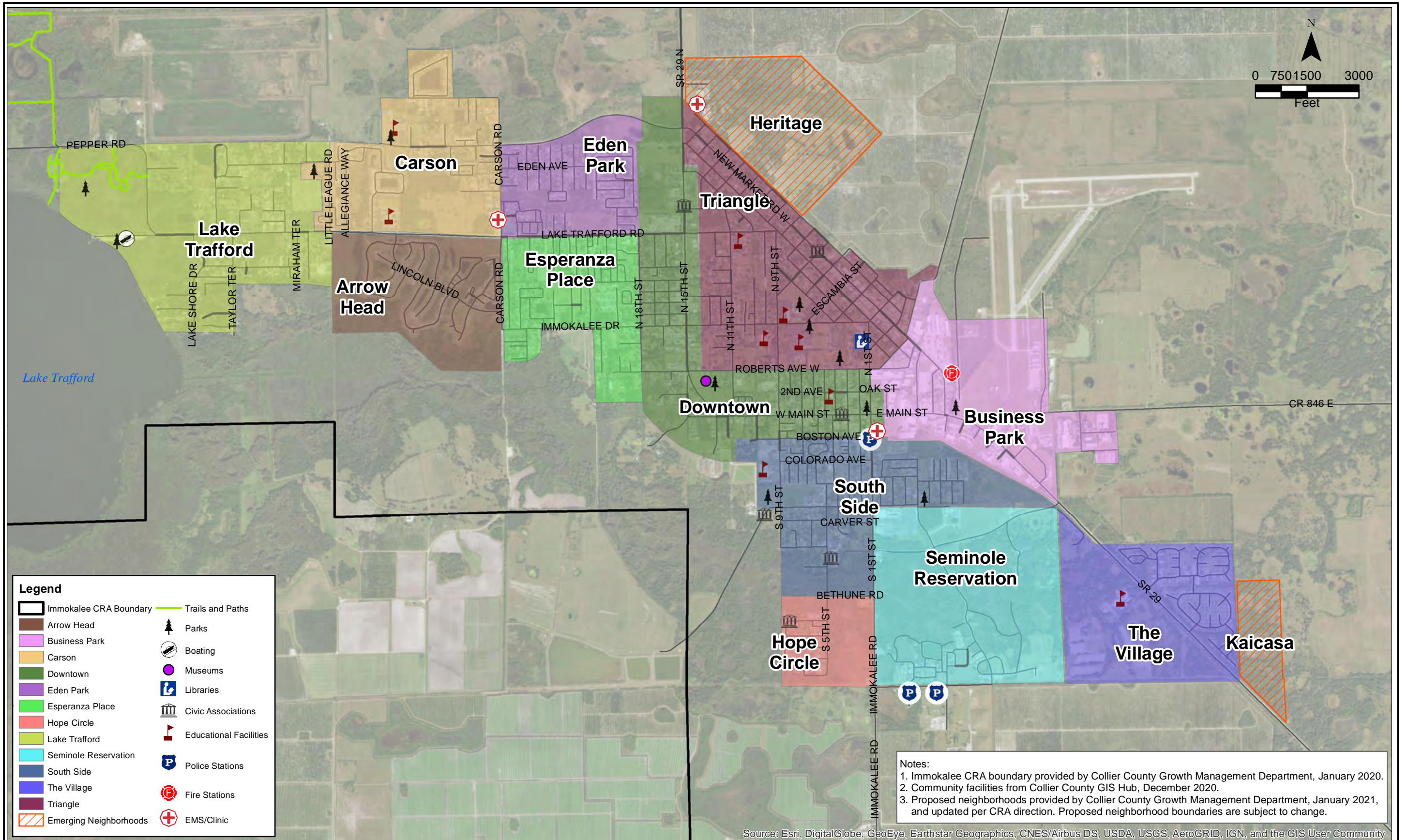


## 2022 Immokalee Redevelopment Plan Update: Goal Validation

### Draft Themes & Goals

| Theme   | Current Redevelopment Plan Goal  | Proposed Goal   |
|---|--|---|
| Celebrate Culture                                     | N/a  | Highlight the diverse cultures of Immokalee by promoting community events and adding unique cultural identifiers in public open spaces and streetscapes.  |
| Prioritize Recreation Facilities                      | N/a  | Provide adequate levels of service for all age groups through increased public investment to maintain existing facilities and to plan and fund new facilities.  |
| Promote Economic Development                          | <p>Improve both the landside and airside facilities at the Immokalee Regional Airport and Industrial Park to meet the future demands for all forms of aviation and business development activities.</p> <p>Create adaptive development standards in each of the subdistricts identified in the Immokalee Overlay District to permit flexibility and incentives for redevelopment and development.</p> <p>Diversify the economy by encouraging the recruitment of businesses to the Immokalee Regional Airport and Industrial Park.</p> | Direct public investment to promote business development, strengthen opportunities for job training and post-secondary education, and continue developing Immokalee Airport's role as a center for aviation and business development. |
| Provide Community Facilities                          | <p>Encourage neighborhood stability through the implementation of additional streetlights, sidewalks, and landscaping throughout the community.</p> <p>Enhance the physical appearance of properties within the Main Street area.</p>  | Encourage public investment in public realm improvements and implement regulatory standards for private development to enhance community character.   |
| Improve Housing Conditions and Expand Housing Options | <p>Provide opportunities for adequate, safe, and affordable housing. Encourage the development of both affordable rental and home ownership through rehabilitation and new construction.</p> <p>Develop a program to address the replacement of existing old mobile homes with newer mobile home units or modular homes.</p>   | Expand housing affordability and home ownership opportunities through increased housing choices and through assistance programs to rehabilitate dilapidated residential units.  |
| Provide Safe and Convenient Mobility Options          | Develop a circulation pattern for the community, which will provide safe and efficient access throughout the community. This network would include a loop road to provide the separation of commercial truck traffic from-tourist designated places and residential developments.  | Provide road improvements for connectivity to accommodate pedestrians, bicyclists, vehicles and transit with focus on enhancing safety and filling gaps in the existing networks.   |
| Promote Ecotourism and Agrotourism                    | Provide opportunities for capturing the tourist trade by creating eco-tourism opportunities at Lake Trafford, Peppers Ranch, and Roberts Ranch.  | Provide opportunities for capturing the tourist trade by creating eco-tourism opportunities at Lake Trafford, Peppers Ranch, and Roberts Ranch as well as agritourism opportunities.  |
| Improve Drainage and Lake Trafford Water Quality      | Improve the drainage system throughout the community and improve the appearance and function of the open drainage swales throughout the community.   | Direct investment in public infrastructure to address drainage issues and to support water quality initiatives so Lake Trafford endures as a sustainable natural and recreational amenity.  |

W:\2020\20203067-007\ArcGIS\021921 11x17 Residential\NeighborhoodMap.mxd Date: 3/8/2021 Time: 11:14:57 AM User: MAG



**Legend**

|                        |                        |
|------------------------|------------------------|
| Immokalee CRA Boundary | Trails and Paths       |
| Arrow Head             | Parks                  |
| Business Park          | Boating                |
| Carson                 | Museums                |
| Downtown               | Libraries              |
| Eden Park              | Civic Associations     |
| Esperanza Place        | Educational Facilities |
| Hope Circle            | Police Stations        |
| Lake Trafford          | Fire Stations          |
| Seminole Reservation   | EMS/Clinic             |
| South Side             |                        |
| The Village            |                        |
| Triangle               |                        |
| Emerging Neighborhoods |                        |

**Notes:**  
 1. Immokalee CRA boundary provided by Collier County Growth Management Department, January 2020.  
 2. Community facilities from Collier County GIS Hub, December 2020.  
 3. Proposed neighborhoods provided by Collier County Growth Management Department, January 2021, and updated per CRA direction. Proposed neighborhood boundaries are subject to change.

Source: Esri, DigitalGlobe, GeoEye, Earthstar Geographics, CNES/Airbus DS, USDA, USGS, AeroGRID, IGN, and the GIS User Community



Immokalee Community  
 Redevelopment Plan Update  
 Collier County, Florida



JOHNSON ENGINEERING, INC.  
 2122 JOHNSON STREET  
 P.O. BOX 1550  
 FORT MYERS, FLORIDA 33902-1550  
 PHONE (239) 334-0046  
 FAX (239) 334-3661  
 E.B. #642 & L.B. #642

Neighborhood Map  
 FOR DISCUSSION

|                  |                             |          |                   |            |
|------------------|-----------------------------|----------|-------------------|------------|
| DATE<br>FEB 2021 | PROJECT NO.<br>20203067-007 | FILE NO. | SCALE<br>AS SHOWN | SHEET<br>1 |
|------------------|-----------------------------|----------|-------------------|------------|