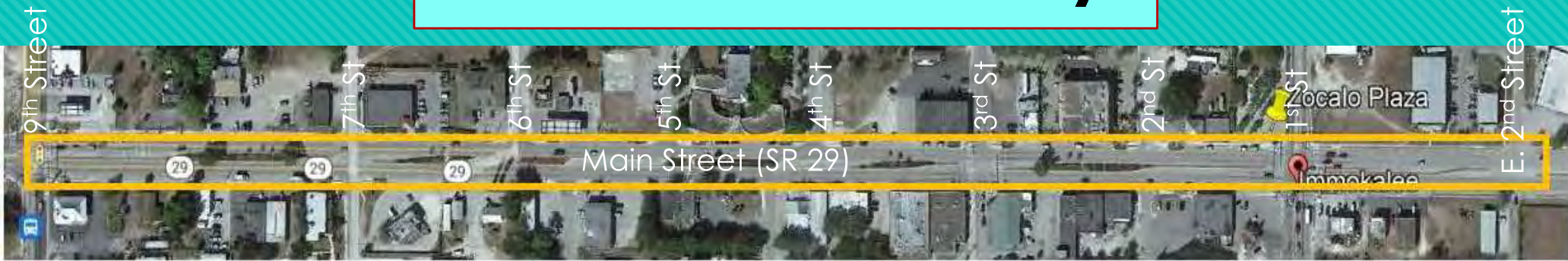
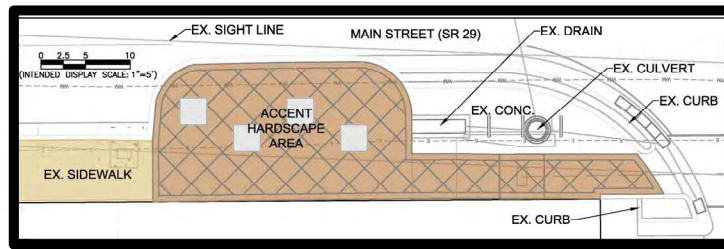


# MAIN STREET (State Route 29) CORRIDOR STREETScape IMPROVEMENT

## Preference Survey

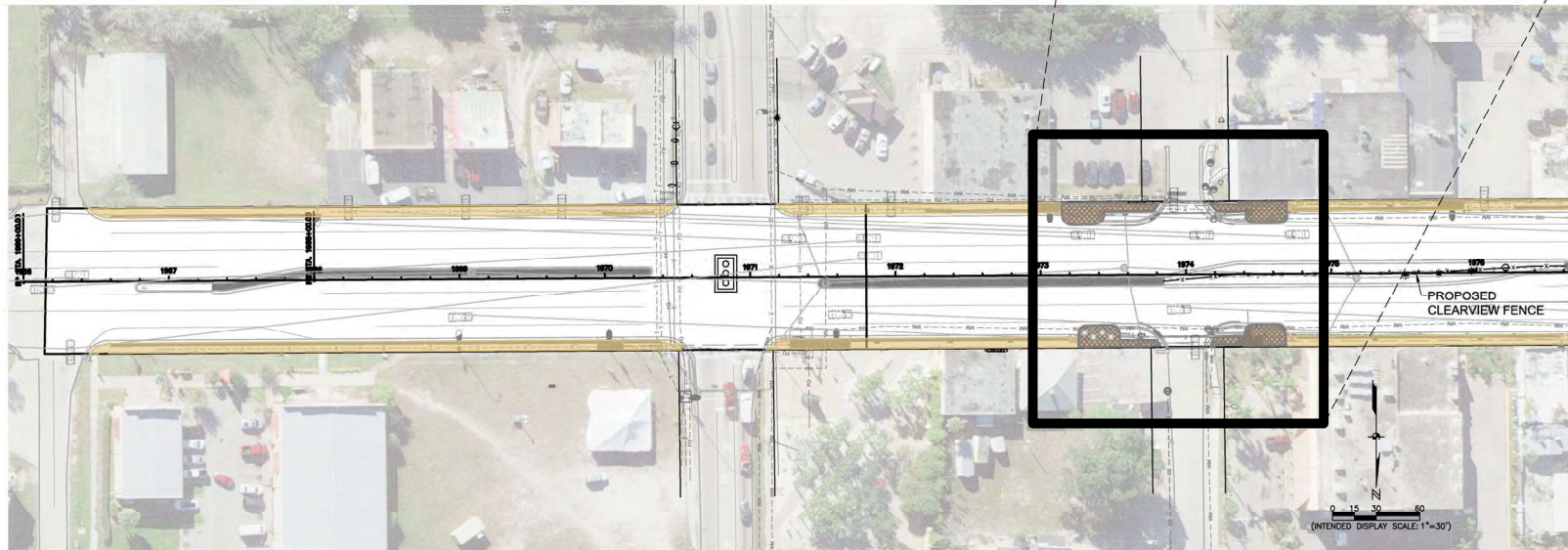
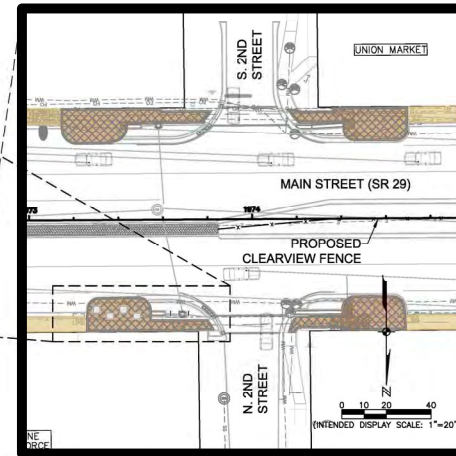


# Proposed Hardscape Improvements

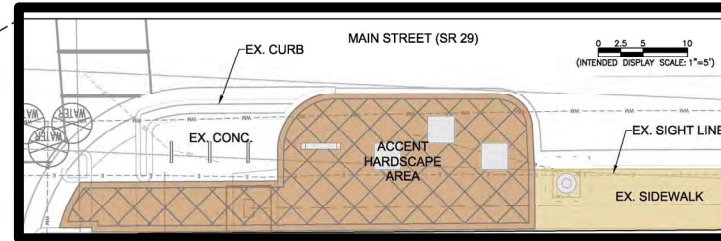
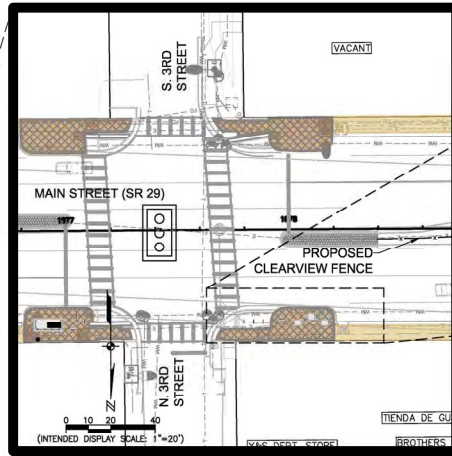


SIDEWALK AREAS      ACCENT AREAS

MAIN STREET HARDSCAPE IMPROVEMENTS LAYOUT



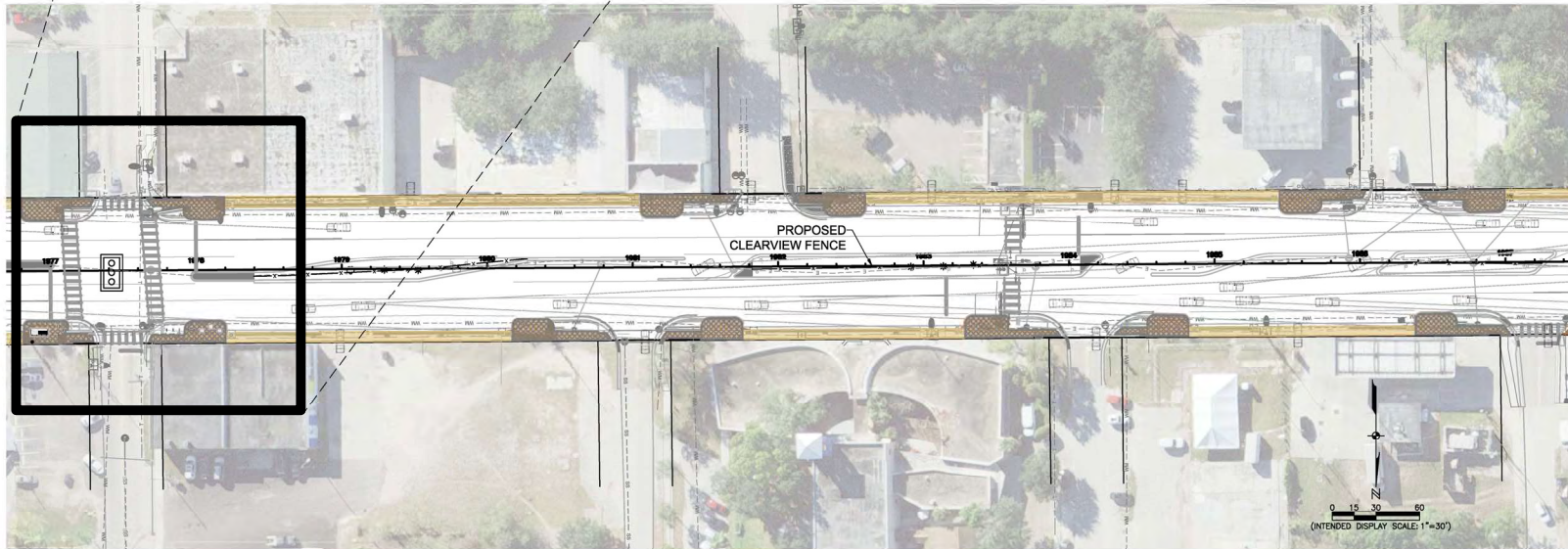
# Proposed Hardscape Improvements



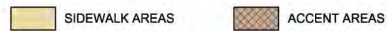
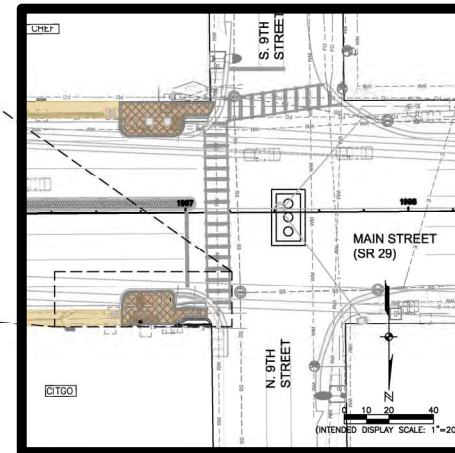
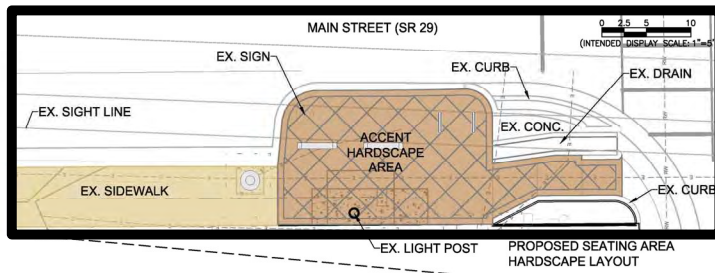
PROPOSED SEATING AREA  
HARDSCAPE LAYOUT

■ SIDEWALK AREAS      ■ ACCENT AREAS

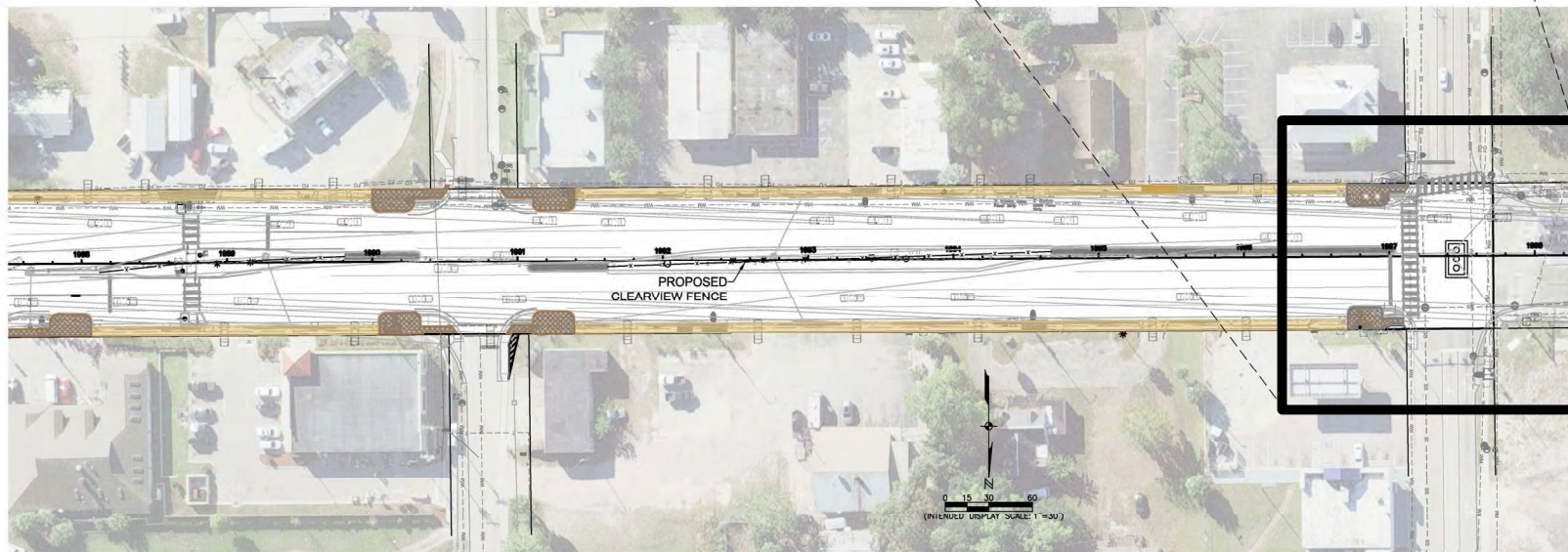
MAIN STREET HARDSCAPE IMPROVEMENTS LAYOUT



# Proposed Hardscape Improvements



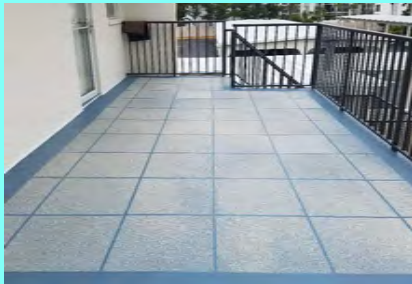
MAIN STREET HARDSCAPE IMPROVEMENTS LAYOUT



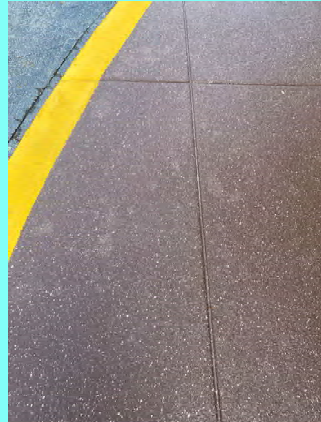
# Hardscape Options

## Concrete Sidewalk Accents

Select ONLY 1  
(Option A or B)

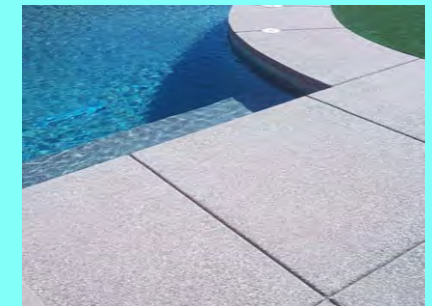
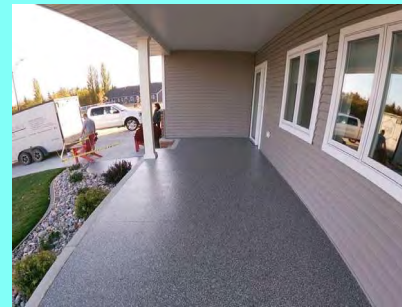


**COST: ± \$4.5/\$6.5 SF**  
**TOTAL: ± \$274,625**



**Option A**  
**Surface Paint**

**COST: ± \$20 SF**  
**TOTAL: ± \$1,152,500**

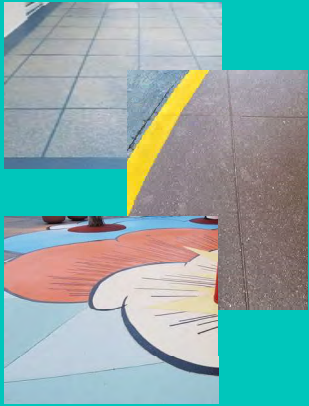


**Option B**  
**Epoxy Finish**

# Hardscape Options

## Concrete Sidewalk Surface Paint Selection Palette

### Option A Surface Paint



#### Estimated Surface Paint Cost:

Sidewalk (28,600 SF x \$4.5 SF) = \$128,700

Sitting Area Accent (14,000 SF x \$6.5 SF)  
= \$91,000

Total Sidewalk & Accent Surface Painting  
( \$219,700 [25%]) =

**\$274,625**

### Color:

#### Option A - Preference 1

Select 3 color preferences for blended color or 1 for general sidewalks. (example: Smoke, Sahara, Carmel)

#### Option A - Preference 2

Select 2 color preferences for blended color or 1 for sitting area accents. (example: Peach, Coral)



### Sitting Area Accent:

#### Option A - Preference 3

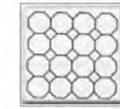
Select 1 pattern preference  
(example: herringbone)



Ashlar Slate



Basket weave



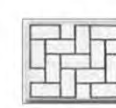
Diamond Tile



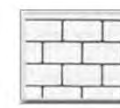
Old English Cobblestone



Square Tile



Herringbone



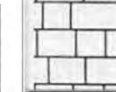
Regal Tile



Mock Herringbone



Random Blue Stone



Jumbo Brick



Running Bond



Rustic Brick



Face Brick



Stacked Bond

# Hardscape Options

## Concrete Sidewalk Epoxy Surfacing Selection Palette

### Option B Epoxy Finish



#### Estimated Epoxy Surfacing Cost:

Sidewalk (28,600 SF x \$20 SF) = \$572,000

Sitting Area Accent (14,000 SF x \$25 SF) = \$350,000

Total Sidewalk & Accent Epoxy Surfacing (\$922,000 [25%]) =

**\$1,152,500**

#### Color:

##### Option B - Preference 1

Select 3 color preferences for blended color or 1 for general sidewalks. (example: Smoke, Sahara, Carmel)

##### Option B - Preference 2

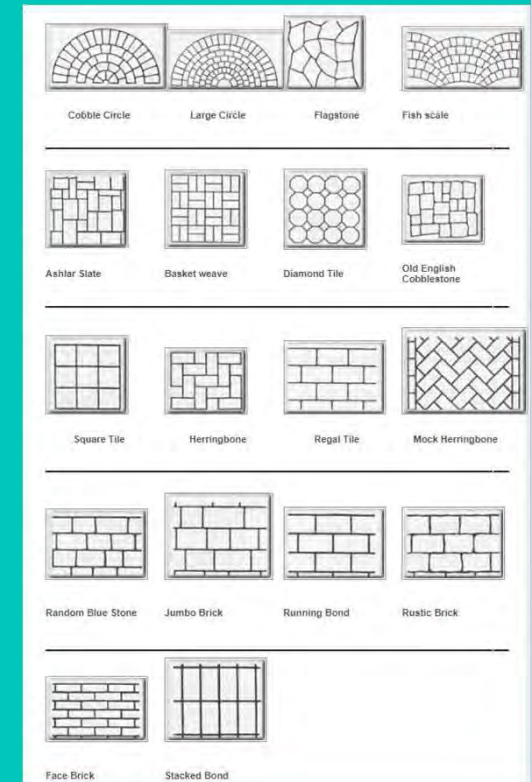
Select 2 color preferences for blended color or 1 for sitting area accents. (example: Peach, Coral)

Brick Red	Walnut Grove	Yellow	Brown	Seclusion
Terra Cotta	Red	Dark Lagoon	Blue	Phantom
Salmon	Green	Bayou Teal	Amazon	Pewter
Peach	Ocean Wave	Verte	Forest Shade	Sonora Sea
Coral	Sealoom	Herbal Garden	Biscayne	Sabal
Carmel	Cielster	Kanga	Bristol Beige	Eureka
Mexicana	Champagne	Fawn Beige	Smoke	Finch
Eggshell	Parisienne	Bamboo	Sahara	Silver Screen

#### Sitting Area Accent:

##### Option B - Preference 3

Select 1 pattern preference (example: herringbone)



# Hardscape Options

Roadway Accents

Select ONLY 1

(Option C or D)



**COST: ± \$11.5 SF**  
**TOTAL: ± \$90,562**



**Option C**  
**Stamped/Colored Asphalt**

**COST: ± \$20 SF**  
**TOTAL: ± \$126,000**



**Option D**  
**Concrete Pavers**



# Hardscape Options

## 1<sup>st</sup> Street Crosswalk Stamp/Color Asphalt Selection Palette

### Crosswalk Color:

#### Option C – Preference 1

Select 1 color preference for field.  
(example: Old Brick)

#### Option C – Preference 2

Select 1 color preference for banding.  
(example: Yellow)

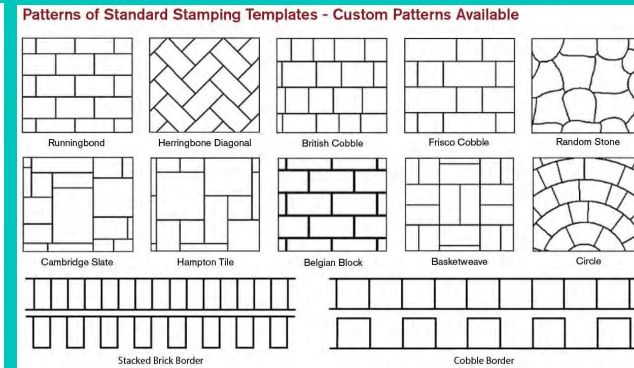
### Crosswalk Pattern:

#### Option C – Preference 3

Select 1 pattern preference for field.  
(example: herringbone)

## Option C

## Stamp/Color Asphalt



### Estimated Crosswalk Stamp/Colored Asphalt Cost:

$$(6,300 \text{ SF} \times \$11.5 \text{ SF}) = \$72,450$$

$$\text{Total Crosswalk Concrete} \\ (\$72,450 [25\%]) =$$

**\$90,562**

# Hardscape Options

## 1<sup>st</sup> Street Crosswalk Concrete Pavers Selection Palette

### Option D Concrete Pavers



#### Estimated Crosswalk Concrete Pavers Cost:

$(6,300 \text{ SF} \times \$20 \text{ SF}) = \$126,000$

Total Crosswalk Concrete Pavers  
(\$126,000 [25%]) =  
**\$325,000**

#### Crosswalk Color:

##### Option D – Preference 1

Select 1 color preference for field color.  
(example: Coffee)

##### Option D – Preference 2

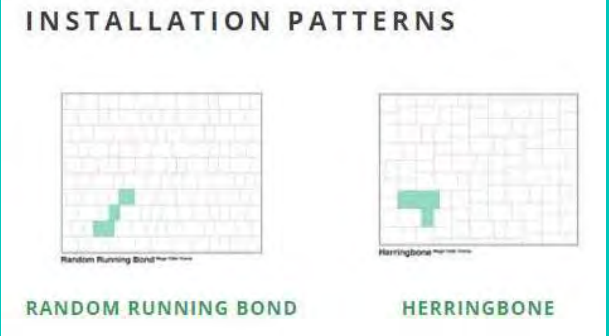
Select 1 color preference for banding color.  
(example: label B)



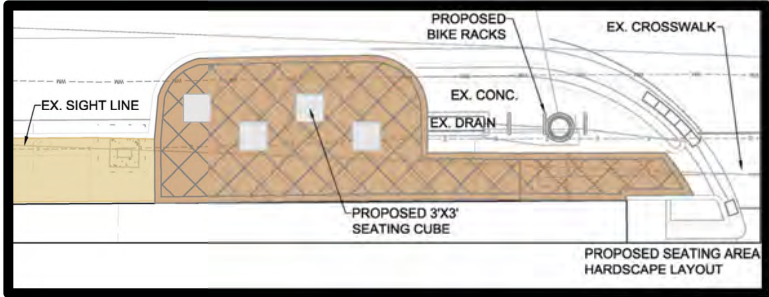
#### Crosswalk Pattern:

##### Option D – Preference 3

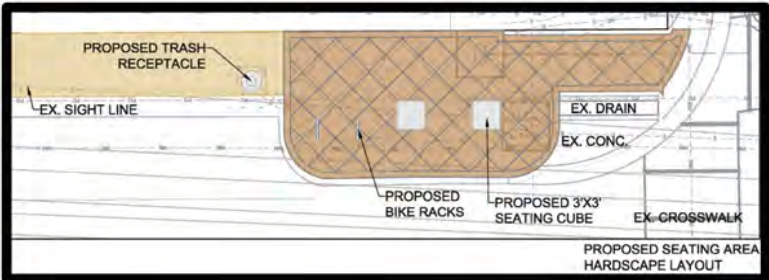
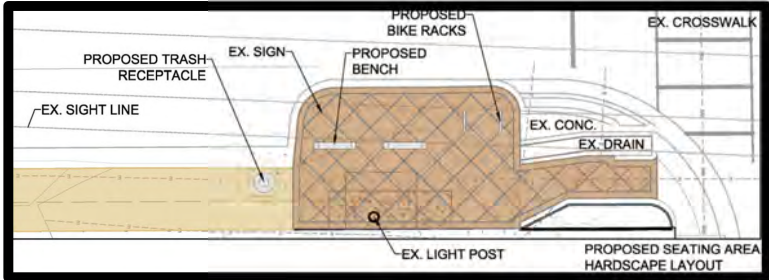
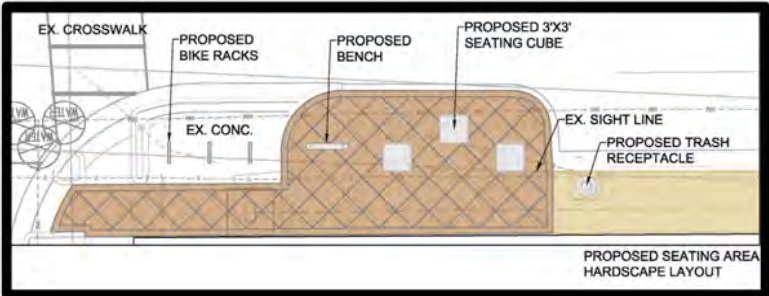
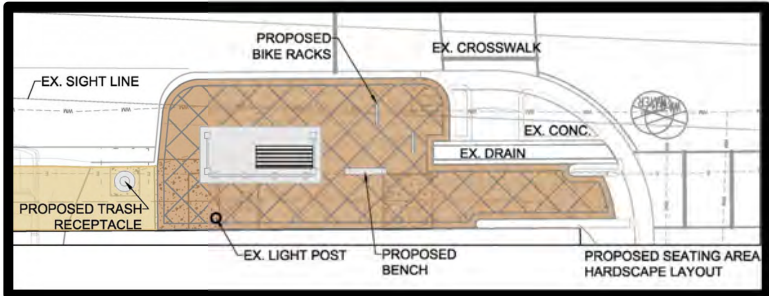
Select 1 pattern preference for field.  
(example: Herringbone)



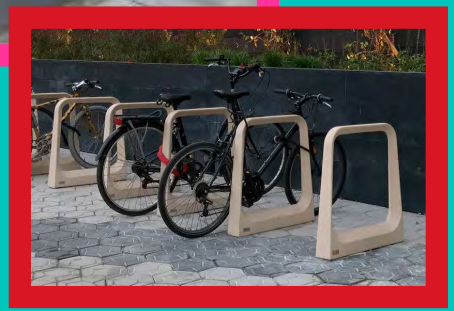
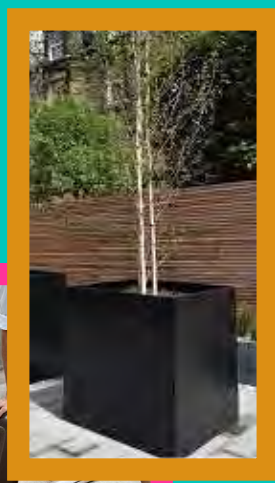
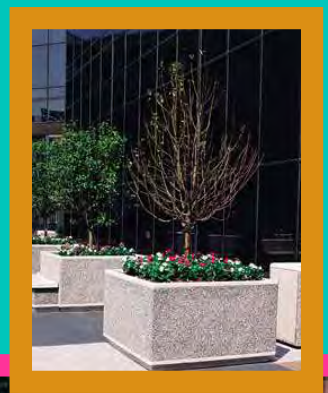
# Proposed Site Furnishing Improvements



## TYPICAL SITE FURNISHINGS LAYOUT



# Furnishing Options



Concrete Options

Metal Options

# Concrete Bench Options

Select ONLY 1  
(Option E or F)

## Option E

Wausau Tile Square  
Concrete Bench  
(1.5' SQ)



COST ± \$85,500  
(72 benches x \$950ea. = \$68,400)  
\$68,400 [25%] = \$85,500

Option E- Preference 1

Select 1 color/finish preference for bench.  
(example: Weatherstone, White)



## Option F

Belson Square  
Concrete Bench  
(3' SQ)

Option F - Preference 1

Select 1 color preference for bench.  
(example: white)

COST ± \$114,750  
(72 benches x \$1,275 ea. = \$91,800)  
\$91,800 [25%] = \$114,750



# Metal Bench Options

Select ONLY 1  
(Option G or H)



## Option G Keystone Ridge Metal Leaning Bench

**COST ± \$101,250**  
(72 benches x \$1,125 ea.) = \$81,000  
\$81,000 [25%] = \$101,250

**Option G – Preference 1**  
Select 1 preference for  
bench color. (example: Charcoal)

### STANDARD KEYSHIELD® COLOR OPTIONS



## Option H LandscapeForms Metal Sitting Rail Bench

**COST ± \$153,900**  
(72 benches x \$1,710 ea.) = \$123,120  
\$123,120 [25%] = \$153,900

**Option H – Preference 1**  
Select 1 preference for  
bench color. (example: White)



### Powdercoated Metal (Gloss)\*



### Powdercoated Metal (Metallic)\*



### Designer Palette Architectural Series (Low Sheen)\*



# Trash Receptacle Options

## Select Preferred Option

*Recommendation is 10 Compacting & 14 Concrete Trash Receptacles*

**COST ± \$43,200**  
 (24 Trash x \$1,140 ea.) = \$34,560  
 \$34,560 [25%] = \$43,200

### Option I

#### Wausau Tile Concrete Trash Receptacle (53 gal)



**Option I – Preference 1**

Select 1 finish preference for trash receptacle color.  
 (example: Finish 21)

**Option I – Preference 2**

Select 1 color preference for lid color.  
 (example: Lid color 14)

Choose Finish: Acid Wash Buff (A21)



Choose Lid Color :



### Option J

#### Ecube Lab Compacting Trash Receptacle (64 gal)

**COST ± \$101,250**  
 (24 Trash x \$6,000 ea.) = \$144,000  
 \$144,000 [25%] = \$180,000



**Option J – Under 20 units color is black.**

**Option J – Preference 2**

Manufacture does offer customized Trash receptacle wraps for additional fee if preferred.  
 (example: 14)

Choose Lid Color :



# Planter Options

Select **ONLY 1**

(Option K or L)

## Option K

**Crowd Control Square  
Concrete Planter**  
(3' SQ)

**COST ± \$23,600**

(16 Planters x \$1,180 ea.) = \$18,880  
\$18,880 [25%] = \$23,600



### Option K – Preference 1

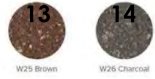
Select 1 color preference for concrete planter.

(example: Charcoal)

#### STANDARD ACID WASH



#### STANDARD WEATHERSTONE



#### STANDARD EXPOSED ROCK

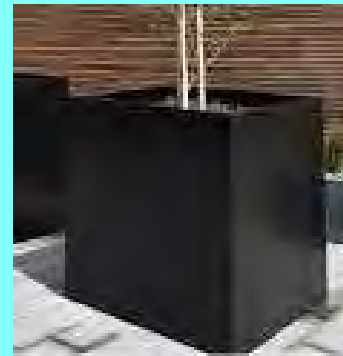


## Option L

**Tournesol Square  
Metal Planter**  
(3' SQ)

**COST ± \$54,300**

(16 Planters x \$2,715 ea.) = \$43,440  
\$43,440 [25%] = \$54,300



### Option L – Preference 1

Select 1 color preference for metal planter.

(example: 24)

#### Standard Colors



#### Weathering Steel

After Natural Patina





# Bike Rack Options

Select ONLY 1  
(Option M or N)

## Option M

Concrete Bike Rack  
(3' SQ)



**COST ± \$63,450**  
 (72 Bike Rack x \$705 ea.) = \$50,760  
 \$50,760 [25%] = \$63,450

**Option M – Preference 1**  
 Select 1 color preference for bike rack.  
 (example: Beige)

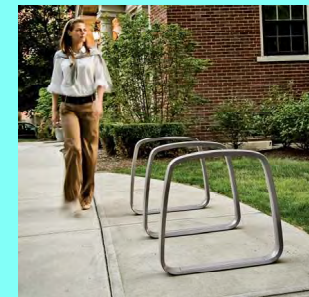
Materials: Etched and waterproofed UHPC Concrete.

Colours:

UHPC GR. Grey	UHPC BL. White	UHPC BG. Beige

## Option N

LandscapeForms  
Metro 40 Bike Rack



**COST ± \$81,000**  
 (72 Bike Rack x \$900 ea.) = \$64,800  
 \$64,800 [25%] = \$81,000



**Option N – Preference 1**  
 Select 1 color preference for bike rack.  
 (example: White)

Powdercoated Metal (Metallic)\*

Bronze	Silver	Steel	Stone	Titanium	Mercury

Powdercoated Metal (Gloss)\*

Black	Blue Bell	Buttercup	Cranberry	Flame Orange	Grass

Designer Palette Architectural Series (Low Sheen)\*

Blue Ash	Dusk	Nutmeg	Obsidian	Onyx	Matte Black

Ivy

Ivy	Ocean	Stormcloud	White

# Additional Amenity Options

Subject to FDOT approval

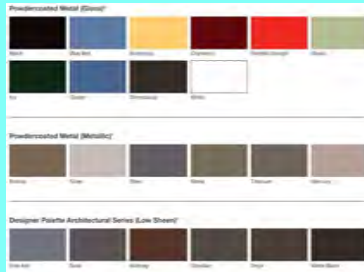
## Structured Shade Systems Select ONLY 1 (Option O or P or Q)



### Option O

Landscape Forms  
Metal Shade (79"  
diameter)

Select 1 color preference  
COST ± \$7,875 each



### Option P

Inmod Tri Corale  
Tensile Sun Shade (60"  
diameter)

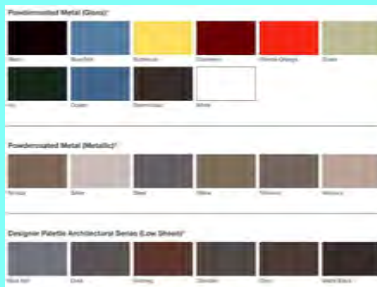
Select 1 color preference  
COST ± \$1,875 each



### Option Q

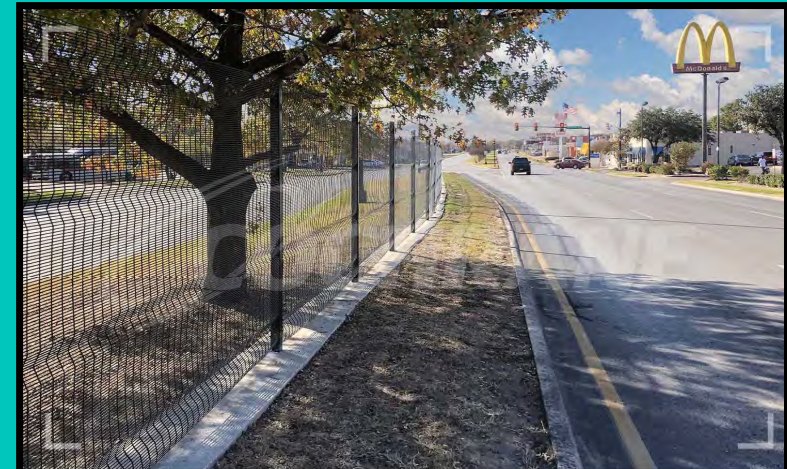
LandscapeForms  
Metal Kaleidoscope  
Open Structure 7'-4" x  
9'-9")

Select 1 color preference  
COST ± \$18,950 each



## Mid-Block Crossing Control Fencing (Option Like or Dislike)

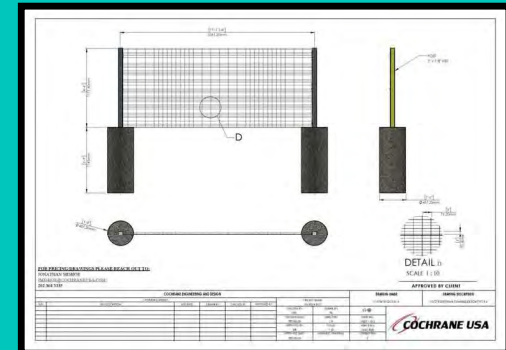
48" High Located within median landscaping



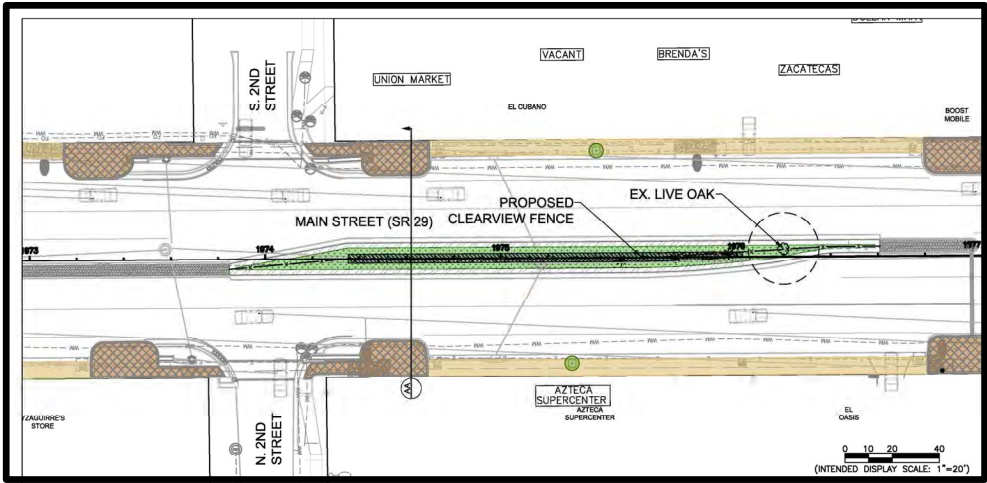
**CLEARVU**  
COCHRANE'S INVISIBLE WALL

**COCHRANE USA**  
cochraneglobal.com



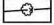

COST ± \$63,400  
(ClearVu Fence \$1,268 LF  
x \$40 LF .) = \$50,720  
\$50,720 [25%] = \$63,400

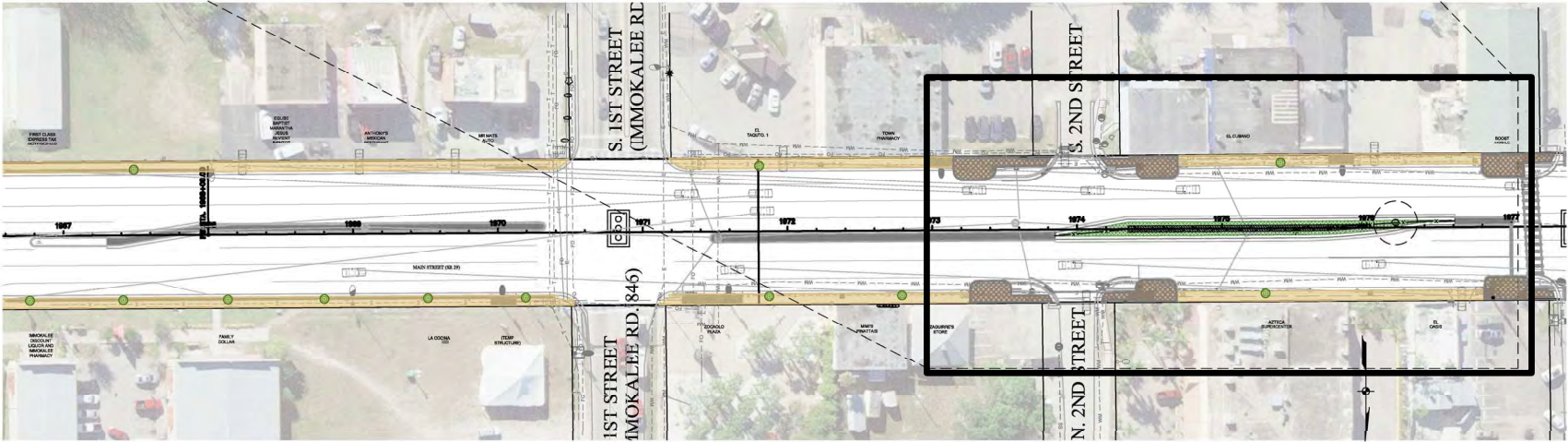


# Landscape Improvements

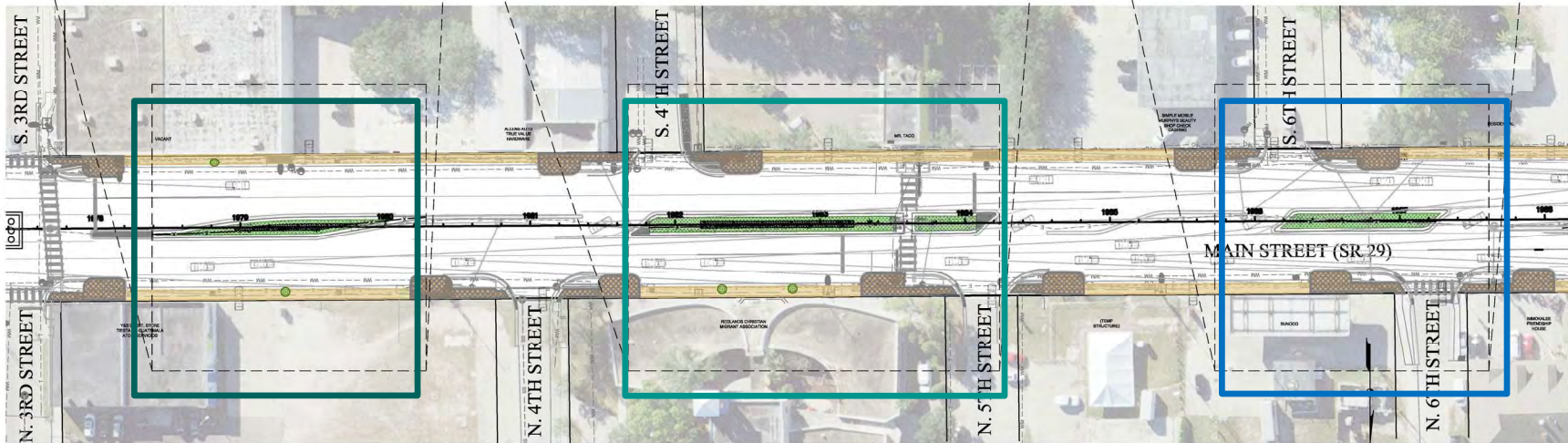
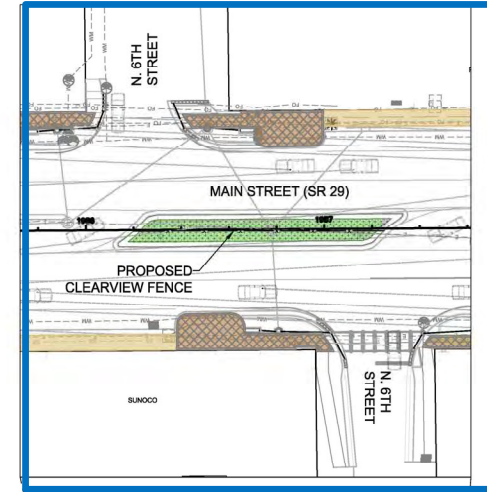
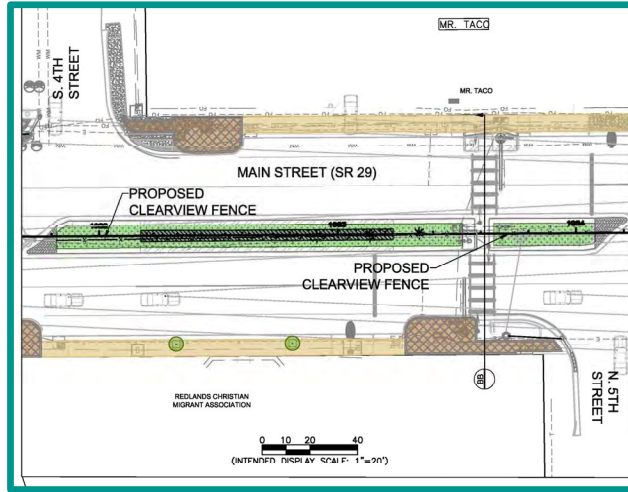
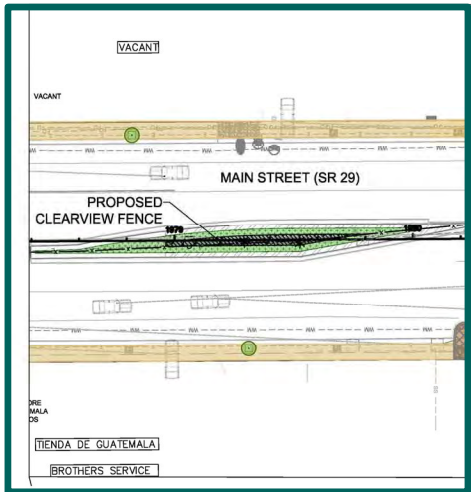


MAIN STREET LANDSCAPE IMPROVEMENTS

-  CLEAR ZONE AREAS
-  GROUNDCOVER AREAS (<18")
-  MEDIUM SHRUB AREAS (>18")
-  PROPOSED PLANTER WITH 8' PALM
-  EXISTING TREES
-  EXISTING PALMS

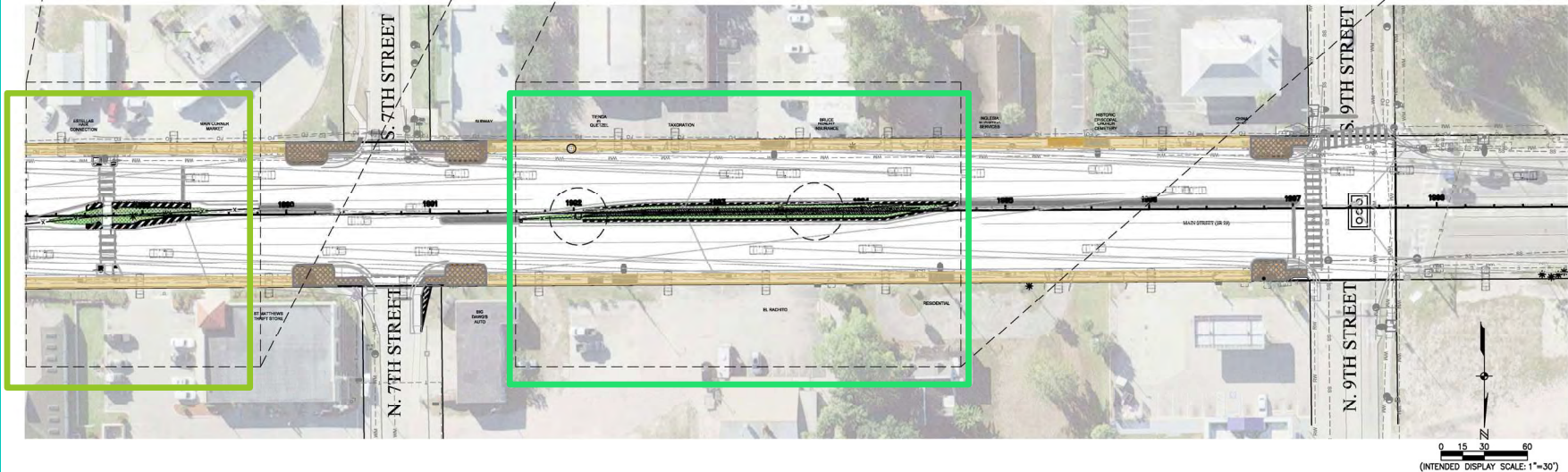
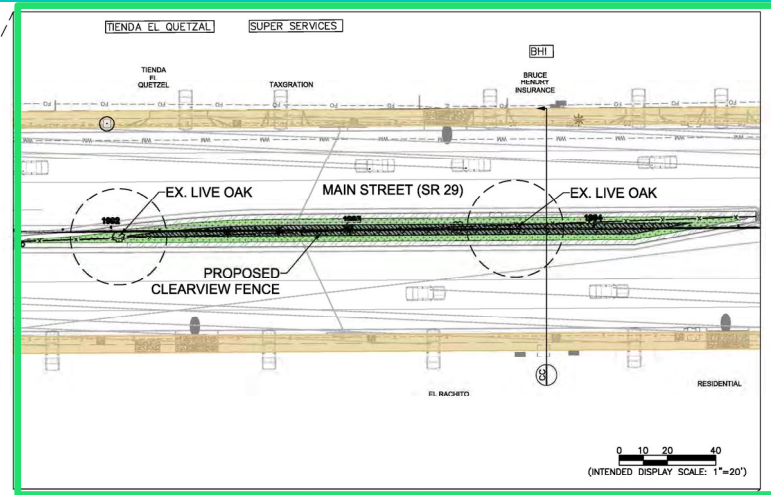
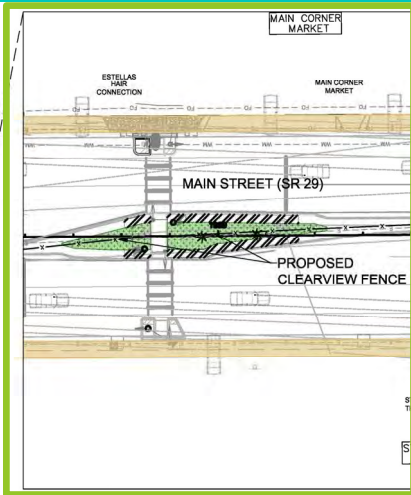


# Landscape Improvements



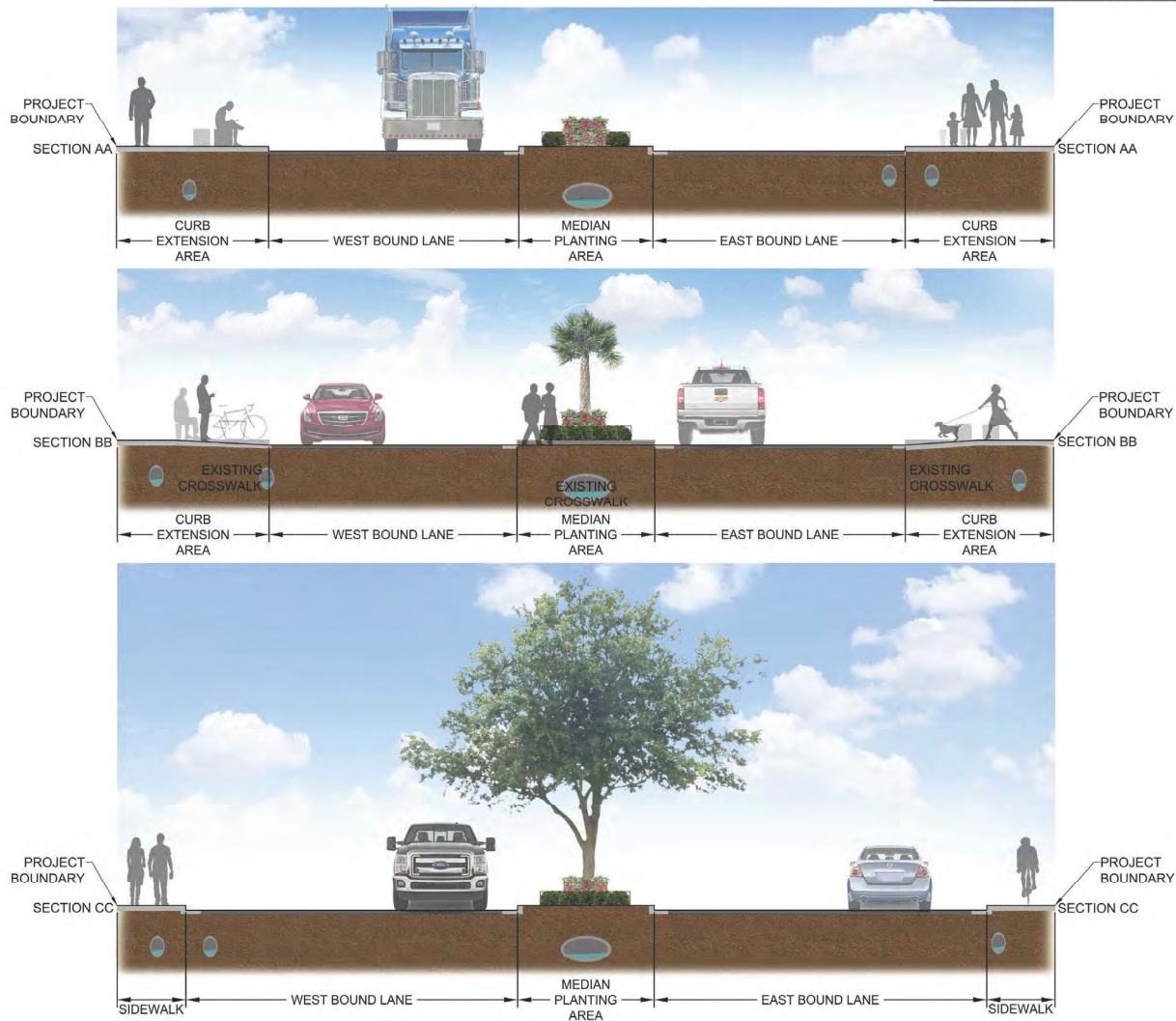
0 15 30 60  
(INTENDED DISPLAY SCALE: 1"=30')

# Landscape Improvements



# Landscape Improvements

TYPICAL PROPOSED LANDSCAPE SECTIONS



# Plant Palette Selection

## Trees/Palms

Rank order of preferences for trees/palms.

COST ± \$375 each



Muskogee Crape Myrtle



Desert Cassia



Pygmy Date Palm

## Large Shrubs

Rank order of preferences for large shrubs.

COST ± \$70 each



Cocoplum



Silver Buffonwood



Clusia



Golden Thryallis



Simpson Stopper

# Plant Palette Selection

## Small Shrubs

Rank order of preference for small shrubs.

COST ± \$30 each



Dwarf Clusia



Carissa



Pink Bougainvillea



Blue Porterweed

## Ornamental Grasses

Rank order of preference for ornamental grasses.

COST +/- \$15 each



Muhly Grass (3' ht.)



White Fountain Grass (3' ht.)



Purple Lovegrass (1' ht.)



Elliott's Lovegrass 1' ht.)

## Groundcover

Rank order of preference for groundcover.

COST ± \$6.00 each



Asiatic Jasmine



Foxtail Fern



Perennial Peanut



# COMMENTS:

---

---

---

---

---

---

---

---

---

---



Thank You for Your Participation!

