

EXHIBITOR PROSPECTUS

25th Annual Southwest Nephrology Conference

MARCH 20-21, 2025

"Precision & Equity in Kidney Care"

Featuring POCUS Course

Scottsdale, AZ | We-Ko-Pa Resort & Conference Center



NATIONAL KIDNEY
FOUNDATION®

of Arizona

CME accredited by:



ABOUT SWNC

The National Kidney Foundation of Arizona invite you to exhibit this Spring at the *Southwest Nephrology Conference*. Held in Phoenix, Arizona, this year's conference will be in-person.

Attended by an average of 300 professionals, the annual conferences offer forward-thinking sessions for **Physicians, Advanced Practitioner, Nurses, Nutritionists, Social Workers, Allied Health Professionals and Intensivists in Nephrology, Transplantation, Cardiology, Endocrinology and Critical Care.**

WHY EXHIBIT?

We are committed to ensuring that the medical community has access to the latest devices and resources to best serve patients. Here are just a few reasons why your company should partner with the Southwest Nephrology Conference.

AUDIENCE

Interact with national and regional professionals in cardiology, nephrology, endocrinology and primary care.

OPPORTUNITY

Your company will have the opportunity to give product demonstrations, conduct market research or even provide a short presentation during an exhibitor spotlight (spotlight not included).

VISIBILITY

Build exposure for your products and services. Exhibitor hall placement near plenary hall and breakout rooms provides more visibility for your brand, product and services. Attendees will be able to see and demo any product right there.

SIMPLE NETWORKING OPPORTUNITIES

This meeting makes networking more accessible with built-in exhibitor hall attendee breaks, raffle prize games that drive traffic to booths, and opportunities for direct conversation while on site.

EFFECTIVE LEAD GENERATION

Speak face-to-face with attendees. You will know exactly who you're speaking with, and how best to follow up with them.

PARTNERSHIP OPPORTUNITIES

TITLE SPONSOR | \$30,000

EXCLUSIVE

- Premium Exhibit Space
- Exhibitor Spotlight slot (1) during session break
- Logo & Title Sponsor Recognition on conference website
- Title sponsor acknowledgement on all print and electronic materials and promotions
- Inside front cover of the Conference Program
- Logo hyperlinked on www.swnephrologyconference.org
- Company collateral in conference bags (up to 3 pieces)
- Full email list of attendees after conference completion
- Branded Conference Bags
- Four (4) complimentary CME registrations
- Complimentary Lead Capture Use (3 users)

KEYNOTE SYMPOSIUM | \$25,000

- Thursday night symposium dinner presentation-exclusive branding
- No competing programming during event
- Premium exhibit space & complimentary lead capture (3 users)
- Full page ad in Conference Program
- Company logo on Conference Sponsor page
- Company material (up to 3 pieces) in conference bag
- Three (3) complimentary CME registrations
- Option to host symposium as branded event or CME-qualifying event (CME cost not included)

INDUSTRY SPONSORED SYMPOSIA | \$15,000

- One hour promotional meal – breakfast or lunch, Thursday or Friday. Non-CME only.
- 45 minute speaker slot
- Exclusive branding for plenary-style meal with listing & logo in Program agenda
- 1/2 page ad in Conference Program
- Company logo on Conference sponsor page
- Company collateral (up to 2 pieces) in conference bag
- Three (3) complimentary CME registrations

PARTNERSHIP OPPORTUNITIES

GOLD LEVEL | \$10,000

- Premium Exhibit Space & exhibitor spotlight slot (1)
- Full email list of attendees after conference completion
- Half page ad in Conference program
- Company logo on conference sponsor page
- Dedicated eblast to pre-registered attendees
- Three (3) complimentary CME registrations

SILVER LEVEL | \$5,000

Package includes exhibit booth (standard), 1/4 page ad in Conference Program, dedicated eblast, company logo on Conference sponsor page, company collateral material (1 piece) in conference bag and two (2) complimentary CME registrations.

MEET THE FACULTY RECEPTION | \$5,000

A great way to network with attendees and faculty! Exclusive branding for cocktail reception. Acknowledgement on Conference Program agenda. 1/4 page ad in Conference Program. Company logo on Conference sponsor page. Two (2) complimentary CME registrations. Dedicated E-blast to Attendees.

EXHIBITOR SPOTLIGHT SESSION | \$2,000

15-minute dedicated spotlight for content promoted during attendee break, with an all-attendee announcement driving traffic to spotlight stage. Exclusive – no competing programs. Company logo on conference sponsor page in Program. Company acknowledgement in Program agenda. *This opportunity is only available in conjunction with a booth presence. Visual display options not included.*

PARTNERSHIP OPPORTUNITIES

DEDICATED E-BLAST TO ATTENDEES | \$1,500

Sent on behalf of the conference to registered attendees pre- or post-event.

BRANDED CONFERENCE BAGS | \$5,000

Company logo on the conference bags provided to all attendees. Exclusive branding. Company collateral (up to 2 pieces) included in bag. Company logo included on Conference sponsor page.

BRANDED NAME BADGES | \$1,500

Company logo on the name badge provided to all attendees. Exclusive branding. Company collateral (up to 2 pieces) included in bag. Company logo included on Conference sponsor page.

OTHER UNIQUE OPPORTUNITIES

Branded Conference Wi-fi NEW!	Company acknowledgement in Conference Program & Signage	\$3,000
Branded Guestroom Key Cards NEW!	Company logo predominately placed on key cards for guest rooms. Fully customizable - work with hotel.	\$2,000
Refresh & Network	Exclusive branding & signage on refreshment stations. Company logo on conference sponsor page in Program. Company acknowledgement in Program agenda. Upgrades available for additional charge.	AM \$2000 PM \$2500

Note- payments completed via credit card will incur the 3% credit card processing fee. Check or money transfer payments are preferred.

Exhibitor Levels

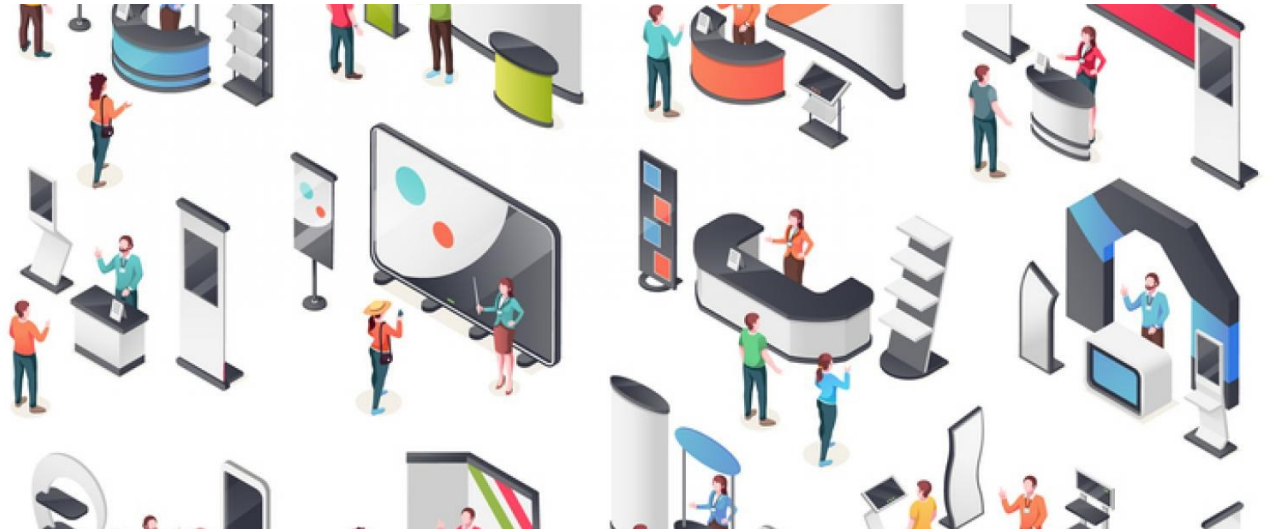


Exhibit Booth Options

Top priority booth placement in Exhibit Hall

Booth size

Dedicated e-blast to registered attendees

Listing in 2024 Conference Program

Logo on Conference Program Sponsor page

Non-CME/CEU badges per booth

Conference Attendee Passes, including CME credits*

Pipe and drape, 1 skirted table, 2 chairs

Quarter (1/4) page ad in Conference Program

Access to Exhibitor Lounge

Premium	Standard
\$4,000	\$2,750
✓	n/a
10' x 10'	6' x 8'
✓	n/a
✓	✓
✓	n/a
2	2
1	n/a
✓	✓
✓	n/a
✓	✓

Exhibit space is assigned based on a priority placement system which factors in past exhibitor participation and sponsorship level. Spaces will be available on a first-come, first-served basis. Start your path to preferential space allocation by securing your spot TODAY!

Breakfast refreshments 7:30 - 9AM and 2 box lunches provided in Exhibitor Lounge. Electricity available for an additional charge— please coordinate during initial registration. **Additional passes available for \$150 each. A Nonprofit rate is available for Standard booths at \$750.00.*

Important Dates & Deadlines



MONDAY, SEPTEMBER 30, 2024

- Exhibit Hall booth placement is open on a priority basis
- Special Early Bird **10%** discount on booth rental if confirmed and paid in full by **October 2, 2023**.

FRIDAY, JANUARY 17, 2025

- **Final payments deadline.** All new Exhibitor applications submitted after this date must be accompanied by payment in full.
- Last day to cancel exhibit space or downsize booth. Cancellation will incur a 50% penalty. After this date all cancellations or downsizes are subject to a 100% fee.

TUESDAY, FEBRUARY 26, 2025

Special group rate for reservations at We-Ko-Pa closes at 5 PM local time.

WEDNESDAY, FEBRUARY 5, 2025

All Conference Program artwork, sponsor logos AND eblast artwork must be submitted by EOD.

WEDNESDAY, MARCH 19, 2025

Booth build-out begins. Setup: Wednesday NOON to 5 PM & Thursday 5:30 AM to 7 AM. Booths must be fully assembled no later than 7 AM Thursday.

FRIDAY, MARCH 8, 2024

Exhibitor booth breakdown may begin NO earlier than 4 PM Friday. **Exhibits that breakdown or are unmanned continuously prior to 4 PM Friday will be subject to penalty.**

CONFERENCE DAYS AND EXHIBITION HOURS:

THURSDAY, MARCH 7, 2024 — 8:00AM-4PM

FRIDAY, MARCH 8, 2024 — 8:00AM-4PM

Exhibitors are expected to have their booths staffed throughout both conference days, as attendees can visit the booths at any time, or during their breaks. There will be dedicated breaks/Exhibitor Hall time in the agenda.



Hotel & Transportation

MEETING LOCATION

The We-Ko-Pa Resort & Conference Center is located in the East Valley of Phoenix, only 25 minutes from Phoenix Sky Harbor International Airport. Developed adjacent to the Fort McDowell Mountains, the location offers close proximity to hiking trails, golf courses, adventure activities in addition to its many resort amenities and multiple dining options.

We-Ko-Pa Resort & Conference Center
10438 N Fort McDowell Rd
Scottsdale, AZ 85264

RESERVATIONS

For hotel reservations, reserve online at:

<https://reservations.travelclick.com/96432?groupID=4348843>

— this link goes directly to our conference reservations page; or call We-Ko-Pa Resort & Conference Center at (480) 789-5302 or toll-free at (844) 493-5672 — reference group SWNCRMC. The group rate is \$209 per night, plus tax. Special rate is valid through **February 26, 2025** at 5 PM local time. Check-In: 4:00pm & Check-Out: 12:00pm (Noon).

Group Amenities for Resort Guests

Special amenities have been negotiated for the Southwest Nephrology Resort guests. These include: complimentary valet & self-parking, complimentary high speed wireless internet in guest rooms and public areas, ten percent (10%) off standard pricing group exclusive at Amethyst Spa and exclusive tee-time discounts for Resort guests at We-Ko-Pa Golf Club.

**REGISTER
TODAY!**

Secure Your Sponsorship Package Today!

When you find the option that makes the most sense for your organization's goals for the event, you can register by contacting us at:

conference@azkidney.org | 877.587.1357

or visit the official event site, at: **www.swnephrologyconference.org**

KEY CONTACTS:

CONFERENCE DIRECTOR

Kristin Nichols

Phone: (602) 845-7903

E-mail: knichols@azkidney.org