

# EXHIBITOR PROSPECTUS

## 26th Annual Southwest Nephrology Conference

**MARCH 12-13, 2026**

*"Serving & Supporting Kidney Patients Throughout Life"*

*Featuring Stand-Alone **POCUS** Course*

**Scottsdale, AZ | We-Ko-Pa Resort & Conference Center**



NATIONAL KIDNEY  
FOUNDATION®

of Arizona

CME accredited by:

**YOUR CEsOURCE**  
CONTINUING EDUCATION FOR LIFE

# ABOUT SWNC

The National Kidney Foundation of Arizona invites you to exhibit this Spring at the *Southwest Nephrology Conference*. Held in-person in Scottsdale, Arizona.

Attended by an average of 300 professionals, the annual conferences offer forward-thinking sessions for **Physicians, Advanced Practitioner, Nurses, Nutritionists, Social Workers, Allied Health Professionals and Intensivists in Nephrology, Transplantation, Cardiology, Endocrinology and Critical Care.**

---

## WHY EXHIBIT?

**We are committed to ensuring that the medical community has access to the latest devices and resources to best serve patients. Here are just a few reasons why your company should partner with the Southwest Nephrology Conference.**

### AUDIENCE

Interact with national and regional professionals in cardiology, nephrology, endocrinology and primary care.

### OPPORTUNITY

Your company will have the opportunity to give product demonstrations, conduct market research or even provide a short presentation during an exhibitor spotlight (spotlight not included).

### VISIBILITY

Build exposure for your products and services. Exhibitor hall placement near plenary hall and breakout rooms provides more visibility for your brand, product and services. Attendees will be able to see and demo any product right there.

### SIMPLE NETWORKING OPPORTUNITIES

This meeting makes networking more accessible with built-in exhibitor hall attendee breaks, raffle prize games that drive traffic to booths, and opportunities for direct conversation while on site.

### EFFECTIVE LEAD GENERATION

Speak face-to-face with attendees. You will know exactly who you're speaking with, and how best to follow up with them.



# PARTNERSHIP OPPORTUNITIES

## TITLE SPONSOR | \$30,000

EXCLUSIVE

- Premium Exhibit Space
- Exhibitor Spotlight slot (1) during session break
- Logo & Title Sponsor Recognition on conference website
- Title sponsor acknowledgement on all print and electronic materials and promotions
- Inside front cover of the Conference Program
- Logo hyperlinked on [www.swnephrologyconference.org](http://www.swnephrologyconference.org)
- Company collateral in conference bags (up to 3 pieces)
- Full email list of attendees after conference completion
- Branded Conference Bags
- Four (4) complimentary CME registrations
- Complimentary dedicated e-blast

## KEYNOTE SYMPOSIUM | \$28,000

- Thursday night exclusive symposium dinner presentation & branding
- No competing programming during event
- Premium exhibit space & complimentary dedicated e-blast
- Full page ad in Conference Program
- Company logo on Conference Sponsor page
- Company material (up to 3 pieces) in conference bag
- Three (3) complimentary CME registrations
- Option to host symposium as branded event or CME-qualifying event (CME cost not included)

## INDUSTRY SPONSORED SYMPOSIA \$15,000 BREAKFAST | \$17,500 LUNCH

- One-hour promotional meal – Thursday or Friday. Non-CME only.
- 45-minute speaker slot
- Exclusive branding for plenary-style meal with listing & logo in Program agenda
- 1/2 page ad in Conference Program
- Company logo on Conference sponsor page
- Company collateral (up to 2 pieces) in conference bag
- Three (3) complimentary CME registrations



# PARTNERSHIP OPPORTUNITIES

**NEW!**

## BARISTA EXHIBITOR SPOTLIGHT | \$10,000

- **Exclusive** – no competing programs.
- **30-minute** dedicated spotlight session for content promoted during attendee break.
- **Barista espresso cart** for all attendees
- All-attendee announcement driving traffic to spotlight stage in expo hall.
- 1/2 page ad in Conference program
- Company acknowledgement in agenda- online & printed, logo on sponsor page in printed Program
- Dedicated eblast to pre-registered attendees
- Two (2) complimentary CME registrations
- Expo-hall stage, branded sign, and AV: microphone and speaker, 75" display monitor.

*This opportunity is only available in conjunction with a purchased booth presence.*



## GOLD LEVEL | \$10,000

- Premium Exhibit Space & Spotlight slot (1)
- Full email list of attendees post conference
- Half page ad in Conference program
- Company logo on conference sponsor page
- Dedicated eblast to pre-registered attendees
- Three (3) complimentary CME registrations

## SILVER LEVEL | \$5,000

- Exhibit booth (standard)
- 1/4 page ad in Conference Program
- Dedicated eblast to pre-registered attendees
- Company logo on Conference sponsor page
- Collateral material (1 piece) in conference bag
- Two (2) complimentary CME registrations

## MEET THE FACULTY RECEPTION | \$5,000

- Exclusive branding for cocktail reception
- Network with attendees and faculty
- Acknowledgement on Program agenda
- 1/4 page ad in Conference Program
- Company logo on Conference sponsor page
- Two (2) complimentary CME registrations
- Dedicated E-blast to pre-registered attendees



# PARTNERSHIP OPPORTUNITIES

## DEDICATED E-BLAST TO ATTENDEES | \$1,500

Sent on behalf of the conference to registered attendees pre – or post – event.

## BRANDED CONFERENCE BAGS | \$5,000

Company logo on the conference bags provided to all attendees. Exclusive branding. Company collateral (up to 2 pieces) included in bag. Company logo included on Conference sponsor page.

## BRANDED NAME BADGES | \$1,500

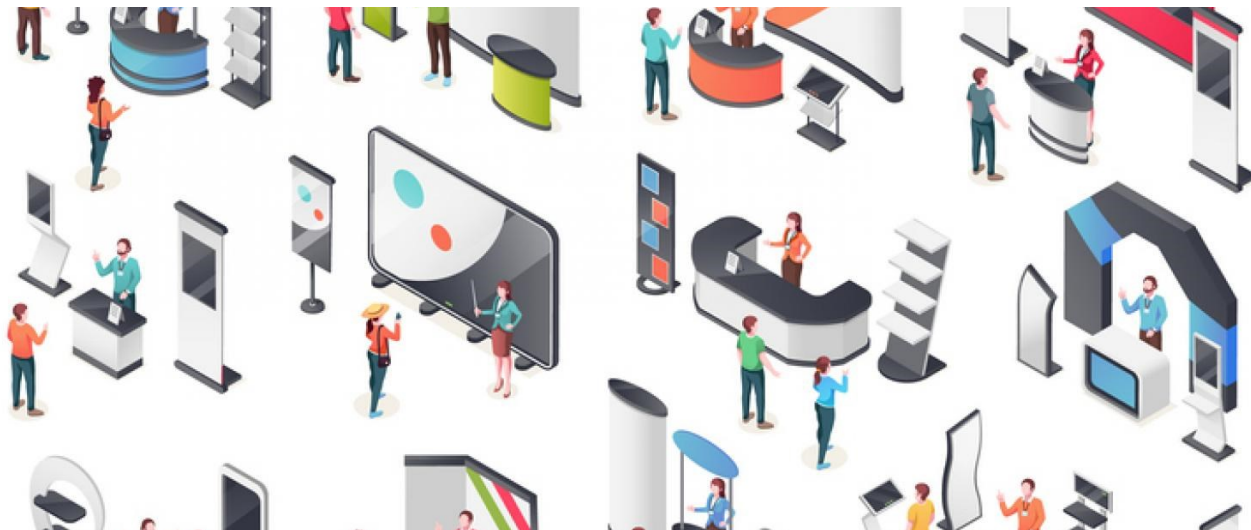
Company logo on the name badge provided to all attendees. Exclusive branding. Company collateral (up to 2 pieces) included in bag. Company logo included on Conference sponsor page.

## OTHER UNIQUE OPPORTUNITIES

<b>Branded Conference Wi-fi</b>	Company acknowledgement in Conference Program & Signage	\$3,000
<b>Exhibitor Spotlight Session</b>	15-minute dedicated spotlight for content promoted during attendee break. Exclusive – no competing programs. Company logo on conference sponsor page in Program and acknowledgement in agenda. <i>This opportunity is only available in conjunction with a booth presence. Visual display options not included.</i>	\$2,000
<b>Refresh &amp; Network</b>	Exclusive branding & signage on refreshment stations. Company logo on conference sponsor page in Program. Company acknowledgement in Program agenda. Upgrades available for additional charge.	AM \$2000 PM \$2500

***Note- payments completed via credit card will incur the 3% credit card processing fee. Check or money transfer payments are preferred.***

# Exhibitor Levels



## Exhibit Booth Options

Top priority booth placement in Exhibit Hall

Booth size

Dedicated e-blast to registered attendees

Listing in 2026 Conference Program

Logo on Conference Program Sponsor page

Non-CME/CEU badges per booth

Conference Attendee Passes, including CME credits\*

Pipe and drape, 1 skirted table, 2 chairs

Quarter (1/4) page ad in Conference Program

Access to Exhibitor Lounge

Premium	Standard
\$4,000	\$2,750
✓	n/a
10' x 10'	6' x 8'
✓	n/a
✓	✓
✓	n/a
2	2
1	n/a
✓	✓
✓	n/a
✓	✓

Exhibit space is assigned based on a priority placement system which factors in past exhibitor participation and sponsorship level. Spaces will be available on a first-come, first-served basis. Start your path to preferential space allocation by securing your spot TODAY!

Breakfast refreshments 7:30 - 9AM and 2 box lunches provided in Exhibitor Lounge. Electricity available for an additional charge— please coordinate during initial registration. *\*Additional passes available for \$150 each. A Nonprofit rate is available for Standard booths at \$750.00.*

## Important Dates & Deadlines



### MONDAY, JULY 28, 2025

- Exhibit Hall booth placement is open on a priority basis.

### FRIDAY, JANUARY 2, 2026

- **Final payments deadline.** All new Exhibitor registrations submitted after this date must be accompanied by payment in full.
- Last day to cancel exhibit space or downsize booth. Cancellation will incur a 50% penalty. After this date all cancellations or downsizes are subject to a 100% fee.

### TUESDAY, FEBRUARY 20, 2026

Special group rate for reservations at We-Ko-Pa closes at 5PM local time.

### WEDNESDAY, FEBRUARY 4, 2026

All Conference Program artwork, sponsor logos AND eblast artwork must be submitted by EOD.

### WEDNESDAY, MARCH 11, 2026

Booth build-out begins. Setup: Wednesday NOON to 5PM & Thursday 5:30AM to 7AM. Booths must be fully assembled no later than 7AM Thursday.

### FRIDAY, MARCH 13, 2026

Exhibitor booth breakdown may begin NO earlier than 4PM Friday. **Exhibits that breakdown or are unmanned continuously prior to 4PM Friday will be subject to penalty.**

## CONFERENCE DAYS AND EXHIBITION HOURS:

**THURSDAY, MARCH 12, 2026 — 8:00AM-4PM**

**FRIDAY, MARCH 13, 2026 — 8:00AM-4PM**

Exhibitors are expected to have their booths staffed throughout both conference days, as attendees can visit the booths at any time, or during their breaks. There will be dedicated breaks/Exhibitor Hall time in the agenda.





## Hotel & Transportation

### MEETING LOCATION

The We-Ko-Pa Resort & Conference Center is located in the East Valley of Phoenix, only 25 minutes from Phoenix Sky Harbor International Airport. Developed adjacent to the Fort McDowell Mountains, the location offers close proximity to hiking trails, golf courses, adventure activities in addition to its many resort amenities and multiple dining options.

**We-Ko-Pa Resort & Conference Center**  
**10438 N Fort McDowell Rd**  
**Scottsdale, AZ 85264**

### RESERVATIONS

For hotel reservations, reserve online at: <https://book.rguest.com/wbe/group/2093/wekopacasinoresort/auth> — this link goes directly to our conference reservations page, use Group Code: BKG573 & Password: SOUTHWEST; or call We-Ko-Pa Resort & Conference Center at (480) 789-5302 or toll-free at (844) 493-5672 — reference group SWNCRMC. The group rate is \$219 per night, plus tax. Resort fee waived. Special rate is valid through **February 20, 2026**, at 5 PM local time. Check-In: 4:00PM & Check-Out: 12:00PM (Noon).

### Group Amenities for Resort Guests

Special amenities have been negotiated for the Southwest Nephrology Resort guests. These include: complimentary valet & self- parking, complimentary high speed wireless internet in guest rooms and public areas, ten percent (10%) off standard pricing group exclusive at Amethyst Spa and exclusive tee-time discounts for Resort guests at We-Ko-Pa Golf Club.



**REGISTER  
TODAY!**

**Secure Your Sponsorship Package Today!**

When you find the option that makes the most sense for your organization's goals for the event, you can register by contacting us at:

**conference@azkidney.org | 877.587.1357**

or sign up directly by visiting the official event site at: **www.swnephrologyconference.org**

**KEY CONTACTS:**

CONFERENCE DIRECTOR

***Kristin Nichols***

*Professional Education Manager*

Phone: (602) 845-7903

E-mail: knichols@azkidney.org



**NATIONAL KIDNEY  
FOUNDATION®**

of Arizona