

REMI Music Camp At Lakefield College



Lakefield College School Campus

Lakefield, Ontario, Canada

July 15-19, 2024

Presented by the Roy Ernst Music Institute

Co-Directors Roy Ernst and Dan Kapp



DR. ROY ERNST

Dr. Roy Ernst, a distinguished figure in the field of music education, dedicated 25 years to teaching at the Eastman School of Music. In 1991, he initiated the first New Horizons Band at Eastman, a groundbreaking program emphasizing entry and reentry points to music-making for older adults, fostering a vibrant community of musicians.

Dr. Ernst's vision extended beyond Eastman. He became the founding director of the New Horizons Music Project, funded by the National Association of Music Merchants and the National Association of Band Instrument Manufacturers. Through this initiative, he facilitated the establishment of over 200 similar programs across the United States and Canada, empowering older adults to engage with music.

Dr. Ernst's accolades include the President's Arts Achievement Award from Wayne State University, Outstanding Educator Award from the Rochester Philharmonic Orchestra, and an honorary doctorate from Western University in Ontario, Canada. He was also recognized as a Grand Master of Music Education by the National Association for Music Education (formerly MENC).

ROY ERNST MUSIC INSTITUTE (REMI)

In 2022, Dr. Ernst aspired to create a more expansive platform for older music enthusiasts. Thus, the **Roy Ernst Music Institute (REMI)** was born—a beacon for enriching musical experiences.

REMI proudly orchestrates a series of Music Camps each year set against the breathtaking backdrop of some of North America's most beautiful locations. These camps offer participants a unique opportunity to learn, collaborate, and fully immerse themselves in music.

Dr. Ernst, a firm believer in the transformative and healing power of music, has dedicated himself to bringing that power to all. His vision and focus has recently come to honouring and embracing our veterans through the medium of music.

Notably, he played a pivotal role in founding Armed Services Veterans Bands in San Antonio, Texas and the Armed Services Veterans Band at The University of South Carolina. These remarkable ensembles unite proud veterans from the Army, Marine Corps, Navy, and Air Force. Their shared passion for music serves as a bridge, connecting their experiences and fostering camaraderie. Their many public performances have brought delight to many in their communities, creating a sense of unity that resonates with both the veterans themselves and the audiences they touch. Dr. Ernst continues to intertwine music, community, and gratitude and looks forward to meeting you personally at the REMI Music Camp at Lakefield.



Lakefield, Ontario



Lakefield, Ontario, approximately 150 kilometers (93 miles) northeast of Toronto is nestled in the heart of the picturesque Kawartha Lakes region. The town harmoniously blends history, education, nature, creativity, and culinary delights—a gem waiting to be explored!

Lakefield’s downtown area is a treasure trove of history. Victorian-era buildings line the streets, evoking a sense of nostalgia. Take a leisurely stroll, admire the architecture, and immerse yourself in the quaint ambiance.

Nature enthusiasts will revel in Lakefield’s proximity to pristine lakes, lush forests, and scenic trails. Katchewanooka Lake, one of the largest lakes in the region, invites boating, fishing, and swimming and the nearby Warsaw Caves Conservation Area offers limestone caves, hiking trails, and breathtaking lookouts, the region is an outdoor adventurer’s paradise.

Lakefield thrives on its vibrant arts scene. Galleries, studios, and cultural events dot the calendar throughout the year. Foodies can indulge in the village’s restaurants, cafes, and bakeries which have something to satisfy every palate.

Lakefield College School



Lakefield College School (a 5 minute drive from downtown Lakefield and 20 minutes from the City of Peterborough) is situated amidst the serene landscape of rural Ontario and boasts a sprawling 155 acre campus that harmoniously blends natural beauty with modern facilities. Nestled alongside Lake Katchewanooka, its grounds offer campers ample opportunities for outdoor exploration, fostering a unique educational experience in a picturesque setting.

[Virtual Tour of Lakefield College School \(click here!\)](#)

For more information on accommodation and facilities see below.

CLASSES

BANDS

Advanced Band - Co-Directors: Ken Carper and Shawn Hills.

The advanced band is for people who like challenging music. In this band you will be playing music at approximately 2.5 to 3.5 grade level.

Intermediate Band - Co-Directors: Lynda Shewchuk and Debbie Parker.

The intermediate band is for people who enjoy a variety of music at a comfortable level. In this band you will be playing music at approximately 1.5 to 2.5 grade level.

Unsure of which band to select?

If you are unsure and would like some help, send a list of 5 or 6 band pieces or lesson pieces that you can comfortably play to Roy at: royernst1@gmail.com

SMALL ENSEMBLES



Brass Ensemble (Dan Kapp) - This is an all-level group for all brass instruments playing a variety of music at a comfortable level.

Introduction to Big Band (Pat Wheeler) - This class will provide students with an introduction to playing Big Band music, learning the rhythmic characteristics and performance techniques necessary to emulate the style established by the North American dance bands of the 1930-1970s. All instruments are welcome, including drum kit, bass, guitar, and piano.

Big Band (Pat Wheeler) - The REMI Music Camp "Big Band" will play music characteristic of the dance bands of the 1930s-1970s. Traditional big band wind instrumentation (saxes, trumpets, trombones, drum kit, bass, guitar, and piano). Ensemble playing and producing the rhythmic characteristics of the genre will be the focus of this class for those with some experience in the idiom playing at an advanced level.

Flute Choir (Lynda Shewchuk) - This is an all-level group that will play a variety of music for flutes.

German Band (Dan Kapp) - Get ready for Oktoberfest, let's Oompah! The music used in this band is for expanded instrumentation, including flutes, alto sax, tenor sax, horns and accordions in addition to the usual instrumentation of clarinets, trumpets, euphonium, trombone, tuba and drums.

Percussion Ensemble (Stewart Hoffman) - This is an all-level group that will play a variety of music for percussion instruments.

Sax Ensemble (Shawn Hills) - This is an all-level group that will play a variety of music for saxophones.

Woodwind Ensemble (Debbie Parker) - This is an all-level group for flutes, clarinets, and double reeds playing a variety of music at a comfortable level .



SPECIAL INTEREST CLASSES

Brass Warm Ups (Dan Kapp) - Join Dan as he runs his warm up routine. Open to all brass players at any level.

Bucket Band (Stewart Hoffman) - Yep, it is what it sounds like, making music on buckets. No experience necessary. Open to all participants with percussionists receiving priority.

East Coast Line Dancing! (Lisa Kapp) - Line dancing isn't just for cowboys anymore! Designed to complement the "Kitchen Party" we will move to toe-tapping East Coast tunes. Wear comfy clothes and pack your sense of humor. Let's dance like nobody's watching—no cowboy boots required!

Free Time - Like it says...free!

Introduction to Film Music (Pat Wheeler) - This course explores the relationship between music and film, the functions, and effects of music and how it supports or plays against the visual images, and how a film composer designs a score to synchronize with the activity on-screen.

Kitchen Party (Chris Devlin, Graham Taylor, and Lisa Kapp) - In the spirit of a traditional East Coast "Kitchen Party" sing, play, dance and laugh the night away with Chris, Graham and Lisa on Thursday night. Bring your noise makers, ugly sticks, spoons, whistles, and your dancing shoes! Snacks will be served.

Melodic Creativity (Roy Ernst) - Learn how to play songs in your own creative way by embellishing melodies and changing rhythms. Learn to use accompaniment programs that can add enjoyment to your playing.

Music Theory for Intermediate Band (Roy Ernst) - We will analyze one or more compositions being played by the Intermediate Band at this camp. We will start with the largest features, such as form, and move to smaller features, such as tonality, modulations, motives, and sequences. The intended feeling (aesthetics) of each composition will be discussed. You will then be able to apply what you are learning when you play the pieces.

Music Theory for Advanced Band (Roy Ernst) - We will analyze one or more compositions being played by the Intermediate Band at this camp. We will start with the largest features, such as form, and move to smaller features, such as tonality, modulations, motives, and sequences. The intended feeling (aesthetics) of each composition will be discussed. You will then be able to apply what you are learning when you play the pieces.

Recorder - Beginner/Intermediate (Peter Sudbury) - Learn to play or improve your skills on the soprano or tenor recorder. You will be playing a variety of music on this often underappreciated instrument.

Sing-Along - Join Ken and Carol for a ukulele sing-along after dinner. Ukulele players are welcome to join.

Tin Whistle (Taylor Graham and Chris Devlin) - Learn to play or improve your skills on the D tin whistle (these are available at your local music store). You will be playing different types of Celtic and East Coast music and starting some ornamentation.

Ukulele – Intermediate (Ken Carper) - For this class it is good to be comfortable changing to/from a number of chords (F, C, C7, G, G7, etc.) on soprano, concert or tenor ukes. Players should be comfortable reading ukulele chord symbols. A guitar and/or bass guitar (or bass ukulele) can be included in the class, but the chord symbols will be given only for soprano uke tuning (GCEA). Being willing to sing along adds to the fun but is not required.



How many classes should I take?

Playing your instrument too long each day can lead to muscle soreness and fatigue for most people.

Think of three or four classes as a full load and consider taking some classes in which you will not play your band instrument such as Ukulele, Tin Whistle, Bucket Band, Music Theory, or Line Dancing. Some participants leave one or two periods free for rest and just walking around to enjoy the beautiful grounds or town which is nearby.

About Your Camp Directors: Roy



Roy Ernst (Dunedin, FL), affectionately known as the “Johnny Appleseed of Music for Adults,” is the visionary behind the New Horizons Band program, which he initiated at the Eastman School of Music, Rochester, NY, in 1991.

His innovative approach to adult music education has garnered support from the National Association of Music Merchants and spawned similar programs globally. Roy’s scholarly pursuits led him to a Ph.D. from the University of Michigan, and his expertise in music education, conducting, and performance is well-documented through his numerous articles and books.

Recognized by the National Association for Music Education (formerly MENC) and other prestigious institutions, Roy’s influence extends to various teaching roles across the globe. When the music fades, Roy’s personal time harmonizes with learning new instruments, enjoying outdoor activities, and supporting his chef wife, Pat, with a symphony of dishwashing.

Classes: Music Theory - Adv. Band, Music Theory - Int. Band, Melodic Creativity

About Your Camp Directors: Dan



Dan Kapp (Baltimore, ON), a York University alumnus with degrees in Fine Arts (Hons. in Performance) and Education, has orchestrated a 40-year career that spans performance, teaching, and conducting. His leadership as Musical Director/Conductor has resonated through schools and communities, crossing borders from Canada to Latin America to Istanbul, Turkey.

In 2010, Dan established the New Horizons Band of Toronto, nurturing it from a modest ensemble to a thriving community with numerous ensembles of various levels and genres. His passion for music education also plays out at REMI, where he proudly co-directs with his esteemed colleague, Dr. Roy Ernst.

Dan's life is a composition of musical pursuits (conducting, performance, arranging and composition) as well as developing his love of gardening, birding and woodturning.

Classes: Brass Warm-Ups, Brass Ensemble, German Band



About Your Camp Faculty



Ken Carper (Naples, FL) began his musical journey on trumpet at Berklee College of Music where he mastered in jazz only to realize its challenging financial tune. He then studied classical repertoire under Roy Ernst at Eastman School of Music during summer interludes. The pursuit of diverse world music styles led him to a Ph.D. from the University of Hawaii after which he became a teacher.

Retired from teaching, Ken now conducts the New Horizons Band in Naples, FL with the same fervor he once held for playing trumpet.

Offstage, Ken dedicates time to Habitat for Humanity, harmonizing his love for music with a commitment to community service.

Classes: Adv. Band, Int. Ukulele, Sing-A-Longs

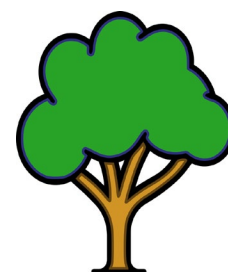


Chris Devlin's (Cobourg, ON) family may have traded Belfast for the charm of Cobourg in the 1970s, but those Irish roots have woven themselves into the very fabric of his music and songwriting.

Chris is one of the creatives behind Madman's Window, an acclaimed Folk band that has played pubs and festivals from Toronto to Newfoundland. He also performs as a solo act, his guitar becoming an extension of his soul. In a dimly lit pub or an open-air festival, Chris knows how to connect with a crowd and has graced stages at the Ontario Pirate Festival, the Cobourg Waterfront Festival, and the George Street Festival in St. John's, Nfld.

In 2022, Cobourg recognized Chris's artistic contributions with a prestigious honor. It's like a standing ovation from the town itself.

Classes: Tin Whistle, Kitchen Party





Shawn Hills (Bowmanville, ON) earned her Honours Bachelor of Music and Bachelor of Education from Western University, then embarked on an amazing musical adventure. She studied clarinet under the tutelage of Jerome Summers and Avrahm Galper and learned conducting skills from maestros Don McKellar, Jerome Summers, and Deral Johnson.

For three decades she graced the music classrooms of the Kawartha Pine Ridge Board of Education, igniting a love of music in her students' hearts.

Shawn's baton has led the Clarington Concert Band, the Lakeshore New Horizons Band in Bowmanville, the Laurier Wind Ensemble and she is currently guiding the Northumberland New Ventures Avanti Band in Cobourg.

Classes: Adv. Band, Mixed Level Woodwind Ensemble, Clarinet Ensemble

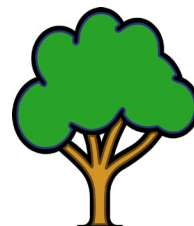


Stewart Hoffman (Toronto, ON) studied with vibraphonist David Friedman in New York City and Elden C. "Buster" Bailey at Juilliard where he earned his Bachelor and Master's Degrees in Percussion.

Stewart has taught drums, percussion, and jazz vibraphone throughout his career, and for 18 years taught at Toronto's Crescent School. A Toronto-based percussionist, Stewart has performed with the Toronto Symphony Orchestra, the Canadian Opera Company, Stratford Festival and recorded for CBC radio and television. Internationally, he has performed with Orquesta Sinfónica de Maracaibo (Venezuela) and the orchestra of Festival dei Due Mondi (Italy).

A dedicated educator, Stewart's *The Band Teacher's Percussion Guide*, was published in 2017 and his articles on music and the arts have appeared in leading periodicals including the National Post, Toronto Life, Performance Magazine, and publications for Roy Thomson Hall and the Toronto Symphony.

Classes: Band Percussion Coach, Bucket Band, Percussion Ensemble





Lisa Kapp (Baltimore, ON), a retired high school English/Dramatic Arts teacher, has a rich teaching career spanning 30 years. Her journey includes teaching in public and private schools in Ontario and Turkey. Lisa's retirement is filled with diverse interests including reading, gardening, learning golf and hooking (yep – ask her about it!).

Lisa's vibrant personality shines through her involvement in the arts. Despite her background as a flute player, she gravitates toward the bells and whistles of the percussion section. Lisa's creative passion extends to community theater where she actively participates in several roles including actor, singer, choreographer, director, and member, most recently with the Northumberland Players.

Along with leading a couple workshops, Lisa will be working in the background to help ensure things run smoothly and everyone has a rewarding camp experience.

Classes: Kitchen Party, East-Coast Line Dancing

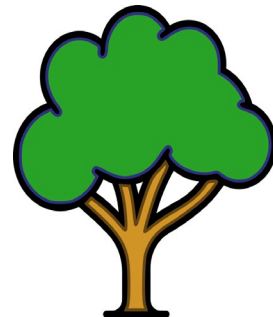


Debbie Parker (Fairport, NY) is a retired instrumental music teacher and band director. She has worked with Eastman School of Music's New Horizons Groups with an annual intergenerational program for 27 years and recently completed 3 years as a full-time staff member.

Debbie loves to play the flute in regional orchestras and with her woodwind quintet, Quintessence. She has worked in the flute industry and loves to match up players of all levels with new instruments.

When she is not home with her husband Todd and their whackadoodle, Ruby, she can be found rowing on the Genesee River with the Genesee Rowing Club.

Classes: Int. Band, Sax Ensemble, Flute Choir





Lynda Shewchuk (Bowmanville, ON), armed with her Bachelor of Music and Bachelor of Education from Western University, has become a well-known name in the music community in the Bowmanville area.

Lynda wears many hats in the world of music. Twenty years ago, she embarked on a musical odyssey with Lakeshore New Horizons in Bowmanville, a venture that remains close to her heart and continues to thrive today. She also serves as Associate Director of Music for the Clarington Concert Band, created the Wildwood Flute Choir, directs Toot Sweet, and coaches for La Jeunesse Youth Orchestra.

An accomplished flautist, Lynda has played with several local ensembles including the Oshawa Symphony, the Concert Band of Cobourg and Bach Porch Trio. And let's not forget her seat in "the pit", during musicals with the Oshawa Little Theatre.

Classes: Int. Band, Mixed Level Woodwind Ensemble, Flute Choir

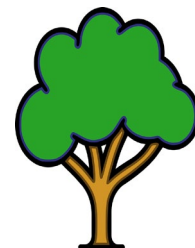


Peter Sudbury (Peterborough, ON), a graduate of York University, studied under hornist James MacDonald and bassoonist James MacKay. He diverted to arts administration becoming Director of the Performing Arts Office at Queen's University bringing renowned artists as hornist Hermann Baumann, Emma Kirkby, and The Royal Winnipeg Ballet to Kingston stages. He was also a Juror for the Juno Awards and the Ontario Arts Council.

Later, Peter served his community on the boards of the Peterborough Symphony and the Peterborough Concert Association, taught elementary school, conducted the Peterborough Concert Band and a variety of community theatre musicals. As the first General Manager of Showplace Peterborough, he opened and managed the theatre, programming concerts by acclaimed artists as Michael Burgess and Blue Rodeo.

Peter is rarely home because he is busy making music and sharing his expertise with others.

Classes: Recorder - Beg/Int.





Graham Taylor (Cobourg, ON) holds an Honours BA (University of Guelph) and a B.Ed. (Queen's University) and is guided by a steadfast belief in the transformative power of music. A seasoned multi-instrumentalist and passionate educator, Graham has been immersed in the world of music for over 35 years. As a former public school teacher and lifelong musician, his virtuosity shines through the strings of the violin, fiddle, mandolin, ukulele, and guitar as well as on trumpet, sax, and tin whistle.

By day, Graham teaches privately and as an occasional teacher for the Kawartha Pine Ridge Board of Education. By night, he can be found on stage with The Concert Band of Cobourg, The Majesty Hills Duet, and with Chris Devlin and Madman's Window.

Classes: Tin Whistle, Kitchen Party

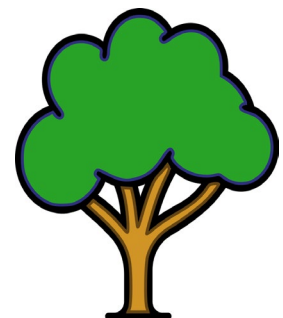


Patricia "Pat" Wheeler (Cookstown, ON) is a talented saxophonist, arranger, composer, and teacher. Pat has graced stages across North America, collaborating with a diverse array of artists including Michael Burgess, Ronnie Hawkins, Alex Pangman, Regis Philbin, Jackie Richardson, and Serena Ryder.

Patricia is a long-standing member of the JUNO Award® winning Neufeld-Occhipinti Jazz Orchestra and has lent her skills to the pit orchestra of the Shaw Festival Theatre in historic Niagara-on-the-Lake, participating in several productions.

Patricia holds a B.F.A. (Honours), M.A. and a Ph.D. in Music, demonstrating her deep understanding of and commitment to the art form. When she's not captivating audiences with her saxophone and writing prowess, she takes on the role of Big Band Director for the New Horizons Band of Toronto and is a professor of composition and film music history at Toronto Metropolitan University and Centennial College.

Classes: Intro to Big Band, Big Band - Advanced, Intro to Film Music



PLAN FOR THE WEEK

Monday Schedule (Arrival Day)

3:00-5:00 PM	Camp Check In
5:00-6:30 PM	Dinner
7:00-8:00 PM	Band Rehearsals - Advanced Band and Intermediate Band

Tuesday-Thursday Schedule

7:30-8:30 AM	Breakfast in the Dining Hall
8:15-8:45 AM	Brass Warm-Ups
9:00-10:00 AM	Advanced Band, Intermediate Band (Session 1)
10:00-10:30 AM	Snack/Coffee Break
10:30-11:30 AM	Recorder, Film Music, Melodic Creativity, Sax Ensemble, Woodwind Ens., Mixed Level Brass Ens.
11:30 AM-12:30 PM	Lunch in the Dining Hall
1:00 PM-2:00 PM	Advanced Band, Intermediate Band (Session 2)
2:00-2:30 PM	Coffee Break
2:30-3:30 PM	Clarinet Ens., Flute Choir, Big Band (Adv), Bucket Band, Music Theory for Intermediate Band
4:00-5:00 PM	Ukulele Inter/Advanced, Flute Ens., Introduction to Big Band, German Band, Tin Whistle, Music Theory for Advanced Band
5:30-6:30 PM	Dinner in the dining hall
7:00 PM Tues and Wed.	Sing Along, Line Dancing, Percussion Ensemble

Thursday Evening

6:30-7:00 PM	Small Ensemble Concert
7:30-8:30 PM	Kitchen Party with Chris and Graham, of <i>Madman's Window</i> , and Lisa

Friday Morning

7:30-8:30 AM	Breakfast and Check-Out
10:00-11:00 AM	Celebratory Performances in the Theatre (open to the public).
11:00 AM	One last song together "Happy Trails to You" and Departure

Registration

Pre-Registration now open!

[CLICK HERE to PRE-REGISTER TODAY!](#)

Last Day to Pre-Register is June 1

REMI Subscribers receive a \$40 camp discount.

****To become a subscriber for free, go to royernstmusic.com.**

Registering is an easy 2-Step Process

Step 1 - Pre-registration: This will reserve a place for your instrument in the large ensemble and classes you select. It is possible that there will be wait lists for some instruments and choices. You do **not pay a registration fee** at this time.

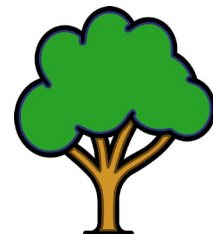
To PRE-REGISTER click here or visit the [Roy Ernst Music Institute](http://RoyErnstMusicInstitute) website.

Or copy this address into your browser:

<https://www.cognitoforms.com/TheRoyErnstMusicInstitute/LakefieldParticipantPreRegistrationForm2024>

Step 2 - Registration: Once you have been accepted to camp you will receive instructions on how to complete your registration. At this time you will be choosing your accommodation, meal plan and be making a payment to REMI to reserve your place in the camp via check, credit card or eTransfer.

****As soon as sufficient enrollment is obtained for the camp to be held, participants will be notified so that they can then make travel arrangements.***



Fees in Canadian Dollars (USD in brackets)

Camp Fee - \$495 (\$360) subscriber price: includes all instruction, access to and use of LCS grounds, rental of rehearsal rooms and classrooms, theatre and rental of percussion and other equipment, and camp insurance.

Meal Packages:

Option 1 - \$240 (\$175): includes three meals per day. Monday dinner, breakfast, lunch and dinner
Tuesday-Thursday, Breakfast Friday.

Option 2 - \$170 (\$124): includes two meals per day. You may prefer this if you are staying off-campus where breakfast is provided. Monday dinner, Tues-Thursday lunch and dinner.

Option 3 - \$30 (\$22): no meals included but includes 6 snack breaks (coffee/tea, treats)

Accommodations:

Common washrooms are in dorms, 2 per floor (which will be sex specific). Shared bathrooms are between only 2 rooms. Private bathrooms are ensuite.

Options	1 person per night	1 person for 4 nights
Shared Room – Common Washrooms	\$60 (\$44)	\$240 (\$175)
Private Room – Common Washrooms	\$87 (\$64)	\$348 (\$254)
Shared Room – Shared Bathroom	\$70 (\$51)	\$280 (\$204)
Private Room – Shared Bathroom	\$95 (\$69)	\$380 (\$277)
Shared Room – Private Bathroom	\$80 (\$58)	\$320 (\$233)
Private Room – Private Bathroom	\$125 (\$91)	\$500 (\$364)

IMPORTANT NOTE: For campers that stay off campus, Lakefield College charges a **Daily Use Rental Fee** of **\$31.95 (\$23.30 USD)** per day.

[PRE-REGISTER BY CLICKING HERE](#)

Space Descriptions

All REMI camp's classrooms, rehearsal spaces and the dining hall are wheelchair accessible. We will have wheelchair accessible rooms available. All dormitories are air-conditioned. All rooms have single-size beds, have shared multi-fixture bathrooms separate for male and female. There is ample parking at the dorms and near the academic facilities.



Most dormitories have rooms on ground and second floors. The Cooper dormitory is wheelchair accessible, but not the Standard dormitories. Otherwise, the campus is wheelchair accessible although the distances can be challenging, so a motorized wheelchair could be helpful. Some doors are equipped with automatic door openers. The classroom building is serviced by an elevator between the two levels, but it is not centrally located. Accessible washrooms are available. If you may wish to stay off campus, there are many comfortable BnBs, hotels and campgrounds in the area.

[PRE-REGISTER BY CLICKING HERE](#)



Cancellation Policy

1. Cancellation Before June 1:

- If a participant cancels their registration before June 1, they are eligible for a **100% refund**.
- A **\$50 administrative charge** will be deducted from the refund amount.

2. Cancellation After June 1:

- No refunds will be provided for cancellations made after June 1.

Cancellation requests must be sent to royernst1@gmail.com as soon as possible.

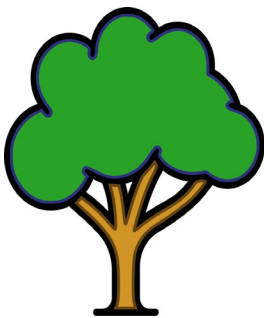
S

DISCLAIMERS

1) There is always a chance that the camp will be cancelled. **Before buying non-refundable airline tickets**, confirm that the camp will happen by writing to Roy at: royernst1@gmail.com.

2) Smoking, vaping, consuming alcohol or taking illicit drugs are **not permitted** on Lakefield College School property.

3) There will be no lifeguard on duty. Therefore, you will be **using the waterfront and lake at your own risk**.



[PRE-REGISTER BY CLICKING HERE](#)

