

My country, 'tis of
thee, Sweet land of
liberty, Of thee I sing;
Land where my
fathers died, Land of
the pilgrims' pride,
From every mountian
side Let freedom ring.

We are Called. God's Work. Our Hands. God's Family! JULY 2021

Sunday	Monday	Tuesday	Wednesday	Thursday	Friday	Saturday
Pastor Scott Meyer C# 507-319-0715 scottmeyer39@hotmail.com	Wanda Hanson, Office Sec H#: 641-326-2392 C#: 515-290-0936 O#: 507-325-2437 waha04@hotmail.com					
6th Sunday after Pentecost 9 A: Our Savior's w/HC Happy 4 th of July!	Pastor Scott's Day Off	10-12 Pastor at the TLP Office		4-6 Pastor at the TLP office		
7th Sunday after Pentecost 9 A: Our Savior's 6 P: F at Outdoor 7 P: Outdoor Drive-In	Pastor Scott's Day Off	10-12 Pastor at the TLP Office 1 P: M&M BS, H: Becky		4-6 Pastor at the TLP office		
8th Sunday after Pentecost 9 A: Our Savior's 7 P: Outdoor Drive-In	Pastor Scott's Day Off	10-12 Pastor at the TLP Office		4-6 Pastor at the TLP office		
9th Sunday after Pentecost 9 A: Our Savior's 7 P: Outdoor Drive-In	Pastor Scott's Day Off 6:30 P: MLL, H: Becky	10-12 Pastor at the TLP Office		4-6 Pastor at the TLP office		
HC = Holy Communion F = Fellowship OS = Our Savior's	NOTES: MLL: Remember your Secret Prayer Pals					

AUGUST

S M T W T F S
 1 2 3 4 5 6 7
 8 9 10 11 12 13 14
 15 16 17 18 19 20 21
 22 23 24 25 26 27 28
 29 30 31

T.L.P. IN TOUCH

Trinity Lutheran Parish Monthly Newsletter: Mona & Six Mile Grove Lutheran Churches

July 2021

From the Pastor

"And let us consider how to provoke one another in love and good deeds, not neglecting to meet together, as in the habit of some, but encouraging one another, and all the more as you see the Day approaching."
Hebrews 10:24-25

According to the calendar, summer began a couple weeks ago....In spite of how it's felt like summer for quite a while already, it is amazing how fast time seems to go. It seems like as soon as it turns warm and humid, we forget all about spring and go right into complaining about the heat. I guess we're just never satisfied.

Summer is usually the time when worship attendance goes down. People go on vacations, families get together, farmers and others are working outside, and many of us just want to stay home and take it easy when we have free time. Those are all wonderful ways to celebrate the season. But it doesn't have to mean that worship gets neglected.

This summer, like we did a year ago, we're having one outdoor service on Sunday mornings for the three churches, with Our Savior's hosting for the month of July. And for those who can't be here in the morning, the Mona Outdoor Drive-In will begin Sunday, July 11th at 7 pm. Even though we worship in our vehicles, going to these outdoor services can help satisfy the need we all have to get together with other Christians and sing, pray, and hear God's word.

I would like to invite those who haven't been to church in a while to join us either on Sunday morning at Our Savior's or Sunday evenings at Mona. In spite of our busy schedules, regular worship is important for us as Christians. It keeps us conscious of our faith, it keeps us connected with God's word, and it keeps us united with our brothers and sisters in Christ.

Have a great summer, and we'll see you in church.

Pastor Scott Meyer

YOUTH

Sunday School: Enjoy your Summer Vacation!

Good Earth Village Summer Bible Camp

Go to www.goodearthvillage.org for more information.

Mona children: Any older child who would like to go to G&E let a council member know. The Mona church is willing to help with expenses.

SMG children: SMG will pay 100% of camp costs for any SMG youth who attends a camp or activity at G&E or Ironwoods in 2021. Fill out application online @ www.sixmilegrove.org or submit invoice to SMG church.

Confirmation: Enjoy your summer vacation!

Roar Bible School at Our Savior's in Lyle July 12th - 16th.

Please contact church if your child would like to attend.

WORSHIP VOLUNTEERS

Outdoor Drive-In:

Sunday, July 11	Mona Serves and Ushers
Sunday, July 18	Mona Serves and Ushers
Sunday, July 25	Mona Serves and Ushers
Sunday, Aug 1	SMG Serves and Ushers
Sunday, Aug 8	SMG Serves and Ushers
Sunday, Aug 15	SMG Serves and Ushers

Thank YOU for the giving of YOUR time
and having a Servant Heart!

PRAY

Prayers of Healing and Strength to:

Diecie Dreyer Parker Gemert Rosie Hagelund Dick Hagelund
Myron King David Kline Anders Knudsen Lorraine Kylo
Cathy Lewis Joyce McKee Ann Meyer Jessie Meyer
Loren Meyer Pastor Scott Meyer Lydia Mittag Ray Mittag
Vern Moore Trish Morgan Lormier Nelson Karen Peterson
Roger Praybyski Trevor Ricke Vern Titus Kyle Trytten
Deanna Wagner Jay Wangen Norma Wangen Russ Wangen
Don Whalen Lily Wiste

Please pray for God's protection of our troops and HIS wisdom for their commanders. "Lord, hold our troops in your loving hands.

Damian Reynolds Christopher Slindee David Broin
Ryang Kim Thomas Frank Kelly Fredrickson
Erik Haugen Riley Wondra Adam Dublinske
Skyler Thomas

Protect them as they protect us. Bless them and their families for the selfless acts they perform for us in our time of need. I ask this in the name of the Jesus, our Lord and Savior. Amen.

Missions to pray for:

>Pastor Samuel, his family and church members in Oaxaca.
>Friends of Ngong Road children and their families – Lenny Kamanda, Josephine Wairimu, Monica Wanjiku, Sharon Mideva, Victor Nyarega, Faith Munro, Emily Wanjiku, Godfrey Otieno and Swinny Mbene.
>Peace and Power, Marie Sandvick Center, Lyle Food Shelf, Good Earth Village, Noah's Ark Adventure

Prayers for guidance:

Pastor Scott ~ Parish Council ~ Church Councils ~ Sunday School Teacher ~
Members of Six Mile Grove, Mona & Our Savior's Lutheran Churches

Sympathy and Prayers

...to the family of Sandra Ashley. She was the wife of Mark Ashley.
...to the family of Sue Klampe Dahle. She was the daughter of Phyllis & Wayne Fossey and sister to Janice (Fossey) Abkes and Tami (Fossey) Penning.

Growing in God's Word

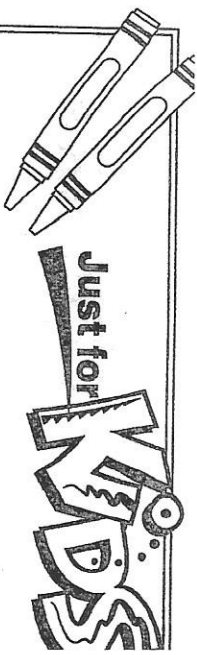
Try this craft as a reminder that we need to continue to grow in God's Word.

What you will need:

- Small terra cotta pot and plate
- Acrylic paints (various colors)
- Paper plate
- Potting soil (enough to fill the pot)
- Small inside plant (can be purchased at a garden nursery) or packet of seeds.
- Newspaper
- Paintbrush
- Cup of water
- Permanent black marker

What you do:

- 1) Spread some newspapers out on a table for your working area.
- 2) Squeeze the paint colors that you wish to use onto your paper plate.
- 3) Paint designs on the pot and plate. Make sure you clean your brush in the cup of water when changing colors.
- 4) When the pot is dry, take the black marker and on the collar (top part of the pot) write:
"Growing in God's Word"
- 5) Pour a small amount of potting soil into the bottom of the pot. With an adult's help, place your plant into the pot and surround your plant with the rest of the soil. If planting seeds, follow the packet instructions.
- 6) Water your plant so the soil is moist. Check your plant every day and keep the soil moist.
- 7) Enjoy watching your plant grow, and remember that you, too, need care as you grow in God's Word.



GROWING IN GOD'S WORD

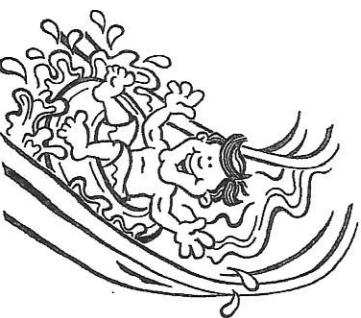
God wants you to be "planted" in His Word and to grow up serving him all your life.

Unscramble each underlined word, and write it in the blanks below. Use the definitions as clues.

Psalm 1:3 NIV tells us what we should be like:

"He is like a (1) ete (2) gpetan by (3) smates of (4) rawte, which (5) ledsly its fruit in (6) sonsea and whose (7) afle does not (8) rithew. Whatever he does (9) sproptes."

1. _____ (a wood plant with one main stem or trunk which has many branches)
2. _____ (rooted into the ground)
3. _____ (small rivers)
4. _____ (a colorless and transparent liquid)
5. _____ (produces, gives)
6. _____ (a time of the year)
7. _____ (flat, thin part of a plant growing from the stem — usually green)
8. _____ (to dry up or wilt)
9. _____ (succeeds)



CHURCH INFO

SUMMER WORSHIP SCHEDULE: (Masks are up to you.)

Our Savior's services will be outside weather permitting.

Sunday's in July	9:00 am	Our Savior's
Sunday's in August & Sept 5	9:00 am	SMG

PARISH COUNCIL MTG

Parish Council will not meet this month unless there is something we need to discuss. However, we will meet with Our Savior's on Thursday, July 22 at SMG at 8:00 pm.

OUT DOOR DRIVE-IN FUNDRAISER

THANK YOU for the generous contributions that you have given! Please see the schedule and we will hope to see you there!

Outdoor Drive-in T-shirts are for sale \$15.00. Contact Wanda to order.

MONA LUTHERAN LADIES COLLECTING ITEMS

LWR – collecting school supplies till September

MONA MEMBERS

The Mona Council has been toying with the idea of replacing the steeple on the church – cost \$15,000 +?? not sure. Please let a council member know your view on this.

WELCA / CIRCLES

- >SMG WELCA – No meeting in July.
- >Naomi Circle – No meeting in July.
- >Ruth Circle – No schedule set, contact Phyllis H or Pam S for info
- >Mona M&M Circle/BS – Tuesday, July 13 at 1:00 pm, H&L: Becky
- >Mona LL – Monday, July 26 at 6:30 pm, H: Becky
- >The SMG WELCA will be collecting Food and other personal items for the Lyle Food Shelf every 3rd Sunday of each month.

GOOD EARTH VILLAGE

After prayerful discernment, the staff and board of Good Earth Village have decided that our program focus this summer will be intergenerational overnight camps and one-day adventure experiences. While we wish we could offer traditional youth overnight camp programs, with what we know at this time regarding COVID-19 spread and management, we feel this is the best decision for the safety of our campers and community. We are joyfully planning for wonderful themed days for K-

12 grade campers and fun faith-filled family experiences onsite. Check out our website for camp descriptions, dates, and pricing. Registration is open. We hope to see you at camp!

COMMUNITY

Lyle Food Pantry/Shelf

The last Saturday of the month (July 31) at Our Savior's in Lyle will hand out food bags at 10:00 am.

Can Drive: At HOME First = Helping Others Means Everything

Please deposit your empty aluminum pop cans into the fenced trailer at Mona Lutheran Church. Thank YOU!

Cans for Cancer

Collecting aluminum cans through out the year with a collection box behind the Lyle Legion. Please donate your empty aluminum cans to a very worthy cause.

FOOD SHELF AT OUR SAVIOR'S

The food pantry at Our Savior's is grateful for your support, please help us keep our shelves full.

THANK YOU

Thank YOU to those of you who are the lawn mowers at Mona!

We are called. God's work. Our hands. God's Family!

We pray for: Glen Moss, Lorraine Kylo, Don Walega, Karen Peterson, Trevor Ricks, Pastor Scott, Ray Wittig, Skyler Thomas, Deanna Wagner, Jay Wanger, Kyle Trifften, Parker Gennert, Rosie and Eric Hagelund, Lily Wiste, Russ and Norma Wanger.

Attendance / Offering for 3rd Outside worship at Mona Sunday, 6/20 NR
Mona offering for May \$2030 Regular, \$100 church use, \$40.50
Caxaca.

Summer Schedule: (Masks are required if indoors.)

**Worship will be outside weather permitting*

Sunday's in July 9:00 am Our Savior's*

Sunday's in August 9:00 am SMG

Outdoor Drive-in:

- Thank **YOU** to all of you for your generous offerings during the Fundraiser!
- Starts Sunday evenings at 7:00 pm on July 11th and then for the next 5 Sunday's following. You are invited to come and celebrate 50 years of Honking for Jesus!
- T-shirts are for sale \$15.00. Contact Wanda to order by calling 515-290-0936 or emailing wahacac42@hotmail.com.

This Week's Events:

Monday	Pastor Scott's Day Off	
Tuesday	10-12	Pastor is in the Parish Office
Thursday	4-6 pm	Pastor is in the Parish Office
Sunday	10:00 am	at Outdoor Worship at Our Savior's
	6:00 pm	Fellowship begins w/Hot Dogs, Chips and RB floats
	7:00 pm	Outdoor Drive-in w/the Brandon Sampson Family

Trinity Lutheran Parish: Mona and Six Mile Grove Lutheran Churches
Parish Office: 405 First Street, PO Box 69 ~ Lyle, MN 55953
Pastor Scott C# 507-319-0715 Office # 507-325-2437

Happy 4th of July!

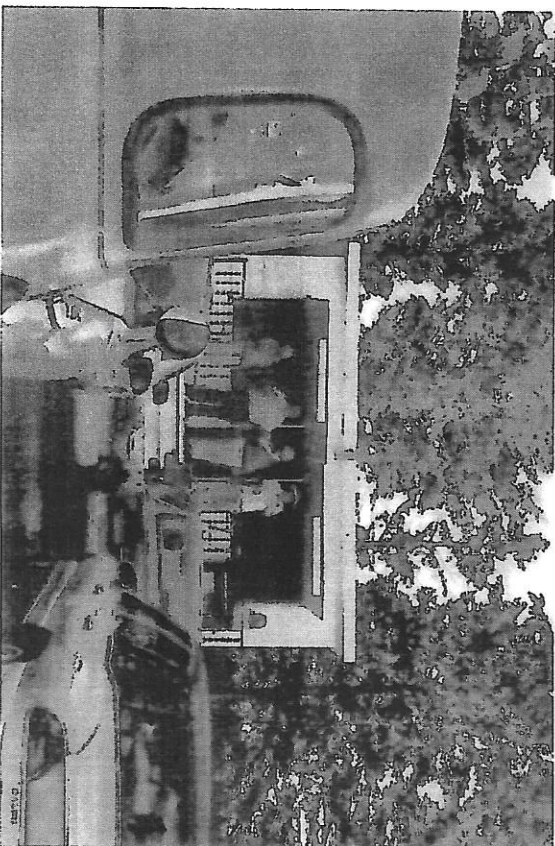
Now the Lord is the Spirit, and where the Spirit of the Lord is, there is freedom.

2 Corinthians 3:17

Outdoor Drive-In

Christian / Family Entertainment

Sunday evenings at 7:00 pm in Mona, IA
Turn off of HWY 218 on Mona Drive (which is in the middle of the curve)
1 mile south of Lyle, MN or 8 miles north of St. Ansgar, IA.



Come as you are, sit in your car, and honk for Jesus!

- July 11 Brandon Sampson & Kelsey Korfage
- July 18 Just Friends from Southern MN area
- July 25 Polka Service
- Aug 1 Al Batt
- Aug 8 The Looney Lutheran's from St. Paul, MN
- Aug 15 Ben Unseth and the Meyer Family

Celebrating 50 Years of Honking for Jesus!

The free-will offering that is received supports this ministry 100%!

For more information call #507/325-2437

or visit Facebook: Mona Outdoor Drive-In.

Physical address: 1405 49th St ~ St. Ansgar, IA 50472

Sponsored by: Mona & Six Mile Grove Lutheran Churches

!!! July 22 and Aug 25 we will be serving !!!

Hot Dogs, Chips & Rootbeer Floats at 6 pm.

Free Popcorn each Sunday evening!