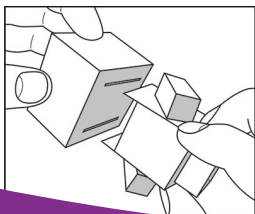
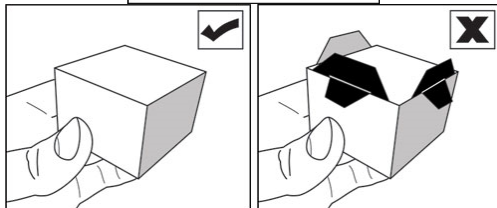
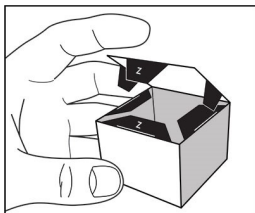
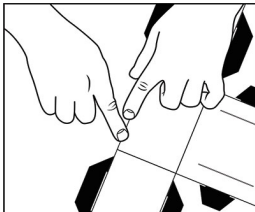
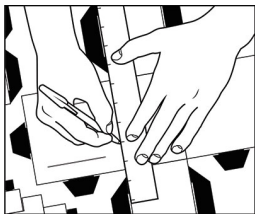
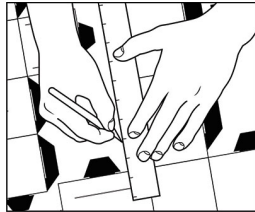


To Do To Go: Teens

Try a new To Do To Go activity each month!



1. Cut out the shapes on the page.

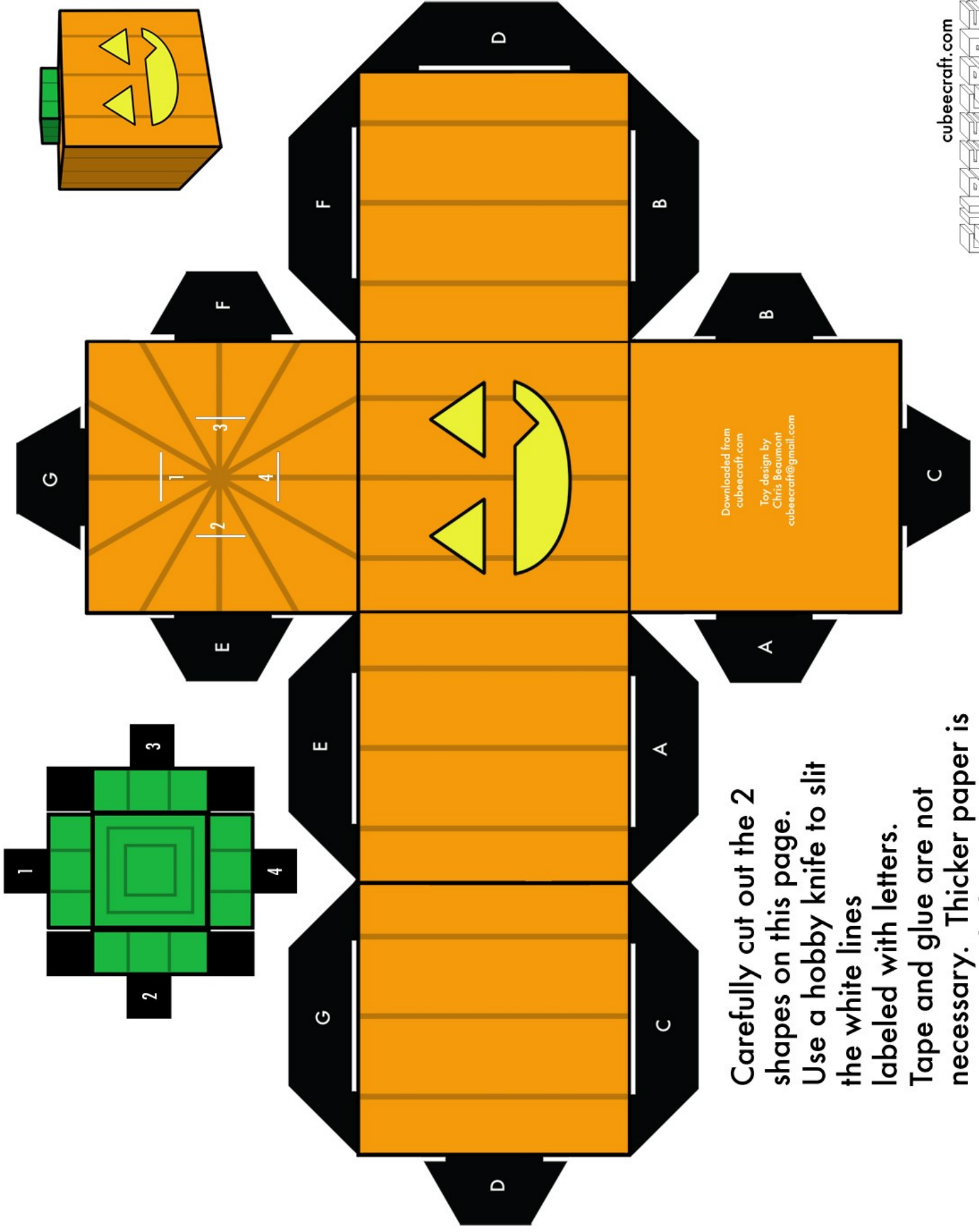
Scissors will work but a hobby knife will give you nice straight lines if you use a metal ruler.

2. Using an empty pen or a paperclip score the lines you will be folding – it will ensure a cleaner fold.

3. Fold!

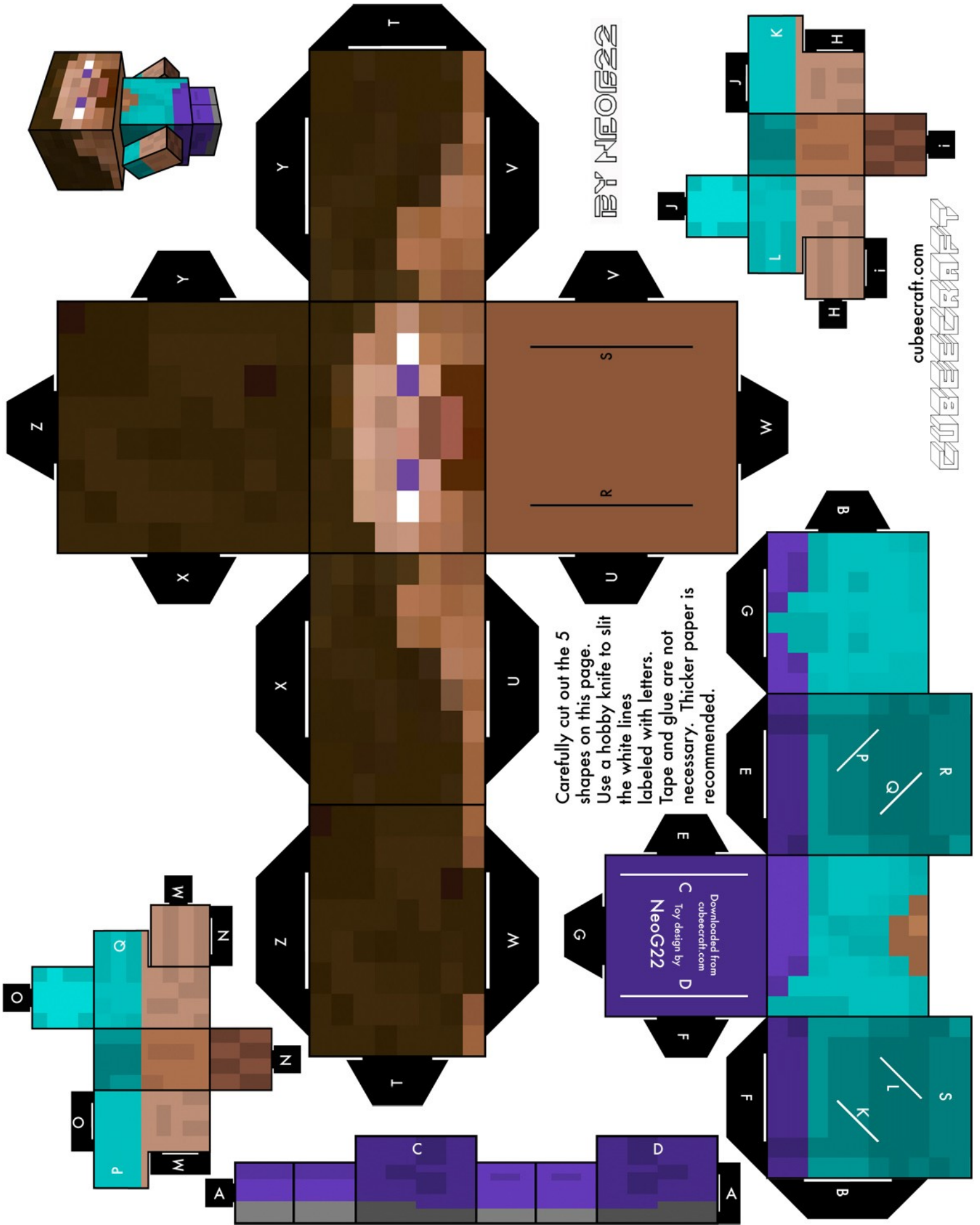
4. Fold the tabs into the corresponding slots. Tabs should go inside the main shape, not sticking outside!

5. Each of the 5 pieces of the body – head, torso, arms and legs – will connect by being “plugged in”. Be sure to match the labelled tabs just like you did before!



Carefully cut out the 2 shapes on this page. Use a hobby knife to slit the white lines. Tape and glue are not necessary. Thicker paper is recommended.

Downloaded from
 cubeecraft.com
 Toy design by
 Chris Beaumont
 cubeecraft@gmail.com



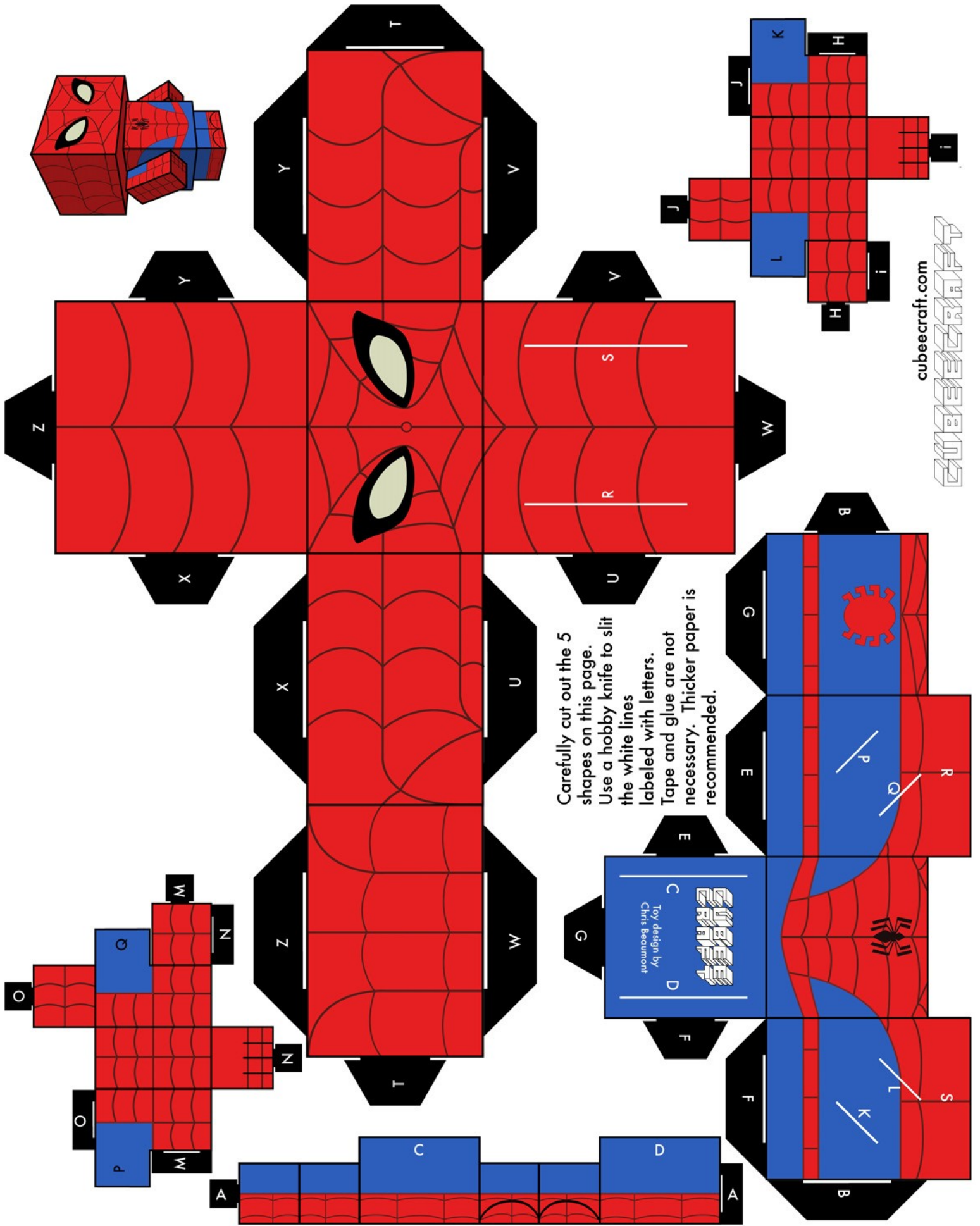
Carefully cut out the 5 shapes on this page. Use a hobby knife to slit the white lines labeled with letters. Tape and glue are not necessary. Thicker paper is recommended.

BY NEOG22



cubeecraft.com

Downloaded from
cubeecraft.com
Toy design by
NeoG22



Carefully cut out the 5 shapes on this page. Use a hobby knife to slit the white lines labeled with letters. Tape and glue are not necessary. Thicker paper is recommended.