



DORTHE

COMMUNICATION SERVICES LLC

BUSINESS PROFILE



HELLO & WELCOME!

The effective way of integrating technologies is the most important factor in today's business. We should remember this while taking all measures to satisfy our customers which will bring us more business opportunities .

My vision is to transform dorthel to the company of best choice in the emea region. I always do my best to keep my staff motivated so that they come up with bright ideas to increase the company outlook.

VISION AND MISSION



OUR VISION



To become the regional trusted party for all ict, security & elv systems design, implementation, integration and operational needs



OUR MISSION



"At Dorthe Communications, our mission is seamless connectivity. We offer reliable, cutting-edge installations empowering clients in a digital world."

WHO WE ARE

Dorthe communications is a leading provider of specialized installation services in the field of wired and wireless communications. With a rich history of expertise and innovation, we are committed to delivering top-notch solutions for communication and wireless system equipment installation, internal communication network installation, and computer network infrastructure maintenance

“Our goal is to become the partner of choice by helping enterprise organizations create leading-edge Solutions to complement their business strategy.”





**IDEAS ARE EASY.
IMPLEMENTATION
IS HARD. ...**



OUR DIVISION

PROFESSIONAL SERVICES

Our professional services team are capable of providing the best solutions in Design, Technical Consultancy, Engineering, Planning, Site Implementation, Project Management and Operation.

SYSTEMS INTEGRATION

DORTHE, as a regional leading Systems integrator, offers a broad spectrum of cutting-edge solutions and best-practice services in the fields of IT, Security and ELV, across multiple verticals

OUR CORE VALUES

1

RELIABLE

We have gained a solid trust from our customers over the past many years

2

INNOVATIVE

Our technical team is always exploring the latest trends and technologies in the market.

3

EXPERIENCE

Both our technical and project management teams have more than 18+ years of experience in handling large projects.

4

AFFORDABLE

We are cost conscious as we are meeting the customer requirements while maintaining the budget

Our core value is the bedrock of our organization, shaping our identity and driving our actions. Integrity is at the heart of everything we do, ensuring that we always act with honesty, transparency, and ethics. Collaboration is our guiding principle, fostering a culture of teamwork, open communication, and shared success. Innovation fuels our progress, encouraging us to seek creative solutions and adapt to a changing world. Diversity is our strength, as we believe in the power of different perspectives and backgrounds to drive innovation and excellence.

OUR CORE SERVICES

ICT SOLUTIONS

Network, Network Security, Structured Cabling, Wireless, Data Centre and IP Telephony.

SECURITY SOLUTIONS

CCTV, Access Control, Intercom, Face/Plate Recognition, Video Analytics, Perimeter/Intrusion Detection, Scanning and Screening, Physical Security, Command and Control Centre, Video Wall

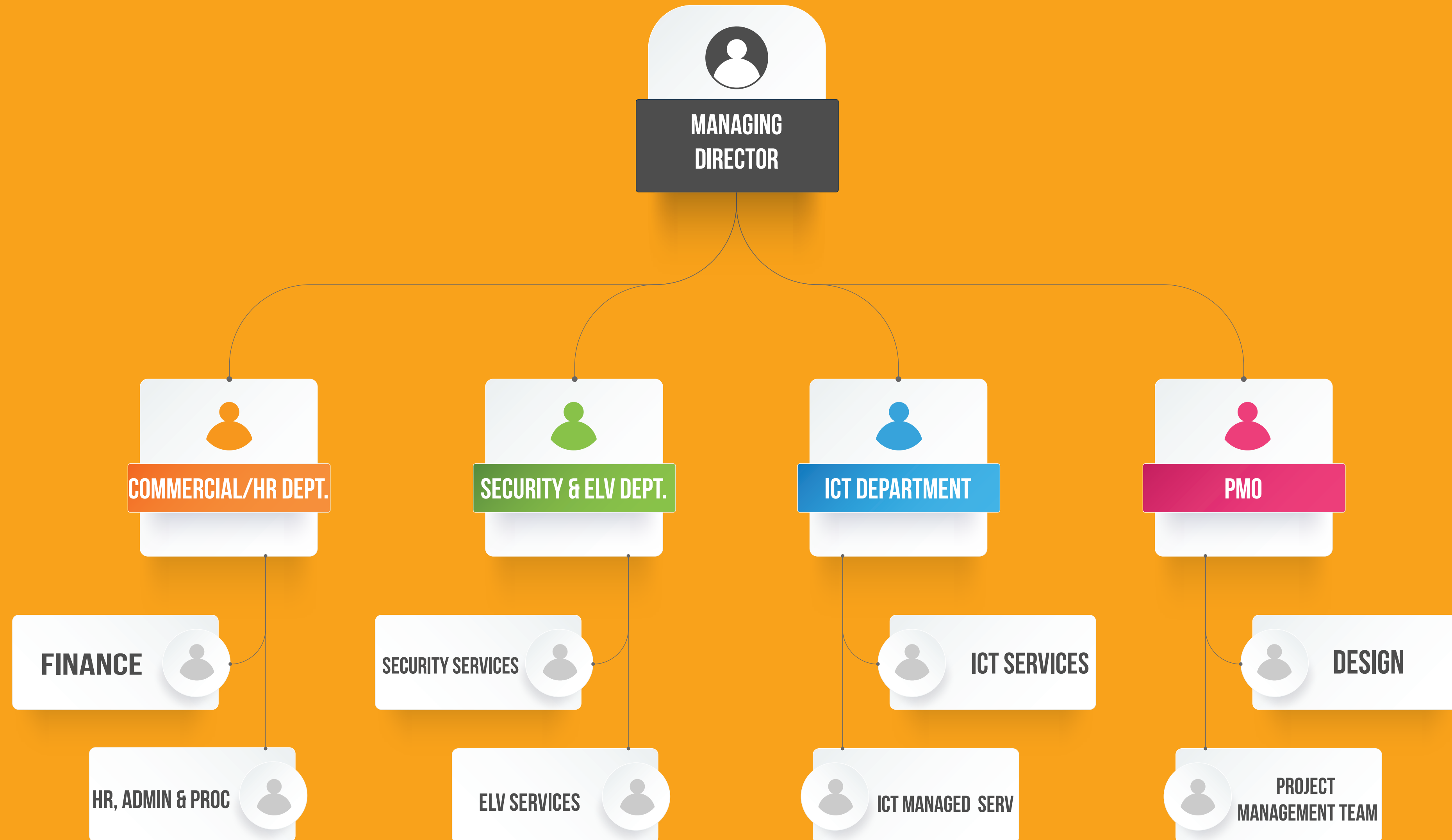
ELV SOLUTIONS

IPTV, Audio Video, Background Music, Public Address System, Master Clock System

PROJECT MANAGEMENT

Project Planning
Quality Management
Site Management
Contract Management.

OUR COMPANY STRUCTURE



**OUR
PRESENCE**

Hospitality

Government

RESIDENTIAL

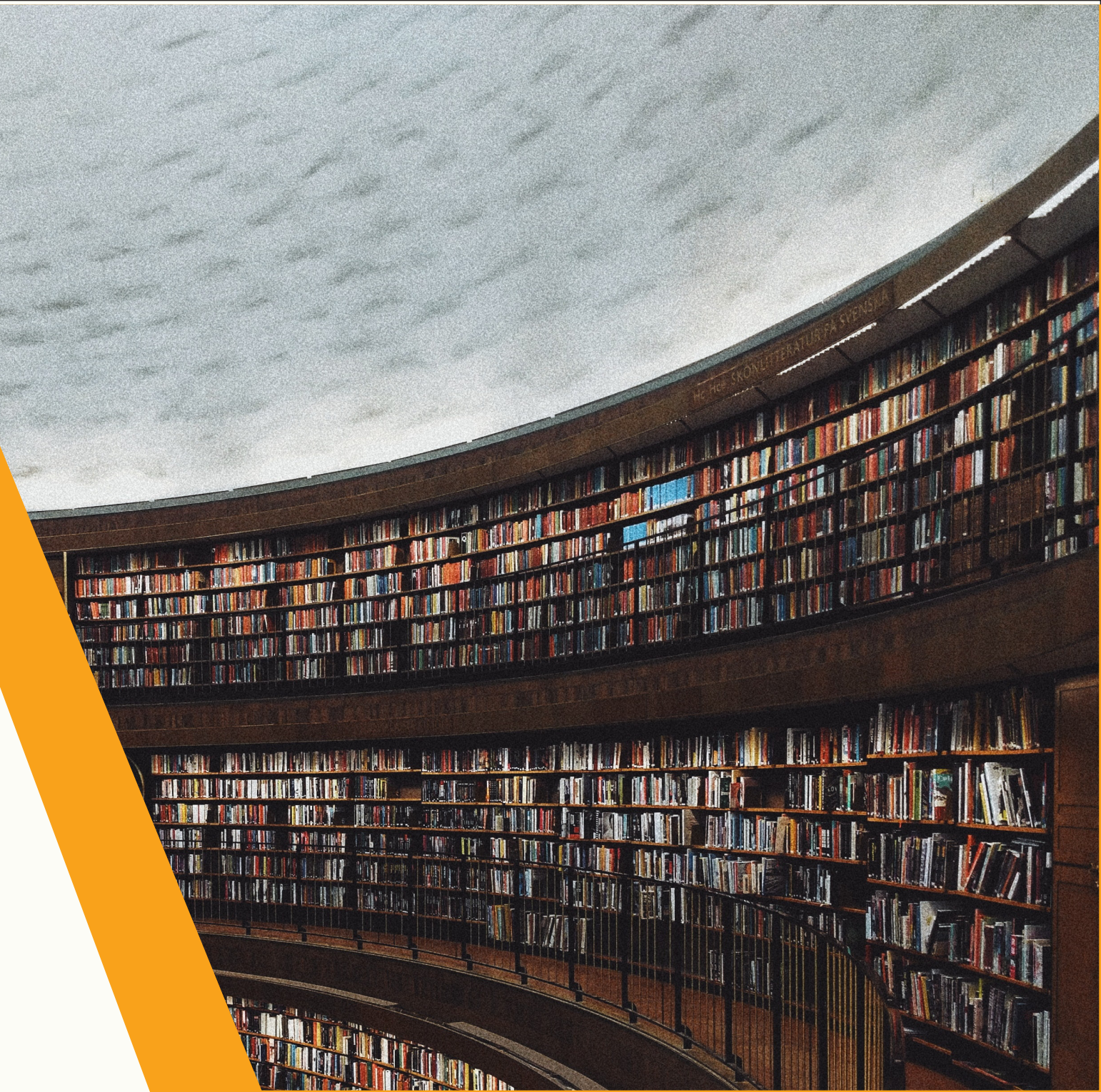
Manufacturing

**SHOPPING
MALLS**

Universities

AIRPORTS

BANKS



OUR PROFESSIONAL OFFERINGS



"DON'T WAIT FOR OPPORTUNITIES, CREATE THEM."



"THE BEST WAY TO PREDICT THE FUTURE IS TO CREATE IT."



01

IMPROVE CUSTOMER RELATION

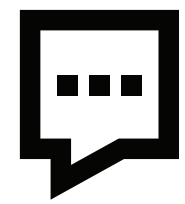
We are customer oriented. Our success is measured against our ability to sustain our customer satisfaction level and expand our clientele base.



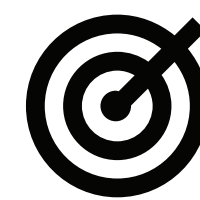
02

Company Expansion

In addition to the main office in Dubai-UAE and the Branch office in India



OUR AMBITION



NEW SOLUTIONS

DORTHE communications will be adding more solutions to the existing portfolio on continuous basis.

03



GLOBAL REACH

Expanding in EMEA, partnering with local firms for closer customer connections, and improved product accessibility in diverse markets.

04



THANK YOU

Contact us

Get In Touch With Us

Contact us

For assistance or inquiries, please contact us through email or our website's contact form. We're here to help and eager to hear from you.

