

Suitability Evaluation

Electric Utility Access

Arup and the County met with representatives from Dominion Energy and NOVEC, the County's two electricity service providers. Neither provider was able to share detailed maps of the electrical grid infrastructure due to security rules, meaning that a detailed analysis of access to the electrical grid could not be included in Arup's analysis. However, locations of existing high voltage transmission lines were publicly available. Both providers cited challenges with creating additional transmission, and that proximity to existing power lines was generally advantageous for a site, as it required less new infrastructure. Arup used proximity within 1 mile of major transmission lines to show areas that are more suitable for this criteria. Adding new infrastructure beyond this distance increases the complexity of a project, whereas development on properties within that distance requires less new power transmission lines to support.



Image source: Dominion Energy

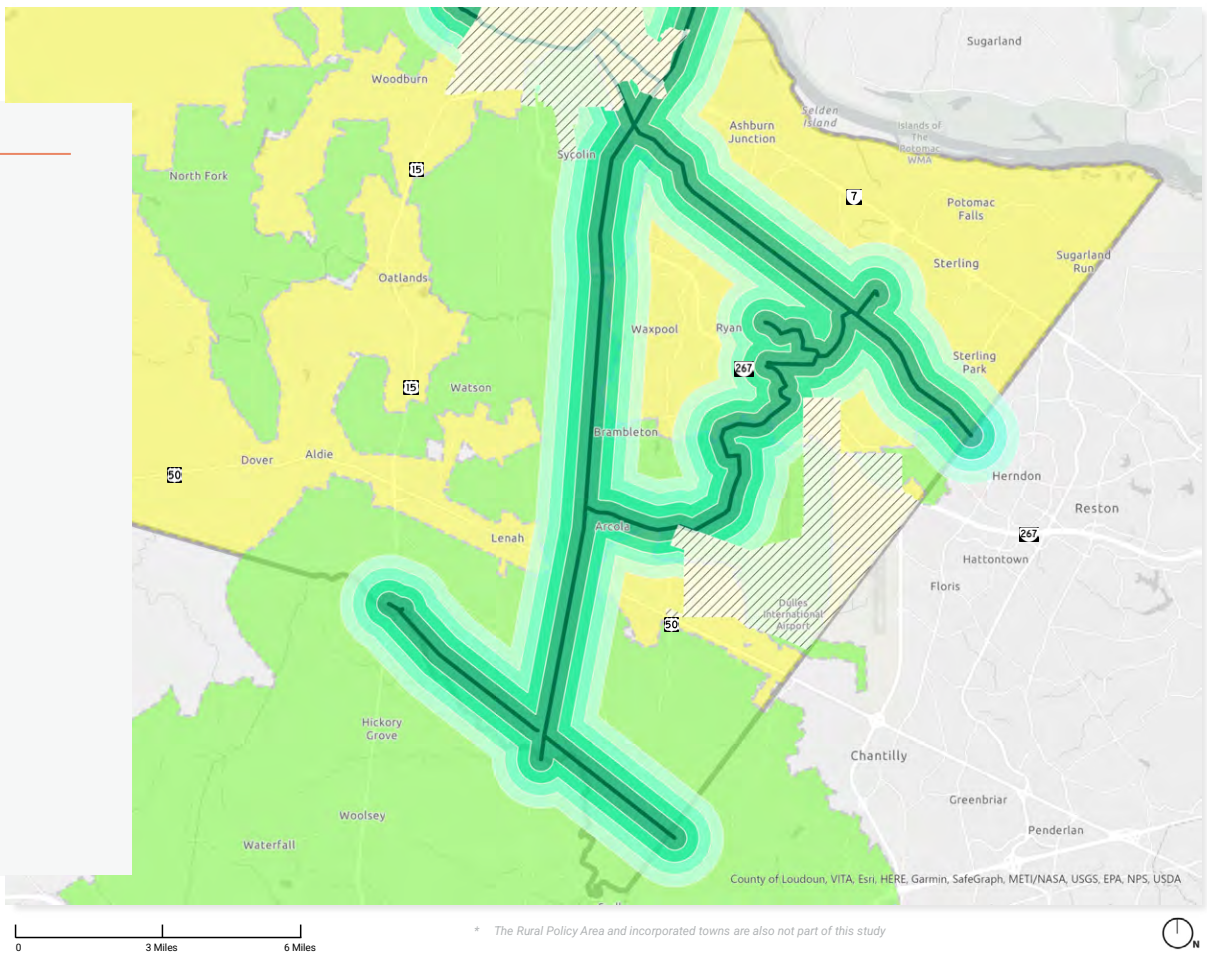
Suitability Evaluation

Electric Utility Access

Criteria	Score
<i>Distance from transmission line</i>	<i>Highest score is most suitable</i>
0.25 mile	10
0.5 mile	8
0.75 mile	6
1 mile	4
Other Areas	1

Electric Service Area


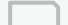
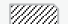
- DOMINION
- NOVEC
- Transmission Lines
- County Boundary
- Areas Not Included in Analysis*

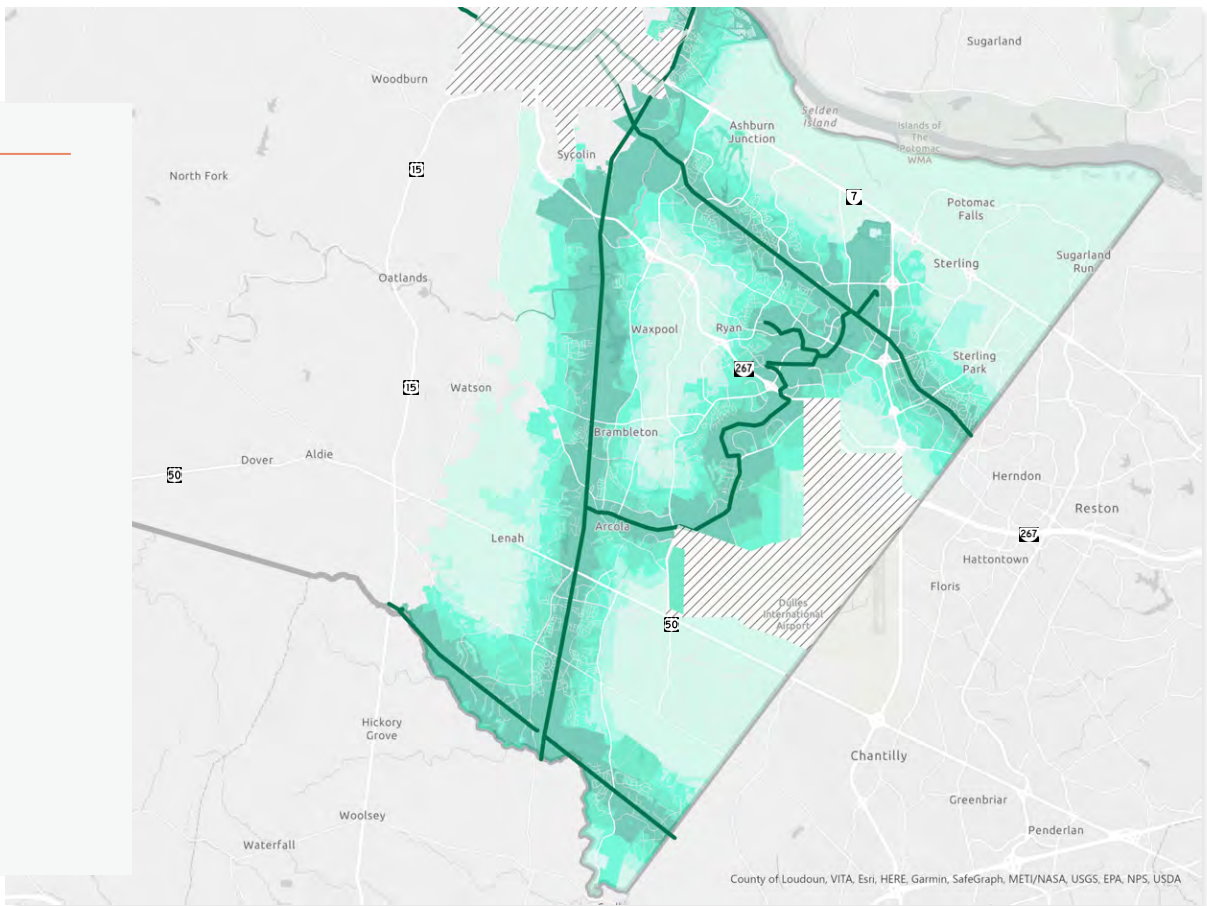


Suitability Evaluation

Electric Utility Access (Parcels)

Criteria	Score
<i>Distance from transmission line</i>	<i>Highest score is most suitable</i>
0.25 mile	10
0.5 mile	8
0.75 mile	6
1 mile	4
Other Areas	1

-  Transmission Lines
-  County Boundary
-  Areas Not Included in Analysis *



County of Loudoun, VITA, Esri, HERE, Garmin, SafeGraph, METI/NASA, USGS, EPA, NPS, USDA

* The Rural Policy Area and incorporated towns are also not part of this study