



INTERNATION BLVD - RETAIL BUILDING B CONCEPT

Presented by:

BCRA
2106 Pacific Ave. Suite 300
Tacoma WA 98402
253.627.4367
www.bcradesign.com

SEPTEMBER 22, 2022

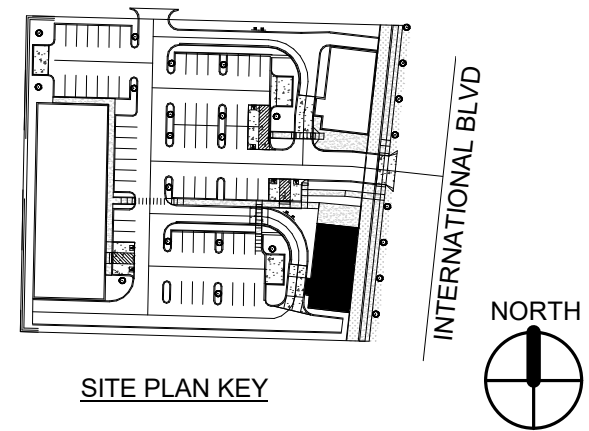
EXECUTIVE SUMMARY



Project Location:	20841 International Blvd, SeaTac, WA 98198
Parcels:	Parcel #0922049351, #0922049041, #0922049352 (combined)
Parcel Areas:	TOTAL: 78,511 SF
Jurisdiction:	City of SeaTac
Development intent:	A quick service restaurant with drive-through
Zoning Designation:	Community Business in Urban Center (CB-C)

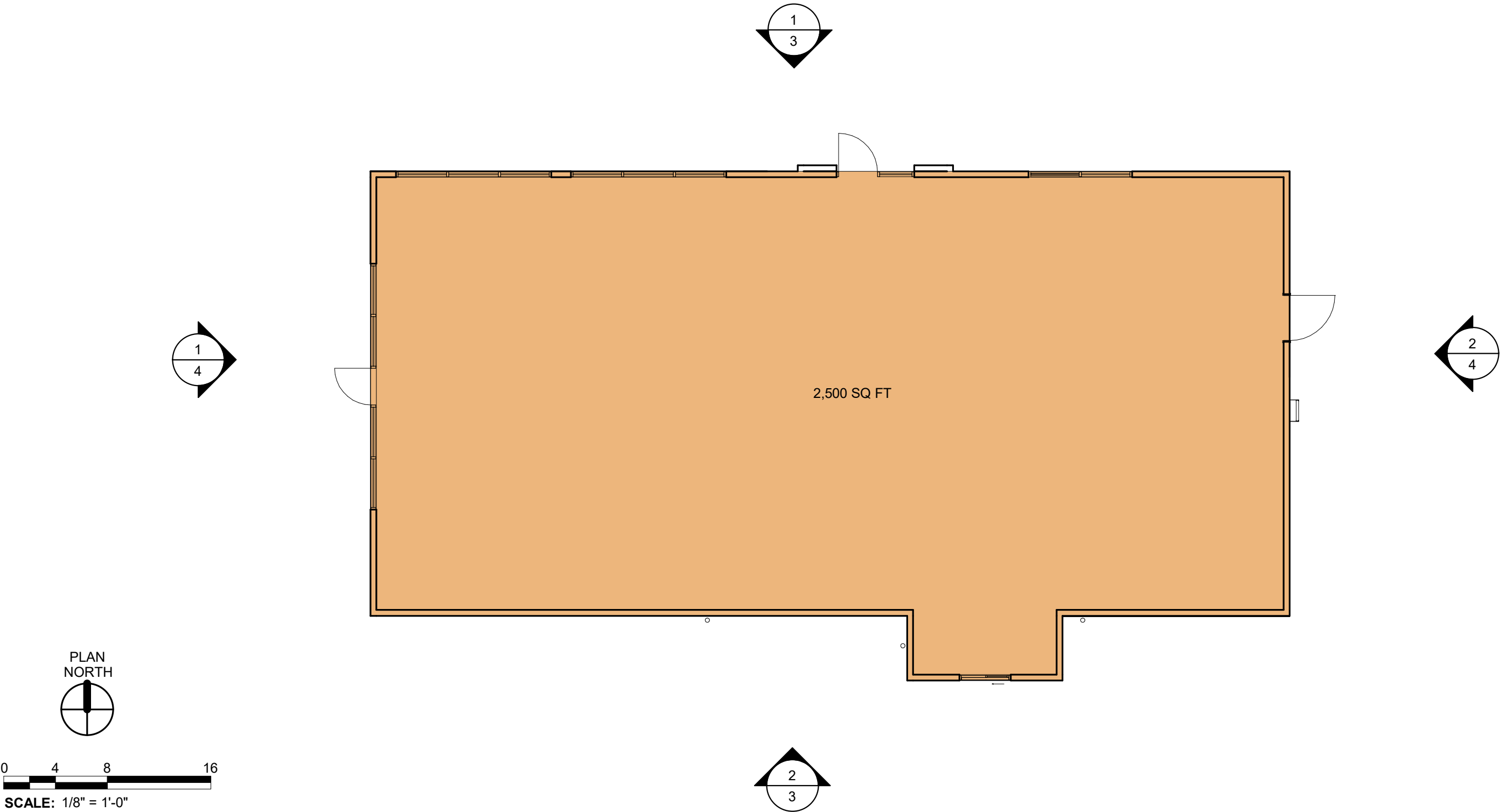


3D View 1

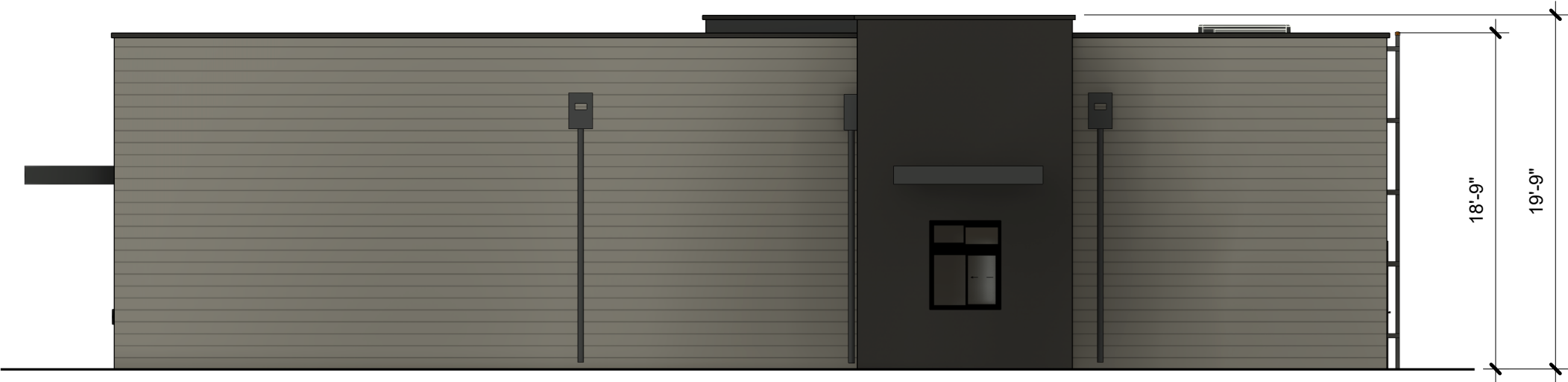


Site Zoning:	Community Business in Urban Center (CB-C)
Site Area:	78,511 SF
Building Height:	Limited by FAA and Fire Department regulations
Proposed Use:	Office/Retail Flex Space
Permitted Uses:	<p>This list contains some of the permitted uses. To see the complete list, please see chart 15.205.040 in the SeaTac Municipal Code.</p> <p>Equipment Rental Storage Professional Office Court Public Agency Office or Yard College/University Vocational/Technical School Hospital Medical Office/Outpatient Clinic Winery/Brewery/Distillery Auto Service Center Community Center Museum Religious Use Facility Assisted Living Facility Retail, General Restaurant Hostel/Hotel Utility Substation</p>
Parking:	<p>Professional Office: 1 per 300 SF Medical/Dental Lab: 1 per 300 SF Retail: 1 per 250 SF Restaurant: 1 per 150 SF Espresso Stand: 1 per 150 SF plus 3 stacking spaces with drive-through</p>
Stall Requirements:	<p>90 Degree Stall angle: Stall Width 8'-6" Stall Depth 18'-0" Two-Way Driveway 24'-0"</p>
Required Setbacks:	<p>Front: 0' min, 10' max Rear: N/A Side: N/A</p>
Maximum Lot Coverage:	75%

BUILDING B - CONCEPTUAL FLOOR PLAN



EXTERIOR ELVATIONS



NORTH ELEVATION

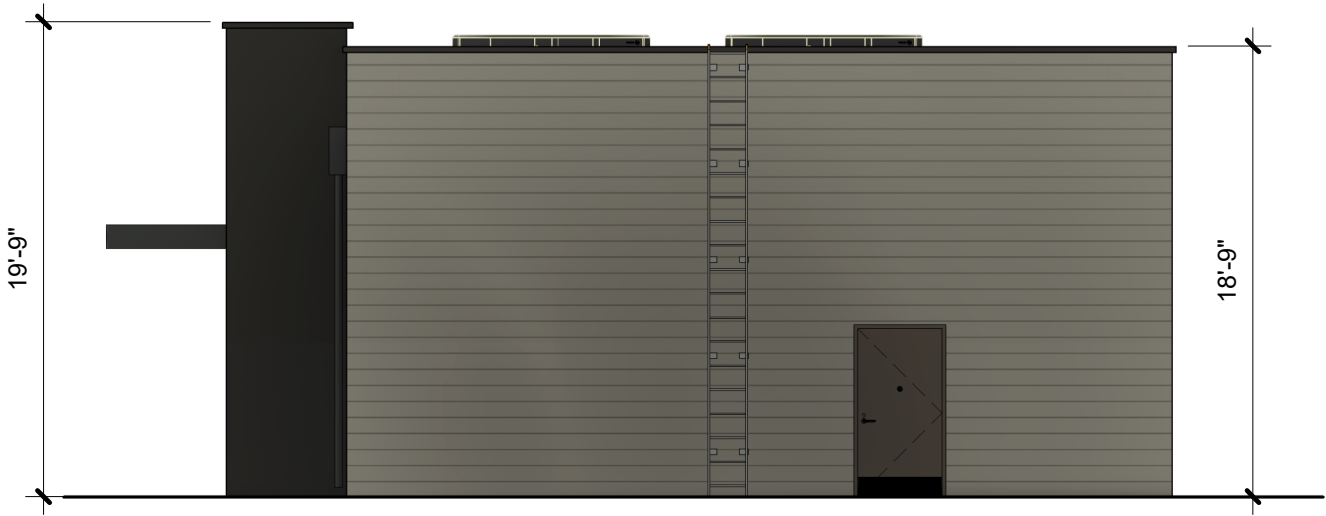


SOUTH ELEVATION

EXTERIOR ELEVATIONS



WEST ELEVATION



EAST ELEVATION