

EQUIPMENT SCHEDULE

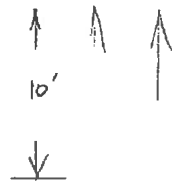
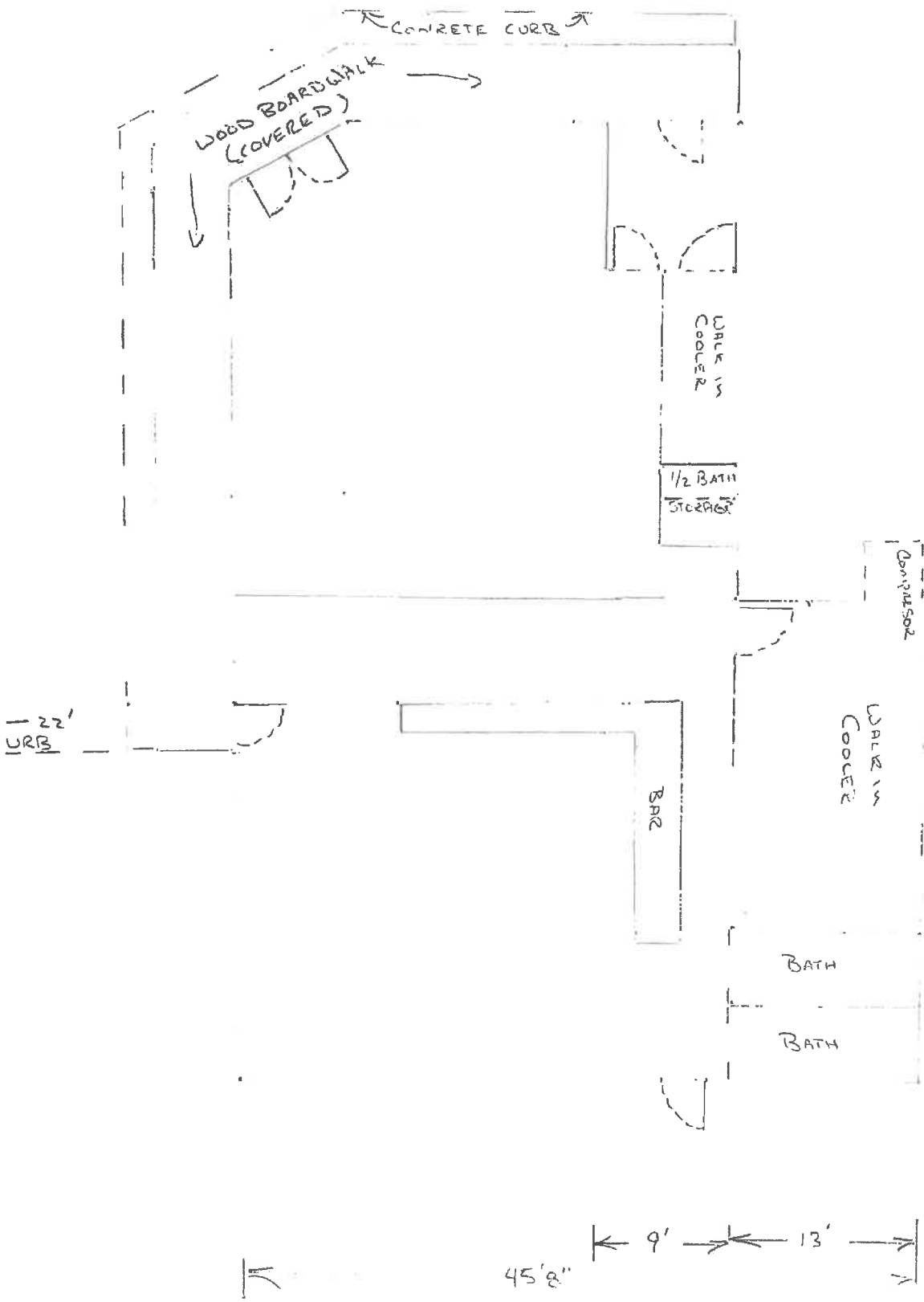
| ITEM NO. | QTY | MFR                    | MODEL NO.     | DESCRIPTION                      |
|----------|-----|------------------------|---------------|----------------------------------|
| 1        | 1   | GARLAND USR            | U18-6G24RS    | RANGE, 48" RESTAURANT, GAS       |
| 2        | 1   | FRYMASTER              | M35           | FRYER                            |
| 3        | 1   | CAPTIVEAIR             |               | EXHAUST HOOD                     |
| 4        | 1   | KROWNE                 | 21-38         | ICE BIN                          |
| 5        | 1   | KROWNE                 | 21-1C         | UNDERBAR SINK UNITS              |
| 6        | 3   | KROWNE                 | 21-GS81       | GLASS BACK                       |
| 7        | 2   | ELKAY FOODSERVICE      | EHS-144EDX    | HAND SINK                        |
| 8        | 1   | JOHN BOOS              | 38CS-184-2D18 | THREE (3) COMPARTMENT SINK       |
| 8.1      | 1   | FISHER                 | 34401         | PRE-RINSE                        |
| 8.2      | 1   | FISHER                 | 13289         | FAUCET                           |
| 9        | 1   | OK TYPHIC              |               | DISH STORAGE SHELVING            |
| 10       | 1   | OMA DISHMACHINES       | -1X           | DISHWASHER, UNDERCOUNTER         |
| 11       | 2   | ELKAY FOODSERVICE      | SLAMT-21X     | REFRIGERATED SORTING SHELF       |
| 12       | 1   | TRUE                   | TBR-3         | REFRIGERATED BACKBAR CABINET     |
| 12.1     | 1   | KRGRSHTM               |               | DOUBLE WALL SHELVES              |
| 13       | 1   | ELKAY FOODSERVICE      | TC16X20-0     | ONE (1) COMPARTMENT SINK         |
| 14       | 1   | FISHER                 | 13288         | FAUCET                           |
| 16       | 1   | TRUE                   | TS9L48-12     | REFRIGERATED SANDWICH UNIT       |
| 18       | 1   | TRUE                   | TWT-48F       | MOROTOP FREEZER                  |
| 18.1     | 1   | TRUE                   |               | DOUBLE WALL SHELVES              |
| 17       | 1   | TRUE                   | L49           | REACHIN REFRIGERATOR, 2 SECTIONS |
| 18       | 1   | OMA DISHMACHINES       | GL-X          | GLASS WASHER                     |
| 19       | 1   | TRUE                   | TD-24-7       | BOTTLE COOLER                    |
| 20       | 12  | OAK STREET             | SL2301        | BAR STOOL                        |
| 21       | 1   | MANITOWOC              | QD-0212A      | ICE CUBER WITH BIN               |
| 22       | 1   | CONTINENTAL COMMERCIAL |               | TRASH RECEPTACLE                 |
| 23       | 1   | OWNER                  |               | POS                              |
| 24       | 1   | PURVR                  |               | SODA SYSTEM                      |
| 25       | 1   | KRGRSHTM               |               | S/S PASS SHELF                   |
| 26       | 1   | KRGRSHTM               |               | 18 INCH DEEP EXPO COUNTER        |
| 28       | 1   | KRGRSHTM               |               |                                  |

DEEP LAKE STORE  
 PRELIMINARY LAYOUT  
 APRIL 10, 2013

$45'8" \times 64'3" = 2945$   
 $+ 13 \times 323" = 420$   
 $3364 \pm \text{sq ft.}$

1" = 10'

NORTH



32'



32'3"

64'3"

