



## **Hardware Installation**

Mount the counter at a height of 4 or 5 feet (can be mounted lower to count children). Avoid areas with air conditioning or heating vents. The counter detects movement of people or objects that emit infra-red heat compared to a cooler background. Maximum counting rate is one person per two seconds. This type of counter cannot count people shoulder to shoulder or in groups.

Maximum range is approximately 40 feet. Minimum distance is 2 feet.

- Install the batteries making **sure** to observe polarity (+ & -) markings on the battery holder.
- When it's time to change the batteries, a red LED will flash *once every two seconds*.
- The LED will flash *twice per second* if and when the date needs to be set.
- Go to software setup to initialize the counter.
- Mount the counter by removing the protective tape from the Velcro. Hold in place for thirty seconds.

Our counting system includes our EZ Counter Express reporting software. (Requires Windows XP, Vista or Windows 7 32/64 bit systems) or Windows 10. This allows the retrieval of data over a USB port. Creates graphs with time stamped events and exports the data to Excel. The software includes an embedded SQL data base that stores the data. NOTE: You must have Excel installed on your PC.

## **Software Installation**

### **Installing from CD ROM**

Insert the CD ROM into your CD ROM drive. Open to view files. Double click on the "SETUP" file

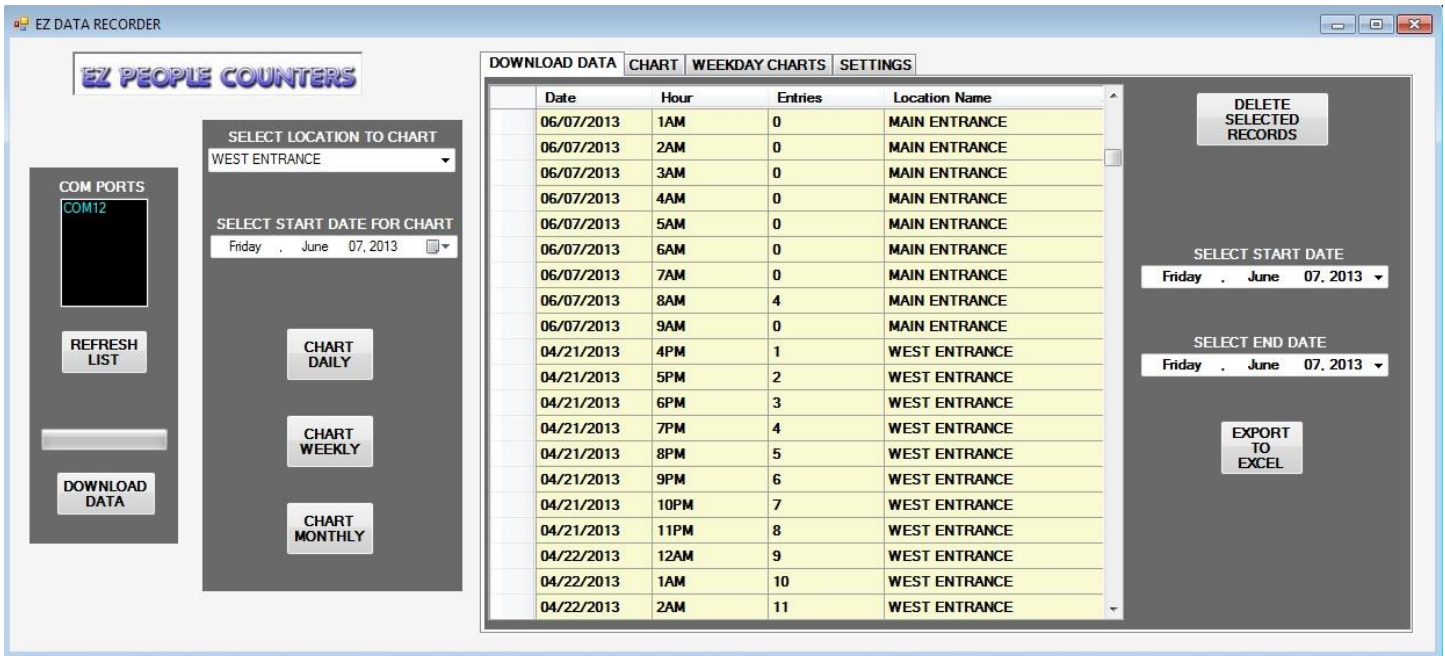
### **Run Software**

The data can be downloaded to a laptop or the counter can be removed from the wall and connected to a PC.

- Connect the 1/8" plug end of the interface cable to the jack on the top of the EZ-COUNTER.

- Connect the USB end of the interface cable provided to the computer's USB port.
- Click on the EZ Data Recorder icon on your desktop.

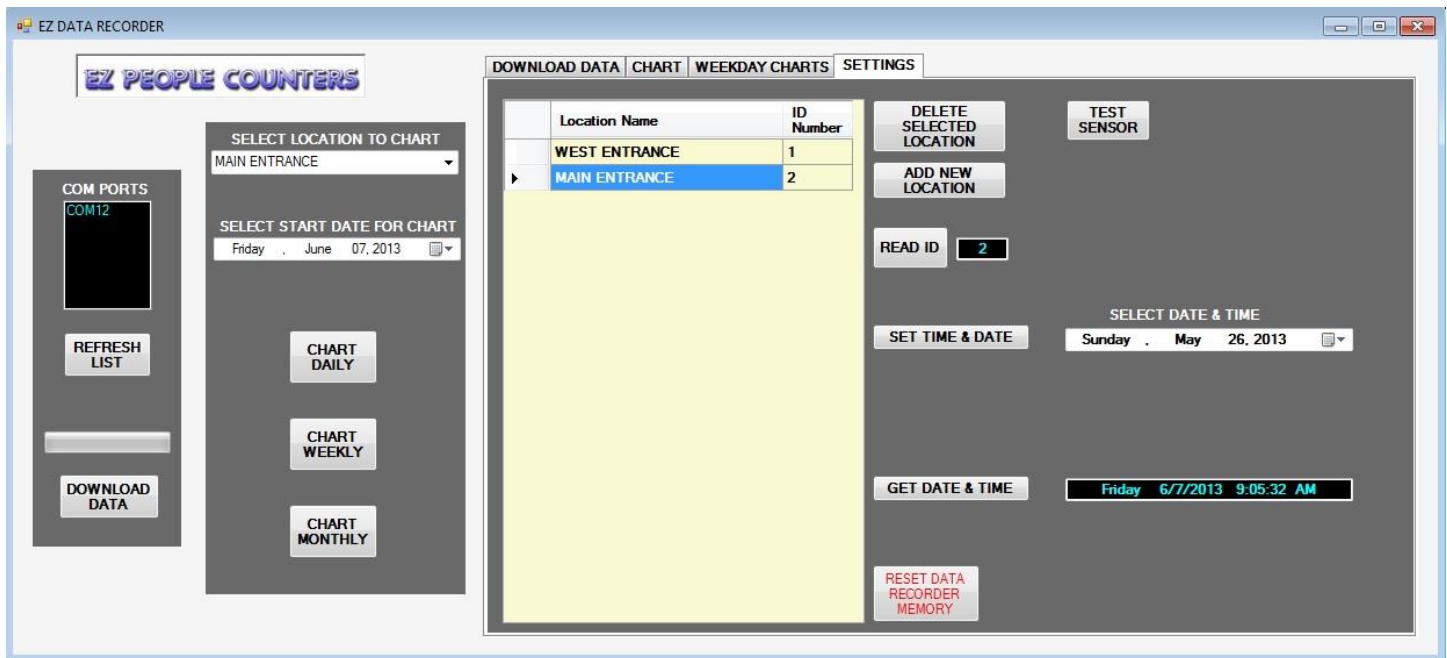
You will see the screen shown below.



The “COM PORTS” will list the active USB/COM ports on your PC. If none are listed, make sure the USB cable is plugged in and click on the “REFRESH LIST” button. If more than one port is being used, you will be prompted to select the COM port, by clicking on the COM port in the list. If you do not know which port to select, do the following:

Unplug the USB cable connected to the data recorder and click on the “REFRESH LIST” button. Plug the cable back in and click on the “REFRESH LIST” button. The cable port will be removed from the screen and then reappear. Take note of this port and select it from the list. **NOTE: It is sometimes necessary to manually install the USB driver. It is located on the software CD.**

- Click on the “SETTINGS” tab and you will see the screen shown below.



- Select “ADD NEW LOCATION”. You will be prompted to enter a location name. Example “Front Entrance”.
- The location will then be shown in the list. Each location will have its own unique ID. You can add multiple locations.
- Records can be deleted by selecting them and pressing “DELETE SELECTED LOCATION”.
- The current date & time will be shown in the calendar selection drop down box. If you want to set the date to something else, you can select it from the drop down.



- Select “SET DATE & TIME” This will set the Date & Time in the data recorder. The data recorder will not run correctly until this is initially set.
- Select “GET DATE & TIME” to read the setting that is currently in the data recorder.
- NOTE: After replacing batteries the date & time will need to be reset.

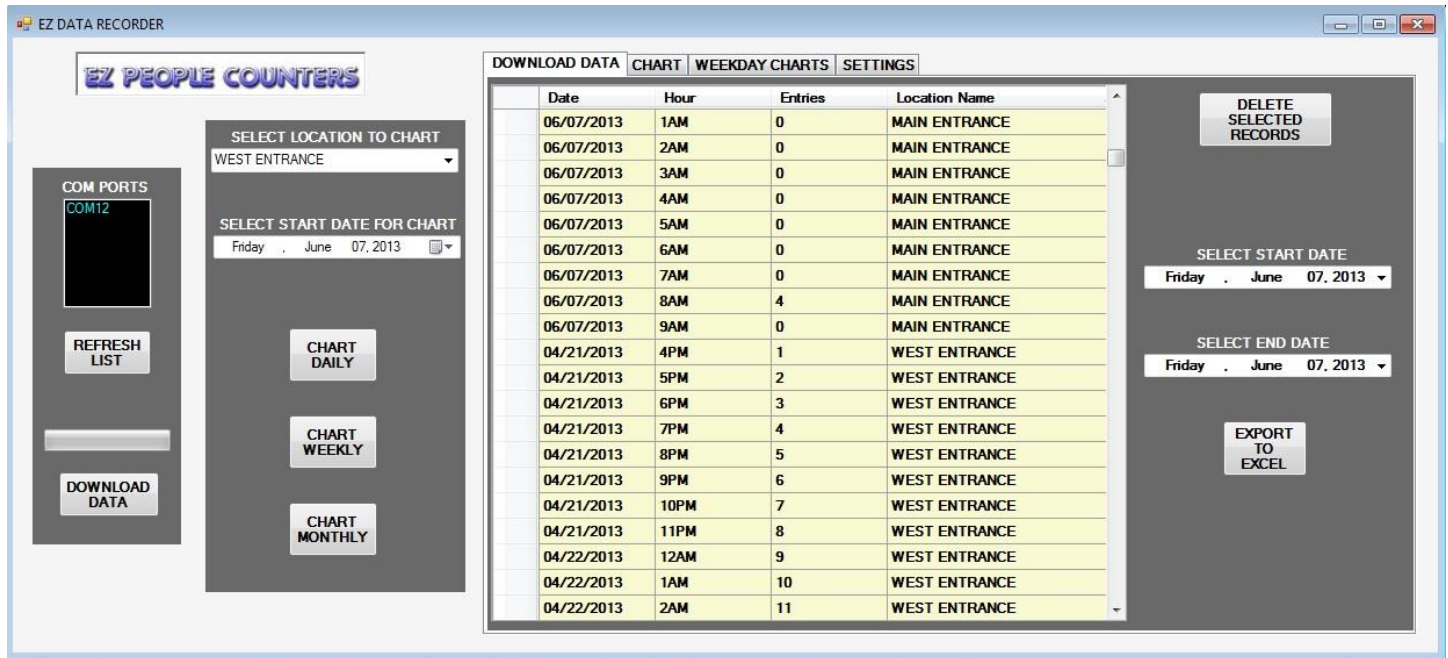
You can run a test by pressing the “TEST” button. Walk in front of the sensor or wave your hand across the sensor about 2 or 3 feet away, within a period of 10 seconds. A message will pop up informing you if the test was successful or not.

Pressing “**RESET DATA RECORDER MEMORY**” will cause the recorder to start recording and retrieving data at the start of the memory.

Unplug the USB cable from the PC then unplug the cable from the data recorder.

After the first hour has passed, (records data at the top of each hour), the data recorder can be plugged back in and data can be retrieved.

We recommend placing your hand over the sensor “EYE” while transporting the recorder and setting the unit face down on your desk in order to eliminate erroneous counts.



Plug the USB cable into the data recorder first then plug into your PC. Open the software.

Select the “DOWNLOAD DATA” button and the data will be retrieved. If the data was previously downloaded, it will be skipped to prevent duplicate records.

Records are stored in an embedded SQL database. The data recorder will store 35 days of data. After 35 days, the data is overwritten from the starting day. The database retains all the records that have been downloaded unless they are manually deleted.

Records can be deleted by selecting them and pressing “DELETE SELECTED RECORDS”.

You can export the records to Excel if you want to archive them. Select a start and an end date from the calendar drop down boxes and select “EXPORT TO EXCEL”. The excel file will open and you will be prompted to save and name the file upon closing.

**Unplug the data recorder as soon as you have downloaded the data.** This will save on battery power.

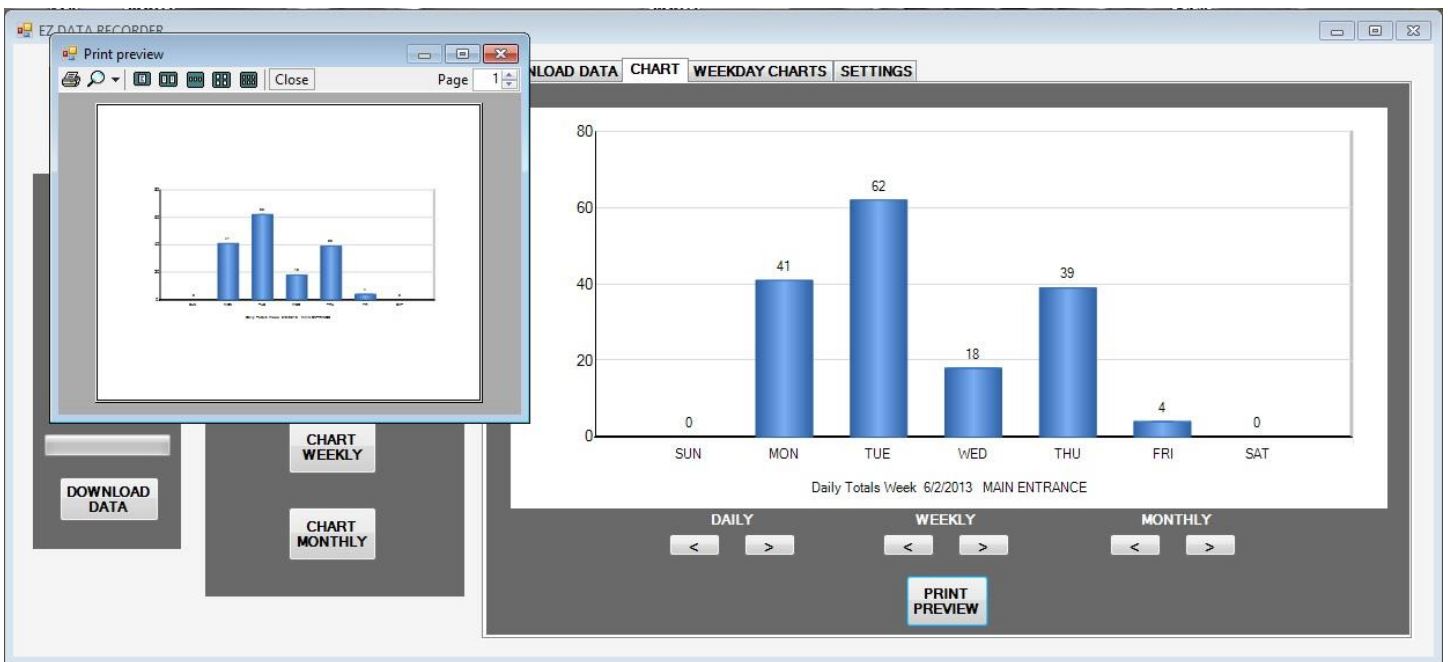
Once again place your hand over the sensor “EYE” while transporting.

To chart the data, select a location and start date. Select “CHART DAILY”, “CHART WEEKLY” OR “CHART MONTHLY”. This will open the chart screen.



You can navigate the days, weeks and months by using the navigation buttons.

Press "PRINT PREVIEW" to open the print preview screen. From this screen, you can print the graph.



Click on the "WEEKDAY CHARTS" tab and you will see the screen shown below.



Select a week from the "SELECT START DATE FOR CHART" calendar. You only need to select any day from the week you wish to chart. The software automatically determines the start day of the week (Sunday).

Press the "CREATE CHARTS" button and the entire week will be plotted. This allows you to see at a glance any trends.

You can navigate the weeks by using the navigation buttons.

## Warranty

This EZ People Counters product has a warranty against defects in material and workmanship for a period of 90 days from the date of shipment. During the warranty period, EZ People Counters, will at its option, either repair or replace products that prove to be defective. This warranty is extended to the original purchaser of the equipment only.

For warranty service or repair, the product must be properly packaged and returned to EZ People Counters. The purchaser shall prepay all charges for shipping to EZ People Counters and EZ People Counters will pay the shipping charges to return the product to the purchaser as long as the product is shipped within the United States. If the product is shipped outside the United States, the purchaser shall pay all shipping charges, duties and taxes.

## Limitation

The forgoing warranty shall not apply to defects or damage resulting from improper use or misuse, unauthorized repair, tampering, modification, improper connection, or operation outside the electrical or mechanical specifications of the product. The warranty does not cover acts of God, such as fire, flood, lightening etc. This warranty does not cover damage to property, equipment, direct or indirect consequential or incidental damage including damage for loss of business or business interruption arising out of misuse of this product.

Under no circumstances will the liability of EZ People Counters exceed the original purchase price of the product. No other warranty is expressed or implied.

Some jurisdictions may not allow the exclusion of limitation of liability for consequential or incidental damage.

**EZ People Counters**  
**(330) 240-6983**  
**[www.ezpeoplecounters.com](http://www.ezpeoplecounters.com)**