



# Incorporate Vail Arizona? Town Hall

August 17

# Agenda

- • Welcome
- Introduction of Incorporate Vail, Arizona (?)
- What if we Do Nothing
- What Has To Be Done Now
- New Website
- Questions and Answers
- Closing Remarks

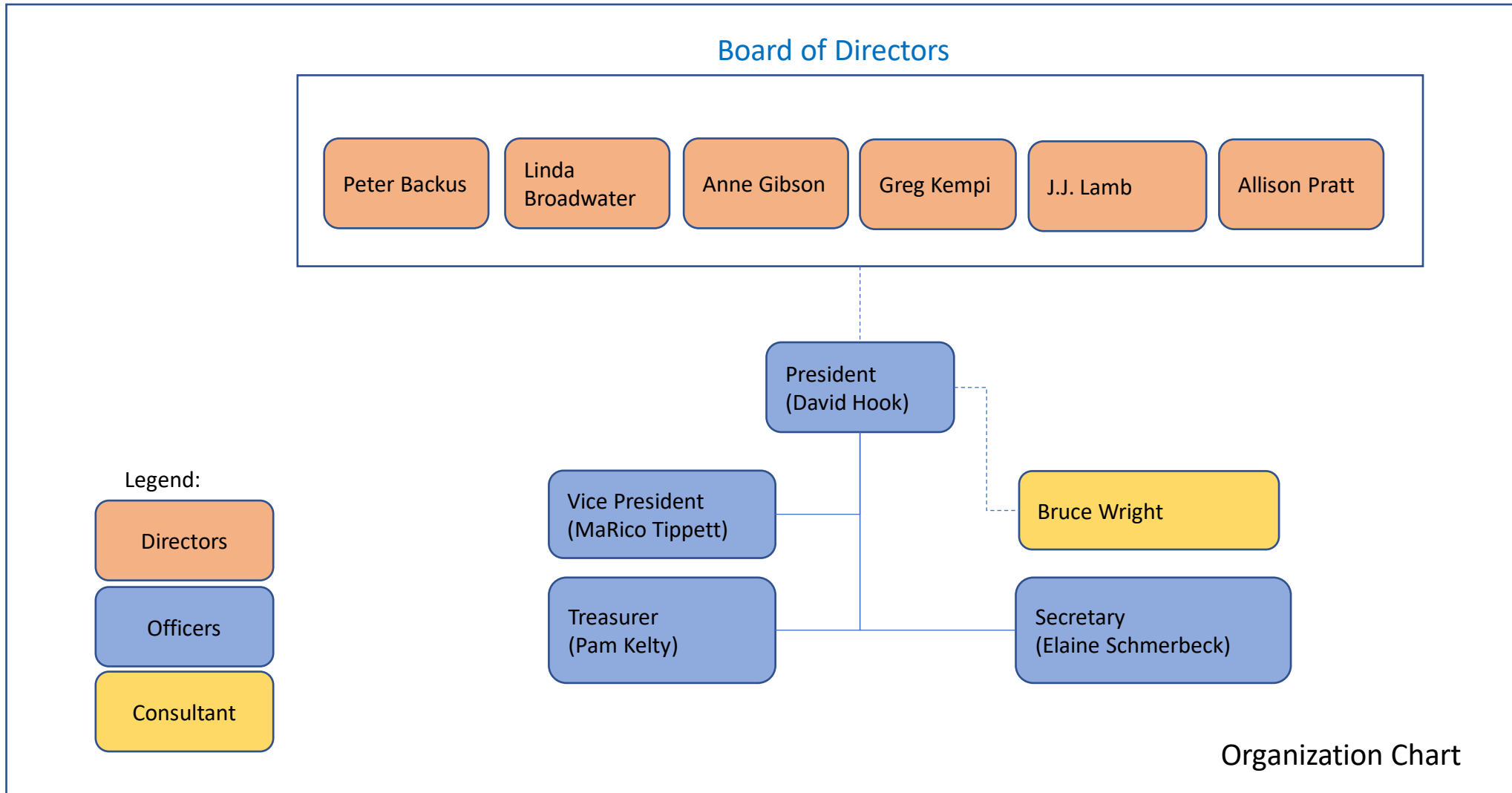
# Welcome

- President's Welcome and Thank You Message
- Posting of the Colors
  - Conducted by our Cienega High School Navy Junior Reserve Officers Training Corps (NJROTC) Color Guard

# Agenda

- Welcome
- • Introduction of Incorporate Vail, Arizona (?)
- What if we Do Nothing
- What Has To Be Done Now
- New Website
- Questions and Answers
- Closing Remarks

# Incorporate Vail, Arizona (?)



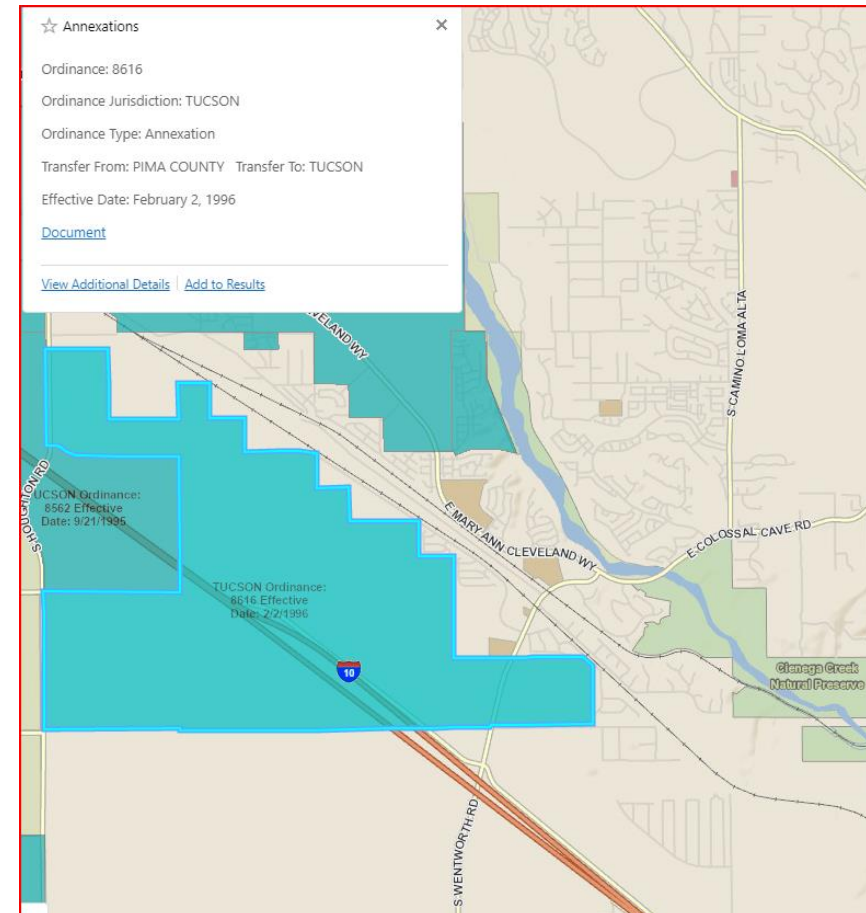
# Incorporate Vail, Arizona (?)

- Video – “Why You Are Here Tonight”
- Listening to the Vail Community
- Mission Statement
  - To explore with community input and participation the viability and interest of incorporating Vail

# Annexation

- Annexation is the act or an instance of annexing, or adding to something larger, especially the incorporation of new territory into the domain of a city, county or state

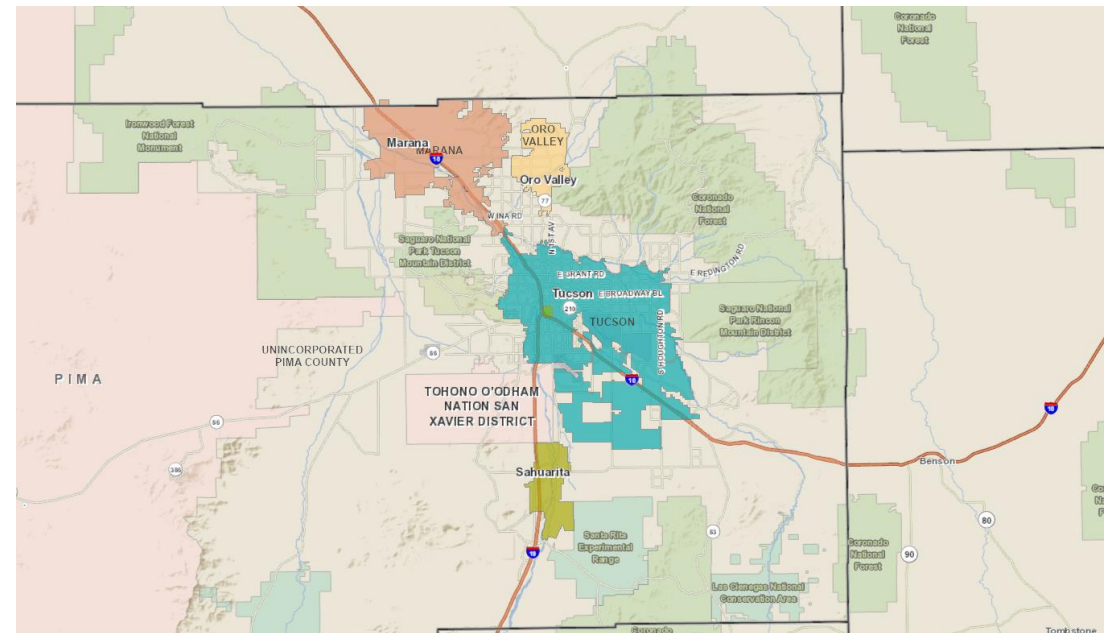
## City of Tucson Annexation (1996) near Vail



# Incorporation

- Incorporation means that a community of homes and has come together to form a city or town. The people who live there are then able to make more decisions about what happens to their city or town

Incorporated Cities and Towns in Pima County

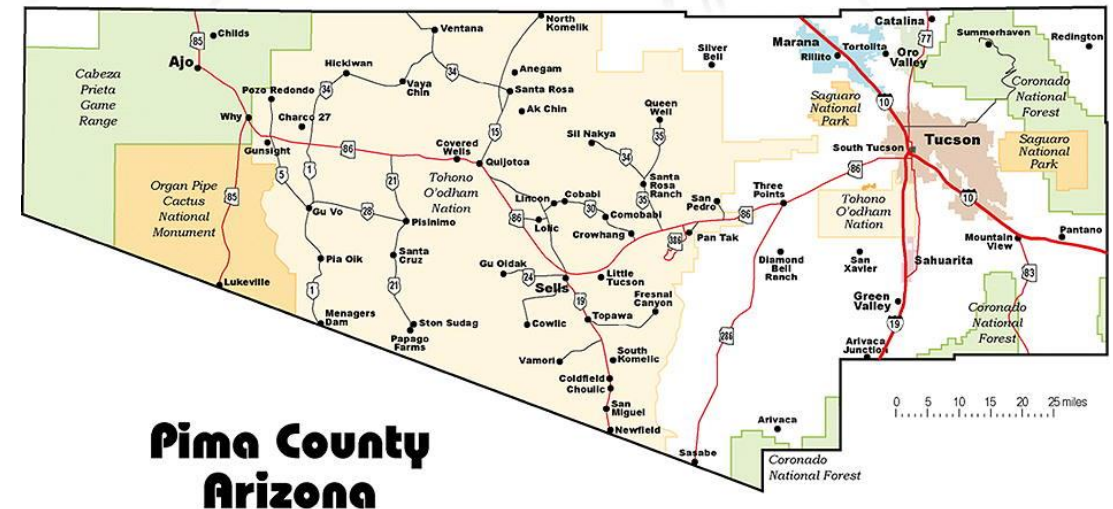




# Unincorporated

- If a town is unincorporated, it means it does not have a local government. Unincorporated communities exist “by tradition.” These communities typically do not have elected officials at the town level.
- Since unincorporated communities are not officially considered to be municipal areas of their own accord they often act as a part of a larger municipality, such as a county or city. The town will typically be bound to the laws of the county in which it lies

Vail is an Unincorporated Area within Pima County



Vail is governed by the five members of the Pima County Board of Supervisors

# Feasibility Study

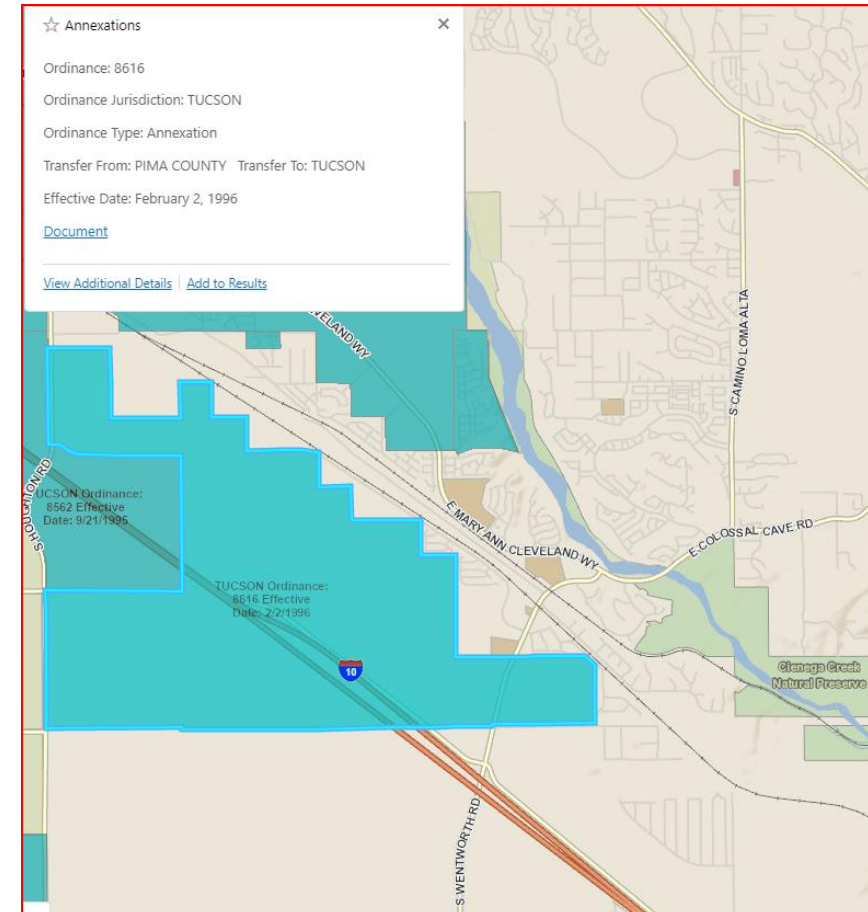
- A feasibility study is an assessment of the practicality of a proposed plan or project. A feasibility study analyzes the viability of a project to determine whether the project or venture is likely to succeed
- Our **feasibility study** will estimate the ability of the proposed city or town of Vail to meet its expenditures with available revenue sources
- The feasibility study results will be available in **November**

# Agenda

- Welcome
- Introduction of Incorporate Vail, Arizona (?)
- • What if We Do Nothing
- What Has To Be Done Now
- New Website
- Questions and Answers
- Closing Remarks

# City of Tucson Annexation of Pima County Land

- In the early 1980s, Tucson city limits were west of Houghton road.
- Now, after **seven annexations** from Pima County, Tucson city limits are within blocks of Cienega High School, and cross Colossal Cave Road in one area
- The City of Tucson did nothing wrong, but because we weren't incorporated, we had no voice in the matter



# Regional Transportation Authority (RTA)

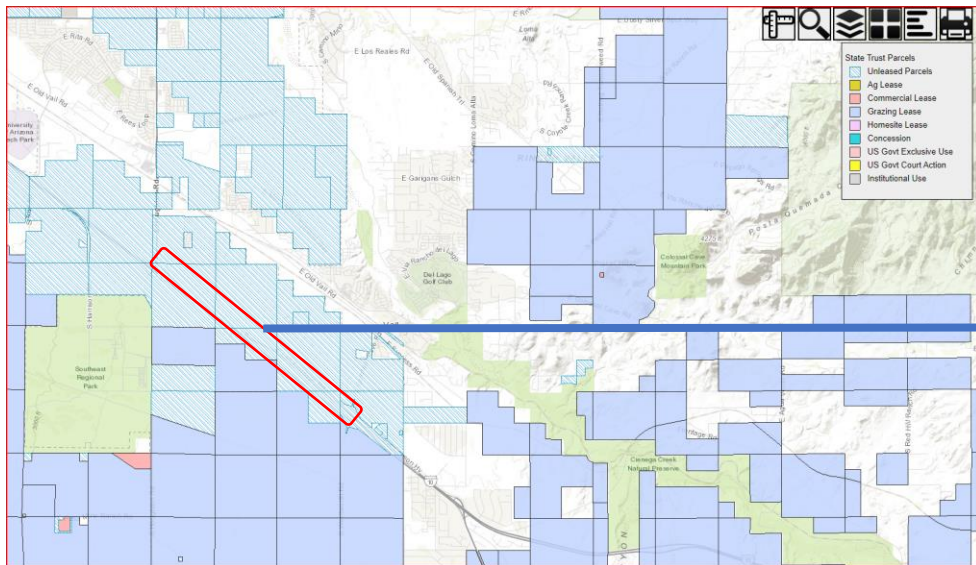


- The RTA Board is responsible for fiscal management and implementation of the voter-approved, 20-year multimodal transportation plan for Pima County
- The nine-member RTA Board is made up of chief elected officials from local, tribal and state governments
  - Arizona State Transportation Board, Pima County, South Tucson, Tucson, Marana, Oro Valley, Sahuarita, the Pascua Yaqui Tribe and Tohono O'odham Nation
- **Unincorporated Vail has no Seat on the RTA Board**

# State Trust Land Rezoning

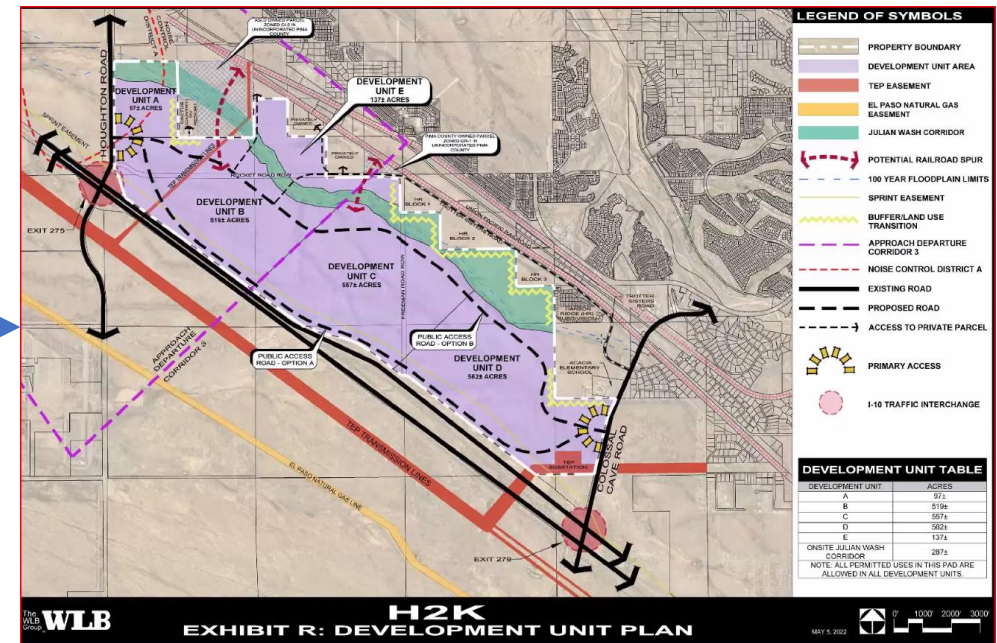
- City of Tucson has jurisdiction to rezone Arizona State Trust Land into an Industrial Park, adjacent to Vail

State Trust Land Parcels



City of Tucson  
C9-21-23 H2K  
Rezoning

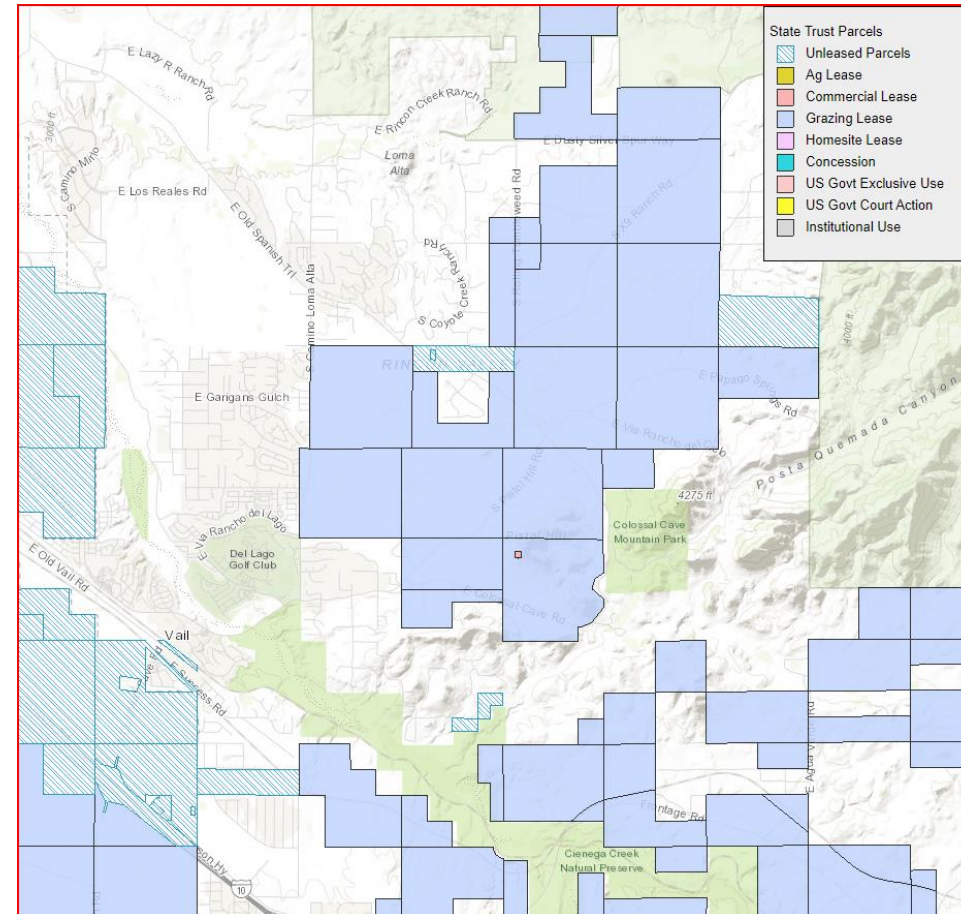
Industrial Park Development Plan



Without State Trust Land Jurisdiction, the Vail Community Has Limited Input to Rezoning Measures

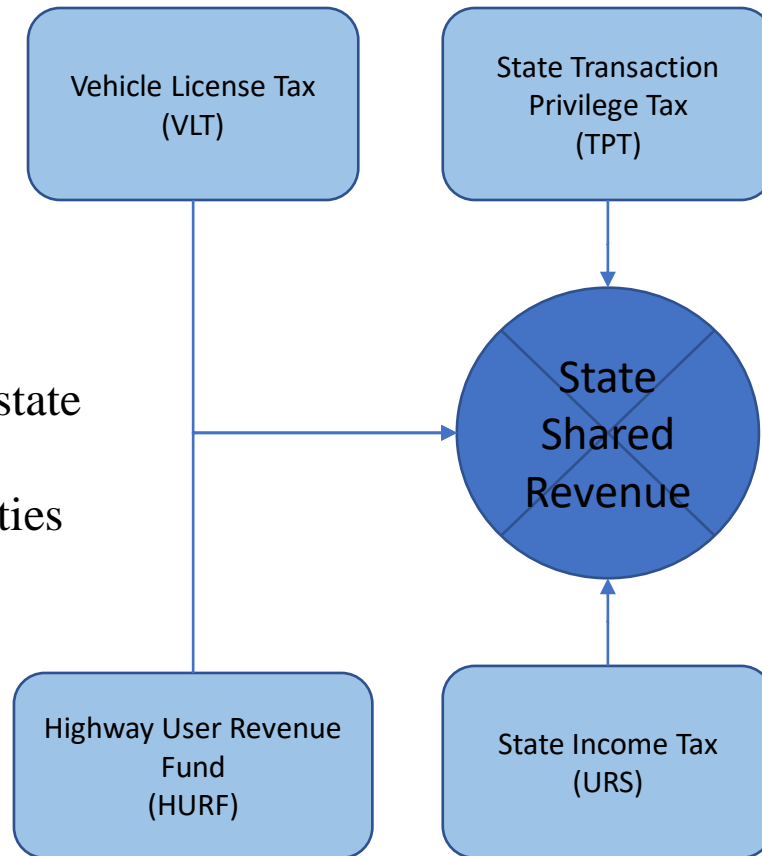
# Arizona State Trust Land Within the Vail Community

- The Arizona State Land Department (ASLD) oversees the leasing and sale of land within the greater Vail area
- We have lots of open space, but in reality, we don't. **Anyone can apply to the ASLD and make their case for how better the land may be used. If the ASLD agrees, the land may be sold at auction**

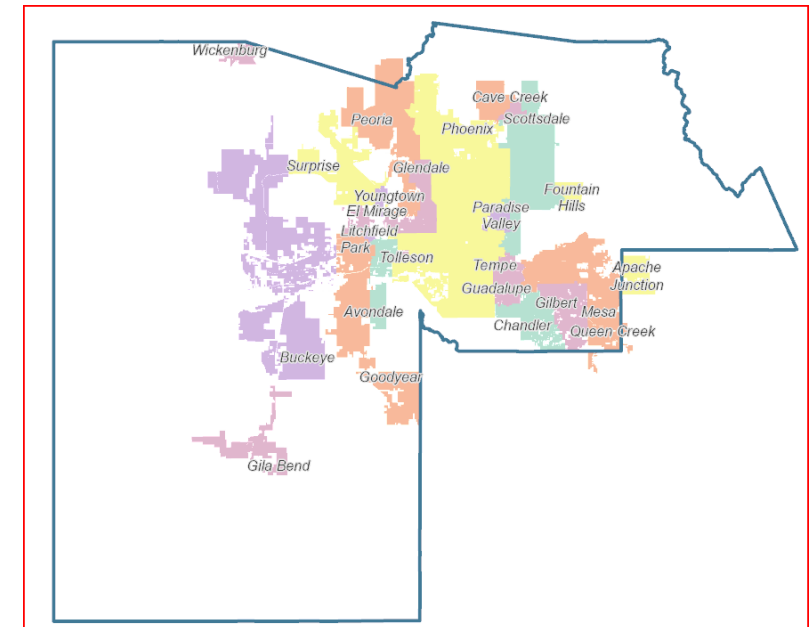


# State Shared Revenue

Arizona has a shared revenue program for distribution of certain state revenues to cities and towns, as well as counties



Maricopa county receives the bulk of funding due to the large number of incorporated cities and towns



Pima county receives less funding due to more open space and less incorporated areas



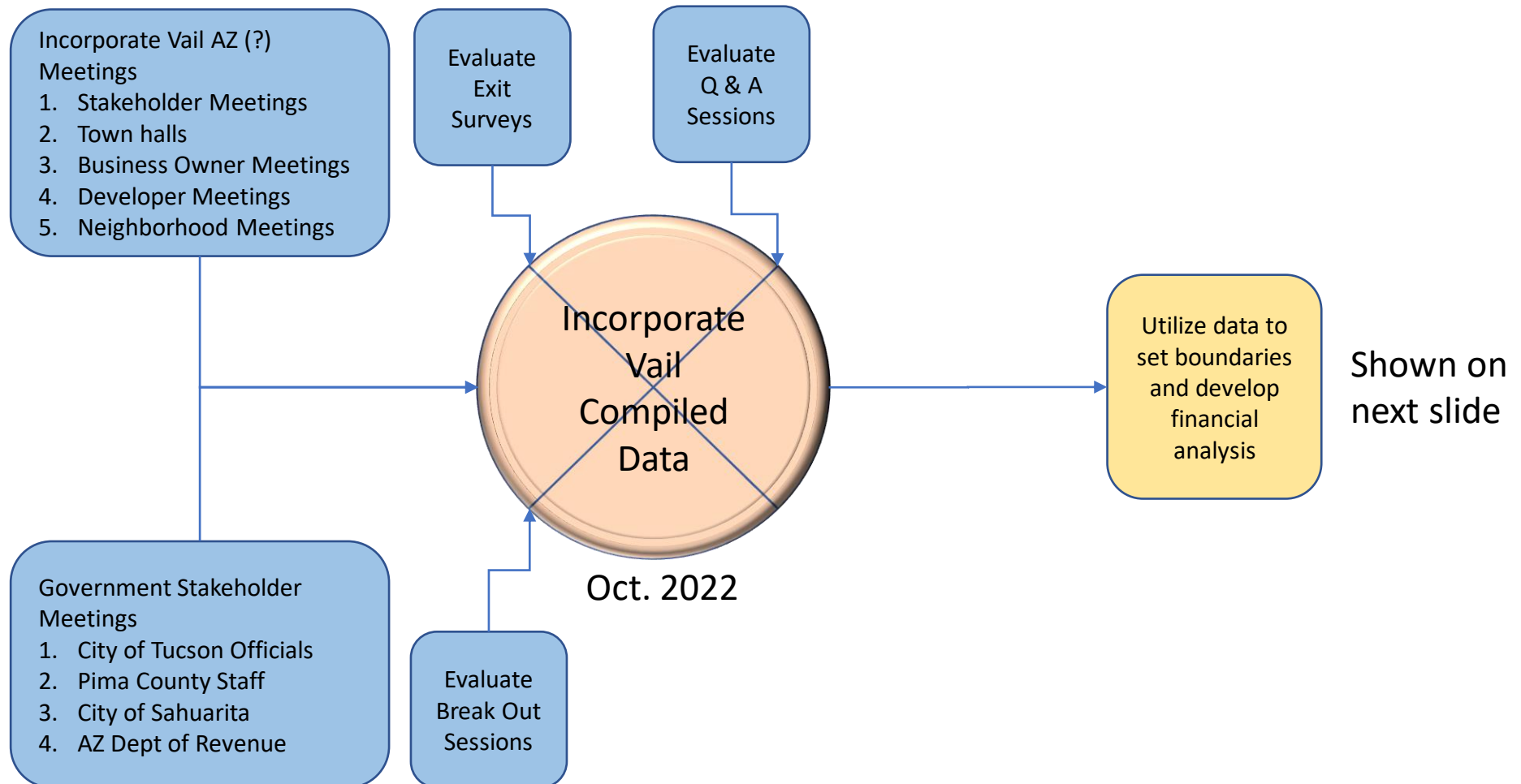
# Agenda

- Welcome
- Introduction of Incorporate Vail, Arizona (?)
- What if we Do Nothing
- • What Has To Be Done Now
- New Website
- Questions and Answers
- Closing Remarks

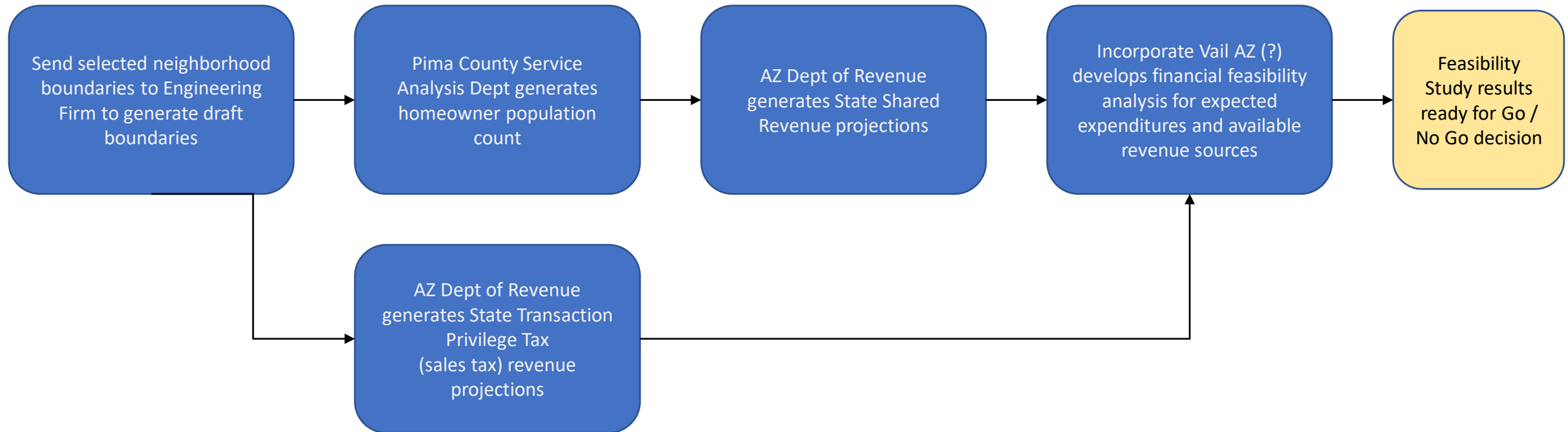
# Stakeholder Data Gathering

- Vail Residents
  - Wants and Don't Wants
- Officials from the City of Tucson
  - Resolution from Mayor and Council for Vail to incorporate
  - Information on contractual services for law enforcement and transportation
- Pima County Staff
  - More information on contractual services for law enforcement and transportation
- Officials from City of Sahuarita
  - Long term plans regarding Vail area
- Arizona Dept of Revenue
  - Financial projections based on incorporated Vail boundaries

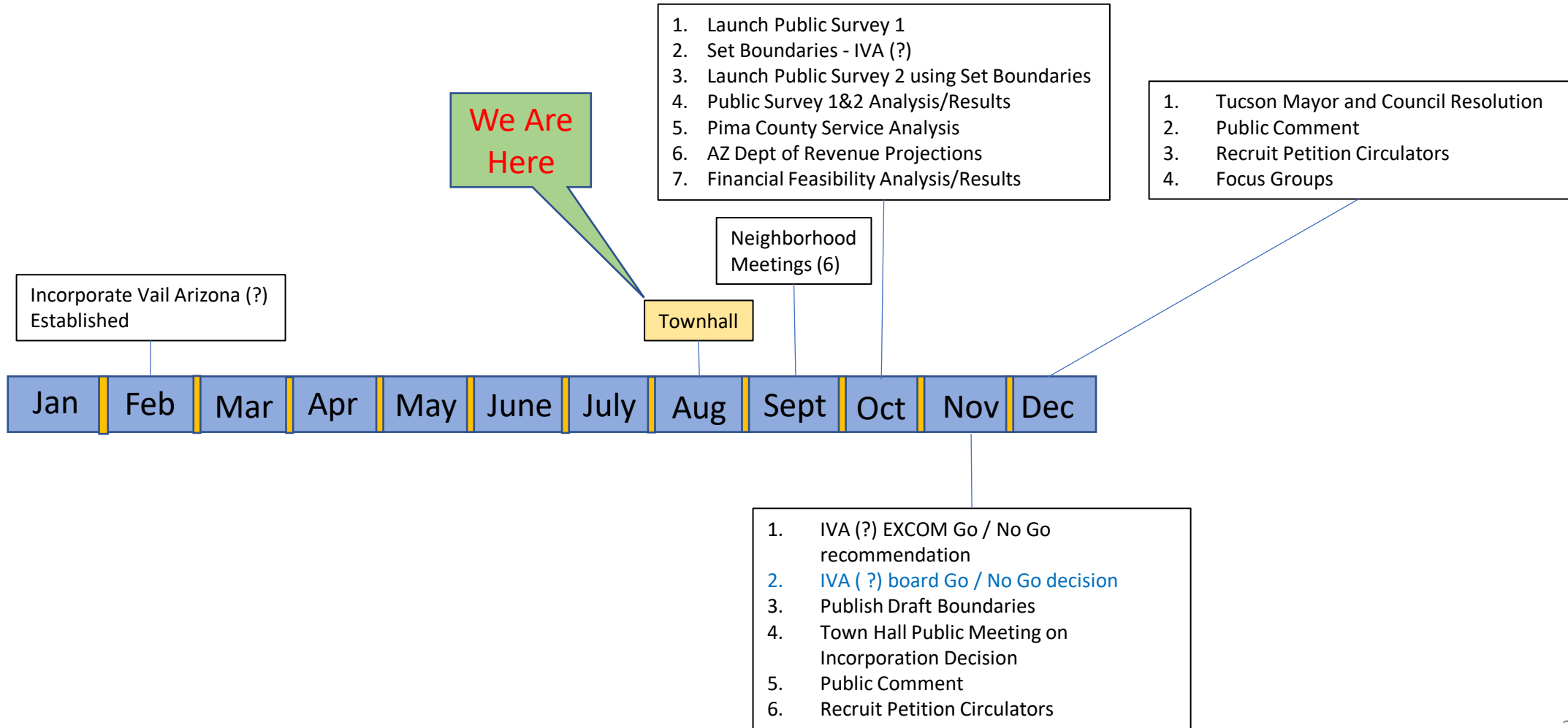
# Compile the Data



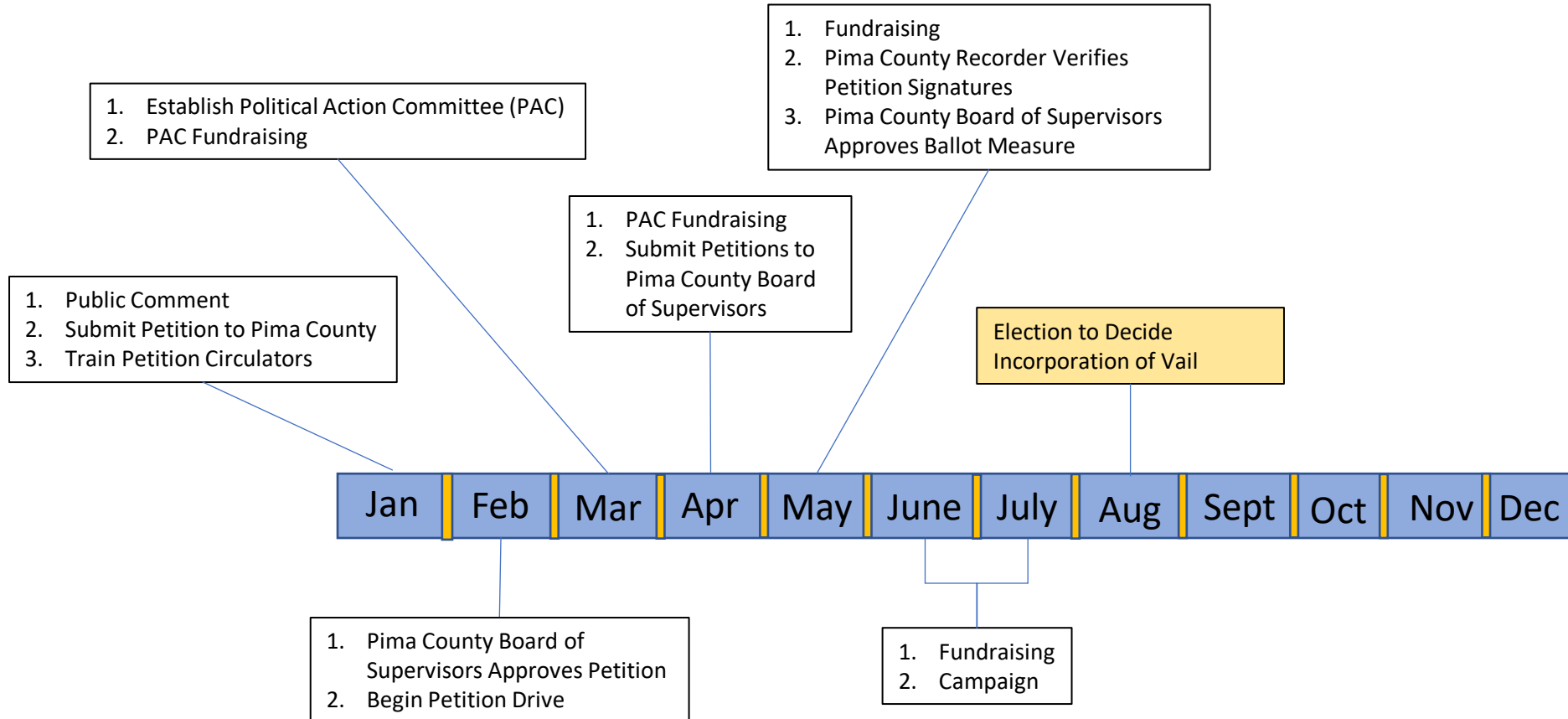
# Develop Boundaries And Financial Feasibility Data



# Greater Vail Area Community Incorporation Timeline (2022)



# Greater Vail Area Community Incorporation Timeline (2023)

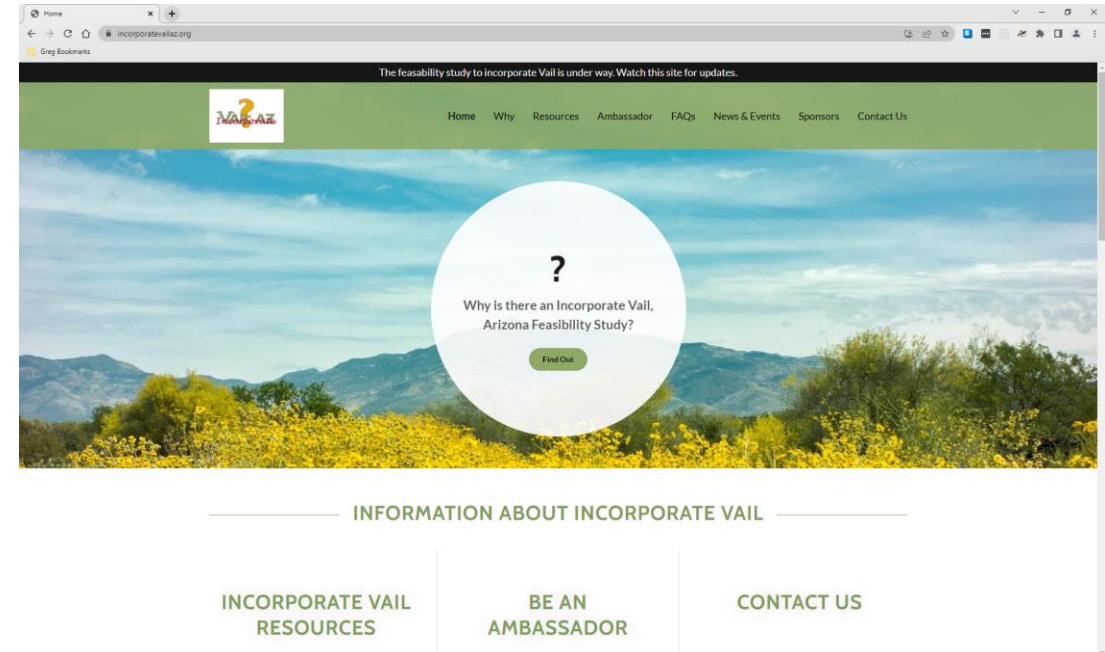


# Agenda

- Welcome
- Introduction of Incorporate Vail, Arizona (?)
- What if we Do Nothing
- What Has To Be Done Now
- • New Website
- Questions and Answers
- Closing Remarks

# New Website - [incorporatevailaz.org](http://incorporatevailaz.org)

- Our website was designed by webmaster **Rita Schaaf** who volunteered her time to complete this important project
- Please visit our website often to stay up to date on the Vail community's incorporation feasibility study





# Agenda

- Welcome
- Introduction of Incorporate Vail, Arizona (?)
- What if we Do Nothing
- What Has To Be Done Now
- New Website
- • Questions and Answers
- Closing Remarks

# Questions and Answers – Open Microphone

- We have four Cienega students carrying microphones who will be the runners to your set of tables
- At your table are 3 x 5 cards and pens. The cards are for questions you may have if you don't want to speak. We will ask and respond to your question for you
- Please raise your hand to ask your question into the microphone.
  - Please start with your **Name and Neighborhood**

# Agenda

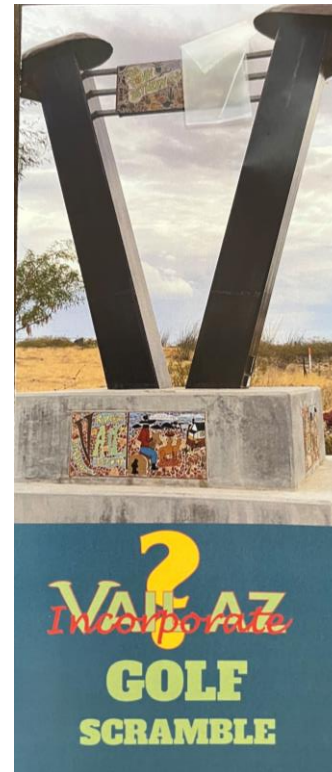
- Welcome
- Introduction of Incorporate Vail, Arizona (?)
- What if we Do Nothing
- What Has To Be Done Now
- New Website
- Questions and Answers
- • Closing Remarks

# Golf Scramble Fundraiser

Golf Scramble Fundraiser  
Del Lago Golf Course

Saturday Sept 24, 2022

Please join us at our fundraising event by visiting our website [incorporatevailaz.org](https://incorporatevailaz.org) to register



<https://incorporatevailarizona-bloom.kindful.com/e/incorporate-vail-arizona-golf-tournament>

# Closing Remarks

- Please fill out your exit surveys and leave them in the box on one of the tables near the entrance
- Thank you for coming!