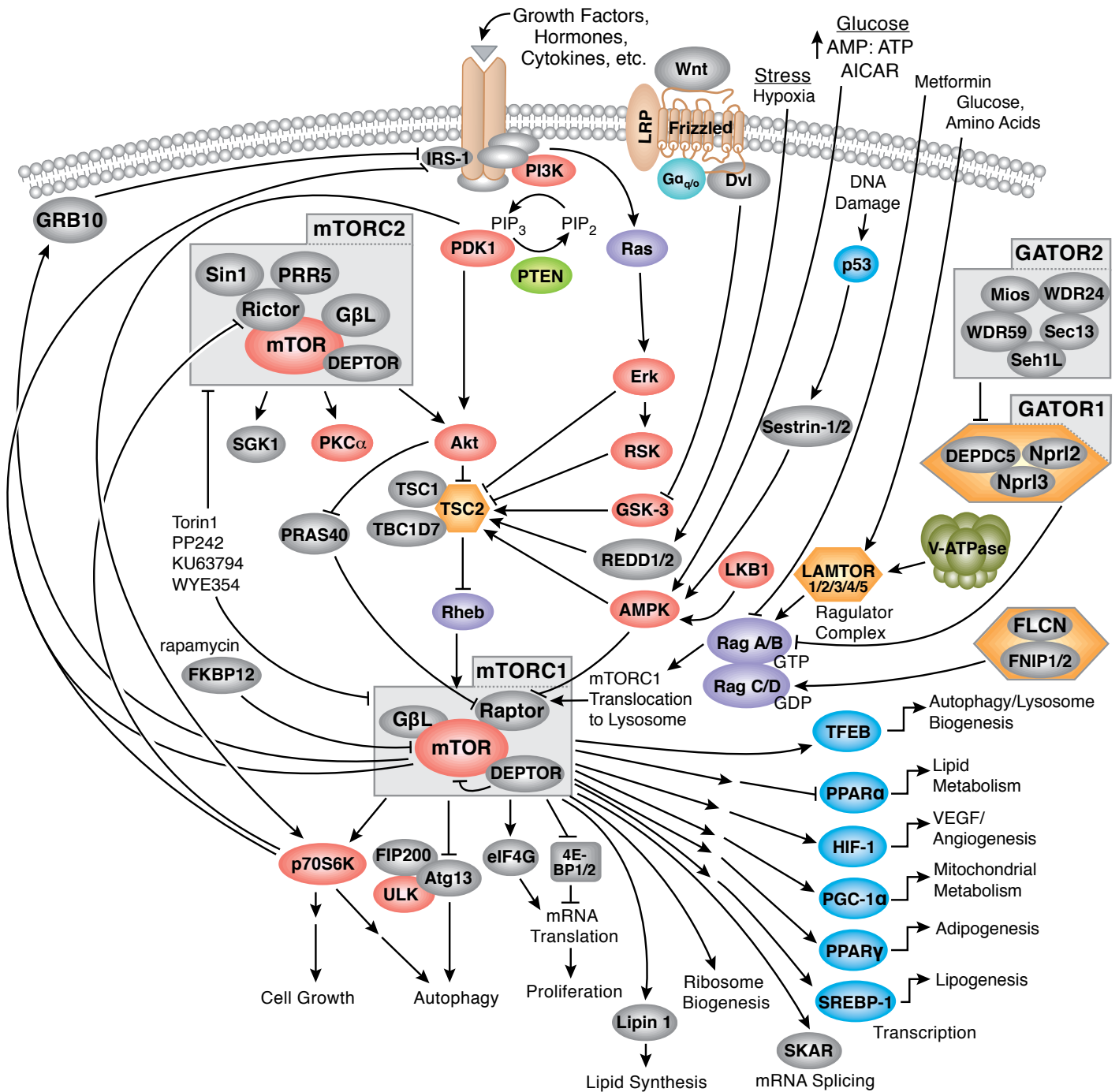


mTOR Signaling



For pathway key and background please visit:

www.cellsignal.com/mTOR

Key Products for...

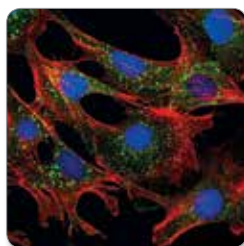
Visit www.cellsignal.com/mTORlist for full listing of antibodies, related kits, and reagents.

ANTIBODIES

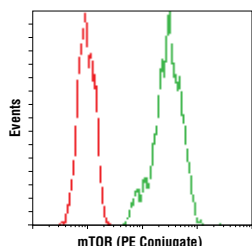
| | APPLICATIONS | REACTIVITY |
|--|--------------------------------|---|
| #9644 4E-BP1 (53H11) Rabbit mAb | WB, IP, IHC-P, IF-IC, F | H, M, R, Mk |
| #13443 Phospho-4E-BP1 (Ser65) (D9G1Q) Rabbit mAb | WB, IP | H, Mk |
| #2855 Phospho-4E-BP1 (Thr37/46) (236B4) Rabbit mAb | WB, IHC-P, IF-IC, F | H, M, R, Mk, Dm |
| #4071 Phospho-Akt (Ser473) (D9E) XP® Rabbit mAb (Alexa Fluor® 488 Conjugate) | F | H, M, R, Hm, Mk, Dm, Z, B, (C, X, Dg, Pg) |
| #4060 Phospho-Akt (Ser473) (D9E) XP® Rabbit mAb | WB, IP, IHC-P, IHC-F, IF-IC, F | H, M, R, Hm, Mk, Dm, Z, B, (C, X, Dg, Pg) |
| #13038 Phospho-Akt (Thr308) (D25E6) XP® Rabbit mAb | WB, IP, IF-IC, F | H, M, R, Mk |
| #4691 Akt (pan) (C67E7) Rabbit mAb | WB, IP, IHC-P, IF-IC, F | H, M, R, Mk, Dm, (Pg) |
| #4188 Phospho-AMPKα (Thr172) (D79.5E) Rabbit mAb | WB | H, M, R, Dm, Sc, (B) |
| #5831 AMPKα (D5A2) Rabbit mAb | WB, IP | H, M, R, Mk, B |
| #4150 AMPKβ1/2 (57C12) Rabbit mAb | WB, IHC-P, IF-IC, F | H, M, R, Hm, Mk |
| #13468 Atg13 (E1Y9V) Rabbit mAb | WB, IP, IF-IC | H |
| #11816 DEPTOR/DEPDC6 (D9F5) Rabbit mAb | WB, IP, IHC-P | H, R, Mk |
| #3227 GβL Antibody | WB, IHC-P | H, Mk |
| #3274 GβL (86B8) Rabbit mAb | WB, IP | H, M, R, Mk |
| #12456 GSK-3β (D5C5Z) XP® Rabbit mAb | WB, IP, IHC-P, IF-IC, F | H, M, R, Mk |
| #5558 Phospho-GSK-3β (Ser9) (D85E12) XP® Rabbit mAb | WB, IP, IF-IC, F | H, M, R, Hm |
| #6935 Hamartin/TSC1 (D43E2) Rabbit mAb | WB, IP | H, M, R |
| #14179 HIF-1α (D2U3T) Rabbit mAb | WB, ChIP | H, M, R, Mk |
| #3434 Hydroxy-HIF-1α (Pro564) (D43B5) XP® Rabbit mAb | WB, IP, IF-IC | H, (M, R, Mk, C, X, Z, Pg) |
| #3407 IRS-1 (D23G12) Rabbit mAb | WB, IP | H, M, R, Mk |
| #8975 LAMTOR1/C11orf59 (D11H6) XP® Rabbit mAb | WB, IP, IHC-P, IF-IC | H, M, R, Mk |
| #14906 Lipin 1 (D2W9G) Rabbit mAb | WB, IP, IF-IC | H, M |
| #13031 LKB1 (D60C5F10) Rabbit mAb (IHC Formulated) | IHC-P | H, M, Mk |
| #3047 LKB1 (D60C5) Rabbit mAb | WB | H, M, R, Mk |
| #3482 Phospho-LKB1 (Ser428) (C67A3) Rabbit mAb | WB | H, M, R, Mk |
| #15006 mTOR (7C10) Rabbit mAb (PE Conjugate) | F | H, M, R, Mk, (Hr) |
| #2983 mTOR (7C10) Rabbit mAb | WB, IHC-P, IF-IC, F | H, M, R, Mk, (Hr) |
| #2976 Phospho-mTOR (Ser2448) (49F9) Rabbit mAb (IHC Specific) | IHC-P, IHC-F | H, (M, R) |

ANTIBODIES

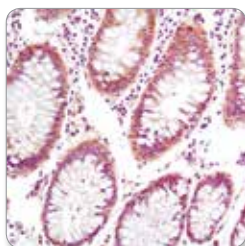
| | APPLICATIONS | REACTIVITY |
|--|----------------------|---|
| #5536 Phospho-mTOR (Ser2448) (D9C2) XP® Rabbit mAb | WB, IP, IF-IC | H, M, R, Mk, (R, C, Pg, Hr) |
| #2708 p70 S6 Kinase (49D7) Rabbit mAb | WB, IHC-P | H, M, R, Mk |
| #5662 PDK1 (D37A7) Rabbit mAb | WB | H, M, R, Hm, Mk |
| #3438 Phospho-PDK1 (Ser241) (C49H2) Rabbit mAb | WB, IP | H, M, R |
| #4249 PI3 Kinase p110α (C73F8) Rabbit mAb | WB, IP, IHC-P | H, M, R, B |
| #4257 PI3 Kinase p85 (19H8) Rabbit mAb | WB, IP | H, M, R, (C) |
| #2435 PPARγ (C26H12) Rabbit mAb | WB, IHC-P, IF-IC | H, M, (R) |
| #2691 PRAS40 (D23C7) XP® Rabbit mAb | WB, IP, IHC-P | H, M, R, Mk |
| #5936 Phospho-PRAS40 (Ser183) Antibody | WB, IP | H, M, (R) |
| #13175 Phospho-PRAS40 (Thr246) (D4D2) XP® Rabbit mAb | WB, IP, IHC-P | H, M, R, Mk |
| #9188 PTEN (D4.3) XP® Rabbit mAb | WB, IP, IHC-P | H, M, R, Mk, Dg, (C) |
| #9549 Phospho-PTEN (Ser380/Thr382/383) (44A7) Rabbit mAb | WB | H, M, R, Mk, (C) |
| #4357 RagA (D8B5) Rabbit mAb | WB, IP | H, M, R, Mk |
| #8150 RagB (D18F3) Rabbit mAb | WB, IP | H, Mk |
| #9480 RagC (D8H5) Rabbit mAb | WB, IP, IF-IC, F | H, M, R, Mk |
| #2280 Raptor (24C12) Rabbit mAb | WB, IP | H, M, R, Mk |
| #2083 Phospho-Raptor (Ser792) Antibody | WB | H, M, R |
| #13879 Rheb (E1G1R) Rabbit mAb | WB, IP | H, M, R, Mk |
| #2114 Rictor (53A2) Rabbit mAb | WB | H, M, R, Mk |
| #3806 Phospho-Rictor (Thr1135) (D30A3) Rabbit mAb | WB | H, M, Mk |
| #11989 Phospho-p90RSK (Ser380) (D3H11) Rabbit mAb | WB, IHC-P, IF-IC | H, M, R, Mk, Mi, (C, X, Z, B, Dg, Pg, Hr) |
| #8753 Phospho-p90RSK (Thr359) (D1E9) Rabbit mAb | WB, IP, IHC-P, IF-IC | H, Mk, (C, X, Dg, Hr) |
| #9355 RSK1/RSK2/RSK3 (32D7) Rabbit mAb | WB, IP, IF-IC | H, M, R, Mk, GP |
| #12103 SGK1 (D27C11) Rabbit mAb | WB, IP | H |
| #5599 Phospho-SGK1 (Ser78) (D36D11) Rabbit mAb | WB, IP | H, (M, R, Mk) |
| #12860 Sin1 (D7G1A) Rabbit mAb | WB, IP | H, R, Mk |
| #14716 Phospho-Sin1 (Thr86) (D4U9L) Rabbit mAb | WB, IP | H, M, (R) |
| #4308 Tuberin/TSC2 (D93F12) XP® Rabbit mAb | WB, IP, IF-IC, F | H, M, R, Hm, Mk |
| #5584 Phospho-Tuberin/TSC2 (Ser1387) Antibody | WB, IP | H, M, R, Mk |
| #3617 Phospho-Tuberin/TSC2 (Thr1462) (5B12) Rabbit mAb | WB, IP | H, M, R |
| #8054 ULK1 (D8H5) Rabbit mAb | WB, IP | H, M, R, Mk |
| #14202 Phospho-ULK1 (Ser757) (D706U) Rabbit mAb | WB, IP | H, M, R |
| #2530 Wnt5a/β (C27E8) Rabbit mAb | WB | H |



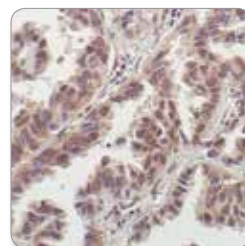
mTOR (7C10) Rabbit mAb #2983: Confocal IF analysis of MEF cells using #2983 (green). Actin filaments = DY-554 phalloidin (red). Blue pseudocolor = DRAQ5® (DNA dye).



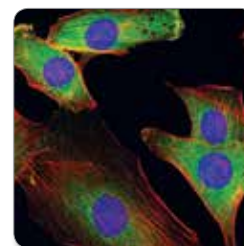
mTOR (7C10) Rabbit mAb (PE Conjugate) #15006: Flow cytometric analysis of 293T cells using #15006 (green) compared to the concentration-matched isotype control (red).



PTEN (D4.3) XP® Rabbit mAb #9188: IHC analysis of paraffin-embedded human colon using #9188.



p70 S6 Kinase (49D7) Rabbit mAb #2708: IHC analysis of paraffin-embedded human lung carcinoma, showing cytoplasmic and nuclear localization using #2708.



AMPKβ1/2 (57C12) Rabbit mAb #4150: Confocal IF analysis of untreated C2C12 cells labeled with #4150 (green). Actin filaments = Alexa Fluor® 555 phalloidin (red). Blue pseudocolor = DRAQ5® (DNA dye)

APPLICATIONS & REACTIVITY KEY: WB Western Blotting / IP Immunoprecipitation / IHC Immunohistochemistry / IF Immunofluorescence / F Flow Cytometry / ChIP Chromatin Immunoprecipitation / -IC Immunocytochemistry / -P Paraffin / -F Frozen / E-P Peptide ELISA / H human / M mouse / R rat / Hm hamster / Mk monkey / C chicken / Mi mink / Dm D. melanogaster / X Xenopus / Z zebra fish / B bovine / Dg dog / Pg pig / Sc S. cerevisiae / All all species expected / () 100% sequence homology

© 2017 Cell Signaling Technology, Inc. All rights reserved. Cell Signaling Technology, CST, and XP are trademarks of Cell Signaling Technology, Inc. U.S. Patent No. 5,675,063. All other trademarks are the property of their respective owners.

For pathway key and background please visit:
www.cellsignal.com/mTOR

Cell Signaling
TECHNOLOGY®