

2022

Log Homes

2022





Breathe in.



Dear reader,

This catalogue is for everyone dreaming of a new home. We hope you will find what you are looking for on these pages.

We at Honka are eager to help you choose your dream home. A Honka home is the beginning of a new life in many ways.

Follow log house builders on social media:

#honkafamily #honkarakenne



Discover

THE WOOD *LIFE*

Wood living from Finland

The essence of Finnish happiness comes from having a close relationship with nature and its unique light. We at Honka want to bring the life force of the northern woods and sunshine into people's lives. This is why we create healthy homes and buildings from renewable wood.

DID YOU KNOW THIS ABOUT THE POWER OF NORTHERN WOOD?



It takes less than a minute for the amount of raw tree material required for one log detached house to grow on a summer day. (*



We use renewable wood from Finnish sawmills as raw material for our logs. Our raw material is PEFC-certified, and we aim to increase the percentage of FSC-certified wood whenever more of it becomes available.



The antibacterial natural compounds of conifers eliminate bacteria and mould spores from the air and structures. This means that indoor air is healthy and that the structures are durable and free from moisture.

*Based on the Natural Resources Institute Finland's estimate on the annual growth of conifers



MATERIAL

that stands the test

OF TIME

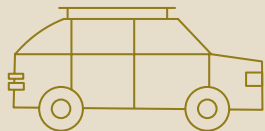


We are building the future

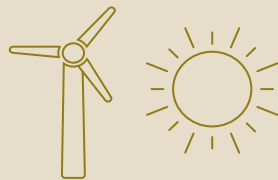
A Honka log home is a lasting legacy for future generations. Construction is the most environmentally conscious use of wood because as trees grow, they absorb carbon dioxide, which remains stored for the entire lifecycle of the building. Building a Honka log house is an act for a better, more responsible future.

DID YOU KNOW THIS ABOUT OUR SUSTAINABLE PRODUCTION?

14,220 x



Trees bind carbon dioxide into themselves from the atmosphere. The buildings we delivered in 2021 have sequestered 30,560,000 kg (* of carbon dioxide. This is equivalent to an average of 14,220 passenger cars' annual CO2 emissions. (** (***)



2022

We will switch to use renewable electricity in all of the company's own premises during 2022.



Making a log house results in considerably fewer leftover pieces than the manufacture of a CLT house, for example. The small amount of wasted wood material is used for heat energy production and recycled products.

* Standards EN 15804:201 + A1 and EN 15804:201 + A2:2019

** Traficom: average CO2 emissions of an average passenger car in Finland: 153.5 g/km

*** Statistics Finland: average annual mileage of passenger cars in Finland: 14,000 km

Just

RIGHT FOR YOU



For the unique needs in life

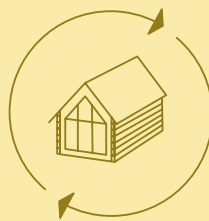
It is important for us to design buildings that improve your quality of life and stand the test of time. Our R&D team has developed and studied different solutions for decades.

We use safe methods based on our own research and we have been building log homes for over 60 years. Our work honours the Finnish traditions and competence in design, architecture and engineering.

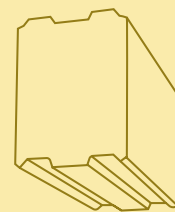
DID YOU KNOW THIS ABOUT HONKA LOG HOUSES?

M1

Our lamellar log wall falls in the construction material category M1, low-emission products. The high-quality adhesives we use meet the most stringent emission requirements.



We will train our designers to take a more life cycle focused approach to design, and we will pay closer attention to functional spatial planning and accessibility requirements.



Honka's innovation, the non-settling log, after 20 years and with the experience of thousands of homes, is the most tested and genuinely non-settling log.

#honkafamily

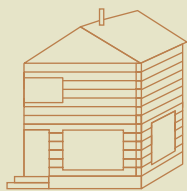
STRONG ROOTS



Honka is a family

The Saarelainen brothers founded Honka in 1958 and our company became the first industrial log house manufacturer in the world. We are still a Finnish family business. We are a group of dedicated professionals in wood construction and our company is a global pioneer in this field. The Honka family is a community for everyone who appreciates sustainable, healthy wood building – and we want to invite our customers to become part of it, too: #honkafamily

DID YOU KNOW THIS ABOUT OUR COMPANY HONKARAKENNE PLC?



85,000

We have sold more log houses than any other company in the world – more than 85,000 in 50 countries.



We are the only log house manufacturer with a certified quality system: ISO 9001 quality and ISO 14001 environmental standard. It means that all house manufacture processes are monitored and developed systematically.



Our values – passionate, caring and bold – encapsulate the Honka spirit.



CONTENTS

Contemporary *houses* 15

Haiku	16
Sumu	18
Havu	20
Vuolu	22
Ailo	24
Riekkö	26
Huomen	34
Apollo	36
Mambo	38
Tuuma	40

Classic *houses* 45

Suvi	46
Touko	48
Pilvi	52
Vilja	54
Louna	56
Kunnas	66
Pouta	68
Lumikello	72
Serenata	74
Soihtu	76

Holiday *houses* 79

Lux	80
Ahto	82
Lastu	84
Halla	86
Halti	88
Tuuli	90
Vista	92
Metso	102
Sirius	104
Lintukoto	106

Custom *log homes* 109

Serene countryside	110
Log dream	116
Honka Fusion	122

Info and *services* 128

It's more than a house. It's a healthy home.	128
Honka Fusion™ and the freedom of design	130
Safe dreams with certified structures	132
Honka Building Service	134
Honka logs — the heart of your home	136
Contact our local sales representative	138





Contemporary *houses*

Honka's modern log detached houses combine a classic building material and Scandinavian elegance. The beautiful, modern look is created with Honka's own innovations: genuinely non-settling logs and zero-corner solution. The large windows typical of modern log homes bring light and a feeling of space into the interior, while the natural wood surface radiates warmth and peacefulness.

Explore our whole contemporary collection: [honka.com](https://www.honka.com)



Honka *Haiku*

Honka Haiku is a modern, Scandinavian atrium house with a Japanese touch. As is typical of atrium houses, the spa, conservatory and living room have glazed sliding doors facing the sheltered courtyard. The large windows and the patio surrounding the building make the exterior part of the interior, which is why Haiku is at its best on a sheltered plot close to nature. The model features three bedrooms and a combined kitchen, dining and lounge area for cosy family time.

HAIKU 192 1A

-	
Gross area	192.0 m ²
Net area	145.5 m ²
Terrace area	119.0 m ²
ID	50077

Find more floor plan options at [honka.com](https://www.honka.com)

“Honka Haiku is designed by the talented young architect Marko Simsiö.”

ANNE, CHIEF ARCHITECT, HONKA



Floor plan scale 1:100



The designs are available in a range of sizes and layouts that can be adjusted according to your individual needs. The window solutions and details may vary by country. Contact your local Honka representative for more information.



Honka *Sumu*

Honka Sumu is a delightful ‘nest’ that charms with its natural light and strong connection with its surroundings. The large landscape windows allow light to enter freely, with a view in both directions from the lounge. More private rooms are in the wings. A covered, sheltered terrace increases living comfort and expands life outdoors during the warm months. The spacious bedrooms with landscape windows create a good setting for working remotely. The efficient single-level floor plan is well suited for both families with children and couples. The model is also well suited for year-round leisure activities.

SUMU 134 1A

–	
Gross area	134.0 m ²
Net area	121.5 m ²
Terrace area	54.0 m ²
ID	50075

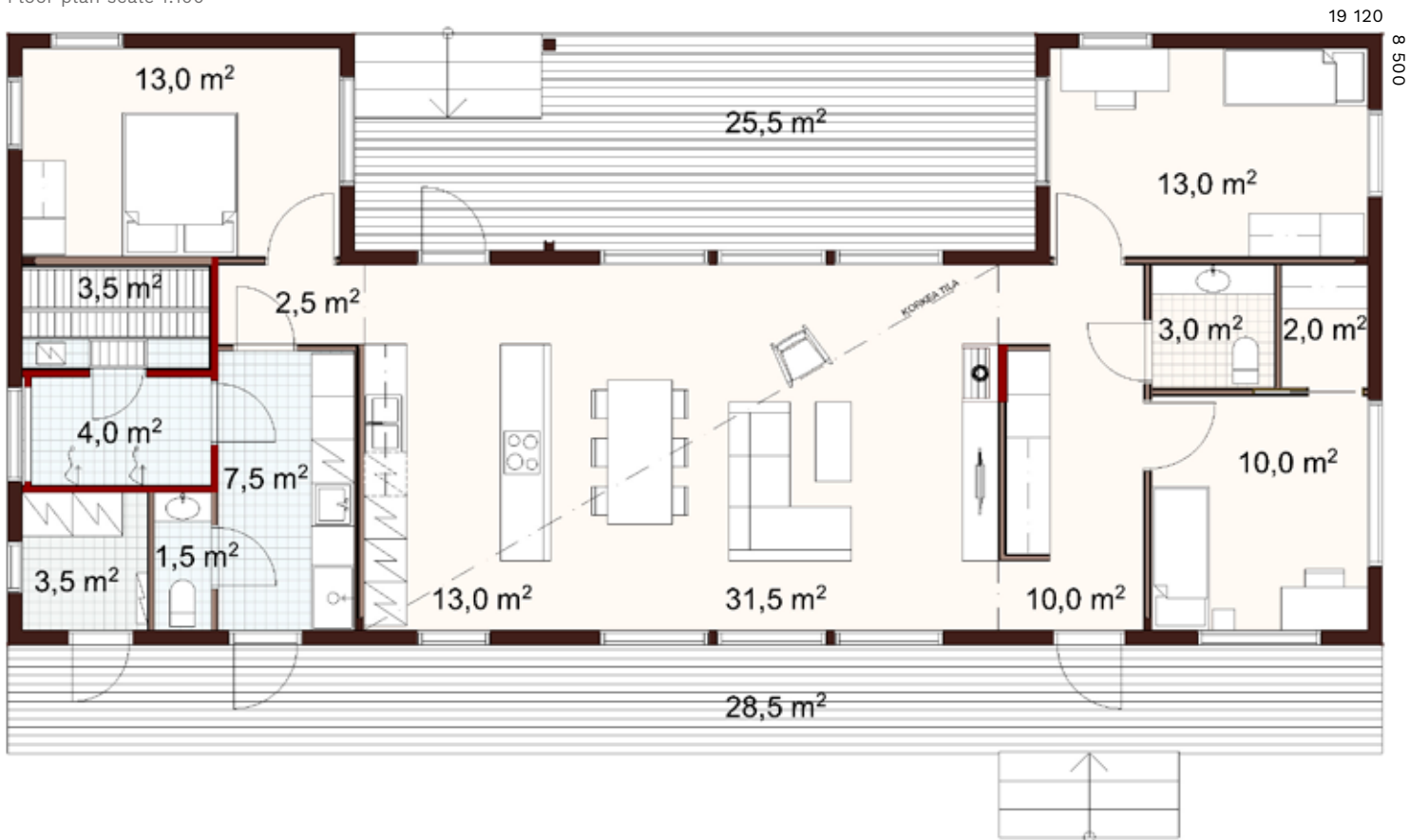
Find more floor plan options at [honka.com](https://www.honka.com)

“The impressive landscape windows in two directions and the spacious 25 m² patio create a strong feeling of living somewhere between nature and the indoor environment.”

SANNA, MARKETING DIRECTOR, HONKA



Floor plan scale 1:100



The designs are available in a range of sizes and layouts that can be adjusted according to your individual needs.



Honka *Havu*

Honka Havu is an impressive city house for a young family with modern needs. Its new, efficient floor plan includes an island around which you can access all the rooms. The large windows of the high-ceiling living room open towards the landscape and provide light also to the upper floor. The lobby is also high, with plenty of natural light. The large bedroom and living area upstairs increase living comfort for the family's adults. A remote workstation can easily be fitted in the bedroom and living area.



HAVU 168 1A

-	
Gross area	168.0 m ²
Net area	155.5 m ²
Terrace area	26.5 m ²
ID	50082

Find more floor plan options at [honka.com](https://www.honka.com)

“Havu has an interesting floor plan, as you can access the space via various routes. At the same time, however, each space offers peace and privacy.”

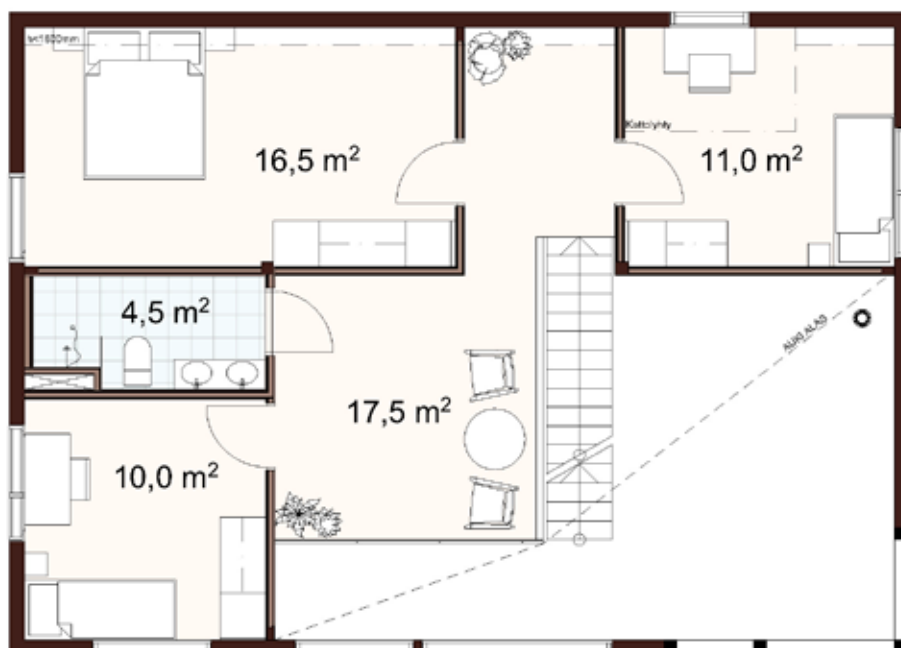
ANNE, CHIEF ARCHITECT, HONKA

Floor plan scale 1:100

11 900



CONTEMPORARY



The designs are available in a range of sizes and layouts that can be adjusted according to your individual needs. The window solutions and details may vary by country. Contact your local Honka representative for more information.



Honka *Vuolu*

Honka Vuolu is an elegant and modern urban home with a combined dining area and kitchen at its heart. The lobby-like upstairs lounge area of this four-bedroom home overlooks a high-ceiling living room with large windows for plenty of natural light. Both sides of the building feature a covered patio, and a full-width balcony completes the impressive whole.

VUOLU 163 1A

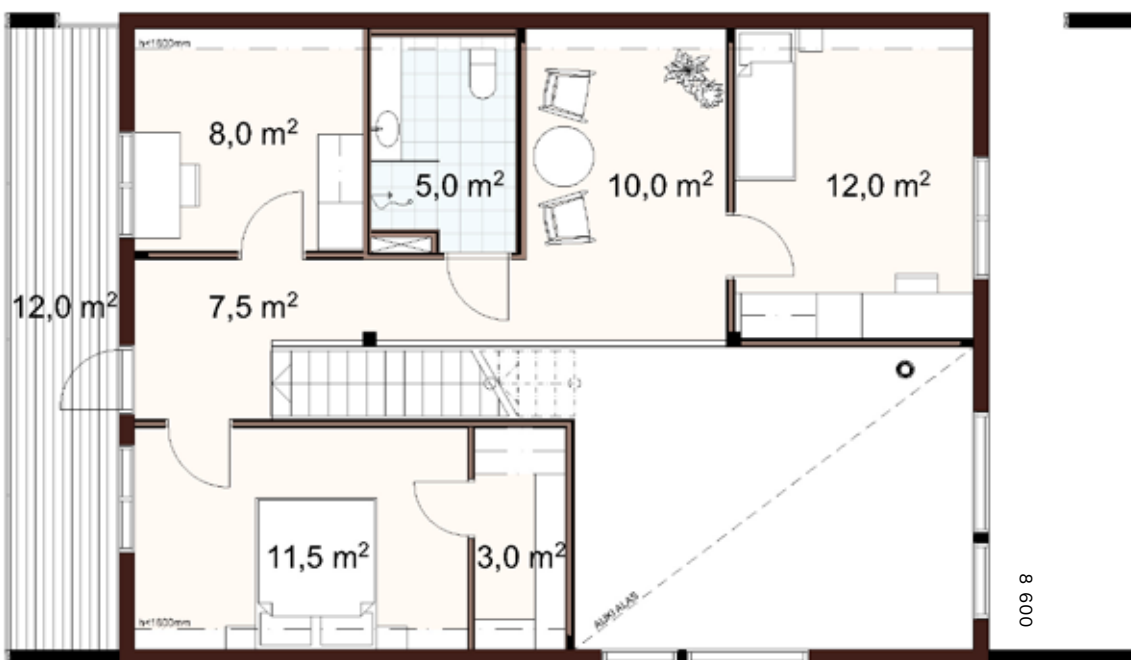
–	
Gross area	162.5 m ²
Net area	151.5 m ²
Terrace area	52.5 m ²
ID	50091

“Honka Vuolu has a strong sense of space and a diverse interior.”

ANNE, CHIEF ARCHITECT, HONKA



CONTEMPORARY



14 990

The designs are available in a range of sizes and layouts that can be adjusted according to your individual needs. The window solutions and details may vary by country. Contact your local Honka representative for more information.



Honka *Ailo*

The inspiration for Honka Ailo has been taken from the unique landscape of Finnish Lapland. It's magnificent glass wall makes the interior feel at one with nature and the high living room is bathed in natural light. The bedrooms are located in the privacy of the back of the house and on the loft. The sauna and the bathroom are in their own wing where you can enjoy your ambient, leisurely sauna moments. In this home you can enjoy life and the surrounding nature!



AILO 150 1A

–

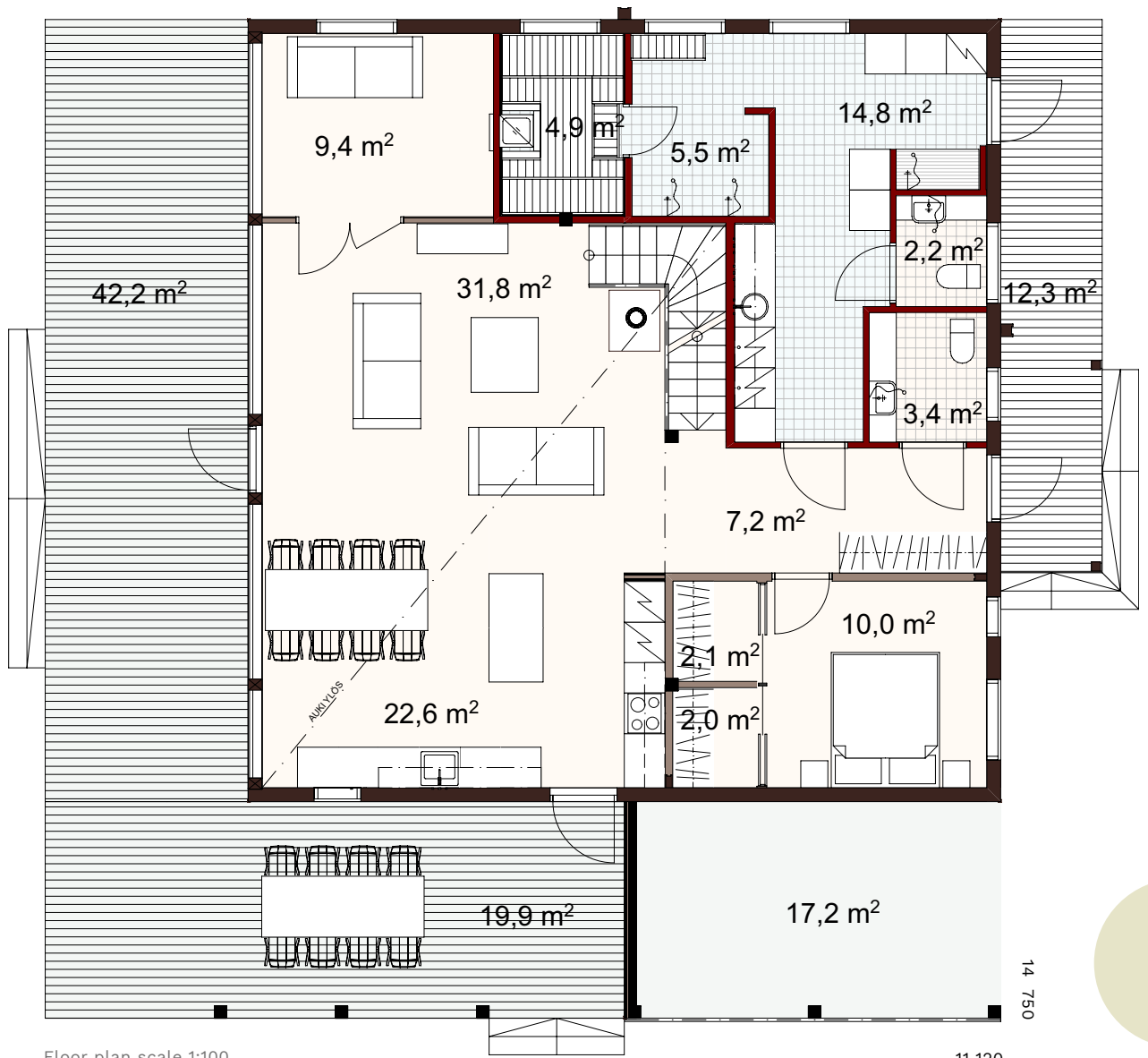
Gross area 150.0 m²

Net area 140.0 m²

Terrace area 74.5 m²

ID 36417

Find more floor plan options at [honka.com](https://www.honka.com)



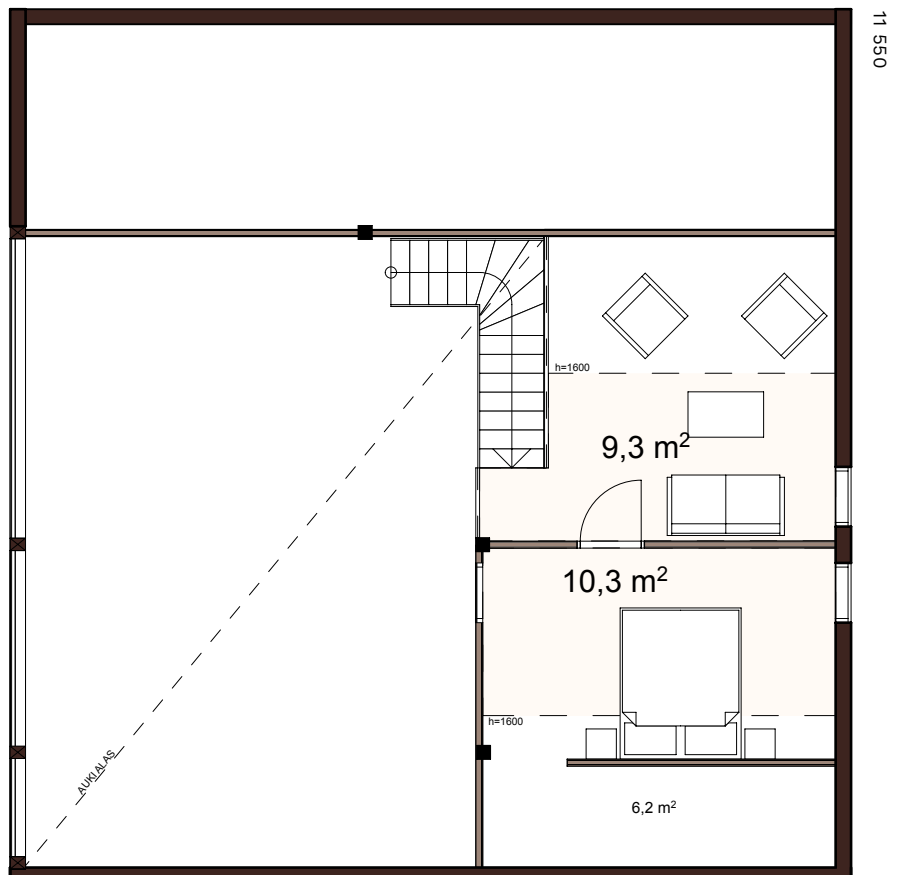
Floor plan scale 1:100

11 120

“Ailo is inspired by the Lappish fell landscape and named after an expressive reindeer.”

SANNA, MARKETING DIRECTOR,
HONKA

The designs are available in a range of sizes and layouts that can be adjusted according to your individual needs. The window solutions and details may vary by country. Contact your local Honka representative for more information.





Honka *Riekkö*

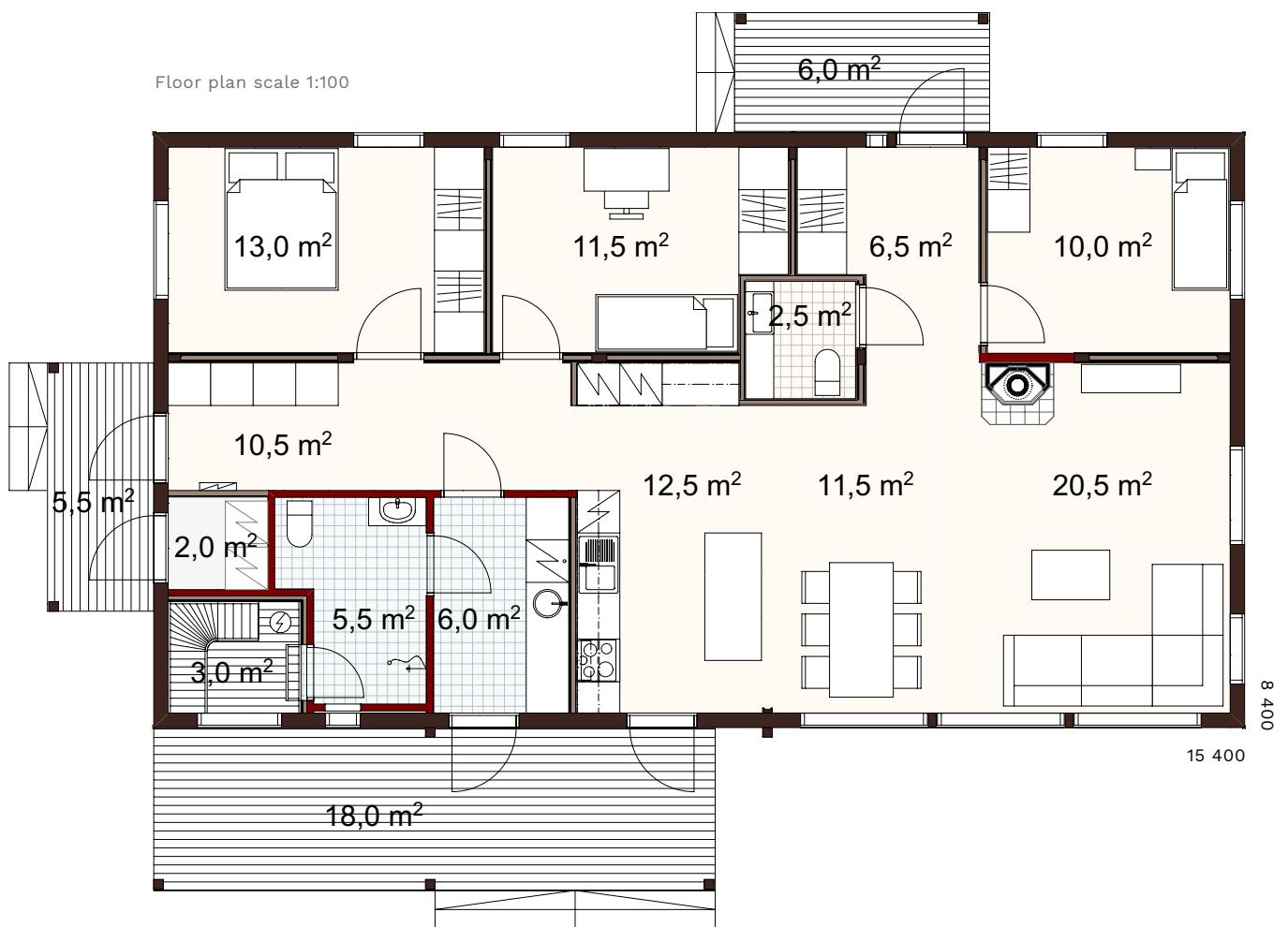
Honka Riekkö is an easy choice if you are dreaming of a log home: it is a clean-lined, modern and compact log home that blends in beautifully with its surroundings. The model's cost-effective floor plan can meet a host of daily needs and the spacious hallway is very practical for families with children and pets.

RIEKKÖ 130 1A

–	
Gross area	129.5 m ²
Net area	120.0 m ²
Terrace area	29.5 m ²
ID	50069

Find more floor plan options at [honka.com](https://www.honka.com)

This shed-roof log home is suited for a landscape plot and as a year-round holiday home.



The designs are available in a range of sizes and layouts that can be adjusted according to your individual needs.



A *STORY* OF



A FAMILY

Just over a year after settling into their house, Tuomas and Kaisa are still very happy with the result.



CONTEMPORARY

Smooth *life*

For Kaisa and Tuomas
a log house seemed the
only right option





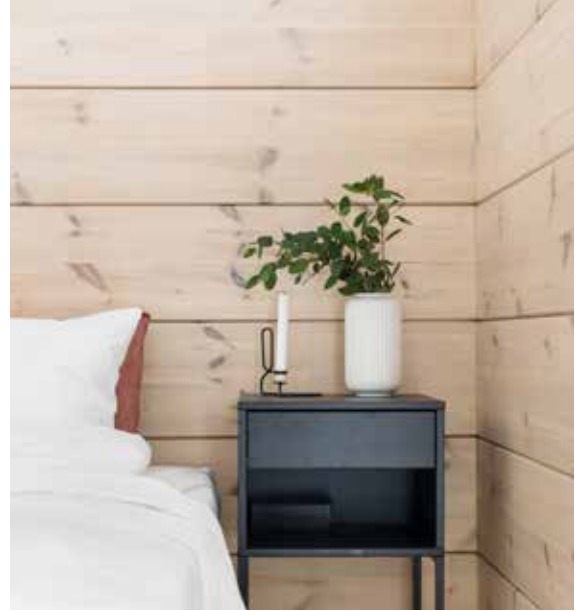
“Logs have a sturdy look and wood is a pleasant material.”

CONTEMPORARY

BUILDING A PLACE for themselves was not the first idea that came to mind when Kaisa and Tuomas considered moving to a larger place. “We have lots of hobbies and could no longer fit all our equipment such as our bikes in the storeroom,” Kaisa says. Suddenly the couple found themselves in the queue for a plot, literally queueing overnight.

Kaisa and Tuomas designed the floorplan of the house themselves and Honkarakenne’s designers redrafted it. “The clincher was Honkarakenne’s status as a stable and reliable, major player in the log construction industry,” Tuomas says. The starting point for the design was smooth everyday life, taking account of the couple’s hobbies. For example, the lobby includes a walk-in closet for sports equipment.

The couple regards design work as the key factor in the success of the project. Dozens of versions were made of the floor plan and it took several hours to fine-tune. However, it was worth all the time spent, as a workable foundation is of huge importance to everyday life.



CONTEMPORARY



Kaisa loves to observe the seasonal changes in the landscape from the sofa.



Honka Riekko

Log Honkarakenne non-settling lamellar log FXL 204 mm with zero corner

Floor area 130 m² + garage 39 m²

Living area: 119 m² + garage 32 m²

Rooms Hallway, utility room, bathroom, sauna, toilet, 3 bedrooms, living room/kitchen, lobby + walk-in closet

Interior surface materials Gypsum board walls and ceilings: Teknos paints, shade F497 (paper). Log surfaces treated with Tremax wood bleach and Coloria oil wax. Floor: Tarkett ash parquet. Tiles: Betontech white

Exterior wall colour Paints by Virtanen, four-oil paint, black

Roof JL Jalo lock seam, RR33 black

Kitchen furniture Arkkikaluste

Heating type Air-to-water heat pump with circulating underfloor heating, heat-storing fireplace, cooling with air source heat pump

Year of construction 2018–2019

CONTEMPORARY



Tuomas and Kaisa love the high-ceiling living room / kitchen area best, with its log walls and forest view through large windows.

The construction work was a pleasant surprise, despite the couple's lack of experience of building.





Honka *Huomen*

A modern home designed for the good life, made for unhurried, calm relaxation at one with nature. The Honka Huomen home was designed with the theme of holistic well-being in mind — leaving your busy life at the front door, because this house has a place for everything and everyone.

HUOMEN 158 1A

—	
Gross area	157.5 m ²
Net area	145.5 m ²
Terrace area	69.5 m ²
ID	50065

Find more floor plan options at [honka.com](https://www.honka.com)

The impressive Honka Frame landscape window invites the whole family to spend time together in the living room.



14 100

Floor plan scale 1:100



The designs are available in a range of sizes and layouts that can be adjusted according to your individual needs. The window solutions and details may vary by country. Contact your local Honka representative for more information.



Honka *Apollo*

The large window surfaces, partially shielded by wooden lattice-work give structure to the Apollo facade, interspersed with sections of massive wood and render. Adjusting the layout is easy: the kitchen, dining and Net areas are located in the centre of the house, opening up in two directions across the interior, and you can adapt the floor area allocation to suit your own personal requirements. One end of the house is dedicated to bedrooms, while the other houses the sauna and utility room.



APOLLO 200 1A

–

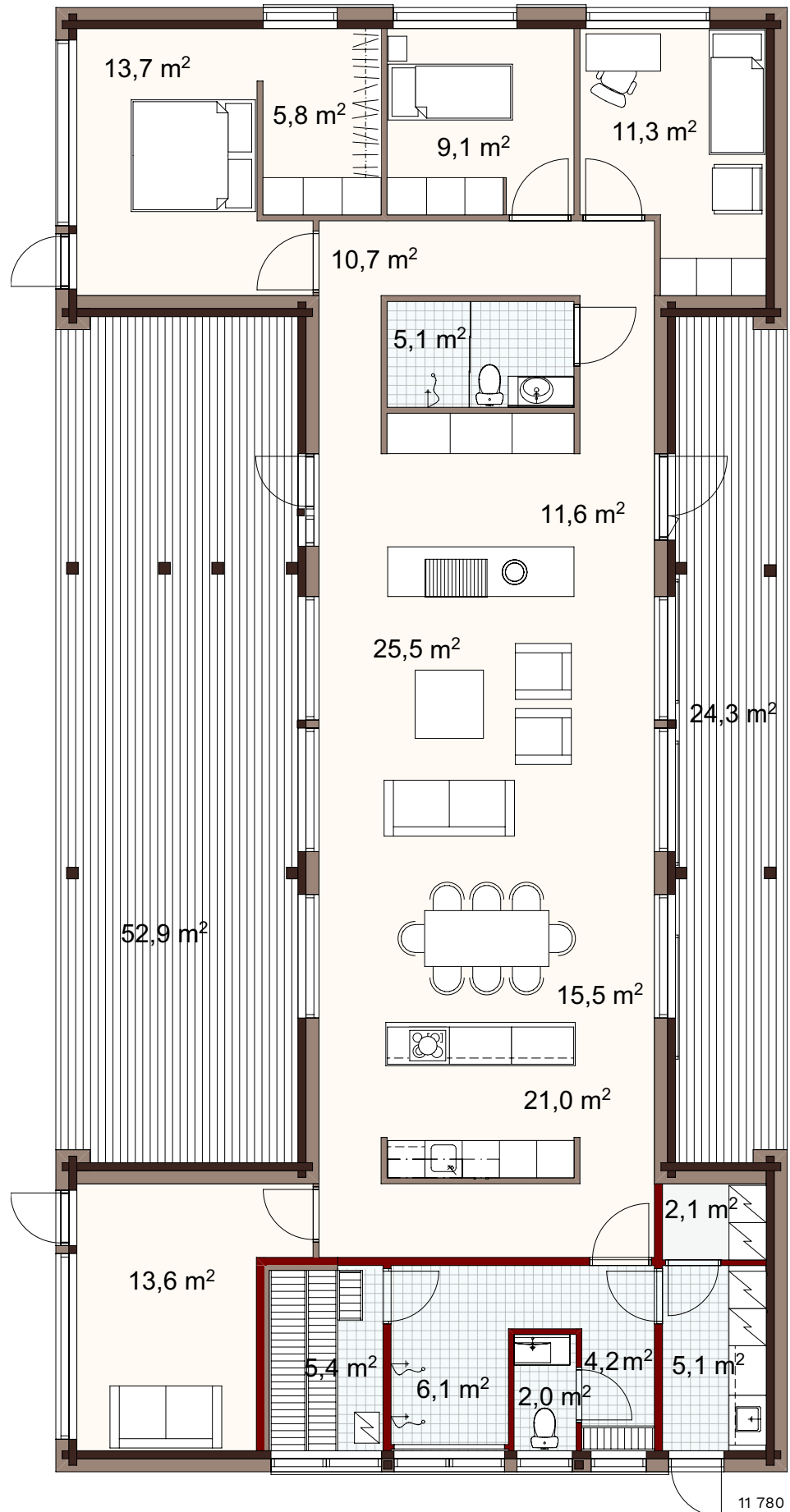
Gross area 193.0 m²

Net area 172.5 m²

Terrace area 77.0 m²

ID 14929

Floor plan scale 1:100



A large skylight allows light to flood into the covered atrium.

The designs are available in a range of sizes and layouts that can be adjusted according to your individual needs.

23 590

11 780



Honka *Mambo*

Mambo is a stylish and popular detached home, with large windows and a modern mono-pitch roof to give it a distinctive appearance. The Net area provides direct access into the garden, while the large windows ensure that the space is wonderfully light. A number of layout alternatives are available.

MAMBO 140 4A

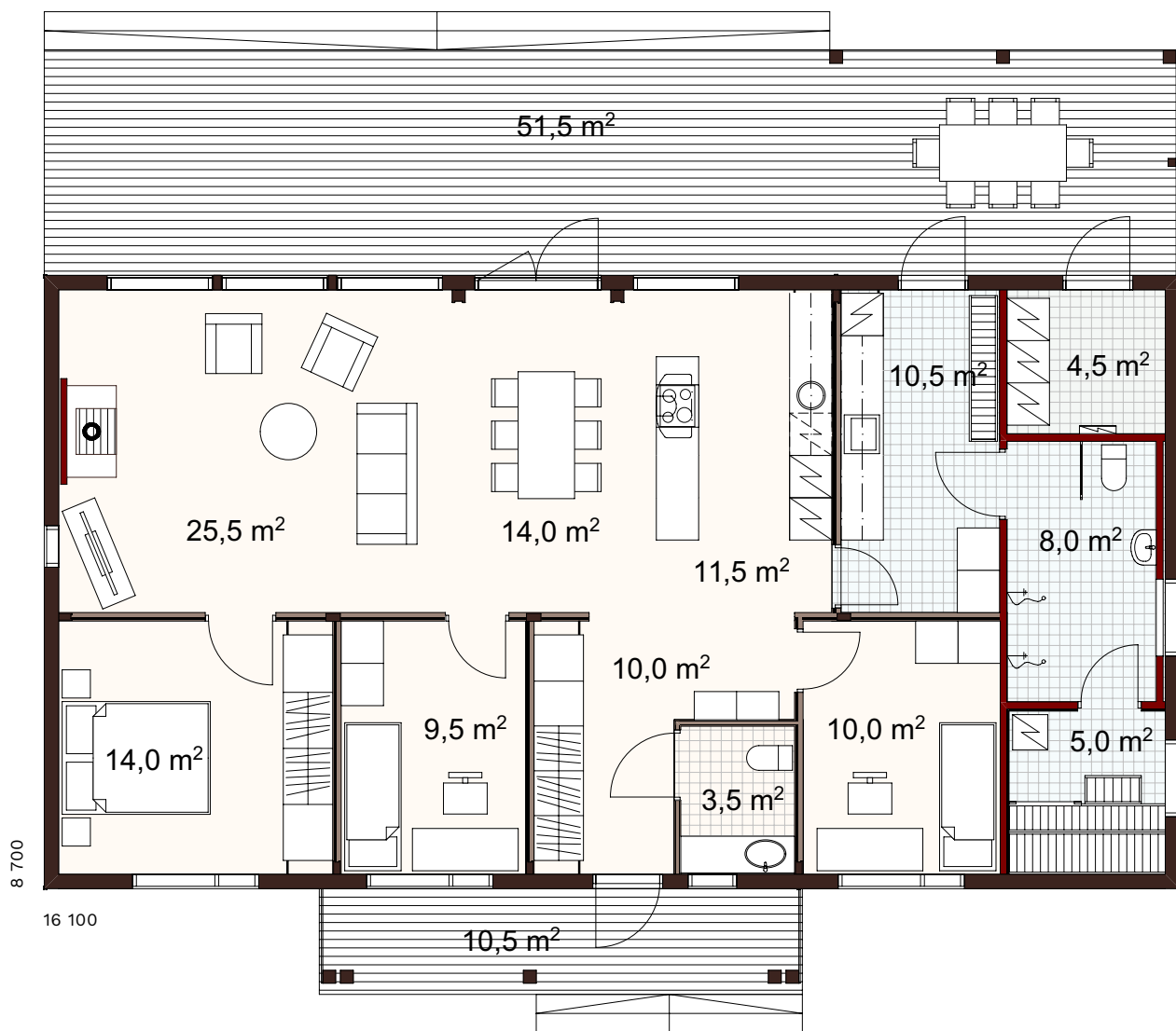
-	
Gross area	140.0 m ²
Net area	129.5 m ²
Terrace area	62.0 m ²
ID	34977

Find more floor plan options at [honka.com](https://www.honka.com)

A separate sauna building, complete with overnight facilities for guests, brings a touch of luxury to your daily life.



Floor plan scale 1:100



CONTEMPORARY

The designs are available in a range of sizes and layouts that can be adjusted according to your individual needs.



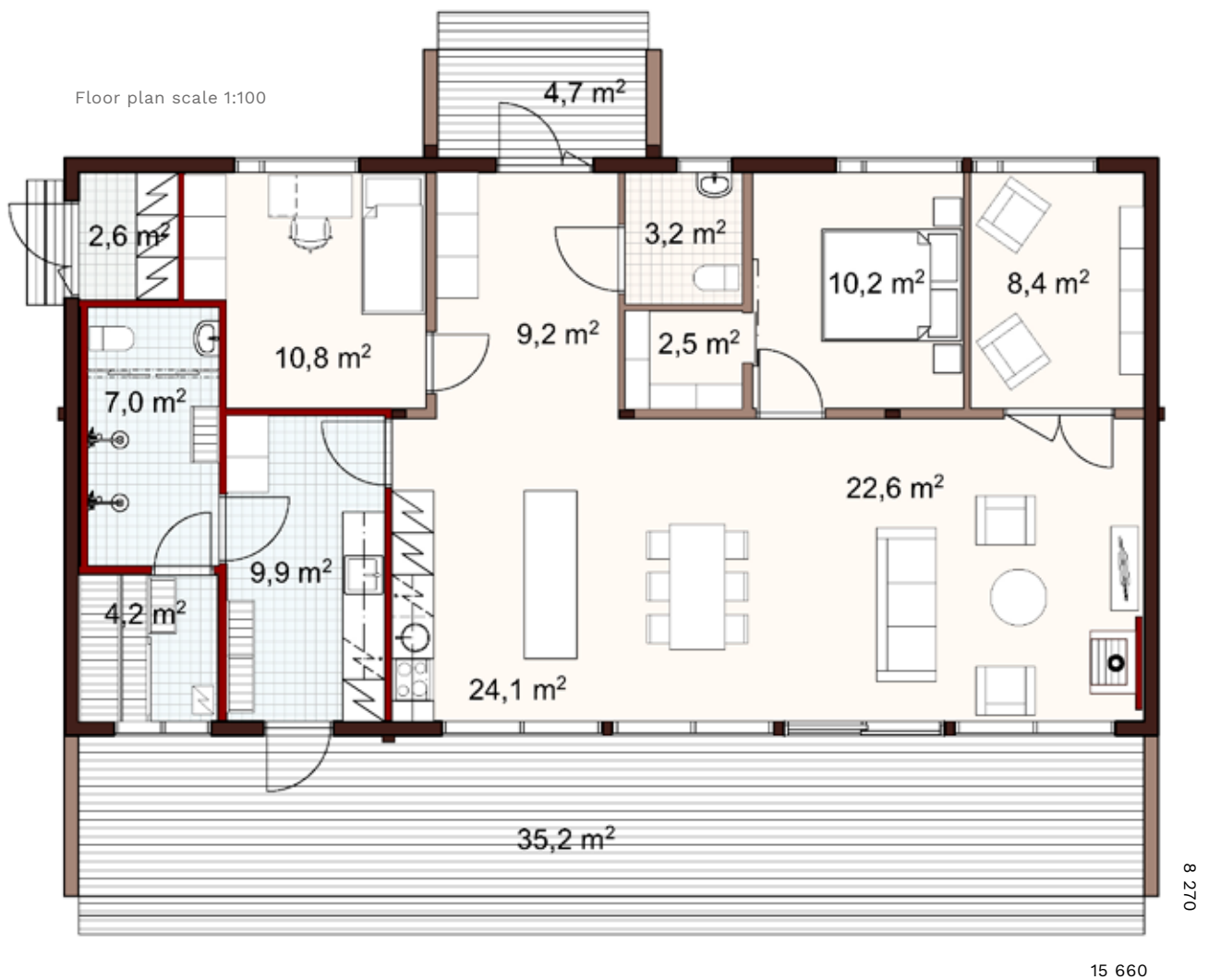
Honka *Tuuma*

The houses in the Tuuma collection play off of the pleasant contrast between living wood and modern aesthetics. Large window surfaces and sheltered terrace and balcony areas form a natural link between the outside world and the living spaces.

TUUMA 130 1A

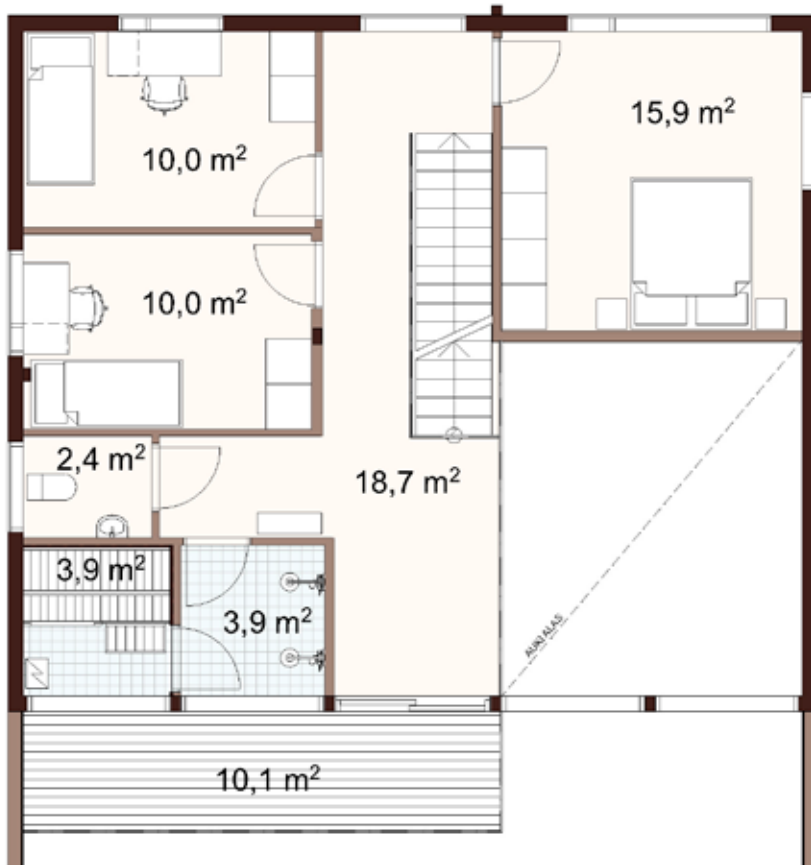
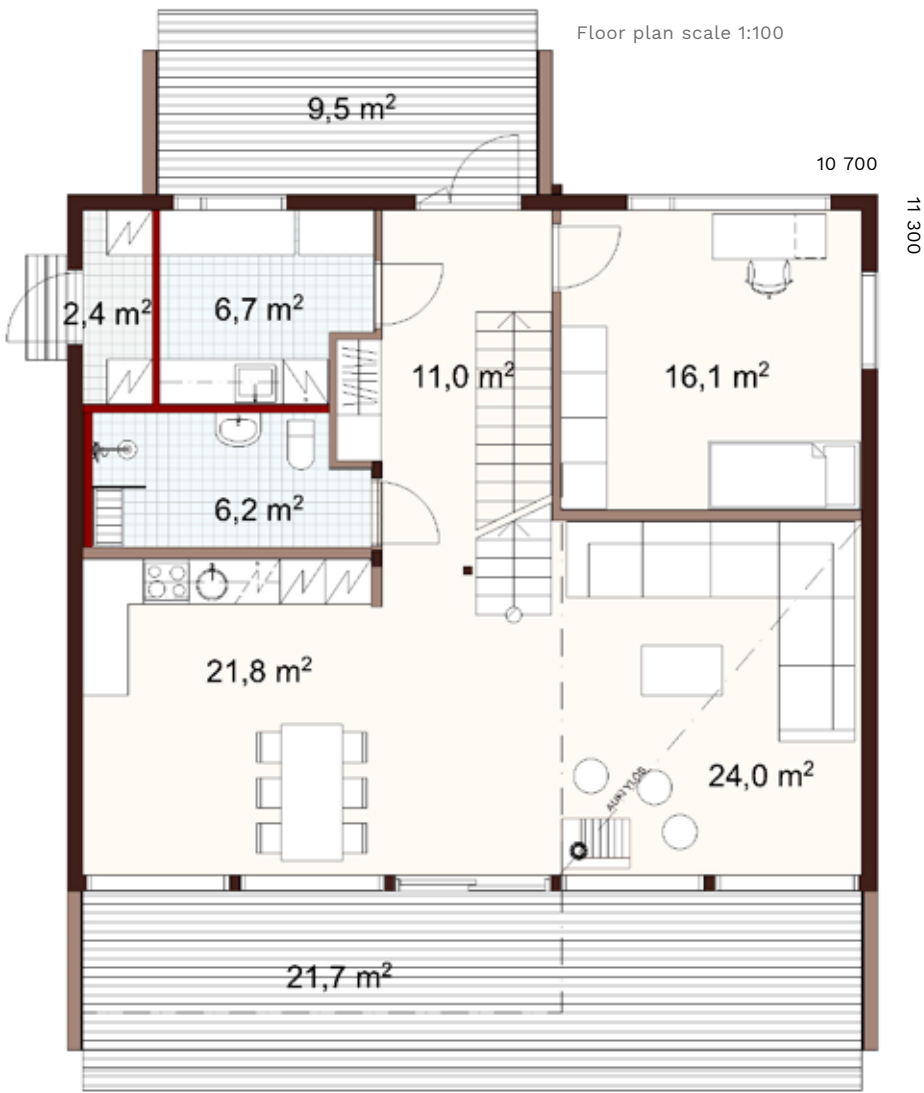
-	
Gross area	129.5 m ²
Net area	120.0 m ²
Terrace area	40.0 m ²
ID	27157

The Tuuma collection features houses of different sizes, including one and two storey models.



The designs are available in a range of sizes and layouts that can be adjusted according to your individual needs.

Floor plan scale 1:100



The collection contains options for both recreational villas and detached houses.

TUUMA 180 1A

–

Gross area 174.0 m²

Net area 158.0 m²

Terrace area 41.0 m²

ID 27145



CONTEMPORARY



The different sizes and floor plans offer quality living to families big and small.





A modern living room interior featuring light wood paneling on the walls and ceiling. A white sofa with several cushions is positioned in the foreground. Behind the sofa, there are several large potted plants, including palm trees. To the left, there is a large window with a dark frame and a triangular window above it. The overall atmosphere is warm and contemporary.

Classic houses

Want to live in a classic, beautiful log detached house? Classic log homes built with modern construction technology have a warm atmosphere and are perfectly suited into the Finnish landscape. A classic log house has symmetrical and clear proportions. They are extremely functional for daily needs, and the floor plans are optimally cost-effective. Decorative porches, glazing bar windows, columns and bay windows can be added for an expressive touch. Sympathetic glazing bar windows or boxed short corners are also classic elements of our houses.

Explore our whole classic collection: [honka.com](https://www.honka.com)



Honka *Suvi*

Honka Suvi is inspired by the New England style and Danish farmhouses. The floor plan of this log home provides a fair amount of space for excellent everyday functionality. The spacious utility room is directly accessible from the island kitchen, which also has access to a sizeable patio. The large master bedroom is at the other end of the building, offering peace and quiet for the adults in the family. The classic architecture of Honka Suvi stands the test of time.

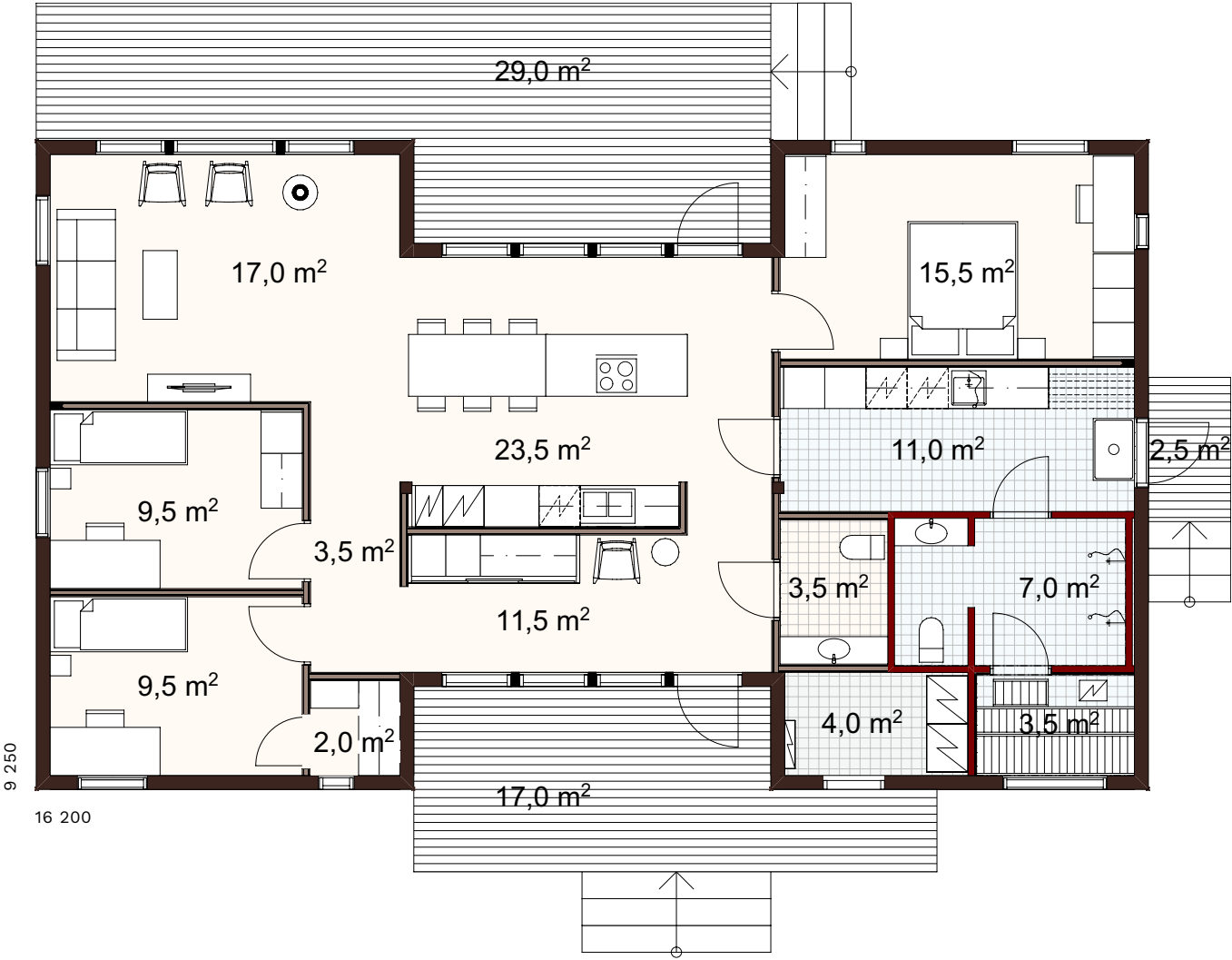
SUVI 138 1A

-	
Gross area	137.5 m ²
Net area	125.5 m ²
Terrace area	48.5 m ²
ID	50092

*The spacious, bright hallway
makes everyone feel welcome.*



Floor plan scale 1:100



The designs are available in a range of sizes and layouts that can be adjusted according to your individual needs.



Honka *Touko*

Honka Touko is an impressive-looking dream log house with an end window that highlights the landscape. Owing to its popularity, we have created a two-storey variation for those who value stunning landscapes and a feeling of large space. The classic gable roof meets modern details, and what's best, the floor plan is still functional and efficient for a family with children.

TOUKO 120 1A

-	
Gross area	120.0 m ²
Net area	110.0 m ²
Terrace area	39.0 m ²
ID	50066

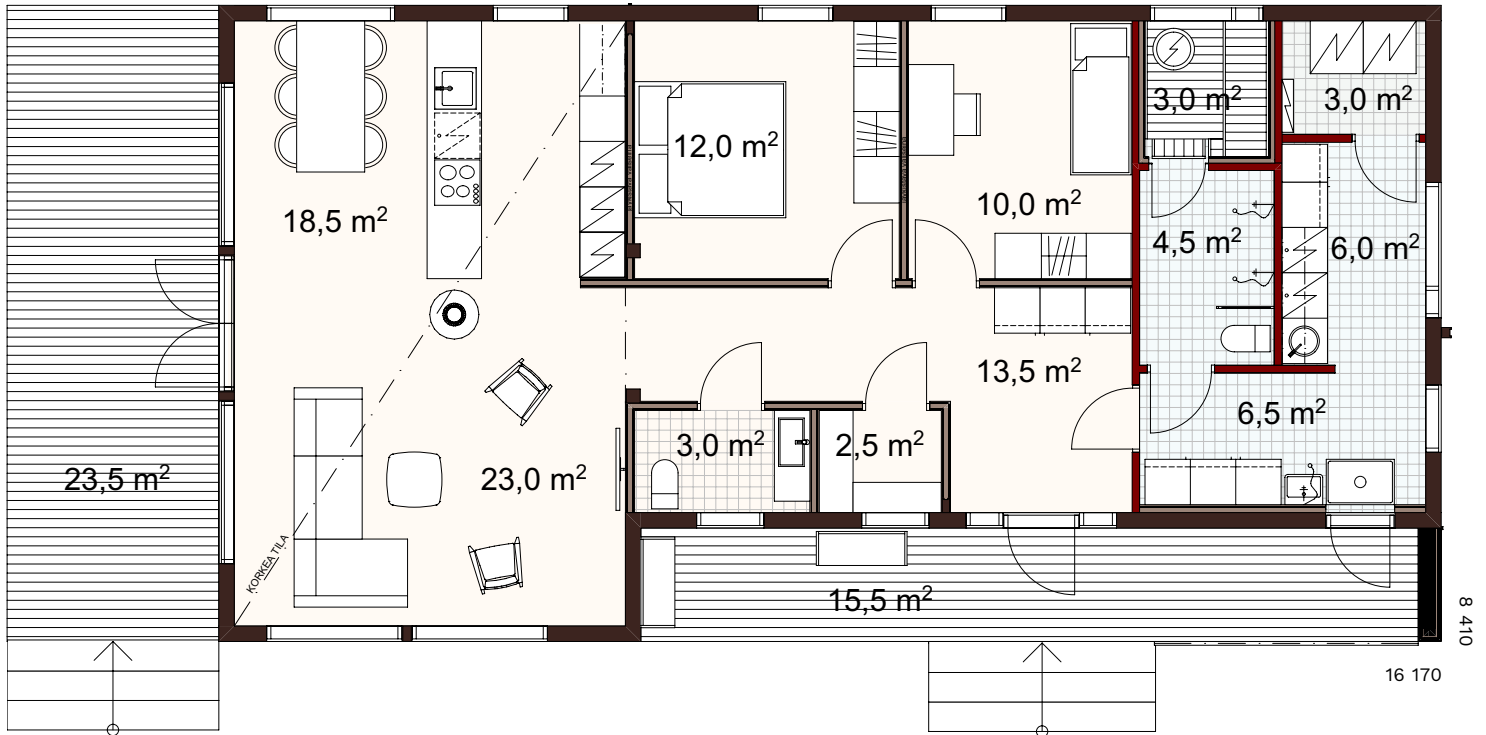
Find more floor plan options at [honka.com](https://www.honka.com)

“Many people dream of a high-ceiling living room, and this house has just that. Together with large windows, this creates a strong feeling of being close to nature.”

SANNA, MARKETING DIRECTOR, HONKA

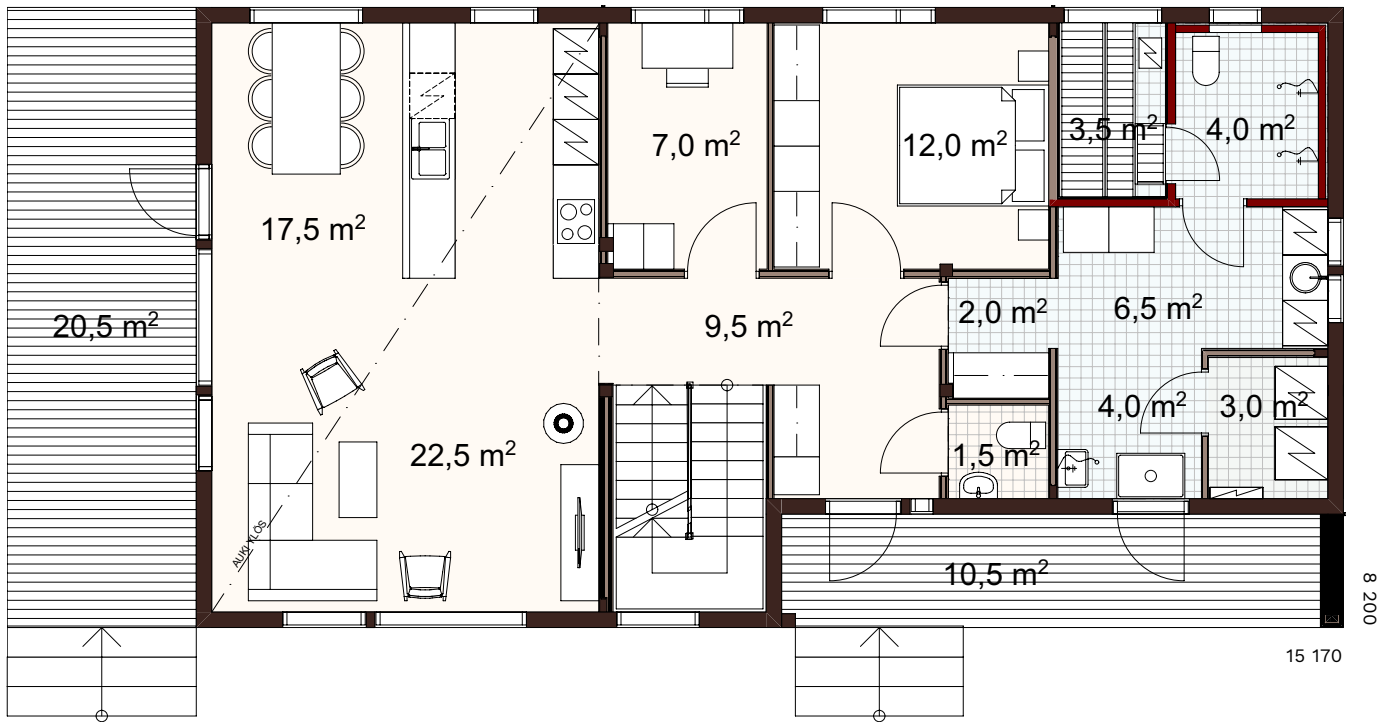


Floor plan scale 1:100

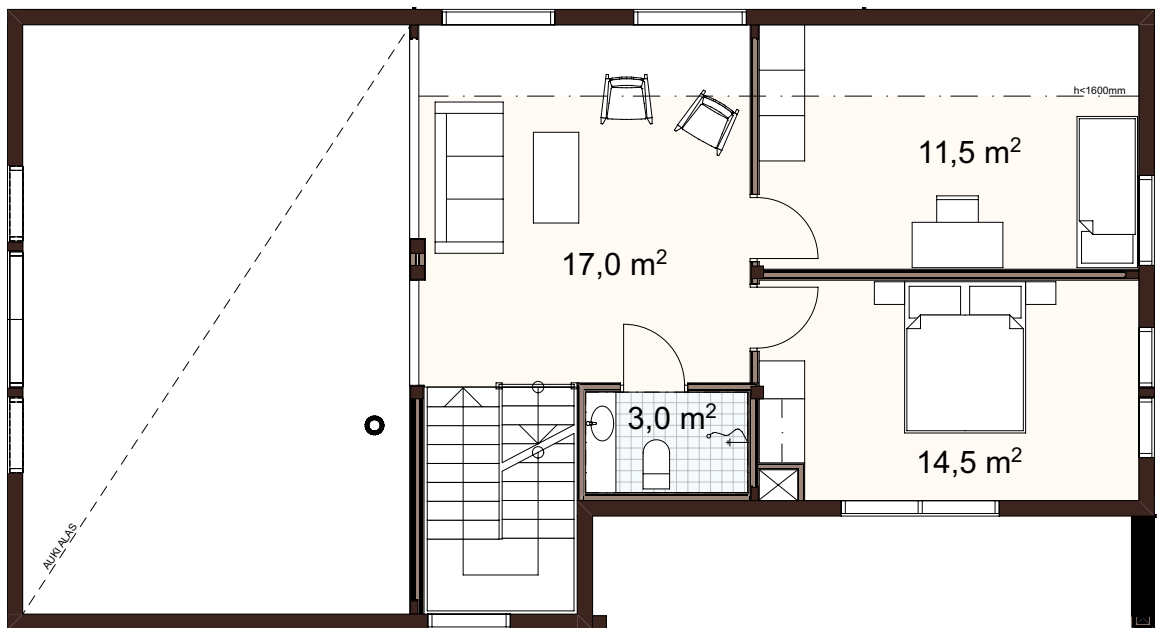


The designs are available in a range of sizes and layouts that can be adjusted according to your individual needs.

Floor plan scale 1:100



CLASSIC



The style can be easily adjusted with glazing bar windows; just pick the style you prefer.

TOUKO 164 1A

-	
Gross area	164.0 m ²
Net area	151.5 m ²
Terrace area	31.0 m ²
ID	50073



CLASSIC



Touko's high-ceiling living room almost has a sacral feel to it. The large end window provides a fantastic view and illuminates the rooms — even the upstairs areas, where you can just sit and take in the view.





Honka *Pilvi*

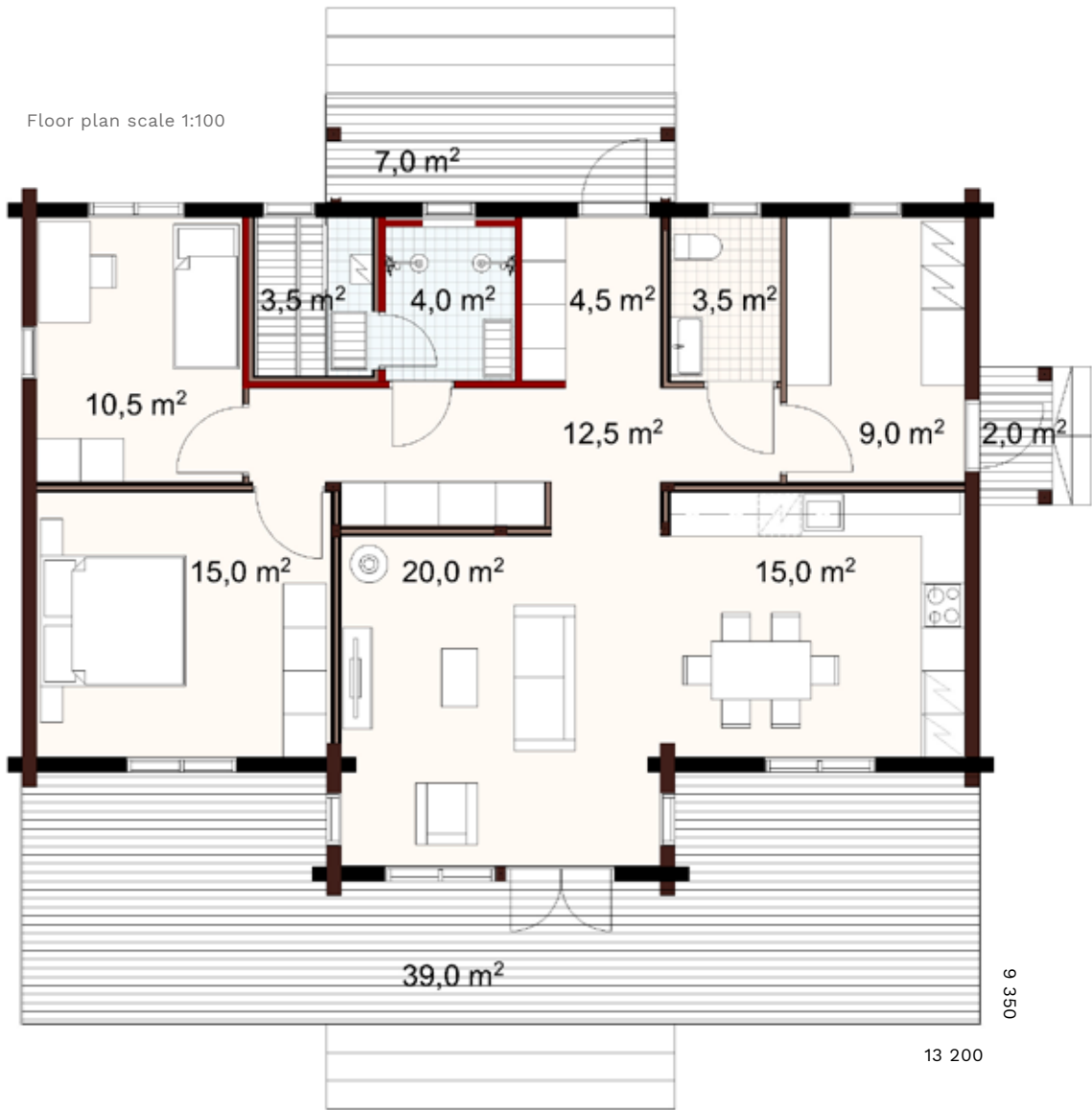
Honka Pilvi is a cosy log dream house whose iconic architecture retains its appeal decade after decade. It's easy to relax in its embrace, and its high windows allow you to take in the surrounding landscape. The single-storey house has an efficient floor plan, and includes a large utility room for entering the house in muddy boots. The one-and-a-half storey Honka Pilvi house has a second lounge and two bedrooms, and the necessary extra facilities.

PILVI 111 2A

-	
Gross area	111.0 m ²
Net area	102.0 m ²
Terrace area	48.0 m ²
ID	50013

Find more floor plan options at [honka.com](https://www.honka.com)

Pilvi's classical beauty is combined with practicality.



The designs are available in a range of sizes and layouts that can be adjusted according to your individual needs.

CLASSIC



Honka *Vilja*

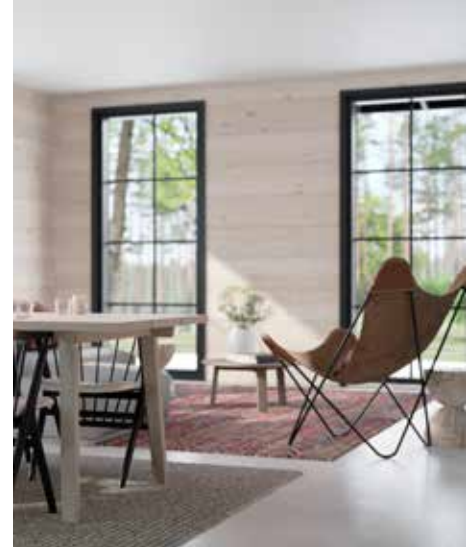
Honka Vilja was a classic from the beginning — its clear architectural style and elegant glazing bar windows are at home in the changing Nordic landscape. The efficient floor plan is ideal for creating a dream log house that will last decades.

VILJA 122 1A

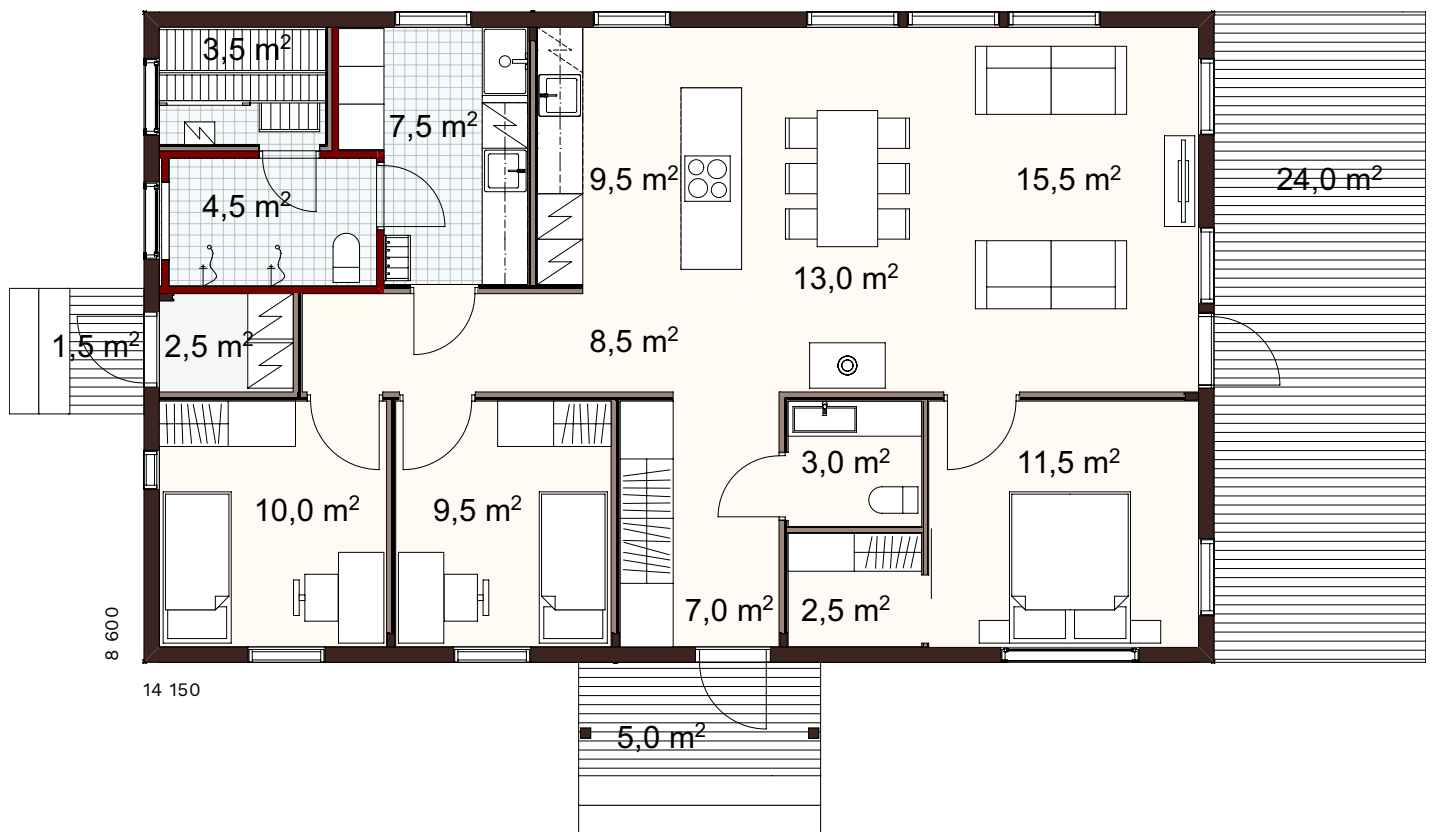
—	
Gross area	121.5 m ²
Net area	113.0 m ²
Terrace area	30.0 m ²
ID	50019

Find more floor plan options at [honka.com](https://www.honka.com)

In this house, every square metre is used optimally, and there's plenty of storage space.



Floor plan scale 1:100



The designs are available in a range of sizes and layouts that can be adjusted according to your individual needs.



Honka *Louna*

Honka Louna represents New England style architecture, adding a touch of the seaside even to the most urban settings. The shape of the house is classic, but the minimalistic architectural details and big windows make it modern. The one-storey model has floor-to-ceiling windows in the living room and the master bedroom, letting the daylight in beautifully.

LOUNA 130 TAKA 3A

-	
Gross area	131.5 m ²
Net area	121.5 m ²
Terrace area	21.0 m ²
ID	20691

The walk-in clothes cupboard and the utility room make everyday life smoother.

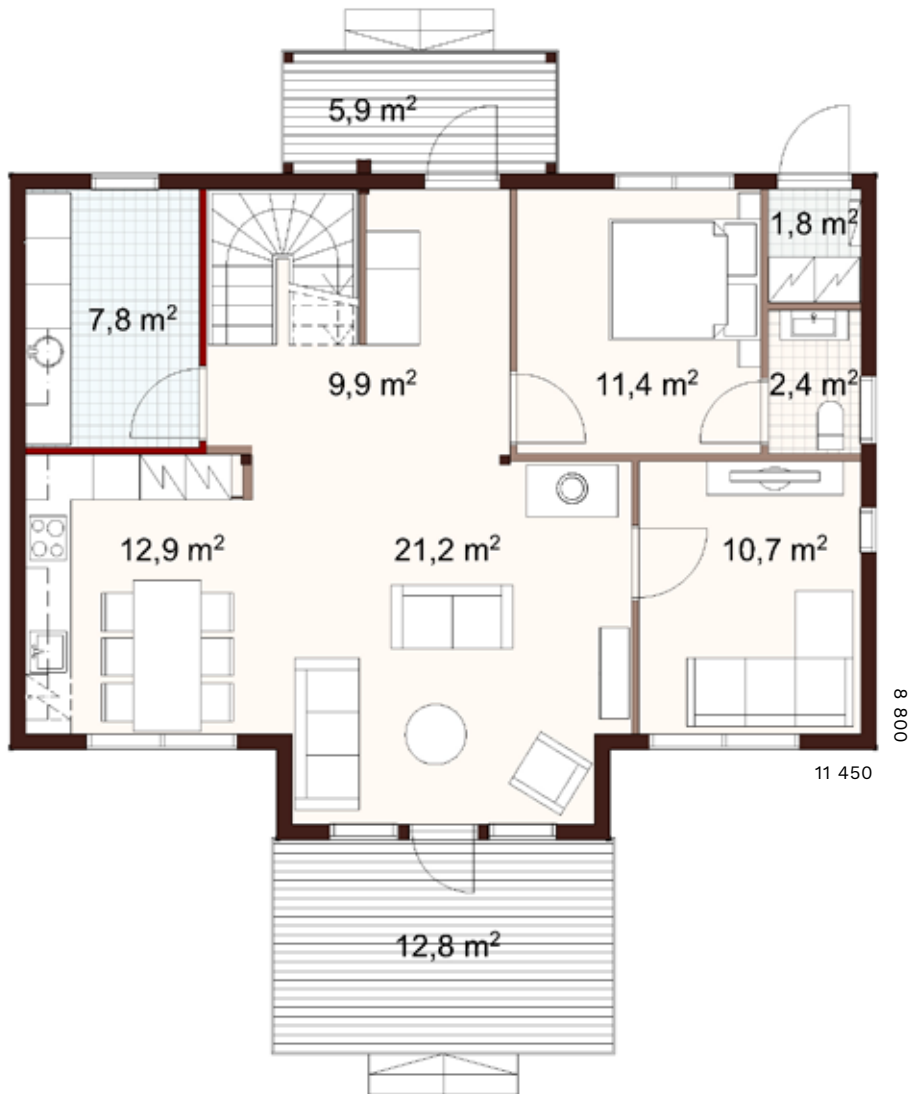


Floor plan scale 1:100

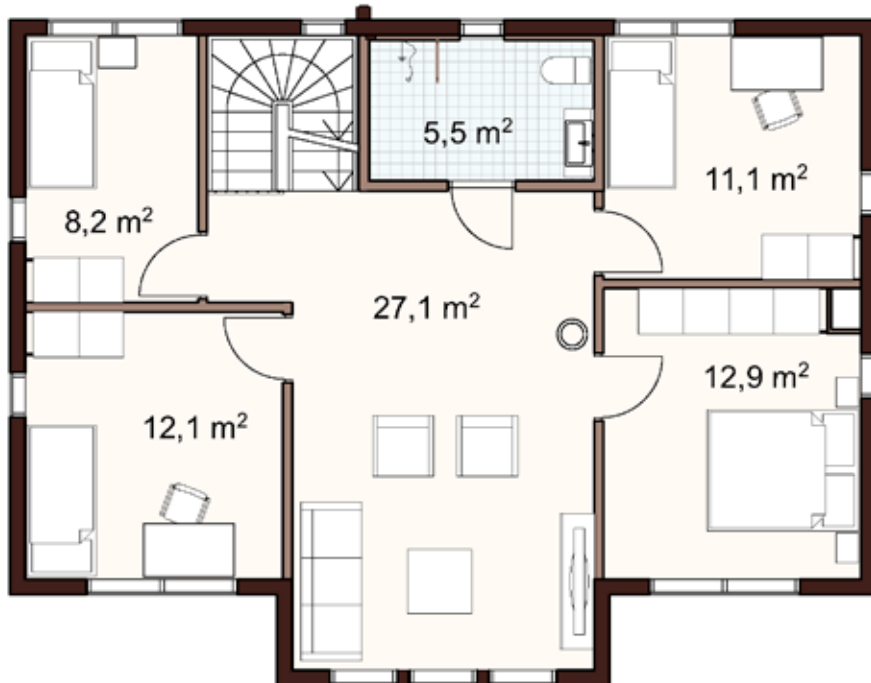


CLASSIC

The designs are available in a range of sizes and layouts that can be adjusted according to your individual needs.



Floor plan scale 1:100



The Louna collection features houses of different sizes, including one and a half and two storey models.

LOUNA 180 1A

-	
Gross area	180.0 m ²
Net area	163.5 m ²
Terrace area	18.5 m ²
ID	24598



CLASSIC



With the lattices, exterior colour and interior decoration of your choosing, you can modify this model to suit your taste.





A STORY OF



A FAMILY

"During this time, the scent of wood has become as important to me as the scent of the sea. It makes me feel at home — calm, relaxed and safe."



CLASSIC

Honka *Louna*

Six months in a log house,
how do you feel now?





"It's easy to breathe here."
-Kaisa, the customer

CLASSIC

” **W**E’VE BEEN LIVING here for six months. What kinds of feelings has the log house evoked in us? Has living here met our expectations? Is living in a log house differed from living in our previous homes? Have I noticed any clear differences? During the first weeks in our new home, I kept sniffing the air and hoping to get a sudden realisation of how great the indoor air quality in a log house is. But that never happened during the first weeks, and I forgot all about it. However, when we returned home from a trip, it all came back to me in a flash. The scent of wood was almost intoxicating, and at that moment I understood that I had just got used to the fresh and pure indoor air in our home.”

“I strongly believe that the greatness of log houses lies in the fact that regardless of whether you look at the walls from the inside or the outside, all you can see are the same pines that used to grow in our own forests.”



“Living in a log home is good for our family.”

CLASSIC





"Who knows, perhaps a grandchild of ours or even their child will live in this house someday."



"There's nothing extra or unnecessary."



Honka Louna

Building type Detached house

Floor area 204.5 m²

Living area 186.5 m²

Rooms 3 bedrooms + hallway + living room + kitchen + walk-in closet + 2 toilets + 2 bathrooms + sauna + utility room

Log Honkarakenne lamellar log FXL 204 mm, zero corner

Year of construction 2018

Location Kotka, Finland

Honka ID 3507212

CLASSIC





Honka *Kunnas*

Feel good living. Kunnas is a stunning home with a traditional look, featuring an impressive pillared entrance that gives it a wonderfully distinguished feel. The dining area can be found in an atmospheric bay-windowed space. The bedrooms are upstairs and open onto a wonderfully light shared living space giving access to a balcony.



KUNNAS 163 1A

–

Gross area 163.0 m²

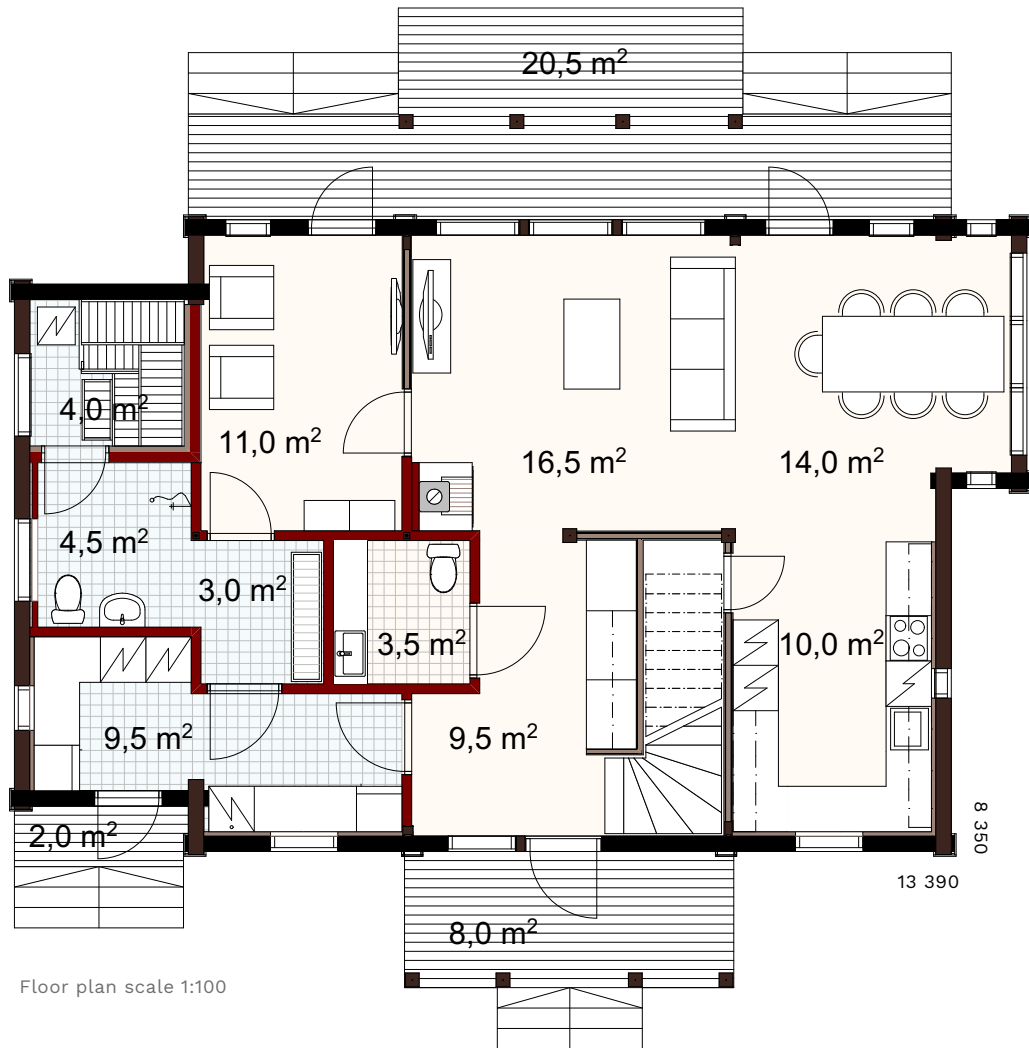
Net area 150.0 m²

Terrace area 37.0 m²

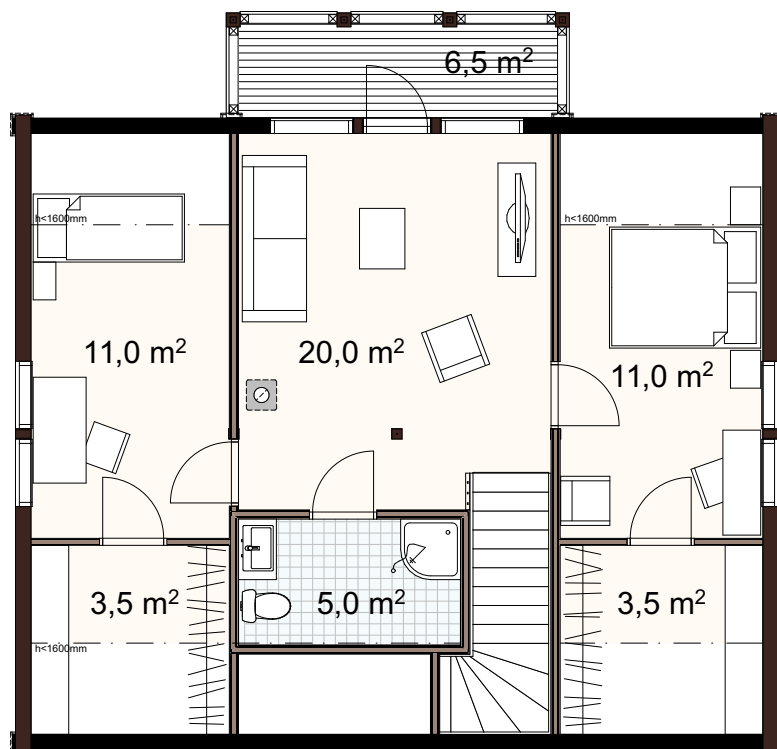
ID 50011

Find more floor plan options at [honka.com](https://www.honka.com)

Now Kunnas is also available in a one, one-and-a-half and two-storey version, with floor plans that meet a range of modern needs.



CLASSIC



The designs are available in a range of sizes and layouts that can be adjusted according to your individual needs.



Honka *Pouta*

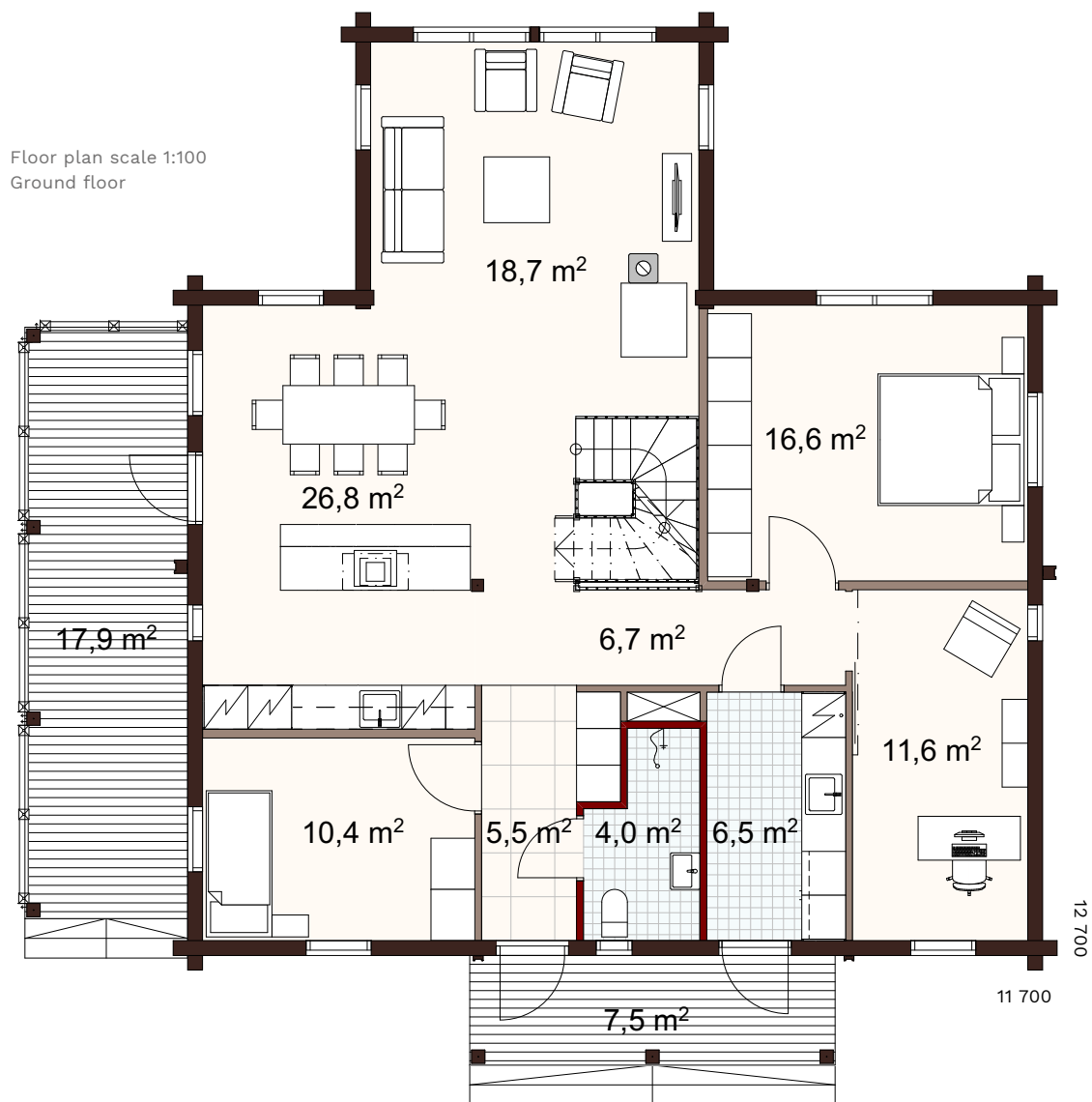
Honka Pouta is a sturdy log mansion that is ideal for a hillside plot. Thanks to a large living room with a high ceiling and spacious bedrooms, this house is perfect even for a large family. The impressive landscape window creates a feeling of space and frames the rural surroundings, where it fits in perfectly. Beautiful glazing bar windows and a traditional baking oven create the interior atmosphere.

POUTA 236 1A

-	
Gross area	236.0 m ²
Net area	218.0 m ²
Terrace area	35.5 m ²
ID	50015

Find more floor plan options at [honka.com](https://www.honka.com)

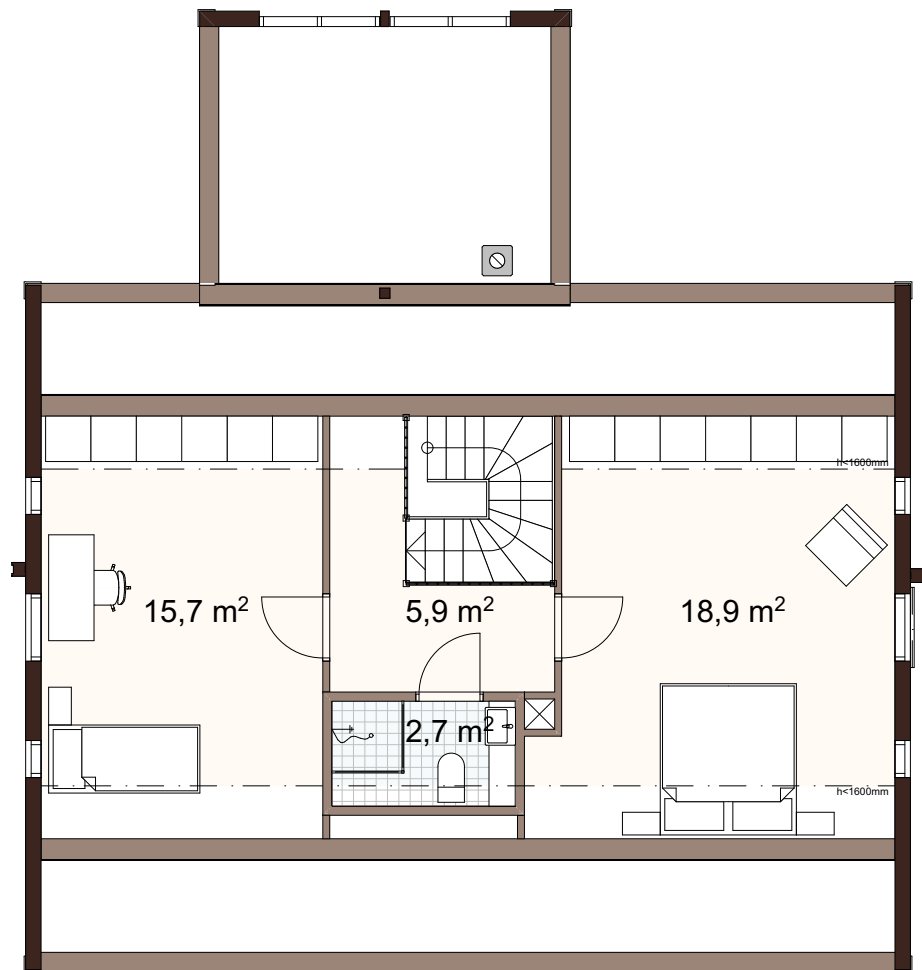
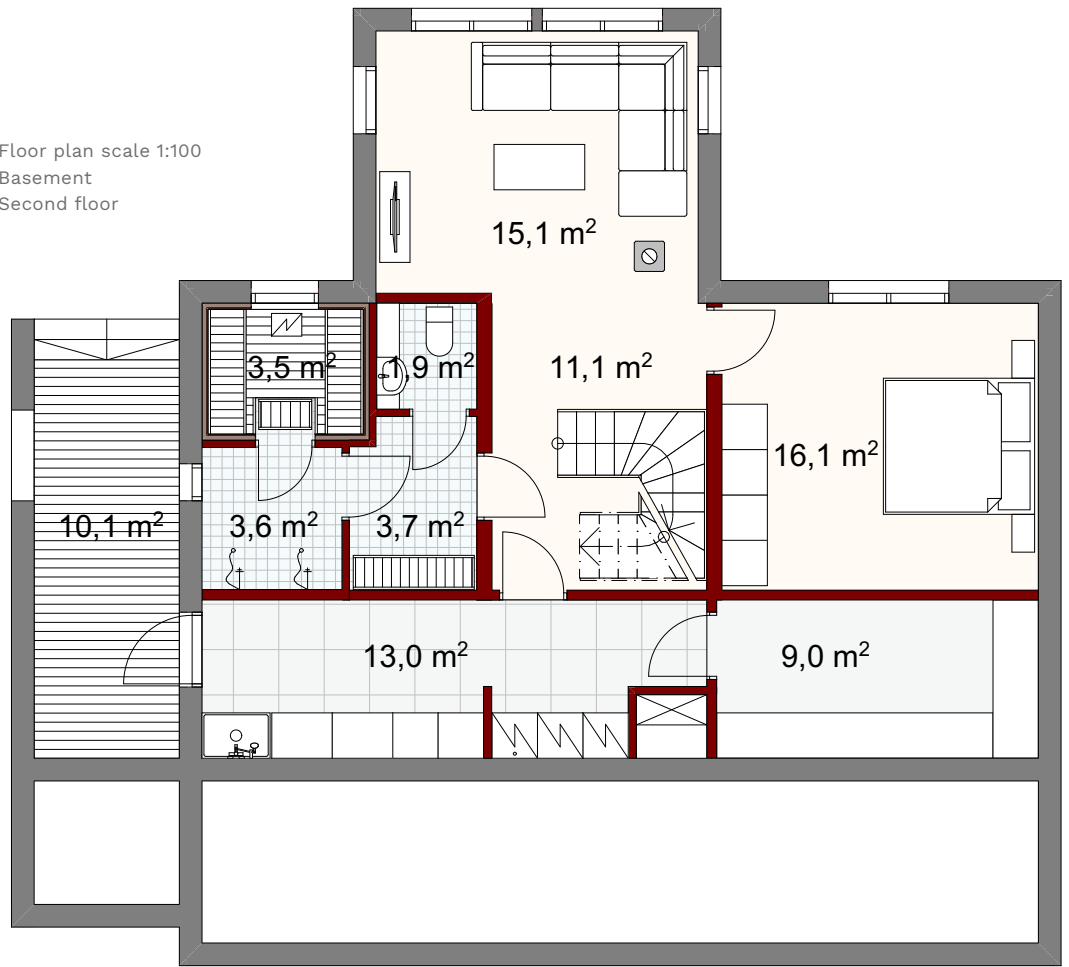
The model has a large roofed side terrace, where it is pleasant to sit in the shade on a beautiful summer's day.



CLASSIC

The designs are available in a range of sizes and layouts that can be adjusted according to your individual needs

Floor plan scale 1:100
 Basement
 Second floor



Honka Pouta can be expanded with a basement and attic, bringing the number of bedrooms up to six, and with a living room both on the main floor and basement.



CLASSIC



Beautiful glazing bar windows and a traditional baking oven create a warm atmosphere.



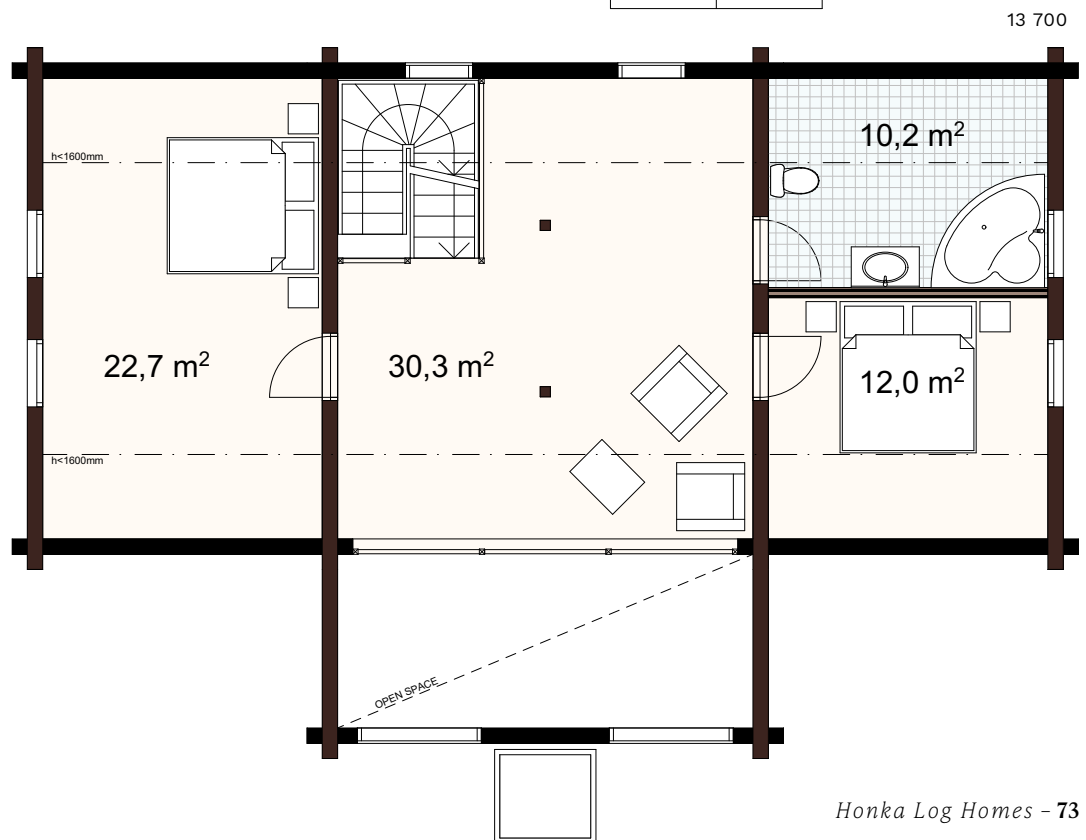
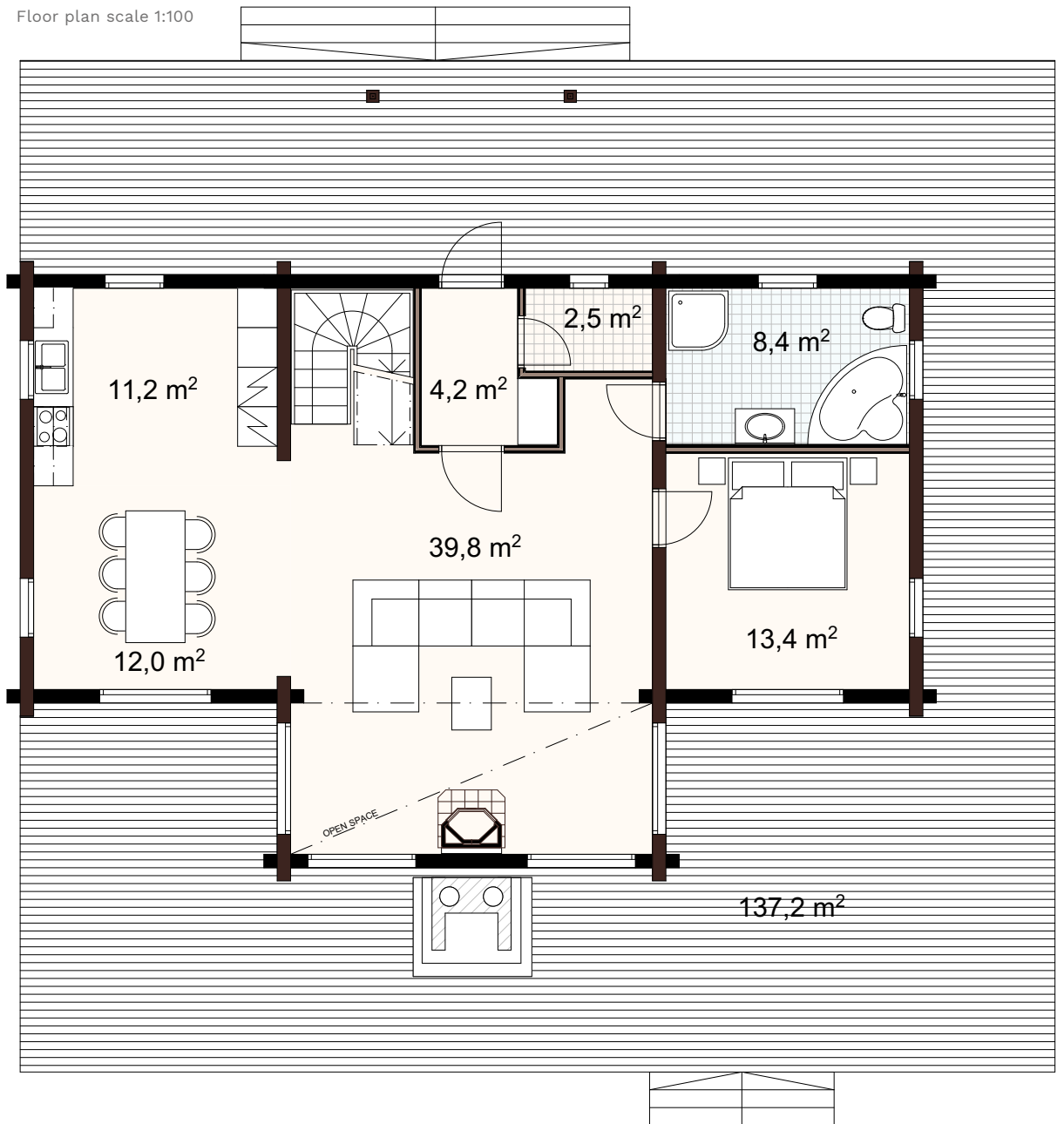


Honka *Lumikello*

Honka Lumikello is a cosy log home with plenty of Alpine charm. Popular in mountainous regions, this design offers a spacious Net area with great views and a space for a fireplace. Dorm windows fill the bedrooms with natural light.

LUMIKELLO 190 1A

-	
Gross area	189.0 m ²
Net area	172.5 m ²
Terrace area	137.0 m ²
ID	27639



The exterior chimney gives this house its distinctive look.

The designs are available in a range of sizes and layouts that can be adjusted according to your individual needs.



Honka *Serenata*

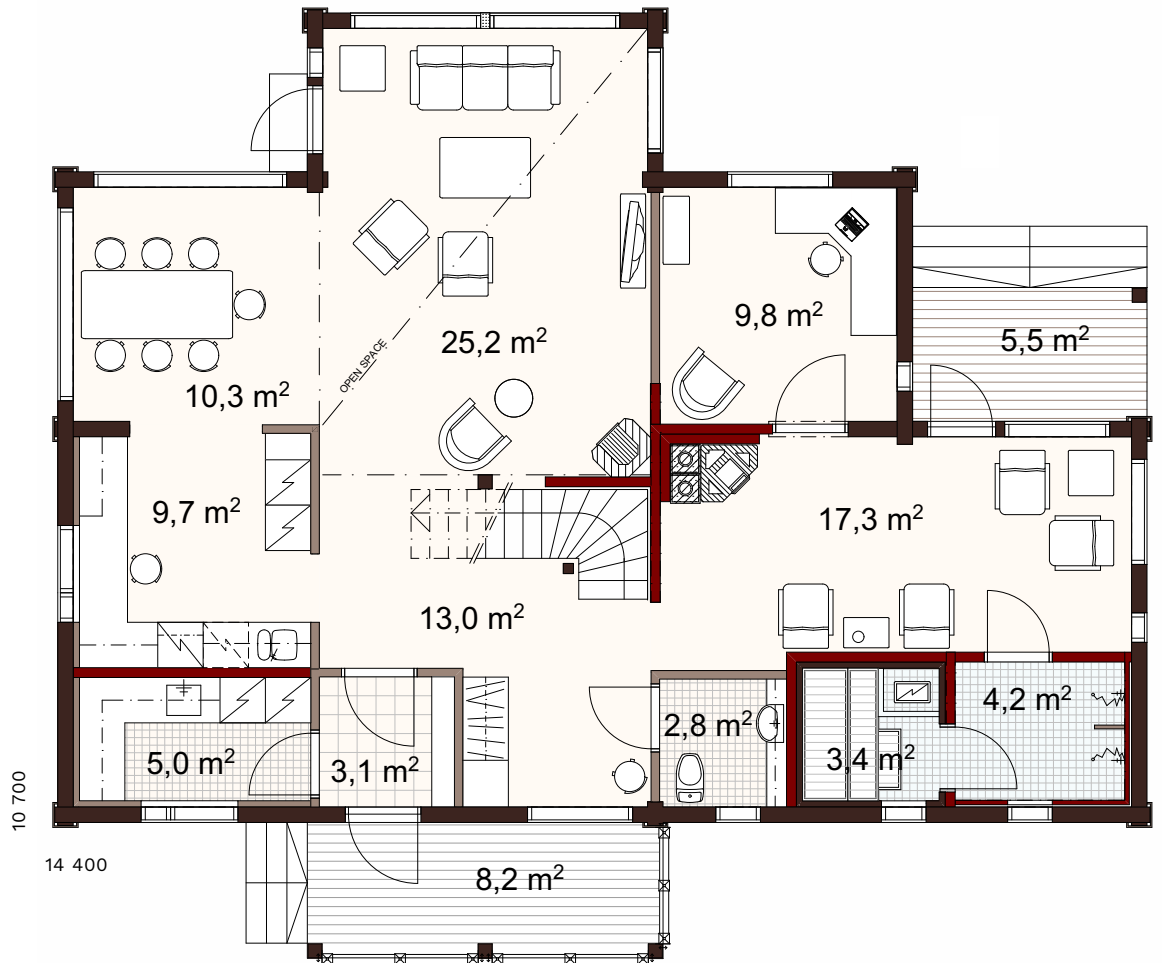
The Honka Serenata house is a popular, traditional log home with classic log house windows. This model is the epitome of open plan living with the vast ground floor space and vaulted ceilings that really show off the fully glazed feature gable.



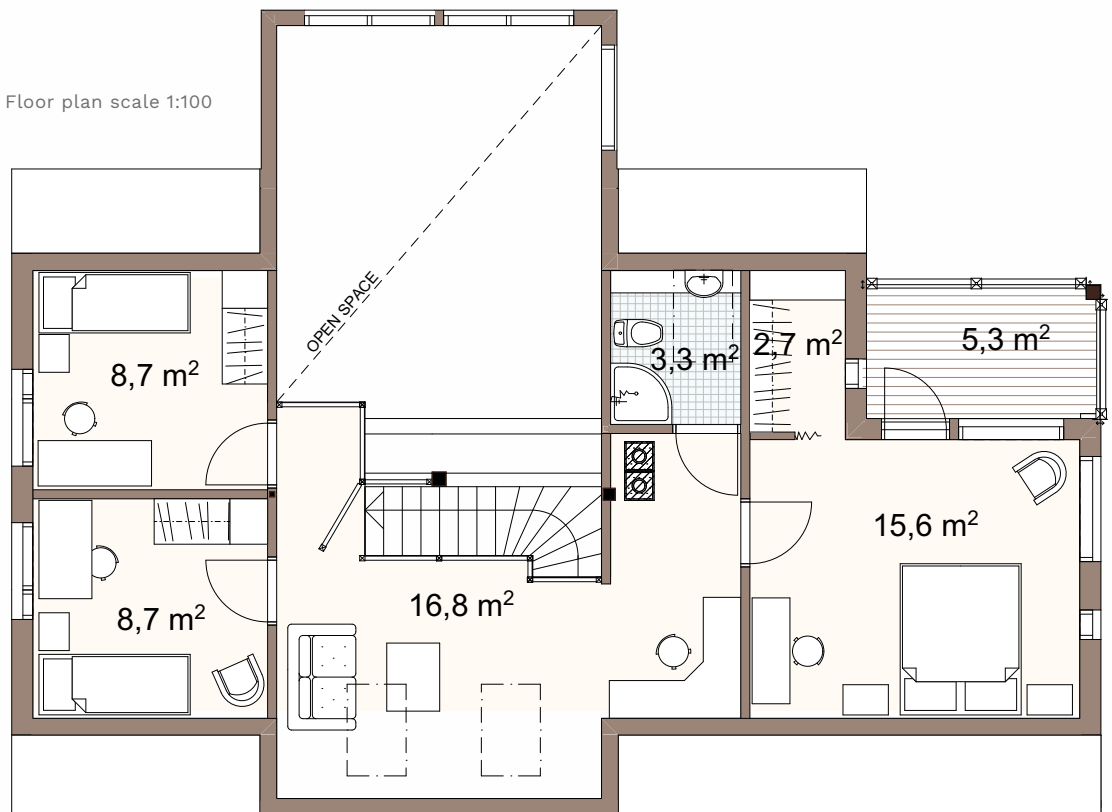
SERENATA 190 1A

–	
Gross area	193.0 m ²
Net area	170.5 m ²
Terrace area	19.0 m ²
ID	10991

There are three generous bedrooms on the first floor and with a large study downstairs there is the option for a fourth bedroom.



Floor plan scale 1:100



The designs are available in a range of sizes and layouts that can be adjusted according to your individual needs.



Honka *Soihtu*

Wonderfully light-filled. Soihtu's large yet cozy windows flood the living and dining space with a wonderful natural light. The roof design allows for larger windows and lends Soihtu its distinctive appearance. The porch area can be glazed, so that you can enjoy the outdoor living season for that little bit longer.

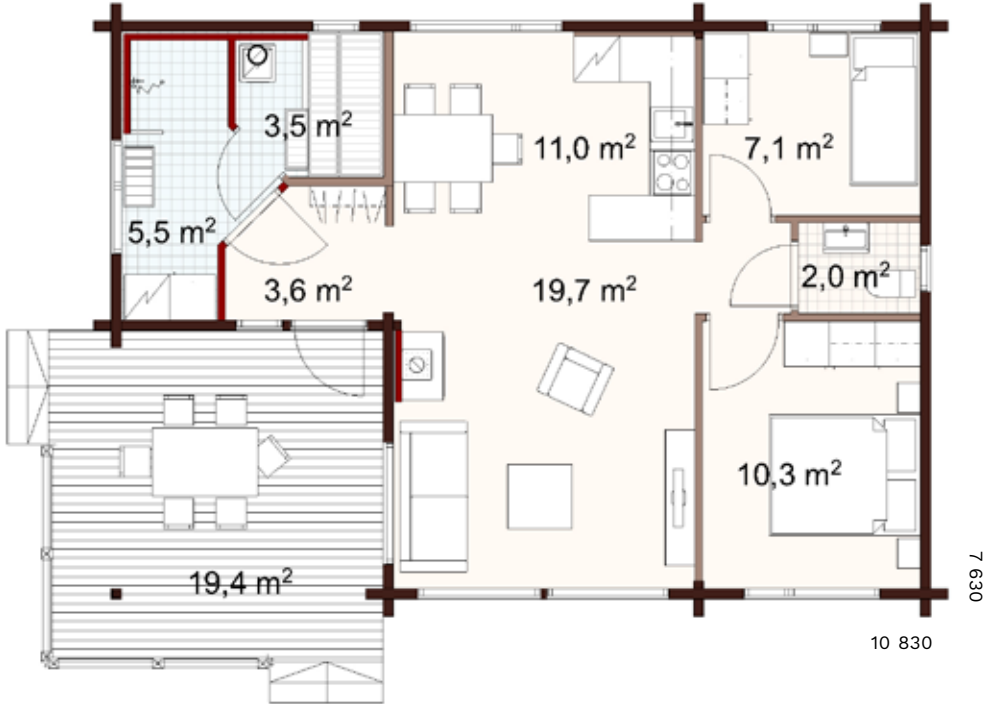
SOIHTU 70 1A

-	
Gross area	70.0 m ²
Net area	65.0 m ²
Terrace area	19.5 m ²
ID	18823

Sohtu's compact size belies its generous space.



Floor plan scale 1:100



CLASSIC

The designs are available in a range of sizes and layouts that can be adjusted according to your individual needs.





Holiday *houses*

A Honka holiday home is the perfect choice for everyone who wants to feel exclusive and in touch with nature. The main design theme for Honka log cabins and holiday homes is cosiness and functionality — after all, a holiday lodge is meant to be a haven of relaxation. Whether you dream of a beach house, a rustic log cabin in the woods or a luxurious villa, the charm of natural wood will create a warm and inviting environment where you want to return to again and again.

Explore our whole holiday house collection: [honka.com](https://www.honka.com)



Honka *Lux*

Honka Lux is named after Nordic light — its modern Scandinavian architecture is based around light. Floor-to-ceiling windows let in natural light from morning to night. The large covered veranda provides shelter from rain and sunshine. The collection includes I-, L- and U-shaped villas and a sauna building to match.

LUX 154 1A

—	
Gross area	154.0 m ²
Net area	141.5 m ²
Terrace area	49.0 m ²
ID	50022

Find more floor plan options at [honka.com](https://www.honka.com)

Timo Äkräs, the creator of the Lux concept, has designed a stylish, easily customised set of models.



Floor plan scale 1:100



The designs are available in a range of sizes and layouts that can be adjusted according to your individual needs. The window solutions and details may vary by country. Contact your local Honka representative for more information.



Honka *Ahto*

Honka Ahto is a classic, charmingly cosy and spacious log villa. When you walk through the door into the hall, you can already feel how luxuriously airy the space is. The gorgeous glazed end window opens from the living room and kitchen with views to the nature, while the high ceilings add to the feeling of openness. The rooms on the mezzanine floor offer plenty of space to accommodate children or guests.



AHTO 130 1A

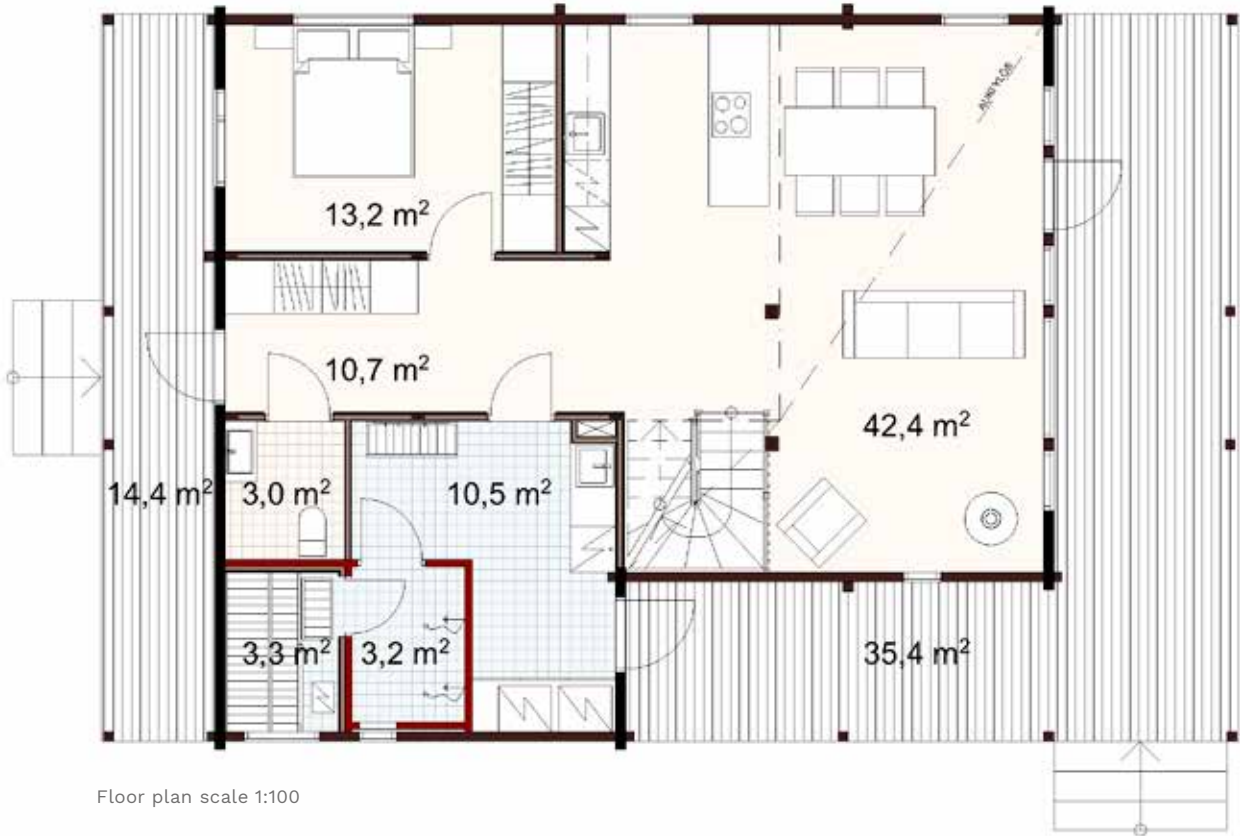
–	
Gross area	130.0 m ²
Net area	124.5 m ²
Terrace area	50.0 m ²
ID	50040

Find more floor plan options at [honka.com](https://www.honka.com)

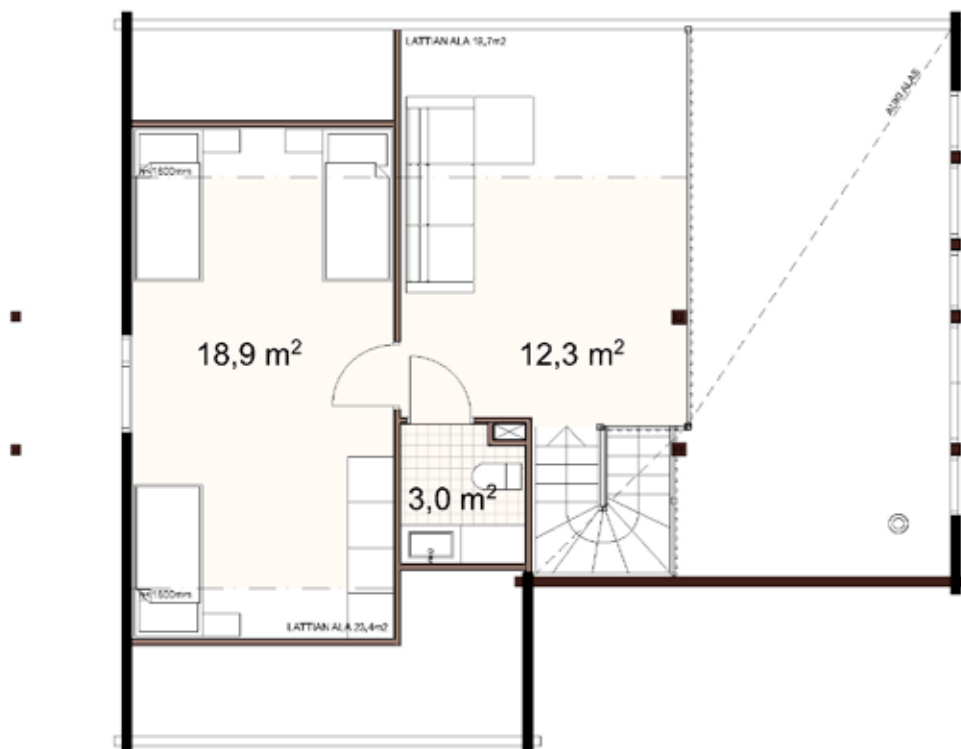
The classically beautiful Ahto fits beautifully into Lapland's scenery, but is also at home by the lake or sea.

11 090

9 610



HOLIDAY



The designs are available in a range of sizes and layouts that can be adjusted according to your individual needs. The window solutions and details may vary by country. Contact your local Honka representative for more information.



Honka *Lastu*

Honka Lastu is a spectacular holiday home that allows the surrounding nature to simply flow into the daily living experience. Both the main bedroom and living room feature luxurious, large landscape windows. The interior is well dimensioned and functional. The living room offers space to enjoy quality time together with friends or family, and the windows allow residents to enjoy the scenery even in the sauna or kitchen.

LASTU 115 1A

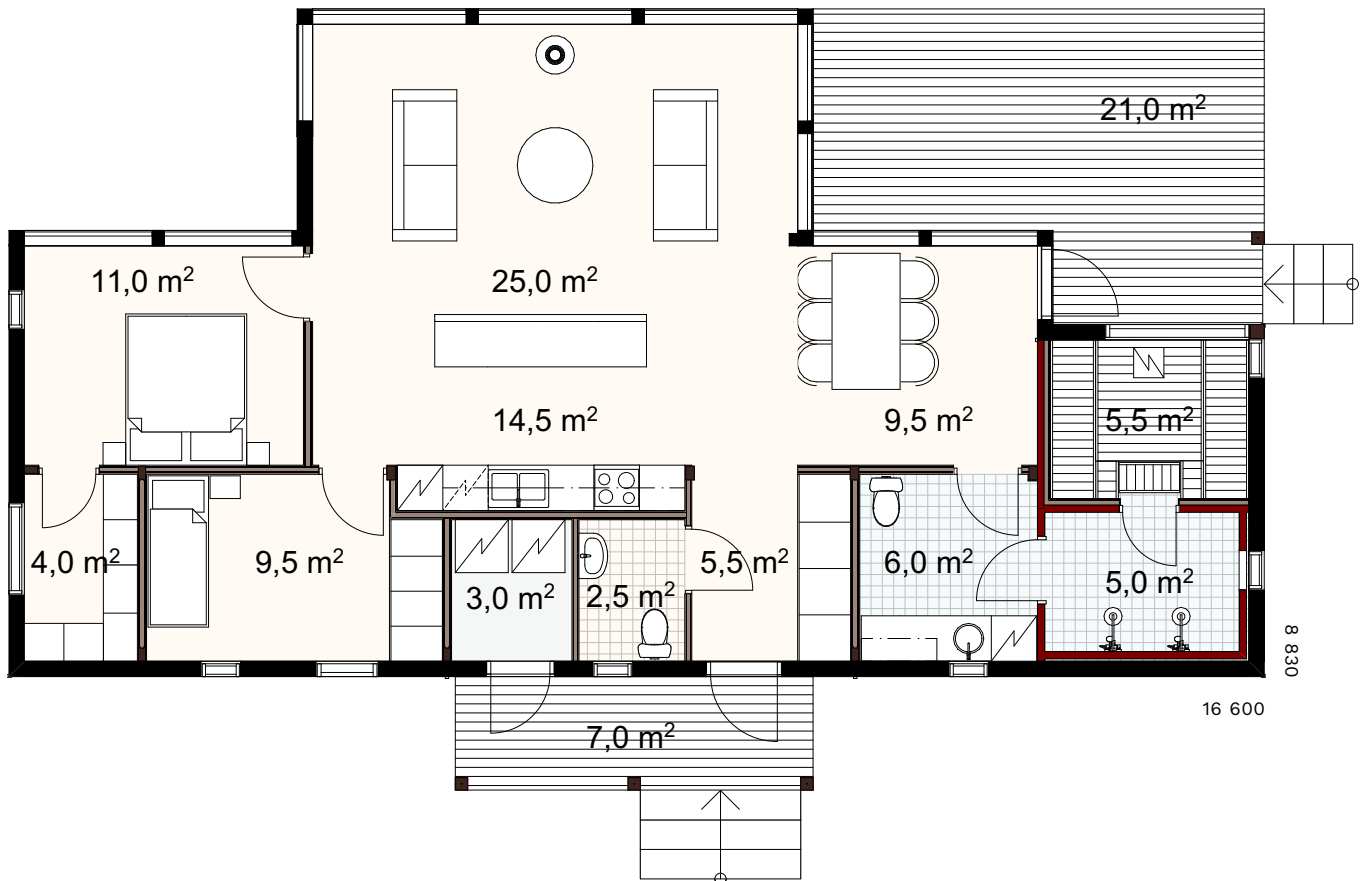
-	
Gross area	114.5 m ²
Net area	103.5 m ²
Terrace area	28.0 m ²
ID	50101

Find more floor plan options at [honka.com](https://www.honka.com)

With its linear design, the holiday home is a beautiful fit for the shores of the sea or a lake.



Floor plan scale 1:100



The designs are available in a range of sizes and layouts that can be adjusted according to your individual needs. The window solutions and details may vary by country. Contact your local Honka representative for more information.



Honka *Halla*

The new-look Halla's attractive, modern appearance is irresistible. The exterior architecture has an internationally popular shell-like structure and covered terraces provide shelter. Cosy lounges nestle under the sloping roof. Halla's living room provides a wonderful view of nearby nature. In the larger versions, you can also admire the landscape from the sauna.

HALLA 164 1A

-	
Gross area	164.0 m ²
Net area	150.0 m ²
Terrace area	89.5 m ²
ID	50033

Find more floor plan options at [honka.com](https://www.honka.com)

The broad and relatively low Halla will beautifully adorn hilltop and other settings.



Floor plan scale 1:100

16 950



The designs are available in a range of sizes and layouts that can be adjusted according to your individual needs. The window solutions and details may vary by country. Contact your local Honka representative for more information.



Honka *Halti*

The wonderful Honka Halti offers experiences of nature and the comfort of living. The living room provides ample space for enjoying time together and stunning scenery. The kitchen is separate from the living areas and the hall has plenty of storage space for outdoor clothing and leisure equipment.

HALTI 100 1A

-	
Gross area	100.0 m ²
Net area	94.0 m ²
Terrace area	61.5 m ²
ID	33470

Find more floor plan options at [honka.com](https://www.honka.com)

A sauna and utility room are located at the end of the building.



Floor plan scale 1:100



The designs are available in a range of sizes and layouts that can be adjusted according to your individual needs. The window solutions and details may vary by country. Contact your local Honka representative for more information.



Honka *Tuuli*

Only large landscape windows and beautiful log structures separate the large living areas of Tuuli villas from the wilderness. With its combined living room and kitchen, the living area provides spectacular views of the surrounding natural landscape; the sleeping areas are located in their own, peaceful wings; and a covered terrace leads from the living area to a stylish sauna.

TUULI 100 1A

-	
Gross area	99.5 m ²
Net area	92.0 m ²
Terrace area	53.0 m ²
ID	36658

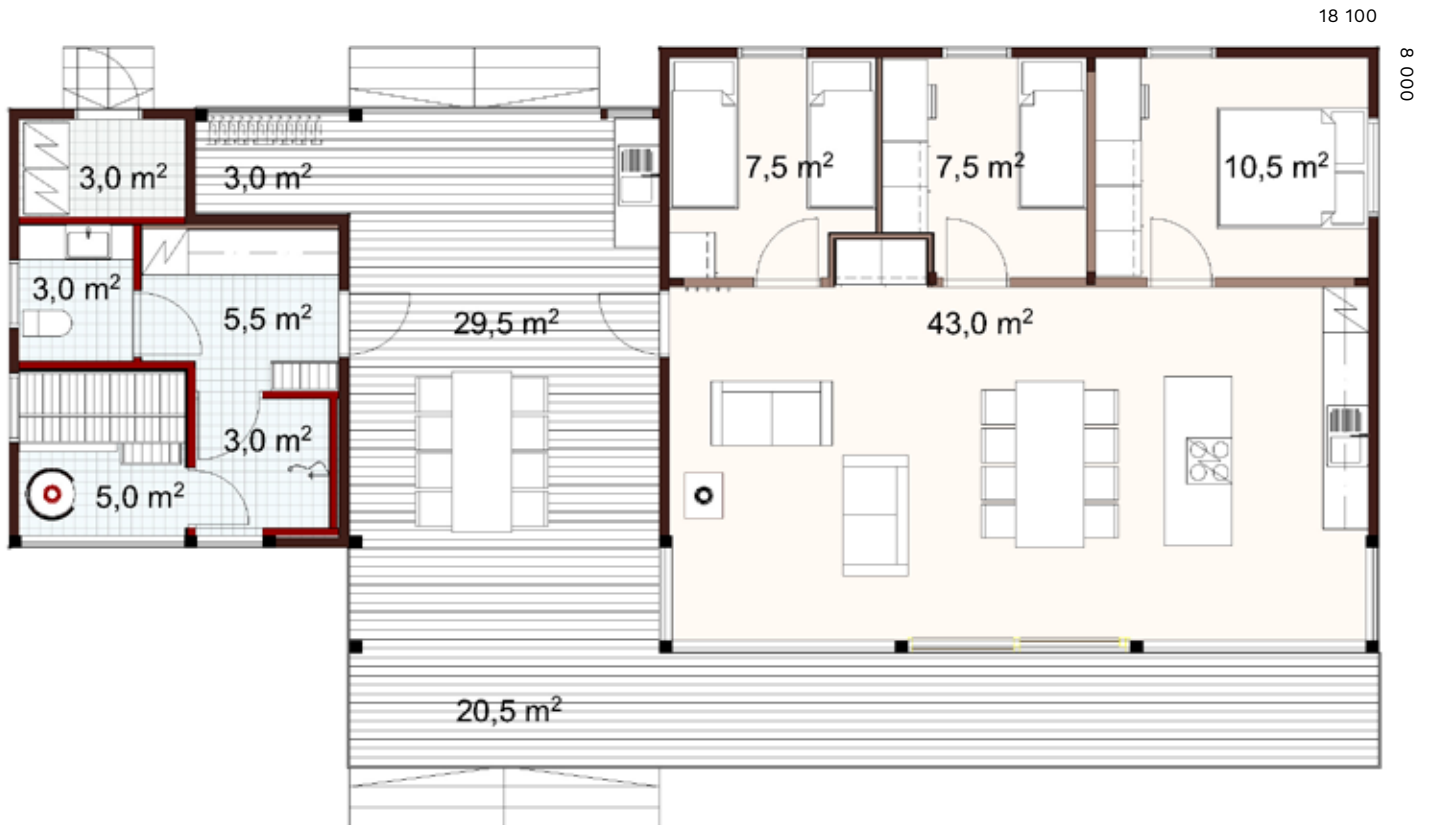
Find more floor plan options at [honka.com](https://www.honka.com)

”The scenery feels part of the Tuuli villa’s decor.”

TUULI PETÄJÄ-SIRÉN, ARCHITECT, HONKA



Floor plan scale 1:100



The designs are available in a range of sizes and layouts that can be adjusted according to your individual needs. The window solutions and details may vary by country. Contact your local Honka representative for more information.



Honka *Vista*

The stylish Honka Vista offers great views of the surrounding nature. The floor plan is based on separating the spaces into two stories based on their intended purpose: downstairs you have the living spaces and spacious foyer and utility rooms and upstairs you find the bedrooms and sauna facilities.

VISTA 120 1A

-	
Gross area	120.0 m ²
Net area	112.0 m ²
Terrace area	23.5 m ²
ID	30225

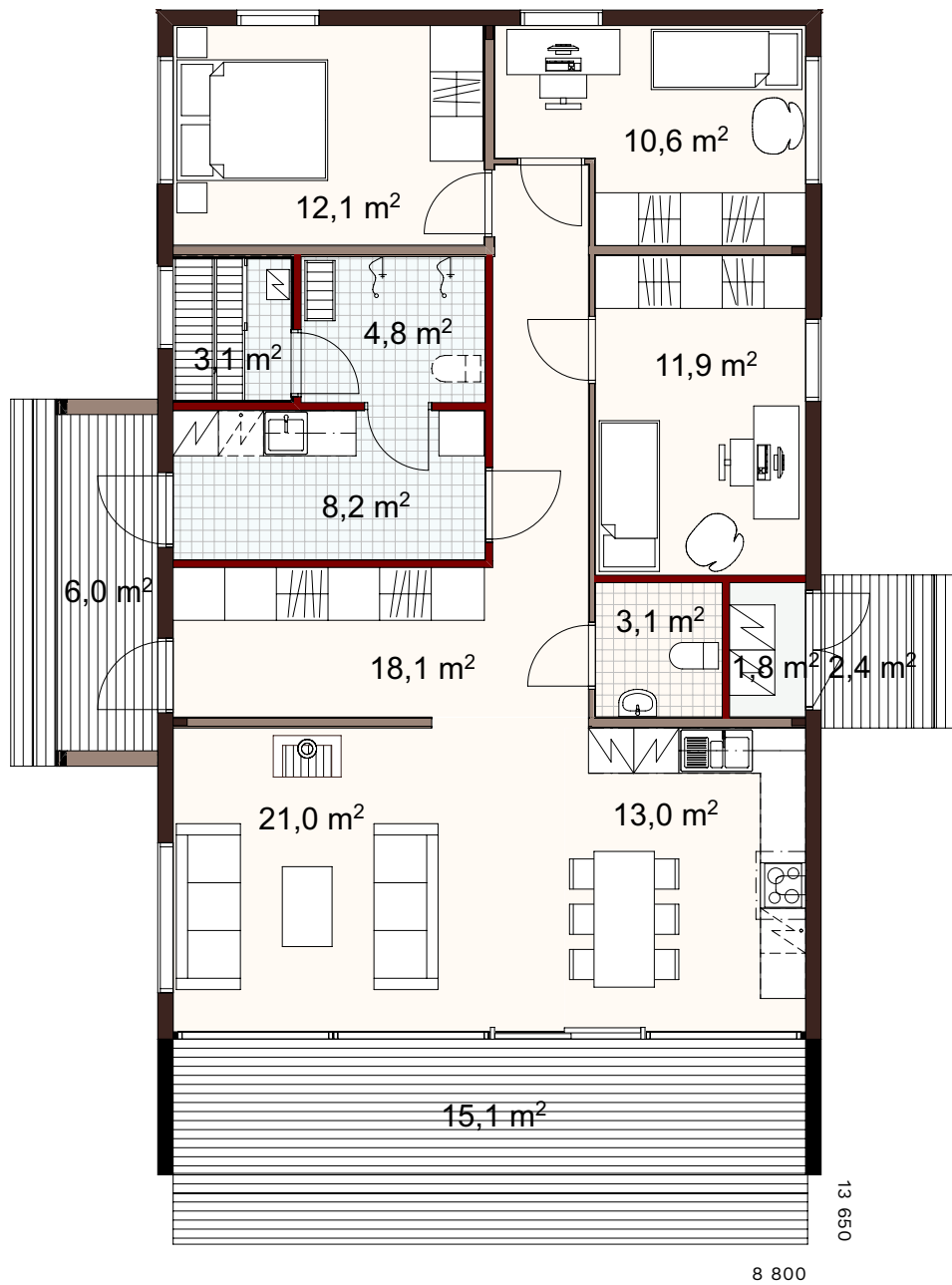
Find more floor plan options at [honka.com](https://www.honka.com)

“A properly built log house is tightly sealed, damp-proof and durable.”

LASSE, SITE MANAGER, HONKA



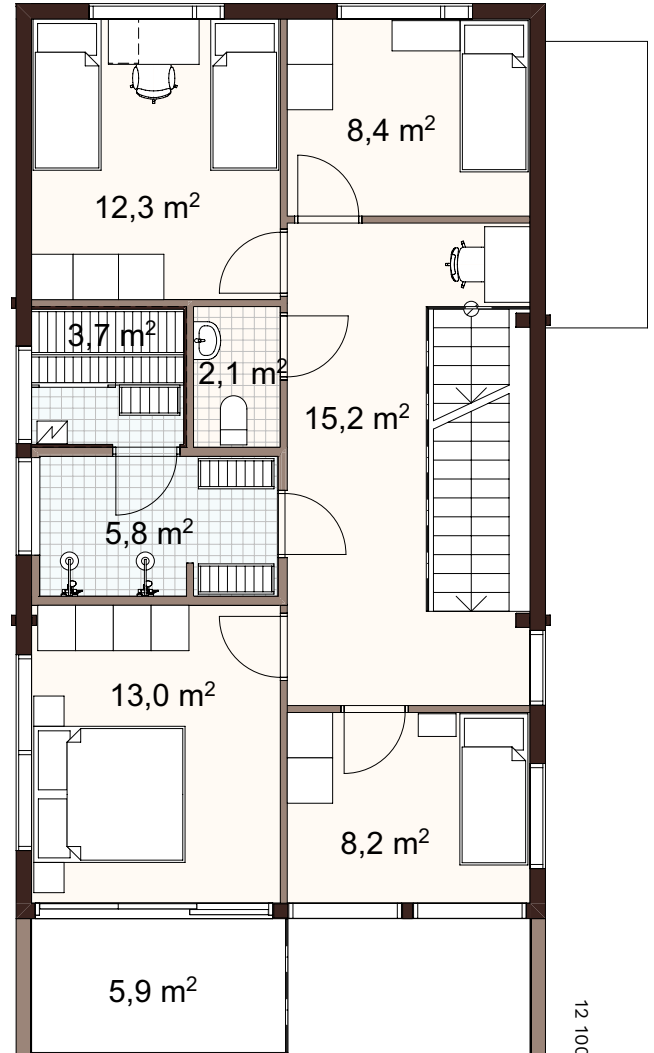
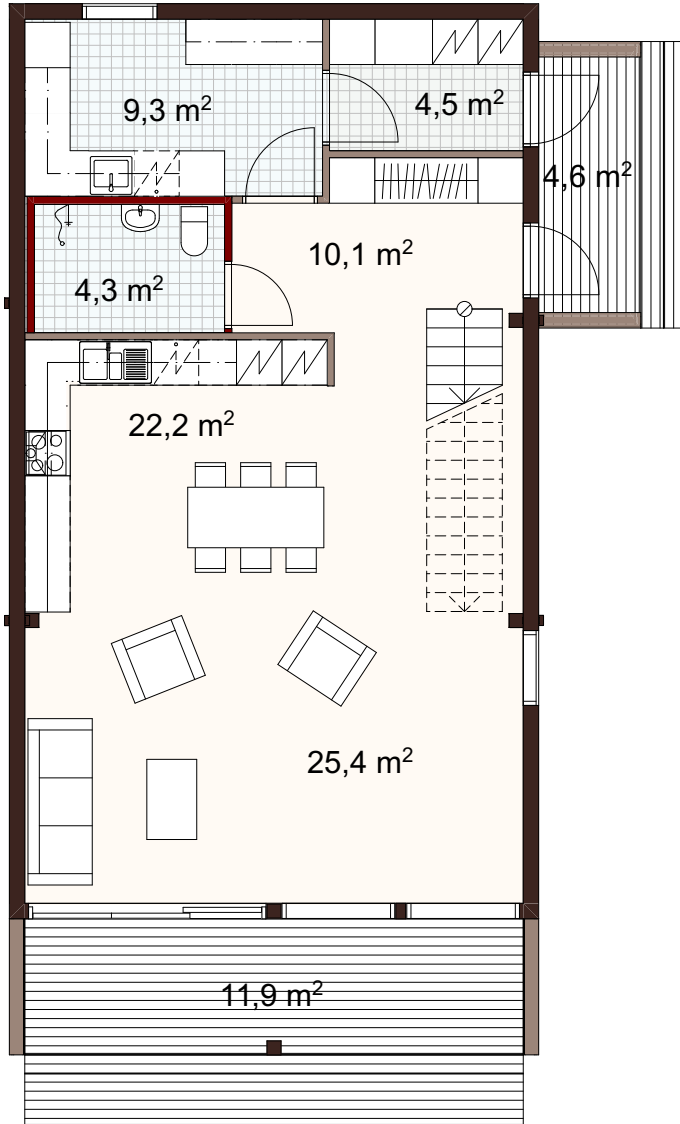
Floor plan scale 1:100



HOLIDAY

The designs are available in a range of sizes and layouts that can be adjusted according to your individual needs. The window solutions and details may vary by country. Contact your local Honka representative for more information.

Floor plan scale 1:100



7 000

12 100

The Vista house is an elegant choice for a home or recreational dwelling.

VISTA 165 1A

-	
Gross area	164.0 m ²
Net area	148.5 m ²
Terrace area	22.0 m ²
ID	27155



HOLIDAY



The Vista is also an especially good fit for small and narrow city lots.



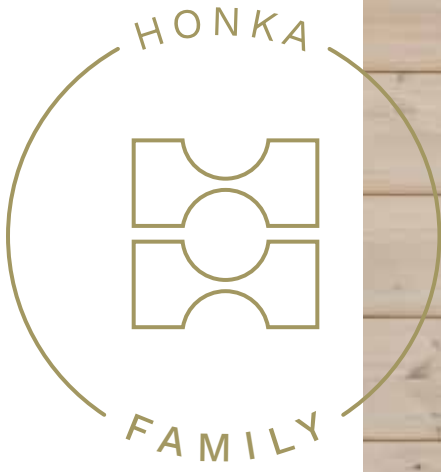
A STORY OF



A photograph of a woman and a young girl standing in a kitchen. The wall behind them is made of horizontal wooden planks. The woman, on the right, has long blonde hair and is wearing a black long-sleeved top and tan leggings. She is seen from the back. The girl, on the left, has blonde hair tied back and is wearing a light-colored sweater and black pants. She is looking towards the left. The kitchen has white cabinets and a countertop. A small shelf with jars is visible on the wall to the left.

A FAMILY

The size of the kitchen-cum-living room was increased, because that was where the family was going to spend most of the time anyway.



HOLIDAY

Honka *Vista*

Modern log cabin for an active family





The family did not intend to get a cottage, but ended up building a leisure villa in Sotkamo, and now spend almost every weekend there.

HANNA AND JOHANNES HAD BEEN spending holidays in cottages in Sotkamo for years. Occasionally they discussed getting their own place, but kept putting it off, as Hanna especially wasn't too keen because of the extra work it would mean.

"First Johannes's brother built a place in Vuokatti. When we visited it, our 'cabin fever' got worse, and we were on and off looking for a suitable plot. My instructions were that the plot must have some rock, forest turf and pine forest," says Hanna.

A little over three years ago they found a plot in Sotkamo in what was not a pine forest but a birch forest, with the yard covered in grass, and there was nothing resembling a rock surface. Nevertheless, it was in an area where lakeside plots were extremely sought after so the couple acted promptly even though the plot was not exactly what Hanna had in mind.

"When the whole family went to see the place, it looked really idyllic. The sunsets were spectacular, and the deal was made very quickly. We also heard from the broker that the owner was very keen to sell especially to us."

“Then the coronavirus arrived and our hobbies were on hold, so Johannes got the idea that we’re going to start building!” They asked offers from three companies and then picked a Honka log villa, because the Vista model seemed to have the most functional floor solution.

The family plans to spend a lot of time at the cottage also during winter. Hanna and Johannes like to ski a lot, and the terrain is ideal for that. Other hobbies, such as golf, are also close by. The children enjoy downhill skiing in winter. Many of their friends also have a cottage in the area, which was an important factor.



HOLIDAY



The active family of six cherish the lake view and the leisure opportunities.



“We’d give it a grade of 10 out of 10. Everything has gone perfectly, and so far at least we have no regrets.”



”It worked almost as such except that we took out the sauna, because we’re going to have a separate sauna building near the lake. There were also some other small modifications.”



Villa Huuskonniemi

House Modified Honka Vista house model by Honka Designer Sakari Kallio

Log Non-settling Honka Fusion log, zero corner, Honka Frame window wall

Floor area 98.5 m² Living area: 90.5 m²

Rooms Living room + kitchen, hallway, utility room, bathroom, 2 bedrooms, storage, sauna building

Log surface treatment Interior: twice with Tremax and after that: Suomen Luonnonmaali Hento log wax, colour KV02
Exterior: Pihkatex, colour T3036. Black shell-like structure with Teknos Nordica Matt, colour black

Floor Timberwise parquet colour Cotton

Year of construction 2020–2021

Honka ID 4002716

HOLIDAY





Honka *Metso*

Honka Metso is the ideal solution for harmonious living in a naturally beautiful environment — in the middle of the woods, in a mountain meadow or by a lake. The main functionalities are located on the ground floor with the spacious living room and wonderfully high ceilings. On the first floor there is a bedroom with a balcony that enjoys its own privacy.



METSO 120 1A

–

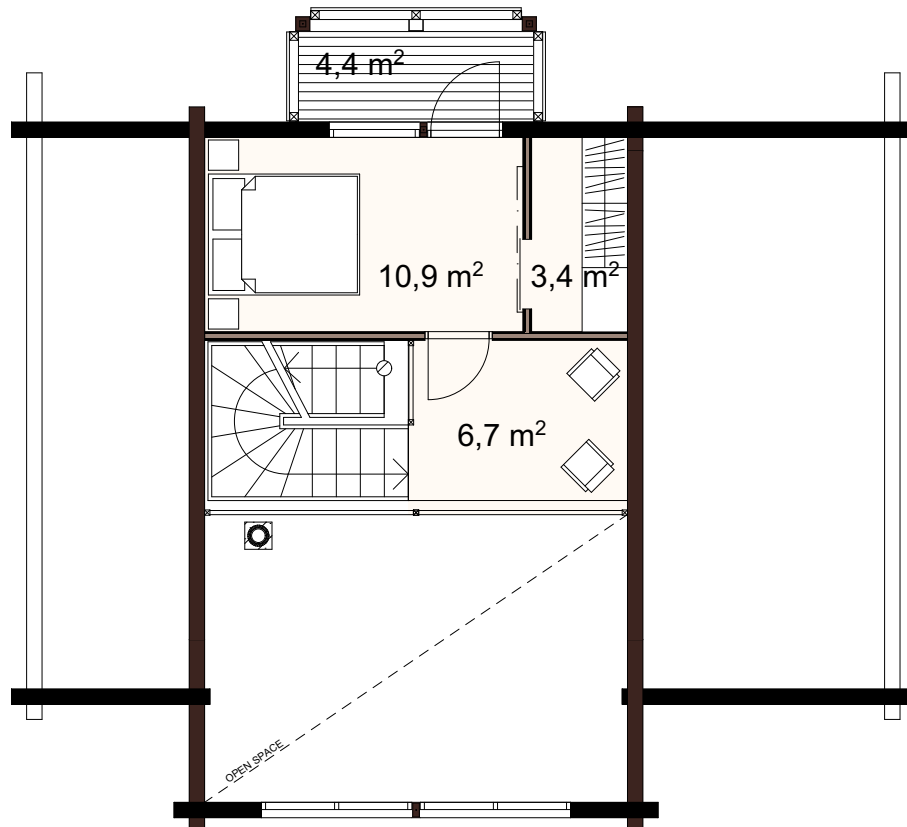
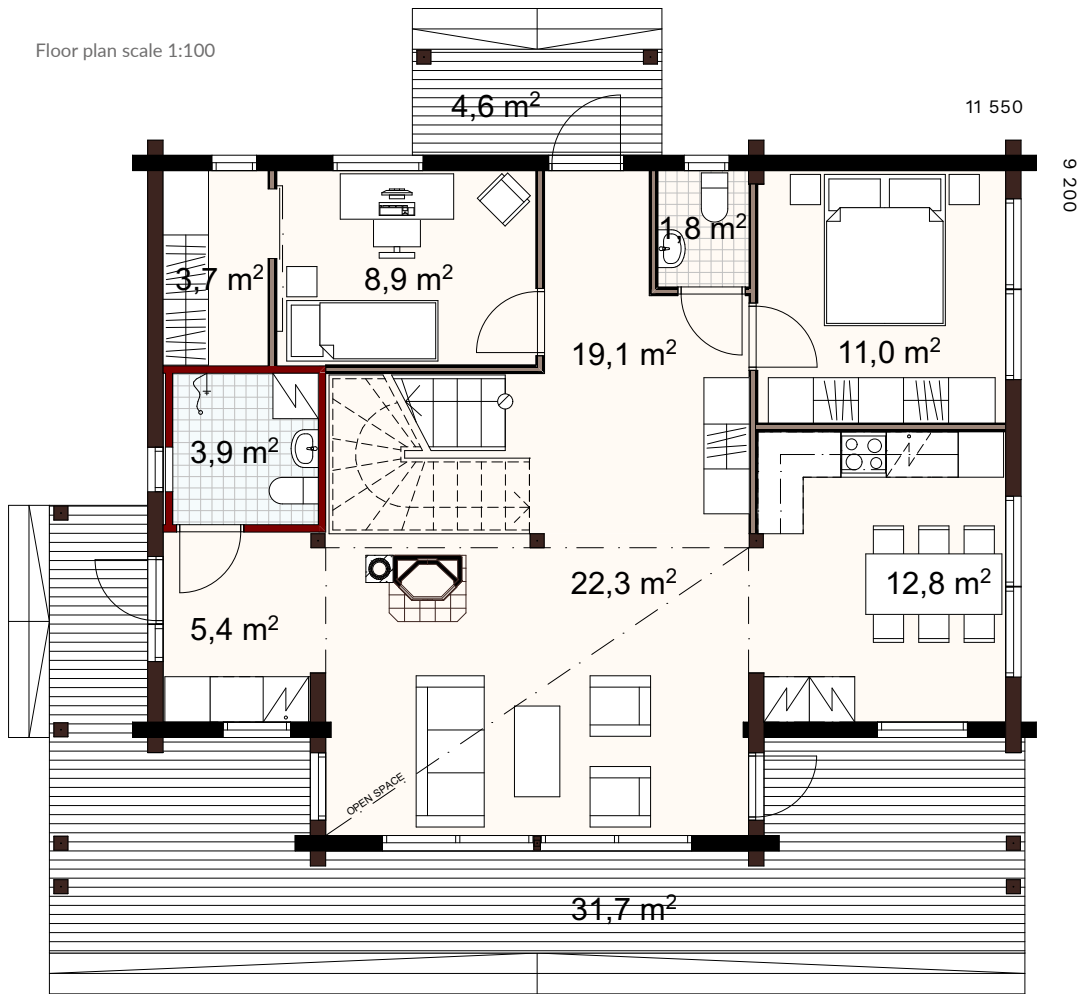
Gross area 122.5 m²

Net area 111.0 m²

Terrace area 41.0 m²

ID 27585

Floor plan scale 1:100



HOLIDAY

The designs are available in a range of sizes and layouts that can be adjusted according to your individual needs.



Honka *Sirius*

The stylish Honka Sirius is built using non-settling Honka Fusion logs and featuring a front elevation made entirely of glass. In this truly exceptional holiday home, nature is an ever-present feature of your interior living environment throughout the year. The kitchen, dining and Net areas form an airy and flowing space, the ideal spot for enjoying the scenery around you.



SIRIUS 79 1A

–

Gross area 76.5 m²

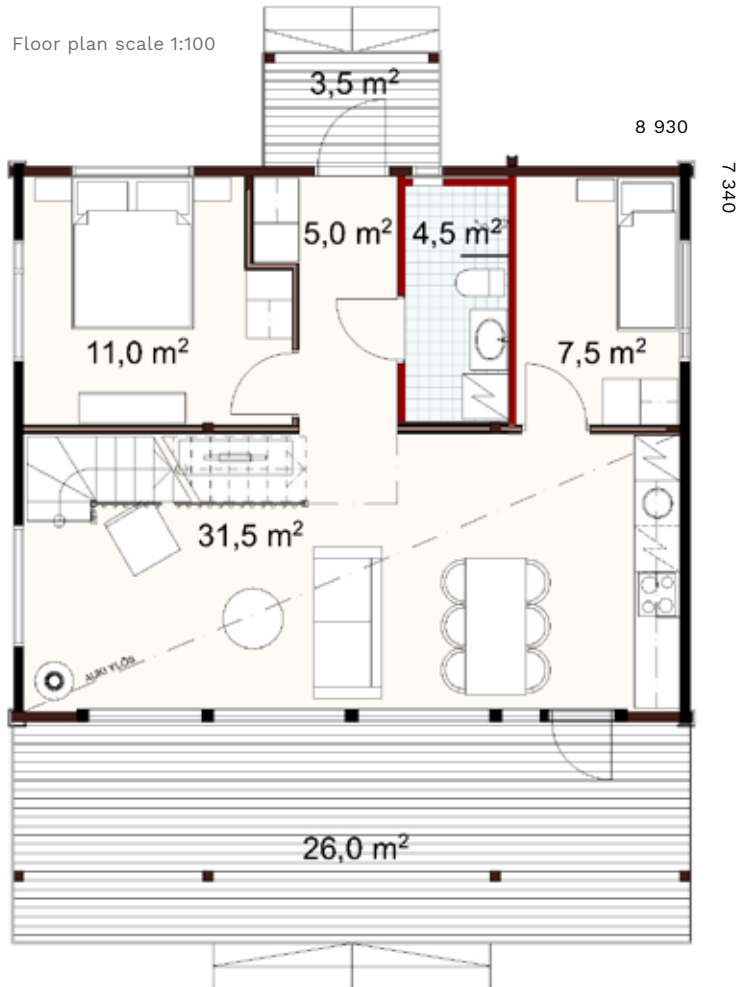
Net area 72.0 m²

Terrace area 29.5 m²

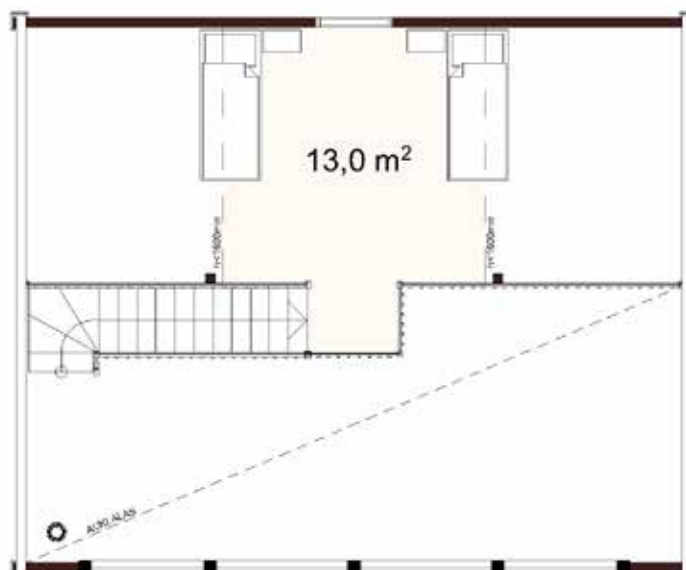
ID 50102

Find more floor plan options at [honka.com](https://www.honka.com)

Thanks to the generous ceiling height, this holiday home feels wonderfully spacious at all times.



HOLIDAY



The designs are available in a range of sizes and layouts that can be adjusted according to your individual needs. The window solutions and details may vary by country. Contact your local Honka representative for more information.



Honka *Lintukoto*

Honka Lintukoto is a cosy, compact cabin for natural living and a fun, modern and cheerful design. Natural wood and open space with high ceilings bring peace and comfort to these small cabins. The large windows open a wonderful view of the surrounding nature. The collection includes 80 m², 62 m² and 40 m² cabins and smaller sauna cabins.

LINTUKOTO 86 1A

-	
Gross area	86.0 m ²
Net area	80.5 m ²
Terrace area	8.0 m ²
ID	50105

Find more floor plan options at [honka.com](https://www.honka.com)

The Finnish word 'Lintukoto' refers to a birdhouse.



Floor plan scale 1:100



HOLIDAY

The designs are available in a range of sizes and layouts that can be adjusted according to your individual needs.





Custom *log homes*

Do you dream of living in a contemporary or traditional house designed specifically for you, with your family's particular lifestyle being a part of the design? Making the custom or bespoke log home a reality is probably a lot easier than you might think. Because we are all different, we each want to live in a house that reflects our own personality. Building a new home is one of the biggest life decisions you will ever make, and for many people it's a once in a lifetime event. Get inspired by our custom Honka log homes!

Explore how to create a custom log house: [honka.com](https://www.honka.com)



A STORY OF

A modern log home with a large deck and a tree in the foreground. The house features a dark grey exterior and a large glass window. The deck is made of light-colored wood. A tree with green leaves is in the foreground on the right. The text "A FAMILY" is overlaid in the center.

A FAMILY

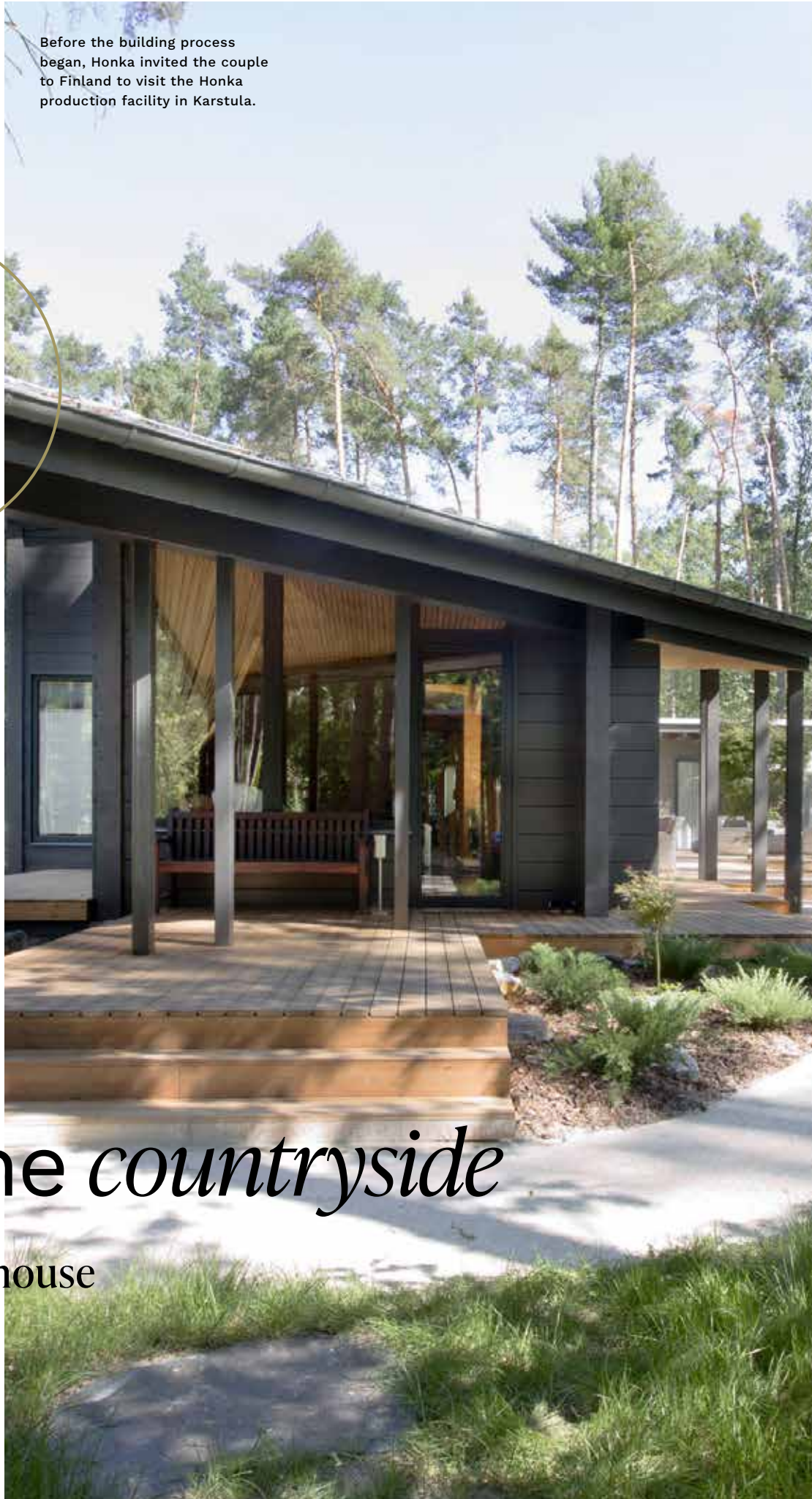
Before the building process began, Honka invited the couple to Finland to visit the Honka production facility in Karstula.



CUSTOM LOG HOMES

Serene *countryside*

A stunning house
in Prague





With the help of an architect a Czech couple realised their ideas.

A CZECH COUPLE WAS TIRED of the busy city of Prague and wanted to find somewhere more peaceful and relaxing to live. They had already fallen in love with the idea of living in an ecological, healthy and modern log home and after some searching they found a piece of land in the countryside for their house. The equation was complete.

The house is placed in the centre of the plot and it half-embraces the water, so this natural pond has become part of the house. The log house is T-shaped, with three wings of various functions and qualities. The main entrance is at the intersection of the three wings. The first wing consists of service spaces and rooms, garages and storage; the second wing consists of bedrooms, dressing rooms, a bathroom and a laundry room; and the third comprises the kitchen, dining room, living room and study.

The owners were present at the building site every day, following closely as the experts put together the house of their dreams, and after eight months the house was ready to be moved into and they could start making it their home.



CUSTOM LOG HOMES



"We envisaged the idea of a house in the middle of woods, in the centre of a forest town."



"The project is about maintaining the stillness and quietness of the forest."

"The project is also about providing a sense of privacy and security for the residents, while bringing light and air under the tree crowns."

RR Residence

Type of building Residential house

Architecture Monom

Project Leaders Jan Bradáč, Michal Bernart, Igor Hobza, Team: Zuzana Macková, Jiří Ptáček, Juraj Biroš, Lena Ilová

Number of floors 1

Living space 315 m²

Type of log Non-settling Honka Fusion FXL 204

Year of construction 2016

Location Kersko, Czech Republic

Photos Tuomas Harjumaaskola, Monom

CUSTOM LOG HOMES



Honka Log Homes 15

A photograph of a modern interior with wood-paneled walls. The walls are made of horizontal wooden planks and vertical wooden posts. A window in the center shows a view of green trees. In the foreground, there is a bright yellow, rounded chair. To the right, there is a blue armchair with a striped cushion. A small table with a glass top is visible near the window. The overall atmosphere is warm and contemporary.

A STORY OF



A FAMILY

Frank and Zeng Zeng thought log was a good choice because of its liveliness.



CUSTOM LOG HOMES

Log dream

A peaceful log house in Hangzhou





A couple from China ordered a Honka log house from Finland.

FRANK AND HIS WIFE ZENG ZENG'S beautiful log house stands out next to the surrounding brick houses. As soon as you enter the house, you can smell the faint scent of wood. The couple is working in architecture and can do their work remotely at home via the internet.

"Having seen European and American films, all living in rural areas in idyllic wooden houses, made me dream of such a lifestyle here in China as well," Frank says.

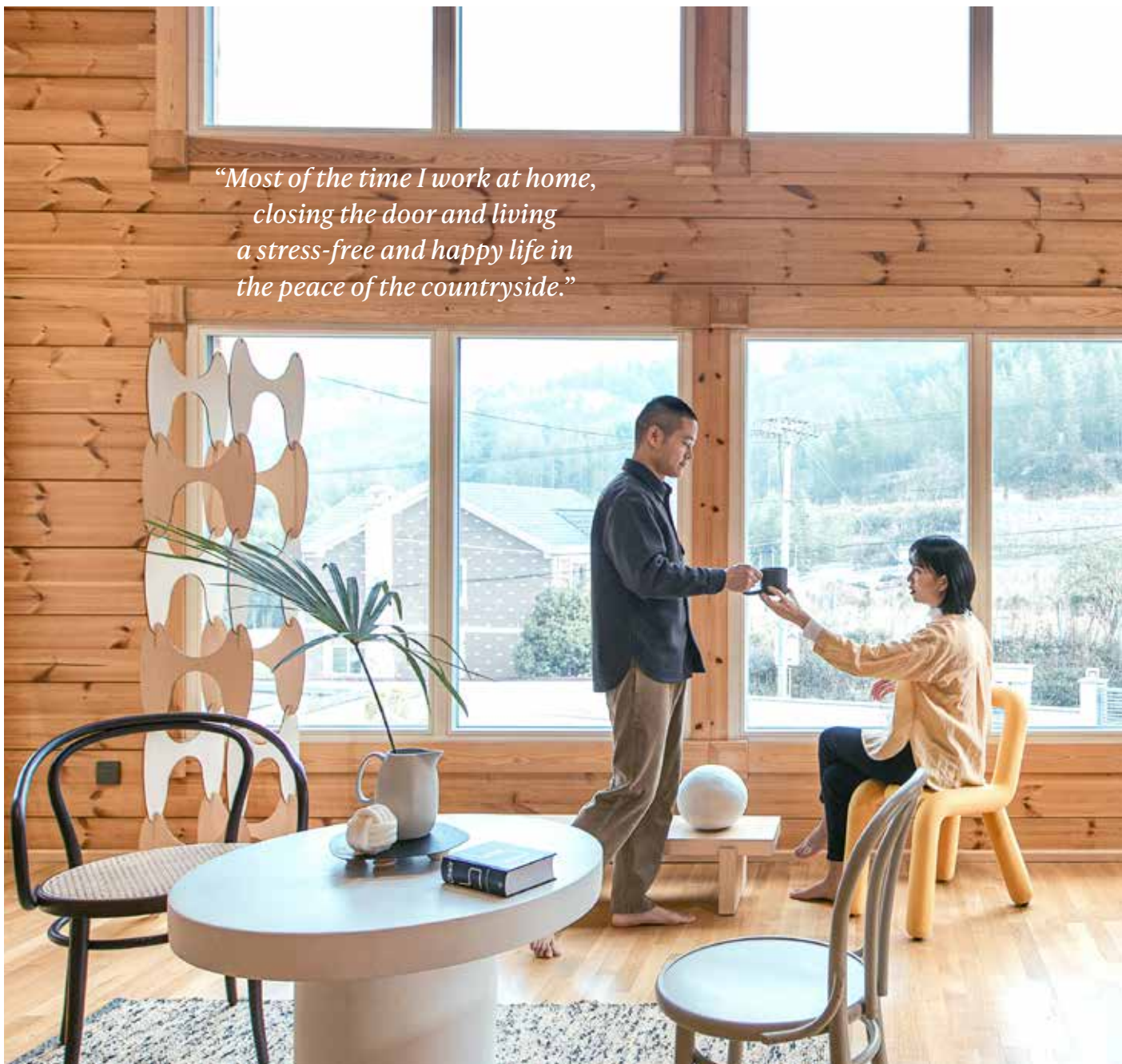
Frank learned that the Finnish red pine growing in the Arctic Circle grows slowly and therefore the tree is harder. He has researched and studied the design and construction of Finnish wooden houses.

“In Finland, the weather conditions can be extreme, so a lot of time is spent indoors and this is also taken into account when designing the living spaces. In the floor plan of our log house, the bedroom is smaller and the living space is more open.”



CUSTOM LOG HOMES

*“Most of the time I work at home,
closing the door and living
a stress-free and happy life in
the peace of the countryside.”*





Frank feels that by building the house himself he could implement it according to his own wishes.



The second floor has a large French balcony with sweeping views of the mountain landscape.



Honka Log House in Hangzhou, China

Type of building Residential house

Architecture The house model is Honka Metso 120, the ground floor build with brick and interior design was made by Zeng Yuting

Type of log Honka MLL 182

Number of floors 3

Living space 250 m²

Year of construction 2018-2019

Location Hangzhou, China

CUSTOM LOG HOMES



A dark Audi TT is parked on a balcony or terrace. The car is viewed from the rear three-quarter angle. The license plate is R4 MNR. The background features a dramatic sunset sky with large, dark clouds and a bright horizon. To the right, a modern building with vertical wooden slats is visible. The overall mood is serene and sophisticated.

A STORY OF



A FAMILY

Inside, the logs are visible,
but from outside the house is
unrecognisable as a log home.



CUSTOM LOG HOMES

Honka *Fusion*

Zero corner house
in England





Hannu and Sally built a log house in the seaside town of Minehead, England, using Honka Fusion technology.

BUILT BY HANNU AND SALLY in the seaside town of Minehead, England, the house is exceptional in many ways. Firstly, it looks modern compared to other houses. Secondly, it is made of logs. In England, log houses are mainly considered holiday homes. The couple's house is the first primary-residence log home in the area, and it features the Honka Fusion Zero Corner technology.

"There is an ingrained assumption when we see a log house that it is a temporary building or a holiday home. By using Fusion technology inside the house to deliver all the eco credentials, whereas the exterior can be fashioned according to personal taste in design and appearance by using various materials, made of any material, in our case, wood panel."

”The huge advantage of this technology is that the super-structure of the house can be erected so quickly.” Humidity is a big problem in English houses. Hannu believes that Honka’s log houses could be the solution to this. He is surprised at how living in a log house has turned out to be more comfortable than he expected. The benefits of a log house also include significantly lower heating costs.



CUSTOM LOG HOMES



"Here, you immediately notice that you are sleeping better. And the walls are so sturdy that you can't hear sounds from outside."



Construction began in June 2019 and Honka came onsite in September, after the groundworks and foundations had been completed. The house was almost ready for moving in at the end of January 2020.



The couple believes there could be demand for Honka's new technology in England.



Honka Fusion in England

Type of building Residential house

Architecture Bespoke, Contemporary, Architect Design

Type of log FXL 134N Non-settling Zero corner cross laminated log

Number of floors 2

Living space 185 m² plus 25 m² covered storage

Year of construction 2019-2020

Location Minehead, England

CUSTOM LOG HOMES



It's more than a house. It's a healthy home.

A genuine Honka log house is a *warm, inviting and healthy place to live*. It's an ecological home that quite literally takes good care of the people who live within its walls.

INFO AND SERVICES



Wood has been loved by people through the ages. Using cutting-edge production technology, Honka processes the wood into the best possible construction material. Despite the high degree of

processing, the dense and healthy log in the wall is still the same pine tree that has endured snow, rain and sun in a Nordic forest.

Natural materials

The main material of Honka houses is durable, certified and renewable pine from Finnish saw mills. The feeling you get when you walk through the doors

of a log house is unique – warm, cosy and welcoming. Natural.

High indoor air quality

According to an extensive European study, the more massive wood there is inside a house, the healthier the air quality becomes. Massive wood has the unique ability to absorb moisture and release it back into the air as the room dries. This helps to keep

the indoor humidity at an optimal level, where the air is easy to breathe and the growth of mould and bacteria is minimised. Log buildings promote good health naturally, thanks to their superior air quality.

De-stress living

It has been scientifically proven that solid wood structures lower heart rate and reduce stress like walking in the woods. Solid wood also has excellent

acoustic properties, absorbing sounds and creating a calming and cosy atmosphere.

Did you know that massive wood is a surprisingly fireproof material that can endure fire even better than concrete or steel pillars? Wood contains about 15 % of water. Therefore, before wood can catch fire, all water has to evaporate. In a fire, a massive wood house will char, but it will not collapse in the same way as light- or steel-structured houses.



Honka Fusion™ and the freedom of design

As a *natural material*, wood changes over the course of time. Our *innovation*, the non-settling Honka Fusion™ log, allows all the excellent properties of a traditional log house to be incorporated into modern urban living.

Counting out the limitations of settling, more versatile architecture can be achieved. For example, log walls can include a large surface area of window, with modern, light mouldings, free of the wide architraves and settling spaces of traditional log construction.

Logs can easily be combined with other materials too, like stone, plastering and steel. Also, the traditional cross corners can be substituted with regular outer corners. Your family will still benefit from the best qualities of a log house, such as longevity and healthy indoor air.



The Honka Fusion™ solution is based on blocking the effects of settling using vertical middle layers of laminated logs.



Large windows can be included in log walls with modern, light mouldings.



The walls of a zero-corner house appear to be panelled due to the even layering and regular outer corner.

Modern log technology provides excellent opportunities for creating architecture in the Scandinavian style. The minimalistic designs can be utilised in urban and natural environments alike. Besides visual advantages, log buildings provide an unrivalled natural atmosphere of well-being – which is at the core of Scandinavian design.



Safe dreams with certified structures

The life span of massive wood houses is very long. A wooden building may last for *hundreds of years* when it has been designed and built correctly to protect it from humidity and extreme weather conditions. Honka has unrivalled expertise based on years of research and testing and supplying *over 85,000 log buildings* worldwide.

Because Nordic pine grows slowly, its wood is exceptionally hard, particularly the heartwood. Pine can withstand changes in humidity without cracking, which makes it the best possible building material for log houses. All of the wood used in the production of Honka houses has to pass our strict quality control standards. Only the very best wood sourced from lush, healthy, well-cared-for forests will do.

The quality of everything Honka does is based on generations of knowhow, ongoing development and independent testing. The results are indisputable. We're proud to say that we make some of the most air-tight, water-tight, fire and earth-quake resistant homes on the market.

The better the air-tightness of the house, the more energy efficient it is. Our precision-machined timber with built-in seals yields very tight fitting joints, and hence air-tight walls. With improved air-tightness, you can enjoy lower energy bills.

Water-tightness also plays an important role by keeping wall structures safe from water damage. Honka houses are insulated at the factory with double sealing tape. This keeps them well insulated, decreases the possibility of on-site sealing errors and helps accelerate construction. Various country-specific requirements, for example those related to loading and heat insulation, are also taken into consideration.

Honka is the first log house manufacturer in the world to gain the right to use the CE certification mark in accordance with ETA (European Technical Approval). The CE mark indicates that a product meets the requirements of the EU's building product directive. The CE mark means Honka house kits can be freely transported to 31 European countries. Honka also has the ISO 9001 quality certificate.

Upon completion, each and every Honka house is fitted with an Original Honka plaque. This little plaque guarantees the quality and authenticity of your Honka home.





“We find it important to provide our small children with the safest and healthiest environment we can as they grow up.”

LINDA, THE CUSTOMER

Honka Building Service

The Honka Building Service offered by our local authorized partners provides a range of services *designed to help you* along every step of the building process – from erecting the frame right down to putting the finishing touches on your home's exterior.

INFO AND SERVICES



Fast and controlled construction

With our precision-cut logs, detailed instructions and trained partners worldwide, an average-sized Honka log home can be weather-tight in just a few weeks. This means that the later building phases

inside the house can be started on time. Therefore, the overall building process of a log home is short compared to many other building solutions.

The main steps of building a log home

1. Foundation

Honka provides drawings and guidance for building the foundation base of your log home in accordance with the local building regulations. The foundation base is not normally included in the log house package delivery.

2. Frame

The frame of a log house acts as a solid frame structure and a wall structure at the same time. The frame is built by mounting each log layer after another at your site.

3. Roof trusses and roofing

When the frame of the house is in place, the wooden roof trusses will be lifted and attached to top of the house frame. The roof will be finished with the chosen roofing material – e.g., stone, steel or felt covering – and rain gutters.

4. Windows and doors

Assembling the windows and doors will complete the structural weather protection of your house.

5. Painting and other exterior details

The log walls will be painted or protected with wood preservative. Other exterior fittings such as stairs and terraces will also be mounted in this phase.

6. Interior structures and fittings

Partition walls, stairs and other interior fittings are assembled in this phase. The spaces requiring water insulation will be completed. All the necessary HVAC installations take place before the finalisation of the floor, wall and ceiling surfaces.

7. Quality check

When all the installation work has been concluded, the house structures will be checked for compliance with local building regulations.

One benefit of a log house is that you can build it any time of the year, even in the middle of winter. Contact your local Honka representative honka.com/sales so we can start planning your dream log home.



Honka logs — the heart of your home

Honka houses are built from *renewable, certified pine or spruce* from Finnish saw mills. The wood is exceptionally coniferous. Our timbers are selected from solid core wood which yields exceptional load bearing capacity with little to no cracking. *The perfect choice* for solid wood structures.

INFO AND SERVICES



Square logs are suited for a variety designs, both traditional and contemporary. The non-settling Honka Fusion™ log is your choice for urban,

minimalistic designs. Round logs are perfect for rustic log cabins and exotic resorts.

Choice of logs

Logs are chosen based on the purpose of the building and personal preference. The chosen log also affects the overall architecture of a Honka house.



Massive and insulated walls

Major parts of our houses are built from sufficiently thick log so that they do not require any extra insulation even in the coldest climates such as the northern parts of Finland. We also offer low-energy walls with additional insulation.

Corner options

Cross corners are characteristic to log houses, but many people feel they are a feature of rural landscapes. Our clearly defined, minimalistic Honka

Zero Corner™ concept produces log houses that are at ease even in the most urban environments.



*Cross corner,
cross-lap joint*



*Short corner, caged,
cross-lap joint*



*Patented Honka Zero Corner™,
miter joint*



WOOD *living*

We are here
to help you

Honkarakenne is a Finnish company with distributors and regional offices in more than thirty countries. Our authorised Honka representatives all around the world will help you to realise your dream.

Contact your local sales representative:

www.honka.com/sales



from
FINLAND



Wood living.

#honkafamily

#honkarakenne

www.honka.com

[f facebook.com/honkarakenne](https://facebook.com/honkarakenne)

[in Honkarakenne](https://in.linkedin.com/company/honkarakenne)

[You Tube youtube.com/user/Honkarakenne](https://www.youtube.com/user/Honkarakenne)

[@honkarakenne](https://www.instagram.com/honkarakenne)

[p pinterest.com/honkarakenne](https://pinterest.com/honkarakenne)

