

SALES BLITZ

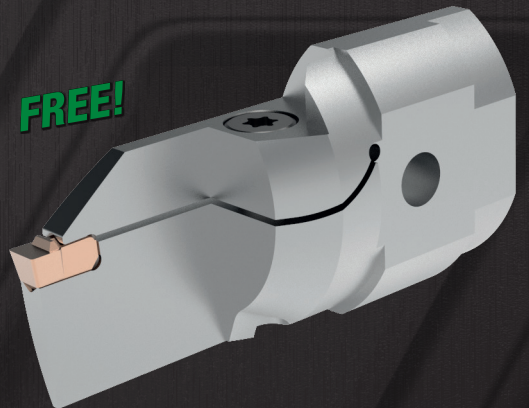
Turning Tools:

Cut-Off using WGC Separator™,
Face Grooving Using WGC Ranger™

**BUY 30 INSERTS GET A
WGC RANGER BLADE FOR FREE!**

OR

**BUY 30 INSERTS, GET A
WGC SEPARATOR BLADE AND
CLAMP FREE!**



Upgrade existing Ranger and Separator tools just by replacing the blades and using the new WGC inserts

Offer valid November 9 – December 31, 2020. Offer void where prohibited by law.
ALL SALES ARE FINAL

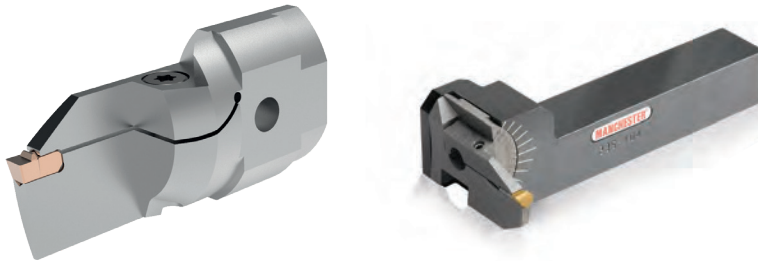
Please use "BLITZ" on your P.O.
All P.O.'s must be called or emailed to receive this promo

WIDIA 



New WGC — available to swap out Ranger adjustable face grooving system!

New WGC Ranger™ blades to fit into existing Ranger holders.



WGCRM-A Curve-In Style: Adjustable Face Grooving Blade

Order Number	Catalog Number	SSC (Seat Size)	W	CD	D min	D max	FS	L
6740385	WGCMRAR0319A317	3	0.125	0.75	2.25	16	-0.064	2.3
6740386	WGCMRAR0425A476	4	0.1875	1	2.25	16	-0.0954	2.55
6740387	WGCMRAR0625A635	6	0.25	1	2.25	16	-0.127	2.55
6740382	WGCMRAL0319A317	3	0.125	0.75	2.25	16	-0.064	2.3
6740383	WGCMRAL0425A476	4	0.1875	1	2.25	16	-0.0954	2.55
6740384	WGCMRAL0625A635	6	0.25	1	2.25	16	-0.127	2.55

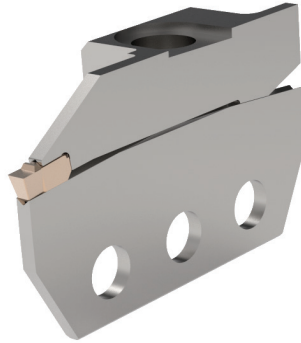
WGCRM-B Curve-Out Style: Adjustable Face Grooving Blade

Order Number	Catalog Number	SSC (Seat Size)	W	CD	D min	D max	FS	L
6740411	WGCMRAR0319B317	3	0.125	0.75	2.25	16	-0.061	2.3
6740412	WGCMRAR0425B476	4	0.1875	1	2.25	16	-0.0921	2.55
6740413	WGCMRAR0625B635	6	0.25	1	2.25	16	-0.1232	2.55
6740388	WGCMRAL0319B317	3	0.125	0.75	2.25	16	-0.061	2.3
6740389	WGCMRAL0425B476	4	0.1875	1	2.25	16	-0.0921	2.55
6740390	WGCMRAL0625B635	6	0.25	1	2.25	16	-0.1233	2.55



New WGC Separator™ blades to swap out existing universal blades.

New WGC Separator™ blades to fit into existing Separator holders.



Ø56(2 1/4") BAR CAPACITY-WGC SEPARATOR Blade For Separator Universal Style Holder

Seat size (SSC)	Type	Catalog No.	WGC mm #	Old Separator Catalog No.	Old Separator MM#
2	BLADE	WGCSUN0228B	6788448	310.109	3539441
	RH CLAMP	WGCSUR0228K	6788445	435.148	3539859
	LH CLAMP	WGCSUL0228K	6788442	435.149	3539860
3	BLADE	WGCSUN0328B	6788449	310.102	3539439
	RH CLAMP	WGCSUR0328K	6788446	435.101	3539825
	LH CLAMP	WGCSUL0328K	6788443	435.104	3539828
4	BLADE	WGCSUN0428B	6788450	310.108	3539440
	RH CLAMP	WGCSUR0428K	6788447	435.102	No MM#
	LH CLAMP	WGCSUL0428K	6788444	435.105	3539829

Ø76(3") BAR CAPACITY -WGC SEPARATOR Blade For Separator Universal Style Holder

Seat size (SSC)	Type	Catalog No.	WGC mm#	Old Separator Catalog No.	Old Separator MM#
3	BLADE	WGCSUN0338B	6788453	309.111	3539432
	RH CLAMP	WGCSUR0338K	6788455	435.136	3539849
	LH CLAMP	WGCSUL0338K	6788451	435.137	No MM#
4	BLADE	WGCSUN0438B	6788454	309.105	3539428
	RH CLAMP	WGCSUR0438K	6788456	435.103	3539827
	LH CLAMP	WGCSUL0438K	6788452	435.106	3539830