



AGRI SOIL

Precision PH and Nutrient report

Farm business name

Farm XXX

May 2024



Method Statement

This report was prepared by Agri Soil in May 2024

Farm XXX was sampled by Agri Soil on ** April 2024. Samples were taken at a depth of 15cm using a probe sample.

Twelve cores were taken in a circular pattern from a pre-determine point to form one sample per hectare. This ensures the soil sample is representative of the block.

The samples were analysed by NRM (an UKAS accredited laboratory) on ** April 2024.

Total area sampled
112ha

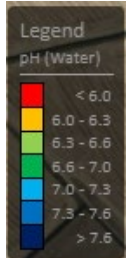
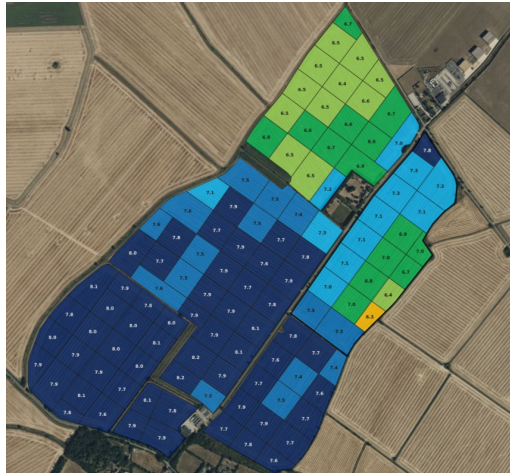
Sampling density
1 per hectare

Date sampled
** April 2024

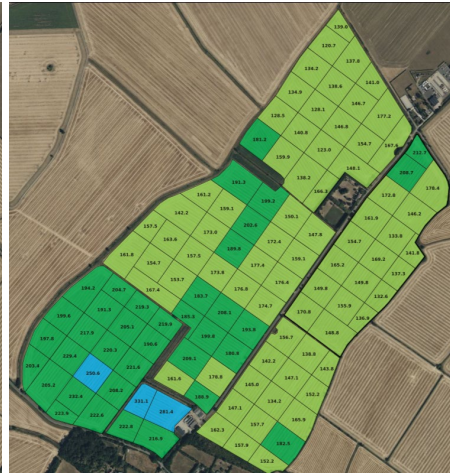
Analysing Lab
NRM

Basic nutrient summary - Church Farm

Ph



K



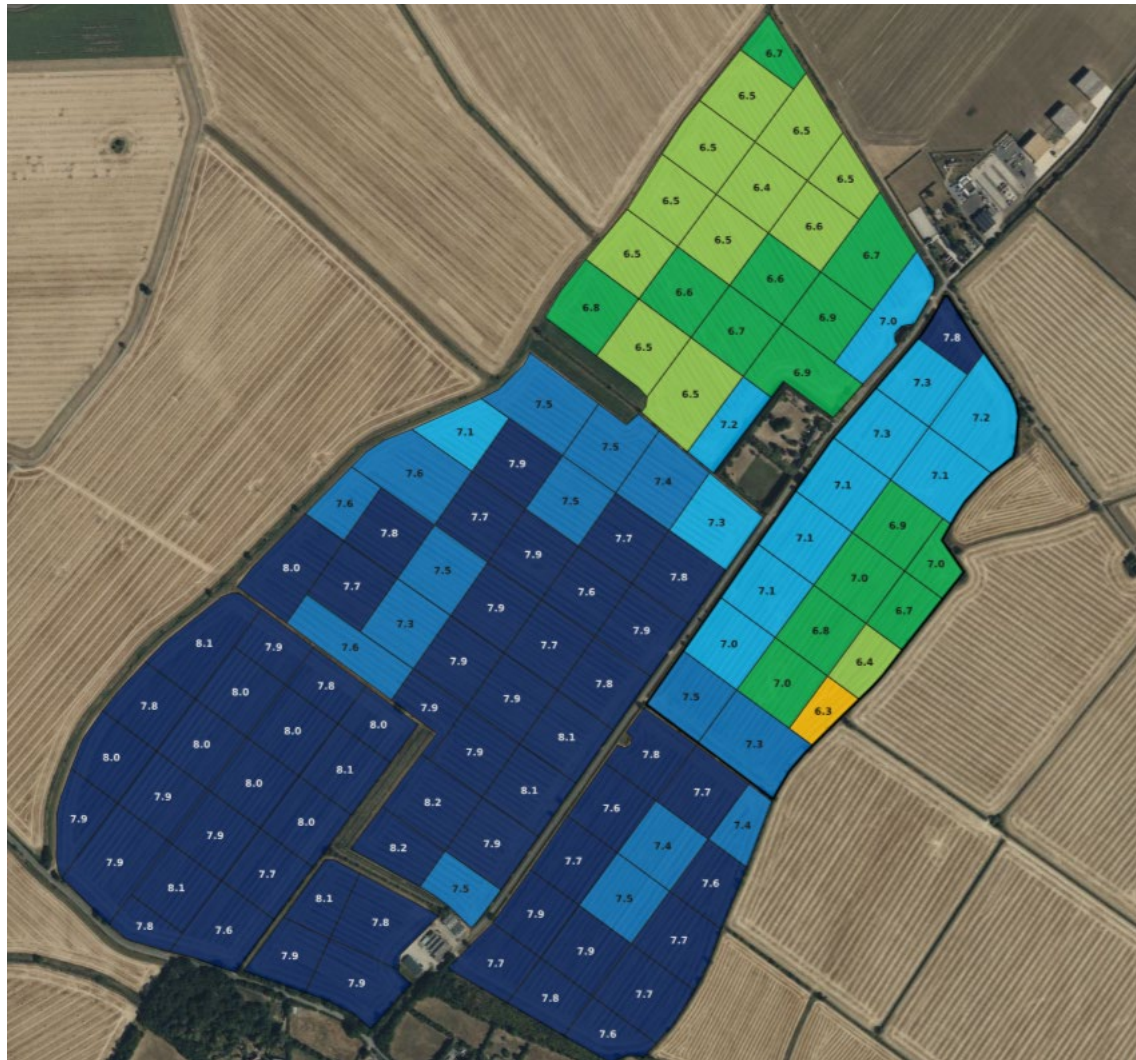
Mg



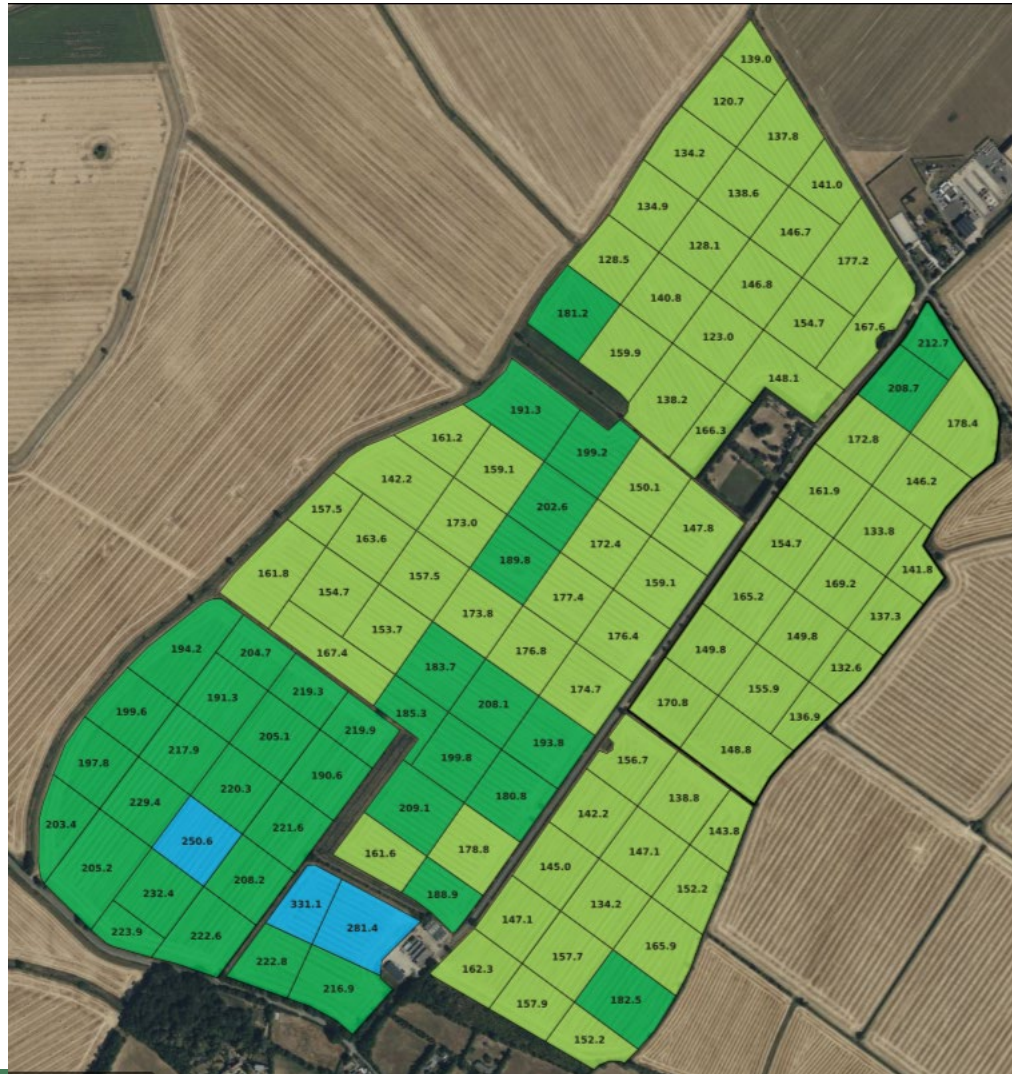
P



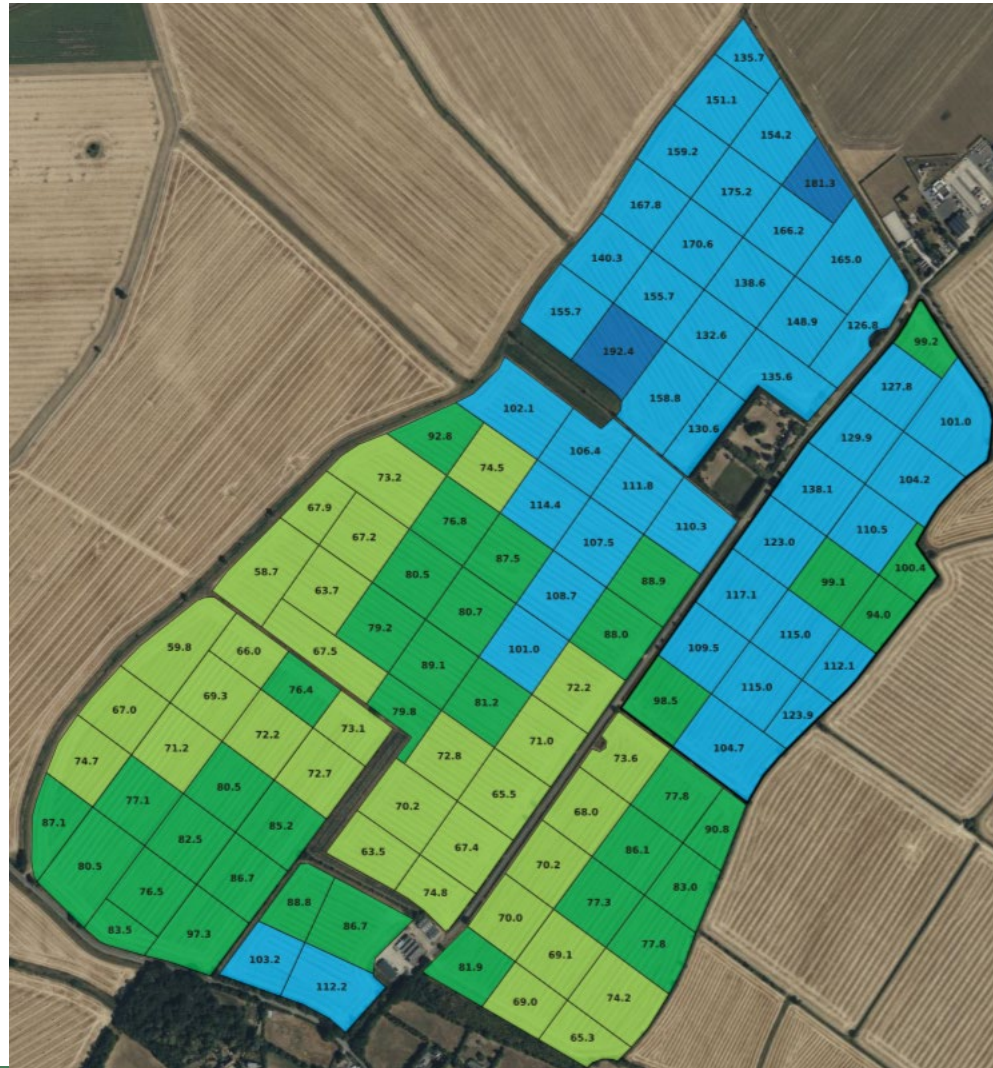
Ph Overview – Church Farm



Potassium Overview – Church Farm



Magnesium Overview – Church Farm



Phosphorus Overview – Church Farm



pH results

Field	Samples	Avg pH	Min pH	Max pH	Lime Req. (t)
46 Acre	19	7.0	6.3	7.8	4.3
90 Acre	34	7.7	7.1	8.2	0.0
Churchfield	20	7.9	7.6	8.1	0.0
Collets	21	6.6	6.4	7.2	25.0
Ex Grass	4	7.9	7.9	8.1	0.0
Village field	15	7.7	7.4	7.9	0.0
Summary	Total	Avg pH	Min pH	Max pH	Total
	113	7.5	6.3	8.2	29.2

Observations

Average pH of 7.5 with a range from 6.3 to 8.2.

At a target pH of 6.7 you will require 29 tonnes of Ground limestone.

Lime Requirement as target pH changes

Field	6.2	6.3	6.4	6.5	6.6	6.7	6.8	6.9	7.0	7.1	7.2
46 Acre	0.0	0.2	0.7	1.9	3.1	4.3	5.9	8.3	12.8	20.5	31.9
90 Acre	0.0	0.0	0.0	0.0	0.0	0.0	0.0	0.0	0.0	0.1	0.9
Churchfield	0.0	0.0	0.0	0.0	0.0	0.0	0.0	0.0	0.0	0.0	0.0
Collets	0.0	0.0	0.1	2.3	11.7	25.0	41.1	59.0	78.6	99.0	119.8
Ex Grass	0.0	0.0	0.0	0.0	0.0	0.0	0.0	0.0	0.0	0.0	0.0
Village field	0.0	0.0	0.0	0.0	0.0	0.0	0.0	0.0	0.0	0.0	0.0
	6.2	6.3	6.4	6.5	6.6	6.7	6.8	6.9	7.0	7.1	7.2
Total Lime	0.0	0.2	0.8	4.2	14.8	29.2	46.9	67.4	91.4	119.6	152.7

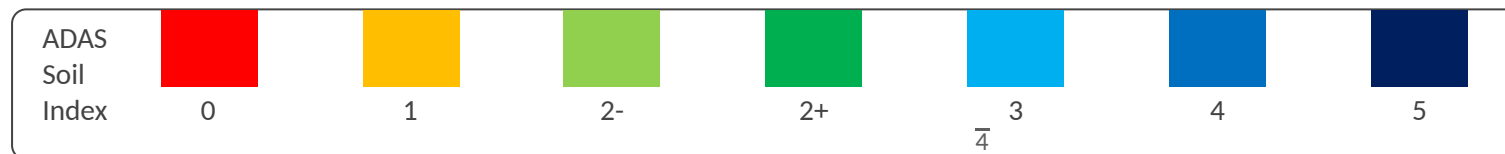
Routine results

Field	pH	Phosphate ppm	Potassium ppm	Magnesium ppm
46 Acre	7.1	36.4	165.2	117
46 Acre	7.1	32.4	146.3	104
46 Acre	6.8	32.0	149.9	115
46 Acre	6.9	36.0	133.8	110
46 Acre	7.8	25.2	212.7	99
46 Acre	7.1	34.6	162.0	138
46 Acre	7.1	34.0	154.7	123
46 Acre	6.4	37.4	132.6	112
46 Acre	7.2	33.6	178.5	101
46 Acre	6.7	36.0	137.4	94
46 Acre	6.3	32.2	137.0	124
46 Acre	7.3	35.4	148.9	105
46 Acre	7.0	33.0	169.2	99
46 Acre	7.3	36.6	172.8	130
46 Acre	7.0	33.6	155.9	115
46 Acre	7.5	38.8	170.8	98
46 Acre	7.0	32.2	149.9	110
46 Acre	7.0	33.2	141.8	100
46 Acre	7.3	36.0	208.7	128
90 Acre	7.9	15.6	159.1	75
90 Acre	7.9	26.0	173.8	81
90 Acre	7.4	22.4	150.1	112
90 Acre	7.7	20.2	176.9	101
90 Acre	7.3	19.6	147.9	110



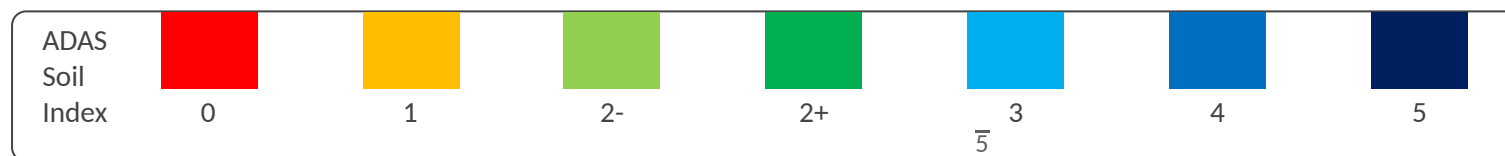
Routine results

Field	pH	Phosphate ppm	Potassium ppm	Magnesium ppm
90 Acre	7.9	25.4	183.7	89
90 Acre	7.7	15.6	173.0	77
90 Acre	7.7	17.8	154.7	64
90 Acre	7.6	17.8	199.2	106
90 Acre	7.3	18.4	153.7	79
90 Acre	7.9	18.8	176.5	88
90 Acre	7.6	20.6	142.2	73
90 Acre	7.6	18.0	177.5	109
90 Acre	7.8	15.6	159.1	89
90 Acre	7.9	20.0	208.1	81
90 Acre	8.2	24.8	209.1	70
90 Acre	7.6	26.8	157.5	68
90 Acre	8.1	22.4	193.8	71
90 Acre	8.0	17.2	161.8	59
90 Acre	7.6	18.6	167.4	67
90 Acre	7.5	23.4	189.0	75
90 Acre	7.5	19.8	191.4	102
90 Acre	8.2	18.8	161.6	63
90 Acre	7.8	23.4	174.7	72
90 Acre	7.9	16.6	178.9	67
90 Acre	7.9	21.0	185.3	80
90 Acre	8.1	18.4	180.9	66
90 Acre	7.8	18.6	163.6	67
90 Acre	7.5	17.2	202.6	114



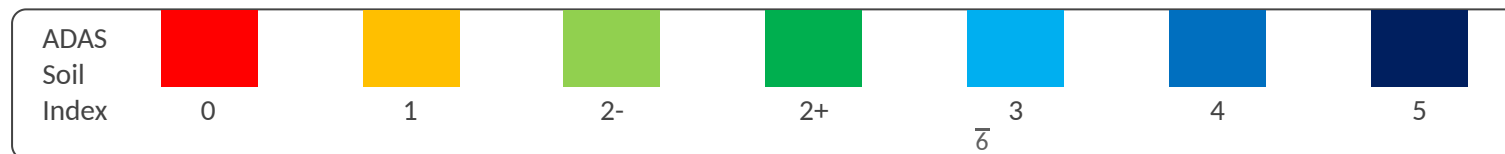
Routine results

Field	pH	Phosphate ppm	Potassium ppm	Magnesium ppm
90 Acre	7.9	22.8	199.8	73
90 Acre	7.9	23.8	189.8	87
90 Acre	7.5	23.6	157.5	80
90 Acre	7.1	18.0	161.2	93
90 Acre	7.7	21.4	172.4	108
Churchfield	8.0	19.8	205.1	72
Churchfield	7.6	33.6	222.6	97
Churchfield	7.8	27.4	224.0	84
Churchfield	8.0	26.6	191.4	69
Churchfield	7.9	27.6	229.4	77
Churchfield	8.0	25.0	197.8	75
Churchfield	7.8	20.0	219.4	76
Churchfield	7.9	20.6	250.6	83
Churchfield	8.0	24.8	218.0	71
Churchfield	8.1	18.8	194.2	60
Churchfield	7.9	24.4	205.3	80
Churchfield	8.1	22.6	232.5	76
Churchfield	7.8	26.0	199.6	67
Churchfield	8.0	21.6	220.4	81
Churchfield	7.9	30.6	203.5	87
Churchfield	8.0	21.2	220.0	73
Churchfield	7.7	30.2	208.3	87
Churchfield	7.9	19.0	204.7	66
Churchfield	8.1	20.8	190.6	73



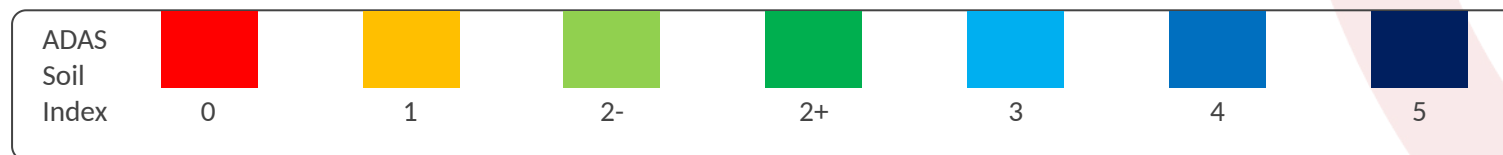
Routine results

Field	pH	Phosphate	Potassium	Magnesium
		ppm	ppm	ppm
Churchfield	8.0	24.6	221.6	85
Collets	6.7	34.0	123.1	133
Collets	6.6	51.8	141.0	181
Collets	6.5	53.2	137.8	154
Collets	6.4	36.6	138.6	175
Collets	6.5	42.2	120.7	151
Collets	6.9	27.0	148.1	136
Collets	6.6	46.0	146.9	139
Collets	6.9	39.0	154.7	149
Collets	7.0	38.0	167.6	127
Collets	7.2	35.0	166.4	131
Collets	6.6	40.6	140.8	156
Collets	6.5	47.2	135.0	168
Collets	6.7	60.2	177.3	165
Collets	6.5	44.2	159.9	192
Collets	6.6	44.8	146.7	166
Collets	6.7	50.4	139.0	136
Collets	6.5	34.4	128.1	171
Collets	6.8	40.6	181.3	156
Collets	6.5	35.0	134.2	159
Collets	6.5	39.8	138.2	159
Collets	6.5	39.4	128.5	140
Ex Grass	7.9	18.8	216.9	112
Ex Grass	7.9	19.4	281.4	87



Routine results

Field	pH	Phosphate ppm	Potassium ppm	Magnesium ppm
Ex Grass	8.1	27.2	331.2	89
Ex Grass	7.9	17.2	222.8	103
Village field	7.6	29.8	152.3	65
Village field	7.7	35.8	138.8	78
Village field	7.7	37.6	145.0	70
Village field	7.4	31.0	147.1	86
Village field	7.9	26.0	157.7	69
Village field	7.8	31.4	157.9	69
Village field	7.7	26.0	182.5	74
Village field	7.7	30.6	166.0	78
Village field	7.6	30.4	142.2	68
Village field	7.5	26.8	134.2	77
Village field	7.9	31.4	156.7	74
Village field	7.4	32.6	143.8	91
Village field	7.7	24.0	162.4	82
Village field	7.9	33.6	147.1	70
Village field	7.6	25.6	152.3	83



Routine results

Observations

Phosphate

Index 2, Index 3, Index 4 and Index 5

Potassium

Index 2, Index 3 and Index 4

Magnesium

Index 2, Index 3, Index 4 and Index 5



ADAS Soil Index

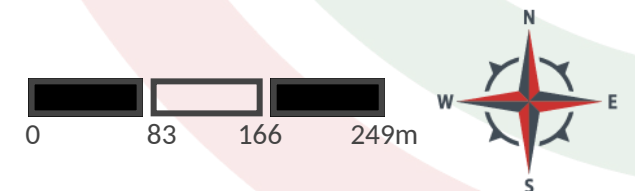
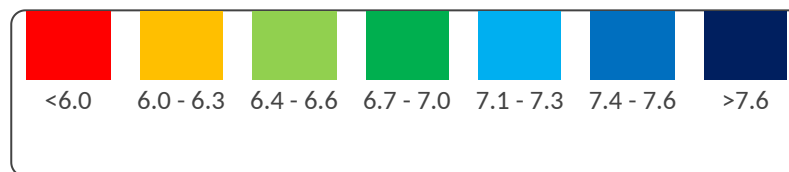
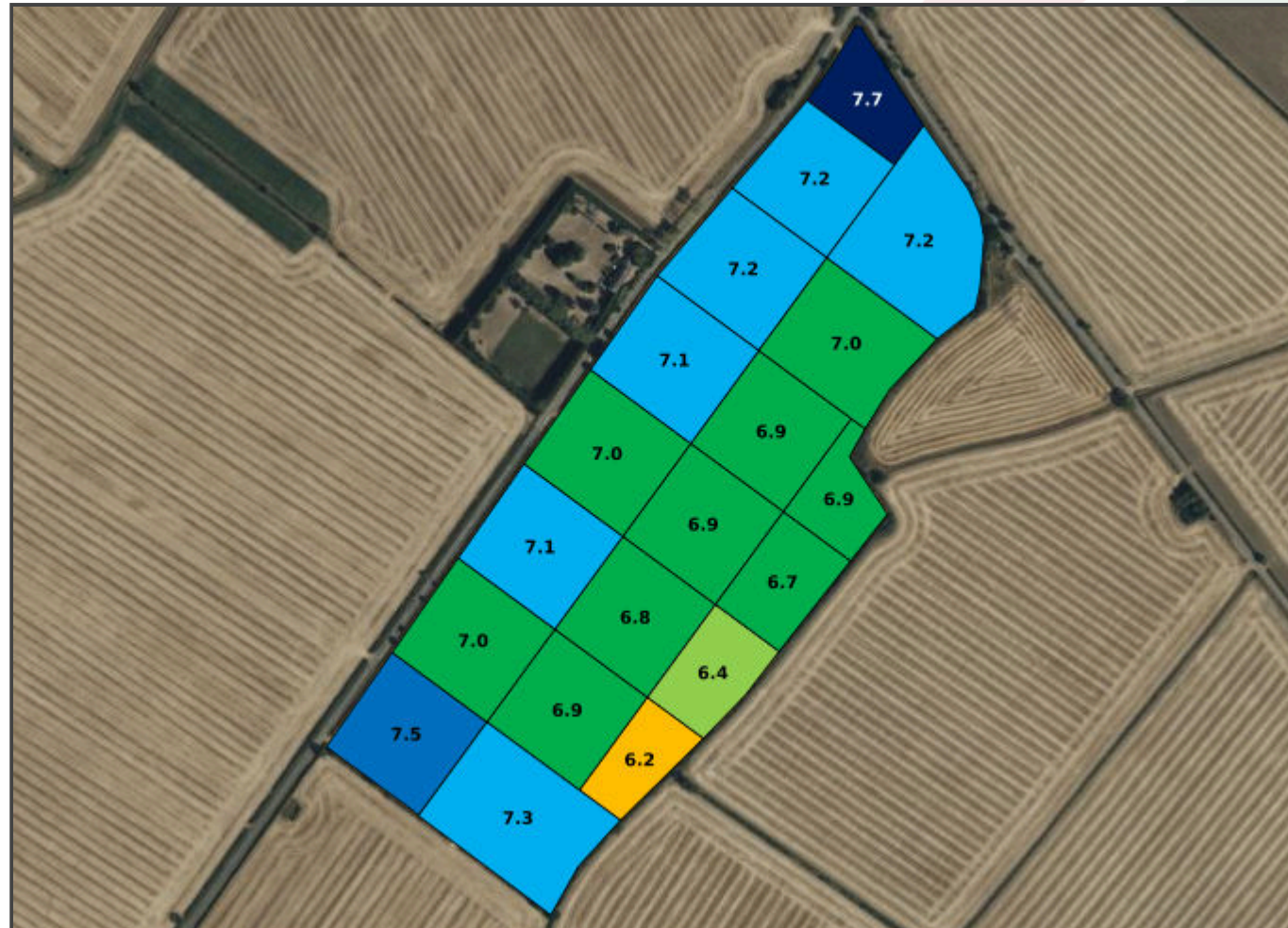
Scales of interpretation for soil extractable determination

ADAS Soil Index	0	1	2-	2+	3	4	5
ADAS Interpreta...	Very Low	Low	Medium Low	Medium High	High	Very High	Excessive
pH	<6.0	6.0-6.3	6.4-6.6	6.7-7.0	7.1-7.3	7.4-7.6	>7.6
Phosphorus	0-9	10-15	16-20	21-25	26-45	46-70	>70
Potassium	0-60	61-120	121-180	181-240	241-400	401-600	>600
Magnesium	0-25	26-50	51-75	76-100	101-175	176-250	>250
Sulphur	0-10	11-22	23-37	38-51	52-100	101-150	>150
Manganese	0.00-9.41	9.42-18.82	18.83-28.23	28.24-50.00	50.01-70.57	70.58-141.13	>141.13
Zinc	0.00-0.61	0.62-3.66	3.67-7.32	7.33-9.75	9.76-14.63	14.64-19.00	>19.00
Iron	0.00-9.47	9.48-18.94	18.95-30.30	30.31-100.00	100.01-189.38	189.39-568.14	>568.14
Boron	0.0-0.3	0.4-0.6	0.7-1.2	1.3-2.4	2.5-4.0	4.0-6.0	>6.0
Copper	0.0-1.8	1.9-3.0	3.1-4.5	4.6-10.0	10.1-15.0	15.0-20.0	>20.0
Calcium	0-800	801-1200	1201-2000	2001-2500	2501-3000	3001-4000	>4000
Sodium	0-10	11-24	25-40	41-120	121-200	201-800	>800
Molybdenum	0.00-0.01	0.02-0.04	0.05-0.08	0.09-0.12	0.13-0.20	0.21-0.40	>0.40

pH results

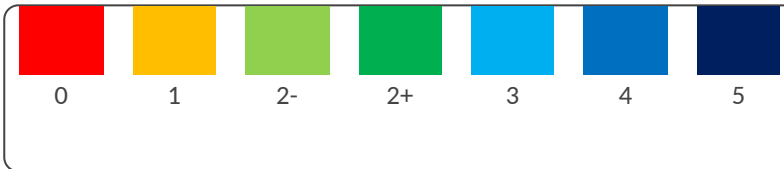
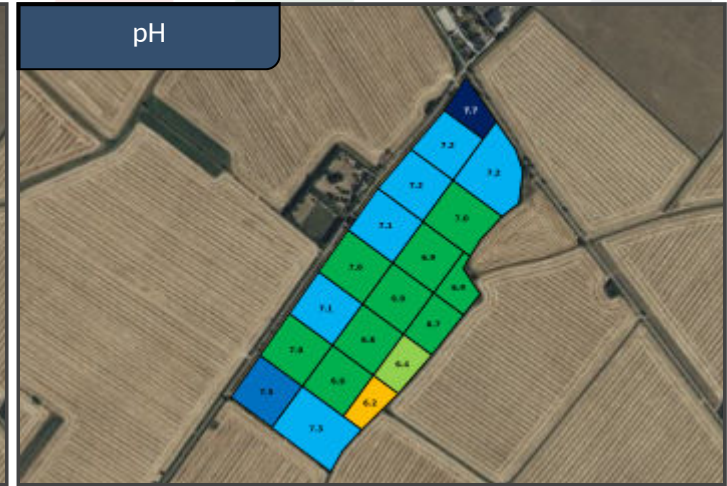
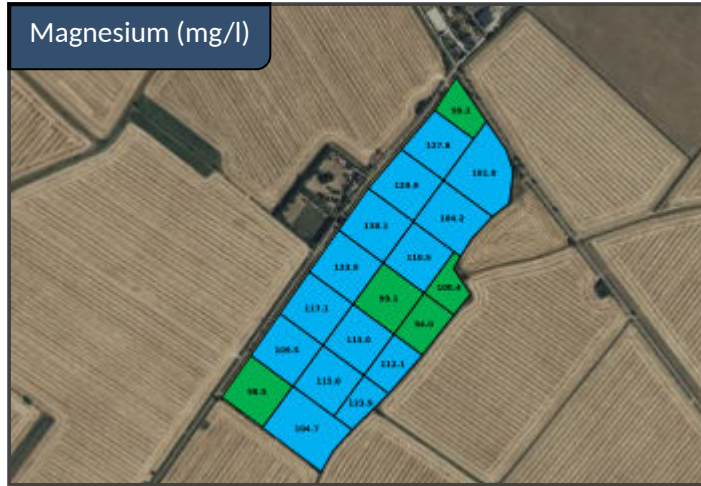
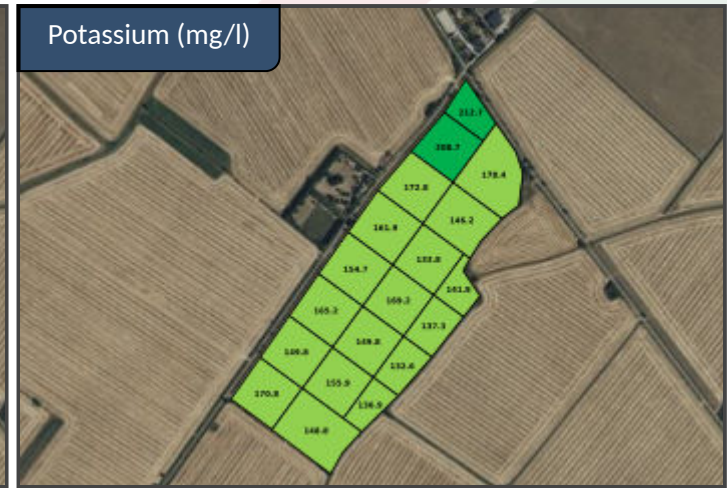
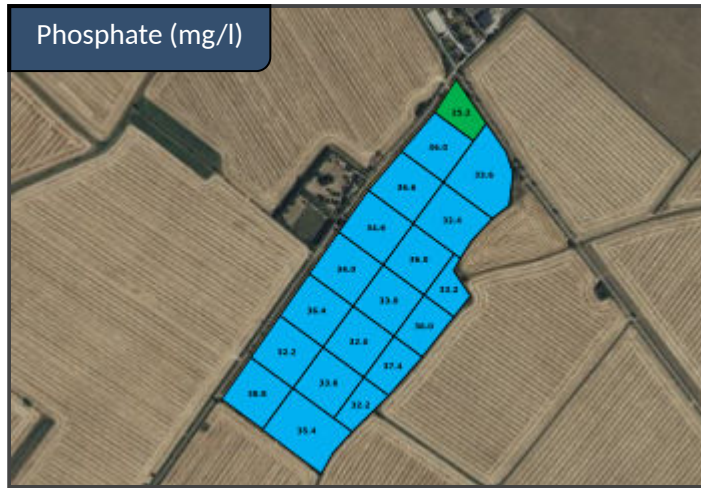
Field Name:	46 Acre
Target pH:	6.7
Lime Type:	Ground limestone
Sample Date:	29 Apr 2024

pH	Lime Req.	Area (ha)	Tonnes
6.3	4.4	0.52	2.3
6.4	3.0	0.66	2.0
6.7	0.0	0.71	0.0
6.8	0.0	1.00	0.0
6.9	0.0	1.00	0.0
7.0	0.0	1.52	0.0
7.0	0.0	1.00	0.0
7.0	0.0	1.03	0.0
7.1	0.0	1.14	0.0
7.1	0.0	1.07	0.0
7.1	0.0	1.05	0.0
7.1	0.0	1.09	0.0
7.2	0.0	1.43	0.0
7.3	0.0	2.04	0.0
7.3	0.0	1.43	0.0
7.5	0.0	1.02	0.0
7.8	0.0	0.58	0.0
Av pH	No. samples	Total	Total
7.0	19	18.31	4.3



Routine results

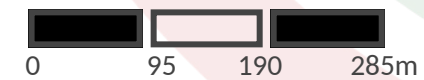
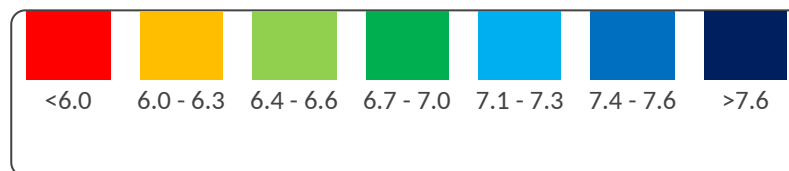
Field Name:	46 Acre
Sample Date:	29 Apr 2024



pH results

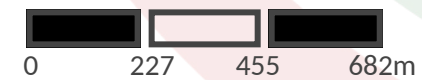
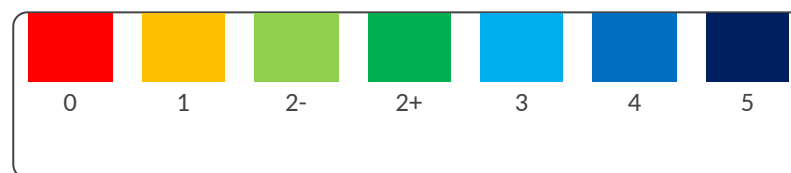
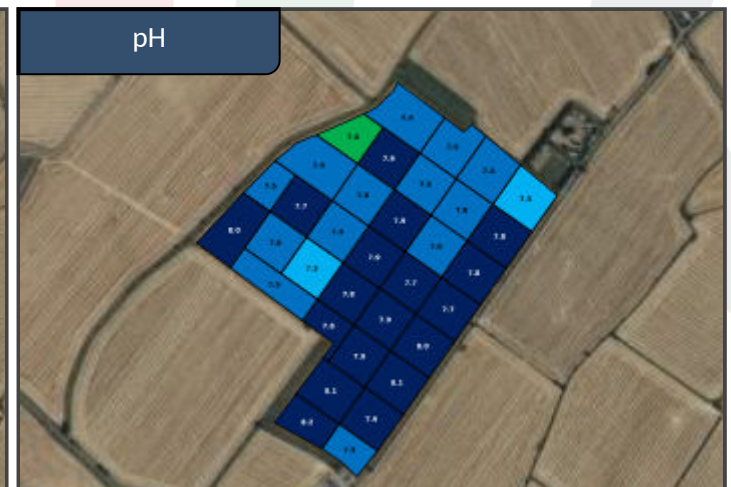
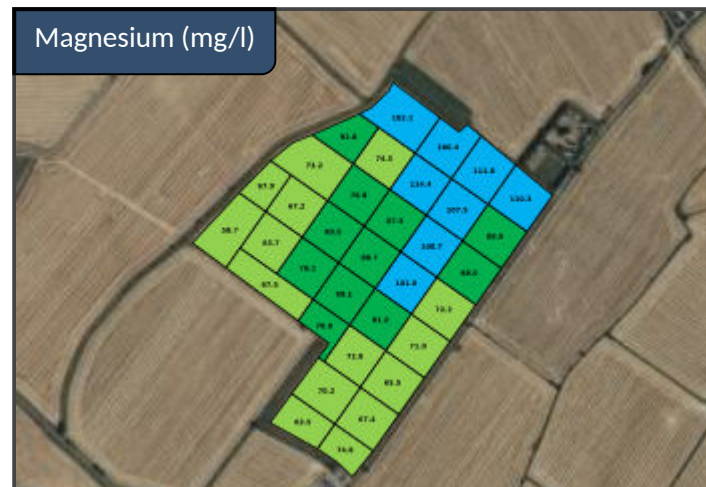
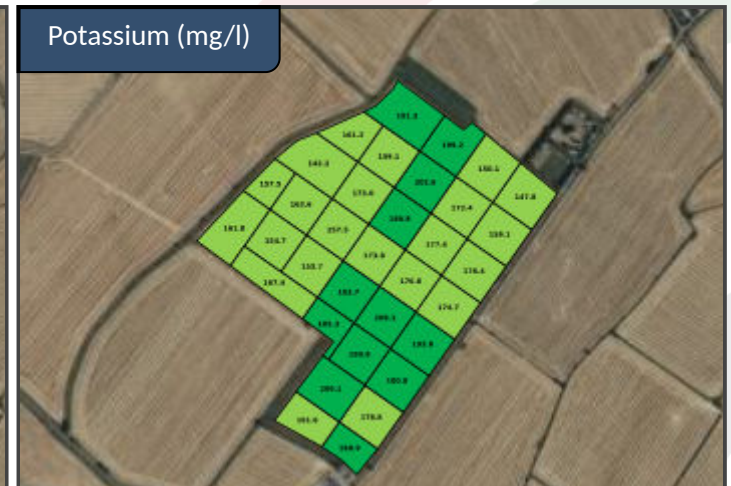
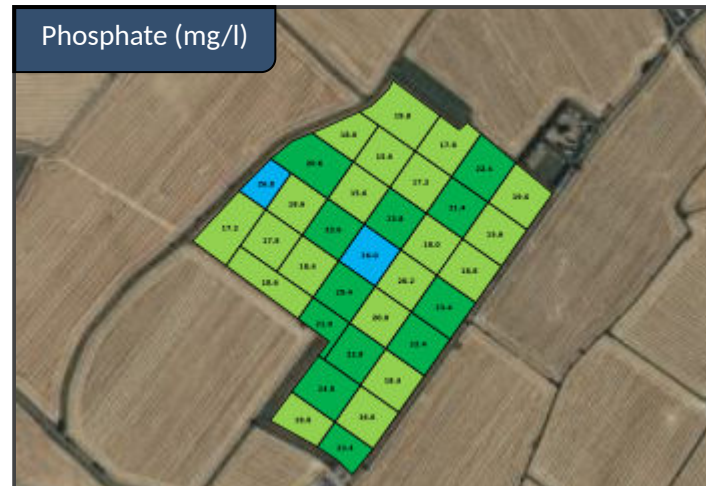
Field Name:	90 Acre
Target pH:	6.7
Lime Type:	Ground limestone
Sample Date:	29 Apr 2024

pH	Lime Req.	Area (ha)	Tonnes
7.1	0.0	0.83	0.0
7.3	0.0	1.11	0.0
7.3	0.0	1.00	0.0
7.4	0.0	1.12	0.0
7.5	0.0	1.00	0.0
7.5	0.0	1.35	0.0
7.5	0.0	1.72	0.0
7.6	0.0	1.06	0.0
7.6	0.0	1.12	0.0
7.6	0.0	2.04	0.0
7.6	0.0	1.00	0.0
7.7	0.0	1.00	0.0
7.7	0.0	2.00	0.0
7.7	0.0	1.00	0.0
7.8	0.0	2.06	0.0
7.8	0.0	1.07	0.0
7.9	0.0	1.72	0.0
7.9	0.0	1.00	0.0
7.9	0.0	2.05	0.0
7.9	0.0	1.00	0.0
7.9	0.0	2.00	0.0



Routine results

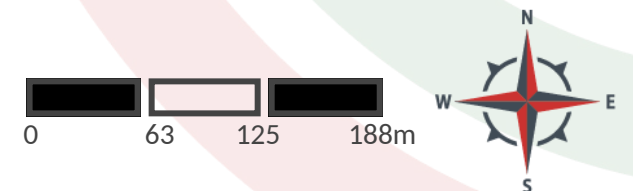
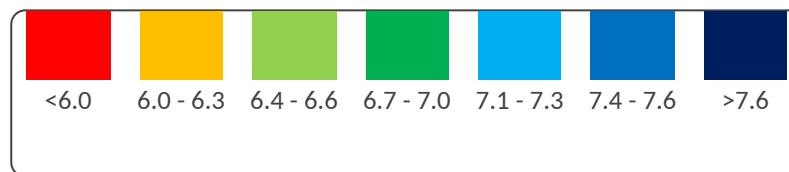
Field Name:	90 Acre
Sample Date:	29 Apr 2024



pH results

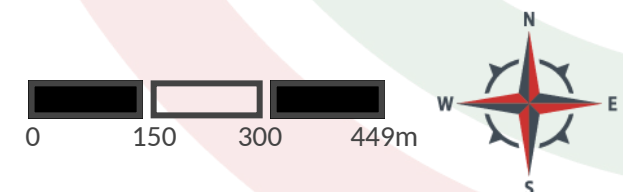
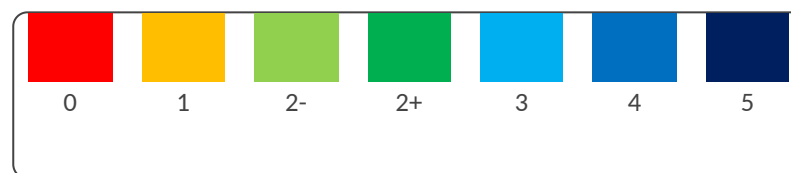
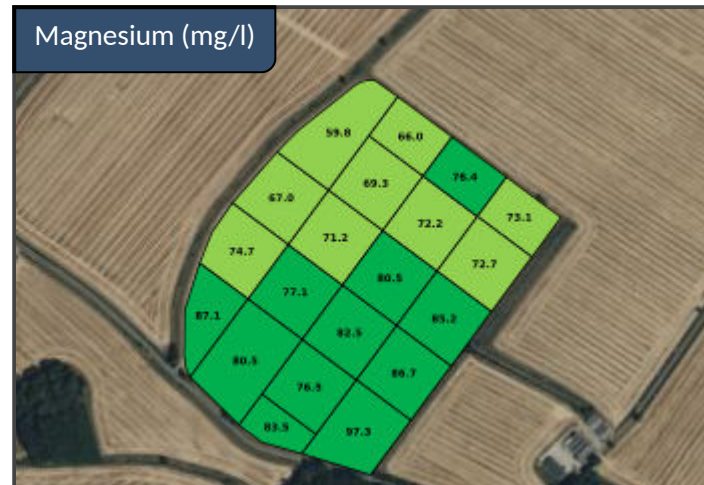
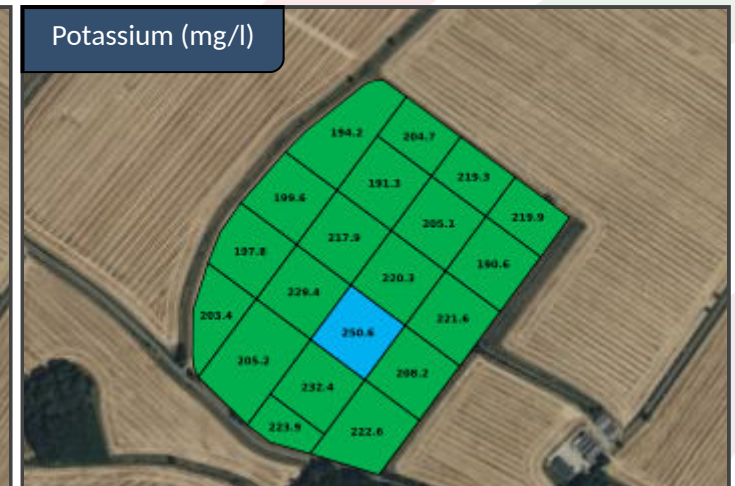
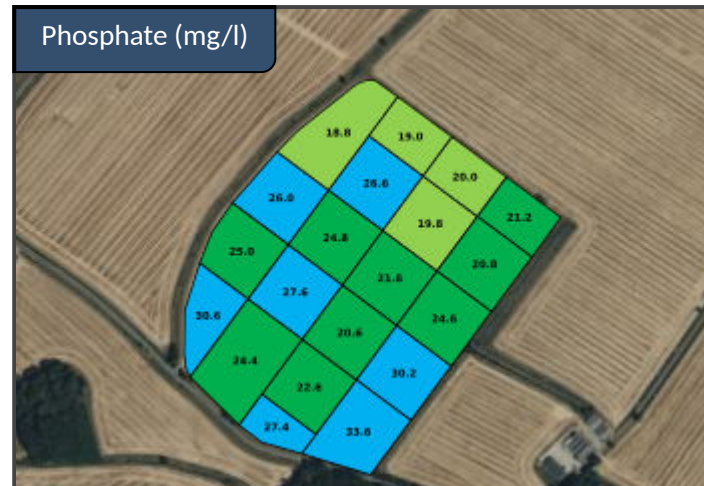
Field Name:	Churchfield
Target pH:	6.7
Lime Type:	Ground limestone
Sample Date:	29 Apr 2024

pH	Lime Req.	Area (ha)	Tonnes
7.6	0.0	1.17	0.0
7.7	0.0	1.00	0.0
7.8	0.0	1.00	0.0
7.8	0.0	0.52	0.0
7.8	0.0	0.72	0.0
7.9	0.0	1.72	0.0
7.9	0.0	1.00	0.0
7.9	0.0	0.82	0.0
7.9	0.0	1.50	0.0
8.0	0.0	1.00	0.0
8.0	0.0	1.73	0.0
8.0	0.0	1.00	0.0
8.0	0.0	1.00	0.0
8.0	0.0	1.99	0.0
8.1	0.0	1.00	0.0
8.1	0.0	1.00	0.0
8.1	0.0	1.31	0.0
Av pH	No. samples	Total	Total
7.9	20	19.47	0.0



Routine results

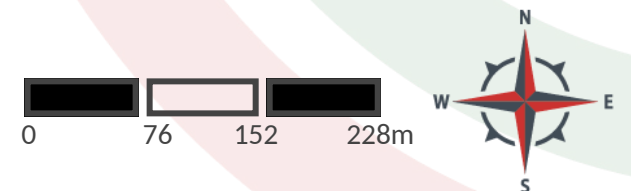
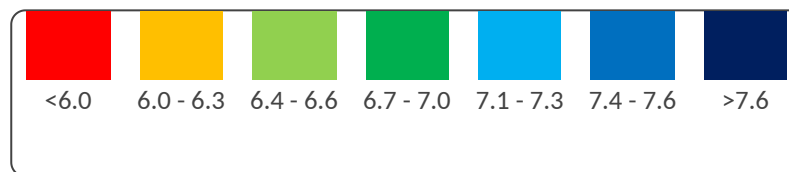
Field Name:	Churchfield
Sample Date:	29 Apr 2024



pH results

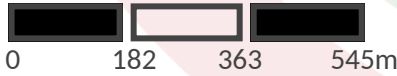
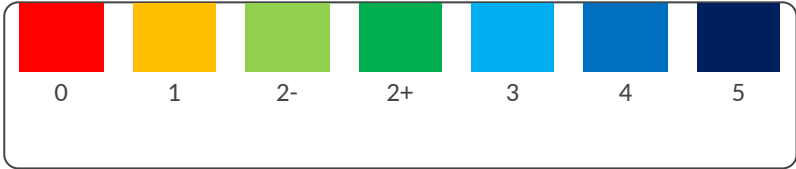
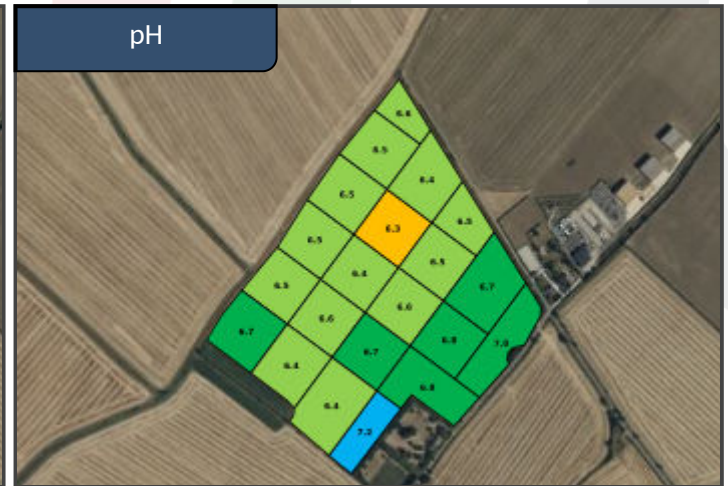
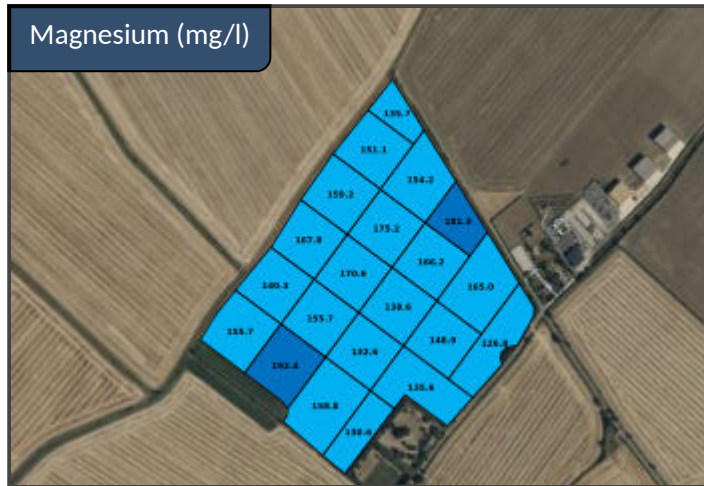
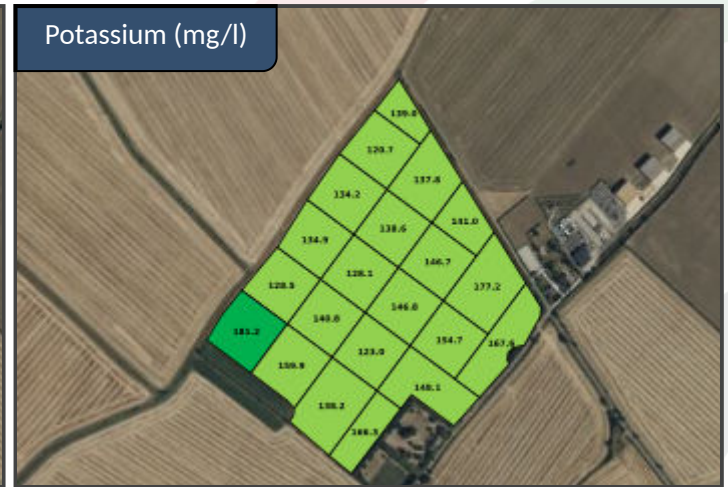
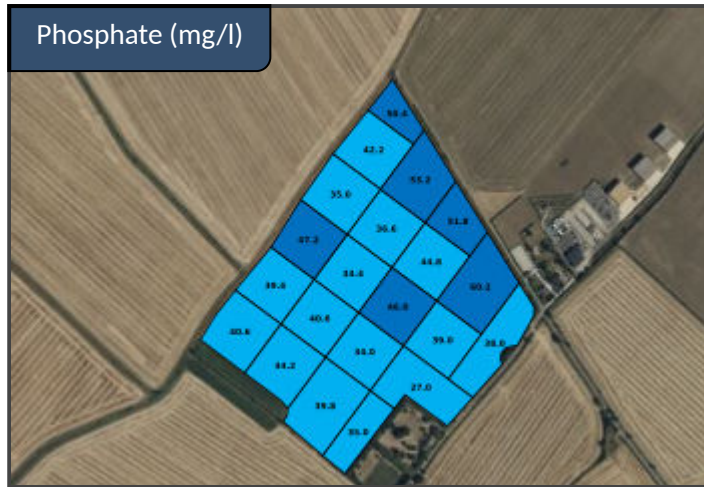
Field Name:	Collets
Target pH:	6.7
Lime Type:	Ground limestone
Sample Date:	29 Apr 2024

pH	Lime Req.	Area (ha)	Tonnes
6.4	3.1	1.00	3.1
6.5	2.5	1.00	2.5
6.5	2.3	1.10	2.5
6.5	2.2	1.40	3.1
6.5	2.1	1.12	2.3
6.5	2.0	1.00	2.0
6.5	1.9	1.04	2.0
6.5	1.7	1.06	1.8
6.5	1.6	0.98	1.6
6.6	1.5	0.73	1.1
6.6	1.1	1.00	1.1
6.6	0.9	1.00	0.9
6.6	0.8	1.00	0.8
6.7	0.3	0.52	0.2
6.7	0.0	1.00	0.0
6.7	0.0	1.33	0.0
6.8	0.0	1.12	0.0
6.9	0.0	1.00	0.0
6.9	0.0	1.21	0.0
7.0	0.0	1.16	0.0
7.2	0.0	0.77	0.0
Av pH	No. samples	Total	Total



Routine results

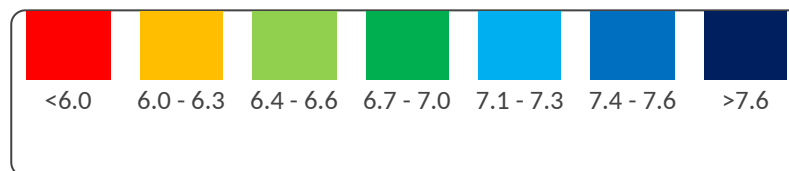
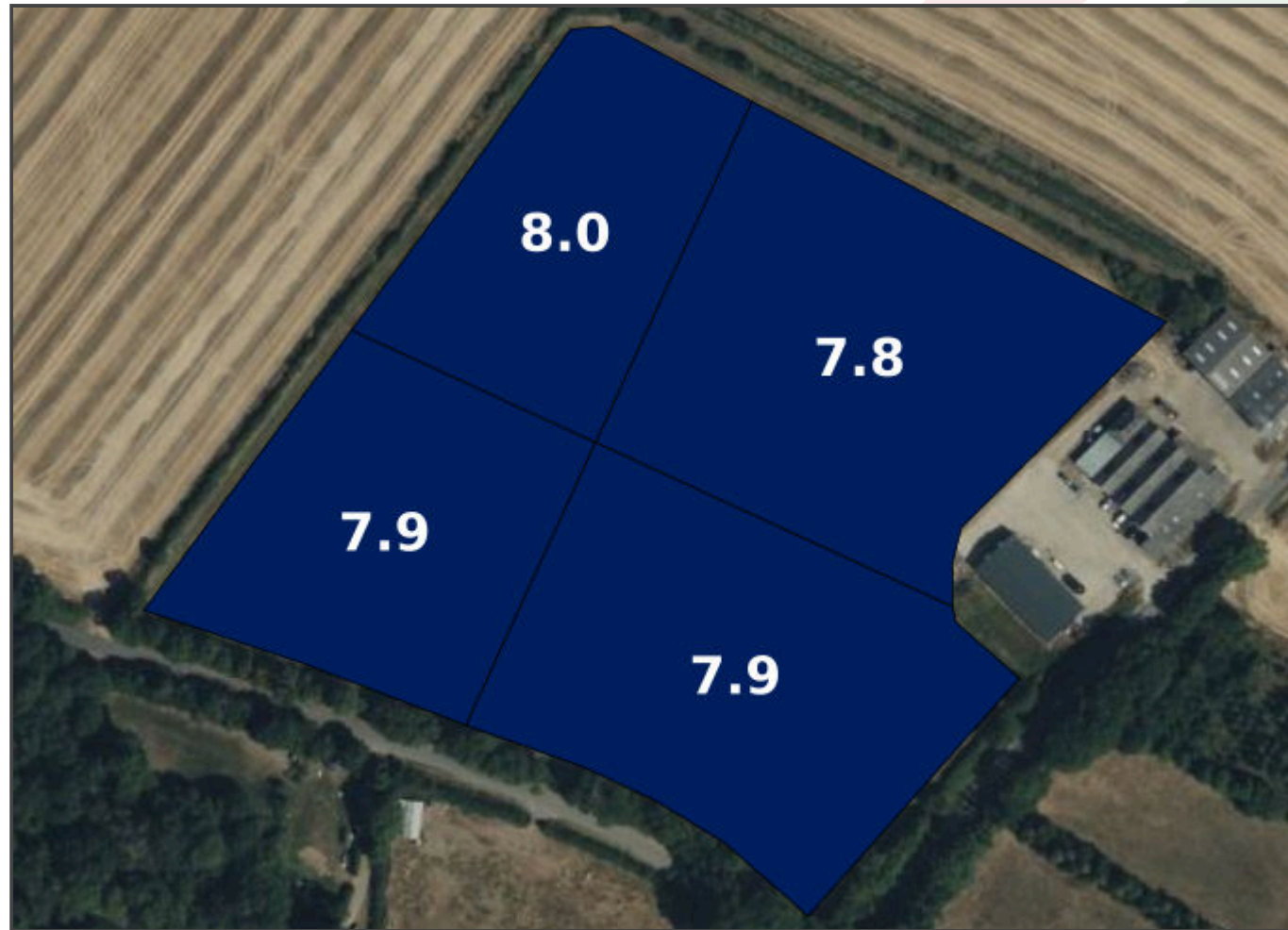
Field Name:	Collets
Sample Date:	29 Apr 2024



pH results

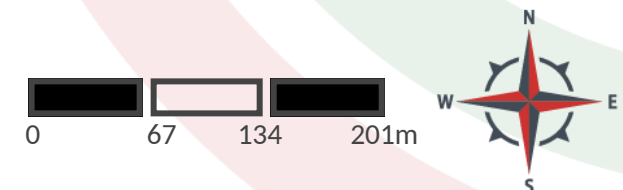
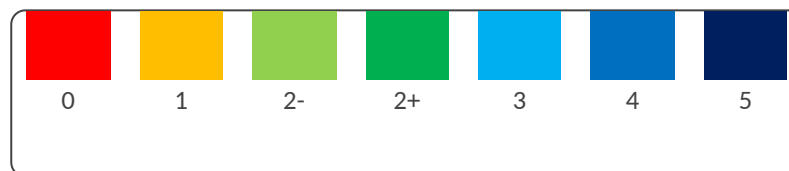
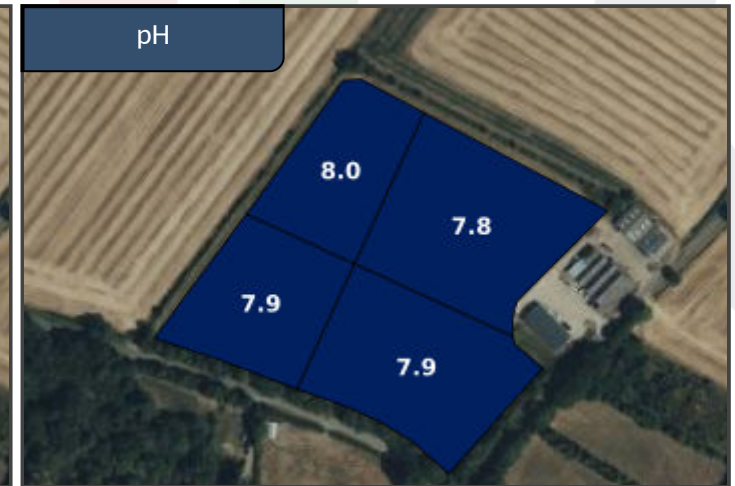
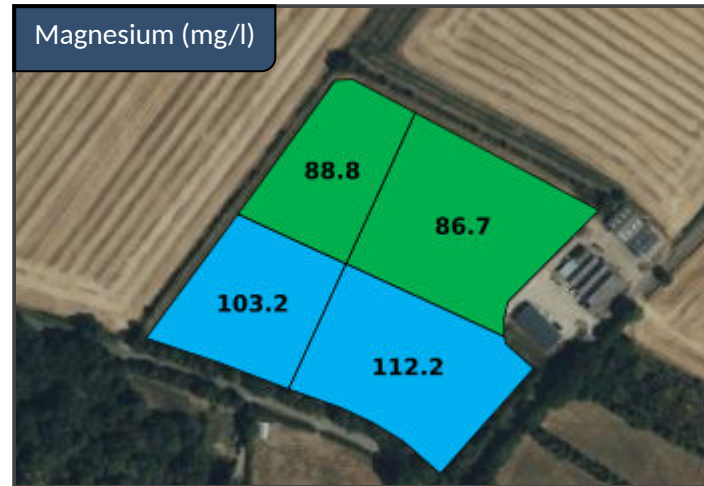
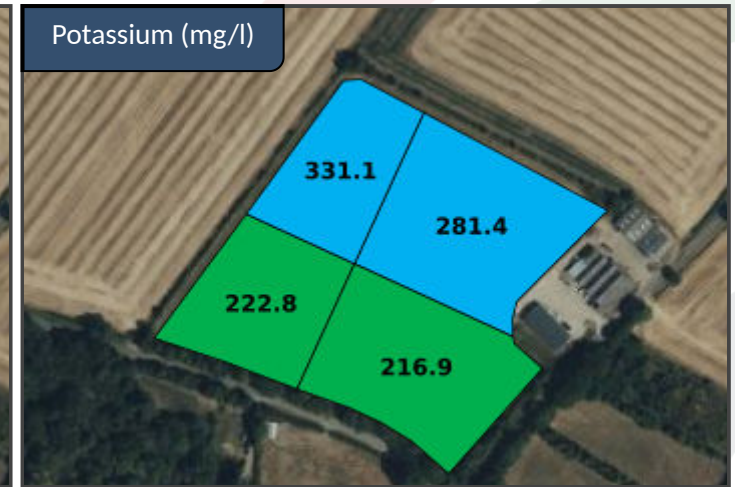
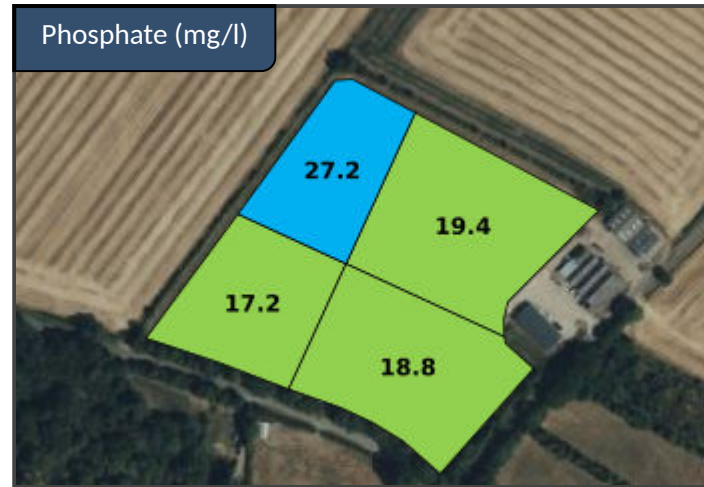
Field Name:	Ex Grass
Target pH:	6.7
Lime Type:	Ground limestone
Sample Date:	29 Apr 2024

pH	Lime Req.	Area (ha)	Tonnes
7.9	0.0	1.28	0.0
7.9	0.0	1.17	0.0
7.9	0.0	0.84	0.0
8.1	0.0	0.75	0.0
Av pH	No. samples	Total	Total
7.9	4	4.05	0.0



Routine results

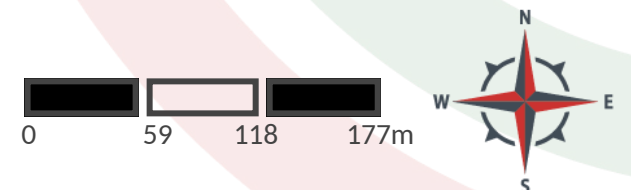
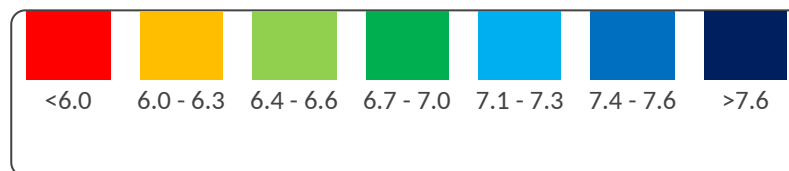
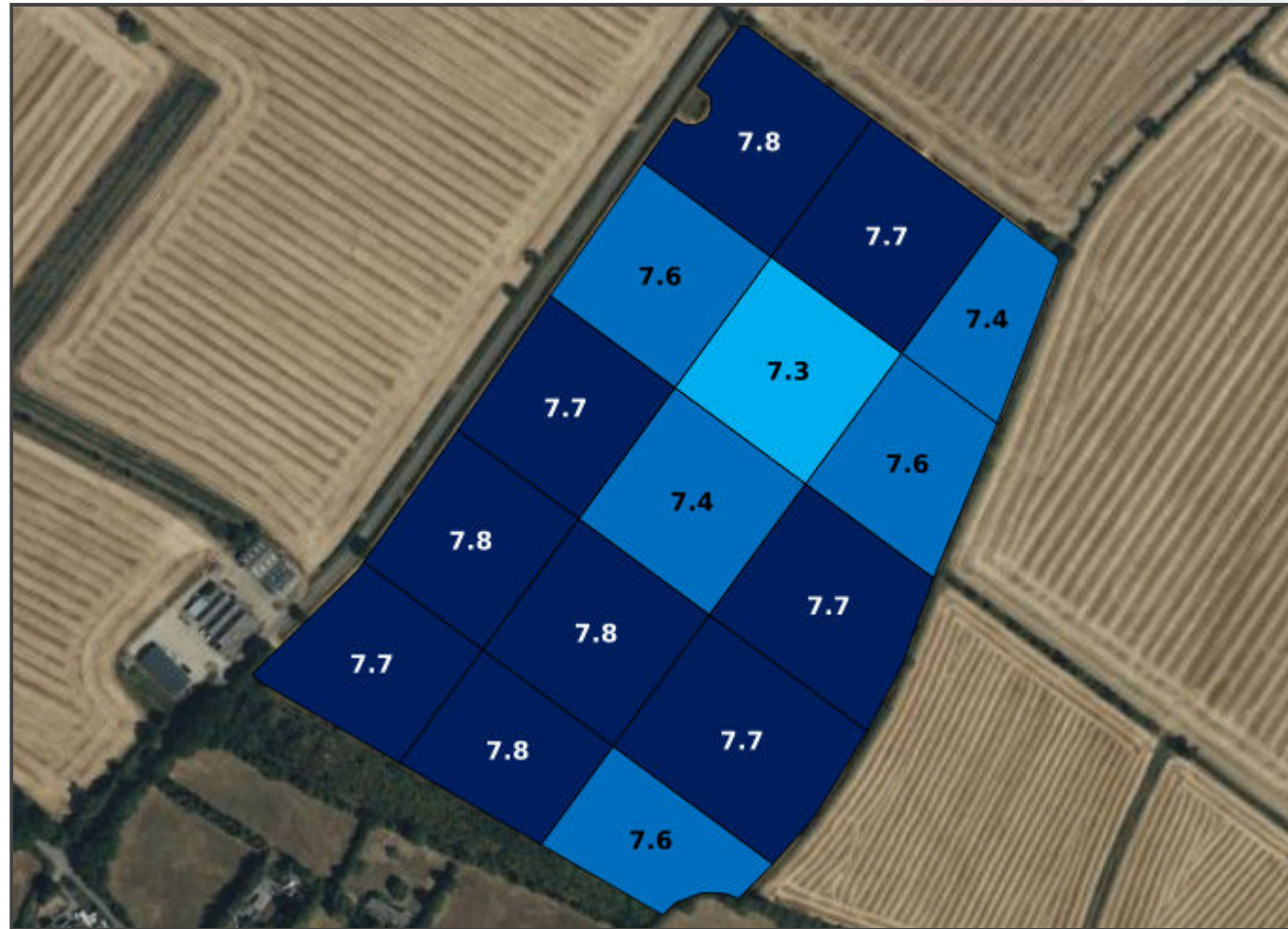
Field Name:	Ex Grass
Sample Date:	29 Apr 2024



pH results

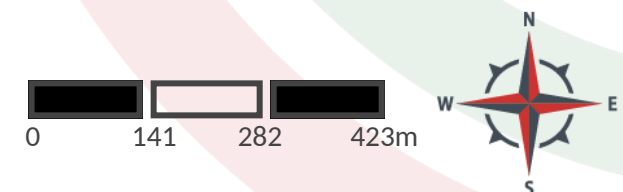
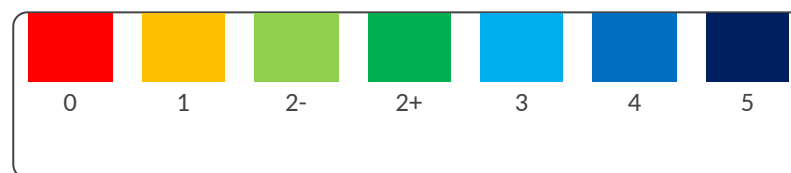
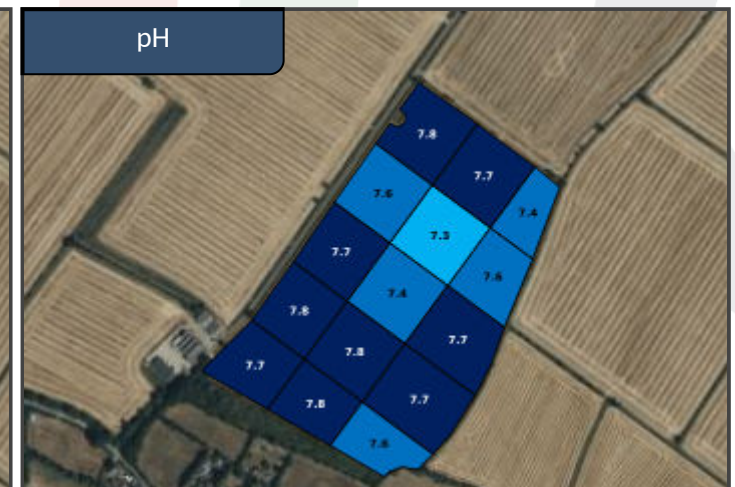
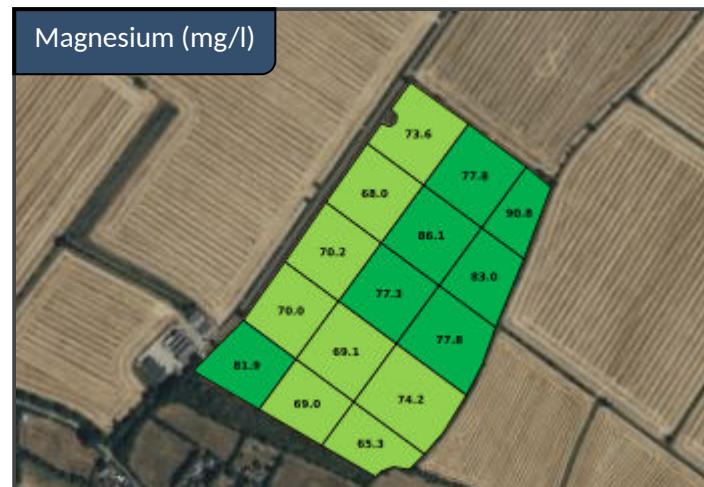
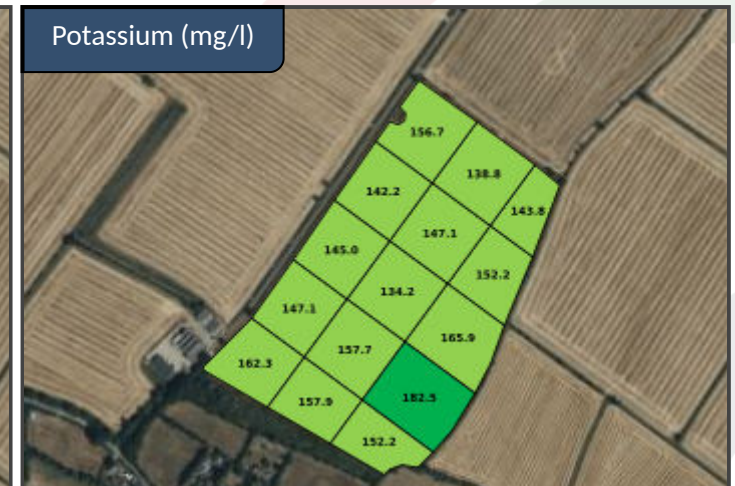
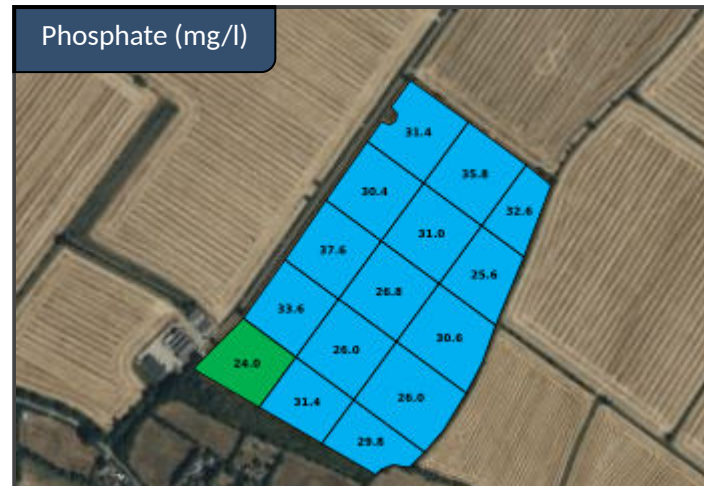
Field Name:	Village field
Target pH:	6.7
Lime Type:	Ground limestone
Sample Date:	29 Apr 2024

pH	Lime Req.	Area (ha)	Tonnes
7.4	0.0	1.00	0.0
7.4	0.0	0.62	0.0
7.5	0.0	1.00	0.0
7.6	0.0	0.96	0.0
7.6	0.0	1.59	0.0
7.7	0.0	1.24	0.0
7.7	0.0	1.95	0.0
7.7	0.0	0.94	0.0
7.7	0.0	1.11	0.0
7.8	0.0	0.81	0.0
7.9	0.0	1.01	0.0
7.9	0.0	1.92	0.0
Av pH	No. samples	Total	Total
7.7	15	14.14	0.0



Routine results

Field Name:	Village field
Sample Date:	29 Apr 2024





AGRI SOIL

Independent sampling, measuring and scheme
design services

www.agrisoil.co.uk

hello@agri-soil.co.uk