



"T" DRIVER



SOUTHERN NEVADA MODEL T CLUB
A CHARTER MEMBER OF THE M.T.F.C.A.

October 2024



M
E
E
T
I
N
G



B
R
E
A
K
F
A
S
T

Don't
forget to
check our
website. It
contains
lots of
great info!

UPCOMING

NEXT MEETING:

10/08/24

~Winchells

199 E. Warm Springs Road
Las Vegas, NV 89119
6PM Dinner ~ 7PM Meeting

BREAKFASTS



10/05/24

NO CLUB BREAKFAST

Optional Activity:
Cars & Coffee on Eastern
at Richmar at 6:30am

10/12/24 \$

~NLV Airport

2730 Airport Drive
NLV, NV 89032

10/19/24

NO CLUB BREAKFAST

Optional Activity:
Cars & Coffee on Eastern
at Richmar at 6:30am

10/26/24 \$

~Skyline

1741 N. Boulder Hwy.
Henderson, NV 89011

** All information, dates, times etc. can
be found on our Club Website



1000 N Green Valley Parkway #440-267

President

Tom

(817) 689-5750

tomcollins727@gmail.com

Vice President/Webmaster

Ron

(702) 460-4474

southernnevadamodelt@gmail.com

OUR GOALS

- To promote the Model T Ford
- To Promote the preservation and restoration of this National Treasure
- To provide information and assistance to all interested people

www.southernnevadamodeltclub.org

Check Out Our Social Media
Platforms



Scan Me





"T" DRIVER



SOUTHERN NEVADA MODEL T CLUB
A CHARTER MEMBER OF THE M.T.F.C.A.

October 2024

T
Driver
Events
in Blue

UPCOMING EVENTS

October (all month) 2024

Celebrity Cars & Coffee

9510 S. Eastern Ave.
Henderson, NV 89123
7am-10am

Oct. 4th & Oct. 5th Henderson Hot Rod Days

10/4/24
5pm-10p
10/5/24
9am-7pm
Registration required
Free to Attend
[Boulder City Cruisin](#)
[Association -](#)

October 13, 2024 Cadence Car Show

10am-3pm
Registration required~form
attached or register online
[Wake up to Events |](#)
[Cadence Master Planned](#)
[Community | Nevada](#)
[\(cadencenv.com\)](#)

October 20, 2024 Model A Picnic

Spring Mountain Ranch State
Park
6375 NV-159
Blue Diamond, NV 89004

SAVE THE DATE

CLUB ELECTIONS

Nov. 12 at monthly mtg.

December 7, 2024 2024 SNMTC Annual Christmas Party

- 4pm-7pm
- Stay tuned for info in upcoming newsletters



T's Shop Talk

Greetings All!

Summer Edition Newsletter

Hi everyone!

Just when I thought the heatwave might be ending, it seems I was mistaken. It's been a scorching summer! I hope you're all doing well and have your cars ready for a fantastic fall.

We've had a car show in September and another one is coming up in October. I also hope you'll join us for breakfast every other weekend—it's been going great so far! There has been some discussion about moving our meeting day and time to right after breakfast at the North Las Vegas Airport. We are looking into all options and would love to hear your thoughts.

As we get older, nighttime outings can be challenging, so we're exploring ways to make our club more efficient and enjoyable. Your ideas are always welcome.

Don't forget the Model A Club picnic is coming up! Lastly, Board Members, please start thinking about nominations for the third annual "Harold Mann Founders Award" for exceptional contributions to the club. Plans for our Christmas banquet/dinner. Looking forward to seeing you all soon.

Safe travels,
President Tom

"You miss 100% of the shots you don't take" Wayne Gretzky

It's that time of year to renew your membership in the Southern Nevada Model T Club.

SNMTC Dues are \$30

Make checks payable to SNMTC – Please, do not mail cash

1000 N Green Valley Pkwy

#440-267

Henderson, NV 89074

(Renewal form at end of this newsletter)



"T" DRIVER



*SOUTHERN NEVADA MODEL T CLUB
A CHARTER MEMBER OF THE M.T.F.C.A.*

October 2024



Happy Birthday to you,

Happy Birthday to you,

October 1st – Judy F October 6th – Raymond L. October 10th – Karen C
October 12th – Leota M. October 23rd – Griff R October 25th – Atsuko F
October 26th – Herb M



HAPPY ANNIVERSARY

5th – Joyce & Todd

Sunshine Girl Report



Our Sunshine Girl, Cathy has reported that we need to keep Dirick and Aaron in your thoughts and prayers. Dirick is recovering from leg surgery, and Aaron has undergone gallbladder surgery. Your support and well-wishes mean the world to them during their recovery. Let's surround them with love and positivity as they heal!



"T" DRIVER



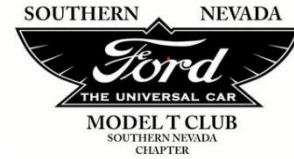
SOUTHERN NEVADA MODEL T CLUB
A CHARTER MEMBER OF THE M.T.C.A.

October 2024

SOUTHERN NEVADA MODEL T CLUB

Minutes of the September 2024 Meeting

Meeting called to order by: Ron at 7:12 pm



OFFICERS ROLL:

PRESIDENT - Thomas A. Collins (absent)

VICE PRESIDENT - Ronald L. Custer, Sr

WEBMASTER - Ronald L. Custer, Sr.

SECRETARY - Karen Custer (absent)

MEMBERSHIP - Judy Fine

TREASURER - Margie Collins

Newsletter - Karen Custer (absent)

Tour Master - John Warren

Historian - Wallace Bellows (absent)

Sunshine Girl - Cathy Guerin

Sergeant at Arms/Drawings - Dirick Van Gorp

CHAIRMAN OF THE BOARD/FOUNDER-Harold Mann

President Report: *Upcoming Events Reminder:* 1) **The Fall Picnic and Auction** with the Model A Club at Spring Mountain Ranch is on 10-20-24. The Model A club will provide the main course. Please bring a dish to share and your auction items as well. Each club maintains the auction proceeds from the items donated by members of their corresponding club.

2) **The Cadence Car Show** is on 10-13-24. 3) **The Annual SNMTC Christmas Party** is on 12-7-24 at Dean's Place.

4) **Elections for the 2025 Officers/Board Members** is scheduled to take place at our November Club Meeting. Please plan to attend. Now is a great time to join in and lend a hand to the club that you love.

Vice President/Webmaster Report: Ron ran the meeting as President Tom was unable to attend. Ron shared that the website is doing well and that that annual renewal of \$311.86 (or \$587.74 for 2 years) is due. Motion to approve one year renewal was passed. Our Facebook group continues to grow and is over 475 members. These members span the globe.

Secretary Report: Secretary absent: however, minutes approved.

Membership Report: Jacob Mangold accidentally let his membership lapse and plans on renewing for the upcoming year. No additional members to report currently.

Treasurer Report: Increasing balance given.

Newsletter Report: Ron shared that Karen is condensing the content for the newsletter.

Tour Master Report: *The October Breakfasts are as follows:*

October 12- NLV Airport

October 26- Skyline Casino

Side note: It was discussed about possibly reducing the monthly breakfasts to twice a month. This will be further discussed at the July meeting.



"T" DRIVER



*SOUTHERN NEVADA MODEL T CLUB
A CHARTER MEMBER OF THE M.T.F.C.A.*

October 2024

Historian Report: Although Wallace was absent from our meeting; make note that Wallace sends Karen a monthly contribution for the newsletter each month and is an active participant in helping to make the newsletter so educational and interesting!

Sunshine Girl Report: Cathy asked if anyone knows about any members that need a card or a phone call to please let her know. Thankfully, there is nothing to report at this time.

Open Forum to Discuss Old & New Business: This part of the meeting was used as an open forum to discuss ideas to revisit in future meetings.

- 1) Currently, breakfasts have been reduced to twice a month.
 - a. Breakfasts listed in report above and in the newsletter and on the website.
- 2) Griff suggested a few ideas to help recruit more potential members
 - a. He asked about having a table at Cars & Coffee on Eastern & Richmar. It opens at 6:30a.m. It was suggested that we have a table and a couple of cars there with information about our club and have applications on hand.
 - i. October 5th - Cars & Coffee
 - ii. October 19th - Cars & Coffee
 - b. Griff asked about maybe making an electric Model T since that seems to be the wave of the future to help garner more exposure and perhaps attract a younger generation.
 - c. Other clubs have workshops once a month at members garages. Ron Custer suggested having educational workshops for the public, maybe show cars at schools etc., again to generate more interest in the Model T cars.
 - d. There was a suggestion to combine the Model T with the Model A Club because they are all old Fords and wonder how everyone felt about that and if that was a plausible option.
 - i. Dale will contact MAFCA to see what their thoughts are regarding this topic
 - ii. Ron will contact MTFCA to see what their thoughts are regarding this topic

Sergeant at Arms: 50/50 Drawing:

Bob G won \$22 and Dirick offered a special drawing and Cathy won.

Next Meeting: October 8, 2024

Meeting adjourned at 8:05pm.

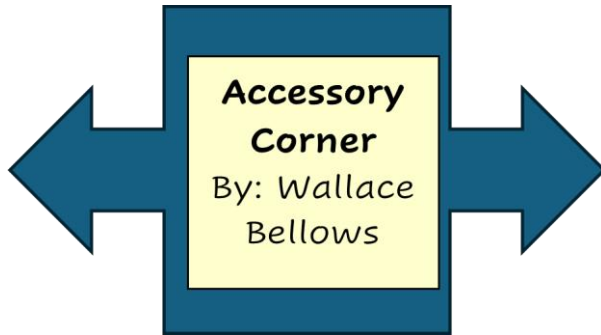


"T" DRIVER



SOUTHERN NEVADA MODEL T CLUB
A CHARTER MEMBER OF THE M.T.F.C.A.

October 2024



In last month's "Accessory Corner", I scanned a couple pages from a 1925 Montgomery Wards Supply Catalog. Well, I thought I'd follow suit

this month with images from a 1917 Service Motor Supply Catalog out of Chicago. The catalog has nearly 150 pages of accessories covering numerous automobiles but like most accessory catalogs of the day the majority of the accessories were for the Model T. They even have an index in this catalog showing which pages were dedicated to just the Ford car!

Four of these page show some of accessory bodies made just for the T and the TT truck. It's really amazing how many people we're capitalizing on Henry Ford's production car and building bodies to change the appearance or hauling capabilities. Still underneath all the esthetics and bling was still the ubiquitous Model T Ford!

Yet another accessory catalog for the Accessory Corner!





"T" DRIVER



SOUTHERN NEVADA MODEL T CLUB
A CHARTER MEMBER OF THE M.T.C.A.

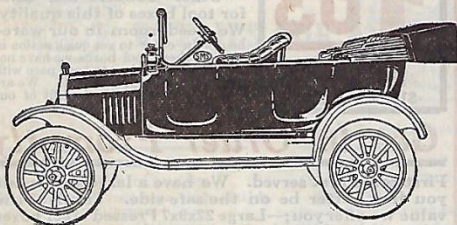
October 2024

"SNAPS"

LOOK! Another smashing value The Genuine Ford 1917 Touring Body

\$10.00 less than offered by any other jobbers. By a fortunate purchase we have scooped the market.

You can put new 1917 bodies on old Ford cars and make 50% profit. \$10.00 more than your competitor who does not buy from "SNAPS." These bodies are new. Taken from new 1917 cars.



They will fit all Model "T" Fords. There is a big demand for touring bodies for replacing the old two-door style, or for converting the roadster into a five-passenger touring car. Then remember, the Ford chassis is the same for Roadster or Touring car; consequently all you have to do is to put on the body and bolt it to the frame. Another feature of importance is that these bodies have about four more inches of leg room in the front which means more comfort for the occupants. Each body is furnished complete with the latest windshield, top with side curtains, and cushions. Furnished in black only. Looks like \$300 worth. Weight, crated for shipment approximately 350 lbs.

Stock No 14108.

\$83.00
F. O. B.
CHICAGO

1917 Touring Car Body
Complete with Top, Top Boot,
Windshield, and Seat Cushions

To Fit Model "T" Ford Chassis Only

Roadster Body all Complete \$53 STOCK NO. 14110

Most remarkable value ever offered.
This Beautiful Racing Body For \$55.65

Popular "Speedway" Racing Bodies For Ford Cars

Other jobbers charge \$62.50 for a body of this high quality, we save you \$6.85 on every body; it's that much more added to your retail profit by buying from "SNAPS." Buy them NOW while our stock lasts.



This Classy Racing Body Is the Hit of the Season

The beautiful stream line effect—the tapering, racy appearance—is suggestive of an 80-mile an hour clip. The absence of wind resisting parts will actually increase the speed of any Ford. Hundreds of owners of old model Fords are buying these stylish looking racing bodies. The dealer makes a handsome profit. It has absolutely no equal for beauty, class and comfort. It completely covers the Ford chassis and makes it look like a high-priced Race-about. Strong wood frame work covered with 20 gauge sheet steel, filled and coated, in gray lead color, ready to be finished in any color the owner desires. Hood and radiator shell come finished in baked black enamel. About two hours time will attach it to any Ford Chassis.

Popular "Speedway" Racing Body

Stock No. 14103

\$55.65
Complete
F. O. B.
Central
Indiana

To Fit Model "T" Ford Chassis Only

SPECIFICATIONS

Equipped with a beautiful cowl and undivided seat. Upholstered with high grade, beautiful imitation leather. Back of seat diamond-tufted or pipe effect like high class touring car—soft cushion seat—new dash and floor boards—18 gallon gas tank with round ends and brass filler caps—extra large baggage or tool compartment in rear—dash same shape as 1917 Ford. Latest streamline hood and radiator shell with hood fasteners and hard rubber radiator cap. Use the regular radiator and chassis. Mechanically perfect. Designed by experts.

Length of body back of dash.....	88	inches
Length of body including radiator hood.....	110½	"
Total length from radiator to rear.....	114½	"
Height of center of cowl curve from floor.....	21½	"
Length from dash to center of cowl.....	21½	"
Distance from dash to front edge of seat.....	29	"
Width of seat inside cushions.....	33	"
Depth of seat front to rear.....	16½	"
Height of back of seat above cushion.....	15	"
Weight, crated for shipment.....	224	pounds

Order one and display it. You are sure to sell it quick.

Retails Easily for \$100.00

Clover Leaf Body is Shown on Page 17



"T" DRIVER



SOUTHERN NEVADA MODEL T CLUB
A CHARTER MEMBER OF THE M.T.C.A.

October 2024

"SNAPS"

Only \$9.98 for these High Grade Slip-on Bodies

An old contract enables us to offer these high-grade Slip-on-Bodies for Fords at \$9.98; others are now charging \$11.00. We make a clear saving to you of over \$1.00 on every sale. They retail for \$18.00 to \$20.00 and you make 100% profit by buying now from "Snaps." They are big sellers at this season of the year.

The "Service" Slip-on Body for Model "T" Fords
Converts a Ford Runabout into a Delivery Wagon. It can be put on or taken off quickly.

Stock No. 14101

F.O.B. Factory
Indiana

9.98
Complete



The most Practical delivery attachment ever applied to a Ford Roadster. A rapid seller to farmers and merchants. Bolts on to the chassis in place of the regular rear section. Changes a Ford from pleasure to Delivery Truck in a few minutes. There will be a big demand for these bodies this summer. Will fit all model "T" Fords.

Specifications: Loading space, 52 in. long by 33 1/2 in. wide; side panels, 54 in. high inside, topped with hardwood rails; outside body braces, 45 in. regulation flare boards; drop-end gate, easily removed or attached; rear fenders need not be changed. Complete with necessary bolts for attaching to the car; also, special rear lamp bracket. Handsomely finished in black. Shipping weight about 100 pounds.

Commercial Bodies \$27.98

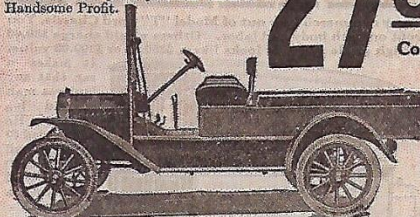
Reduced from \$29.95 to \$27.98 in spite of the fact that the cost of materials has increased and all manufacturers are raising prices. Order now if you want to cash in on this big sale.

The Service Commercial Body for Model "T" Fords

Stock No. 14104

Retails for \$50.00 and give your shop man a profitable job of putting it on. This is one of the Biggest Selling Commercial Bodies on the Market and at our low price you can make a Handsome Profit.

27.98
Complete



F.O.B.
Fac-
tory
Ind-
iana

A commercial body for Ford Chassis that will give the maximum of service, and just the style in big demand. The Large quantities in which they are produced enables us to make this exceptionally low price of \$27.98. There is a big demand for this body among farmers, dairymen and transfer men. This is a big profit-making opportunity for you and now is the time to go after this business. Will fit all model "T" Fords.

Specifications: Body. The body is constructed on our standard hardwood frame, designed to fit any model "T" Ford Chassis. The big idea that we have in mind is to produce strength, without adding unnecessary weight. Panels are 12 inches high inside. Corners, metal bound and the entire body exceptionally well ironed and braced. Floor protected by iron strips running lengthwise. Five-inch flare boards with heavy edge irons and brass regular. Special seat with hand rails. Trimming, Full width cushion of good grade artificial leather, folding lazy back on driver's seat. Painting, Dark green, regular. Any lettering desired can be furnished at extra cost. Loading space back of seat, 43 x 63 inches. Full width rear end gate with chains enables one to adjust the body to practically any style of load. Shipping weight, crated, approximately 400 pounds. Equipment includes rear lamp bracket, toe boards and irons, all iron necessary for attaching to chassis.

A Special Drive on Express Bodies FOR FORDS at \$47.95

The quality in the body can't be duplicated elsewhere under \$60.00. We give you over \$12.00 more profit on

every sale. They should retail at 100% profit and keep your shop working overtime putting these attractive

Express Commercial Bodies for Model "T" Fords



Specifications: Top—heavy, well ironed, six-post, express top, 56 in. high. Special heavy brace irons designed to withstand the rough driving that's bound to come to a car used for commercial purposes. Deck is full-slatted and covered with heavy black duck. Roll-up curtains, sides and back of heavy oiled duck. Separate roll-up curtains with large mica lights on either side of delivery seat, of heavy oiled duck. Body constructed to fit standard Model "T" Ford Chassis. Sills and subills are carefully selected and seasoned hardwood, will give the maximum of carrying strength

on every available Chassis for Grocers, Markets, Mail Carriers, or any business requiring a strong delivery truck. The side curtains make it practically a closed delivery body. Thousands of these delivery bodies in use on Ford Cars prove conclusively what a money making proposition attaching these bodies is. Owing to our special low price there is a wide margin of profit for our dealers on every transaction. Will fit all Model "T" Fords.

Stock No. 14102

47.95
Complete
F. O. B.
Factory
Indiana

without adding unnecessary weight to the car. Every precaution is taken in its construction to provide a body that will "stand the racket" of commercial use. Panels 10 in. high inside, with heavy flare boards. Seat is full width, cushions of durable artificial leather. Loading space (back of seat), 42x62 1/2 in. Full width rear end gate with chains enables one to adjust the body to practically any style of load. Body finished in green striped and varnished, top, black. Shipping wt., knocked down and crated, 425 lbs. Equipment includes rear lamp bracket, toe boards and irons, and all irons for attaching to chassis.

Are you getting your share of the profits made in commercial bodies?

SERVICE MOTOR SUPPLY CO. - CHICAGO, U. S. A.



"T" DRIVER



SOUTHERN NEVADA MODEL T CLUB
A CHARTER MEMBER OF THE M.T.C.A.

October 2024

"SNAPS"

Make a Profit Out of Every Ford Car

Working our body factory to its fullest capacity cuts down overhead, and enables us to offer these beautiful panel bodies at "before the war" prices. You can't possibly duplicate these prices on direct factory orders. You make 100% profit on the re-sale of these bodies, you keep your shop busy putting them on the cars at \$10.00 to \$25.00 extra profit on every job.

Only \$54.90 for This Panel Top Body

Makes a classy commercial car out of Model "T" Ford Chassis. You make a profit on both body and labor. Others would charge \$80.00 for such a high grade body. It looks like a \$250.00 or \$300.00 value.



It makes a car that any business man would be proud of. He will be glad to pay the retail price of \$100 which will give you a big profit.

"Service" Panel Top Body for Model "T" Fords

A commercial body that, in addition to its splendid characteristics as a delivery vehicle, will advertise a business in a high class, dignified and thoroughly effective manner. Especially adapted to all classes of merchants who require a high-class, durable and thoroughly

54.90

Complete
F.O.B. Fac-
tory Indiana

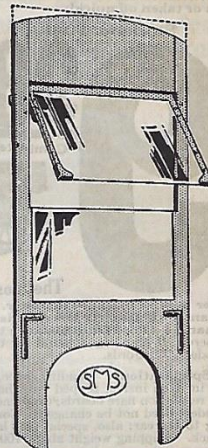
weather-proof body for their deliveries. It will fit any model "T" Ford Chassis. Specifications: Body—Solid side panels of heavy gauge sheet steel.

fully slatted on the inside. Glass window on either side of the Driver's seat. Deck is covered with black rubber duck. Double doors of steel are furnished in the rear, as illustrated, with two large oval glass windows. All corner are securely braced so as to prevent racking. Seats are full width and cover a box that can be used for tools, etc. Windshield not regular equipment on this body (\$10.50 Extra). Trimming—Full width cushion of good grade artificial leather. Folding lazy back on driver's side of seat. Painting—Dark green with neat striping, regular. Loading Space—(Back of seat), 43 inches wide, 56 inches long and 53 inches high. Shipping Weight—knocked down and crated under 34 inches, 725 pounds. Equipment—Rear lamp bracket, toe boards and irons necessary for attaching to chassis.

WINDSHIELD FURNISHED IF DESIRED AT \$10.50 EXTRA

Wind Shields at \$10.65

One of the great bargains of this great sale. Sell them for \$25.00 to every owner of a Ford Commercial Body car—you make a big profit on an easy sale in addition to a nice profit on your shop labor putting them on.



"Service" Wind Shield

This built-in windshield should be ordered with any of our commercial bodies with top. Divided in center, the upper half is crystal plate, equipped with hinges for ventilating purposes. Shipping weight 40 pounds. They will fit any Ford car.

Stock No. 82903

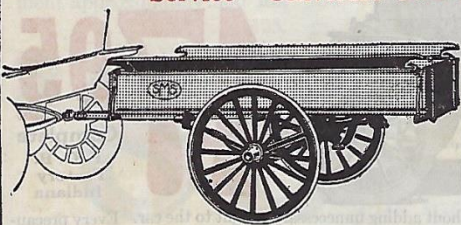
10.65

Complete from
Factory,
Central Indiana

Order a stock now and equip all the converted Ford units in your territory. In ordering Wind Shields, be sure to mention whether wanted for 1917 stream line dash or old type dash.

100% Profit On Two Wheel Trailers—Now Priced at \$48.65

"Service" Universal Two-Wheel Trailer Retails For \$100.00



Every farmer—every rural car owner needs this marvel of utility. No other jobber or manufacturer offers so much value—universal coupling—heavy springs—ball bearing and rubber tires—for such a low price—look on the specifications and illustration—our liberal guarantee covers every detail—money back if not satisfied—go after this business and cash in now. It's a bargain—a big buy and we want you to share in this great proposition.

These Trailers offer the best opportunity to get the most out of a motor car. They provide a way to haul at a low cost and at the same time preserve the appearance of the automobile. In short, trailers add to the usefulness of both trucks and pleasure cars at a minimum cost.

OPTIONAL

Trailer complete with 2 solid rubber tires. Stock No. 77602, \$59.15. Trailer complete with steel tire and plain friction bearings Stock No. 77603, \$37.85. Trailer complete with 3 in. clincher Pneumatic tires, Stock No. 77604, \$62.65. Top and curtains. Stock No. 76301, \$14.50.

No. 1. Universal plate end hitch. This hitch permits of action in three different directions, minimizing the load on the car. It is regular equipment on two-wheel models.

No. 2. Ford spring hitch, for attaching trailer to rear spring of Ford car, can be furnished instead of No. 1 hitch, without extra cost if ordered.

Stock No. 77601

48.65

Complete F.O.B.
Factory,
Central Indiana

Specify Which Hitch Is Wanted When Ordering

Specifications: Body—40x48 inches outside, with 10-inch panels. Drop end-gate, front and rear. Extra well-ironed and braced throughout. Five-inch flare boards. Springs—1½ inches, five and six leaf platforms, springs hung under axle. Axle—1½ inches. Track—Standard (4 feet, 8 inches). Bearings—Ball bearing. Wheels—Sarven patent, best grade hickory, 32 inches high, 1½ inch spokes and 1½ inch riveted rims. No. 13 flange, specially high and riveted between each spoke. One and one-fourth inch solid rubber tires, regular. Connection—Plate and No. 1 universal hitch is regular on this trailer. See illustration at top of page. If trailer is for Ford car, order Ford spring hitch shown above. Painting—Dark green. Capacity—800 pounds.

Shipping weight, about 550 pounds. Top shown on page 23 can be furnished at extra cost (See price list.)



"T" DRIVER



SOUTHERN NEVADA MODEL T CLUB
A CHARTER MEMBER OF THE M.T.C.A.

October 2024

"SNAPS"

Big Sale of "Gibraltar" Express Bodies

For Ford Truck Units that Net the Dealer Unusual Profits

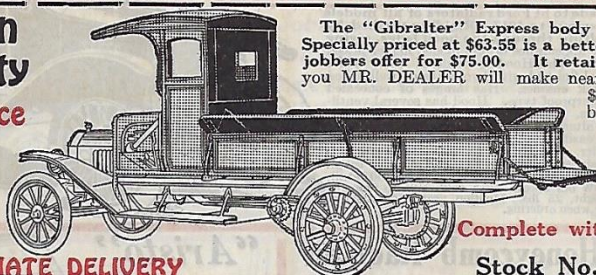
**1½ Ton
Capacity**

Loading Space

110 inches

by

45 inches



The "Gibraltar" Express body with Driver's cab, Specially priced at \$63.55 is a better body than other jobbers offer for \$75.00. It retails for \$125.00—and you MR. DEALER will make nearly 100% at least—

\$10.00 to \$25.00 more, by buying now from "Snaps". But best of all, the profit is available at once because we can make immediate delivery.

Complete with Driver's Cab

IMMEDIATE DELIVERY

Stock No. 14111

No waiting for future delivery—no disappointed customers—but this price can't hold for long—YOU must order now to get in on this deal. Many of the Ford Truck unit body manufacturers are unable to make delivery on Bodies. We ship immediately. Buy any make of truck unit you wish and attach to it our Gibraltar Body. You save \$10.00 to \$25.00. These bodies will fit all units that have a 32 inch wide frame such as Smith-Form-a-Truck, Hudford, Maxter, Ames, Dearborn and others.

SPECIFICATIONS AND DIMENSIONS—

Loading space in the clear (inside), 45x110 inches. Well seasoned hardwood sills and hardwood floors protected with steel strips. Panels 14 inches high (outside), with heavy, wrought braces inside and with heavy, malleable outside braces. 7 1/2 inch flare boards, supported with wrought braces and protected by double steel strips. End gate heavily ironed and equipped with chains. Painted medium light green with appropriate striping. Bolts used throughout body. Net weight, approximately 830 pounds. Our low price includes: Express Body with pad, as shown, having upholstered back and full-width cushion, fareboards and drop end gate with adjustable chain.

63⁵⁵

Complete F.O.
B. Ind. Fac-
tory, Shpg Wt.
about 900 Lbs.

Extra: If desired we can furnish Built-In Windshield and Filler Board, Fore Door, Driver's Storm Curtains and Rear Fenders, for \$20.00 extra.

Extra: By slight alterations to the frame, these same bodies are adaptable to other units with wider frames such as Reddon, Truckmobile, Kelley Convertible and about twenty others, for which we charge you only \$3.00 extra.

Dealers! Cash in on This Special Offer

Of "Atlas" Cabs for Fords to Net You Nearly 100% Profit

"Atlas" Cabs Furnished Separately For Fords are made to fit Ford Truck Units

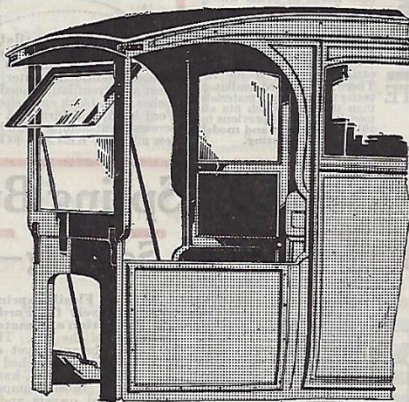
Such as a Smith-Form-a-Truck, Hudford, Maxter, Ames, Reddon, Truckmobile, Kelley Convertible and other Extended Chassis. A chance for "SERVICE" dealers to save money. These cabs are worth \$45.00 to \$60.00.

ENCLOSED CAB

This cab is furnished as shown in the cut, complete with built-in windshield, permanent, fore door on left side, roll-up driver's curtains in the rear with celluloid window, full width cushion and back upholstered in a good grade leatherette. Slatted roof covered with black oiled duck. Windshield of ventilating type swings either in or out. The cabs are painted either green or yellow. Be sure to state on your order color desired.

Stock No. 14112

39⁹⁵
Com-
plete
F. O. B.
Indiana
Factory
Net Wt.
225 lbs.



Compare our low prices of \$29.95 and \$39.95 with what it would cost you to make up such high grade Cabs. Other jobbers charge \$45.00 to \$60.00—you make 20% to 30% more by buying from "Snaps".

Look at the big profit—they retail for \$65.00 to \$75.00—you make nearly 100% profit on these big resale items now in such great demand.

OPEN CAB

We furnish this cab in open style without wind-shield, fore door or driver's roll-up curtains. This style of cab is illustrated above on the Gibraltar Express Body. The cabs are painted either green or yellow. Be sure to state on your order the color desired.

Stock No. 14113

29⁹⁵
Com-
plete
F. O. B.
Indiana
Factory
Net Wt.
180 lbs.

Pleased Customer—

J. S. Kessler & Son, of Waggoner, Illinois, writes under date of April 24th, 1917, that he received his commercial body in good shape and that "IT SURE IS WORTH THE MONEY".

SERVICE MOTOR SUPPLY CO. - CHICAGO, U. S. A.



"T" DRIVER



SOUTHERN NEVADA MODEL T CLUB
A CHARTER MEMBER OF THE M.T.E.C.A.

October 2024

