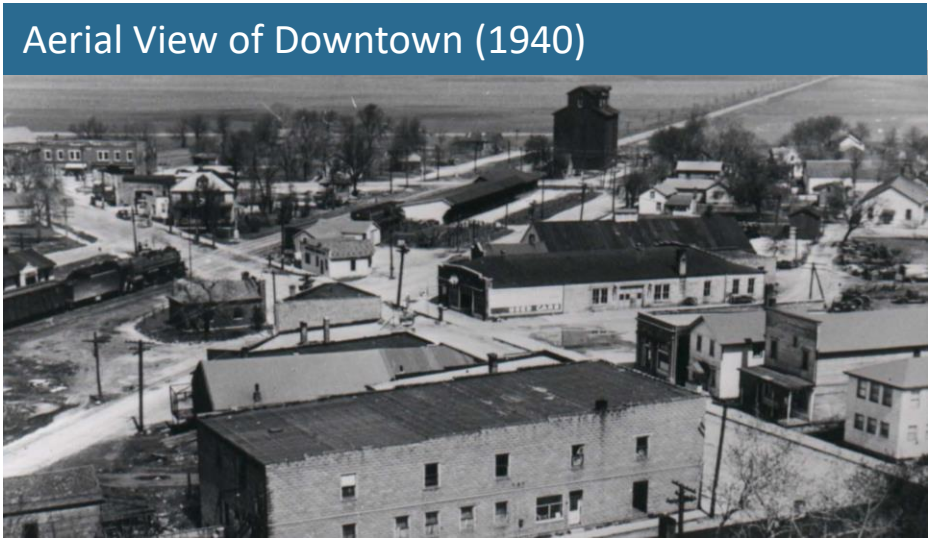
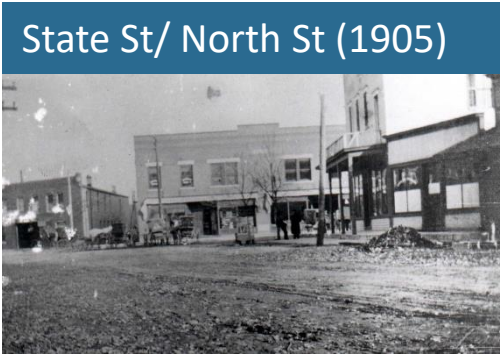
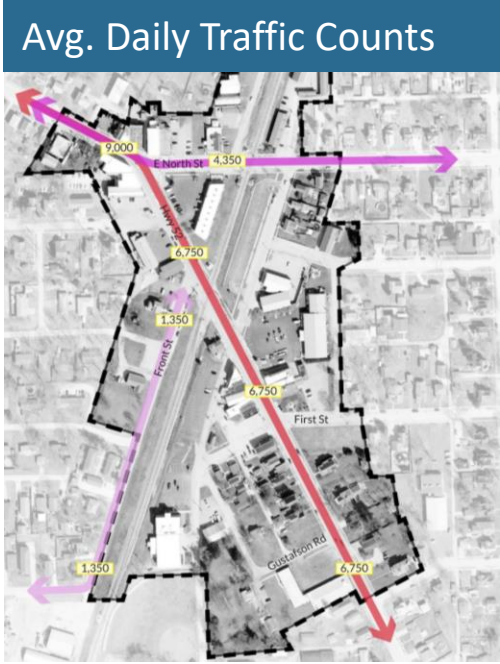
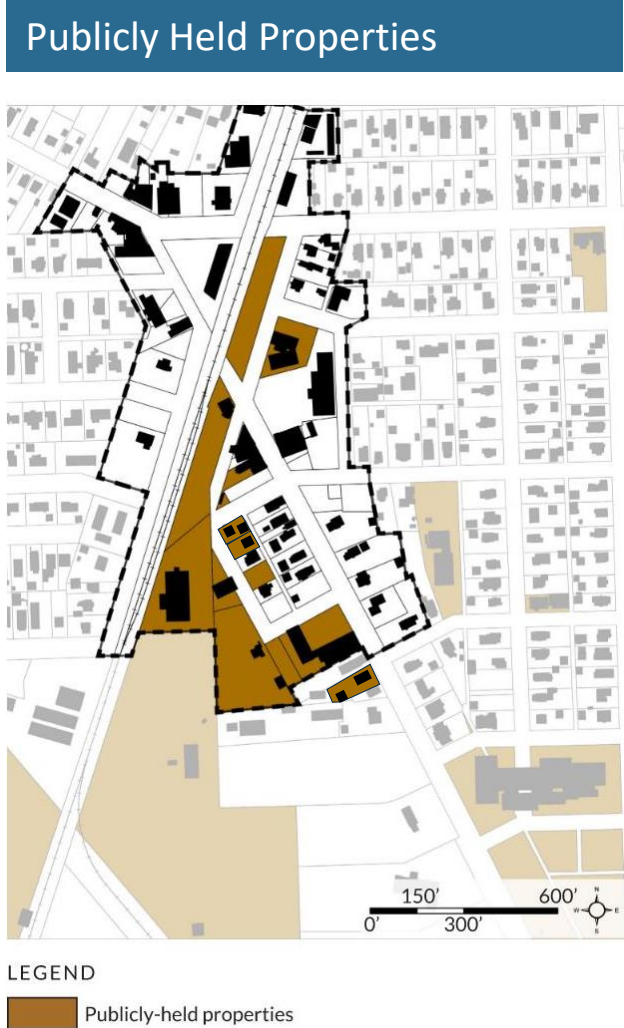


PROCESS + ANALYSIS



August 2022	<ul style="list-style-type: none">Business + Property Owners WorkshopPublic Agency Interviews (Library District, Park District, Township, Fire Protection District)
October 2022	<ul style="list-style-type: none">Village Trustee Engagement #1
December 2022	<ul style="list-style-type: none">Review Meeting #1 with Key Park District + Library District Staff
January 2023	<ul style="list-style-type: none">Meeting with Park District BoardMeeting with Library District Board
February 2023	<ul style="list-style-type: none">Village Trustee Engagement #2
March 2023	<ul style="list-style-type: none">Review Meeting #2 with Key Park District + Library District Staff
April 2023	<ul style="list-style-type: none">Review Meeting #3 with Key Park District + Library District Staff
June 2023	<ul style="list-style-type: none">Public Open House



STAKEHOLDER ENGAGEMENT

Key Stakeholder Feedback

- Maintain Village Charm
- Become More Pedestrian Friendly
- Attract More Diverse Business Mix
- Unique Places for Outdoor Activities
- Sidewalk Cafes / Outdoor Dining
- Calm Traffic along Highway 52
- Increase Downtown Residential Population
- Beautify Route 52
- Eliminate a Street West of Route 52

Overall Project Goals

Safety +
Beautification



Branding



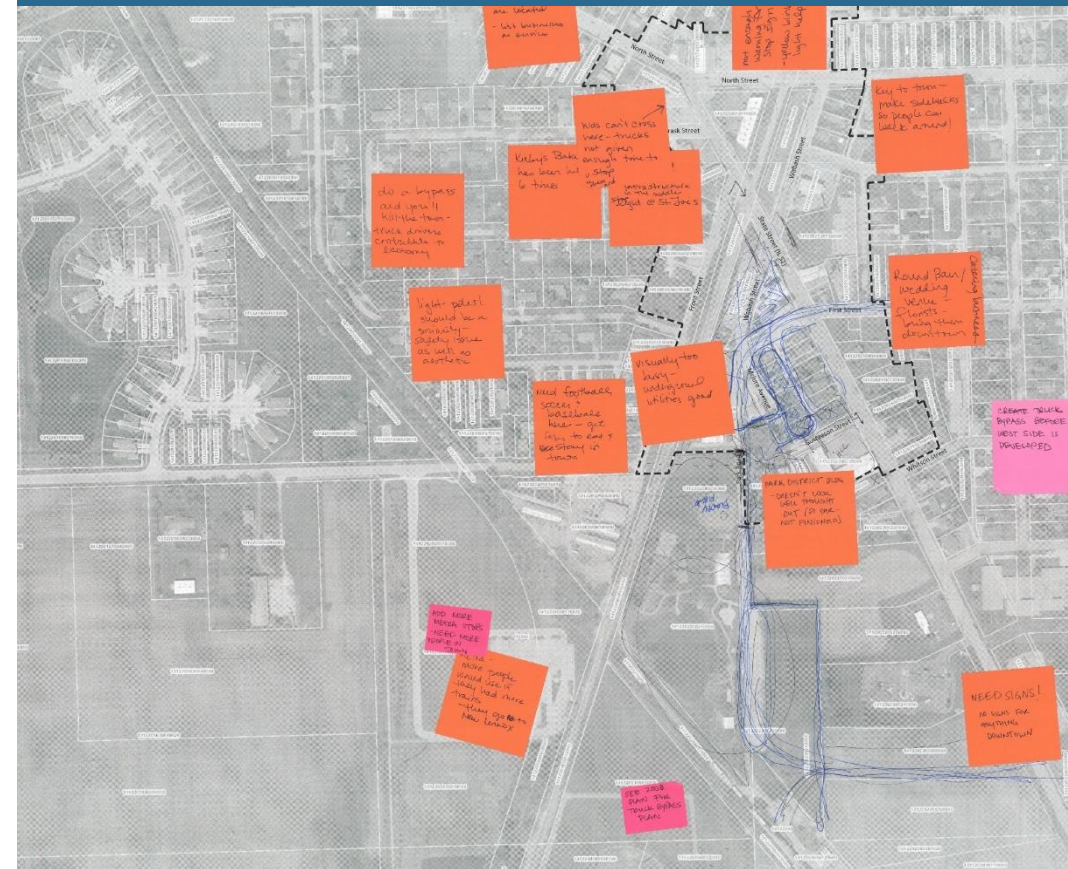
Community
Gathering
Places



Economic
Development



Business + Property Owners Comments



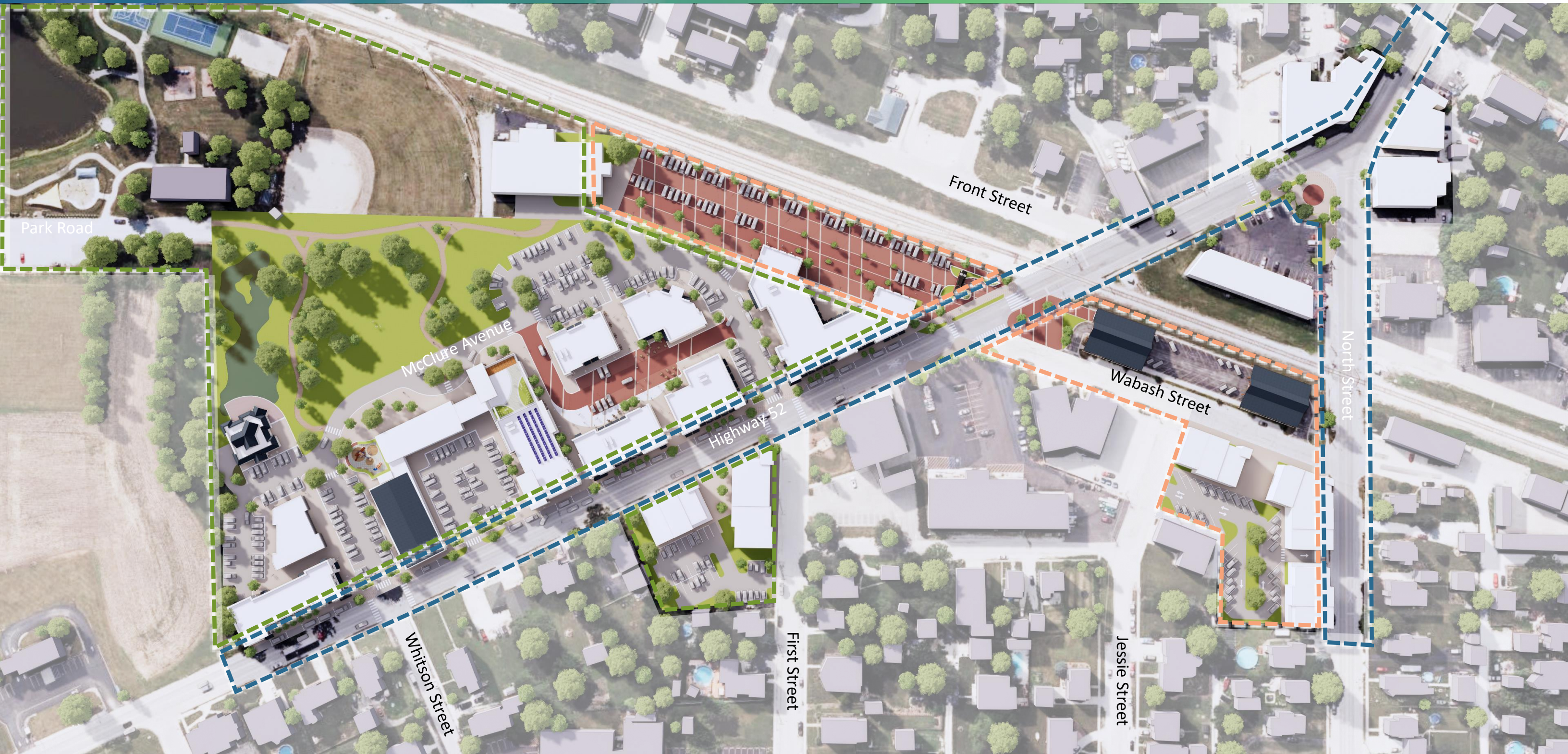
Business + Property Owners Workshop (August 2022)



Business + Property Owners Comments



MASTER PLAN



Streetscapes

Wabash Corridor

Gustafson Grove



STREETSCAPES – THE VISION

Safety

- Curb Extensions
- Pedestrian Friendly Accommodations
- Landscape + Amenities to Calm Traffic

Branding

- Midewin Prairie as Theming
- Coordinated Amenities with New Logo
- Festoon Lighting as Gateway

Gathering

- Benches + Seating Areas
- Tree Lined Sidewalks

Economics

- Sidewalk Cafes
- Plaza Spaces for Special Events



Legend:

- | | | | |
|-----------------------------------|--|------------------------------------|------------------------------------|
| A. Limestone Wall with Entry Sign | F. Sidewalk Café Space | K. Curb Extensions to Calm Traffic | P. Farmer's Market Plaza |
| B. Seating Plaza | G. Brick Accent 'Prairie Wave' Behind Back of Curb | L. Caboose Ice Cream Stand | Q. On-Street Parking |
| C. Seasonal Christmas Tree | H. Concrete Sidewalk | M. Curved Limestone Seat Walls | R. Drive Aisles |
| D. Overhead Festoon Lights | I. Screen Parking with Landscape | N. Prominent Pedestrian Crosswalks | S. Open Sided Covered Structure |
| E. Street Trees | J. Curbed Planters | O. Wabash Parking Plaza | T. Restoration of Historic Facades |

STREETSCAPES – THE DETAILS



Tree Lined Sidewalks



Site Furniture with Subtle Prairie Grass Design



Festoon Lighting at “100%” Intersection



Native Prairie Grasses, Flowers, & Shrubs



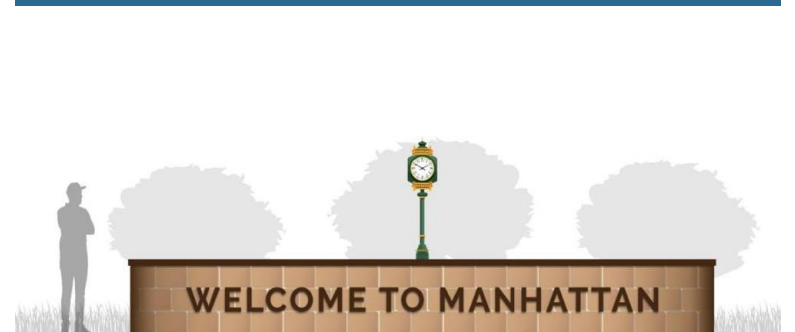
Prairie Themed Street Lights, Gateways, & Signage



Restoration of Historic Facades



Natural Stone Entry Sign



WABASH CORRIDOR – THE VISION



Safety

- Prominent Pedestrian Crosswalk to Link Together East + West Sides of 52
- Eliminate One Road West of 52

Branding

- Wabash Railroad as Theming
- Urban Landscaping + Site Amenities
- Festoon Lighting over Plazas

Gathering

- Numerous Seating + Gathering Spots
- Tree Lined Sidewalks + Plazas

Economics

- Relocated Caboose as Potential Ice Cream or Coffee Stand
- Programmable Spaces

Historic Wabash Railroad Depot



Aerial Perspective



Legend:

- | | | | |
|------------------------------------|-------------------------------|-------------------------------------|------------------------------------|
| A. Open Sided Covered Structure | E. Caboose Ice Cream Stand | I. On-Street Parking | M. Wide Sidewalks with Landscaping |
| B. Farmer's Market Plaza | F. Wabash Parking Plaza | J. Off-Street Parking | N. Fire Protection District |
| C. Curb Extensions to Calm Traffic | G. New Mixed-Use Development | K. Parking / Retail Plaza | O. Pedestrian Promenade |
| D. Prominent Pedestrian Crosswalks | H. Retail Plaza / Beer Garden | L. Outdoor Plazas Between Buildings | P. New Library Building |

WABASH CORRIDOR – INSPIRATIONS



Open Sided Covered Structure Over Ends of Public Parking Lot



Relocated Caboose



Accommodates Irish Fest Tent



Parking Plaza Open To Vehicular Traffic



Parking Plaza Closed to Vehicular Traffic for Special Events



WABASH CORRIDOR – PERSPECTIVES



Open Sided Covered Structure over Public Parking Lot (Looking Southwest)



Wabash Parking Plaza During Typical Business Day (Looking Southwest)



Wabash Parking Plaza During Special Event (Looking Northeast)



GUSTAFSON GROVE – THE VISION



Safety

- Extend Whitson Street to Link Together East + West Sides of 52 (Potential Future Traffic Signal)

Branding

- Urban Landscaping + Site Amenities
- Mixed Use

Gathering

- Improved Access to Central Park
- Sidewalk Cafes

Economics

- New Library as Development Anchor
- Residential Units Above Retail
- Leasable Ground Floor Retail



Legend:

A.

Gustafson Picnic Grove

B.

Park District Building

C.

New Library Building

D.

'Link'

E.

Rooftop Terrace Overlooking Park

F.

Park District Tot-Lot

G.

Destination Restaurant

H.

Rainwater Management Facility

I.

Douglas M. Blatti Memorial Baseball Diamond

J.

Multi-Purpose Trailway

K.

Existing Central Park Facilities

L.

Wide Sidewalks with Landscaping

M.

On-Street Parking

N.

Off-Street Parking

O.

Whitson Street Extension

P.

Parking / Retail Plaza

Q.

Wabash Parking Plaza

R.

Fire Protection District

S.

New Mixed-Use Development

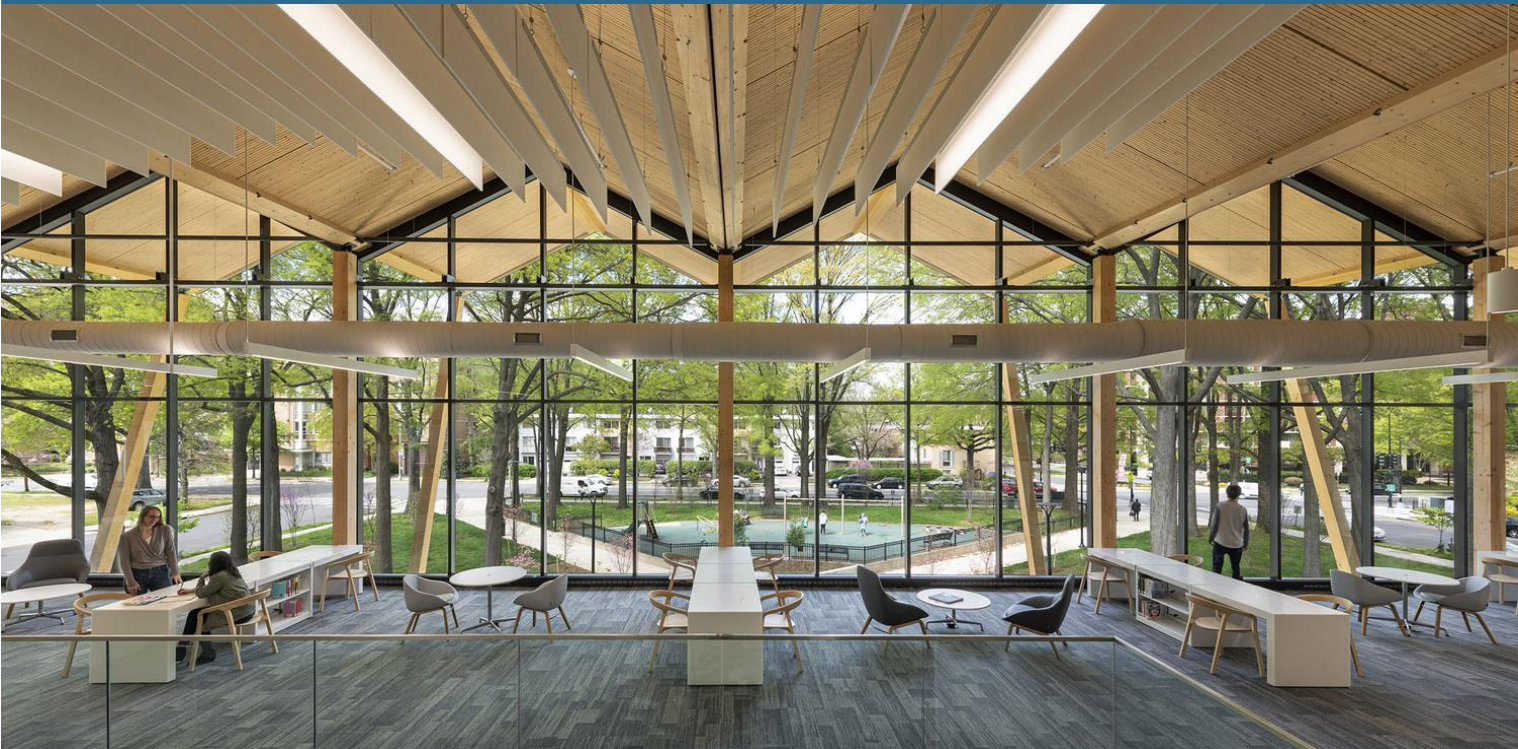
GUSTAFSON GROVE – INSPIRATIONS



Mixed-Use Development Along Route 52



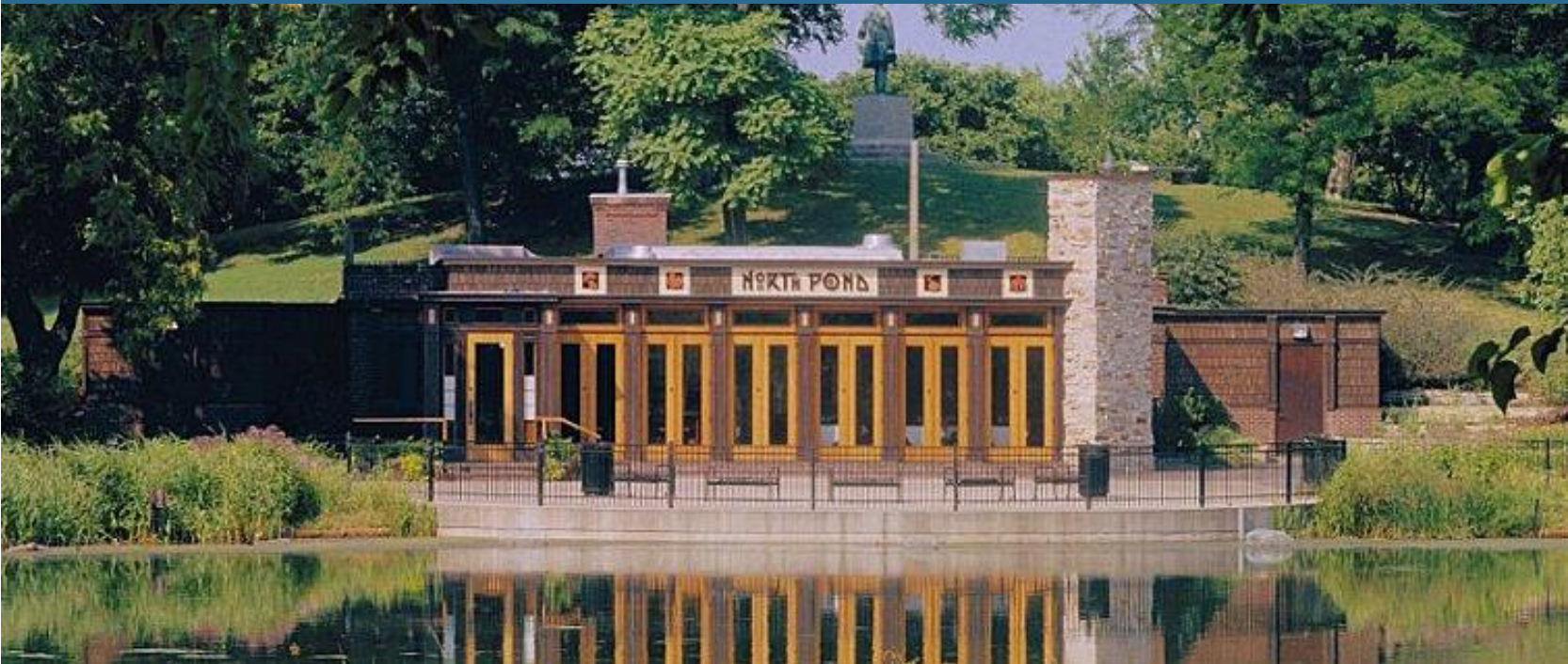
Link Connection Between Library and Park District Buildings



Parking Plaza Behind Mixed-Use Buildings



Destination Restaurant Overlooking Pond



GUSTAFSON GROVE – PERSPECTIVES



Library Overlooking Gustafson Grove



Route 52 Public Library Entrance



Parking Plaza / North Entry to Library



New Mixed-Use Development Along Route 52

