

Earth Source Limited

Wexford Zinc Project

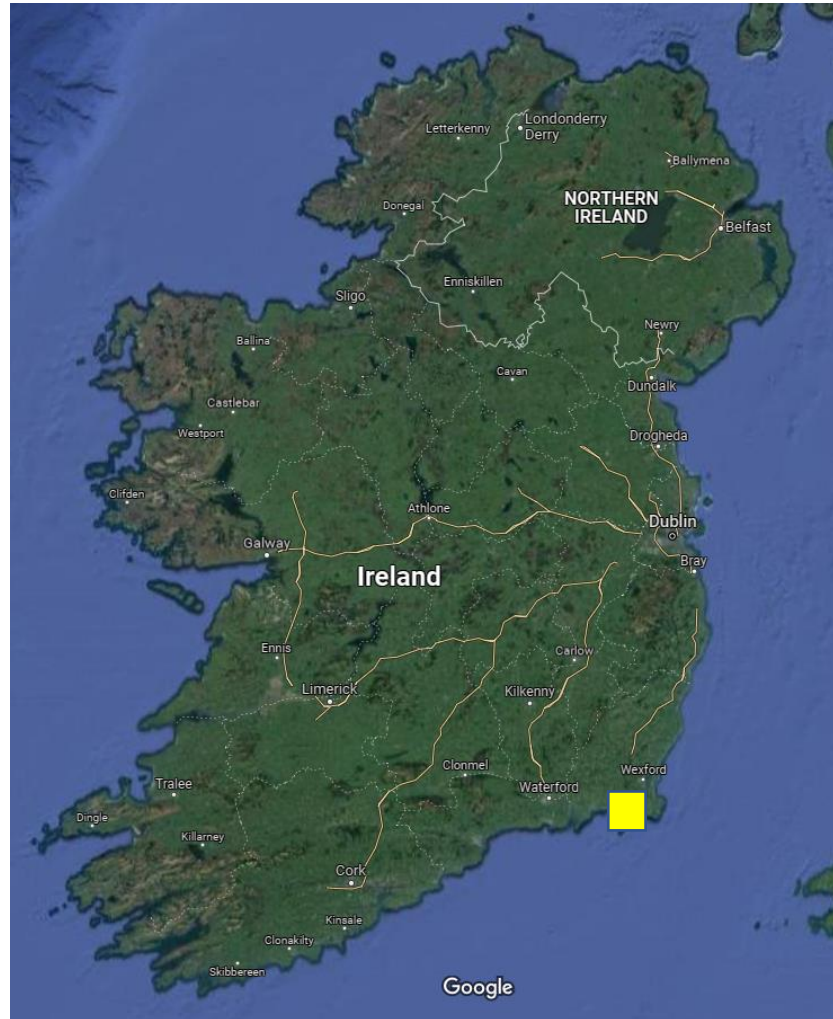
Republic of Ireland



Critical Metal Exploration & Mining

Duncormick Zinc - Wexford

Location : South East
Ireland



Local Area

Geography:

Mostly flat and rolling farmland.
Low-lying area below 100 meters in elevation.
Notable high grounds: Mountains of Forth and hill of Carrickbyrne.

Water Features:

The Bridgetown Canal runs over the deposit
No large lakes.

Transport Proximity:

Rosslare Harbour (export hub) - 20 km.
Wexford Town - 20 km.

Infrastructure:

Easy access, existing infrastructure.
Local wind turbines for energy.



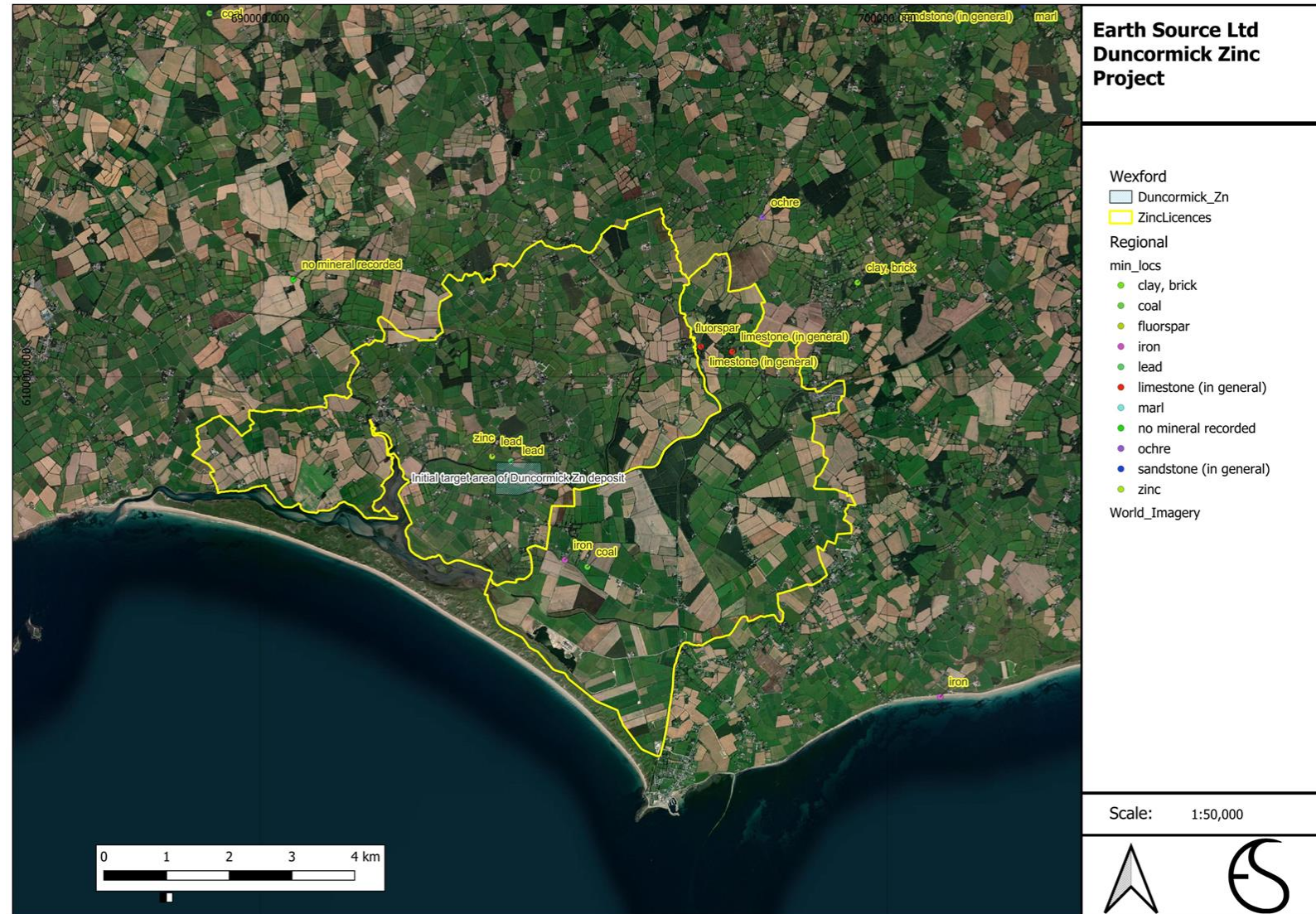
Zinc Project Overview

- ESL were awarded two Prospecting Licences by the GSRO in 2024
- Current Status: Drill planning, data compilation and permissions
- Objective: Develop project to NI-43-101 standard indicated/measured resource



Prospecting Licences

- PL3237
&
PL3484
- Approx
45km²



Previous Work on Duncormick

Initial Observations:

1850s: Minor occurrences of baryte and galena in the area south of Wexford, and of galena and "grey copper ore" near Duncormick recorded by the original geological survey.

Early Exploration:

1965-1985: Licenses issued to Société Minière et Métallurgique de Penarroya and later to Anglo-United Development Corporation

Activities: Soil sampling (3,685 samples), geophysical surveys (60.5 miles), drilling (37 boreholes, 24,550 ft)

Findings:

Disseminated sulphide mineralization

Grades up to 6% combined Zn and Pb over 7 meters and estimated 3 million tonnes

Later Work:

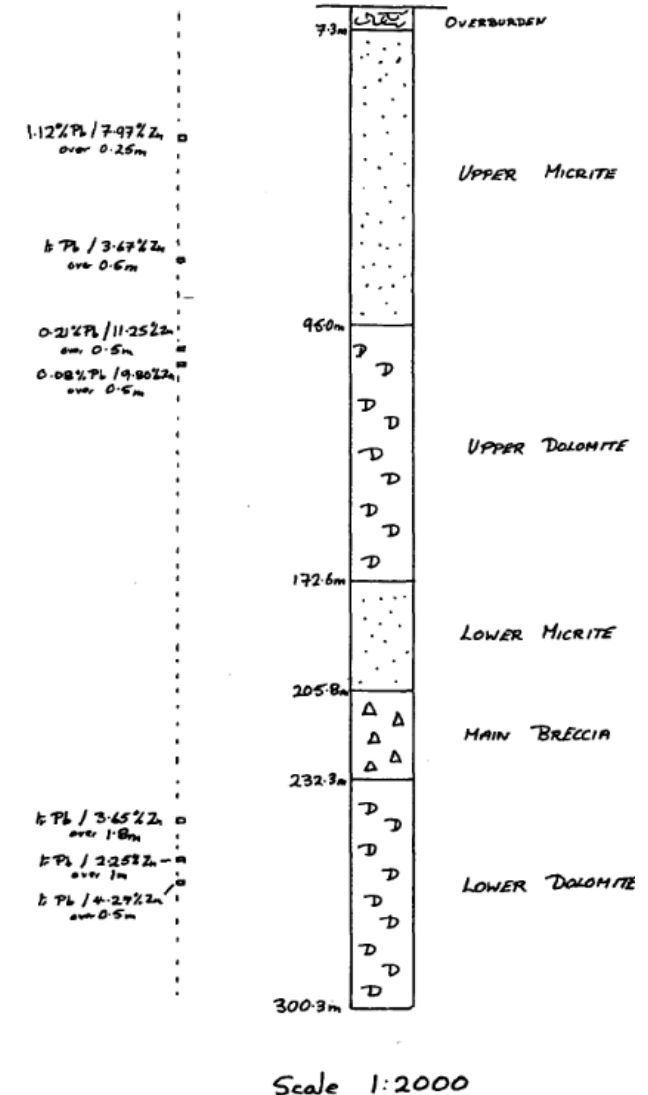
1988-1992: Chevron Mineral Corporation reissued licenses

Continued geochemical and geophysical surveys, additional drilling (52 drillholes)

Current Status:

Previous operators based in Australia dropped the project during the COVID-19 pandemic in 2020

Now held by ESL



Duncormick Project - Geology Overview

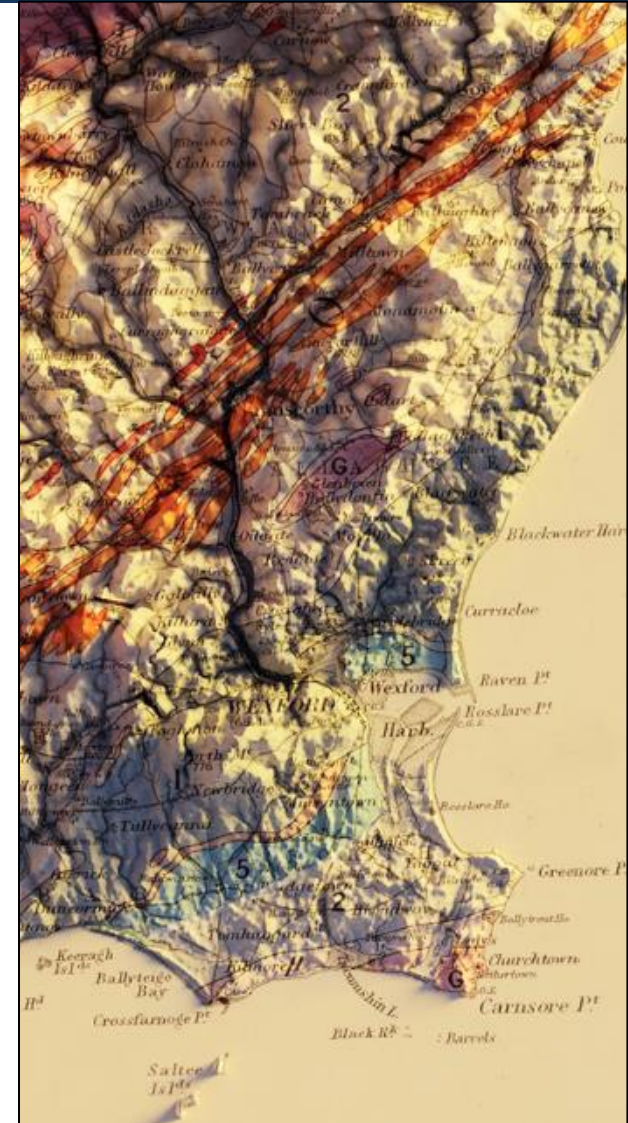
Deposit Type: Irish Type/Mississippi Valley-Type (MVT) deposit

Mineralization: Zinc (Zn) and Lead (Pb) dominant
Associated minerals: Sphalerite, Galena
Found within two lithological units, the Upper Dolomite and the Lower Dolomite

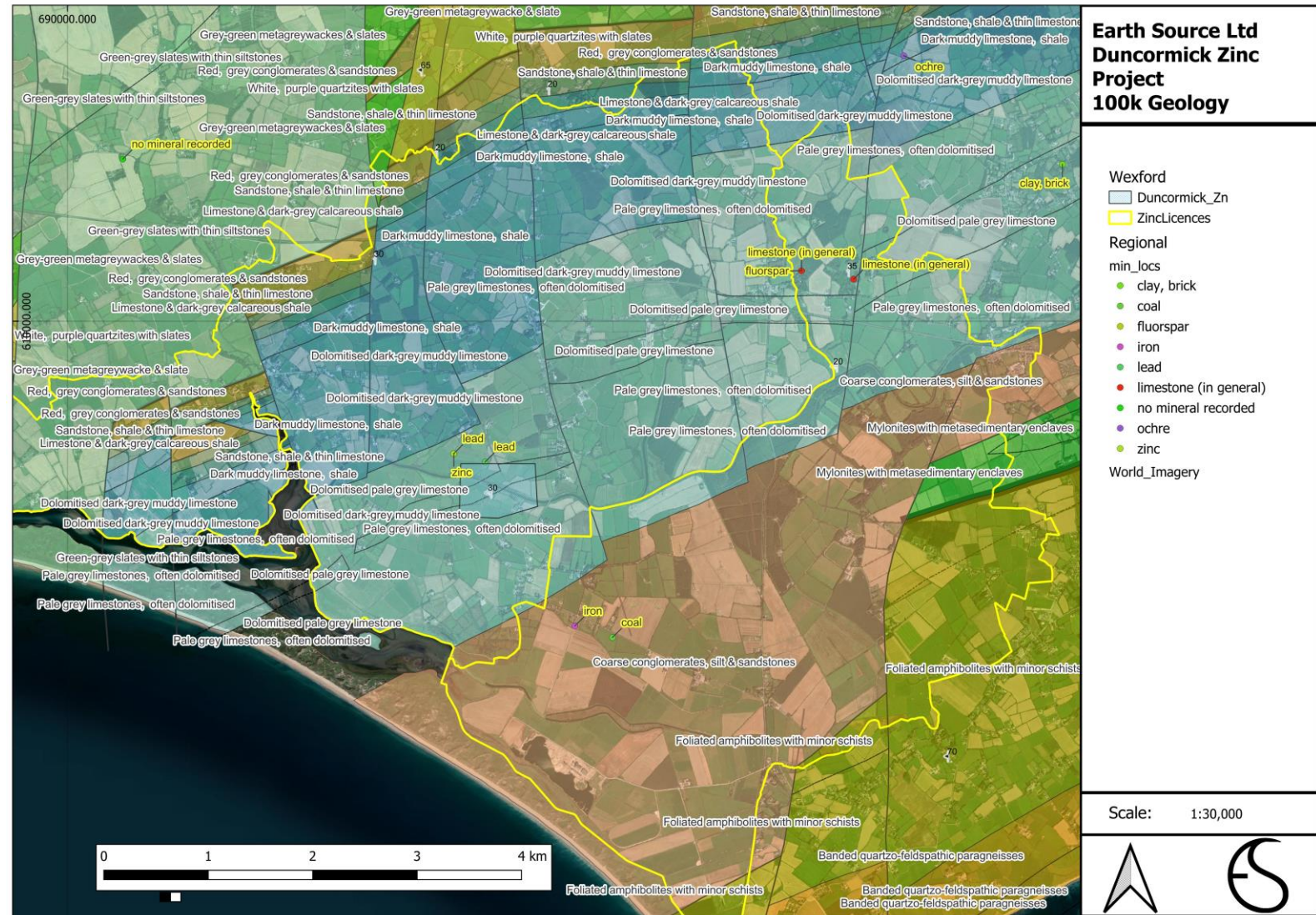
Geological Setting: Hosted in carbonate rocks
Gentle dip of approx 20° to the south-southeast

Exploration Insights: Potential for significant zinc-lead resources
Historical data indicates high-grade mineralization

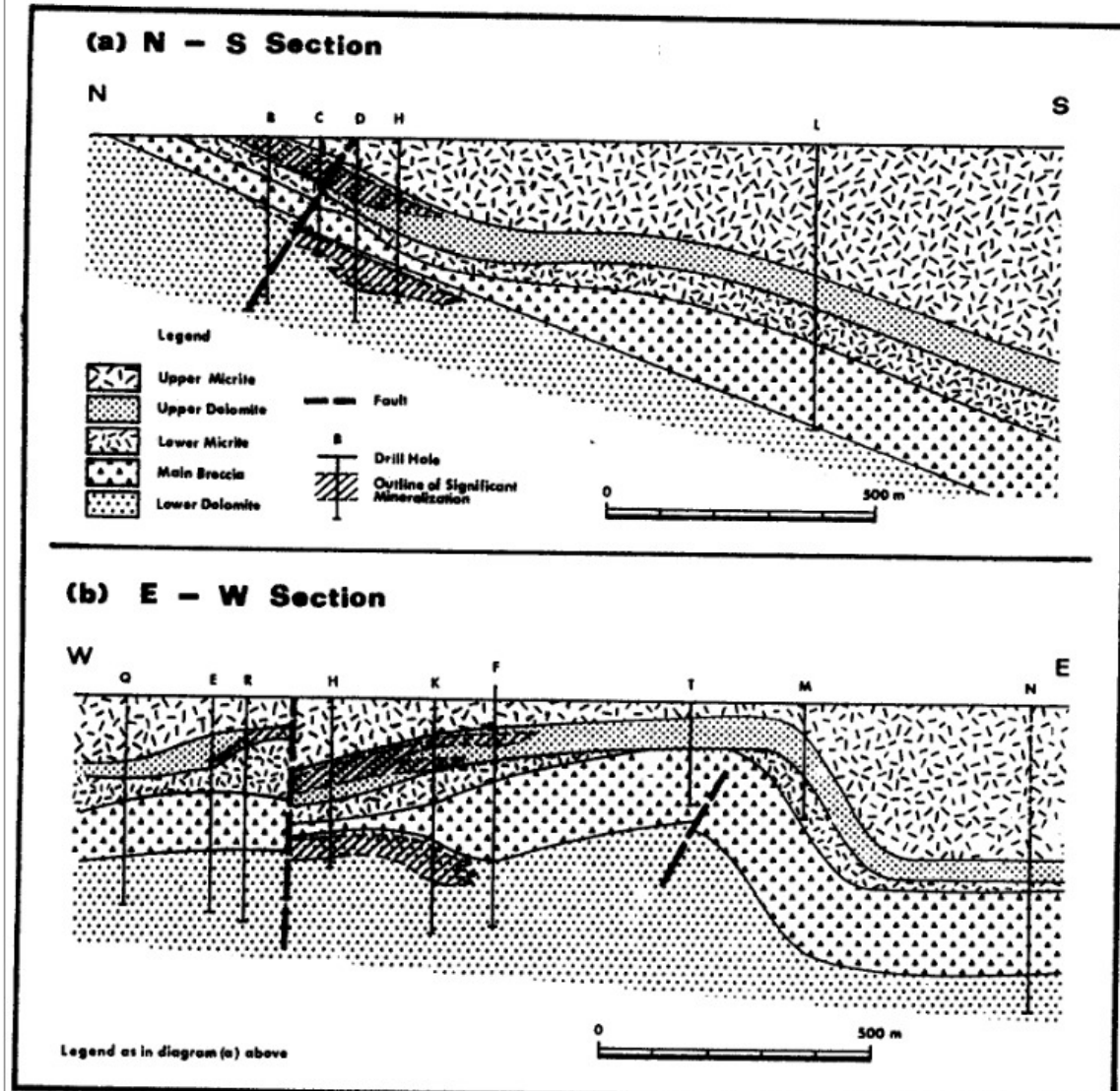
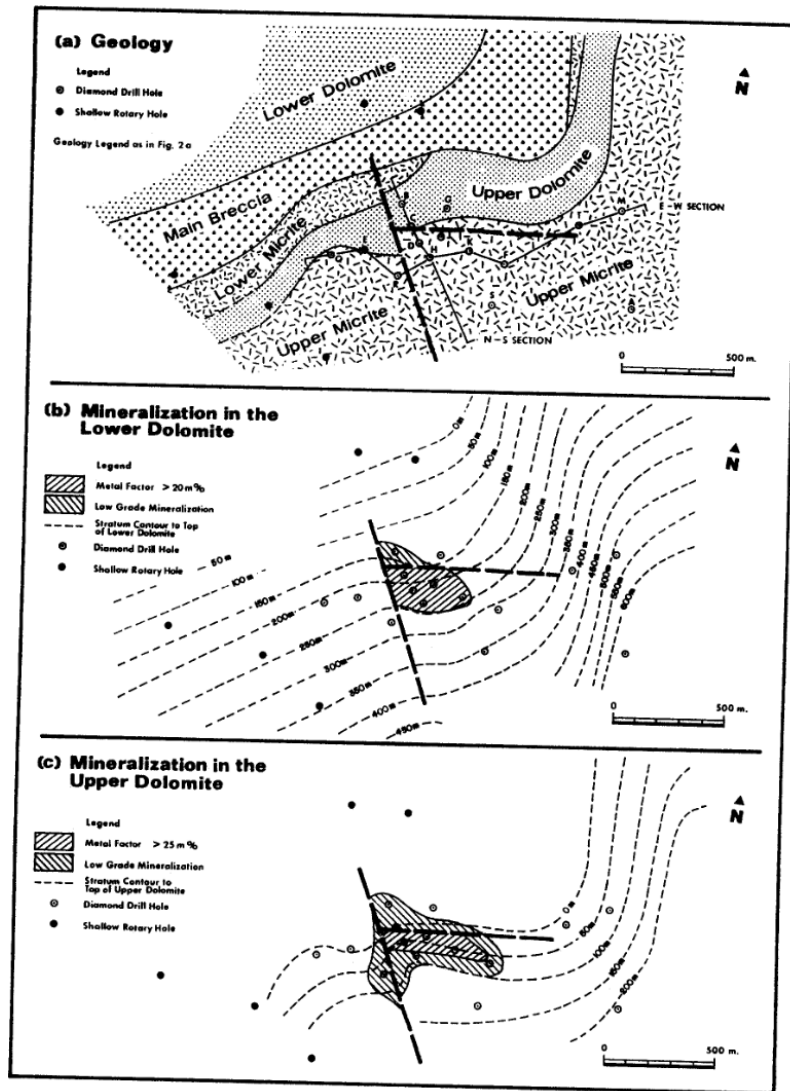
Comparison: Similar to other Irish deposits like Lisheen and Navan
Typically, silver (Ag) found as a by-product



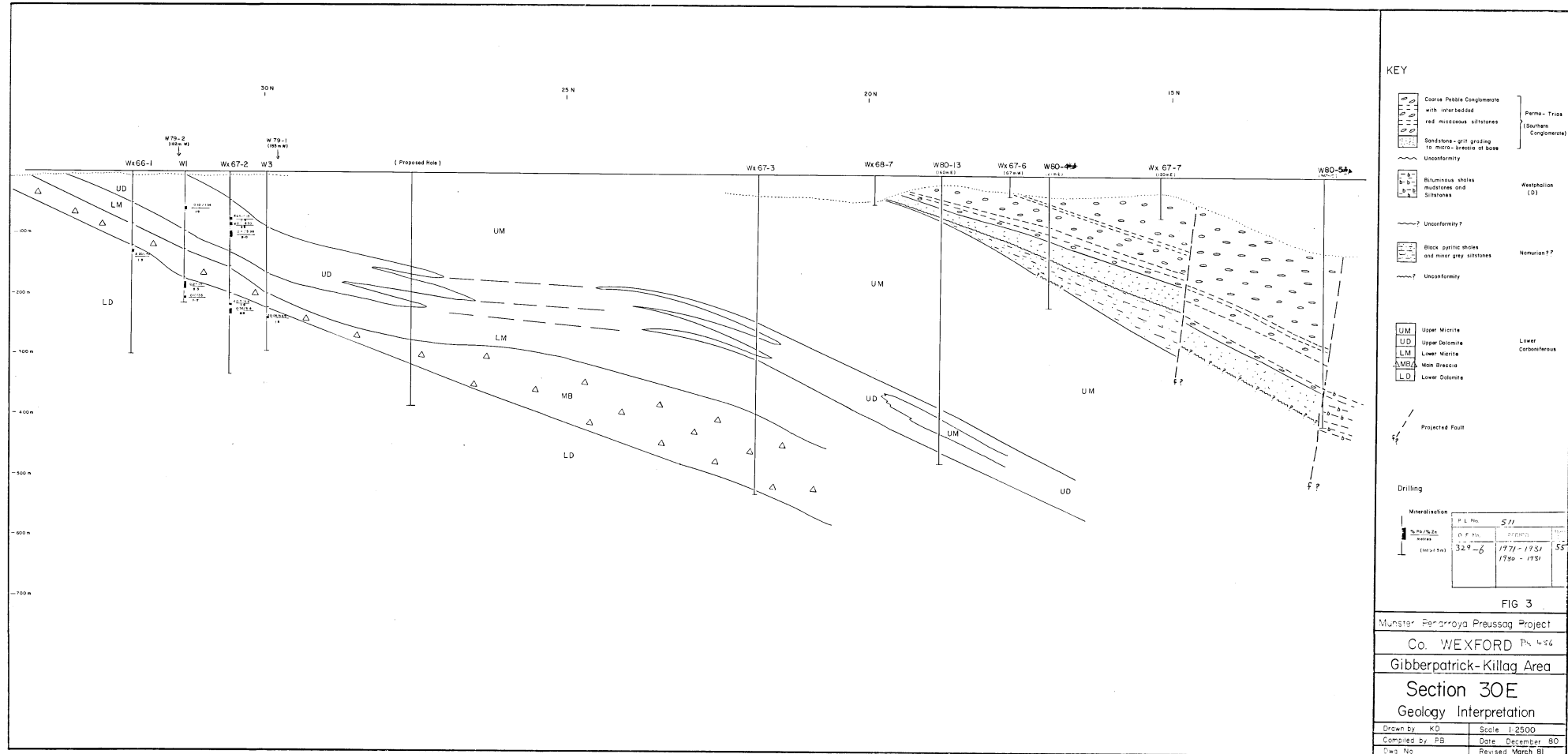
Geological Setting



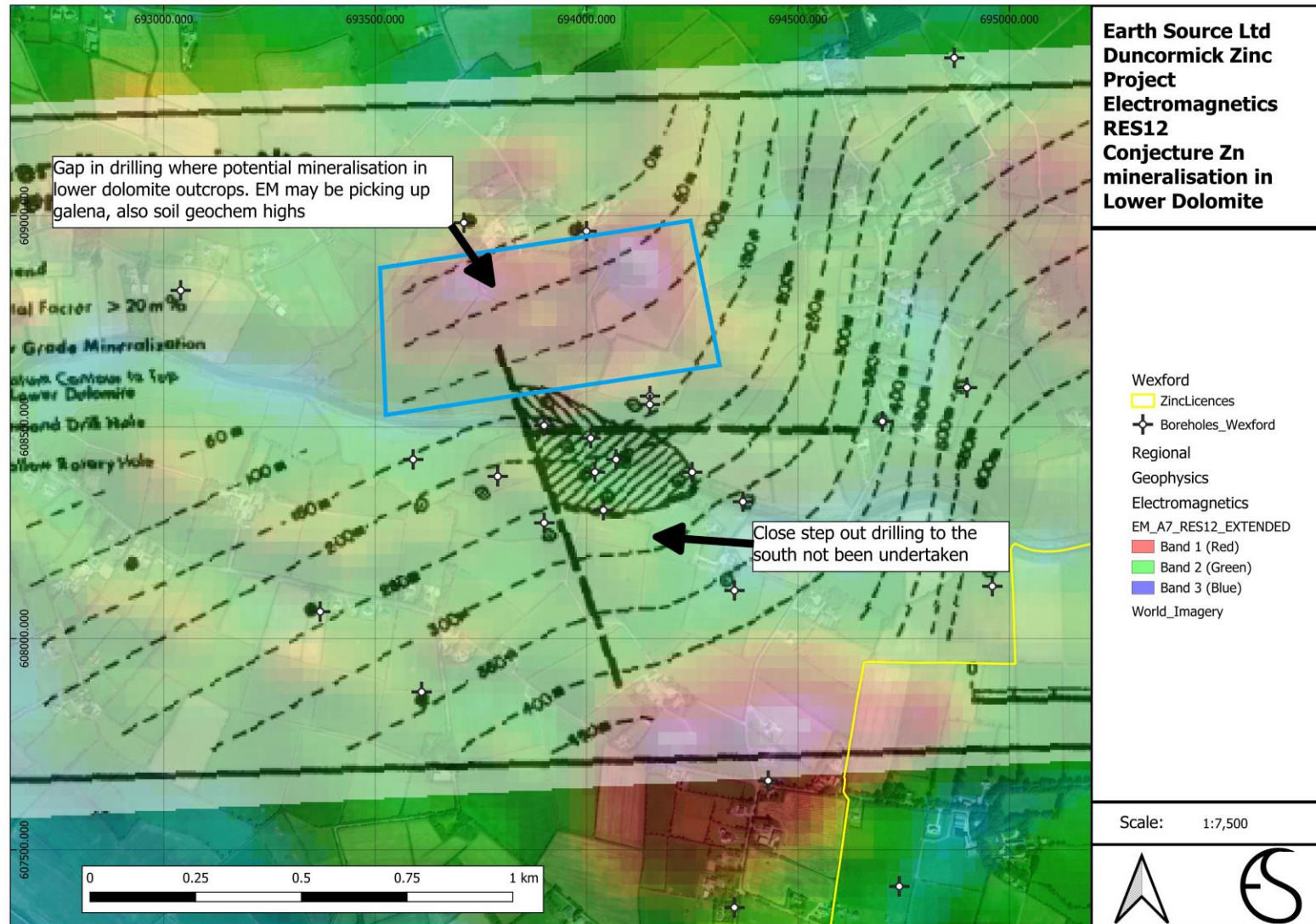
Historic Ore body sections



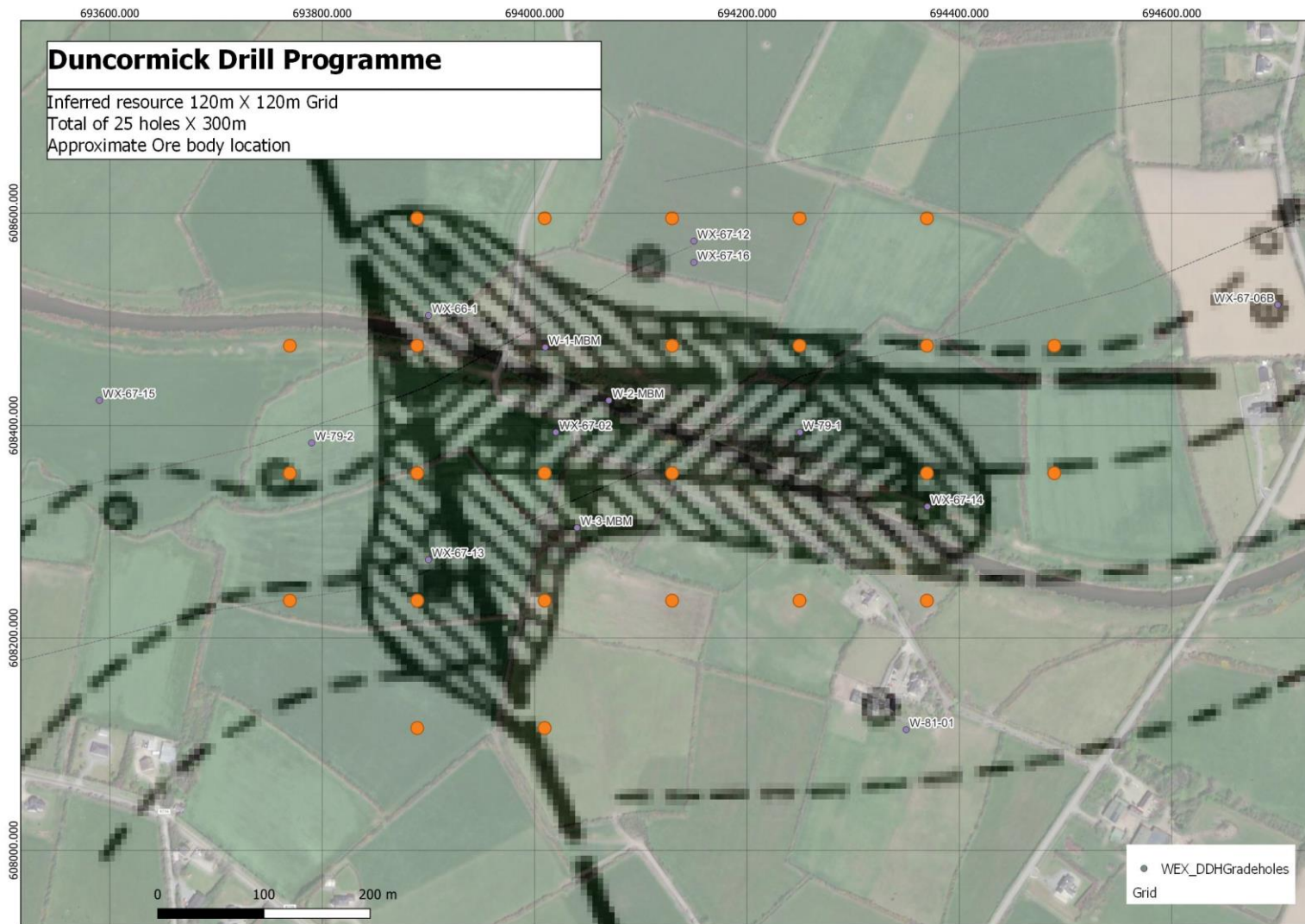
Cross Section of Duncormick



Targets



Provisional drill grid



Work Programme

- Access agreements
- Implement drilling proposal to confirm historic grades
- Metallurgy sampling and analysis
- Inferred Resource Drilling
- Explore site specific mining methodologies
- Stakeholder engagement & preliminary EIA checks
- Development economics



Founders & Innovators

Terry Nutkins

Earth Scientist, Exploration Geologist
& Business Manager

Over 10 years experience in mineral exploration, held the post of exploration manager for GreenOre Gold and works as a consultant geologist with several domestic and global companies. He has been a part of several underdeveloped discoveries of precious and critical metals.

Calum Dunn

Earth Scientist, Exploration
Geologist & Engineer

Geologist consulting on several UK, Irish and Scandinavian projects. With a diverse background in precious and critical metals exploration. Previous experience in building and running companies. Wide Geoenvironmental/ Geotechnical engineering and mine remediation experience.



Founders & Innovators

Mike Burdon

Business Developer
Chemical Engineer

Since graduating in 1979 with a First Class Honours Degree in Chemical Engineering from Newcastle University, Mike has held a variety of technical, commercial and business development roles in the Natural Resources Sector including British Gas and BHP. Mike has worked extensively in the UK and abroad and is now focused on renewable energy, sustainability and resource independence.

Mark Marshall

Commercial Negotiator
Lawyer

Mark graduated in law from Durham University in 1981 and then qualified as a commercial solicitor. He subsequently spent 25 years in the oil and gas industry, working for Chevron and British Gas amongst others, across all continents. Mark's role was as both a lawyer and commercial negotiator, specializing in creative deal-making. Mark has more recently been working to promote large-scale tidal power generation projects.



Disclaimer

All materials in this presentation, unless specifically indicated otherwise, is under copyright and proprietary to Earth Source Limited. Information contained herein, including projections, has been obtained from materials and sources believed to be reliable at the date of publication. While we do not doubt its accuracy, we have not verified it and make no guarantee, warranty or representation about it. Readers are responsible for independently assessing the relevance, accuracy, completeness and currency of the information of this presentation. This presentation is for information purposes only, exclusively for Earth Source Limited clients and professionals and is not to be used or considered as an offer to sell or buy or subscribe for securities or other financial instruments. All rights to the material are reserved and none of the material, nor its content, nor any copy of it, may be altered in any way, transmitted to, copied or distributed to any other party without prior express permission of Earth Source Limited. Any unauthorized publication or redistribution of Earth Source Limited research is prohibited. Earth Source Limited will not be liable for any loss, damage, cost or expense incurred or arising by reason of and person using or relying on information in this presentation. Some of the areas highlighted in the presentation are still in the application phase, with no certainty that these applications will be approved by the relevant government authorities. Similarly, for landowner agreements, securing permissions and rights can be equally uncertain and complex. There is no assurance that exploration of these areas — or any future areas that might be acquired — will lead to the discovery of a commercially viable mineral deposit. Moreover, even the identification of a promising deposit does not guarantee that it can be mined profitably. Both scenarios involve considerable risk and require careful consideration.

