

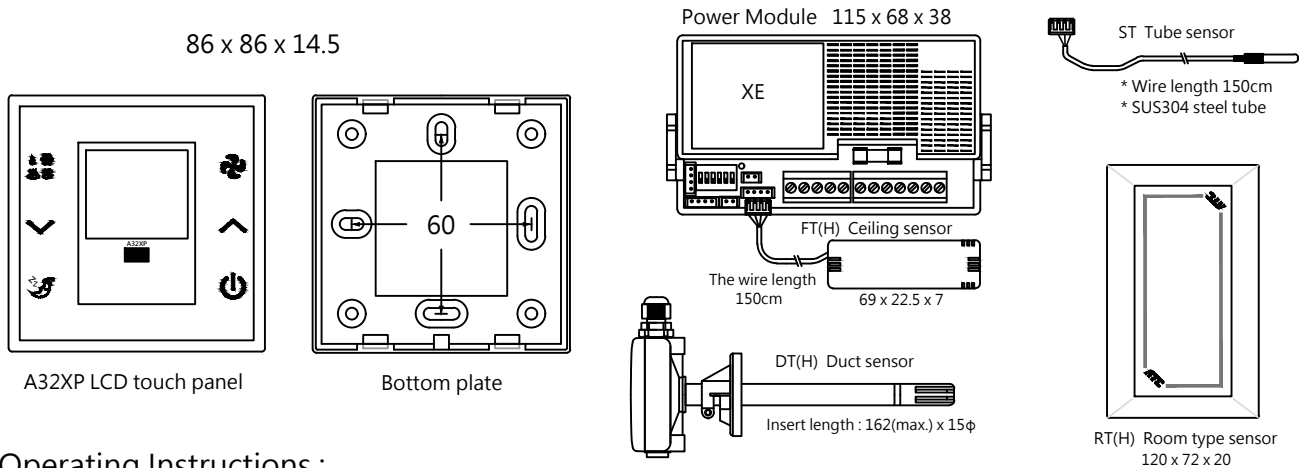
# A32XP LCD Digital Thermostat

## ● Features :

- Standard European size.
- Adjustable lighting level LCD screen.
- Intuition graphic touch keys.
- 0.1°C Temperature accuracy.
- Smart progressive speed up/down keys.
- The LCD panel auto fits 1 or 3 section or modulating controllers.
- Fusion 3 speed fast & 20 speed fine-tuning for the XE model.
- Outfit RS-485 port operated by the MODBUS RTU open protocol.
- Optional humidity sensor for temperature and humidity control.



## ● Dimensions : (L x W x H) unit mm



## ● Operating Instructions :

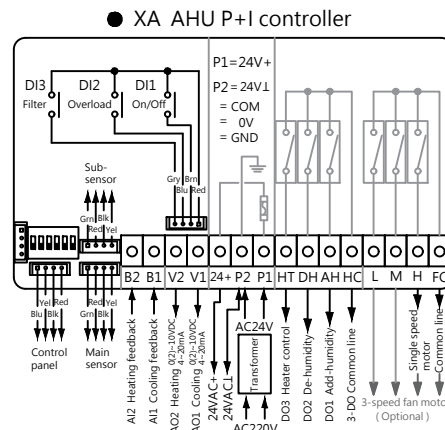
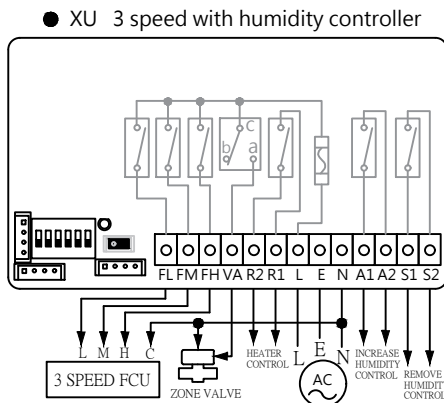
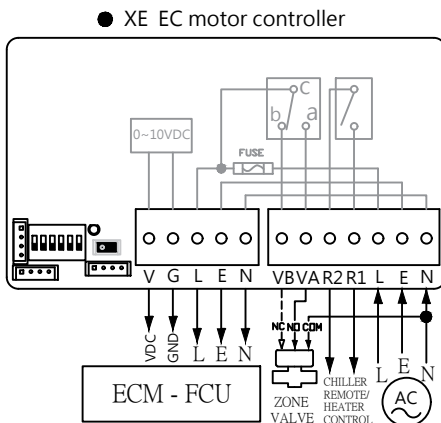
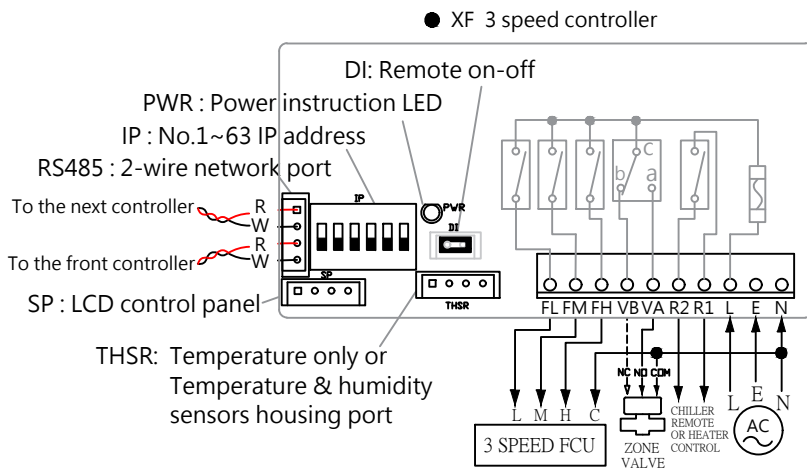
Power ON/OFF	● Touch the  key once will start or stop the air-conditioning operating.
Temp. adjust	● Touch the  key to raises 0.1°C or the  key to reduce 0.1°C, Keep touch the  key to raises or the  key to reduce 0.1°C quickly.
Back-light mode	● Keep touch the  &  key till the beeper sound will change the back-light mode into the lighting 12 seconds mode, Once again will back to the on-bright/off-dark mode.
Fan speed	<p>● Touch the  key once to select fan speed as following order : Auto  &gt; High  &gt; Middle  &gt; Low  &gt; Auto  circling.</p> <p>★ When into the fan select mode, once touch the  key to raise 1 section till speed 20 (maximum) or the  key to reduce 1 section till speed 1 (minimum), this function only for some controllers with 20 speed.</p> <p>★ Some of the air-conditioning system may not allow into some inappropriate speed.</p>
Mode select	<p>● Touch the  key will change the operating mode as following order : Cool  &gt; humidity  &gt; Fan only  (&gt; Heat  (&gt; Auto  )&gt; Cool  circling.</p> <p>★ If the humidity sensor was equipped, the screen can show and set the humidity level from 20%~90% in the humidity mode, If doesn't, the "Hd" will shown on the screen.</p> <p>★ If the panel connected with the cool/heat controller, it will be allowed to select heat mode, connecting with the 4-pipe controller will be allowed to select auto mode.</p>
Timer on/off	● Touch the  &  key when power-on will into the timer-off mode, touch the  &  key when power-off will into the timer-on mode, use the  &  key to input or modify the hours, it must be touch the  &  key once again to start the timer.
Sleep mode	<p>● Touch the  key while cooling mode will enable the sleeping mode , The setting temperature will rise 1°C after half hour and rise 1°C again after one hour.</p> <p>★ Keep touch the  key over 5 second when the A/C is power-on will into the back-light brightness adjust mode, Touch the  &amp;  key to select most favorite brightness.</p>
Lock & Unlock	● Keep touch the  key until the lock sign  appear will lock up all of keys except the  key, Repeat once till the lock sign disappear will unlock the keys.

★ The difference of the display and setting degree effected by the air-conditioner's ability or the change of loading , There is no any guarantee to whether the same value or the tolerance degree about this thermostat.

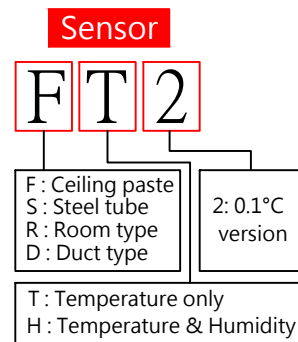
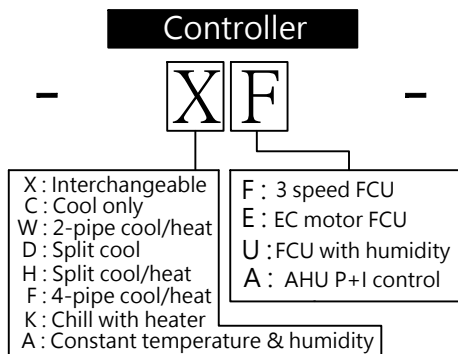
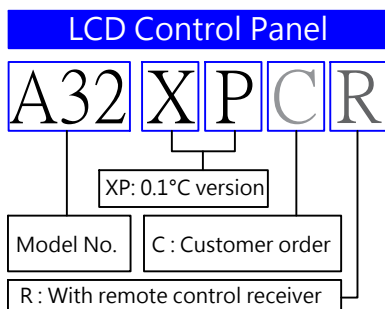
① Wiring diagram :

# NOTICE

- ✱ The sensor must be position in the return air path, Never put into the drain plate or close to the coil / motor / vent air positions etc.
- ✱ Remove the unused wire connectors, But the DI must be keep it on for actuate the power on/off.
- ✱ No need to set IP if the RS485 unused, Implement the power reset when changed the IP address.
- ✱ The RS-485 cable must be used UL2464 AWG22 x2C shield cable according with " one-in & one-out " rule connecting with all of the devices, Never set any branch in the halfway.
- ✱ When control with the direct expense split A/C, Chose the DX controller, Use VA for the outdoor unit & R1/R2 to control with the 4-way valve.



● How to order:



### ● Technical Specifications :

Input power	AC 90~240V, 50/60Hz general ; AC24V(XA only)	Support fan motor	3-speed motor ( XF ) / EC motor ( XE )
Display type	LCD with LED back-light screen	RPM control ( XE )	0~10VDC correspond 0~1200 RPM
Operation key	Graphic CVD touch key	Air volume control	3 speed (XF) / 3 & 20 speed (XE) auto/manual
Control panel	European size 86x86 mm	Communication wire	Panel vs controller: 0.5mm <sup>2</sup> x 4C; longest 100 meters
Temp. set range	5.0~35.0 °C (Original) -50.0~120.0 °C (Max.)	RS485 protocol	Modbus RTU 9600 or 19200 bps N,8,1
Temp. resolution	0.1 °C	Remote control	Infrared receiver ( Fit for R30RC )
Temp. detect range	-55.0~125.0 °C	Humidity sensor	Integrated circuit module
Operation mode	Cool / Humidity / Fan only ( / Heat )( / Auto )	Humidity set range	20 ~ 90 %
Protect class	Control panel: IP53 Tube type sensor: IP65	Humidity detect range	20 ~ 90 %
Output capability	3-speed : 5A/220VAC ; Valve / Chiller : 3A/220VAC	Humidity resolution	1 %
Temp. sensor	Digital thermometer	* These items in the red frame are the optional accessories.	
		* The specifications maybe changed without notice. 2025.03.V1	

\* The specifications maybe changed without notice.

\* The specifications maybe changed without notice. 2025.03 V1.5