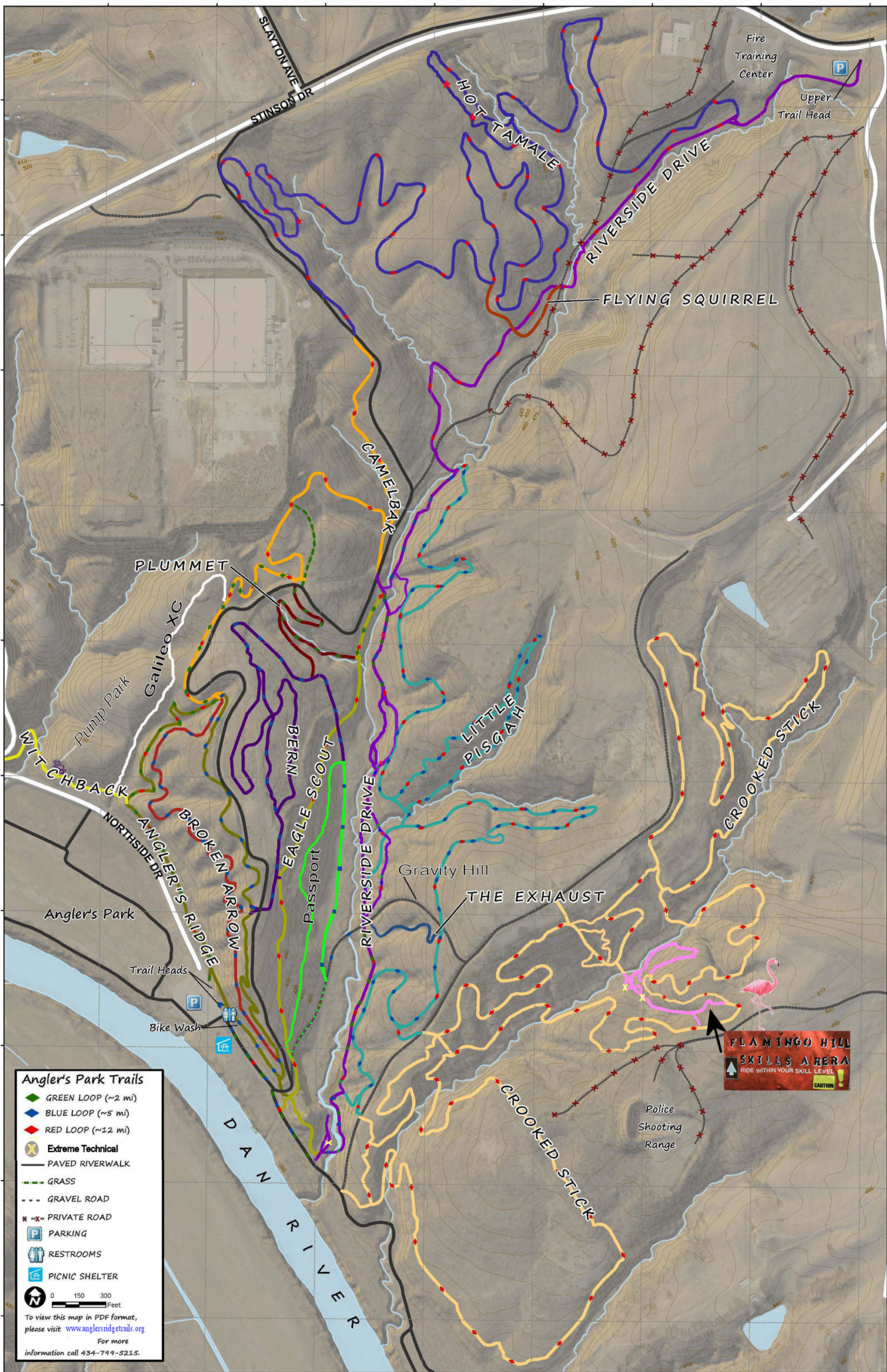


79°21'30"W 79°21'22"W 79°21'15"W 79°21'7"W 79°21'0"W 79°20'53"W 79°20'45"W 79°20'38"W

36°34'23"N  
36°34'15"N  
36°34'18"N  
36°34'0"N  
36°33'52"N  
36°33'45"N  
36°33'38"N  
36°33'30"N  
36°33'22"N  
36°33'15"N

36°34'23"N  
36°34'15"N  
36°34'18"N  
36°34'0"N  
36°33'52"N  
36°33'45"N  
36°33'38"N  
36°33'30"N  
36°33'22"N  
36°33'15"N



**Angler's Park Trails**

- GREEN LOOP (~2 mi)
- BLUE LOOP (~5 mi)
- RED LOOP (~12 mi)
- X Extreme Technical
- PAVED RIVERWALK
- GRASS
- GRAVEL ROAD
- X PRIVATE ROAD
- P PARKING
- R RESTROOMS
- FS PICNIC SHELTER

0 150 300 Feet

To view this map in PDF format, please visit [www.anglersridgetrails.org](http://www.anglersridgetrails.org)

For more information call 434-799-5215.

**FLAMINGO HILL**  
**SKILLS AREA**  
 RIDE WITHIN YOUR SKILL LEVEL  
 CAUTION

79°21'30"W 79°21'22"W 79°21'15"W 79°21'7"W 79°21'0"W 79°20'53"W 79°20'45"W 79°20'38"W