



**KSI LISIMS LNG**

# **Natural Gas Liquefaction and Marine Terminal Project**

# A Unique Collaboration



Nisga'a Lisims Government



**Experienced  
LNG Development  
Team**



**Partnership of Canadian  
Natural Gas Producers**

**Modern Treaty Nation**

# Project Overview

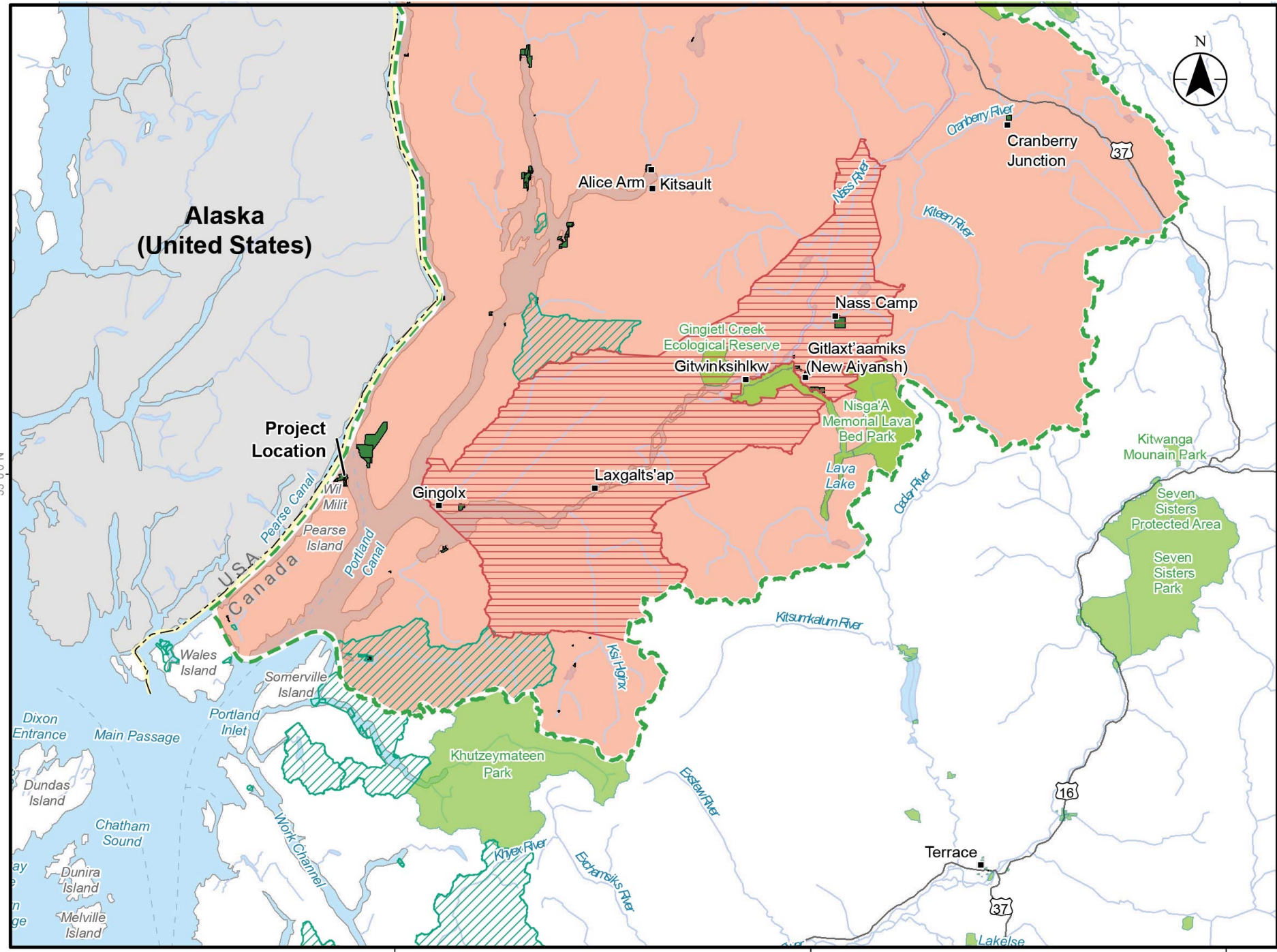


- Three proponents - the Nisga'a Nation, Rockies LNG and Western LNG – are working together to design and operate the Project in a way that is consistent with the Nisga'a Nation's commitment to stewardship of the land and its people
- Ksi Lisims LNG is a proposed 12-million-tonne-per-year liquefied natural gas (LNG) project
- Located at Wil Milit on the northern tip of Pearse Island near the Nisga'a village of Gingolx
- Site was selected by the Nisga'a based on safety criteria, low environmental risks and access to nearby shipping routes

**Alaska  
(United States)**



**Project  
Location**



130°00'W

129°00'W

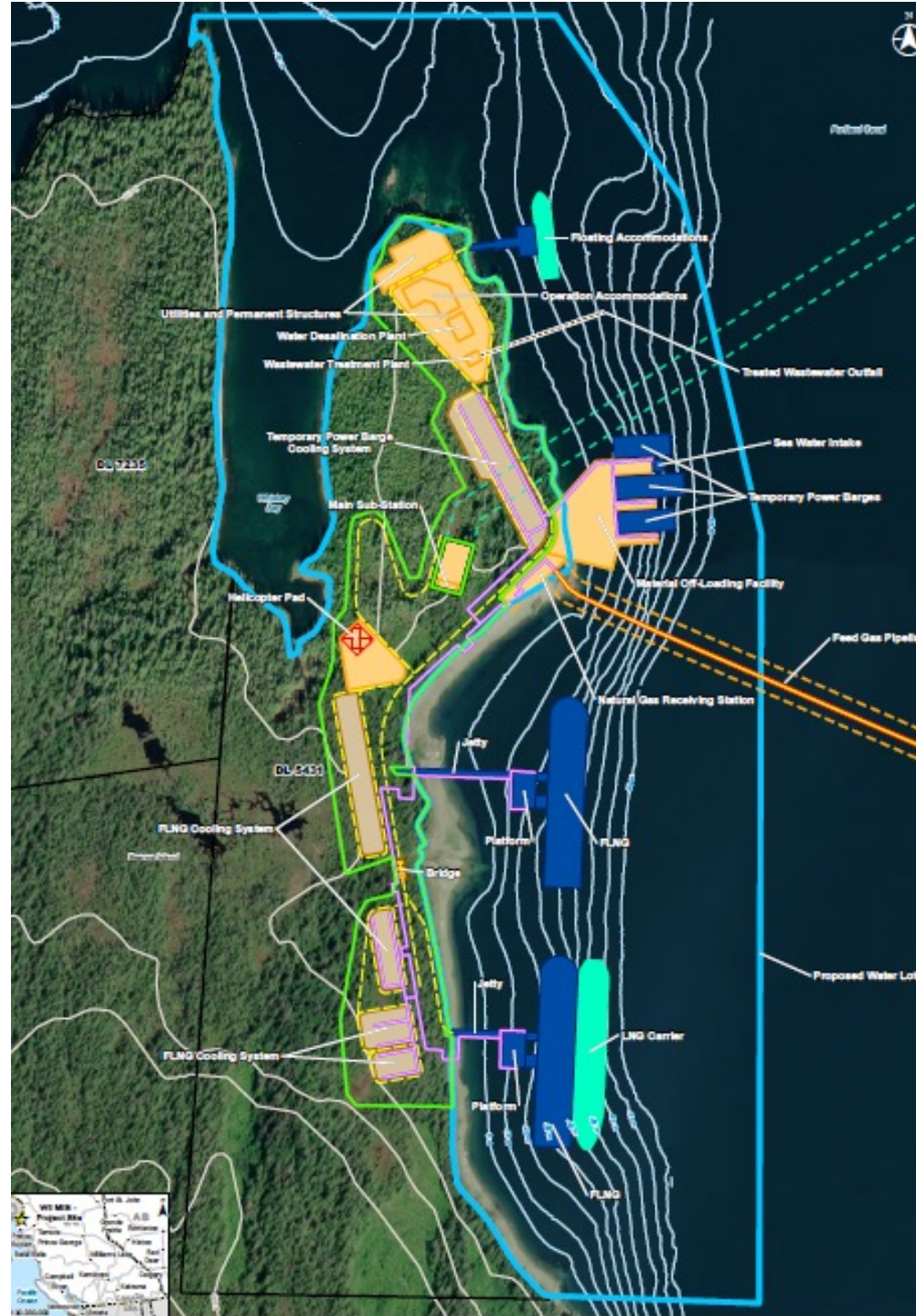
128°00'W

# Project Details



- Uses innovative near-shore floating liquefaction technology to limit environmental footprint and reduce on-land infrastructure
- Uses a floating hotel (“floatel”) to house workers during construction
- Will receive approximately 1.7 to 2.0 billion cubic feet of natural gas per day via pipeline
- Will receive power from a third party built 287kV transmission line from the New Aiyansh substation to the Project site
- TC Energy’s Prince Rupert Gas Transmission (PRGT) and Enbridge’s Westcoast Connector Gas Transmission (WCGT) are being evaluated as third party pipeline providers. Both pipeline projects have approved BC Environmental Assessment Certificates.

# Project Layout



# Environmental Assessment



- Project environmental assessment is now underway to meet the requirements of the BC Environmental Assessment Act, the Impact Assessment Act and Chapter 10 of the Nisga'a Treaty
- Nisga'a Nation is directly involved to ensure the Project meets the highest environmental standards
- Possible environmental, social and economic impacts will be identified and appropriately mitigated and managed
- The Nisga'a Citizen Survey and Focus Group Discussions are important components in the environmental assessment process
- We appreciate and value your input!

# Environment & Climate Change



- Ksi Lisims LNG will have one of the lowest carbon intensities of any large-scale LNG export project in the world
- Designed to be fully electrified with a goal of being a Net Zero facility, achieved through a combination of renewable power, efficient design and the purchase of carbon offsets
- Will transport Canadian LNG to global markets allowing them to switch away from coal and oil
- LNG helps transition the world to a low carbon economy, replacing coal and oil and providing a backstop to intermittent renewables such as wind and solar



# Reducing Global Carbon Footprint



# Economic Development



- Since the Nisga'a Final Agreement came into force, the Nisga'a Nation has been actively seeking to attract economic development activity in the Nass Valley
- Ksi Lisims LNG will generate significant social and economic benefits:
  - Public revenues
  - Jobs during construction and operations
  - Training opportunities
  - Business opportunities
- Total direct and indirect economic impacts related to the Ksi Lisims LNG facility, infrastructure and upstream activities is estimated at approximately \$55 billion

# Project Schedule



- Ksi Lisims LNG is in the early stages of:
  - Environmental assessment work
  - Indigenous and community engagement
  - Project design
- Environmental assessment filing aims for early 2023
- Based on regulatory approvals and final investment decision by Project partners, construction could begin in 2024
- Operations could start in late 2027 or 2028

# Ongoing Nisga'a Nation Engagement



- The President of the Nisga'a Nation has provided Nisga'a Citizens with numerous Project updates on the Nisga'a Lisims website
- Monthly Executive Updates and Council of Elders and WSN meetings
- Village Government information sessions
- Two Virtual Open Houses held last September and February
- Seven Open Houses held in April and May attended by 250+
- We are just beginning and there will be more opportunities to provide feedback over the next 12-24 months

# Ongoing Nisga'a Nation Engagement



Our full Project Description is posted on the BC Environmental Assessment Office Website [EPIC \(gov.bc.ca\)](http://epic.gov.bc.ca)

For further information, contact us at: [info@ksilisimslng.com](mailto:info@ksilisimslng.com)

# Ksi Lisims LNG Project



Thank you for your time and input!

