



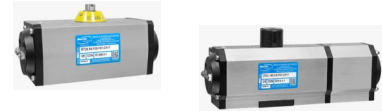
Representing Valves, Actuators & Fluid Process Components for Industrial and Commercial Applications



The best way to automate your process!

Rack & Pinion Pneumatic Actuators

- Aluminum Rack & Pinion — Superior Performance, 17 sizes, patented dual travel stop design
- Stainless Steel Rack & Pinion
- 180 degree aluminum



Heavy Duty Scotch Yoke Actuators

- HD Series—Double Acting, Spring Return, Electro-Hydraulic
- HD Series—SHD (symmetric) and CHD (canted) heavy duty



ME Series Electric Actuators

- Heavy duty, NEMA 4/4X/IP67 aluminum enclosure, 3D position indicator, auxiliary limit switches, internal heater
- 120VAC or dual voltage 24VAC/24VDC models for On/Off/Log or Modulating control
- Additional voltages and customizations available



Gear Operators and Declutchable Gear Override units

Limit Switch Boxes, Solenoids and accessories

- NEMA 4 / 4X / 7 / 9 Compact Designs



www.maxairtech.com



High Performance Butterfly Valves

- Double offset, 150 & 300 class, carbon and stainless steel, Wafer & Lug, through 72"



Control Butterfly Valves

- Wafer, Lug, Flanged, 150 & 300 class, 3-8"



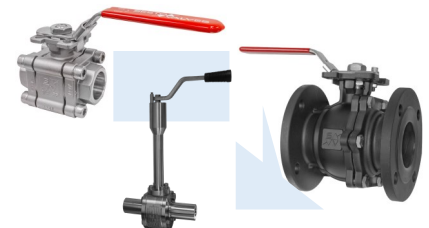
Resilient Seated Butterfly Valves

- Ductile Iron & Stainless Steel Bodies, Wafer & Lug design, through 48"



Ball Valves

- Flanged Floating, Trunnion, Multiport—150 - 2500 class
- Three piece / seal welded two piece
- Standard and full port
- Severe Service, Metal Seated—150—2500 class
- Cryogenic, tested to -320 F—150—2500 class
- Double Block and Bleed



Control Valves
Actuators & Positioners
Steam Conditioning Valves
Controller & Control Units

Control Valves

- Sizes 1/2" to 32" - Globe, Double Seated, Three-Way, Hygienic, Angle
- ANSI class 300, 600, 900, 1500, 2500
- Temperatures -320° F (Cryogenic) to 1100° F



Steam Conditioning Valves

- Sizes 2" to 32" - Globe & Angle
- ANSI class 150 - 2500
- Temperatures—up to 1150° F

Positioners



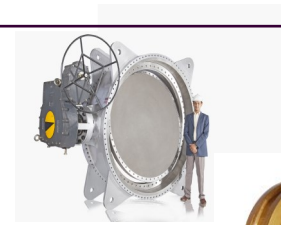
www.advancevalves.com

Triple Offset Butterfly Valves

Dual Plate Check Valves

Triple Offset Metal Seated Butterfly Valves

- Sizes 3" to 120" - Wafer, Lugged, Flanged, Butt Weld
- ANSI class 300, 600 & 900 - Bi-directional
- Temperatures -196° C (Cryogenic) to 900° C



Dual Plate Check Valves

- Sizes from 2" to 80" diameter—Soft Seated and Metal to Metal Seated
- ANSI Class 125 to ANSI Class 2500 - API 6A from API 5000 to API 10000



www.knifegates.com

Knife Gate Valves

Slide Gate Valves

Floating Disc Check Valves

Custom Valves

Knife Gate Valves

- Sizes 2" to 36" - Cast Stainless, Metal or Resilient Perimeter Seated
- ANSI 150 and 300 class. Uni-directional or Bi-directional Seating
- Compliant with MSS SP81, AWWA C520, and ASME B16.6
- Manual or automated

Dual Seated Knife Gate Valves

- Sizes 2" to 24" - Full Port, Bi-Directional Drip Tight Shutoff
- Variety of alloys, seat materials, and actuation options

Fabricated Knife Gate Valves

- Manufacturing capacity for sizes 2" to 170" diameter and pressure ratings up to ANSI CL 300

American Iron & Steel (AIS) compliant upon request



www.microfinishgroup.com

Trunnion Mounted Ball Valves

ASME B16.34 Floating Ball Valves

Cryogenic Service Ball Valves

API 6D Full Port Swing Check Valves

Trunnion Ball Valves

- Metal Seated, 150—2500 class, 1/2' - 48"

Floating Ball Valves

- 2 & 3 piece designs, 150—2500 class, 1/2" - 10"
- Fugitive Emission Designs
- 3-way & Jacketed Designs

Cryogenic Ball Valves

- Floating & Trunnion, 150—900 class, 1/2" - 36"

API Swing Check Valves



www.gallicasina.com

Lubricated Plug Valves

Standard Type API 6D

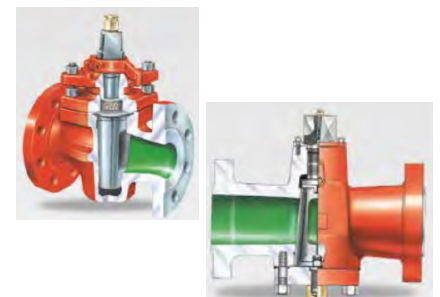
2-way & multiport

Lubricated Plug Valves

- Two Way Standard Type
- Pressure Balanced Type - Standard and Full Bore
- Lever or Gear operated - Standard or extended stem

Sleeve Lined Plug Valves

- Fluoropolymer sleeve
- PTFE & PFA lined Plug Valves



Our Vision: Summit Controls, LLC will be the most valued business partnership by our Distributor and Manufacturer Stakeholders and the leading process valve and controls representative serving the Northeast and Midwest US Industrial Distribution market.



Manufacturers' Representative

Jerry King - Mid-Atlantic & Northeast Regions

Email: jking@summitcontrolsllc.com

PH: (717) 951-5277

Jeff Gilman - Ohio Valley & Midwest Region

Email: jgilman@summitcontrolsllc.com

PH: (513) 235-8510

2020 v3



www.summitcontrolsllc.com