

TRANSITION TOWN DE-URBAN DESIGN STUDIO

CO-DIRECTORS:

Dr. Hossein Sadri, Associate Professor of Architecture
Dr. Senem Zeybekođlu Sadri, Associate Professor of Architecture

Assistants:

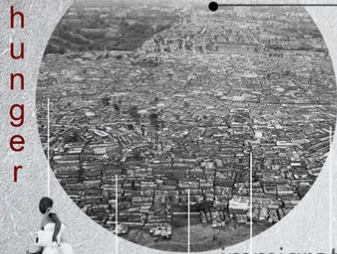
Serap Sönmez
Bahadır Büyükcıngı



Our design studio entitled **“De-Urban Design Studio”** addresses the design of the transformation process of human settlements from existing urbanized conditions into ideal habitats.

This is a transition from the polluted environments and human souls towards cities which can act as “ethical unions of people” and “eco-communities” as it is introduced by Murray Bookchin in his book of Urbanization Without Cities.

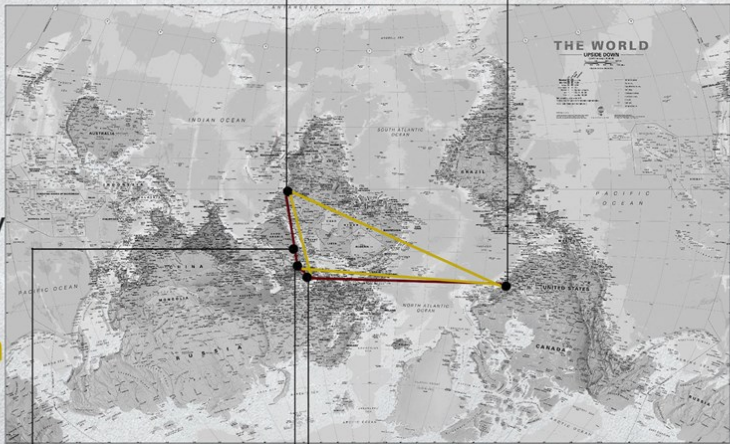
hunger



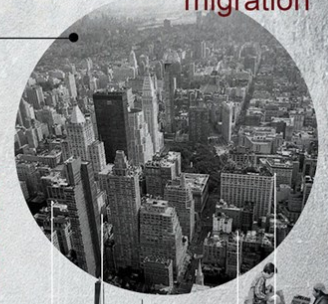
pollution

immigration
poverty

terrorism



traffic

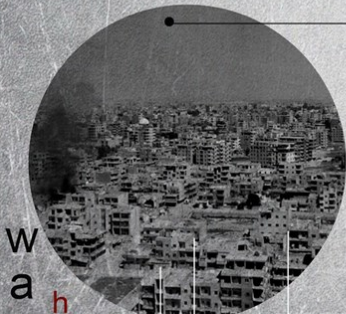


migration

urbanization



air pollution
displacement



war
hunger

immigration

demolished
buildings

infrastructure



food
water
supply

migration



political dispute

urbanization

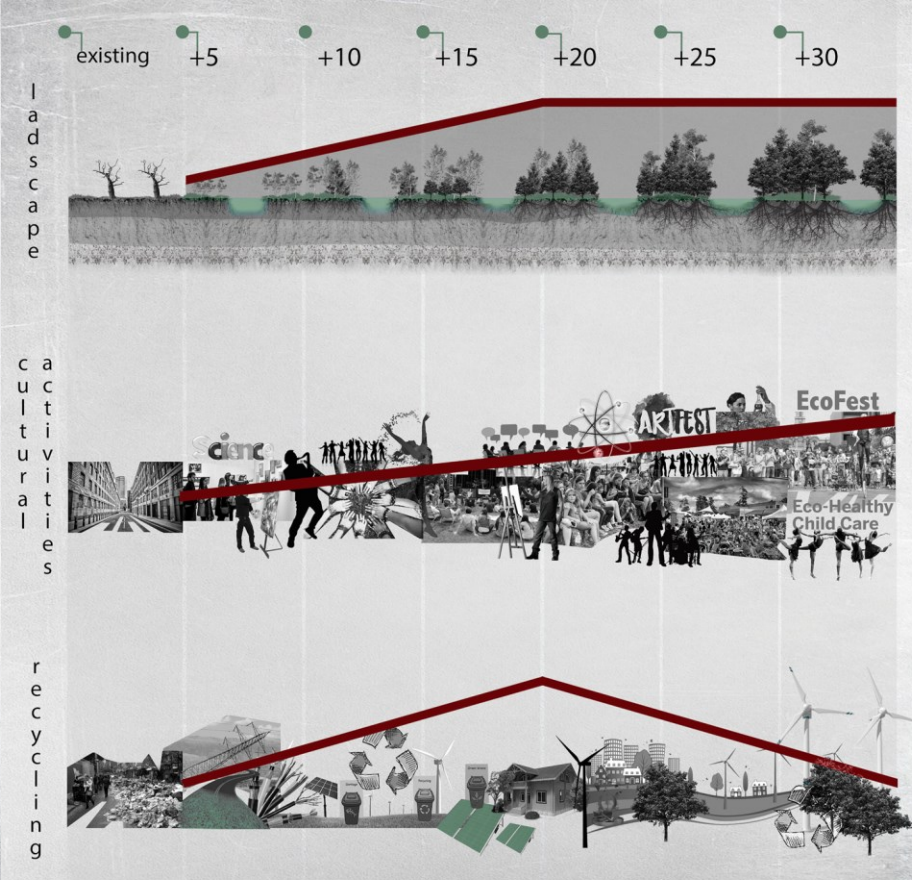
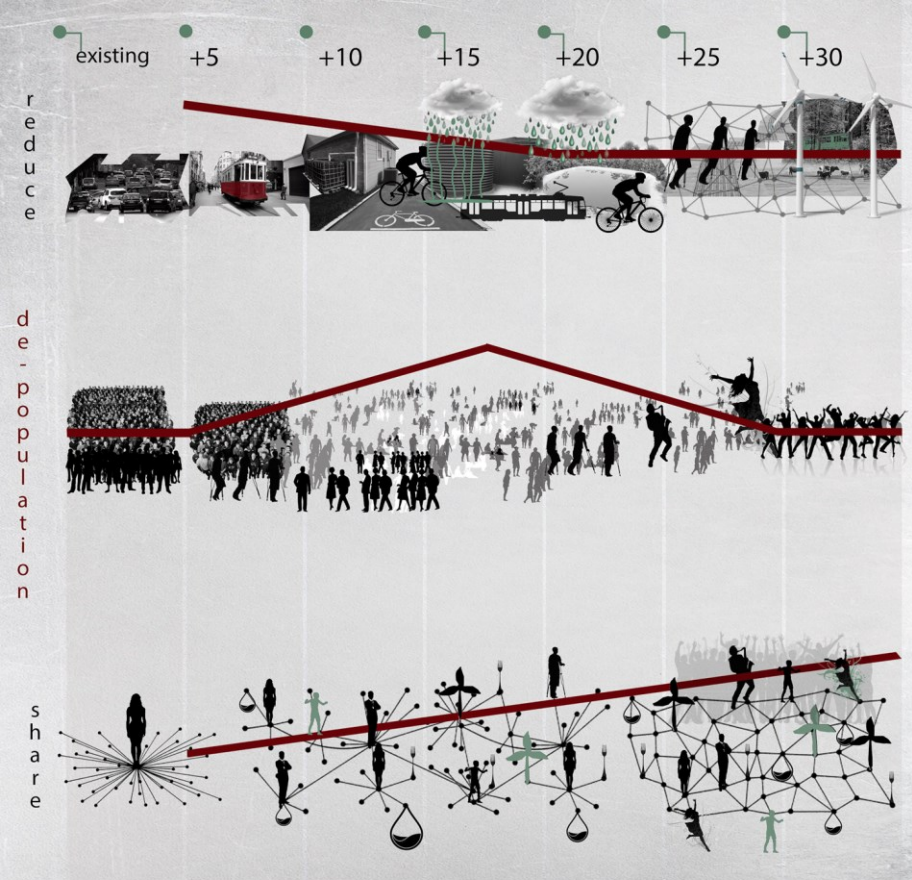


migration

destruction of nature

traffic





We are working on the six phases of this radical shift to realize our vision projects which are socio-ecologically sensitive cities in harmony with nature; freed from oppression, cities where education, art, science and culture is not only produced, performed and accessed by the elite but by all; where people can work and share in solidarity rather than competition.



Our long term (30 years) vision is to create cities which have their roots in their own ground, are watered by their local rains, their fruits feed the various beings of their place and the decomposition of their leaves gives life to the soil and billions of micro and macro organisms in their area. (just as we designed the learning environment of our design studio)

To make this dream and vision possible, we apply the design techniques and principles of **permaculture design**. With inspiration from the transition town movement and by making use of the transition design field of knowledge, we design the process and methodology of this transformation.



Sample Research Presentations

TRANSITION DESIGN

Theories of Change - New Ways of Designing

A theory of change is always present within a planned course of action (design)

Transformational | societal change : **our ability to change our ideas about change itself** – how it manifests and how it can be initiated and directed.

Designers = agents for change

Design and problem solving = a deep understanding of the dynamics of change within complex social and natural systems

Our conventional ideas about change lie at the root of many wicked problems

Transition to sustainable futures will require sweeping change at every level of our society

Designers should examine their own value systems and the role it plays in the design process

Transition solutions will be best conceived within a more holistic worldview that can inform more collaborative, and reasonable, processes for interaction.

A practical understanding of the process of individual change is fundamental for work in social systems change

Living in and through transitional times = self-reflection and a new way of "being" in the world.

Designers' mindsets and positions relative to what's identified as a problem and how it is framed and solved within a given context.

Designers should examine their own value systems and the role it plays in the design process

Transition solutions will be best conceived within a more holistic worldview that can inform more collaborative, and reasonable, processes for interaction.

A practical understanding of the process of individual change is fundamental for work in social systems change

Transition Design is distinct from service design or social innovation design in:

- It's deep grounding in future-oriented values
- Its transdisciplinary imperative
- Its understanding of how to **initiate and direct change** within social and natural systems

Change must be based upon ;

- new mindset or worldview and posture (internal)
- different ways of interacting with others (external)

Historically change can be ;

- "steered" through, catalyzed, top-down design processes
- produced clear, predictable outcomes

Change in transition systems can be ;

- catalyzed and even gently directed
- cannot be managed or controlled
- outcomes cannot be accurately predicted

Crisis of perception derives from the fact that most people in modern society, especially large social institutions, subscribe to the concepts of an outdated worldview, a perception of reality inadequate for dealing with our overpopulated, globally interconnected world.

	Existing / Dominant	Holistic	Posture (Approach / Attitude)
World View/Target	Machine	Living organisms	Respect for nature, understanding of human ignorance
Human Presence	Superior	Inter-connected	Welfare of natural world and future generations
Nature	Resource for consumption	Context of human life	Welfare of natural world and future generations
Timeframe	Present generation	Present and future generation	Welfare of natural world and future generations
Environmental & Social Class	Can be fixed	Sense of urgency for change	Commitment to development
Community	Individual vs. Community	Community focus	Collaboration & Interaction
Business vs. Economy	Primary	Everyday life is primary	Commitment to balance in life
Problem Solving	Individual focus	Whole system focus	Transdisciplinary collaboration
Competition vs. Cooperation	Competition is basis for success	Cooperation is more powerful	Commitment to share information & knowledge
Flexibility & Control	Chaos is problematic	Welfare of present and future generations	Wardful anticipation
Agency & Uncertainty	Unreliable	Characteristics	Openness to new ideas and ways of acting
Designers' Role	Experts, leadership	Catalysts, Followership	Openness to both lead and be lead
Time	Fast-paced	Slow-paced, mindful	Patience

TRANSITION DESIGN : An Educational Framework for Advancing the Study and Design of Sustainable Transitions

Authors: Verya Prabhakaran, Tommaso Basso, David Hertz

Abstract: Research practitioners and design have a profound history of being at the forefront of change. However, in order to be effective in the present of complex design, it is necessary to reflect on the nature of design itself. This paper explores the nature of design and its role in the world, and how it can be used to advance the study and design of sustainable transitions. It discusses the nature of design and its role in the world, and how it can be used to advance the study and design of sustainable transitions.

Introduction: The complex, multi-scale, multi-stakeholder nature of design and its role in the world, and how it can be used to advance the study and design of sustainable transitions. It discusses the nature of design and its role in the world, and how it can be used to advance the study and design of sustainable transitions.

Design's Approach for Solving Complex Problems: Design's approach for solving complex problems, including its role in the world, and how it can be used to advance the study and design of sustainable transitions. It discusses the nature of design and its role in the world, and how it can be used to advance the study and design of sustainable transitions.

Systems Design: Systems design, including its role in the world, and how it can be used to advance the study and design of sustainable transitions. It discusses the nature of design and its role in the world, and how it can be used to advance the study and design of sustainable transitions.

Design Research: Design research, including its role in the world, and how it can be used to advance the study and design of sustainable transitions. It discusses the nature of design and its role in the world, and how it can be used to advance the study and design of sustainable transitions.

IL Transition Design: IL Transition Design, including its role in the world, and how it can be used to advance the study and design of sustainable transitions. It discusses the nature of design and its role in the world, and how it can be used to advance the study and design of sustainable transitions.

Area of Design Focus Particular to Relevant to Socio-Technical Transition Management: Area of Design Focus Particular to Relevant to Socio-Technical Transition Management, including its role in the world, and how it can be used to advance the study and design of sustainable transitions. It discusses the nature of design and its role in the world, and how it can be used to advance the study and design of sustainable transitions.

Design for Service: Design for Service, including its role in the world, and how it can be used to advance the study and design of sustainable transitions. It discusses the nature of design and its role in the world, and how it can be used to advance the study and design of sustainable transitions.

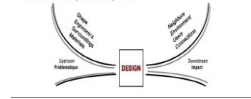
Design for Social Innovation: Design for Social Innovation, including its role in the world, and how it can be used to advance the study and design of sustainable transitions. It discusses the nature of design and its role in the world, and how it can be used to advance the study and design of sustainable transitions.

Design for Policy: Design for Policy, including its role in the world, and how it can be used to advance the study and design of sustainable transitions. It discusses the nature of design and its role in the world, and how it can be used to advance the study and design of sustainable transitions.

DESIGN'S (DIS)ORDERS & TRANSITION DESIGN

Author: Carlos Rodríguez
University: Campus Mola University
Department: Doctor of Design and Transient Studies
Reviewed by: Isaac Pérez
©: 2014, Carlos Rodríguez
©: 2014, AIAA

Each design has two aspects to consider:
 • **Uplifters:** The things that affect the design and manifest it.
 • **Downlifters:** The things that the design affects.



Other Ways of Designing: Other ways of designing, including its role in the world, and how it can be used to advance the study and design of sustainable transitions. It discusses the nature of design and its role in the world, and how it can be used to advance the study and design of sustainable transitions.

Psychological Disorders Most Designers Have: Psychological Disorders Most Designers Have, including its role in the world, and how it can be used to advance the study and design of sustainable transitions. It discusses the nature of design and its role in the world, and how it can be used to advance the study and design of sustainable transitions.

BIPOLAR: Bipolar, including its role in the world, and how it can be used to advance the study and design of sustainable transitions. It discusses the nature of design and its role in the world, and how it can be used to advance the study and design of sustainable transitions.

Designer can expand their scope of work: Designer can expand their scope of work, including its role in the world, and how it can be used to advance the study and design of sustainable transitions. It discusses the nature of design and its role in the world, and how it can be used to advance the study and design of sustainable transitions.

Most designers focus on improving existing designs and lifestyles: Most designers focus on improving existing designs and lifestyles, including its role in the world, and how it can be used to advance the study and design of sustainable transitions. It discusses the nature of design and its role in the world, and how it can be used to advance the study and design of sustainable transitions.

The School of Design at CMU developed another kind of codes of design framework, where the design gets: The School of Design at CMU developed another kind of codes of design framework, where the design gets, including its role in the world, and how it can be used to advance the study and design of sustainable transitions. It discusses the nature of design and its role in the world, and how it can be used to advance the study and design of sustainable transitions.

But for that to happen, the designer should follow transition design, being more flexible and acknowledging the hypocrisy that comes from being a change agent towards the new system from within the old one. But for that to happen, the designer should follow transition design, being more flexible and acknowledging the hypocrisy that comes from being a change agent towards the new system from within the old one.

Designing with transitioning communities — The case of La Borda

Author: Carlos Rodríguez
University: Campus Mola University
Department: Doctor of Design and Transient Studies
Reviewed by: Isaac Pérez
©: 2014, Carlos Rodríguez
©: 2014, AIAA

Abstract: Research practitioners and design have a profound history of being at the forefront of change. However, in order to be effective in the present of complex design, it is necessary to reflect on the nature of design itself. This paper explores the nature of design and its role in the world, and how it can be used to advance the study and design of sustainable transitions. It discusses the nature of design and its role in the world, and how it can be used to advance the study and design of sustainable transitions.

La Borda? Spain had problems with housing + employments so (if there's no job → you can't rent or buy a house) in La Borda they were facing the same things as well, and they had a background before the crisis with co-housing projects, so people wanted to bring back the same way again, to solve their problems.

GLOBAL CRISIS: → Catalan → Mediterranean
ECOLOGICAL CRISIS: → Stream
FINANCIAL CRISIS: → Trapped
INDUSTRIAL CRISIS:
EMPLOYMENT CRISIS:
DEMAND CRISIS:
GOVERNMENT INTERVENTION TO STOP THE FREE FALL OF ECONOMY: → Regulatory

FISCAL CRISIS: It is a crisis of how we understand ourselves, and therefore our narrative of the world, based in the majority of our cultures on the idea of separation.

WORKING GROUPS: Architectural Commission, Communications Commission, Conviviality (as shared living) Commission, Economic Commission, Juridical Commission, Secretary Commission

Adria's roles: Citizen - Researcher - Designer

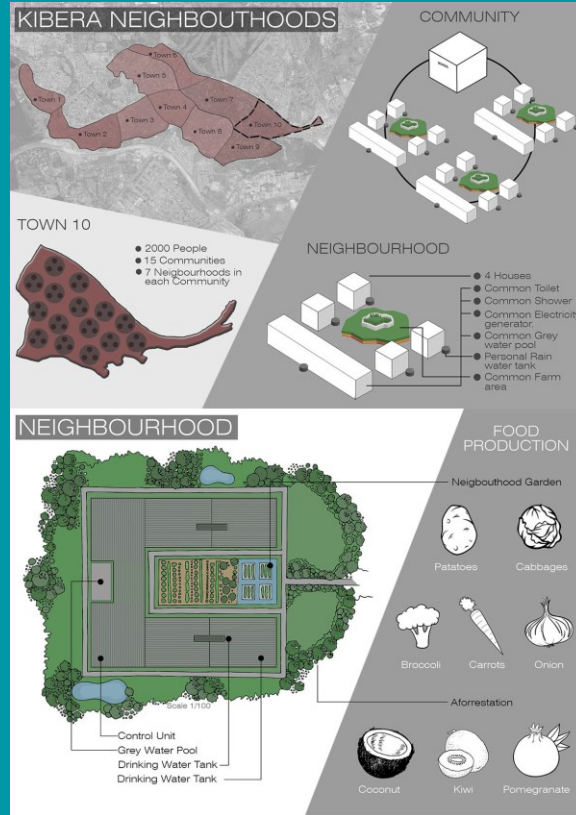
Mortgage Crisis solution: -Social housing
 -Building cooperatives
 -Housing cooperative of shared ownership

Financial aspects: -Budget: 2 millions Euros
 -Partnership with the municipality to get the land for 75 years.
 -20% of the budget is paid by the members of the coop.
 -20% lent by the coop bank (coop57).
 -The rest: raised through micro lending campaign.

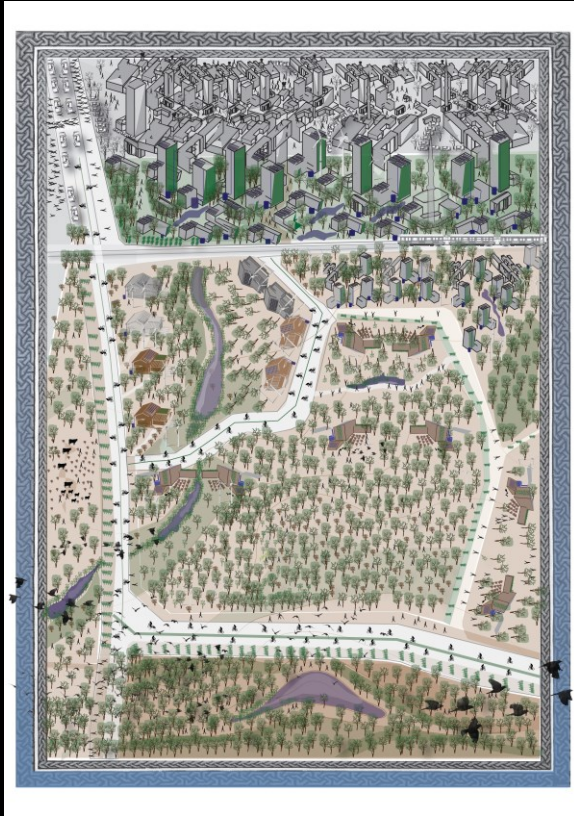
Rules in La Borda: -You own your own house but in case you want to leave the coop, they give you the money you invested and choose another person to replace you. This person should pay it's share to use the house.
Challenges: -Keeping prices low
 -Finding financial resources
 -Changing people's mindset

Land: Municipality rented the land for 75 years.
Facilities: -Laundry room -Big kitchen -Porches -Dining room -Terrace, guest room
Contact: 28 families. Individuals: 10%
 Couples: 43%
 Families: 24%
 Groups: 10%

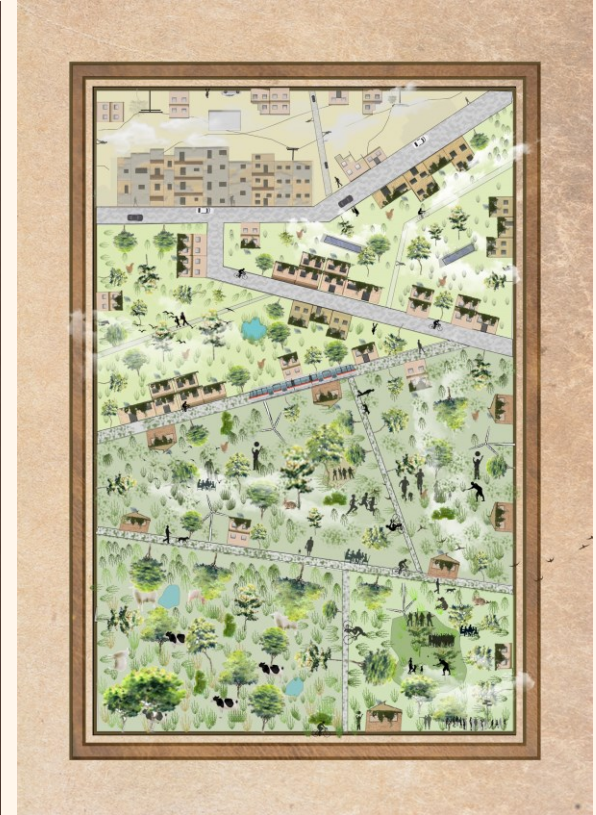
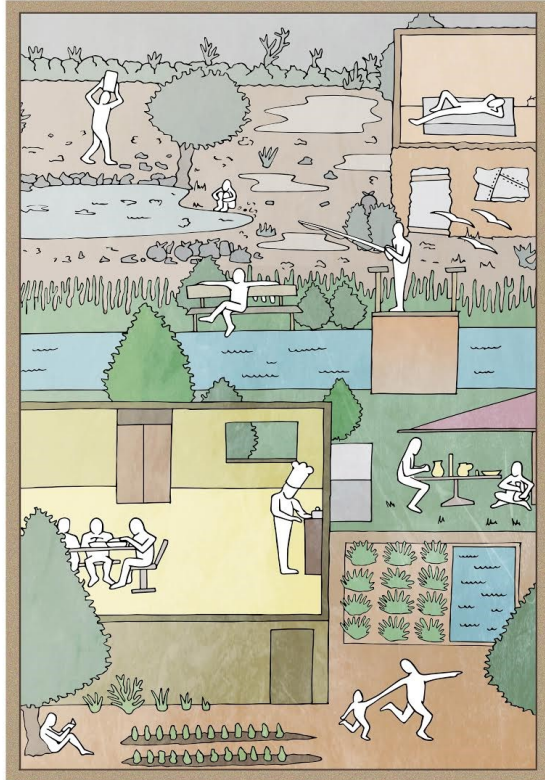
Diverse Cities, Diverse Solutions: Kibera, Raqqah, Nicosia, Istanbul, Manhattan



Sample Conceptual Works: Miniature



Sample Conceptual Works: Miniature



Sample Transition Design Plans

TRANSITION DESIGN / PLANS

Weather: Variable (2020/44)

- Private double house
- Existing road
- Existing green area
- Existing tree
- On road food
- Private garden trees
- Neighbourhood food forest
- Neighbourhood food forest with water
- Neighbourhood forest / Pine areas
- Neighbourhood Vegetable
- Forest area
- Pond
- Social area & full lake
- Playground area
- Small animals area
- Agriculture area
- New Neighbourhood area
- New house vegetable area
- New Neighbourhoods central hall
- New Neighbourhood forest areas
- Renewable energy (Sun and water)
- Storage strategies for building
- Storage strategies for community



LEBAGANTS

EXISTING MASTER PLAN 2017



2017 / 2022

2022 / 2027



2027 / 2032

2032 / 2037



2037 / 2042

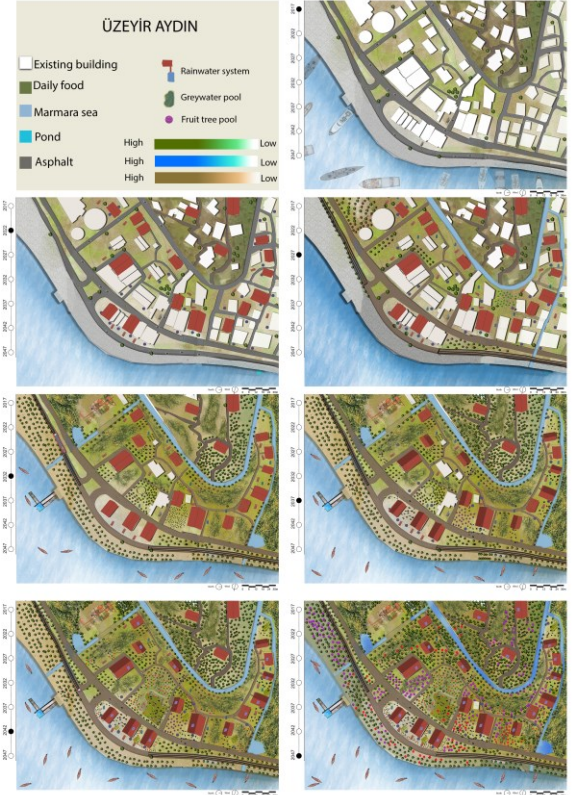
2042 / 2047

MUBEE ALZAIN - 161501129

7 PLANS SHOWS THE EVOLUTION TO REACH TO SUSTAINABLE ENVIRONMENT BY APPLYING :

- ROOF GARDEN
- BIYCLE PATH
- REMOVE THE VEHICLES
- VEGETABLE ROOF GARDEN
- RENEWABLE ENERGY
- SMALL GARDEN PAVEMENT
- VERTICAL GARDEN
- REFLECTIVE AND RECYCLED PAVEMENT
- PERMISSIBLE STREET & ALLEYS TO COLLECT WATER
- COMMUNITY GARDEN
- DEMOLISH SOME BUILDING
- COMMUNITY GREEN HOUSE
- WATER LAKE
- WILDLIFE POND
- WIDER SIDE WALK
- TREES AND VEGETATION
- MELKANS WITH GARDEN

LOCATION : SOUTH MANHATTAN



Sample Transition Presentations



Sample Transition Presentations





Semester Activities:

- 2 Exhibitions,
- 2 Seminar,
- 1 Conference,
- 2 Workshops



GAÜ Mimarlık Bölümü, 'Kentsizleşme tasarımı stüdyosu, geçiş kenti tasarımı' konulu dönem sonu sergisi düzenledi

GAÜ Mimarlık Bölümü öğrencilerinin, daha yaşanabilir kentler için çalıştığı 'GAÜ Mimarlık Bölümü öğrencilerinin, daha yaşanabilir kentler için çalıştığı' sergisi, 2015-2016 eğitim öğretim yılında, 2015-2016 eğitim öğretim yılında, 2015-2016 eğitim öğretim yılında...



Serginin açılışına katılan öğrencilerden Prof. Dr. Husein Sadi ve Doç. Dr. Seren Zeybekoğlu Sadi'nin konuşmaları.

GAÜ öğrencilerinden kentler için çalışma

Gine Amerikan Üniversitesi (GAÜ), Mimarlık Tasarım ve Gözetleme Fakültesi öğrencileri "Kentsizleşme Tasarım Stüdyosu"...

"Değişen Şehirler" başlıklı atölye çalışması, öğrencilerin "Kentsizleşme Tasarım Stüdyosu" kapsamında...



Atölye çalışması gerçekleştirildi.

"Geçiş Tasarımı" Semineri

GAÜ Habitus Araştırma Merkezi organizatörlüğünde "Geçiş Tasarımı" başlıklı seminer, Amerikan Üniversitesi öğrencileri tarafından...

"Geçiş Tasarımı" başlıklı atölye çalışması, öğrencilerin "Kentsizleşme Tasarım Stüdyosu" kapsamında...

Seminerin açılışına katılan öğrencilerden Prof. Dr. Husein Sadi ve Doç. Dr. Seren Zeybekoğlu Sadi'nin konuşmaları.

Atölye çalışması gerçekleştirildi

GAÜ Mimarlık Bölümü öğrencilerinin, daha yaşanabilir kentler için çalıştığı 'GAÜ Mimarlık Bölümü öğrencilerinin, daha yaşanabilir kentler için çalıştığı' sergisi...



Seminerin açılışına katılan öğrencilerden Prof. Dr. Husein Sadi ve Doç. Dr. Seren Zeybekoğlu Sadi'nin konuşmaları.

Studio Activities in the National Newspapers

GAÜ'de kentsizleşme sorunları incelendi

Gine Amerikan Üniversitesi (GAÜ) Habitus Çalışmaları Araştırma Merkezi organizatörlüğünde "Geçiş Tasarımı" başlıklı atölye çalışması...



GAÜ'de 'Geçiş tasarımı' semineri

"Geçiş Tasarımı" başlıklı atölye çalışması, öğrencilerin "Kentsizleşme Tasarım Stüdyosu" kapsamında...



Sınıfta Değil Dünyada Ders İşliyoruz

GAÜ Mimarlık Bölümü öğrencilerinin, daha yaşanabilir kentler için çalıştığı 'GAÜ Mimarlık Bölümü öğrencilerinin, daha yaşanabilir kentler için çalıştığı' sergisi...

Seminerin açılışına katılan öğrencilerden Prof. Dr. Husein Sadi ve Doç. Dr. Seren Zeybekoğlu Sadi'nin konuşmaları.

GAÜ Mimarlık Fakültesi Geçiş Kenti Tasarımı konulu sergi düzenledi

GAÜ Mimarlık Fakültesi öğrencilerinin, daha yaşanabilir kentler için çalıştığı 'GAÜ Mimarlık Bölümü öğrencilerinin, daha yaşanabilir kentler için çalıştığı' sergisi...



Seminerin açılışına katılan öğrencilerden Prof. Dr. Husein Sadi ve Doç. Dr. Seren Zeybekoğlu Sadi'nin konuşmaları.

'Geçiş kenti tasarımı' konulu dönem sonu sergisi düzenlendi

GAÜ Mimarlık Bölümü öğrencilerinin, daha yaşanabilir kentler için çalıştığı 'GAÜ Mimarlık Bölümü öğrencilerinin, daha yaşanabilir kentler için çalıştığı' sergisi...



GAÜ'de 'Kentsizleşme Tasarımı Stüdyosu, Geçiş Kenti Tasarımı' konulu dönem sonu sergisi düzenlendi

GAÜ Mimarlık Bölümü öğrencilerinin, daha yaşanabilir kentler için çalıştığı 'GAÜ Mimarlık Bölümü öğrencilerinin, daha yaşanabilir kentler için çalıştığı' sergisi...

Seminerin açılışına katılan öğrencilerden Prof. Dr. Husein Sadi ve Doç. Dr. Seren Zeybekoğlu Sadi'nin konuşmaları.

GAÜ Mimarlık Fakültesi Geçiş Kenti Tasarımı konulu sergi düzenledi

GAÜ Mimarlık Fakültesi öğrencilerinin, daha yaşanabilir kentler için çalıştığı 'GAÜ Mimarlık Bölümü öğrencilerinin, daha yaşanabilir kentler için çalıştığı' sergisi...



Seminerin açılışına katılan öğrencilerden Prof. Dr. Husein Sadi ve Doç. Dr. Seren Zeybekoğlu Sadi'nin konuşmaları.

'Geçiş kenti tasarımı' konulu dönem sonu sergisi düzenlendi

GAÜ Mimarlık Bölümü öğrencilerinin, daha yaşanabilir kentler için çalıştığı 'GAÜ Mimarlık Bölümü öğrencilerinin, daha yaşanabilir kentler için çalıştığı' sergisi...



GAÜ'de 'Kentsizleşme Tasarımı Stüdyosu, Geçiş Kenti Tasarımı' konulu dönem sonu sergisi düzenlendi

GAÜ Mimarlık Bölümü öğrencilerinin, daha yaşanabilir kentler için çalıştığı 'GAÜ Mimarlık Bölümü öğrencilerinin, daha yaşanabilir kentler için çalıştığı' sergisi...

Seminerin açılışına katılan öğrencilerden Prof. Dr. Husein Sadi ve Doç. Dr. Seren Zeybekoğlu Sadi'nin konuşmaları.

GAÜ Mimarlık Bölümü öğrencilerinin, daha yaşanabilir kentler için çalıştığı 'GAÜ Mimarlık Bölümü öğrencilerinin, daha yaşanabilir kentler için çalıştığı' sergisi...

Published Book

Sadri, H. And Zeybekoglu Sadri, S. (2018) Miniature:
Transition Town Design, GAU
Centre for Habitat Studies,
Girne

https://books.google.com/books/about/Miniature_Transition_Town_Design.html?id=i-IHDwAAQBAJ



Studio Team

