



# JAWA Connections

*The Japanese American Women Alumnae of UC Berkeley Newsletter*

## *In This Issue*

**JAWA's Expanded Partnership with NSU p.4**

**JAWA's 32nd Annual Scholarship and Awards Event p.7**

**New Board Member Bios p.8**

**Three Directors Who are Retiring This Year p.10**

**Japanese American Women Alumnae of UC Berkeley**

email: [JAWAUCB@gmail.com](mailto:JAWAUCB@gmail.com)

[www.JAWAUCB.org](http://www.JAWAUCB.org)

 [www.facebook.com/JAWAUCB](https://www.facebook.com/JAWAUCB)

## Welcome!

Dear JAWAUCB Friends,



This year those of us in the Bay Area have enjoyed a wonderful spring. Rain, sun, clean air, and cherry blossoms on the Cal campus. JAWAUCB greeted spring with its Annual Awards Event online. While we missed the chance to chat and renew our friendships, we were inspired by the testimonials of the scholarship awardees and our Outstanding Alumna, award-winning artist Midori Kono Thiel. We also enjoyed a presentation by community historian, author, and artist Patricia Miye Wakida.

All this reminded me of JAWA's vision and legacy – “Our vision is to inspire and support Asian American women as learners, leaders, and contributors to local and global communities in the spirit of our founding Japanese American Alumnae.” Through JAWAUCB I have learned about and met many leaders and contributors to our community and the nation, such as founding member, Dr. Yoshiye Togasaki and artist Midori Kono Thiel. I've also met today's young social activists,

*cont'd p.2*

lawyers, and business leaders. I was an adult before I had my first Japanese American teacher, poet Lawson Inada. What an inspiration and connection to poetry, language, and the world he opened up for me by sprinkling his lectures with words like “*shoyu*,” “*gaman*” and “*ojiisan*.” We all need role models throughout our lives. JAWAUCB is one place to meet them.

Grace Morizawa

Dr. Grace Morizawa, Chair

JAWAUCB Board of Directors

*Newsletter editor note: Grace is a retired elementary school teacher and principal, and currently works as the Education Coordinator for the National Japanese Historical Society. She received her Doctorate in Education (Ed.D.) from Cal in 2014.*

## About Us

The Japanese American Women Alumnae of UC Berkeley (JAWAUCB) is a chartered chapter of the California Alumni Association (CAA). Our mission is to “inspire and support Asian American women as learners, leaders, and contributors to local and global communities in the spirit of our founding Japanese American women alumnae.” Since 1970 our scholarship program has granted over 160 undergraduate and 70 graduate student scholarships to Asian American women. We also have sponsored a variety of events and activities with campus partners such as the UC Berkeley Nikkei Student Union, the Asian American & Asian Diaspora Studies Program, and the Center for Race and Gender to engage and support current students and alumni of UC Berkeley.

# Campus Updates

By Lisa Hirai Tsuchitani

## Faculty News

**Michael Omi** retired in June 2021 from the Department of Ethnic Studies at UC Berkeley. Co-author of *Racial Formation in the United States*, Professor Omi has transformed how we understand the social and historical forces that give race its changing meaning over time and place. He has served the campus in numerous positions, including as Director of the Institute for the Study of Social Change (now the Institute for the Study of Societal Issues), as Associate Director of the Haas Institute for a Fair and Inclusive Society (now the Othering and Belonging Institute), and as founding chair of the Asian American Research Center. A beloved faculty member and colleague, he is a recipient of UC Berkeley's Distinguished Teaching Award.

Under the leadership of Faculty Co-Chair **Lisa Hirai Tsuchitani** (Department of Ethnic Studies), the Asian American and Pacific Islander Standing Committee released a report in November 2021 on the status of Asian American and Pacific Islander (AAPI) undergraduate and graduate students, staff, and faculty at UC Berkeley entitled "Twenty Years Later: Asian Americans and Pacific Islanders at UC Berkeley." A key finding of this report is that the challenges facing AAPI communities at UC Berkeley have not significantly changed over the past two decades. Additional findings and recommendations from this report can be found [here](#).

On April 30th, 2022, the UC Berkeley Japanese American Studies Advisory Committee (JASAC), the Department of English, the Department of Theater, Dance, and Performance Studies, and the Center for Japanese Studies co-sponsored an English-Language stage reading of *The Ones Who Leave* (Sariyukumono, 去り行く者, 1927), translated by **Andrew Way Leong** (Department of English).

cont'd p.4

*The Ones Who Leave* is the only surviving play of Nagahara Hideaki, a Los Angeles-based author who wrote for a Japanese-language audience in the mid-1920s. The recording of the performance and Q&A with Leong, moderated by Philip Kan Gotanda (Department of Theater, Dance, and Performance Studies), is now available on the UC Berkeley Center for Japanese Studies [YouTube page](#).

First Look Sonoma, Paul Dresher Ensemble and Presidio Theatre Performing Arts Center in San Francisco proudly present the world premiere of *Both Eyes Open*, a chamber opera by **Philip Kan Gotanda** (Department of Theater, Dance, and Performance Studies) and Brooklyn-based composer Max Giteck Duykers, for in-person audiences on June 24, 25 and 26, 2022 at the Presidio Theatre Performing Arts Center. Combining contemporary music and singing, interactive audio and video, and narrative-based movement, *Both Eyes Open* revisits a pivotal moment in U.S. history and racial tensions that still resonate today. Please [click here](#) for tickets and additional information about the production.

## **JAWA's Expanded Partnership with NSU**

By Lynn Nakada

JAWA has undertaken new activities and efforts to strengthen the relationship between JAWAUCB and NSU (Nikkei Student Union), a student organization of some 60 Cal students. Just as JAWAUCB is the only alumni chapter of predominantly Japanese American alumni from Cal, NSU is the only Cal student organization of predominantly Japanese American students. Recent events that reflect this growing partnership include the following:

### **Faculty Club Lunch**

An informal lunch was held on November 18, 2021 at The Faculty Club at UC Berkeley, a first-time effort to bring together leaders from JAWA and NSU.

*cont'd p.5*



**Front Row:** Annika Masaki, Matthew Kojima, Grace, Lynn, Lisa, Janice **Back Row:** Nancy, Dan Yamada, Mitch Madayag, Bryce Nakahara, Aneesa Conine-Nakano, Steve Leonard

### Day of Remembrance

Day of Remembrance is an annual event held in partnership with NSU. It commemorates the signing of Executive Order 9066 on February 19, 1942, the federal order that resulted in 120,000 Japanese Americans in the United States, two-thirds of whom were US-born citizens, being incarcerated during World War II. This year's event was held on February 18, 2022, marking the 80th anniversary of that fateful action. Participation included the Muslim Student Association and Lambda Upsilon Lambda, a Latino-based collegiate fraternity, representing populations who have been subjected to similar racism and threatened actions in recent years. The event concluded with a candle lighting ceremony to honor the 10 internment camps, with participants from the JAWAUCB Board of Directors.



*cont'd p.6*

## NSU Graduation Reception

On May 5th, 2022, JAWA honored NSU's 2022 graduates with a reception held at the Alumni House Patio. Following welcome comments and acknowledgments by Lynn Nakada, the graduates received congratulatory remarks from JAWA Chair, Grace Morizawa; Cal Alumni Association Executive Director Susie Cohen Crumpler; and UC Berkeley's Japanese American Studies Advisory Committee Chair, Professor Lisa Tsuchitani. Matthew Kojima, NSU President, introduced the graduating seniors who introduced themselves and shared future plans. The program ended with an uplifting performance by NiCE, Nikkei Choral Ensemble, Cal's premier Japanese and English a cappella group, followed by a buffet of Japanese food.



**Left top:** NSU graduates stand with JAWA Board Member, Lynn Nakada. From left to right, Steve Leonard, Annie Adachi, Matthew Kojima, Lynn Nakada, Annika Masaki, Aneesa Nakano, Kylie Kubota, and Kohei Tsuchitani

**Left bottom:** NiCE, Cal's Nikkei Choral Ensemble

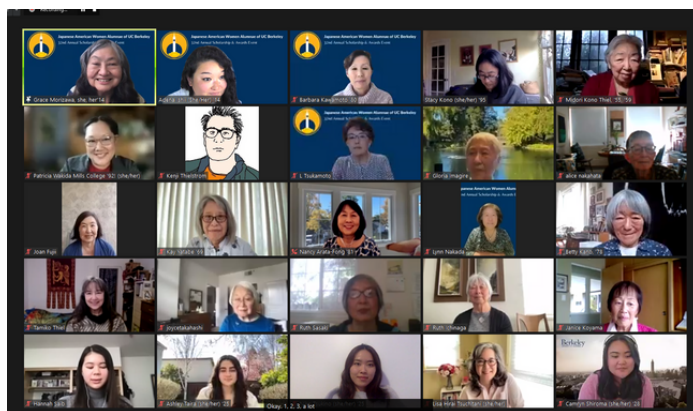
**Below:** Lynn Nakada, JAWA/NSU Liaison, delivers remarks



# JAWA's 32nd Annual Scholarship and Awards Event

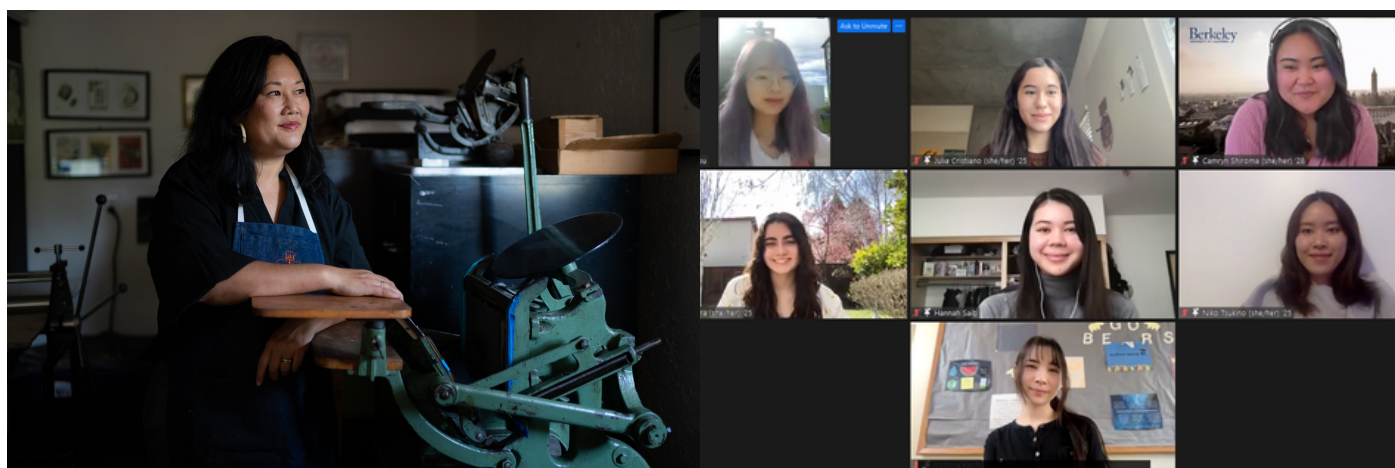
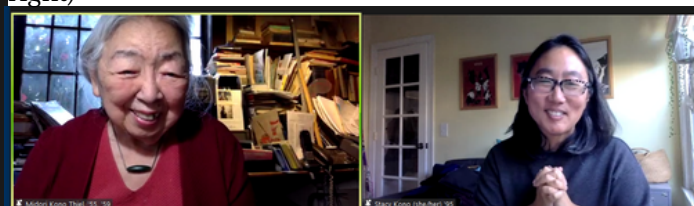
By Stacy Kono

On Saturday March 12, 2022 via zoom, JAWA members, colleagues, friends and family joined us in honoring the legacy of Japanese American women at UC Berkeley and the accomplishments of Cal undergraduate and graduate scholarship recipients and JAWA's Outstanding Alumna, Midori Thiel ('55, '60). Keynote Speaker, Patricia Wakida, moved us with her with engaging presentation, *Yonsei Power: Awakening Japanese American Archives through Art and Storytelling*.



Left: Guests at our third virtual and 32nd Annual Scholarship Event

Below: JAWA's Outstanding Alumna, Midori Thiel ('55, '60) with JAWA Board Member, Stacy Kono (on the right)



Keynote Speaker, Patricia Wakida  
Photo Credit: Kristen Murakoshi

2022's Scholarship Recipients (clockwise from the top-left): Ayako Chou, Julia Cristiano, Camryn Shiroma, Niko Tsukino, Victoria Koch, Ashley Taira, and Hannah Saib (Center)

cont'd p.8

- Please visit our website, [www.jawaucb.org](http://www.jawaucb.org) (events) for more information about our awardees and keynote speaker.
- For a feature piece in the March issue of the CAA Chapter Leader Newsletter about Midori Thiel, go to: [alumni.berkeley.edu/midori-kono-thiel-life-of-art/](http://alumni.berkeley.edu/midori-kono-thiel-life-of-art/)
- If you missed the live event, a recording is available for view here: [2022 JAWA UCB Annual Scholarship and Awards Event - YouTube](#)

## New Board Member Bios

By Carol Tateishi

As the JAWAUCB Board of Directors continues to evolve and change, we'd like to introduce our 2022 new directors whose terms begin on July 1, 2022:



### Madeline Zimring

Born and raised in the Los Angeles area, Madeline received her BA in Comparative Literature from UC Berkeley (2017), and a Master of Studies from Trinity College, Oxford in Modern Languages (2019). She is currently a second-year in the Comparative Literature PhD at Cal. Her passion for languages has led her to learn and study French, German, Italian, Latin, though Japanese is next on the list! Madeline

has worked as a language assistant in Paris and as a lecturer in the English faculty at the Université de Grenoble-Alpes, teaching courses on literary translation. In her spare time, she likes to play guitar, draw, volunteer, and spend time with friends and family.



### Ann Lew

Ann was born in Japan and came to the U.S. with her family when she was ten years old. She graduated from UC Berkeley in 1967 with a BA in Social Welfare. Soon after, she and her husband spent two years as VISTA volunteers, one year in Hawaii and the second in San Francisco's Chinatown.

*cont'd p.9*



Ann then enrolled in the teaching credential program at University of San Francisco and received her secondary credential in 1970. She began teaching and spent 30+ wonderful years mainly teaching English in different high schools in San Francisco.

In the late 1980's, over several summers, Ann attended a summer English program at Middlebury College in Vermont and received an MA in English. She retired from SFUSD in 2006 and has been spending her time volunteering in various capacities. She volunteered with Project Homeless Connect for about three years and in the classrooms at SF Juvenile Hall for 11 years until it closed down in 2019. Ann joined Pine United Methodist Church in 2009 and has been volunteering there ever since. She also participates with the Interfaith Movement for Human Integrity on issues of immigrant rights and ICE detention.



### **Joan Fujii**

Joan Fujii was born and raised in San Francisco and attended UC Berkeley. She graduated in 1968 with a BA in psychology. After living in Germany for a year and traveling in Europe, she returned to San Francisco and began working in various human resources positions. She eventually served as an HR executive at Macy's California in the Bay Area before joining Cost Plus World Market as VP Human Resources in Oakland California. After retiring she got

involved in various volunteer activities and she joined the J-Sei Board in 2011. She was involved in the Capital Campaign for the new building, the HR committee, and committees for fundraising events. After rotating off the Board she continues to enjoy participating in J-Sei activities. Joan lives in Berkeley with her husband Paul. Prior to the pandemic they enjoyed traveling, volunteering, and going to Cal football and basketball games.



# Three Directors Who are Retiring This Year

By Carol Tateishi

Sixty-eight years! That is the number of combined years of service of three special women – Lisa Tsuchitani, Ruth Ichinaga and Nina Ichikawa – who are stepping down this year from their long-held positions on JAWA’s Board of Directors. Their important contributions and efforts have helped shape who JAWA is today, and their work will continue to impact JAWA’s future. Thank you, Lisa, Ruth, and Nina.

We recently asked them a few questions:

- **When did you join the board or how many years have you served?**

**Lisa:** My first term on the JAWAUCB Board of Directors was in 1992, I believe.

**Ruth:** Tae Sano recruited me and I can’t believe I’ve been on the board since July 1998.

**Nina:** 2008!

- **What has been most rewarding or satisfying for you during your tenure?**

**Lisa:** I have cherished the many opportunities I have had over the years to work with and learn from such dedicated, talented, and gracious leaders in our alumni community.

*cont'd p.11*

**Ruth:** I've enjoyed getting to know and work with very talented, bright and creative Japanese American women on our board. We've also had the privilege of presenting fantastic women for our keynote speakers and we've chosen extraordinary women to be our Outstanding Alumna of the year. Listening to the scholarship awardees speak about their interests and the majors they've chosen have also been inspiring and uplifting. It has been most satisfying as we've begun to be more involved in other projects. Vera Kawamoto first involved us with NSU and we began a relationship with them that is now getting stronger and more enriching to both our organizations.

**Nina:** Learning from the earlier generations of JAWAUCB members and admiring all of their diverse talents, skills, life experiences and perspectives.

• **Any particular moments or memories you'd like to share?**

**Lisa:** The pandemic has changed our lives significantly in ways that we had never imagined. Amidst and despite the many challenges that COVID-19 has laid bare and exacerbated for our communities, I will never forget the courageous resilience and care that our Board members exemplified to ensure that JAWAUCB continue to serve the needs of our campus community during these difficult times. From learning how to use Zoom, shifting our quarterly meeting schedule to monthly meetings, and creating a newsletter to developing a 5-year strategic plan for the organization, our Board of Directors has been inspiring in their dedication and commitment to our purpose and values as an organization throughout the course of these past two years especially.

**Ruth:** I remember the lovely bento box lunches that we used to enjoy at Yoshi's in Oakland where we used to hold our annual luncheon.

**Nina:** I so admire Joyce Takahashi for her determination to record our history and preserve it for the future. We are indebted to her hard work and I encourage everyone to read the book she wrote, "Lives and Legacy."

*cont'd p.12*

- What do you see as the challenges in the coming years for JAWA and/or what excites you about JAWA as you look ahead?

**Lisa:** As one of the longest-serving Board members, I leave the Board with a deep sense of fulfillment and faith in its ability to continue its important work as an alumni chapter. I am excited about what the future holds for JAWAUCB, and look forward to continuing to work in partnership with the Board to realize its objectives.

**Ruth:** I'm so pleased that we have younger women on our board who can share and add their fresh ideas and different perspectives to help broaden the scope and vision for JAWA. It'll be fun and exciting to see where we'll be in 10 years. I'm looking forward to seeing the kinds of programs and projects that will be occurring as a result of all the planning and work that has gone on these past couple of years.

**Nina:** I think JAWAUCB is in great shape going into the future, as new members have joined the board and they are taking it in exciting new directions. I regret I don't have capacity now but hope to be more involved in the future. Of course, a big challenge has been the COVID-19 pandemic and the ways we couldn't be together in person. There is something so empowering about seeing over 100 highly accomplished Japanese American women in one room, celebrating each other and our distinguished alumni and community leaders! I want my daughter and other young women to be able to experience that and have it fuel their dreams.

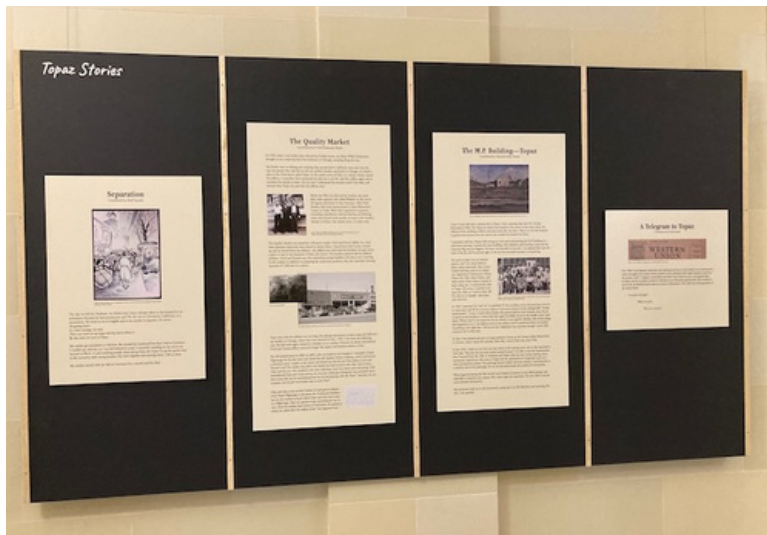
## Alumni News

By Kay Yatabe '69 B.A. Biochemistry

JAWA Board Director, Betty Kano M.F.A. '78, and I traveled to Salt Lake City the 4th weekend of April for the reception for “Topaz Stories” on display at the Utah State Capitol.

“Topaz Stories” is a collection of brief stories written by Topaz survivors and descendants, curated by writer Ruth Sasaki. These stories and accompanying photographs were mounted by Jonathan Hirabayashi in a display that called to mind barrack walls.

*cont'd p.13*



The reception on April 21, 2022 was held in the Capitol building rotunda with over 200 people attending. We heard speakers from the Governor's office, State Senator Jani Iwamoto, and Topaz Museum Board Member Sherrie Hayashi. Ruth Sasaki introduced the Topaz Stories project. Then there were readings of three of the stories on display.



On Saturday, we went to Delta to see the Topaz Museum and to explore the Topaz campsite.

*cont'd p.14*



For more about “Topaz Stories”, go to [www.topazstories.com](http://www.topazstories.com).

**Lillian Iida Matsumoto, '33**, was inducted into the California Social Workers Hall of Fame in October 2021, posthumously. She was one of the founding members of the JAWAUCB Scholarship Fund in 1966 and our Outstanding Alumna in 1998.

<https://rafu.com/2021/10/manzanar-childrens-village-superintendent-to-be-honored/>

## **Invitation to Contribute**

Please share your news with other members! We welcome and encourage you to contribute to our newsletter’s Alumni News: recent events, new ventures, work and family news, travel, hobbies — we’re interested! Send to [jawaucbnews@gmail.com](mailto:jawaucbnews@gmail.com), subject line, Alumni News. Please limit your comments to 150 words. Include your name, year you graduated, and your major (optional). Photos welcome.

# JOIN US!

Please consider joining the Japanese American Women Alumnae of UC Berkeley!  
For a \$20 annual membership fee, you will:

- Join a community of Japanese American women and friends with common interests and experiences and further the legacy of Japanese American women at UC Berkeley.
- Know you are supporting current Asian American women undergraduate and graduate students at Berkeley to reach their educational goals.
- Receive advance word of special community and educational events on campus.

The Japanese American Women Alumnae of UC Berkeley (JAWAUCB) exists to (1) present scholarship and fellowship awards from the JAWAUCB Endowment Fund established by agreement with the Regents of UC Berkeley; (2) promote donations, gifts, and bequests for continued growth of the JAWAUCB Endowment Fund for student awards at UC Berkeley; and (3) support research and educational initiatives focused on or related to Asian American women. Learn more at [www.jawaucb.org](http://www.jawaucb.org)

## JAWAUCB Board Members

### Elected Officers

- Grace Morizawa Chair
- Stacy Kono Vice Chair
- Lisa Hirai Tsuchitani Immediate Past Chair
- Nancy Arata-Fong Treasurer
- Kay Yatabe Recording Secretary
- Leslie Tsukamoto Corr. Secretary

### Appointed Officers

- Leslie Tsukamoto Historian
- Nancy Arata-Fong Nominations Chair
- Barbara Kawamoto Scholarship Chair
- Julie Nishihara Website Administrator
- Betty Kano Lunch Reservation Coord.
- Nina Fallenbaum Ichikawa Membership Chair
- Vacant Communications and Publicity
- Lynn Nakada NSU Liaison
- Carol Tateishi Newsletter Editor

### Directors at Large

- Ruth Ichinaga
- Adena Ishii
- Janice Koyama
- Joyce Takahashi
- Sayuri Takagawa

## Newsletter Team

- Editor, Carol Tateishi
- Adena Ishii
- Stacy Kono
- Grace Morizawa
- Leslie Tsukamoto

