

Shopping for your tiny home?
We're here to help.



Product Catalog

Expandable/Foldable Mobile Tiny Home

Pink Real Estate Investors LLC
www.PinkRealEstateInvestors.com
PinkRealEstateInvestors@gmail.com
Sales Representative, Real Estate Investor, and
Notary Public-Fatima Alnur



With shower and toilet, dry and wet separation
wooden floor with dampproof, more comfortable.



Big space



Easy installation



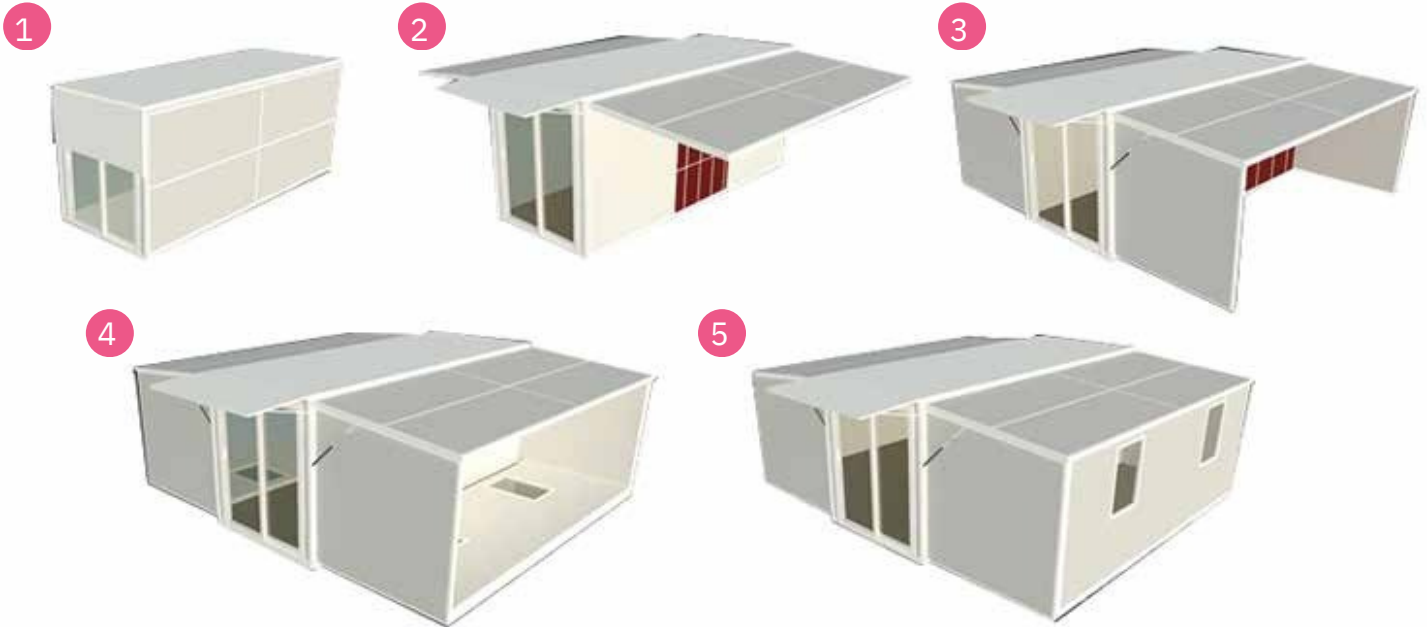
High comfort



Come with
accessories

4 STEPS = 1 HOUR INSTALL = 1 HOUSE

I N S T A L L A T I O N



TYPE A

- Opening size : 5.8Mx4.394Mx2.5M
- Closing size : 5.8Mx0.7Mx2.5M
- Total area : 27.5m²
- 1X40HQ can load 6 units

TYPE B

- Opening size : 5.8Mx6.3Mx2.5M
- Closing size : 5.8Mx2.2Mx2.5M
- Total area : 36.54m²
- 1X40HQ can load 2 units



20FT LAYOUT



One Living room
One Bedroom
One Restroom



One Living room
Three Bedrooms
One Restroom



One Living room
Three Bedrooms
One Restroom

Four Bedrooms
One Restroom

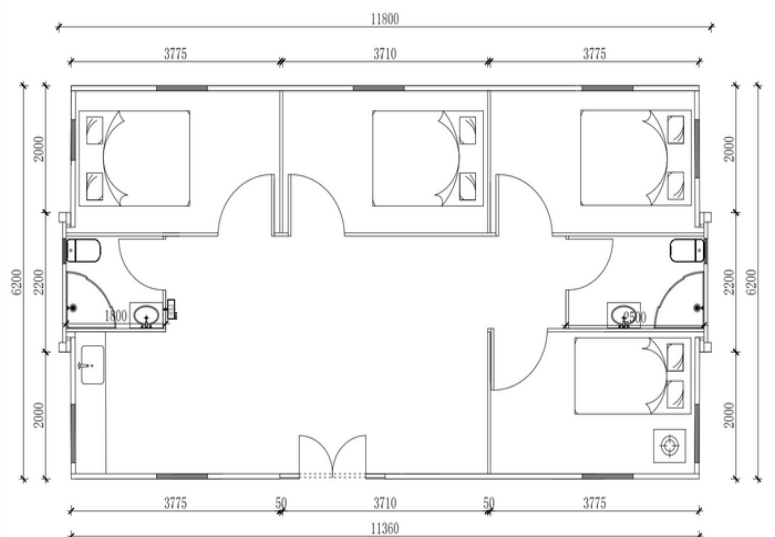
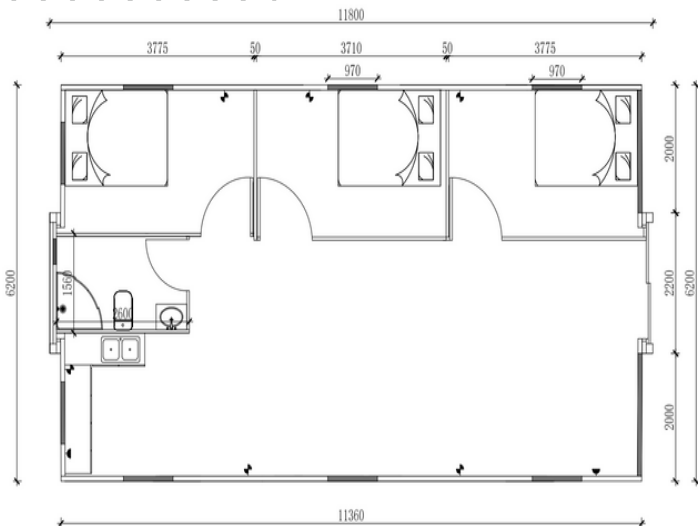
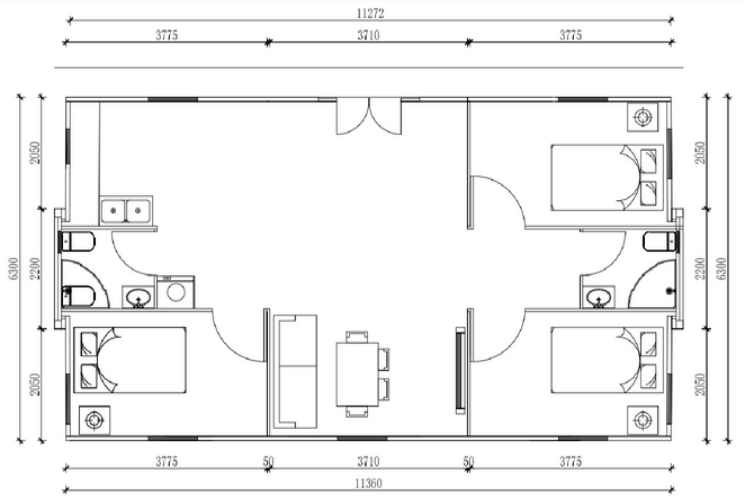
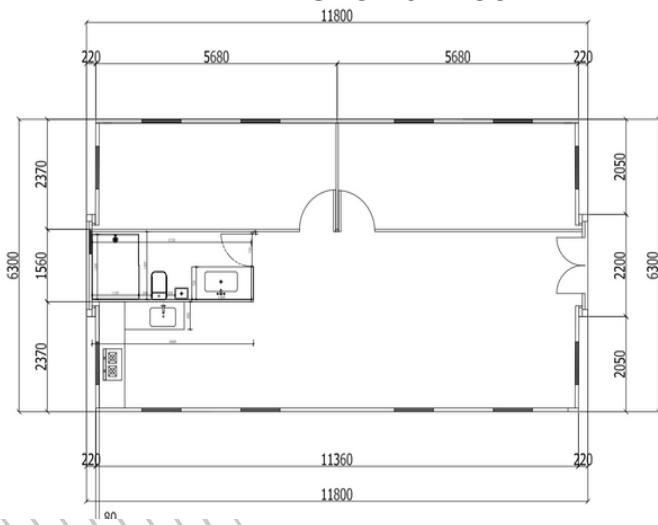


40FT LAYOUT



One Living room
Six Bedrooms
One Bathroom

One Living room
Five Bedrooms
Two Bathroom



ITEM 1

Two bedroom + One bathroom + One kitchen 20FT layout+3Dpanel wall





ITEM 2

Two bedroom + One bathroom + One kitchen 20FT layout+generally wall



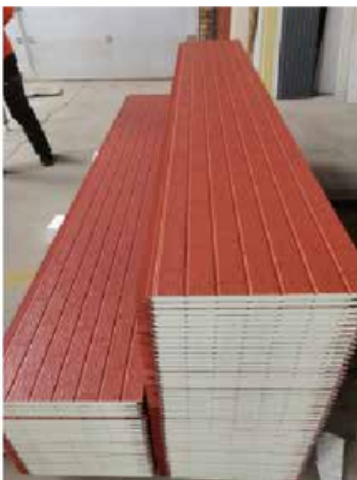
ITEM 3

Three bedroom + One bathroom + One kitchen 40FT layout



OUT SIDE WALL COLOR



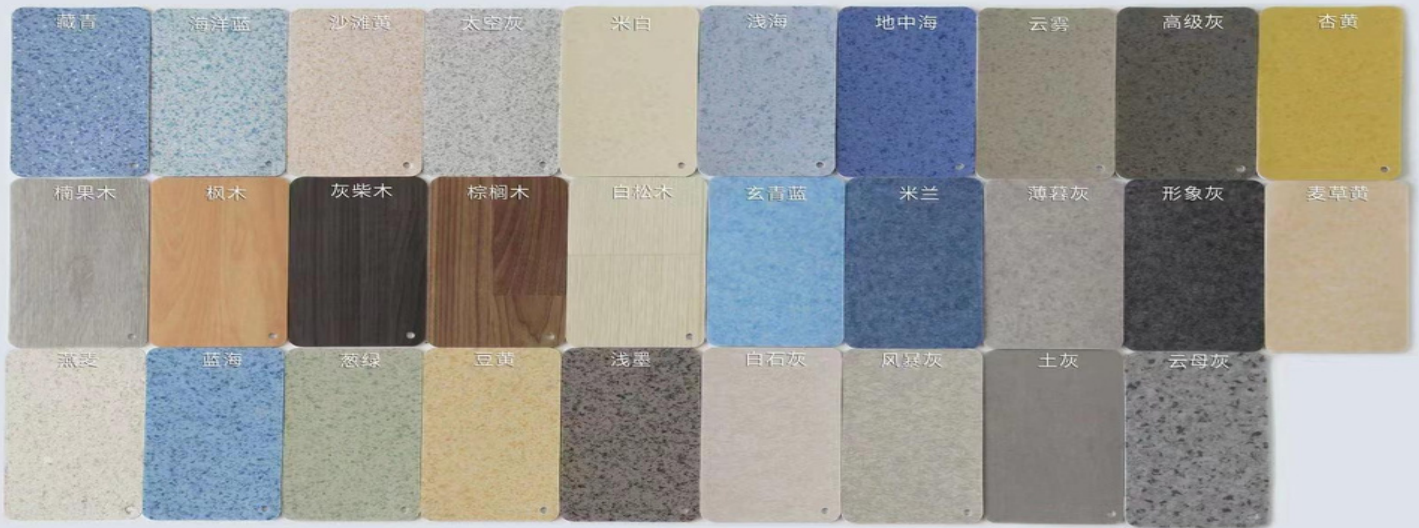


BATHROOM



FLOOR STYLE

2mm密实系列



EXPANDABLE MOBILE HOME”

The specifications of the 20ft mobile home

| Name | Specification | Size |
|-----------------|---------------------------------------|--|
| Basic Features | External dimensions(mm) | W6300*L5900*H2480 |
| | Internal dimensions(mm) | W6140*L5640*H2260 |
| | Folding state(mm) | W2200*L5900*H2480 |
| | Total weight (kg) | 2500 |
| Frame Structure | Roof beam | T2.5mmQ235B |
| | Insole beam | T2.5mmQ235B |
| | End side beam | T2.5mmQ235B |
| | Center column | T2.5mmQ235B |
| | Side wall frame | T2.0mmQ235B |
| | Secondary frame | T2.0mmQ235B |
| | Hanging head | T4mmQ235B |
| | Folding hinge | 13mm galvanized hinge |
| | Overall frame protective coating | Electrostatic spray/straight white plastic powder |
| | Top and bottom of middle cabinet | 80*100*2.5mm square tube |
| | Side cabinet top and bottom | 40*60*2.0 mm square tube |
| Top of Box | External top plate | T0.5mm galvanized sheet |
| | Internal ceiling | T0.35mm 831 type internal ceiling |
| Wallboard | Middle roof insulation | T65mm high strength EPS, steel plate or T65mm glass wool |
| | Side wall, front and rear wall panels | T65mm high strength EPS, steel plate or T65mm glass wool |
| | Internal partition | T65mm high strength EPS, steel plate or T65mm glass wool |
| | Internal toilet | 1700*1500(can adjusted size) |

EXPANDABLE MOBILE HOME

| Name | Specification | Size |
|-------------------|--|--|
| | Central part | Fireproof glass magnesium floor (15mm) |
| Electrical System | | |
| | Electrical wiring, installation in strict accordance with moisture-proof specifications, all electrical products must meet CE certification. Connection circuit according to circuit engineering specifications, indoor: 2 LED lights, 2 ceiling lights, 5 single socket 3, single socket 1, 10 socket 3, air conditioning socket 1, 20A leakage protector | |
| | Voltage: 220V,50HZ. Can do American standard, European standard, Italian standard, Australian standard and other national standard sockets and voltages | |
| | Security Doors 1 set (can adjustable door size and quantity and position) | |
| | Windows 8 pieces (920*920mm) | |
| | Service Life 30 years | |
| | Fire rating A | |
| | Seismic grade 8 | |
| | Wind resistance level 12 | |
| | Earthquakeresistance grade 8 | |
| | Can come wheelchair accessible by request | |

T R A N S P O R T A T I O N



RAW MATERIAL

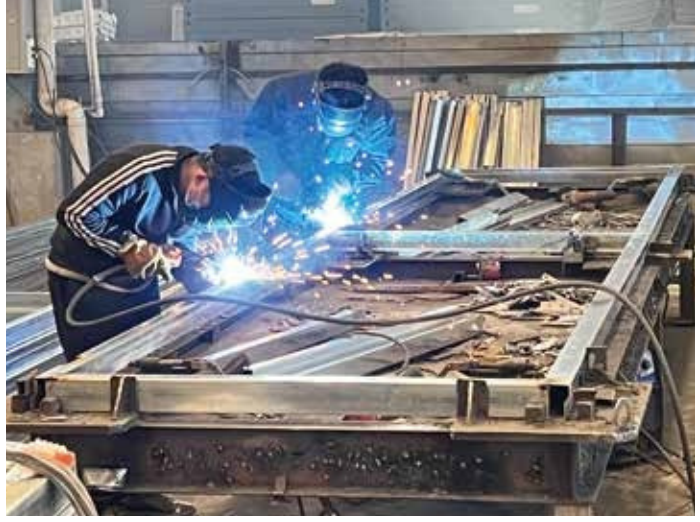


OUR CUSTOMER

We have customers from over 40 countries, also negotiate with clients in embassy about some big projects. The quality and after sales service are satisfied by clients.



FACTORY



The word "PINK" is written in a stylized, blocky, white font. The letter "I" is replaced by a teal-colored key icon. The entire logo is centered within a red-outlined shield shape.

PINK

REAL ESTATE INVESTORS