

What Do You See Photo Challenge 2022



A photo challenge for Niagara photographers who are interested in the opportunity to see through the lens of fellow photographers as a source of inspiration.

- We are back with 6 locations spread across Niagara !
- Visit each of the 6 locations below and take photos.
- You can do them all in one day or different days, time etc. Please stay as close to the designated spot or area as possible when taking your shots or it will defeat the purpose. Don't be afraid to get creative with your photos. Remember this is the "what do you see" photo challenge, so make us "see what you see".
- When you have shot all the locations, pick your **one** best photo from each location and process the 6 images to your liking, anything goes.
- Resize your 6 images to maximum 1920 pixels wide x 1080 pixels high in JPG format.
- **Rename each jpg image file starting with the number of the location and then your name. As an example an image from location 3 will be called "3 Joe Smith". Name it just like this, no # or _ please**
- After resizing and renaming your 6 jpg images, email them to me **dropdcreighton@gmail.com** to complete your submission.
- Deadline for submissions is **October 12th 2022**.

Here's the best part;

Your images will be assembled into a slideshow with the other participants and shown in the order of locations. That way all of us can draw on the inspiration in seeing what other photographers see with different interpretations of the same scene. It is a great way to expand what you see and photograph, as well as a great excuse to go out and shoot!

The slideshow will premiere at a Welland Camera Club meeting on October 26th 2022. After that evening it will be uploaded to YouTube for all of us to enjoy. See <http://www.wellandcameraclub.com/> for location & time.

Check out these past challenges:

The 2014 challenge can be viewed here ! <https://www.youtube.com/watch?v=I5bCzKiIL7w>

The 2015 challenge can be viewed here ! <https://www.youtube.com/watch?v=stmMf7vIJAs&t=2s>

The 2017 challenge can be viewed here ! <https://www.youtube.com/watch?v=YbcFlhRWsHU&t=30s>

The 2018 challenge can be viewed here ! <https://www.youtube.com/watch?v=apXJvJ4rxT8&t=5s>

The 2019 challenge can be viewed here ! <https://www.youtube.com/watch?v=oGoiIgxW4yE&t=2s>

FAQ's

Is there a cost to participate?

There is no cost. The challenge is free.

Do I have to be a member of a Camera Club?

No, you don't need to be a member of any club. All are welcome to participate. You are also welcome to come see the premiere on the 26th October 2022.

Is this a competition?

It's not a competition, just a creative exercise for us all.

Will my Photos be used for anything else?

Absolutely not, your photos will be in a slideshow posted on YouTube for the purposes of this challenge only.

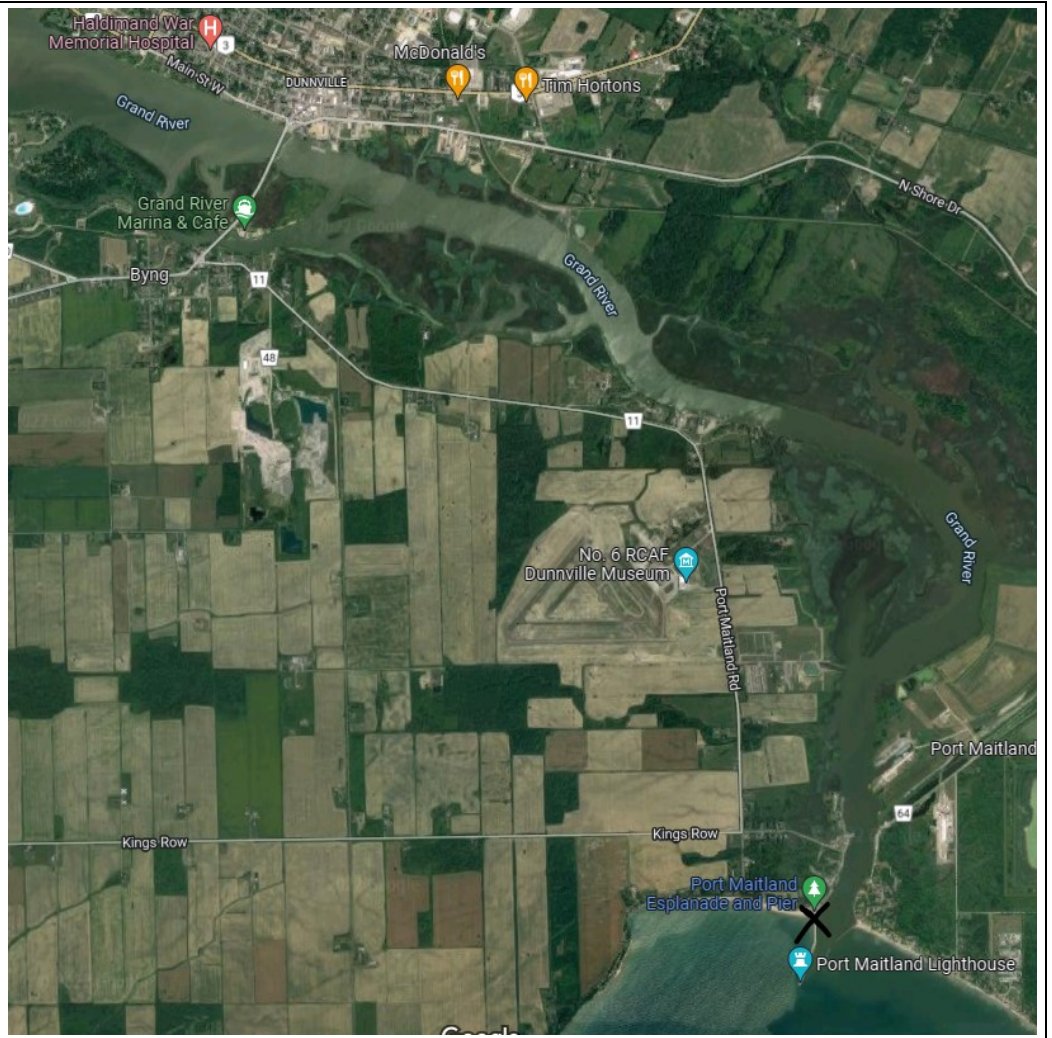
Have Fun !

Darren Creighton

1

Port Maitland Lighthouse

At the end of "The Esplanade" Road in Port Maitland is the Lighthouse. This spot can produce fantastic images that showcase the sky and weather.



2

Dunnville Wind Turbines

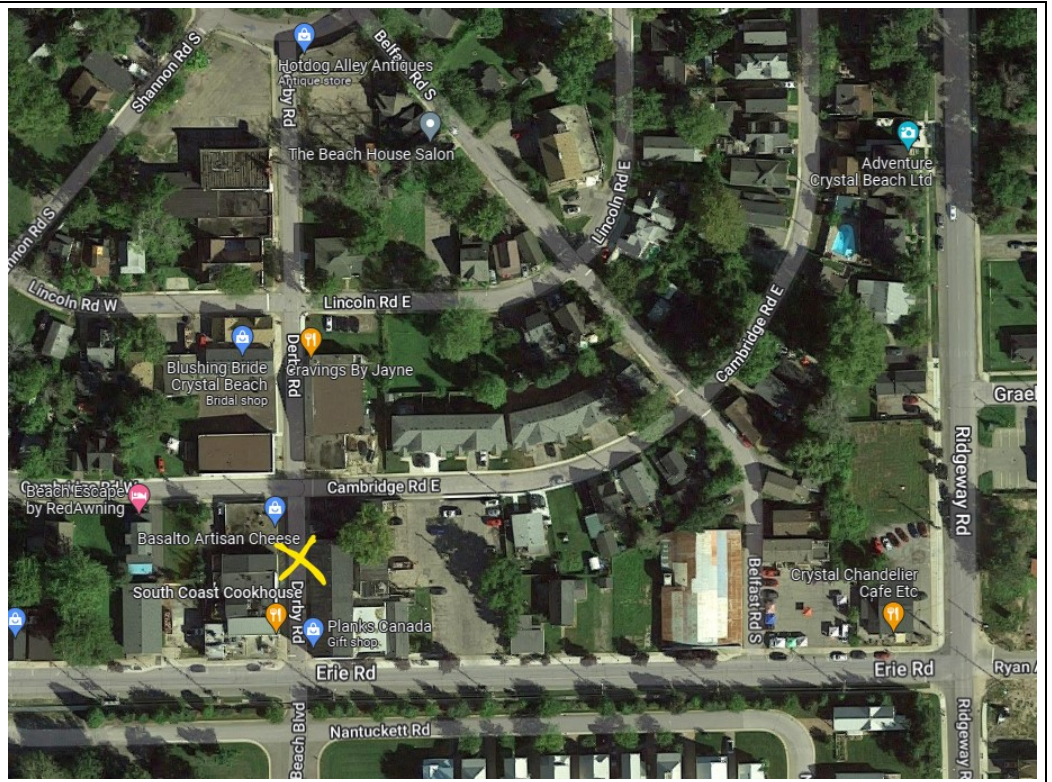
Very close to the Lighthouse on Port Maitland Road just south of the RCAF Dunnville Museum. Pull over on the side of the road and looking West there is a grand vista of Wind Turbines. Another showcase for the sky and weather.



3

Derby Street Crystal Beach

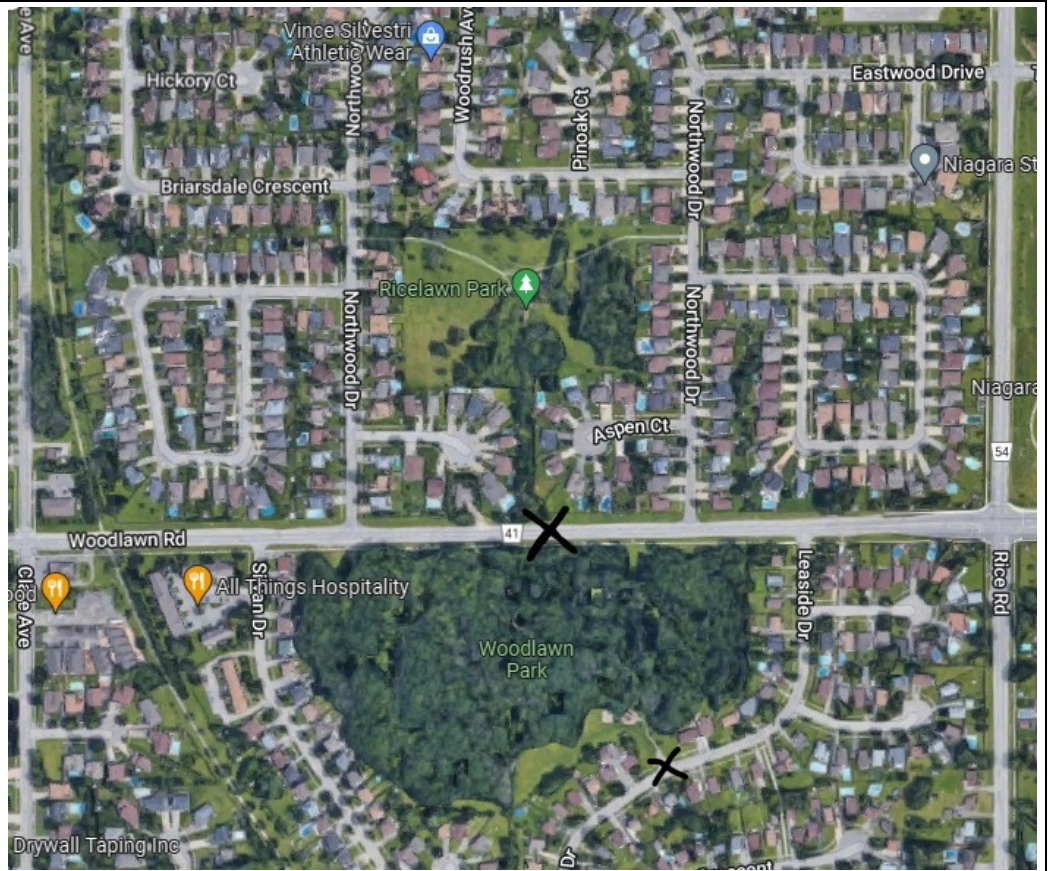
In Crystal Beach there is a great little spot. Derby Street between Erie Rd & Lincoln Rd. Formerly known as "hotdog alley" in the good old days. This little stretch of street is being revitalized and has nice character. You're sure to find something or someone to photograph in the summer.



4

Woodlawn Park

This wooded park is located on Woodlawn Road in Welland between Rice Road & Clare Ave. You can park on Woodlawn where there are two large tree logs on the ground showing you a path in. Or you can park on Leaside Drive and enter through the small playground that is connected to the back of Woodland Park. Best to go when the conditions are dry as this park has a lot of low areas that stay muddy.



5

Isaac Riel Memorial Skatepark

In Fonhill near the corner of Highway 20 & Pelham St. Enter on Park Lane from highway 20. This is a beautiful skatepark. If you are there at the right time you may be able to catch some skaters or BMX action. If not, the lines and curves can be an enticing subject.



6

Meridian Center Access Tunnel

Located between St Paul Street & the Meridian Center in St Catharines. You can park in a little parking lot right on David S. Howes Way. Walk up the stairs, this tunnel gives access to St Paul Street above. It has lots of graffiti and there is tons of potential here to play with light.

