

**Images showing distinct dental patterns due to licit drug abuse**



Figure 1: Nicotine stains on teeth<sup>[8]</sup>



Figure 2: Methadone-induced dental changes<sup>[2]</sup>



Figure 3: Black hairy tongue<sup>[9]</sup>



Figure 4: Degree I tetracycline stains<sup>[10]</sup>



Figure 5: Degree II tetracycline stains<sup>[10]</sup>



Figure 6: Degree III tetracycline stains<sup>[10]</sup>



Figure 7: Minocycline-induced staining of lower (*Left image*) and upper (*Right image*) anterior teeth<sup>[3]</sup>



Figure 8: Minocycline-induced discolouration of roots<sup>[3]</sup>



Figure 9: Compound Analgesics<sup>[11]</sup>



Figure 10: Chlorhexidine-induced stains<sup>[4]</sup>



Figure 11: Clofarabine-induced tooth discolouration<sup>[5]</sup>



Figure 12: *Left*: Maxillary occlusal view depicting carious upper incisors and relatively 'intact' posterior teeth; *Right*: Frontal view depicting generalised cervical caries <sup>[12]</sup>



**Images showing distinct dental patterns due to Illicit drug abuse**



Figures 1: "Meth mouth", a long-term methamphetamine user with rampant dental caries<sup>[13]</sup>

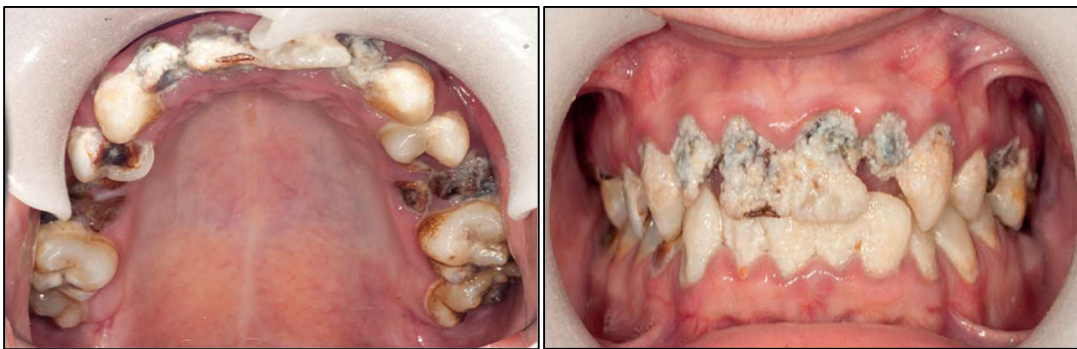


Figure 2: Oral presentation of a cannabis user<sup>[1]</sup>



Figure 3: Palatal destruction due to cocaine use<sup>[7]</sup>



Figure 4: Mucosal fenestration defect associated with tooth 21 at the site of MDMA topical application<sup>[14]</sup>

Images showing distinct dental patterns due to chemical and element exposure



Figure 1: *Left*: Multiple cupped-out erosive depressions on cusp tips; *Right*: Erosive loss of enamel and dentin due to acidic fruit<sup>[8]</sup>



Figure 2: Dental discolouration due to amalgam<sup>[8]</sup>



Figure 3: Amalgam tattoo related to apicoectomy<sup>[16]</sup>



Figure 4: Types of dental fluorosis<sup>[15]</sup>



Figure 5: Burton's line along upper and lower gumlines<sup>[7]</sup>



Figure 6: *Left:* Discoloured tooth<sup>[6]</sup> and *Right:* Pseudo black hairy tongue<sup>[9]</sup> following bismuth ingestion



Figure 7: Extrinsic stains due to polyvalent iron metal salts<sup>[4]</sup>

## Image Credit, Source and References

1. Joshi S, Ashley M. Cannabis: A joint problem for patients and the dental profession. *British dental journal*. 2016;220(11):597-601.
2. Brondani M, Park PE. Methadone and oral health--a brief review. *Journal of dental hygiene*. 2011;85(2):92.
3. Sanchez AR, Rogers RS, Sheridan PJ. Review: Tetracycline and other tetracycline-derivative staining of the teeth and oral cavity. *International journal of dermatology*. 2004;43(10):709-15.
4. Sulieman M. An overview of tooth discoloration: extrinsic, intrinsic and internalized stains. *Dental update*. 2005;32(8):463-71.
5. Doval D, Sharma SK, Choudhary D, Kumar M, Khandelwal V. Clofarabine-induced bluish discolouration of teeth. *British journal of haematology*. 2019;187(3):274-.
6. de Carvalho Machado C, Dinis-Oliveira RJ. Clinical and Forensic Signs Resulting from Exposure to Heavy Metals and Other Chemical Elements of the Periodic Table. *Journal of clinical medicine*. 2023;12(7):2591.
7. Pearce JMS. Burton's Line in Lead Poisoning. *European neurology*. 2007;57(2):118-9.
8. Damm DD, Allen CM, Chi AC. *Oral and maxillofacial pathology*. Fourth edition. ed. St. Louis, Missouri: Elsevier; 2016.
9. Mangold A, Torgerson R, Rogers R. Diseases of the Tongue. *Clinics in dermatology*. 2016;34(4):458-69.
10. Newsome PRH, Greenwall LH, editors. *Management of tetracycline discoloured teeth* 2008.
11. Petrovečki V, Čarapina M, Strinović D, Kovačić Z, Nestić M, Mayer D, et al. Dental discoloration and erosion resulting from addiction to compound analgesics. *Acta Stomatologica Croatica*. 2011;45(4):287-94.
12. Siu AS, Chu FC, Yip HK. Cough Syrup Addiction and Rampant Caries: A Report of Two Cases. *Primary Dental Care*. 2002;os9(1):27-30.
13. Hamamoto DT, Rhodus NL. Methamphetamine abuse and dentistry. *Oral diseases*. 2009;15(1):27-37.
14. Dhariwal DK, Brazier WJ, Patton DW, Bishop K. Ecstasy related periodontitis and mucosal ulceration - a case report. *British dental journal*. 2003;194(4):197-9.
15. Srivastava R, Tangade P, Priyadarshi S. Managing dental fluorosis: A guide to improving appearance of the teeth. *Arch Dent Res*. 2023;13(1):25-9.
16. Woo S-b. *Oral Pathology*. 3rd edition. ed. Amsterdam: Elsevier; 2023.