

Constructing resilient systems in the conservative south



Presented by: Kindall Brantley and Makenna Coon

Restorative Agriculture Program, Grounds Department, The College of Charleston, Charleston, SC. USA

Conservatism

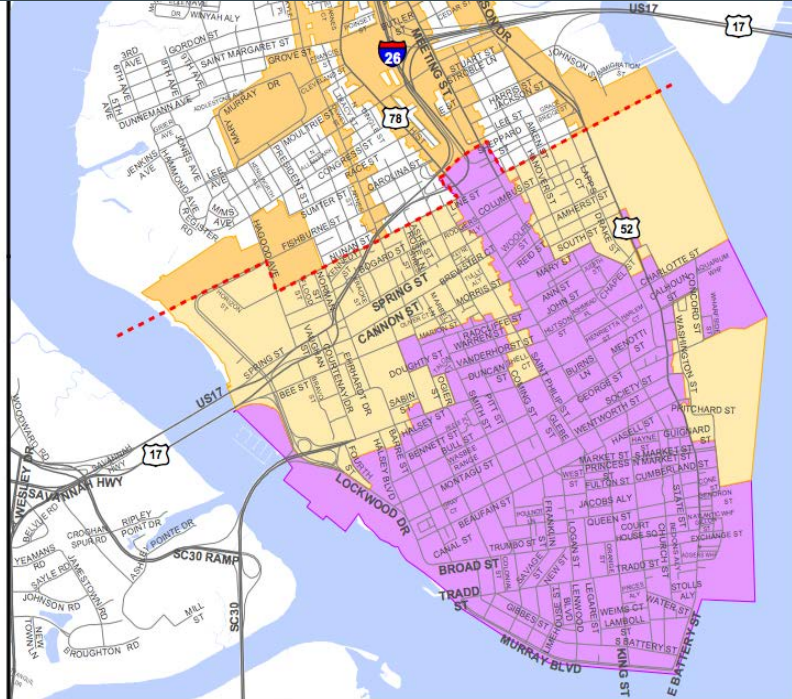
An attitude that is resistant to change and desires to maintain tradition.



The City of Charleston



Historic Charleston District



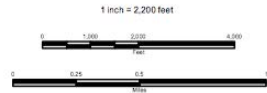
Old and Historic District

- - - Old City Line
- Highways
- Streets
- Old City District - Upper
- Old City District - Lower
- Old and Historic District
- Water

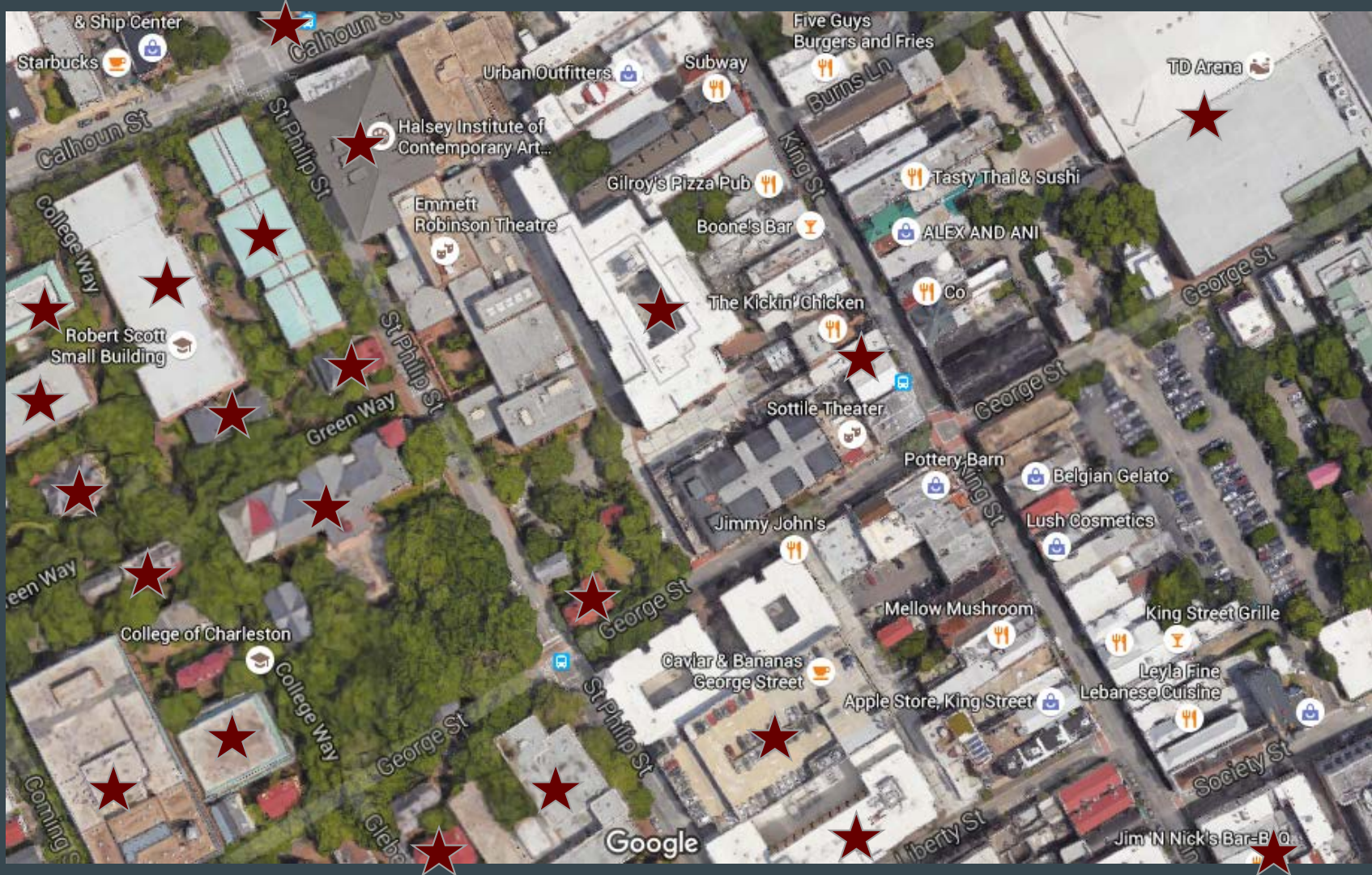


City of Charleston
 Planning, Preservation and Sustainability Dept.
 GIS Division
 75 Calhoun St, Third Floor
 Charleston, SC 29401
 843.724.3787
 www.charleston-sc.gov

© Copyright 2012 City of Charleston
 All Rights Reserved



Map created 11/9/2012



The College of Charleston



C of C's National Historic Landmarks



Restorative Agriculture Program Beginnings



Political Science Department Courtyard



7 College Way



McAlister Residence Hall Courtyard



Warren Place



A photograph of a field of yellow flowers, possibly sunflowers, with green foliage. The image is dimly lit, and the word "Limitations" is overlaid in the center in a large, white, sans-serif font.

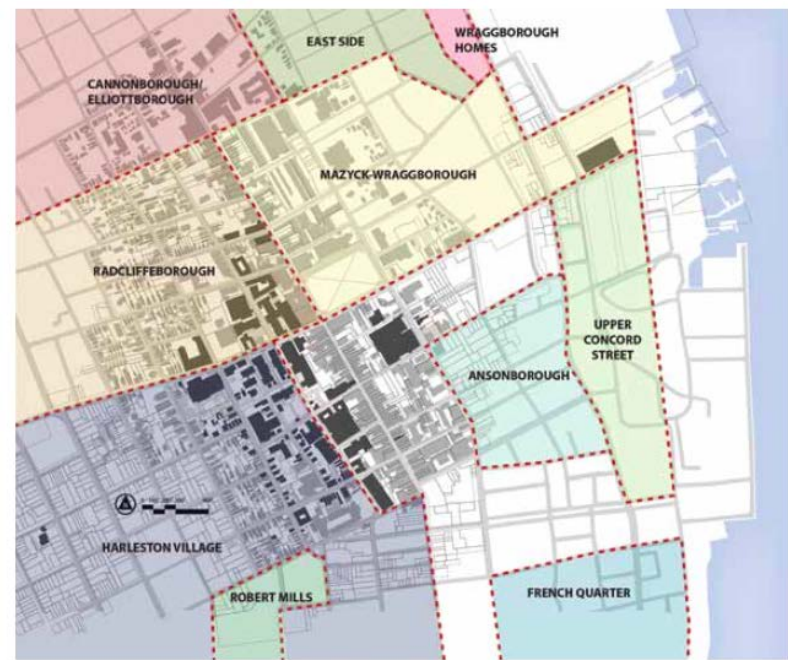
Limitations

Development in Charleston



“ . . . preserve and protect historical, architectural, and material culture of Charleston’s rich and irreplaceable heritage”

Restrictive Development



Neighborhoods

The physical place that is historic Charleston is both uniquely inspiring and constraining for an evolving institution like the College.



Restrictive Development



City of Charleston Zoning Map

ZONES

GB General Business

LB Limited Business

DR-1F Diverse Residential (19.4 units/acre)

DR-2 Diverse Residential (26.4 units/acre)

Height Districts



1909



2016

Land Acquisition

PHASE ONE GSF

1	Existing Science & Math Bldg - Build-out	
2	Rita Hollings Science Center Renovation	
3	Simons Center for the Arts Reno/Exp	
4	Yaschik Arnold Jewish Studies Expansion	15,000
5	350-Bed Residence Hall (location TBD)	TBD
6	Learning Technology Center	45,000
7	Fitness Center / Mixed Use	40,000
8	Alumni Center / Meeting Space	20,000
TOTAL GROSS SQUARE FOOTAGE		120,000

PHASE TWO

9	Honors College (Admissions ground level)	78,000
10	School of Ed. Health & Human Performance Reno/Exp	35,000
11	Athletics - ground floor	10,000
12	Business School Expansion	40,000
13	Student Health Services	7,000
14	Academic Building - General Classroom	45,000
15	Academic Building - Classroom Upgrade & Recovery	50,000
16	125-Bed Residence Hall (Craig Hall Replacement)	45,000
17	Stern Student Center Renovation / Expansion	48,000
TOTAL GROSS SQUARE FOOTAGE		358,000

PHASE THREE

18	Academic Building - Language, Culture, & World Affairs	41,000
19	New Sciences & Mathematics Building	128,000
20	Expansion of St. Philip Street Garage / Chiller Plant	10,000
TOTAL GROSS SQUARE FOOTAGE		179,000

PHASE FOUR

21	Academic Building - Thaddeus Street Education Ctr.	78,000
22	New Parking Deck	
23	Residence Hall Replacement (College Lodge), parking below	60,000
24	Graduate Center	8,000
25	Future Academic or Administration Space	60,000
TOTAL GROSS SQUARE FOOTAGE		206,000

ALL PHASES TOTAL 863,000



Building and Open Space Phasing

OPEN SPACE PROJECTS

- A Calhoun Street Enhancements - paving, lighting, signage/banners, landscape, crosswalks
- B St. Philip Street Enhancements - widen sidewalk where possible, paving, lighting, landscape
- C George Street Enhancements (St. Philip St. to Meeting St.) - paving, landscape, signage/banners
- D New Green Space at existing Multicultural Center / campus gateway
- E George and Glebe Street Enhancements (Coming St. to St. Philip St.) - paving, amenities
- F Stern Student Center green space - activate space through programming & design
- G New Courtyard at Athletics / Education, Health, & Human Performance
- H New Sciences and Mathematics Building green space
- I New Courtyard at JC Long / Business School expansion
- J Coming Street Enhancements
- K Other Street Enhancements - Pitt St., Wentworth St., Liberty St., Vanderhorst St., Warren St.

Land Acquisition

SPACE NEEDS - SUMMARY FINDINGS

Existing Deficit 280,234 ASF in 2010

Overall Need for Additional **640,304 ASF by 2020**

Need for **266,026 ASF** Academic Space

Need for **127,219 ASF** Academic Support Space

Need for **247,059 ASF** Auxiliary Space



896,426 Gross Square Feet* by 2020

Must overlay Qualitative & Aspirational Needs:

Number of Students Housed on Campus

Student Life Amenities

Alumni Center

** GSF is calculated by multiplying the ASF by 1.4 to account for non-program building elements such as stairs, elevators, mechanical space, etc.*

Land Acquisition

The Campus Master Plan will help promote an intellectual community thoroughly “of the time,” engaging and innovative, while inextricably tied to the history and traditions of Charleston and the Lowcountry.

COLLEGE OF CHARLESTON ■ 2012 CAMPUS MASTER PLAN

Space is considered as much a College resource as human capital and revenue dollars.

Land Tenure Practices

Land Tenure Definition by FAO:

“rules invented by societies to regulate... how property rights to land are to be allocated between societies”

’ Tradition, Iconicism, Aestheticism, Capital
Gain

’ High Maintenance, Short Term, Expensive

Recent Inn Purchase



A photograph of a field of green plants with yellow and orange flowers, overlaid with a dark semi-transparent filter. The word "Solutions" is written in white, bold, sans-serif font in the center of the image.

Solutions

Pollinator Gardens



Resiliency through Positive Place Making



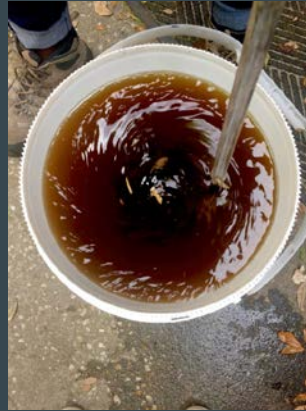
Resource Weaving



Restorative Land Tenure

- ' Long Term, Regenerative
 - ' Sheet Mulching, Crop Rotation, Perennials, Forest Farming, Vertical

Filling Gaps in Higher Ed



Abundance and Diversity



Future Plans

What we envision:

Interdisciplinary Research
and development

Co-teaching rest. ag. and
urban ag. track

Full scale farm as classroom

High production

Student run CSA



Acknowledgements and Literature Cited

ACKNOWLEDGEMENTS

The authors would like to thank the following for their revisions, support, and contributions: The College of Charleston, Peggy Cieslikowski, Paty Cowden, Colin Crane, Beverly Kalinowski, Mark Kalinowski and Carl Maass.

Literature Cited

2012 College of Charleston Campus Master Plan. (2012).

<http://masterplan.cofc.edu/images/2012%20Campus%20Master%20Plan.pdf>.

The Atlantic. (2012). <http://www.theatlantic.com/politics/archive/2012/11/red-state-blue-city-how-the-urban-rural-divide-is-splitting-america/265686/>

Bermann, K, and Marinaro, I.C. (2014), 'We Work It Out': Roma Settlements In Rome And The Limits Of Do-It-Yourself. *Journal of Urbanism: International Research on Placemaking and Urban Sustainability*. 7(4), 399-413.

Board of Architecture Review. (2005-2014). <http://www.charleston-sc.gov/index.aspx?NID=293>.

CBS News. (2010). <http://www.cbsnews.com/news/and-the-most-conservative-state-in-the-union-is/>

The College of Charleston. (2016). <http://www.cofc.edu/about/historyandtraditions/briefhistory.php>

The College of Charleston. (2016). <http://cofc.edu/about/historyandtraditions/collegetimeline.php>

The College of Charleston. (2016). <http://space.cofc.edu/guiding-principles/index.php>.

Fisher, P.B., (2014). Developing Whole-Systems Competency in Higher Education To Meet Emerging Market Demand and Societal Sustainability. *Sustainability*. 7 (1), 54-62.

Food and Agriculture Organization. (2002).

<http://www.fao.org/docrep/005/y4307e/y4307e05.htm>.

Historic Charleston Foundation. (2016). www.histoiccharleston.org.

MSNBC. (2014). <http://www.msnbc.com/msnbc/south-carolina-college-gay-books>.

Post and Courier. (2015).

<http://www.postandcourier.com/article/20150613/PC16/150619738>.

Post and Courier. (2015).

<http://www.postandcourier.com/article/20151203/PC16/151209808/college-of-charleston-x2019-s-shortfall-rises-to-21-million>.

Post and Courier. (2016).

<http://www.postandcourier.com/20160523/160529958/college-of-charleston-buys-historic-inn-for-32m>.

University of San Francisco. (2016). <https://www.usfca.edu/arts-sciences/undergraduate-programs/urban-agriculture>

Questions?

Facebook: College of Charleston Grounds Department

Instagram: @cofcgrounds

Website: www.grounds.cofc.edu

Email: kindallbrantley@gmail.com

coonmj@g.cofc.edu