

Generative Mapping:

Spatial Analysis & Community Food Resilience

Ellen Burke, PLA, ASLA

Assistant Professor of Sustainability in the Built Environment

Cal Poly San Luis Obispo

eburke02@calpoly.edu

Resilience

Resilience in social-ecological systems describes an ability to respond to and plan for change. It is an outcome and a process (Wilson, 2010) and can be developed through “engagement of community resources by community members” (Magis, 2010).

Wilson, G. (2010). Multifunctional 'quality' and rural community resilience. *Transactions of the Institute of British Geographers* 35(3).
Magis, K. (2010). Community Resilience: An Indicator of Social Sustainability. *Society & Natural Resources: An International Journal* 23(5).

Mapping

*“...only one version of the Earth’s surface, an eidetic fiction
constructed from factual observation.”*

– James Corner (1999)

Mapping

Participatory mappings integrate community perspectives in a visual spatial form which can empower citizens in decision-making, and raise awareness of local issues.

Community Food Maps Project



Goals

- Increase literacy in local food system issues
 - Enhance community development through spatial analysis
 - Support planning of local food infrastructure
-



Paradox of Plenty: A Community Roadmap for Overcoming Hunger in San Luis Obispo County

Food Bank Coalition of San Luis Obispo County
SLO County Food System Coalition

■ ■ ■ ■ ■ September 18, 2012



Assessing the San Luis Obispo County Food System

January 2014



UC DAVIS
AGRICULTURAL SUSTAINABILITY INSTITUTE
College of Agricultural and Environmental Sciences

CENTRAL COAST FOODSHED GUIDE

*Information and Resources for the Development of a Foodshed Identity
for the SLO County Region*

Prepared By

Kimberly B. Pasciuto, J.D.
Executive Director
Central Coast Ag Network
San Luis Obispo, CA

June 15, 2010

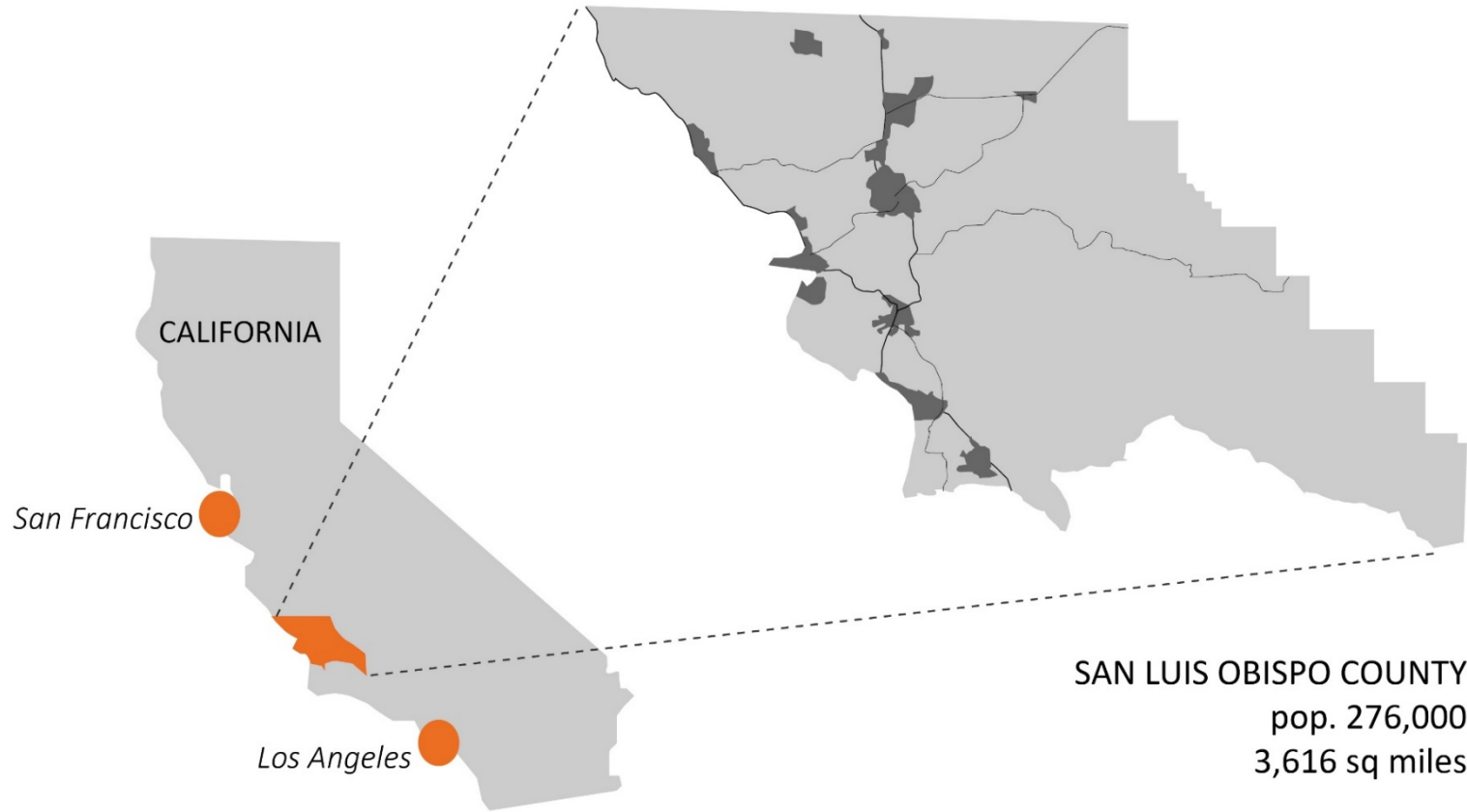
In Collaboration With

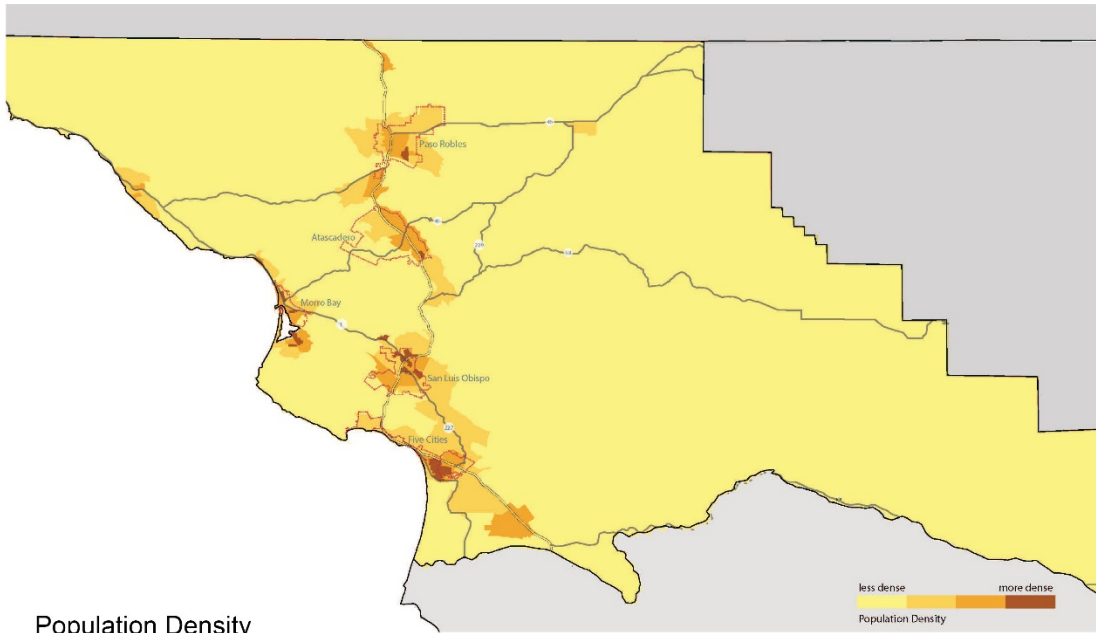


COLLEGE OF AGRICULTURE, FOOD & ENVIRONMENTAL SCIENCES
CALIFORNIA POLYTECHNIC STATE UNIVERSITY
SAN LUIS OBISPO, CA 93407
(805) 756-3086
CFS@CALPOLY.EDU

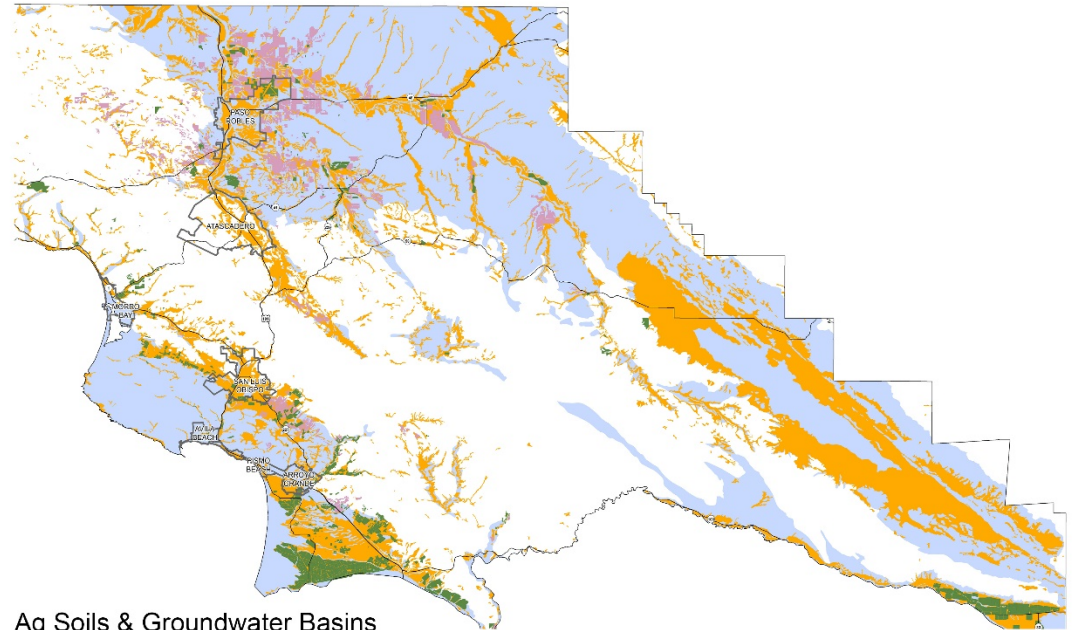
WWW.CFS.CALPOLY.EDU

Context

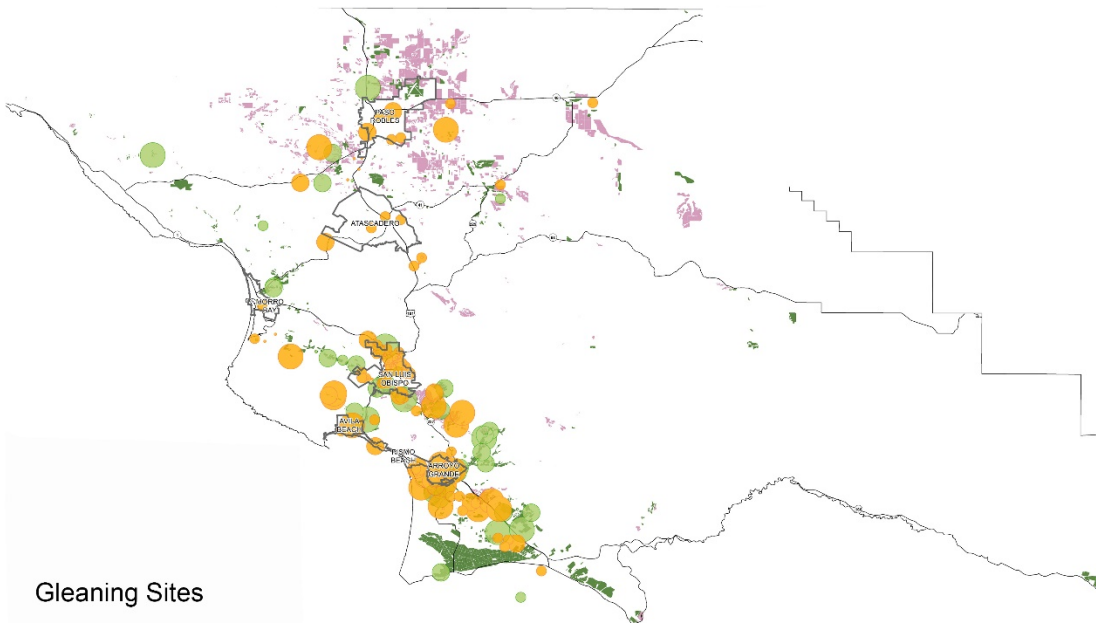




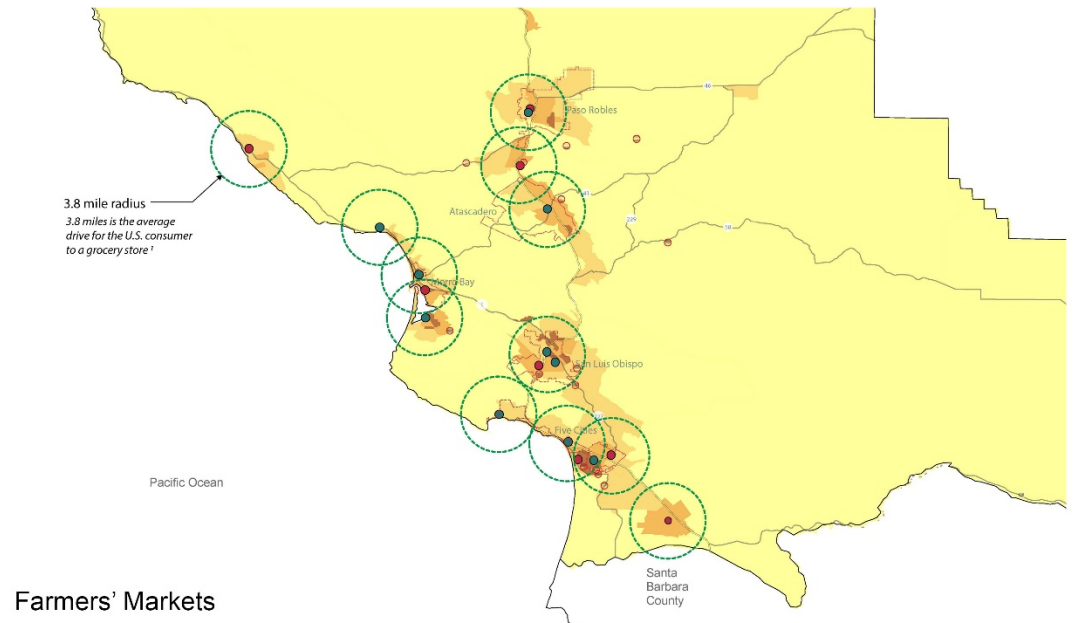
Population Density



Ag Soils & Groundwater Basins



Gleaning Sites



Farmers' Markets

Food Bank Atlas



Mission: “...work with a network of community partners to alleviate hunger in SLO County and build a healthier community.”

Serves 3,616 sq miles through 5 programs at 164 sites

Morro Bay

Income Level and Foodbank Distributions

Foodbank Distribution Sites

- Agency Partners
- Daily School Sites
- Farmer's Market
- Neighborhood Distribution
- Summer Lunch Sites

K-12 % of Students Enrolled in Free or Reduced Lunch

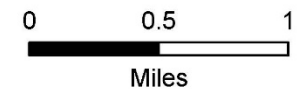
- ★ 0-50%
- ★ 51-69%
- ★ > 69%

2015 Median Household Income

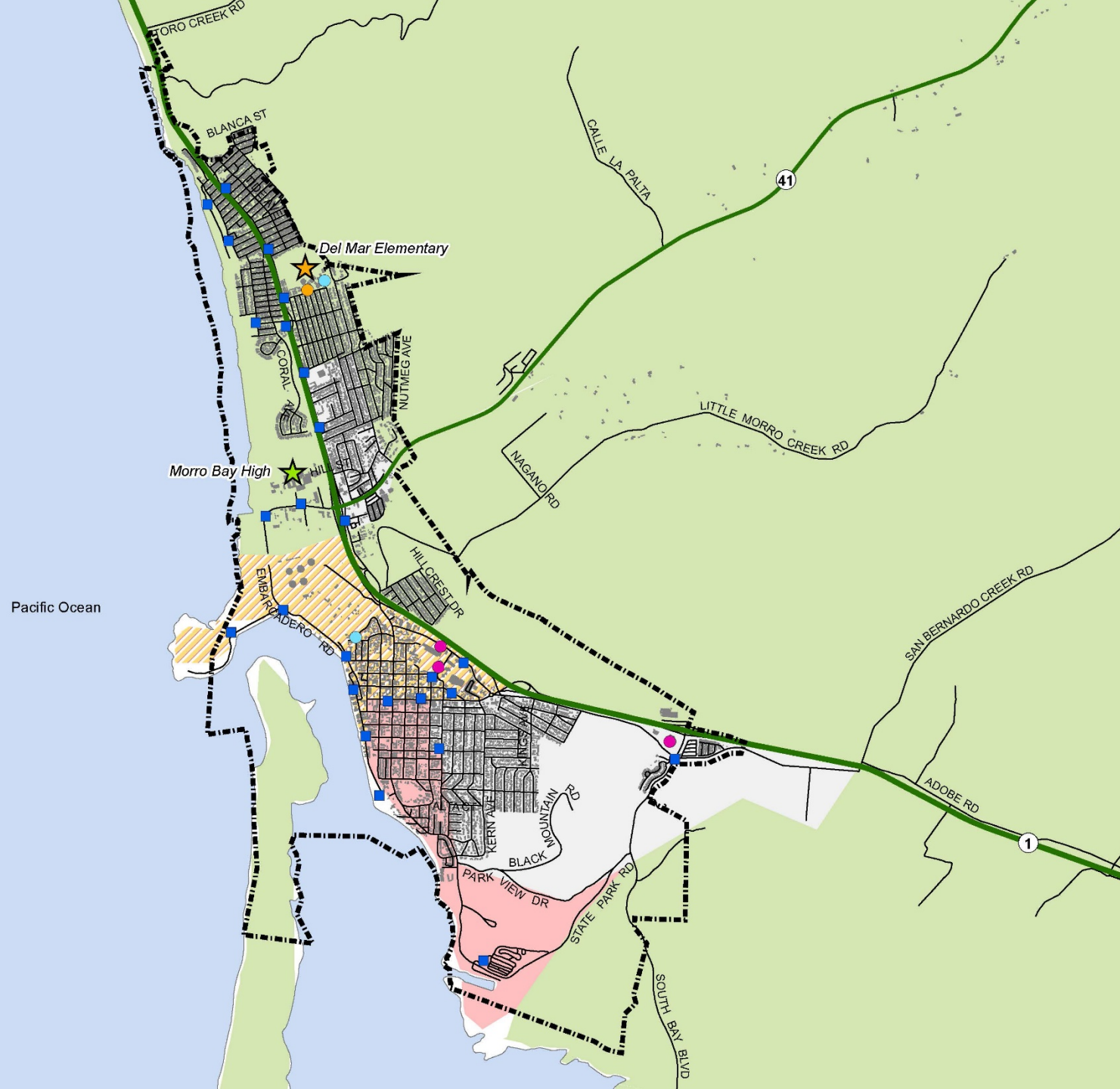
- ▨ \$0 - \$23,283 (Federal Poverty Line)
- ▨ \$23,284 - \$37,500 (CA Poverty Measure)
- ▨ \$37,501 - \$52,206 (Real Cost Measure)
- ▨ \$52,207+

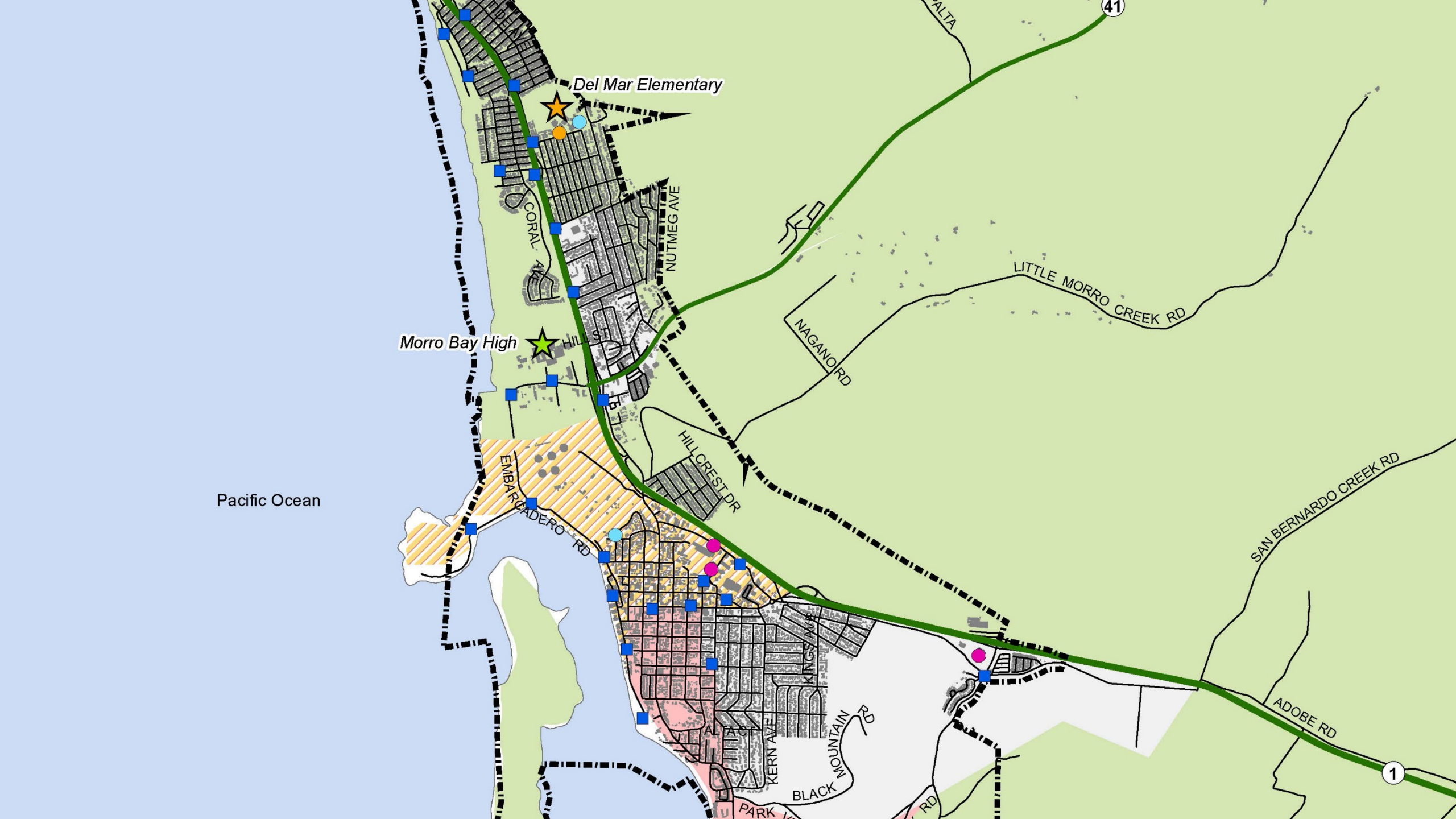
Transportation

- Transit Stops
- Roads
- US Highway
- State Highway



Date: 3/15/2016





Del Mar Elementary

Morro Bay High

Pacific Ocean

41

1

ALTA

LITTLE MORRO CREEK RD

SAN BERNARDO CREEK RD

ADOBE RD

NAGANORD

HILLCREST DR

EMBURY RD

NUTMEG AVE

CORAL AVE

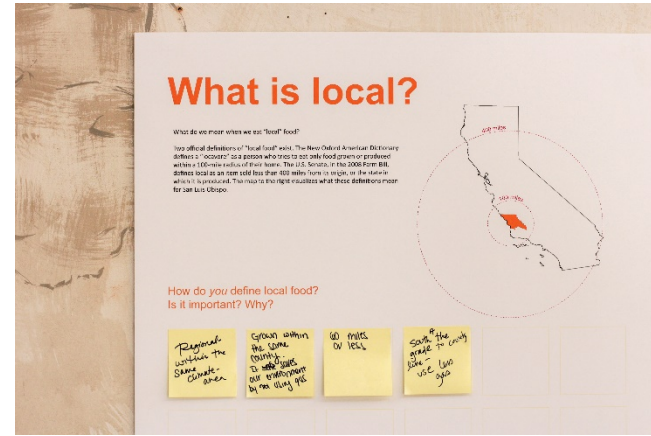
BLACK MOUNTAIN RD

PARK LN

KERN AVE

HILL ST

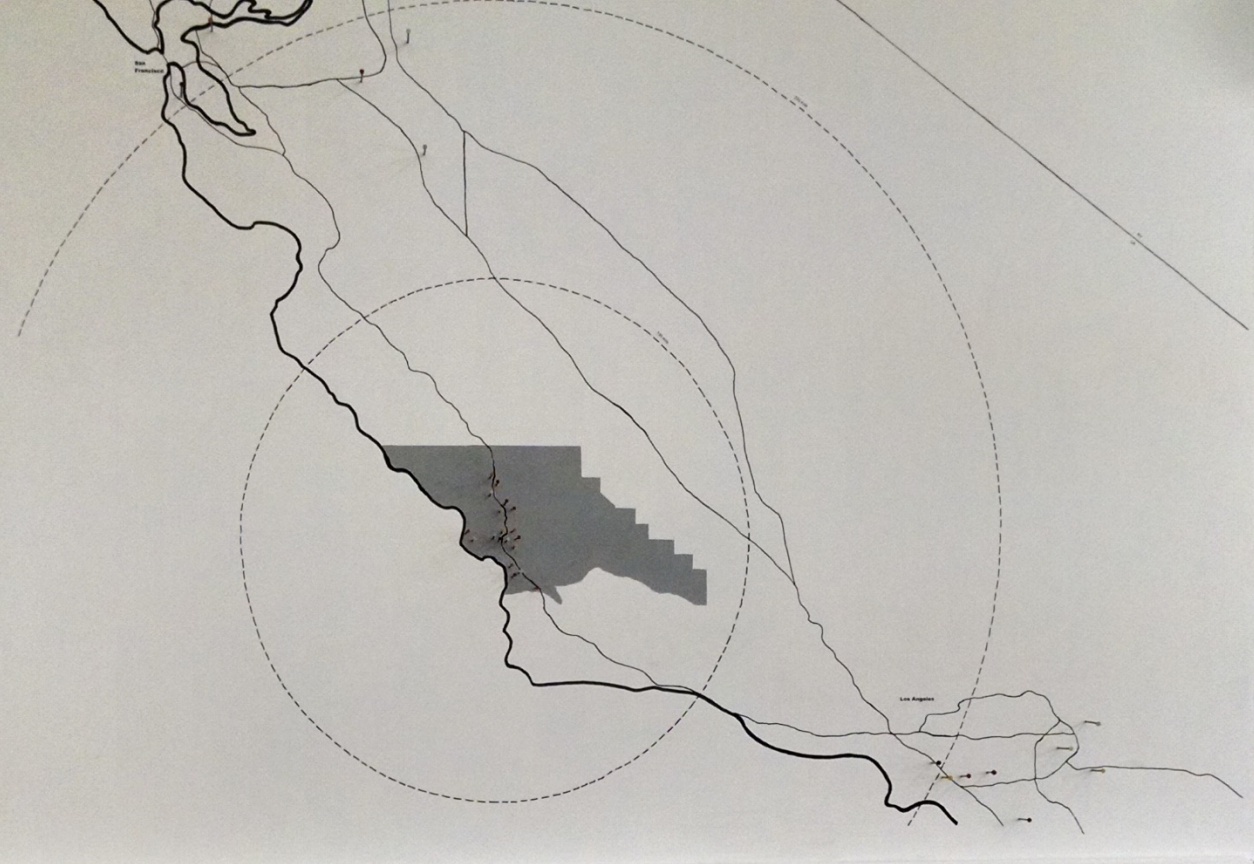
Community Mapping



What is local?



What do you define local food to be? (How far?) Why?



Foodshed Mapping

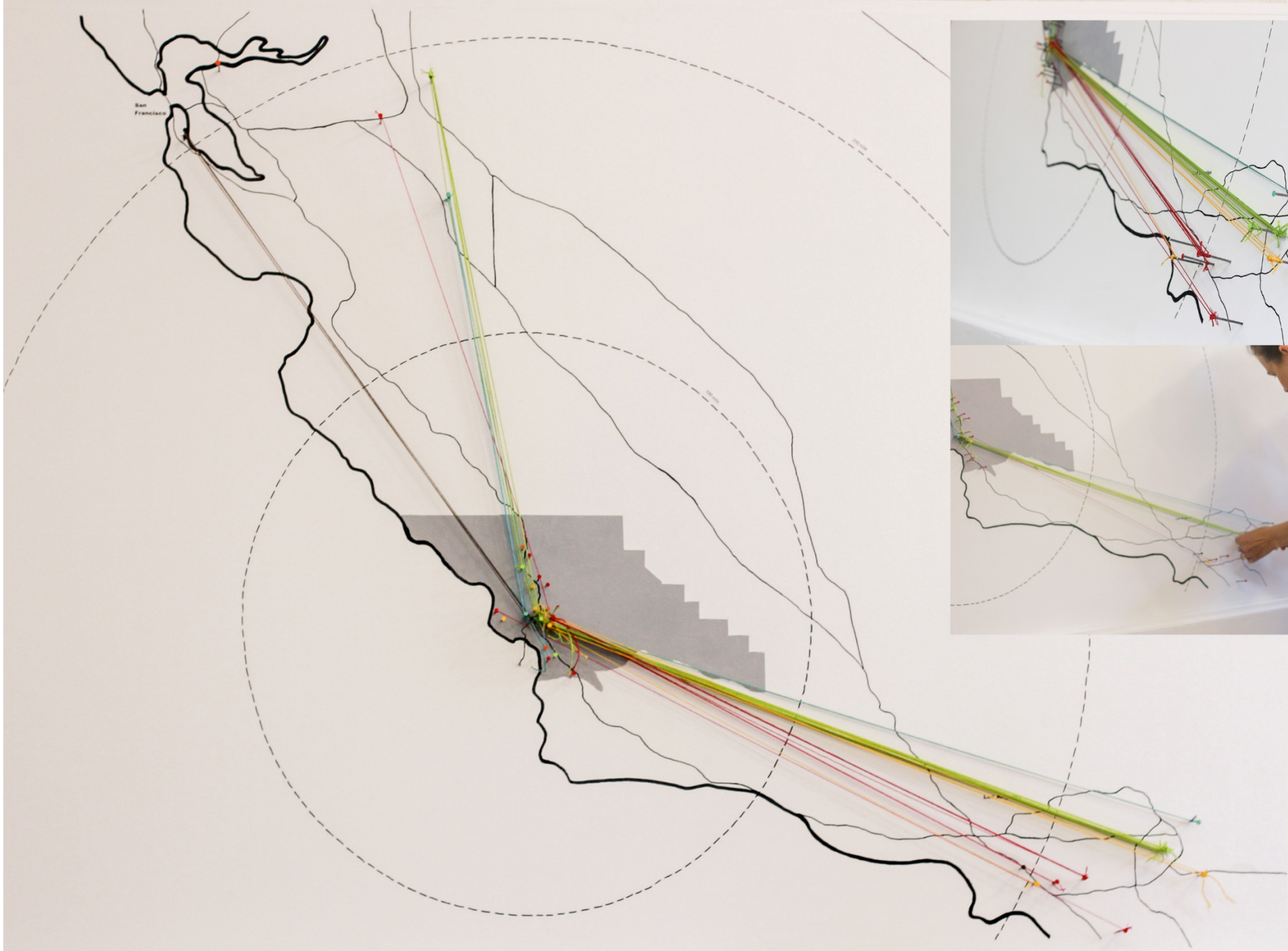
Mapping the last leg of our food's journey, from warehouse to store.

- KEY
- | | |
|-----------------------|-----------------|
| ● Albertsons/Arns | ● Smart & Final |
| ● Costco | ● Trader Joe's |
| ● Ralph's/Food 4 Less | ● Whole Foods |

Connect your grocery store with its distribution center using the color coded string to map our collective foodshed.

Made a masterpiece? Post a photo and hashtag #slomaps





Our Landscape
A community map of the peninsula

KEY

Light Green	Green
Dark Green	Light Blue
Blue	Yellow

Get involved in our landscape plan. All of our plans need to be approved by the community. Help us make our landscape plan better by sharing your ideas. We'll make sure your ideas are heard.

For more information, visit [www.ourlandscape.org](#)

Facebook | Instagram | Twitter



Conclusions

- Potential for maps to reveal overlaps, redundancies and gaps.
 - Brings community members' perspectives to the planning table.
 - Maps may need to be 'translated' to be widely used.
-



Ellen Burke, PLA, ASLA
Assistant Professor of Sustainability in the Built Environment
Cal Poly San Luis Obispo
eburke02@calpoly.edu