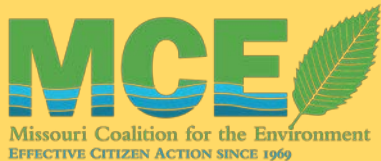
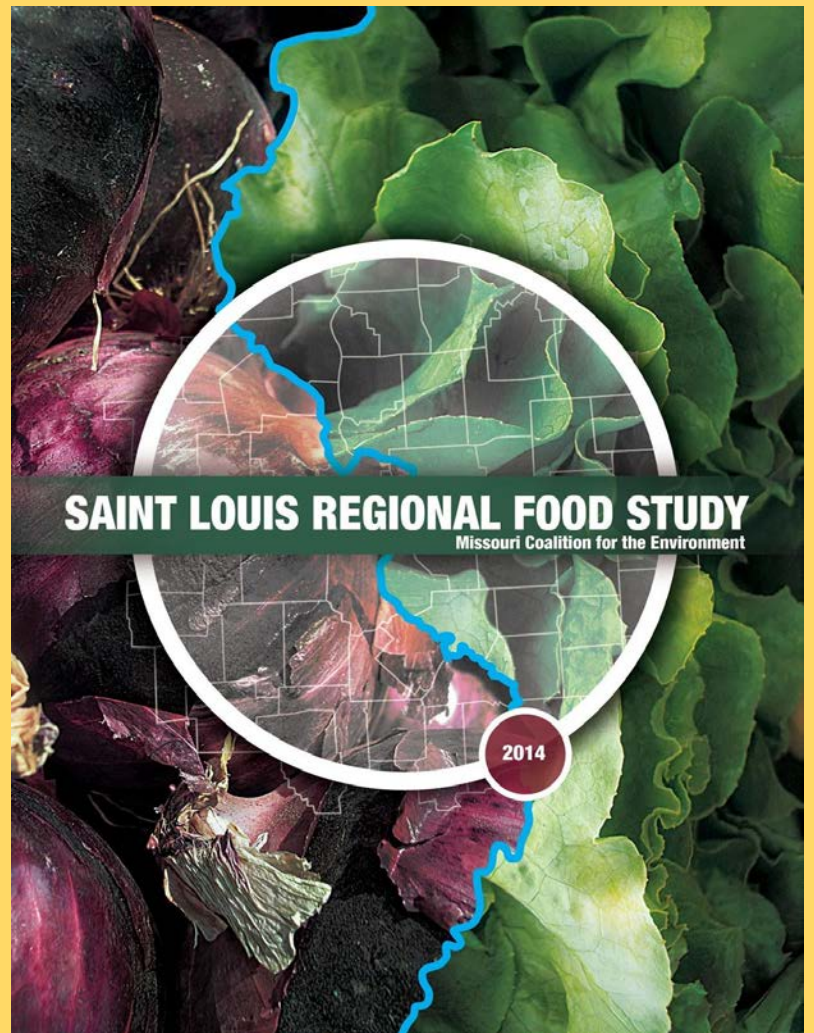


St. Louis Regional Food Study Evaluates the Evolution of Industrial Food Production and Its Impacts on Public Health, Economics, and Environment

Melissa Vatterott, Missouri Coalition
for the Environment

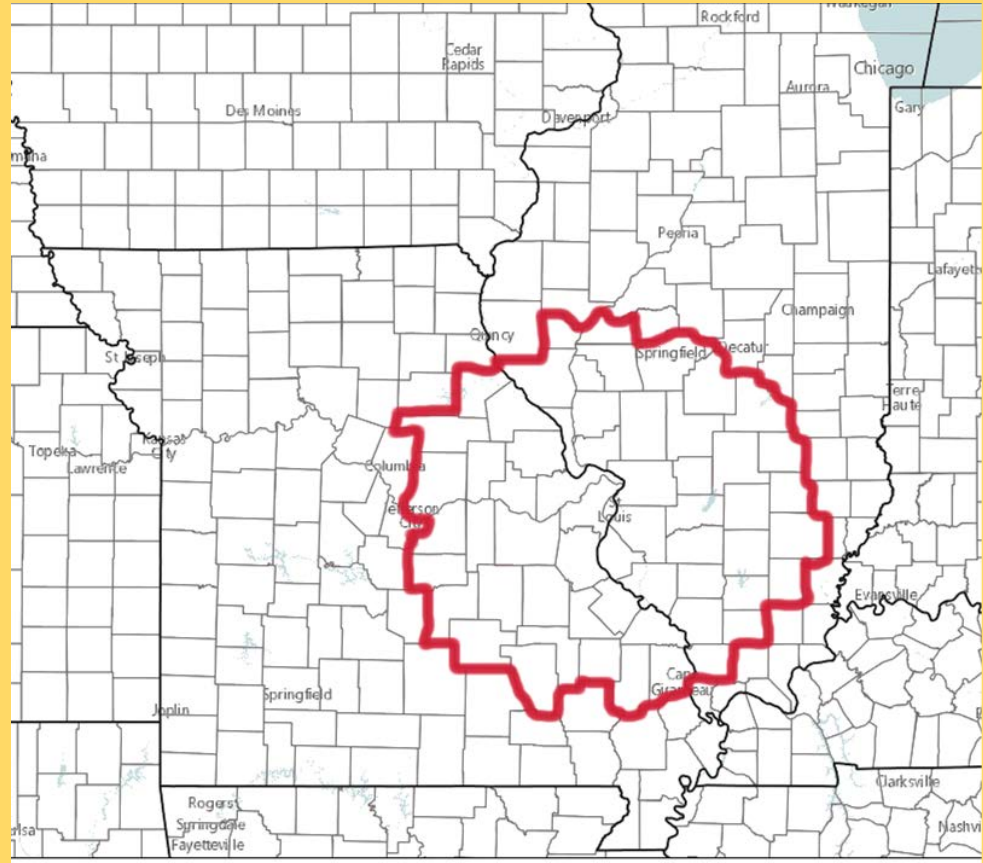


Missouri: 27 counties
Illinois: 32 counties



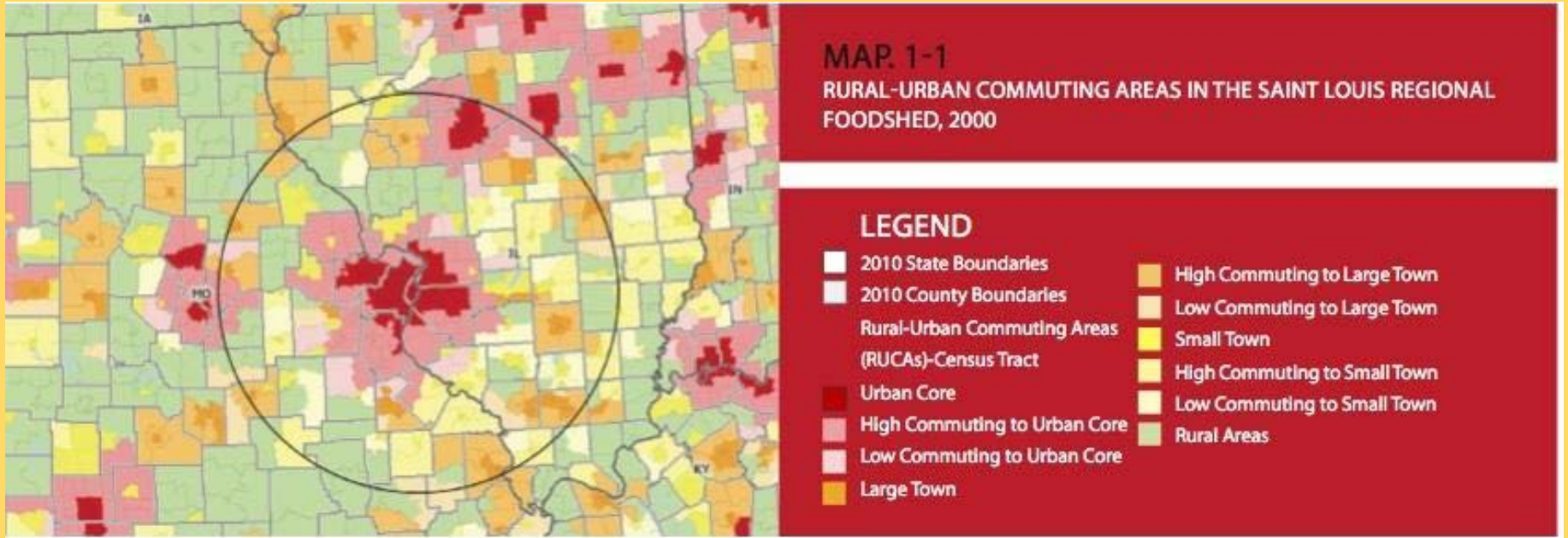
7 Chapters

1. People
2. Health
3. Economy
4. Land
5. What We Grow
6. What We Raise
7. Food Safety Concerns



People: 4 million

1.3 million live in the City of St. Louis and St. Louis County



Employment in the Foodshed

Foodshed Adult Population: 3,646,320

Agricultural Employment in 2012:

Foodshed Hired Labor: 28,903

Foodshed Unpaid Labor: 38,401

0.8% of the Adult Population



Food Dollars

In 2013, Foodshed population spent **\$16.8 billion on food**.

In the same year, farmers received a mere **10.5 cents** for every “food dollar” spent.

2013 food dollar (nominal), by industry group



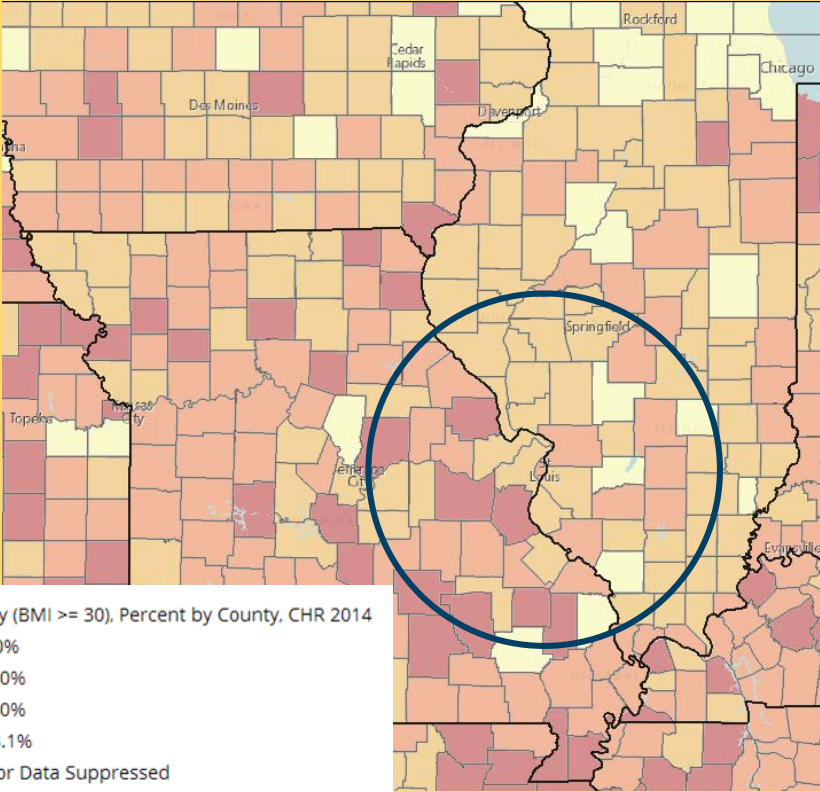
“Other” includes two industry groups: Agribusiness and Legal & Accounting.

Source: USDA, Economic Research Service, Food Dollar Series.

National Consumption Trends of Major Food Commodities

Food Group	USDA <i>Recommended</i> Consumption (Pounds/Year)	Per Capita Consumption (Pounds/Year), 2009
Total Grain Products	137 (half of which should be whole grains)	195
Total Meat	114-137	191
Vegetables (total)	375-548	391
Fruits (total)	274-365	257
All dairy products	548	607
Added fats and oils	22.8 (6 teaspoons per day)	79
Total Caloric Sweeteners	32.2* *Recommended max consumption if at all.	131

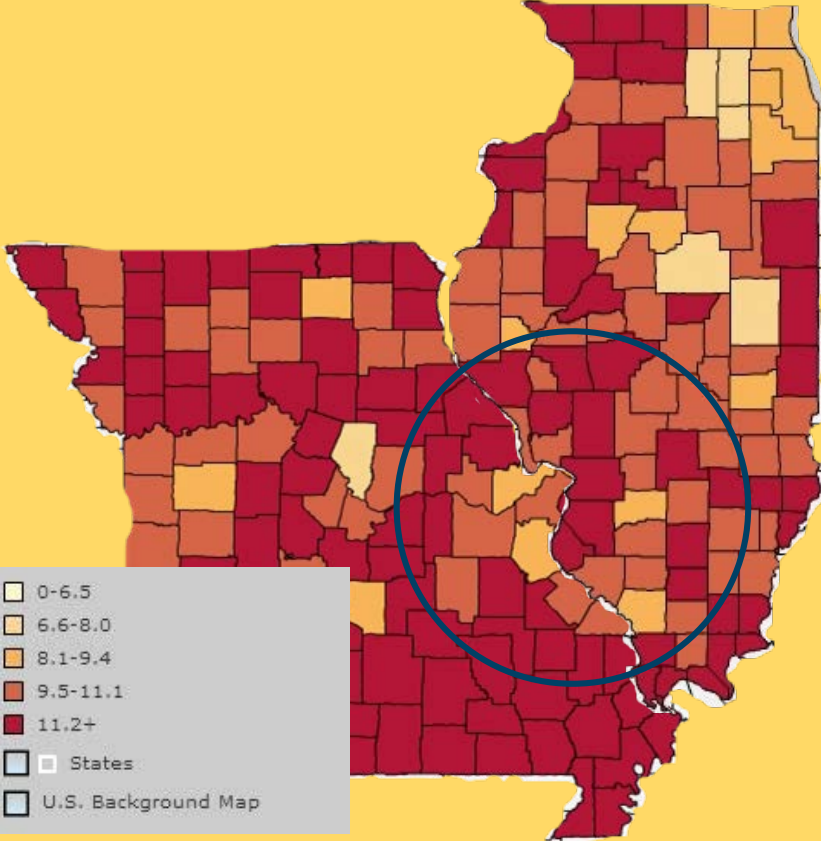
31% obesity rate (2010)



Adult Obesity (BMI >= 30), Percent by County, CHR 2014

- Over 34.0%
- 31.1 - 34.0%
- 28.1 - 31.0%
- Under 28.1%
- No Data or Data Suppressed

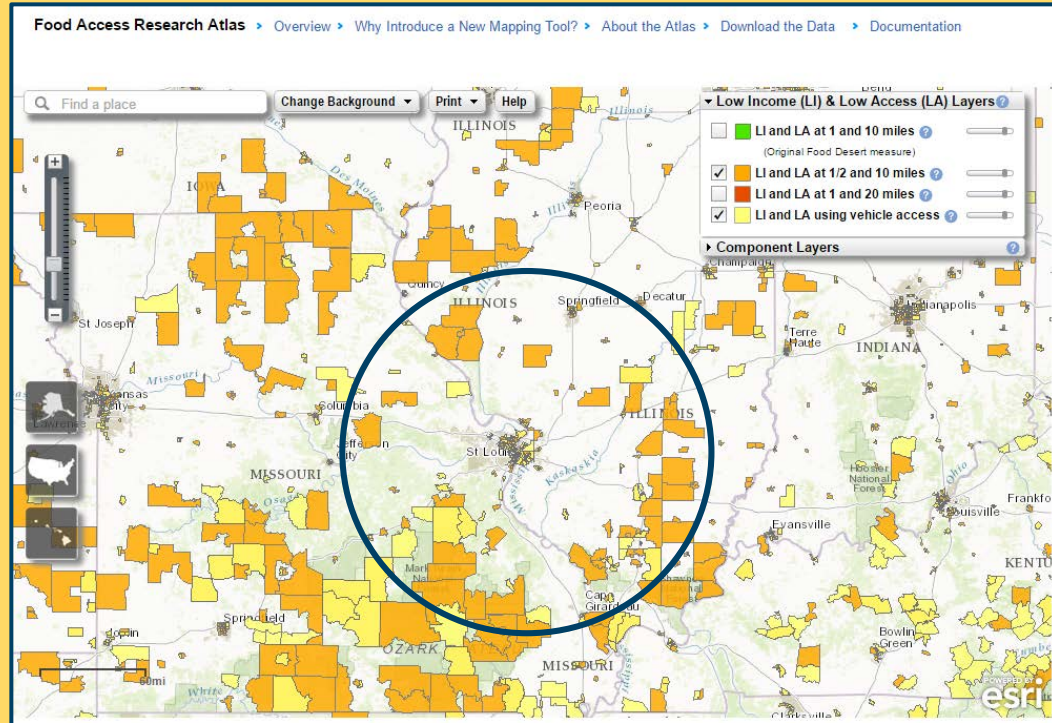
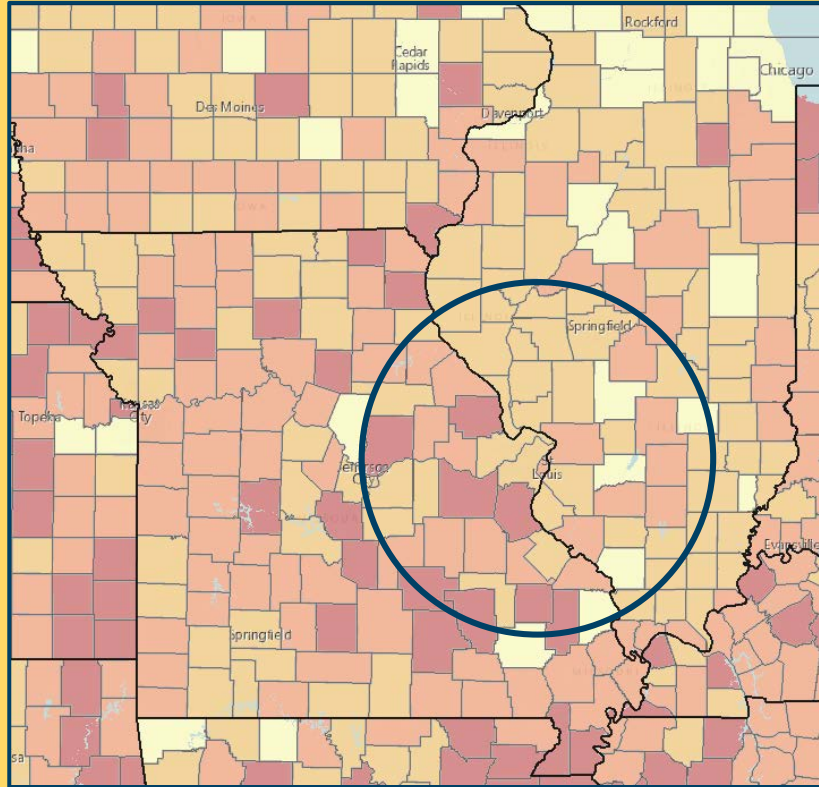
8% diabetes rate (2012)



0-6.5
6.6-8.0
8.1-9.4
9.5-11.1
11.2+
States
U.S. Background Map

Food Access

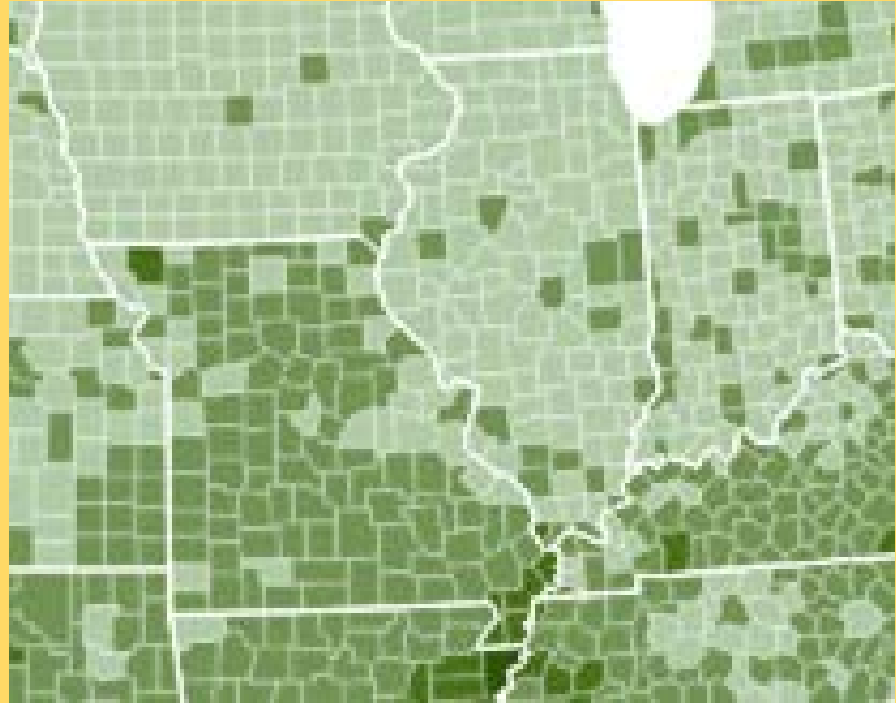
Food Deserts: Low-income areas where a significant number or share of residents is far from a supermarket, where "far" is more than 1 mile in urban areas and more than 10 miles in rural areas.



Food Insecurity

Food insecurity: “consistent access to adequate food is limited by a lack of money and other resources at times during the year.”

In 2013, **14.7%** of the Foodshed population were **food insecure**.



Food Insecurity Rates

4-14%

15-19%

20-24%

25-29%

30% +



Geographic Access

What can I afford and at the same time feed my family?

Affordability

What is this food item?

Food Literacy & Cultural Relevancy

Why should I eat this?

Nutrition Education

Healthy Food Consumption

Cooking Education & Resources

How do I eat this?

Do I have the tools at home to cook with this?

Gardening

How can I provide myself with healthy food?

Source: Asheville Department of Transportation Website



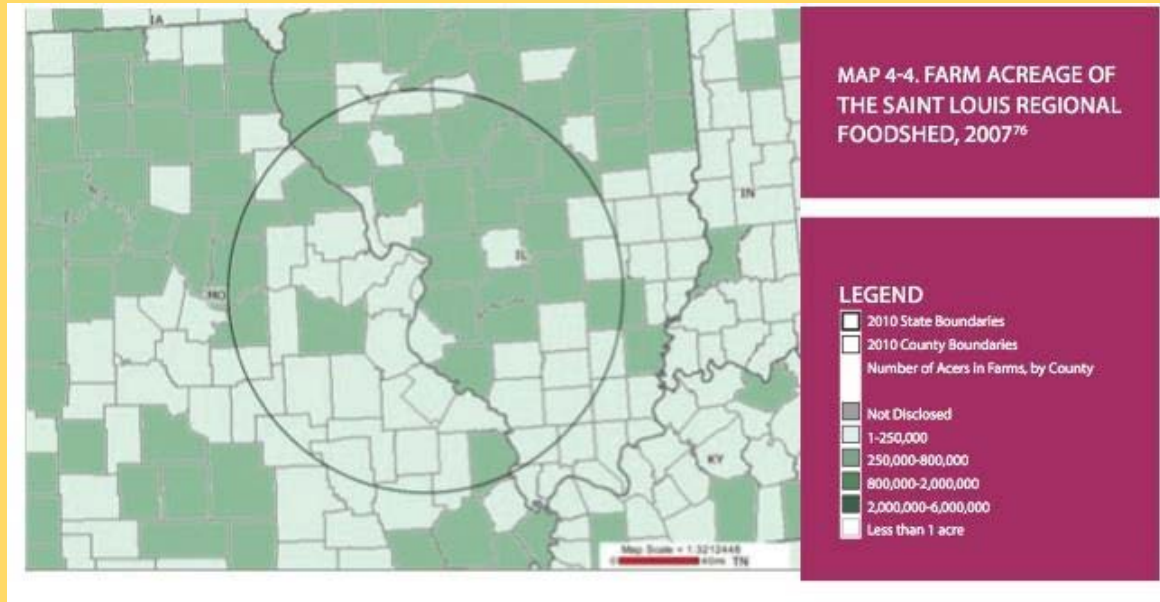
Source: Department of Agriculture, Centers for Disease Control



Land: 21.4 million acres

“Land in Farms” - land actually used for farming: 13.85 million acres

Cropland: 9.7 million acres



Number of Farms and Average Farm Size

Number of Farms Plummeted

1925: 137,770 farms

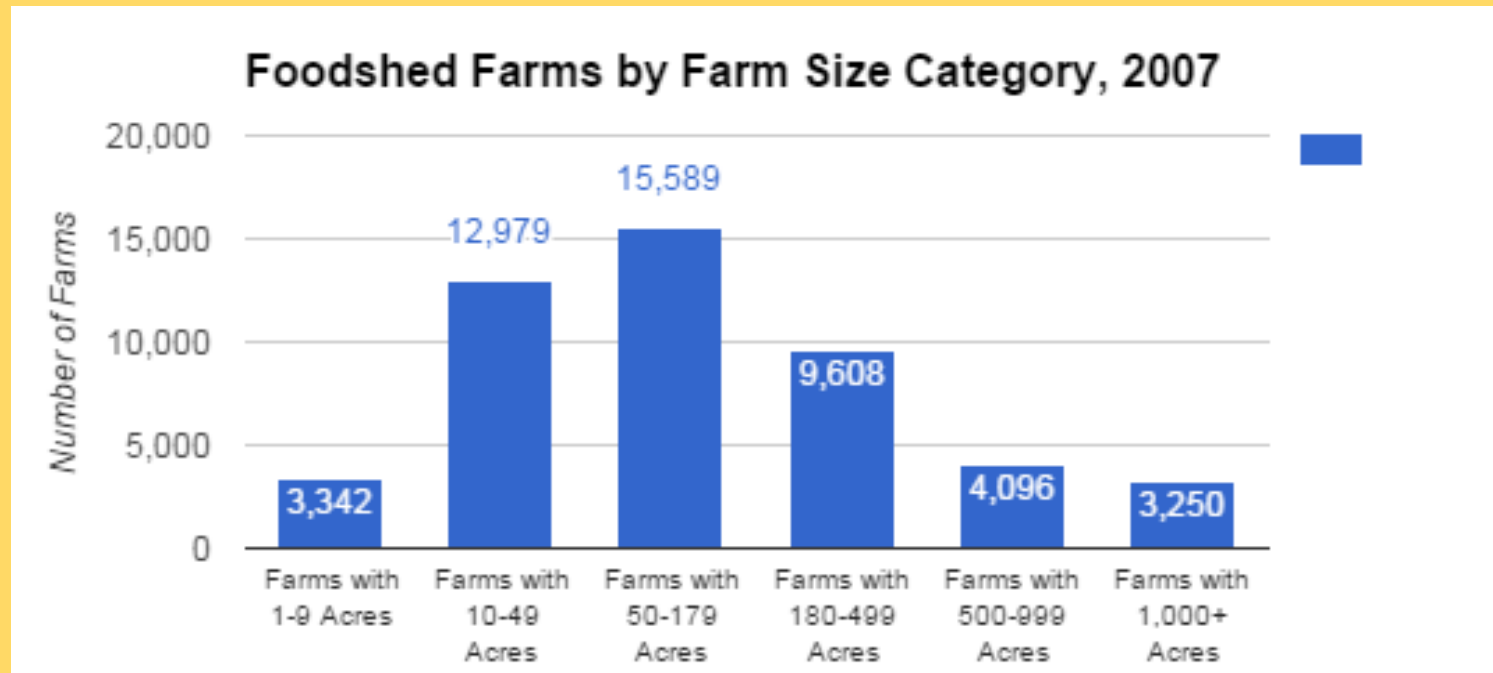
2007: 48,864 farms

Average Farm Size More Than Doubled

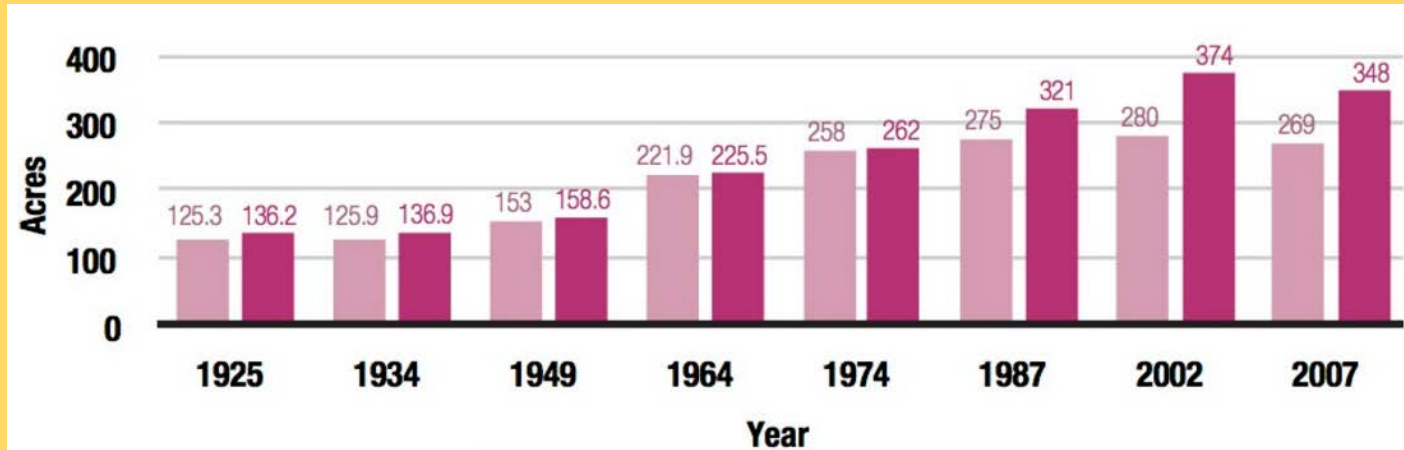
1925: 134 acres

2007: 284 acres

Number of Farms by Size Category



Bi-State Area - Average Size of Farms

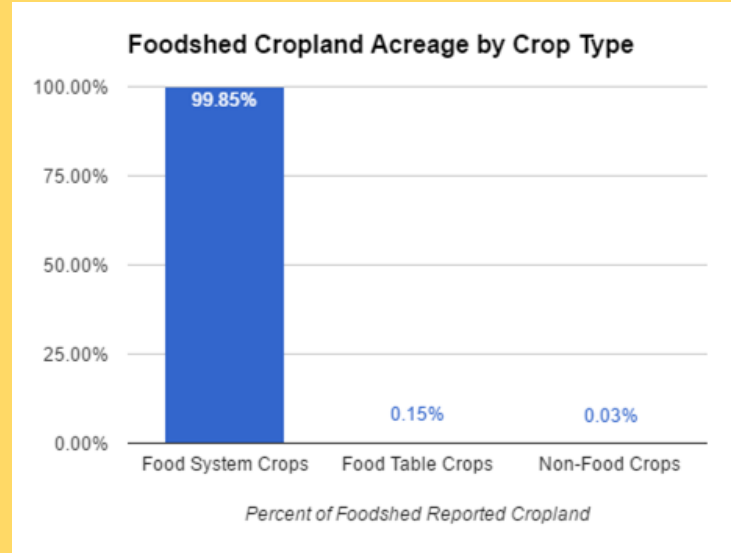


GRAPH 4-4. AVERAGE FARM SIZE IN MISSOURI & ILLINOIS, 1925-2007

MO NUMBER OF FARMS

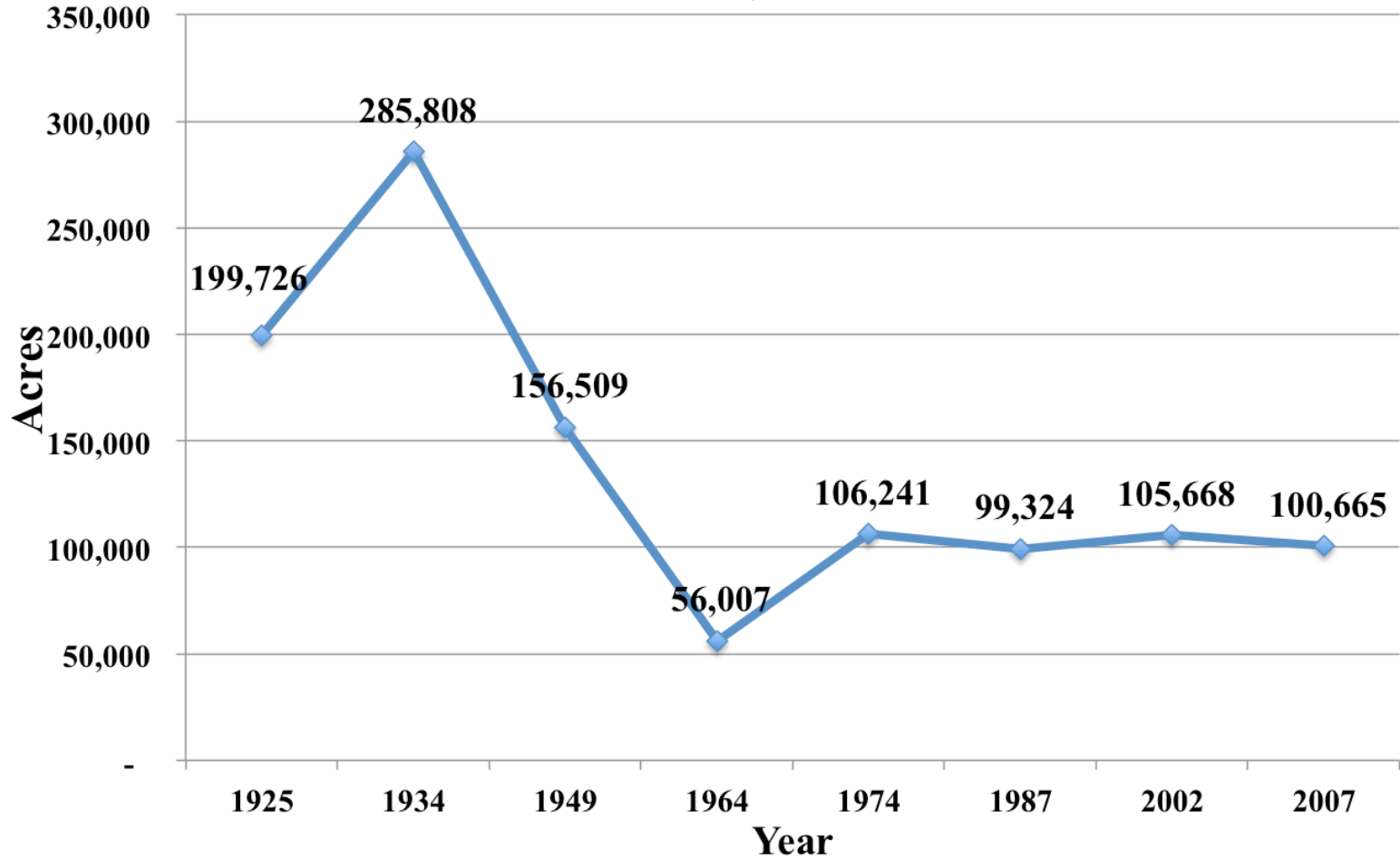
IL NUMBER OF FARMS

	Acreage by Crop Type	Total Foodshed Acreage	% of Total Reported for Individual Crops (9,131,054)
Food System Crops	Soybean	3,759,881	41.18%
	Corn for Grain	3,823,848	41.88%
	Corn for Silage	102,259	1.12%
	Other Processed Food Crops	567,415	6.21%
	Other Animal Feed Crops	863,996	9.46%
Food Table Crops	Orchards (includes non-citrus, citrus, and tree nuts)	4,899	0.05%
	Total Berries	447	0.00%
	Total Vegetables	5,354	0.06%
Non-Food Crops	Includes nursery plants, Christmas trees, and sod.	2,955	0.03%

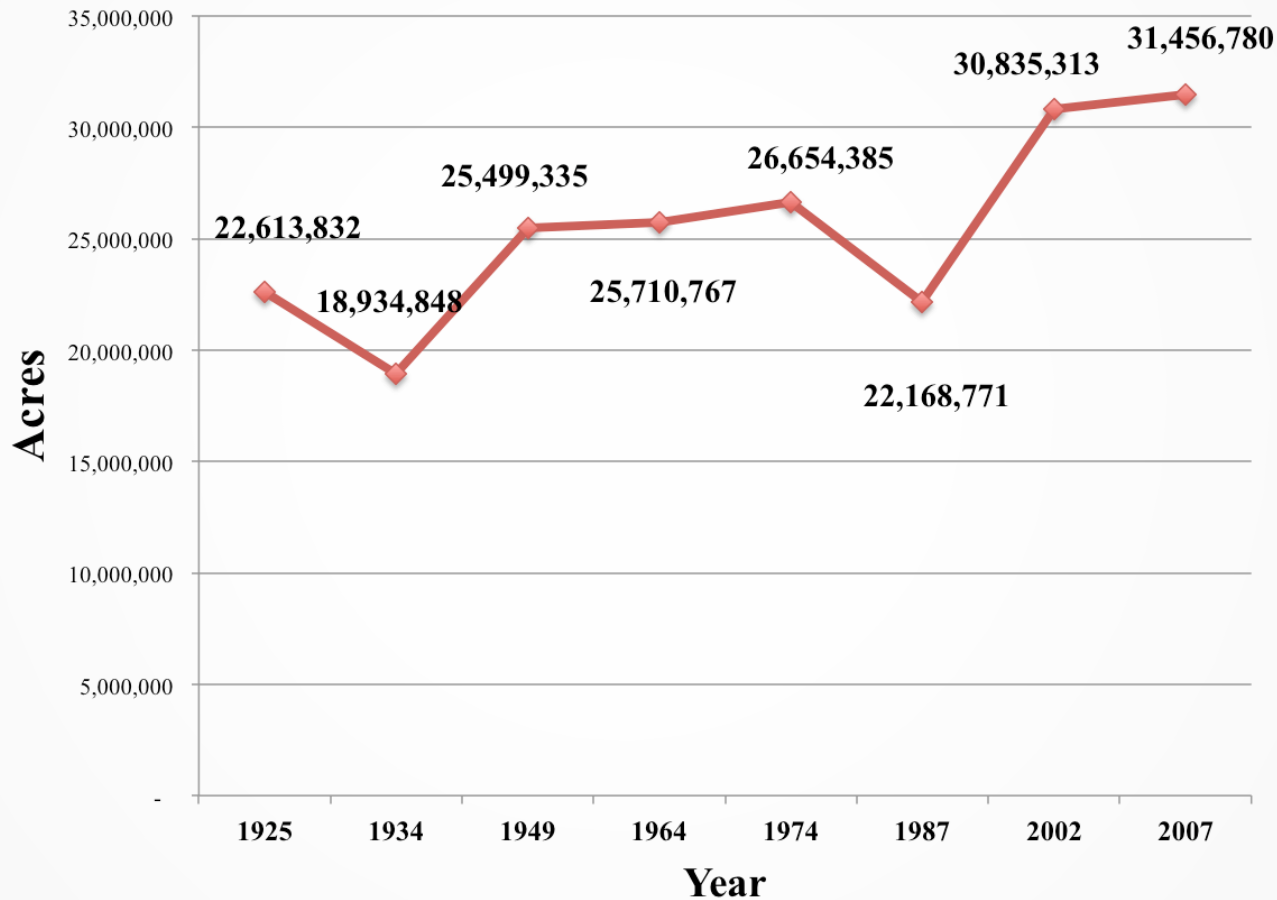


Food System Crop Acreage: 9.1 million
Food Table Crops: 13,655
Non-Food Crops: 2,955

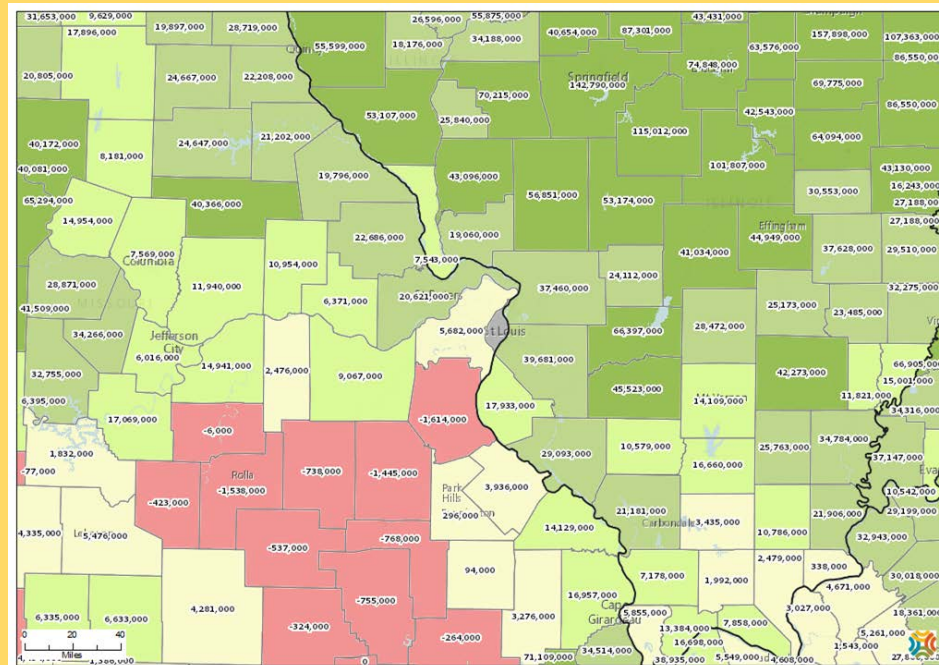
**5-2B. Total Cropland Designated to Fruit and Vegetable Acreage
in Missouri and Illinois, 1925-2007**



5-2A. Total Cropland Designated to Grain and Forage Crops in Missouri and Illinois, 1925-2007



Farm Operations, Net Income, Total by County, 2007



Map Legend

Farm Operations, Net Income, Total by County, Census of Agriculture 2007

- Over \$40,000,000
- \$18,000,001 - \$40,000,000
- \$6,000,001 - \$18,000,000
- Under \$6,000,001
- Zero or Negative Net Income
- No data or Data Suppressed

We Need to Fix Our Food System.

Fortunately, there are organizations across the region working toward this goal in various ways.

MCE's Role in STL's Local Food System

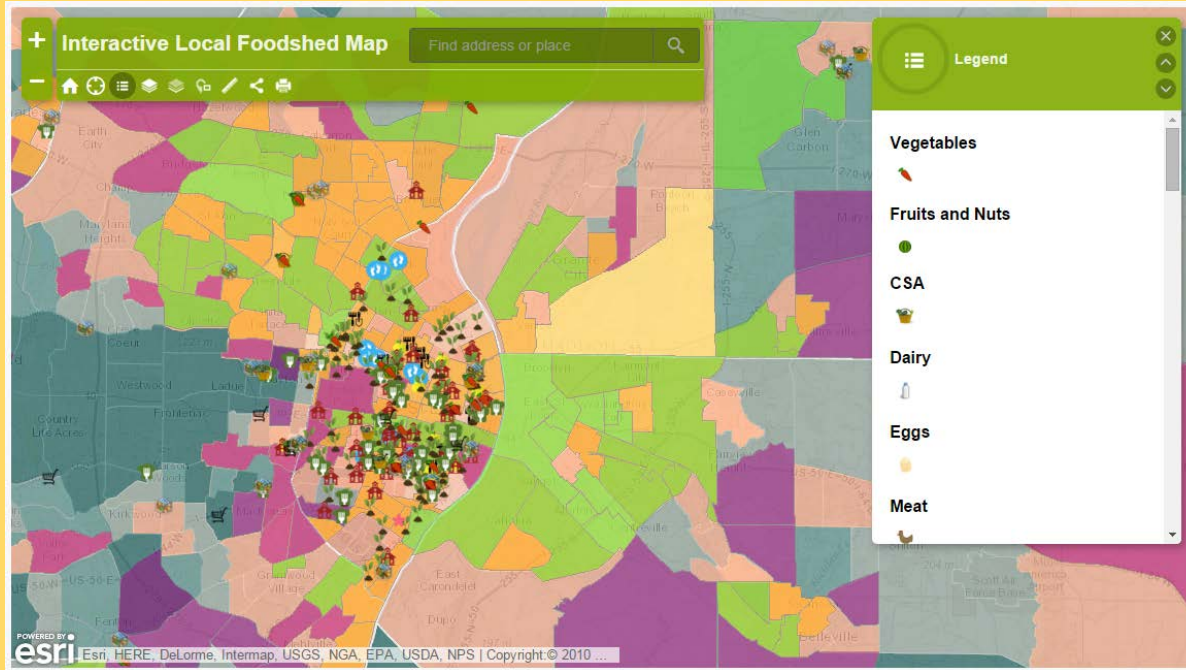
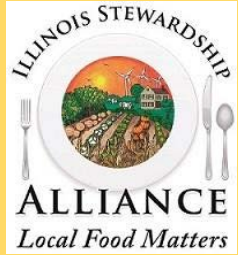
Coordinating Agency for the **St. Louis Food Policy Coalition**

VISION STATEMENT

A thriving local economy in the Greater St. Louis area where everyone has access to affordable, healthy food from local producers who are stewards of our soil, air, and water resources.



MCE's Role in STL's Local Food System



<http://moenvironment.org/17-food-and-farm/299-local-foodshed-interactive-map>

Thank you!

To view the abridged version of the St. Louis Regional Food Study, visit
www.moenvironment.org/stlfoodshed

Melissa Vatterott, mvatterott@moenviron.org